

## 5. Seat Heater System

### A: REMOVAL

#### 1. SEAT HEATER UNIT

- 1) Remove the front seats. <Ref. to SE-9, REMOVAL, Front Seat.>
- 2) Remove the backrest cover of front seat and seat cushion cover. <Ref. to SE-11, DISASSEMBLY, Front Seat.>
- 3) Remove the seat heater unit.

#### 2. SEAT HEATER SWITCH

- 1) Disconnect the ground cable from battery.

#### NOTE:

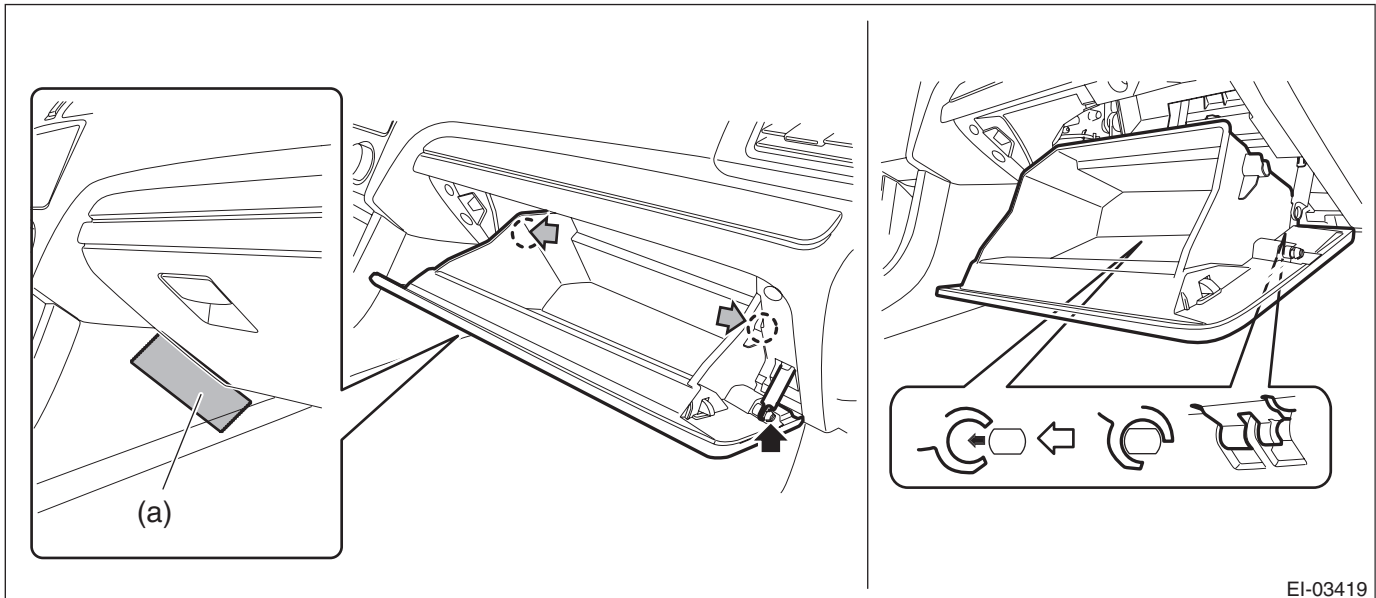
On CVT models, shift the select lever into D before disconnecting the battery ground cable.

Remove the console box assembly. <Ref. to EI-65, REMOVAL, Console Box.>

- 2) Remove the screws and remove the seat heater switch from the backside of the console box assembly.

#### 3. SEAT HEATER RELAY AND FUSE

- 1) Disconnect the ground cable from battery.
- 2) Remove the cover assembly - instrument panel LWR driver.<Ref. to EI-59, REMOVAL, Instrument Panel Lower Cover.>
- 3) Remove the pocket assembly.
  - (1) Attach the protective tape (a) to the panel center LWR.
  - (2) Remove the damper COMPL - pocket.
  - (3) Release the stoppers and remove the pocket assembly by pulling it toward you.



EI-03419

## Seat Heater System

### SEATS

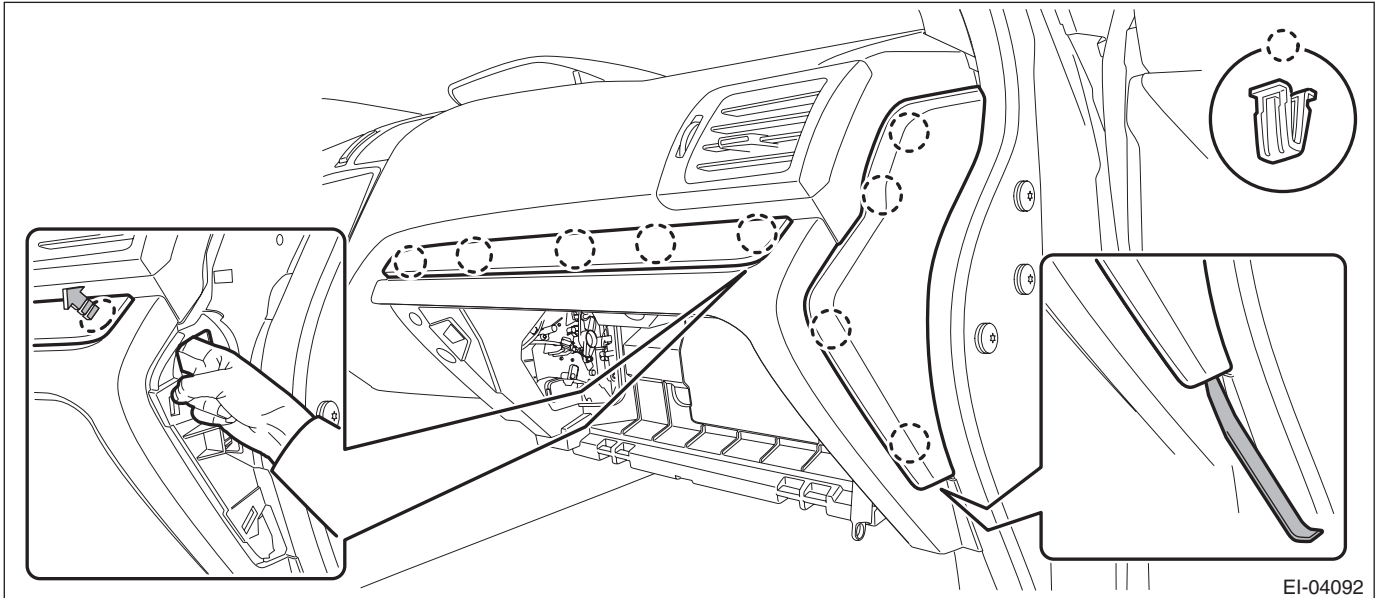
4) Remove the back panel - pocket.

(1) Remove the clips, and remove the cover - instrument panel side RH.

#### NOTE:

Remove the cover - instrument panel side RH by using a plastic remover.

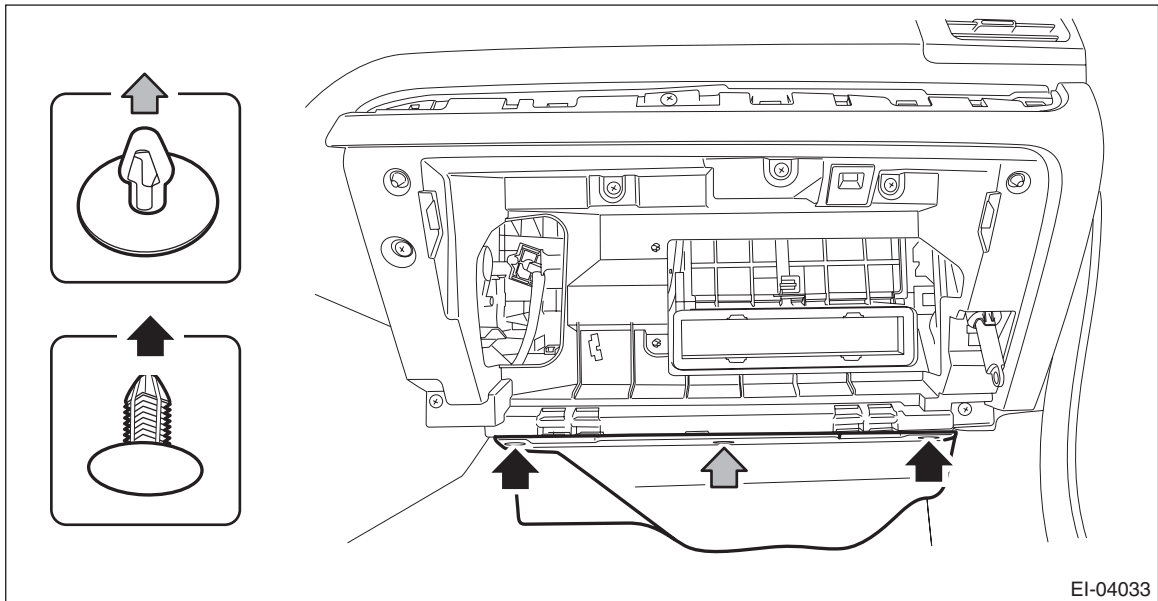
(2) Release the clips, and remove the ornament - panel assembly passenger.



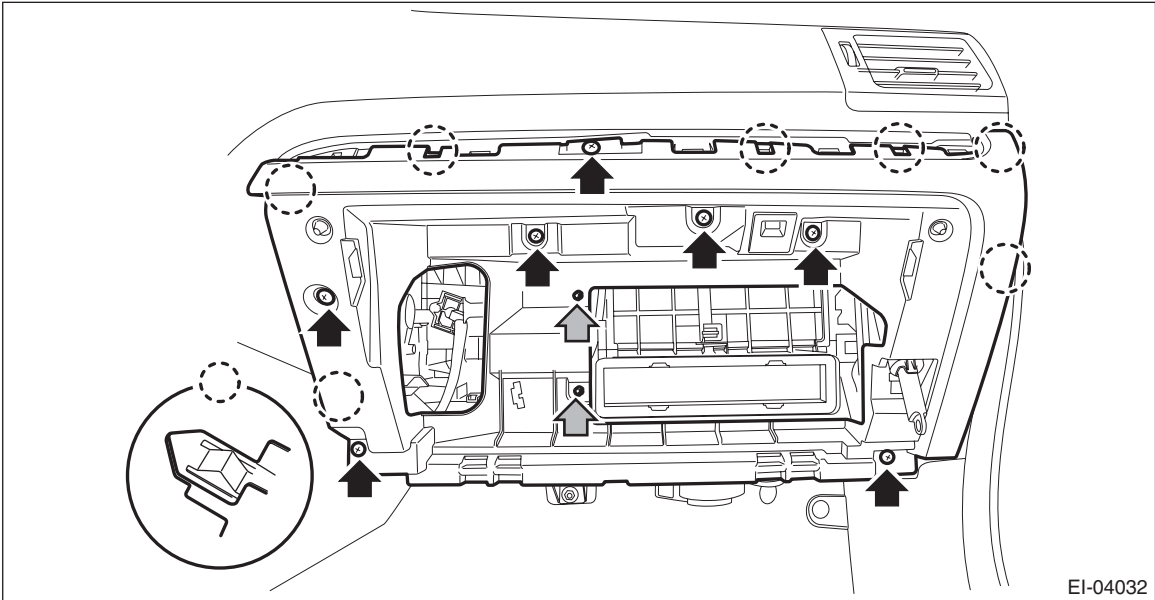
#### NOTE:

To facilitate the removal, push the clip of the ornament - panel assembly passenger from the backside.

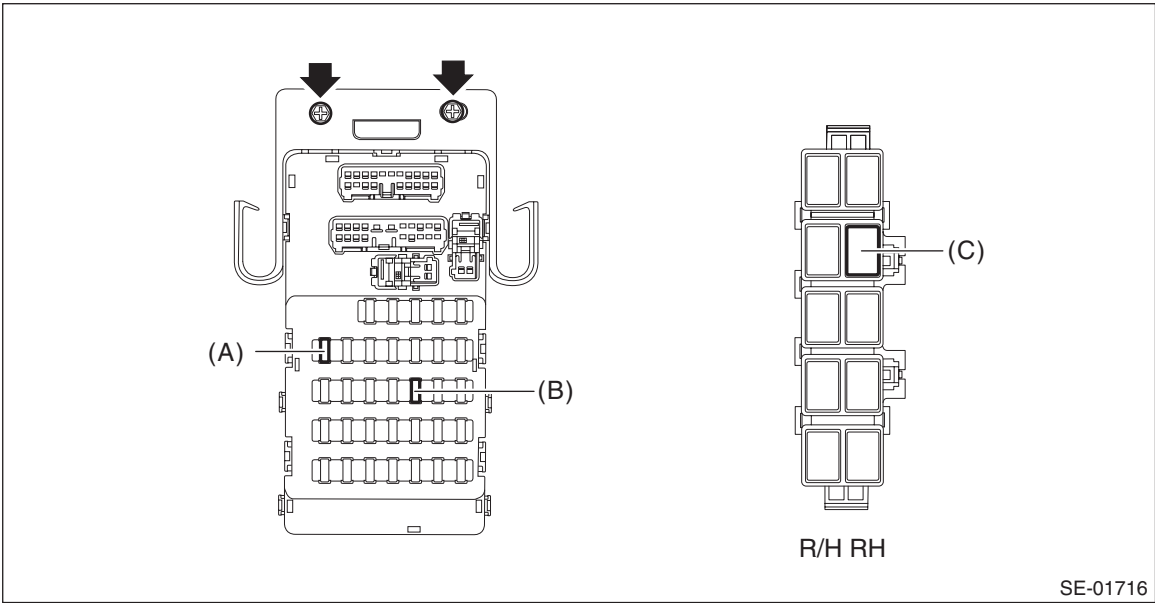
(3) Release the clips, and remove the glove box under cover.



(4) Remove the screws, claws and harness clamp, then remove the back panel - pocket.



- 5) Remove the seat heater relay and fuse.
- (1) Remove the relay & fuse box bolts.
  - (2) Remove the seat heater relay from the relay holder.



|                  |                                    |     |
|------------------|------------------------------------|-----|
| Relay & fuse box | Fuse 7.5 A (remote control mirror) | (A) |
|                  | Fuse 15 A (seat heater)            | (B) |
| Relay holder RH  | Seat heater relay                  | (C) |

**B: INSTALLATION**

Install each part in the reverse order of removal.

# Seat Heater System

SEATS

## C: INSPECTION

### 1. WIRING DIAGRAM

Refer to "Seat Heater System" in the wiring diagram. <Ref. to WI-370, WIRING DIAGRAM, Seat Heater System.>

### 2. DIAGNOSTIC CHART

| Symptoms                      | Repair order   |
|-------------------------------|--|
| Seat heater does not operate. | 1. Check the fuse. <Ref. to SE-56, CHECK SEAT HEATER FUSE, INSPECTION, Seat Heater System.>  |
|                               | 2. Check the seat heater relay. <Ref. to SE-56, CHECK SEAT HEATER RELAY, INSPECTION, Seat Heater System.>  |
|                               | 3. Check the seat heater system power supply and ground circuit. <Ref. to SE-57, CHECK POWER SUPPLY AND GROUND CIRCUIT, INSPECTION, Seat Heater System.> |
|                               | 4. Check the seat heater module. <Ref. to SE-57, SEAT HEATER UNIT, INSPECTION, Seat Heater System.>  |
|                               | 5. Check the seat heater switch circuit. <Ref. to SE-58, SEAT HEATER SWITCH, INSPECTION, Seat Heater System.>  |

### 3. CHECK SEAT HEATER FUSE

Remove the seat heater fuse and inspect visually.

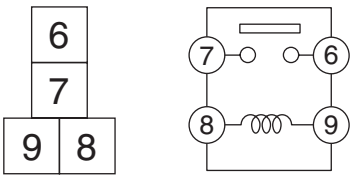
Is the fuse blown out?

- **Yes** → Replace the fuse.
- **No** → Check the power supply and ground circuits.

### 4. CHECK SEAT HEATER RELAY

- 1) Remove the seat heater relay from the relay holder.
- 2) Measure the resistance between seat heater relay terminals.

**Preparation tool: Circuit tester**

| Terminal No. | Inspection conditions                            | Standard             | Circuit   |
|--------------|--|----------------------|---|
| 6 — 7        | Always   | 1 M $\Omega$ or more |  |
| 6 — 7        | Apply battery voltage between terminals 8 and 9. | Less than 1 $\Omega$ |   |

SE-01387

- 3) Replace the seat heater relay if the inspection result is not within the standard value.

## 5. CHECK POWER SUPPLY AND GROUND CIRCUIT

### 1) Check power supply circuit

- (1) Disconnect the harness connector of seat heater switch.
- (2) Turn the ignition switch to ON.
- (3) Measure the voltage between harness connector terminal and chassis ground.

#### Connector & terminal

##### (R43) No. 7 (+) — Chassis ground (-):

Is the voltage 12 V or more?

- **Yes** → Go to step 2.
- **No** → Check the harness between the seat heater switch and fuse.

### 2) Check ground circuit

Measure the resistance between harness connector terminal and chassis ground.

#### Connector & terminal

##### (R43) No. 2 — Chassis ground:

Is the resistance less than 10  $\Omega$ ?

- **Yes** → Go to step 3.
- **No** → Repair the harness.

### 3) Check ground circuit

Measure the resistance between seat heater switch terminals.

#### Connector & terminal

##### (R43) No. 7 — (R43) No. 2:

Is the resistance less than 10  $\Omega$ ?

- **Yes** → The power supply and ground circuits are normal.
- **No** → Replace the seat heater switch.

## 6. SEAT HEATER UNIT

- 1) Disconnect the seat heater unit connector, and check the continuity between terminals of connector.

#### Connector & terminal

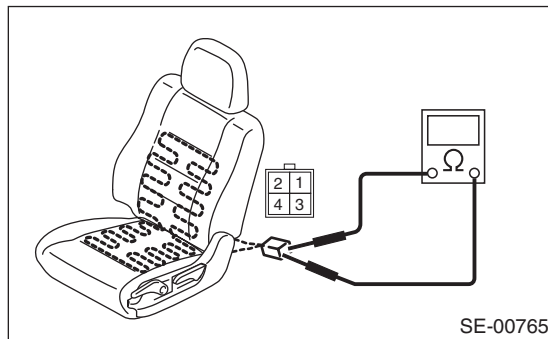
##### HI

No. 1 — No. 3:

No. 3 — No. 4:

##### LOW

No. 1 — No. 4:



- 2) If no continuity exists, replace the seat heater module with a new part.

### 7. SEAT HEATER SWITCH

1) Inspect the continuity between the seat heater switch terminals.

#### **Connector & terminal**

##### **HI**

**No. 4 — No. 5:**

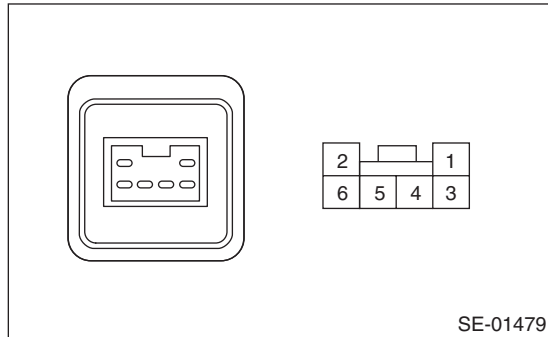
**No. 4 — No. 3:**

**No. 4 — No. 6:**

##### **LOW**

**No. 4 — No. 5:**

**No. 4 — No. 6:**



2) If no continuity exists, replace the seat heater switch with a new part.