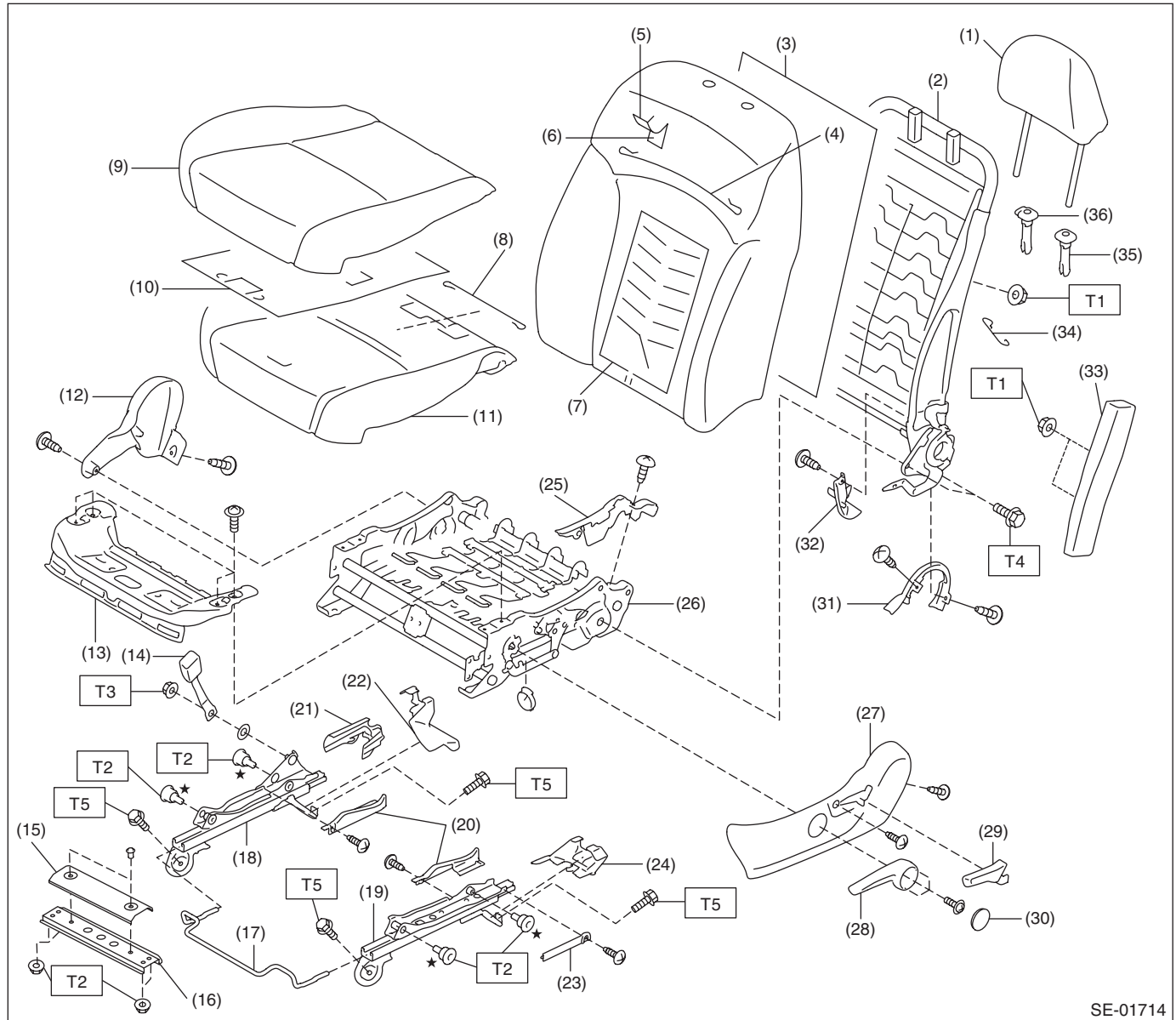


1. General Description

A: COMPONENT

1. FRONT SEAT

- Manual seat LH



SE-01714

General Description

SEATS

(1) Headrest ASSY - front	(16) Member - bracket	(31) Cover - hinge base front seat
(2) Frame ASSY - front backrest	(17) Lever - towel bar	(32) Cover - inner front
(3) Cover - silencer front seat backrest	(18) Slide rail ASSY - INN	(33) Side airbag module
(4) Wire set - front seat backrest	(19) Slide rail ASSY - OUT	(34) Hook - backrest front
(5) Cover COMPL - front backrest	(20) Cover - slide rail INN	(35) Bushing - free headrest
(6) Pad ASSY - front seat backrest	(21) Leg cover UPR	(36) Bushing - lock headrest
(7) Heater unit - front seat backrest	(22) Cover - bolt rear INN	
(8) Wire set - front seat cushion	(23) Cover - slide rail OUT	
(9) Cover - front cushion	(24) Cover - bolt rear OUT	
(10) Heater unit - front seat cushion	(25) Cover - frame front cushion	
(11) Pad ASSY - front seat cushion	(26) Frame ASSY - front cushion	
(12) Cover - hinge front seat INN	(27) Cover - hinge front seat OUT	
(13) Panel - front seat	(28) Knob - lifter	
(14) Seat belt inner - front	(29) Lever - reclining	
(15) Member - cover	(30) Cap - lifter lever	

Tightening torque:N·m (kgf-m, ft-lb)

T1: 6 (0.61, 4.4)

T2: 18 (1.84, 13.3)

T3: 38 (3.87, 28.0)

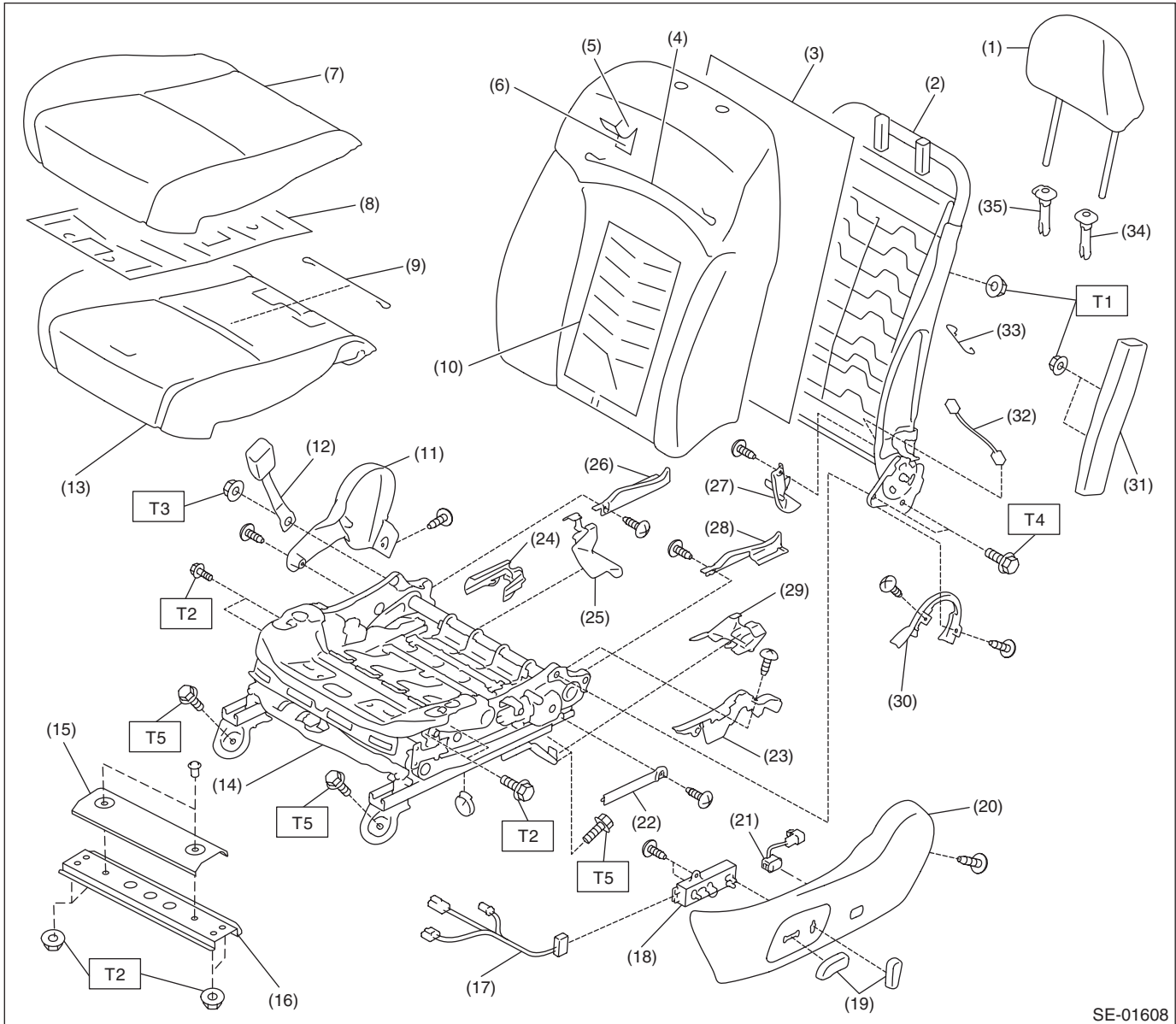
T4: 52 (5.30, 38.4)

T5: 53 (5.40, 39.1)

General Description

SEATS

• Power seat LH



SE-01608

- | | | |
|--|---------------------------------------|--------------------------------|
| (1) Headrest ASSY - front | (16) Member - bracket | (31) Side airbag module |
| (2) Frame ASSY - front backrest | (17) Harness ASSY - power seat | (32) Harness ASSY - power seat |
| (3) Cover - silencer front seat backrest | (18) Switch ASSY - power seat | (33) Hook - backrest front |
| (4) Wire set - front seat backrest | (19) Knob - power seat | (34) Bushing - free headrest |
| (5) Cover COMPL - front backrest | (20) Switch ASSY - lumbar | (35) Bushing - lock headrest |
| (6) Pad ASSY - front seat backrest | (21) Cover - hinge front seat OUT | |
| (7) Cover - front cushion | (22) Cover - slide rail OUT | |
| (8) Heater unit - front cushion | (23) Cover - frame front seat cushion | |
| (9) Wire set - front seat cushion | (24) Leg cover UPR | |
| (10) Heater unit - front seat backrest | (25) Cover - bolt rear INN | |
| (11) Cover - hinge front seat INN | (26) Cover - slide rail INN | |
| (12) Seat belt inner - front | (27) Cover - inner front | |
| (13) Pad ASSY - front seat cushion | (28) Cover - slide rail OUT | |
| (14) Frame ASSY - front cushion | (29) Cover - bolt rear OUT | |
| (15) Member - cover | (30) Cover - hinge base front seat | |

Tightening torque: N·m (kgf-m, ft-lb)

T1: 6 (0.61, 4.4)

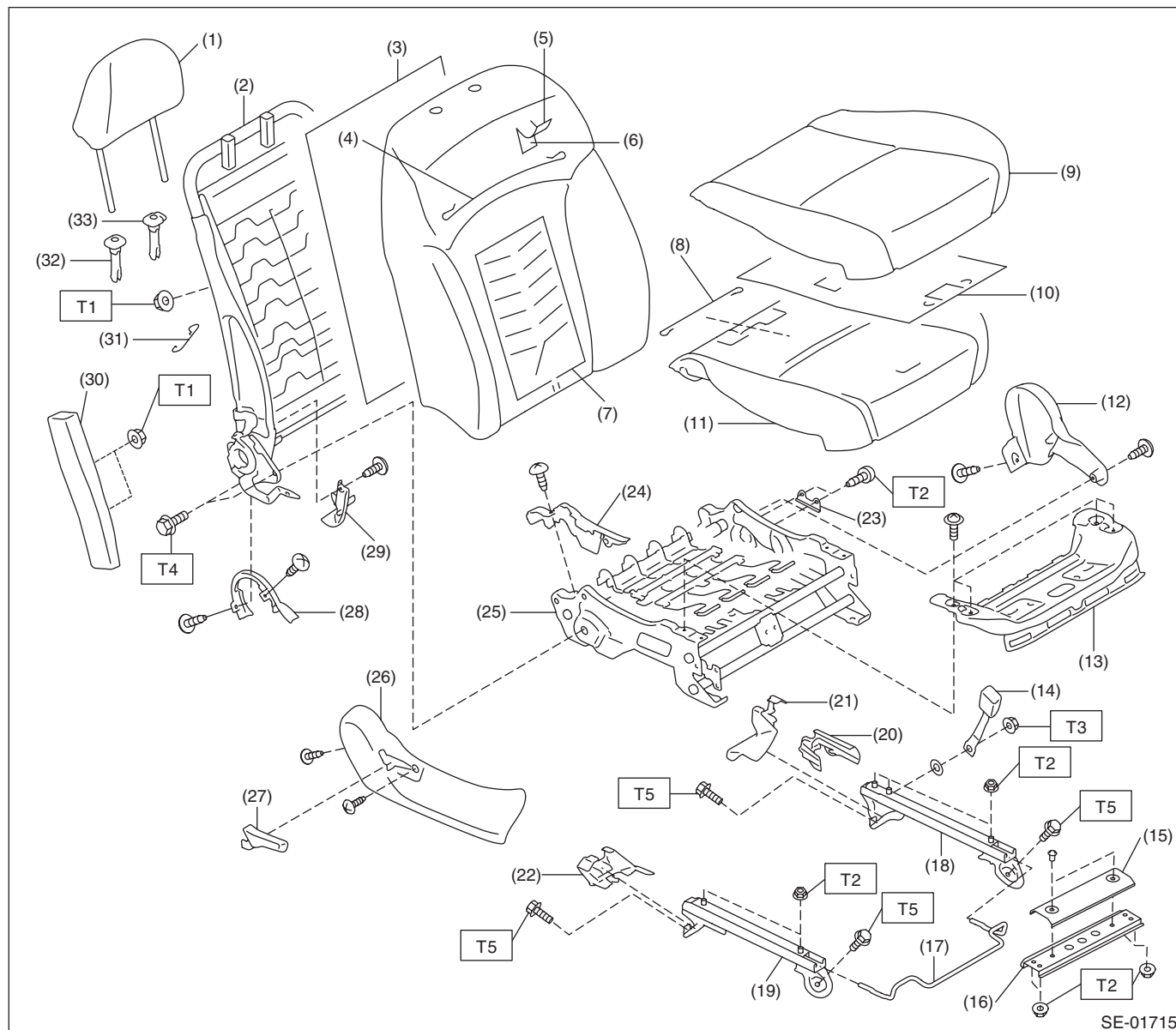
T2: 18 (1.84, 13.3)

T3: 38 (3.87, 28.0)

T4: 52 (5.30, 38.4)

T5: 53 (5.40, 39.1)

• Manual seat RH



- (1) Headrest ASSY - front
- (2) Frame ASSY - front backrest
- (3) Cover - silencer front seat backrest
- (4) Wire set - front seat backrest
- (5) Cover COMPL - front backrest
- (6) Pad ASSY - front seat backrest
- (7) Heater unit - front seat backrest
- (8) Wire set - front seat cushion
- (9) Cover - front cushion
- (10) Heater unit - front seat cushion
- (11) Pad ASSY - front seat cushion
- (12) Cover - hinge front seat INN
- (13) Panel - front seat
- (14) Seat belt inner - front

- (15) Member - cover
- (16) Member - bracket
- (17) Lever - towel bar
- (18) Slide rail ASSY - INN
- (19) Slide rail ASSY - OUT
- (20) Leg cover UPR
- (21) Cover - bolt rear INN
- (22) Cover - bolt rear OUT
- (23) J hook
- (24) Cover - frame front cushion
- (25) Frame ASSY - front cushion
- (26) Cover - hinge front seat OUT
- (27) Lever - reclining
- (28) Cover - hinge base front seat

- (29) Cover - inner front
- (30) Side airbag module
- (31) Hook - backrest front
- (32) Bushing - free headrest
- (33) Bushing - lock headrest

Tightening torque: N·m (kgf-m, ft-lb)

T1: 6 (0.61, 4.4)

T2: 18 (1.84, 13.3)

T3: 38 (3.87, 28.0)

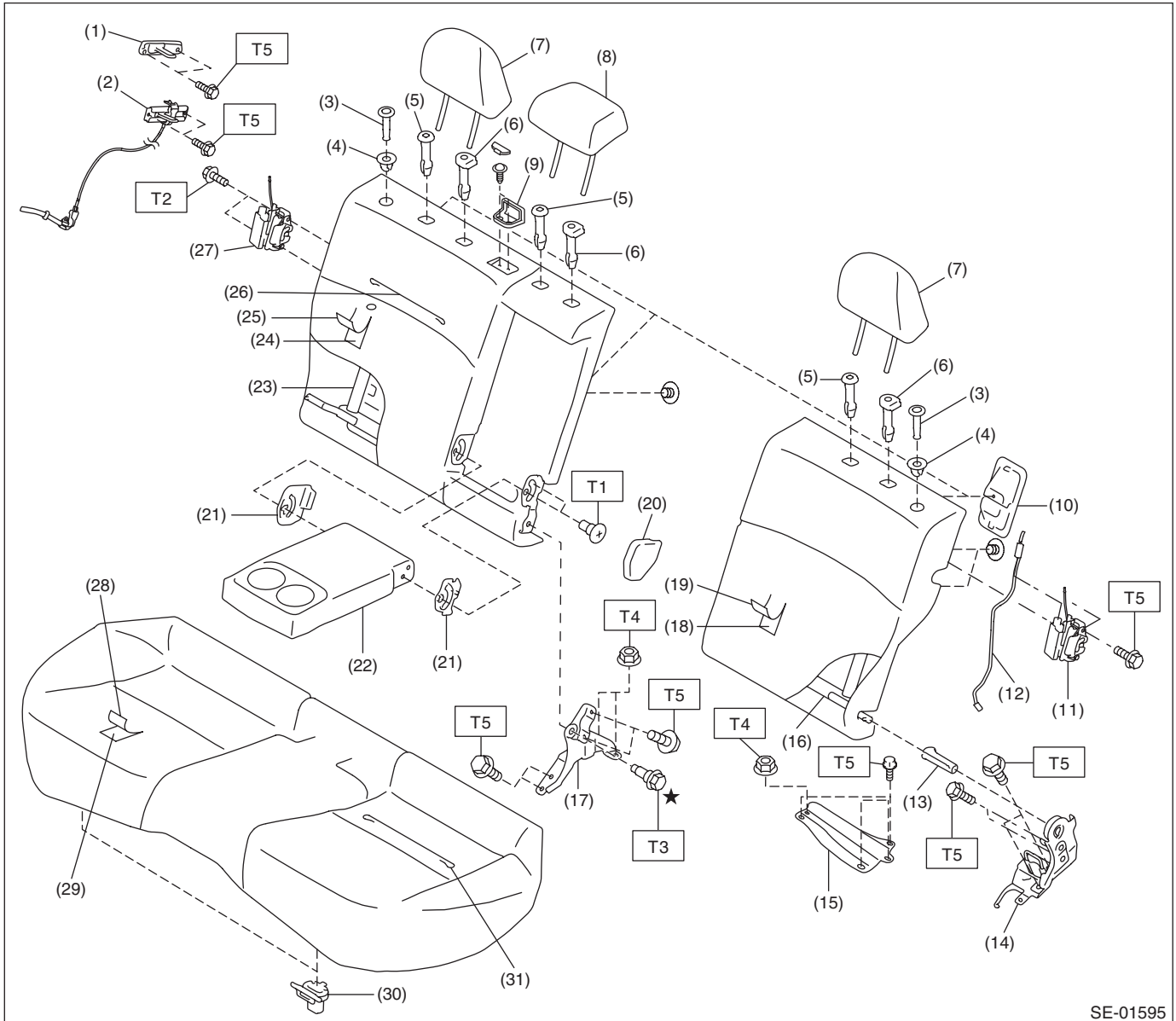
T4: 52 (5.30, 38.4)

T5: 53 (5.40, 39.1)

General Description

SEATS

2. REAR SEAT



SE-01595

General Description

SEATS

(1) Striker - backrest rear RH (except for reclining type)	(14) Hinge ASSY - rear backrest	(27) Lock ASSY - backrest rear RH
(2) Striker - backrest rear RH (reclining type)	(15) Hinge ASSY - rear backrest stay	(28) Cover - rear cushion
(3) Knob - backrest rear	(16) Frame ASSY - rear backrest LH	(29) Pad and frame ASSY - rear cushion
(4) Knob - guide	(17) Hinge ASSY - backrest center	(30) Hook - seat cushion rear
(5) Bushing - headrest	(18) Pad ASSY - rear seat backrest LH	(31) Wire set - rear cushion
(6) Bushing - lock ASSY	(19) Cover COMPL - rear backrest LH	
(7) Pillow ASSY - rear backrest	(20) Cover - armrest	<i>Tightening torque: N·m (kgf-m, ft-lb)</i>
(8) Pillow ASSY - rear center	(21) Bushing - rear armrest	<i>T1: 9.8 (1.0, 7.2)</i>
(9) Belt guide - rear seat	(22) Armrest ASSY - rear center	<i>T2: 17.6 (1.79, 13.0)</i>
(10) Tether anchor cover	(23) Frame ASSY - rear backrest RH	<i>T3: 22.5 (2.29, 16.6)</i>
(11) Lock ASSY - backrest rear LH	(24) Pad ASSY - rear seat backrest RH	<i>T4: 24.5 (2.50, 18.1)</i>
(12) Remote control back rest actuator ASSY	(25) Cover COMPL - rear backrest RH	<i>T5: 33 (3.36, 24.3)</i>
(13) Bushing - backrest hinge	(26) Wire set - rear backrest	

General Description

SEATS

B: CAUTION

When removing the front seat from the vehicle, refer to “CAUTION” of “General Description” in “AIRBAG SYSTEM” section. <Ref. to AB-9, CAUTION, General Description.>

C: PREPARATION TOOL

1. GENERAL TOOL

TOOL NAME	REMARKS
Long nose plier	Used for removing the hog ring.
Hog ring pliers	Used for installing the hog ring.
Circuit tester	Used for measuring resistance and voltage.