

### 31. Spot Map Light

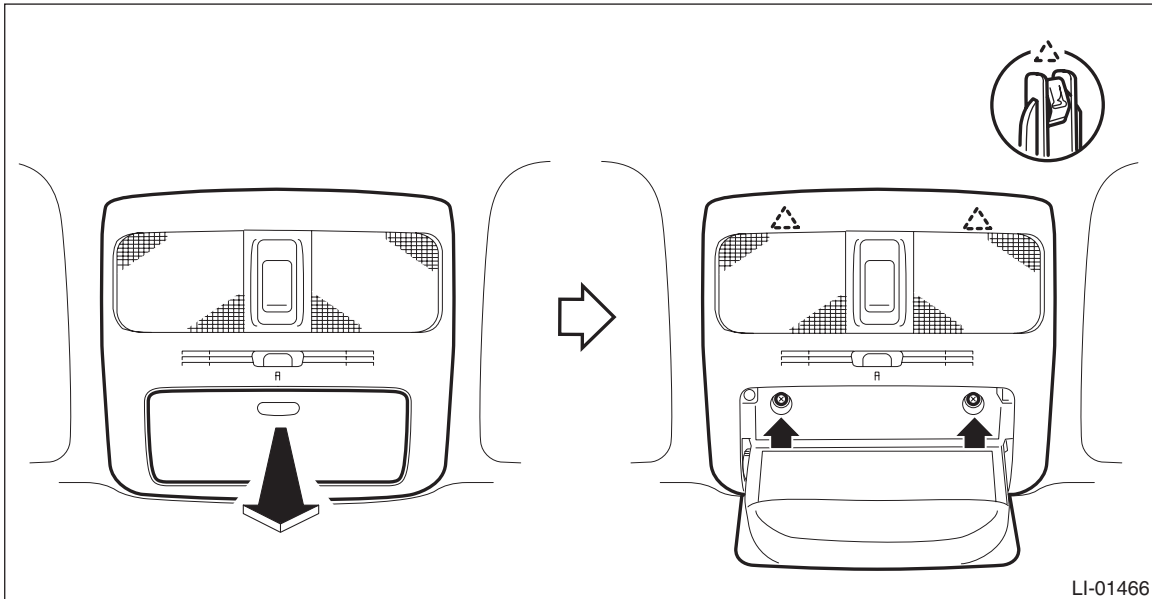
#### A: REMOVAL

##### 1. MODELS WITHOUT EyeSight

###### NOTE:

The spot map light is a single unit with the overhead console.

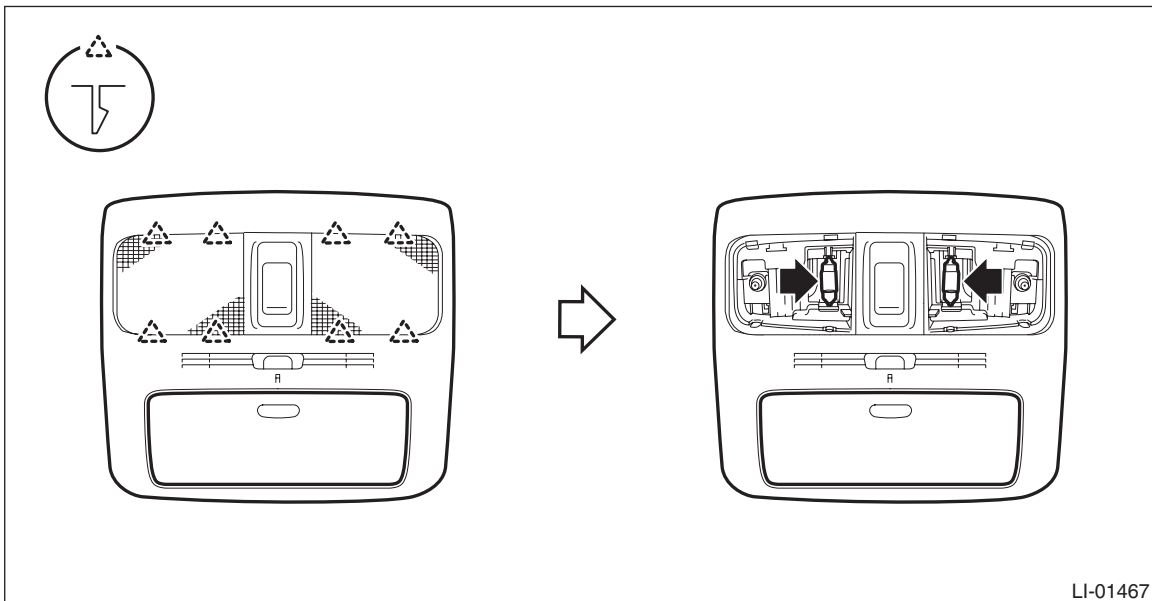
- 1) Disconnect the ground cable from battery.
- 2) Remove the overhead console assembly.
  - (1) Push and open the rear end of the overhead console lid, and remove the screws.
  - (2) Remove the clips and pull out the overhead console to disconnect the connectors.



- 3) Release the claws, then detach the spot map light cover and bulb.

###### CAUTION:

When using a flat tip screwdriver, apply protective tape or cloth and be careful not to cause damage.



## 2. MODELS WITH EyeSight

### NOTE:

The spot map light is a single unit with the stereo camera cover.

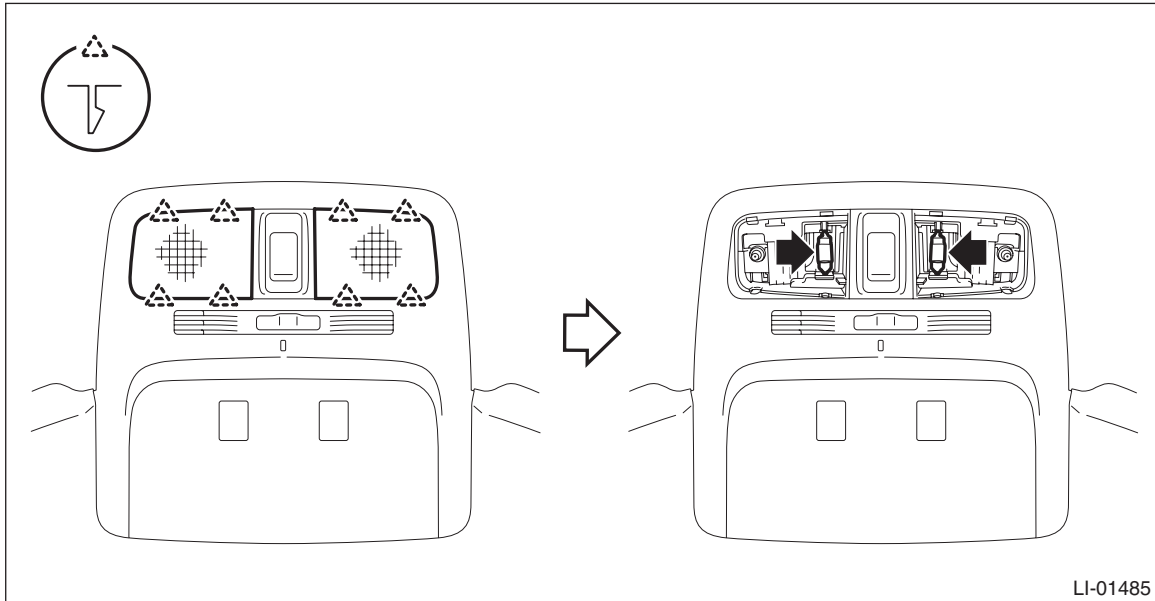
1) Remove the stereo camera cover. <Ref. to ES-11, REMOVAL, Stereo Camera.>

### CAUTION:

**When using a flat tip screwdriver, apply protective tape or cloth and be careful not to cause damage.**

2) Release the claws and remove the lens.

3) Remove the bulb.



# Spot Map Light

## LIGHTING SYSTEM

### B: INSTALLATION

Install each part in the reverse order of removal.

### C: INSPECTION

#### 1. SPOT MAP LIGHT BULB

- 1) Visually check the bulb for blow out.
- 2) Check the bulb specification. <Ref. to LI-2, SPECIFICATION, General Description.>
- 3) Replace the bulb if it is found defective.

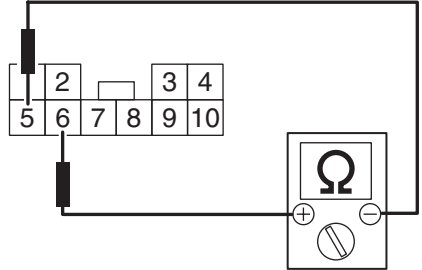
#### 2. SPOT MAP LIGHT SWITCH

##### UNIT INSPECTION

**Preparation tool:**

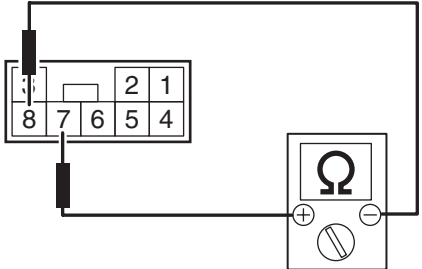
**Circuit tester**

- 1) Check the resistance between switch terminals.
- Models without EyeSight

Terminal No.	Inspection conditions	Standard	Connection diagram
6 — 5	Switch OFF	1 MΩ or more	
	Switch ON	Approx. 18 Ω	

LI-01643

- Models with EyeSight

Terminal No.	Inspection conditions	Standard	Connection diagram
7 — 8	Switch OFF	1 MΩ or more	
	Switch ON	Approx. 18 Ω	

LI-01644

- 2) Replace the light assembly - map if the inspection result is not within the standard value.