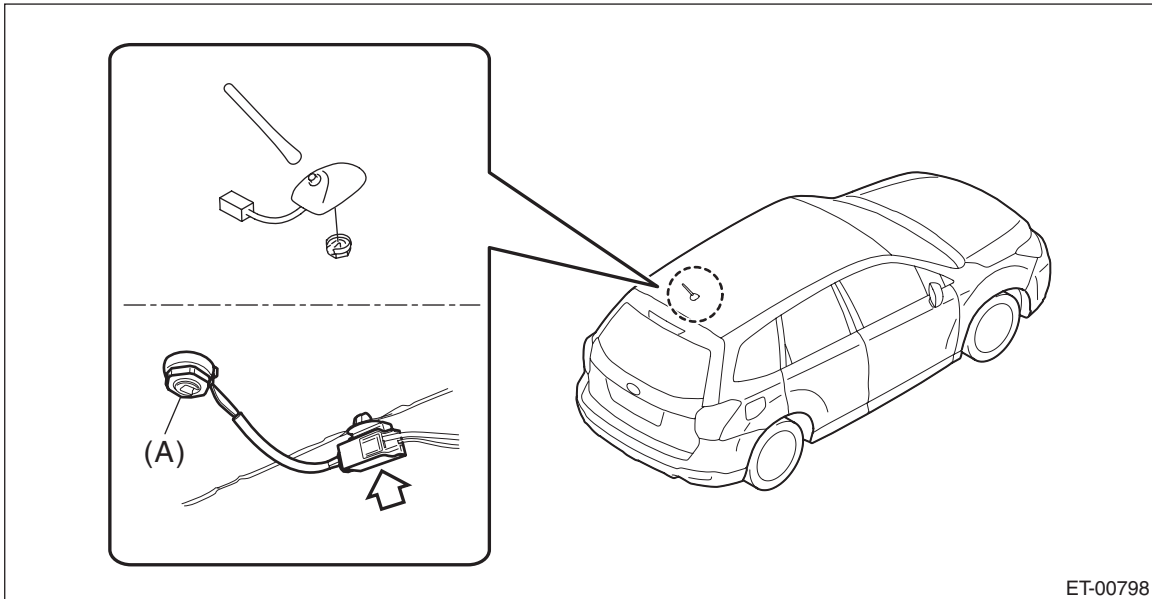


9. Antenna

A: REMOVAL

1. ANTENNA

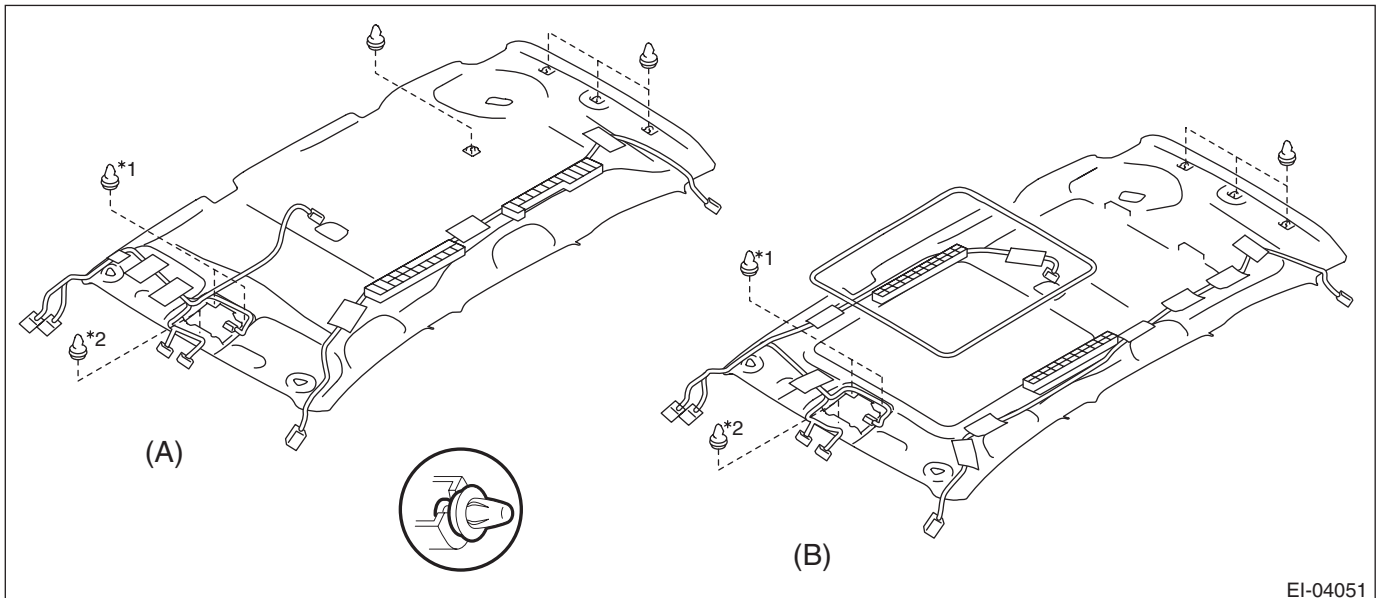
- 1) Remove the trim panel - roof assembly. <Ref. to EI-109, REMOVAL, Roof Trim.>
- 2) Remove the antenna assembly - radio.
 - (1) Disconnect the connector and remove the mounting nut (A).
 - (2) Pull out the antenna assembly - radio from the roof panel top.



ET-00798

2. ANTENNA FEEDER CORD

- 1) Remove the trim panel - roof assembly. <Ref. to EI-109, REMOVAL, Roof Trim.>
- 2) Remove the cord assembly - antenna feeder from the trim panel - roof assembly.



EI-04051

(A) Normal roof type

(B) Sunroof type

*1 Models with EyeSight

*2 Models without EyeSight

B: INSTALLATION

Install each part in the reverse order of removal.

Tightening torque:

Antenna assembly - radio: 4.5 N·m (0.46 kgf-m, 3.3 ft-lb)