

## 14.Rearview Camera System

### A: WIRING DIAGRAM

Refer to "Rearview Camera System" in the wiring diagram. <Ref. to WI-347, WIRING DIAGRAM, Rearview Camera System.>

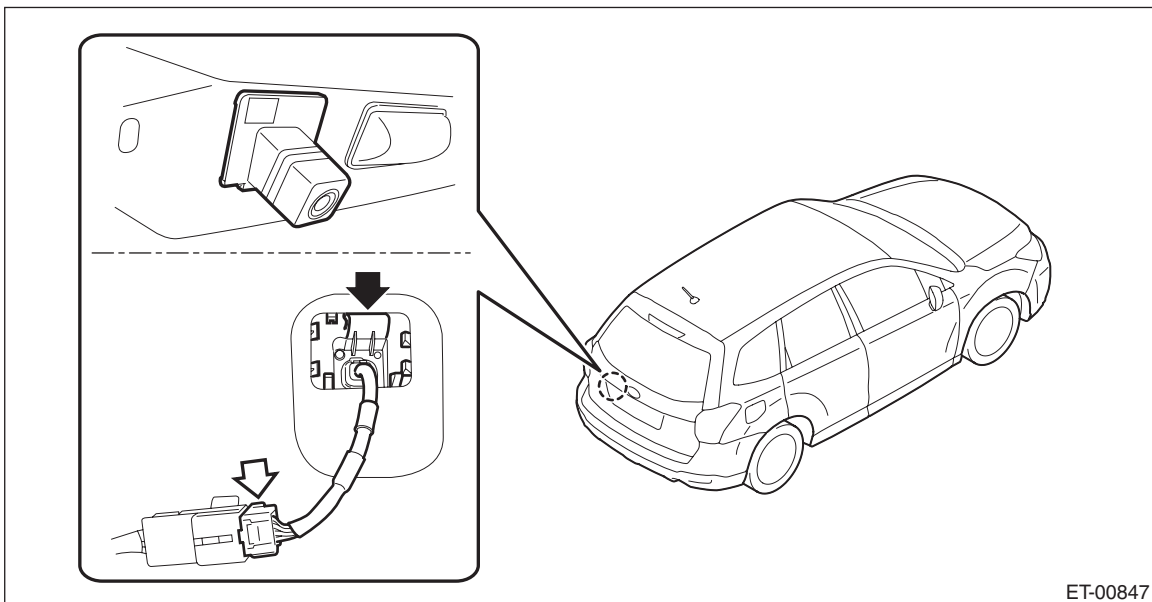
### B: REMOVAL

- 1) Disconnect the ground cable from battery.
- 2) Remove the trim panel - rear gate and the garnish assembly - rear gate. <Ref. to EI-126, REMOVAL, Rear Gate Garnish.>
- 3) Remove the rearview camera assembly.

#### CAUTION:

**Do not drop or apply any impact to the rearview camera because it is a precision equipment.**

- (1) Disconnect the rearview camera connector.
- (2) Disconnect the claws and then remove the rearview camera assembly.



### C: INSTALLATION

#### CAUTION:

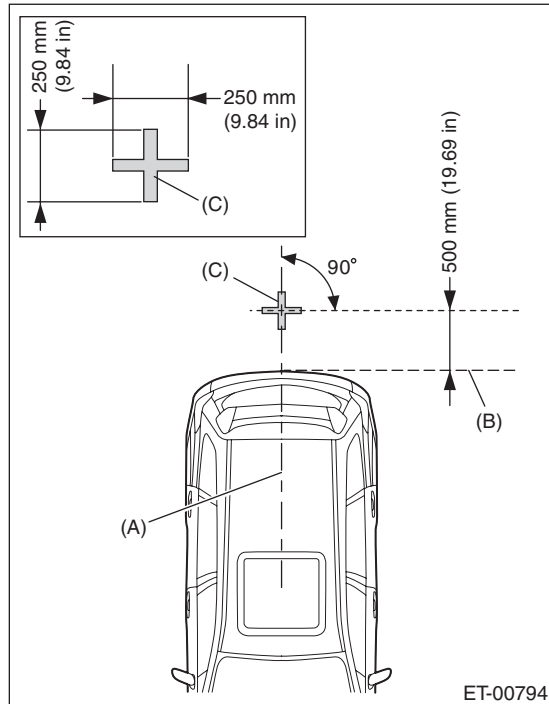
**Be sure to confirm the marker position, whenever the rearview camera is removed/installed/replaced.**  
Install each part in the reverse order of removal.

## D: INSPECTION

- 1) Park the vehicle at the level place where there are enough area at the rear of the vehicle.
- 2) Attach the tape as the target point for standard at the floor rearward of the vehicle as shown in the figure below.

### NOTE:

Standard tape width is about 30 — 50 mm (1.18 — 1.97 in) and brilliant color shall be used.



- (A) Vehicle body center line
- (B) Rear edge of bumper
- (C) Target point

- 3) Confirm the following before checking the corresponding items.

- When the display is blank:

Rearview camera image is not displayed. (Navigation or multi-function display screen is displayed normally.)

1. Check the condition of back sensor connection.

- Navigation system:<Ref. to ET-6, CHECK EACH VEHICLE SIGNAL, INSPECTION, Navigation System.>
- Multi-function display (MFD) system:<Ref. to IDI-14, DIAGNOSTIC MODE (HIGH GRADE TYPE ONLY), OPERATION, Multi-function Display (MFD) System.>

2. Check the condition of rearview camera connection.

- Navigation system:<Ref. to ET-5, CHECK EACH CONNECTION, INSPECTION, Navigation System.>
- Multi-function display (MFD) system:<Ref. to IDI-14, DIAGNOSTIC MODE (HIGH GRADE TYPE ONLY), OPERATION, Multi-function Display (MFD) System.>

- When the marker position is not aligned:

1. Adjust the marker position according to the MARKER ADJUSTMENT MODE.<Ref. to ET-30, MARKER ADJUSTMENT MODE, ADJUSTMENT, Rearview Camera System.>

## E: ADJUSTMENT

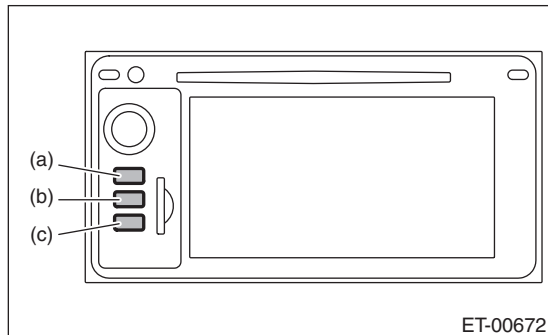
### 1. MARKER ADJUSTMENT MODE

- Navigation system

**CAUTION:**

When replacing the navigation unit, be sure to replace with specified navigation unit. The marker adjustment can not be performed correctly if replacing with unspecified navigation unit.

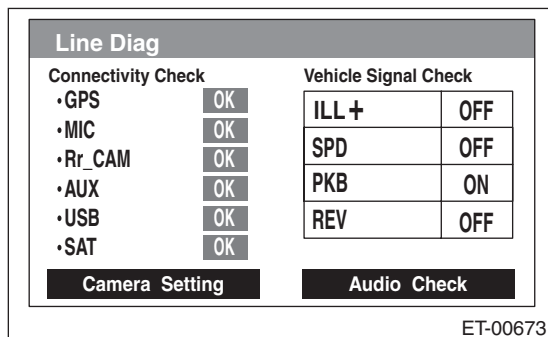
- 1) Prepare the target point.<Ref. to ET-29, INSPECTION, Rearview Camera System.>
- 2) With the main power OFF, press and hold the button (c) for 3 seconds or more while pressing the buttons (a) and (b) simultaneously.



**NOTE:**

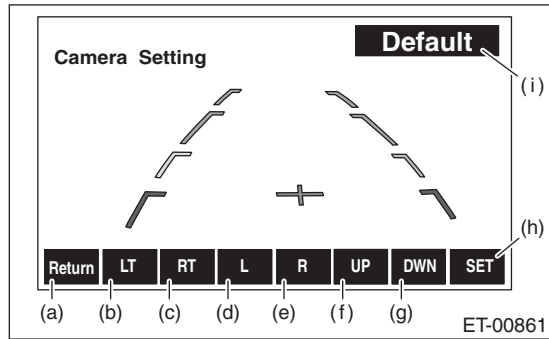
Pressing the button (a) for 3 seconds or more, or turning the ignition switch from ACC OFF to ON position can exit the diagnostic mode.

- 3) Line Diag screen is displayed.



- 4) Touch {Camera Setting} key to display «Camera Setting» screen.
- 5) Shift the shift lever or the select lever to the following position to display the image of the rearview camera:
  - MT model: Shift lever shifted to “Reverse” position.
  - CVT model: Select lever shifted to “R” position.

6) Touch the adjustment keys (d), (e), (f) and (g) on the display screen to adjust the marker line.



- (a) Returns to vehicle selection screen.
- (b) Rotates the cross line on the center of the screen counterclockwise by 0.25°.
- (c) Rotates the cross line on the center of the screen clockwise by 0.25°.
- (d) Moves the guide line and cross line to the left.
- (e) Moves the guide line and cross line to the right.
- (f) Moves the guide line and cross line upward.
- (g) Moves the guide line and cross line downward.
- (h) Saves settings for vehicle selection and guide line.
- (i) Resets the adjustment value to the default condition.

(1) Confirm that the target point position in the display screen is identified.

(2) Adjust by touching the adjustment keys so that the cross line and target point join together.

7) Turn the ignition switch to OFF and wait for 60 seconds or more before turning the ignition switch to ON again.

## CAUTION:

**If the ignition switch is turned to OFF, be sure to wait for 60 seconds or more before turning the ignition switch to ON again.**

**If turning the ignition switch to ON again or disconnecting the ground cable from battery within 60 seconds after turning the ignition switch to OFF, the navigation unit data updating can not be performed correctly.**

8) Shift the shift lever or the select lever to the following position to display the image of the rearview camera:

- MT model: Shift lever shifted to "Reverse" position.
- CVT model: Select lever shifted to "R" position.

9) Confirm that the marker line position is correctly adjusted before turning the ignition switch to OFF, then finish the procedures.

## • Multi-function display (MFD) system

For marker adjustment of the multi-function display (MFD) system, refer to "INSTRUMENTATION/DRIVER INFO".<Ref. to IDI-14, DIAGNOSTIC MODE (HIGH GRADE TYPE ONLY), OPERATION, Multi-function Display (MFD) System.>