

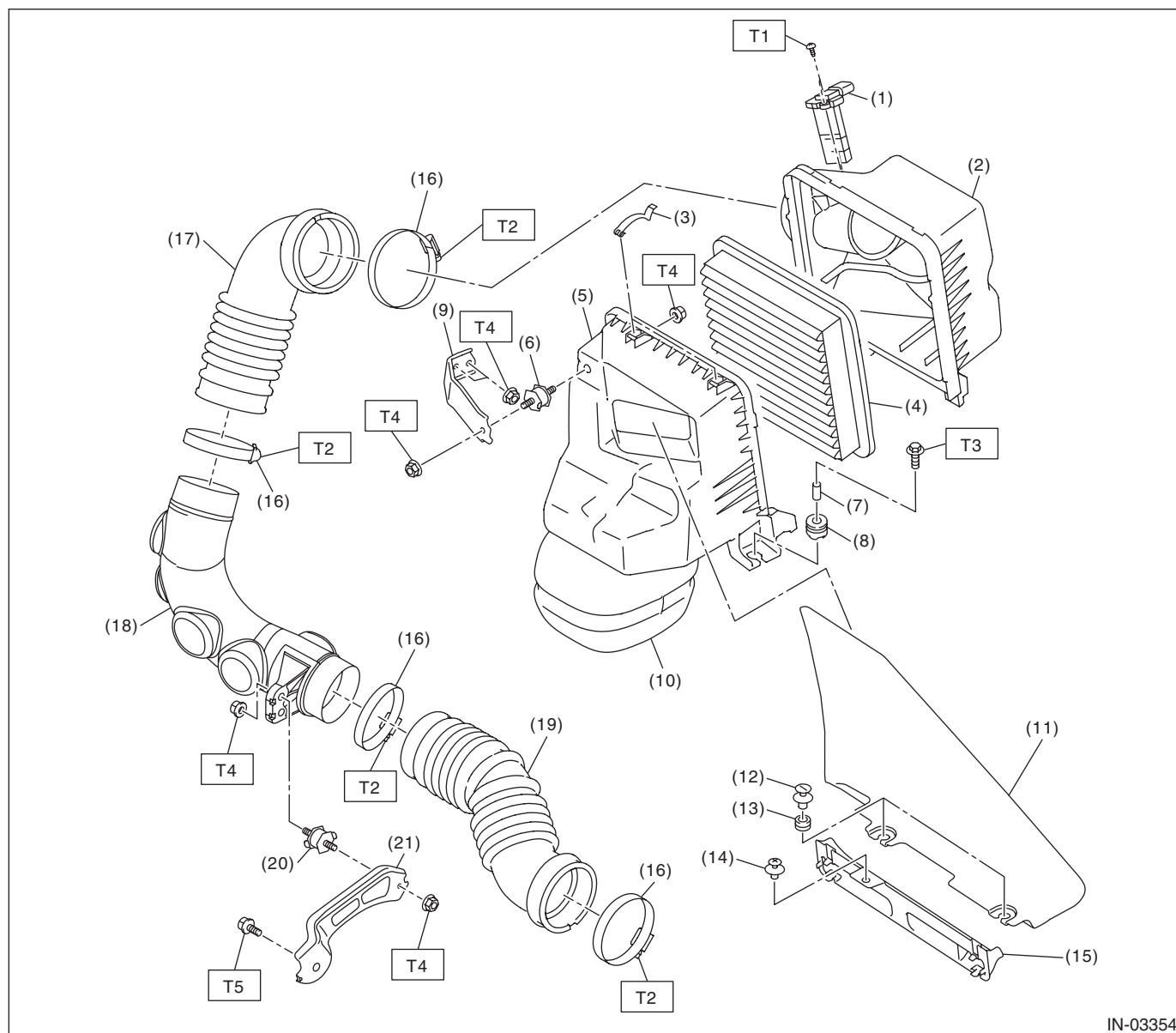
# General Description

## INTAKE (INDUCTION)

### 1. General Description

#### A: COMPONENT

#### 1. AIR CLEANER



IN-03354

- |   |                              |
|---|------------------------------|
| (1) Mass air flow and intake air temperature sensor | (11) Air intake duct (rear)  |
| (2) Air cleaner case (rear)                         | (12) Clip                    |
| (3) Clip  | (13) Cushion                 |
| (4) Air cleaner element                             | (14) Clip                    |
| (5) Air cleaner case (front)                        | (15) Air intake duct (front) |
| (6) Cushion   | (16) Clamp                   |
| (7) Spacer  | (17) Air intake boot A       |
| (8) Cushion   | (18) Turbo duct              |
| (9) Air cleaner case bracket                        | (19) Air intake boot B       |
| (10) Resonator chamber                              | (20) Cushion                 |
|   | (21) Duct bracket            |

#### **Tightening torque: N·m (kgf·m, ft·lb)**

**T1: 1 (0.1, 0.7)**

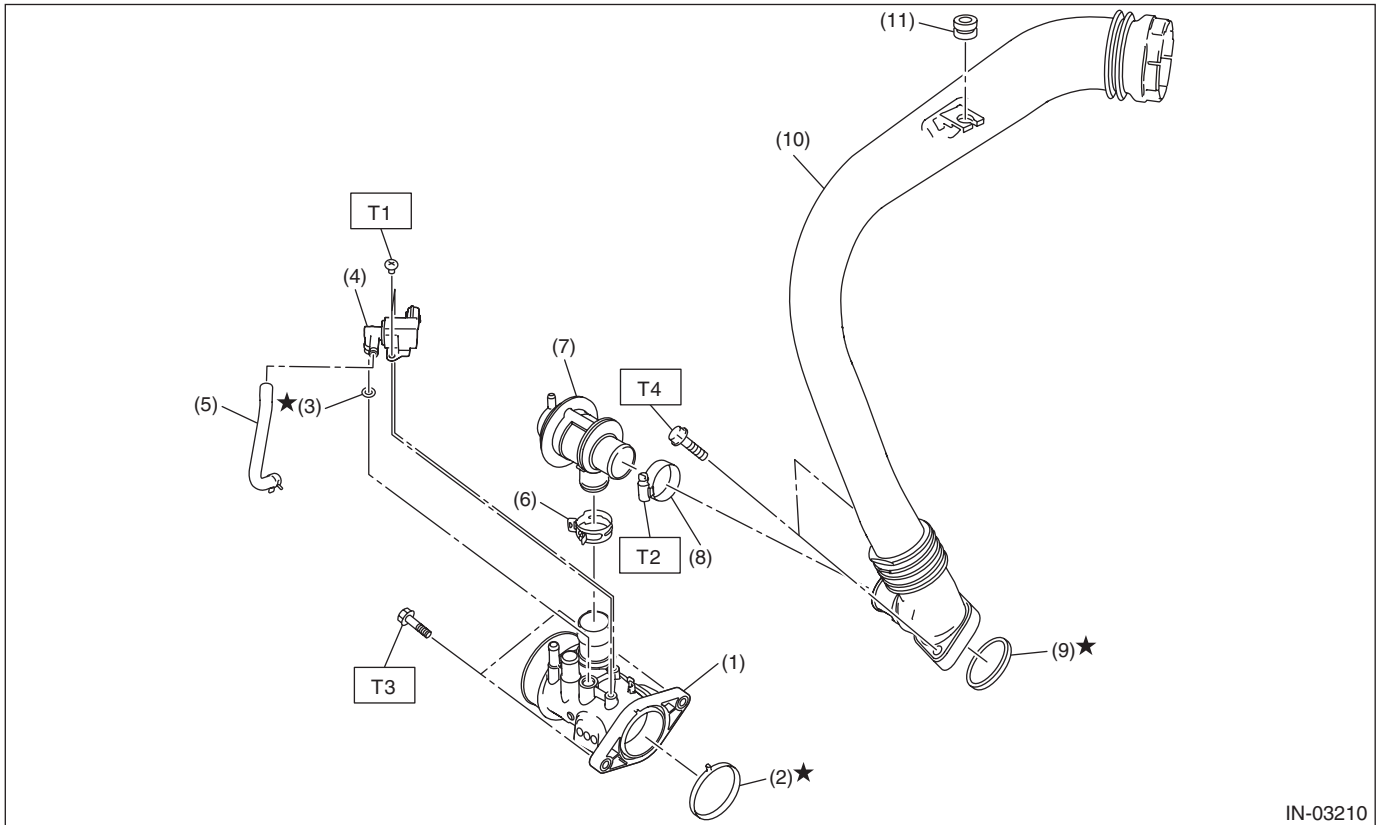
**T2: 2.5 (0.3, 1.8)**

**T3: 6 (0.6, 4.4)**

**T4: 7.5 (0.8, 5.5)**

**T5: 18 (1.8, 13.3)**

## 2. INTAKE DUCT



IN-03210

- |                                      |                        |
|--------------------------------------|------------------------|
| (1) Intake duct No. 1                | (7) Air by-pass valve  |
| (2) O-ring                           | (8) Clamp              |
| (3) O-ring                           | (9) O-ring             |
| (4) Wastegate control solenoid valve | (10) Intake duct No. 2 |
| (5) Vacuum control hose              | (11) Cushion           |
| (6) Clip                             |                        |

### ***Tightening torque: N·m (kgf-m, ft-lb)***

***T1: 2.8 (0.3, 2.1)***

***T2: 3 (0.3, 2.2)***

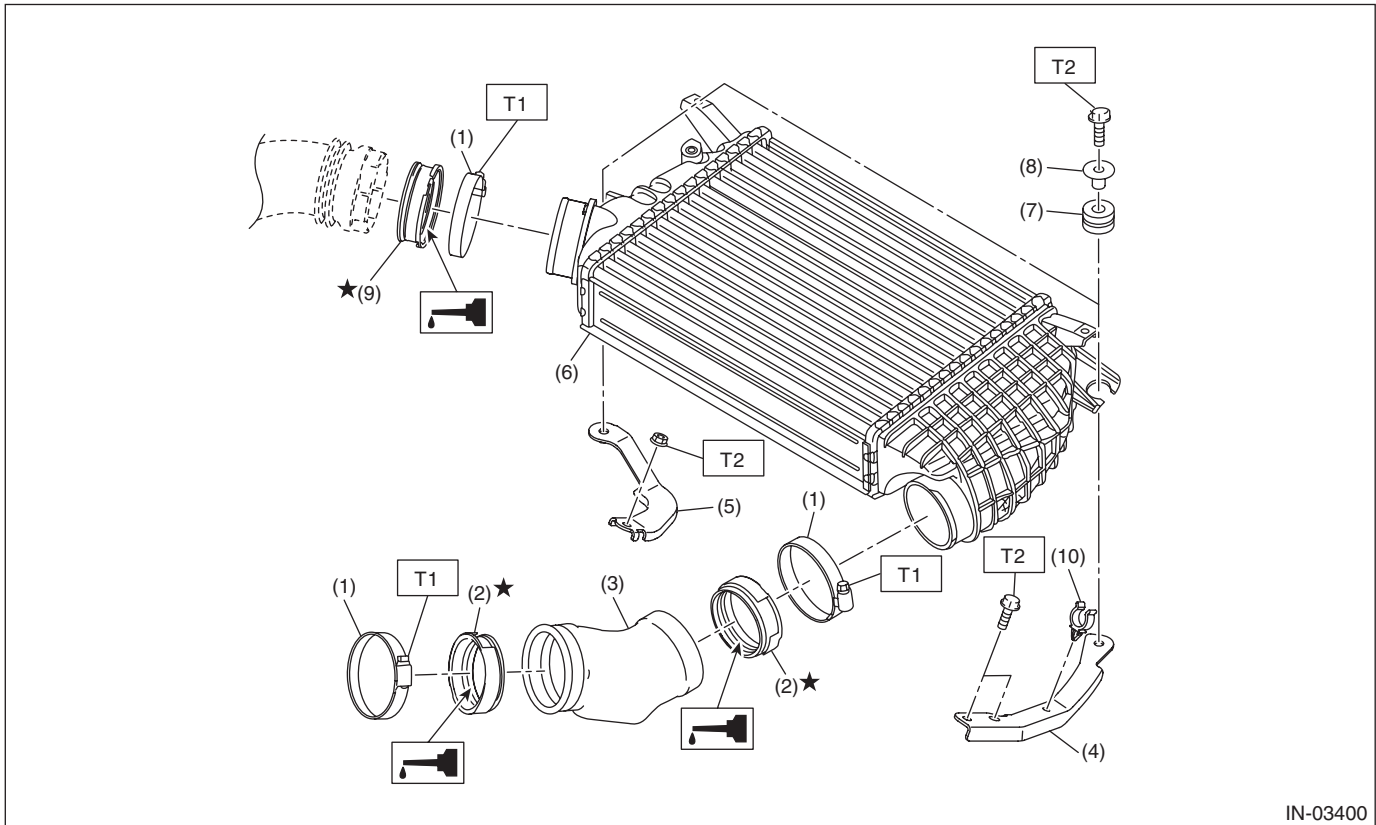
***T3: 6.4 (0.7, 4.7)***

***T4: 16 (1.6, 11.8)***

## General Description

### INTAKE (INDUCTION)

### 3. INTAKE DUCT AND INTERCOOLER



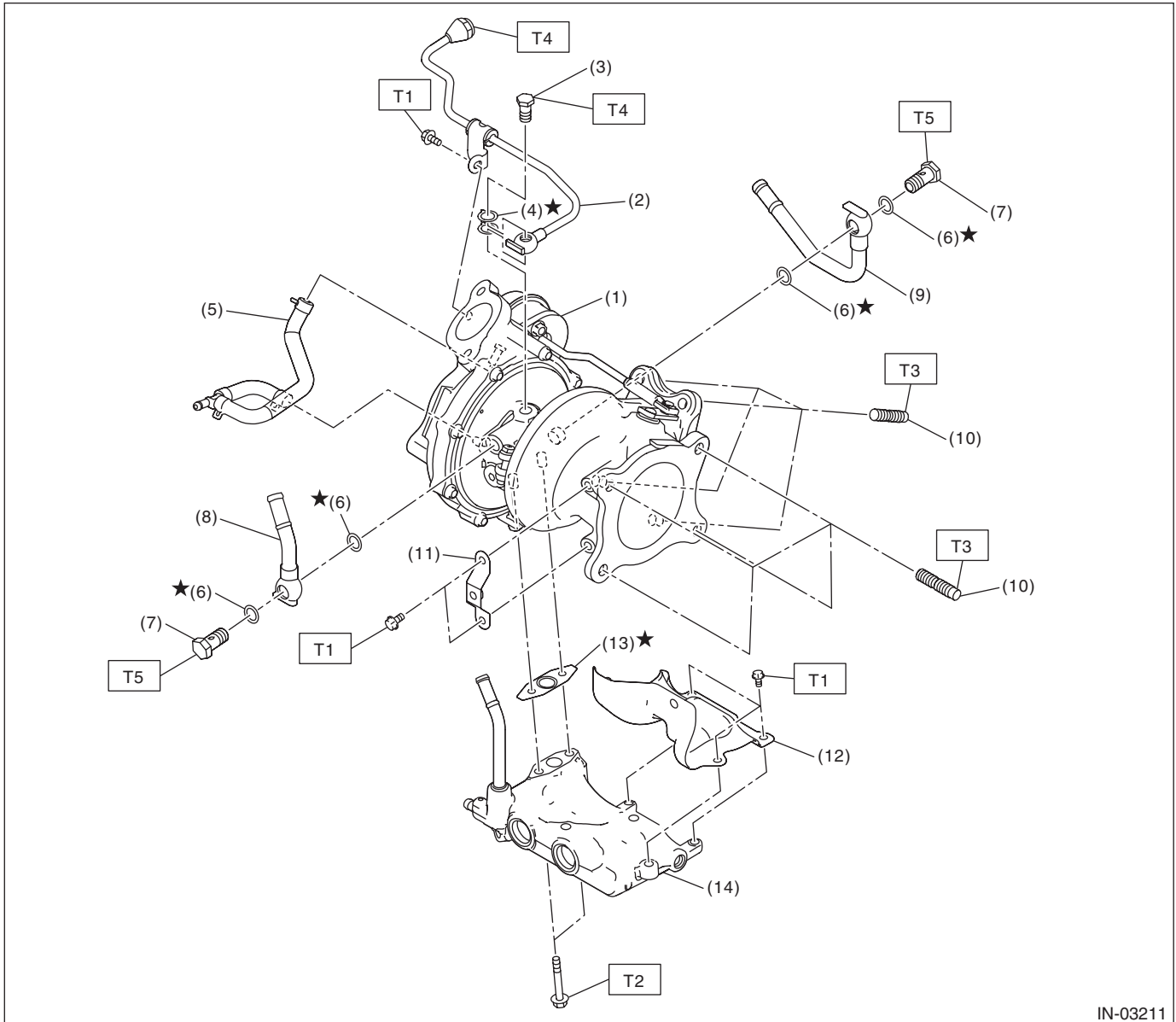
- |                         |                 |
|-------------------------|-----------------|
| (1) Clamp               | (6) Intercooler |
| (2) Insulator           | (7) Cushion     |
| (3) Intake duct No. 3   | (8) Spacer      |
| (4) Intercooler stay LH | (9) Insulator   |
| (5) Intercooler stay RH | (10) Clip       |

**Tightening torque: N·m (kgf-m, ft-lb)**

**T1: 3 (0.3, 2.2)**

**T2: 16 (1.6, 11.8)**

## 4. TURBOCHARGER



IN-03211

- |                           |                         |
|---------------------------|-------------------------|
| (1) Turbocharger          | (8) Turbocharger pipe A |
| (2) Union screw pipe ASSY | (9) Turbocharger pipe B |
| (3) Union bolt            | (10) Stud bolt          |
| (4) Gasket                | (11) Exhaust stay       |
| (5) Air control hose ASSY | (12) Exhaust cover      |
| (6) Gasket                | (13) Gasket             |
| (7) Union bolt            | (14) Oil catch tank     |

### ***Tightening torque: N·m (kgf-m, ft-lb)***

***T1: 6.4 (0.7, 4.7)***

***T2: 10.5 (1.1, 7.7)***

***T3: 14.7 (1.5, 10.8)***

***T4: 16 (1.6, 11.8)***

***T5: 31.5 (3.2, 23.2)***

## General Description

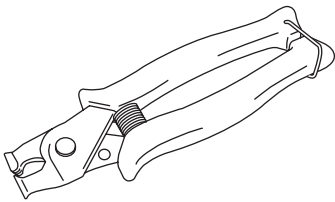
### INTAKE (INDUCTION)

#### B: CAUTION

- Prior to starting work, pay special attention to the following:
  1. Always wear work clothes, a safety cap, protective shoes. Additionally, wear a helmet, protective goggles, etc. if necessary.
  2. Protect the vehicle using a seat cover, fender cover, etc.
  3. Prepare the service tools, clean cloth, containers to catch grease and oil, etc.
- Vehicle components are extremely hot immediately after driving. Be wary of receiving burns from heated parts.
- When performing a repair, identify the cause of trouble and avoid unnecessary removal, disassembly and replacement.
- Before disconnecting connectors of sensors or units, be sure to disconnect the ground cable from battery.
- Always use the jack-up point when the shop jacks or rigid racks are used to support the vehicle.
- Remove contamination including dirt and corrosion before removal, installation, disassembly or assembly.
- Keep the removed parts in order and protect them from dust and dirt.
- All removed parts, if to be reused, should be reinstalled in the original positions with attention to the correct directions, etc.
- Bolts, nuts and washers should be replaced with new parts as required.
- Be sure to tighten the fasteners including bolts and nuts to the specified torque.

#### C: PREPARATION TOOL

##### 1. SPECIAL TOOL

ILLUSTRATION	TOOL NUMBER	DESCRIPTION	REMARKS
 ST18353AA000	18353AA000	CLAMP PLIERS	<ul style="list-style-type: none"><li>• Used for removing and installing the PCV hose assembly.</li><li>• This tool is made by the French company CAILLAU. (code) 54.0.000.205</li></ul> To make it easier to obtain, it has been provided with a tool number.

##### 2. GENERAL TOOL

TOOL NAME	REMARKS
TORX® socket E10	Used for disassembling and assembling the turbocharger.
Mighty Vac	Used for checking waste gate actuator and air by-pass valve.