

# General Description

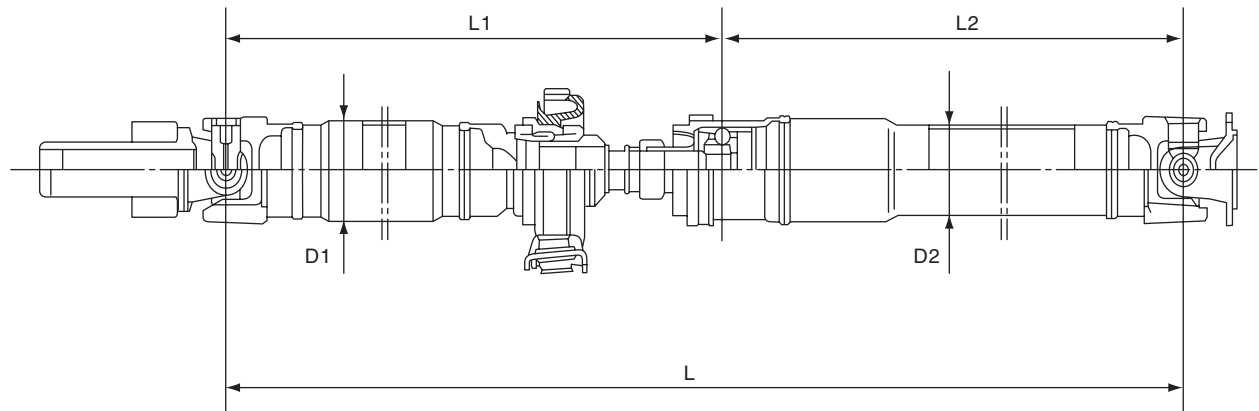
## DRIVE SHAFT SYSTEM

### 1. General Description

#### A: SPECIFICATION

##### 1. PROPELLER SHAFT

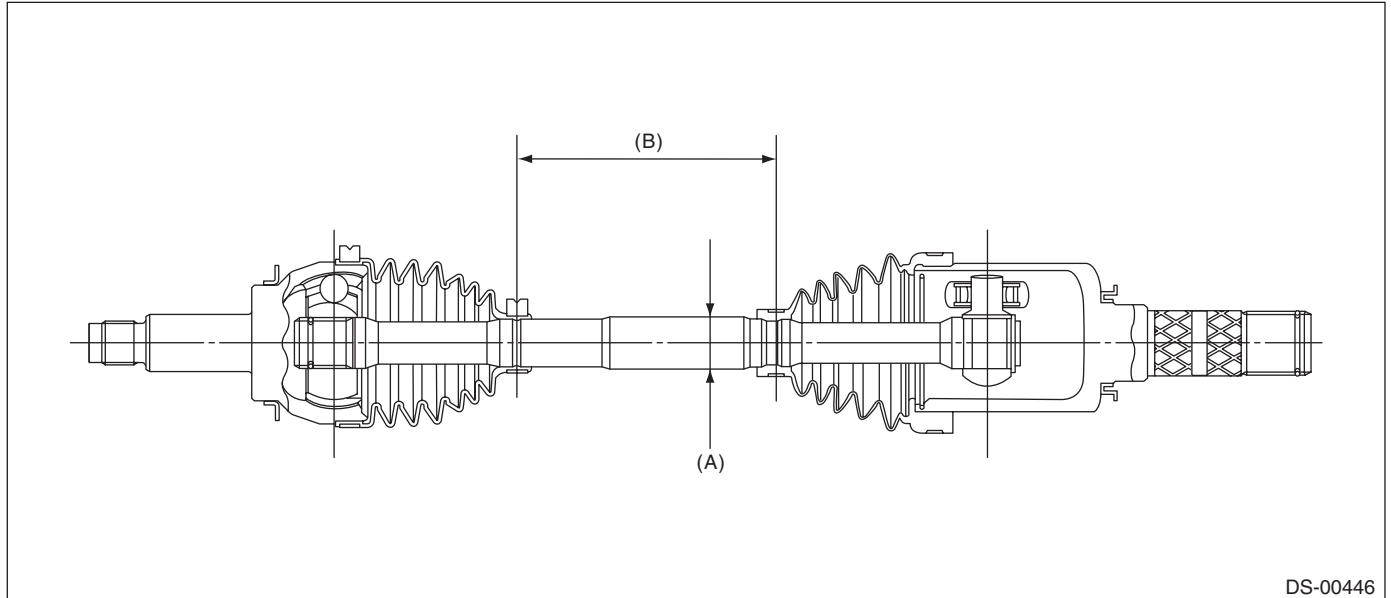
Car line		All models
Propeller shaft type		EDJ
Front propeller shaft joint-to-joint length: $L_1$	CVT (TR690)	578 mm (22.76 in)
	CVT (TR580)	675.5 mm (26.59 in)
	MT	735.5 mm (28.96 in)
Rear propeller shaft joint-to-joint length: $L_2$		723 mm (28.46 in)
Outer diameter of tube:	$D_1$	63.5 mm (2.50 in)
	$D_2$	57.5 mm (2.26 in)



DS-00430

## 2. FRONT AXLE SHAFT ASSEMBLY

Model	Axle shaft type	Axle diameter $\phi$ mm (in)	Axle length mm (in)
MT	EBJ + PTJ	22 (0.87)	372.4 (14.66)
CVT	EBJ + PTJ	22 (0.87)	360 (14.17)



DS-00446

(A) Axle diameter

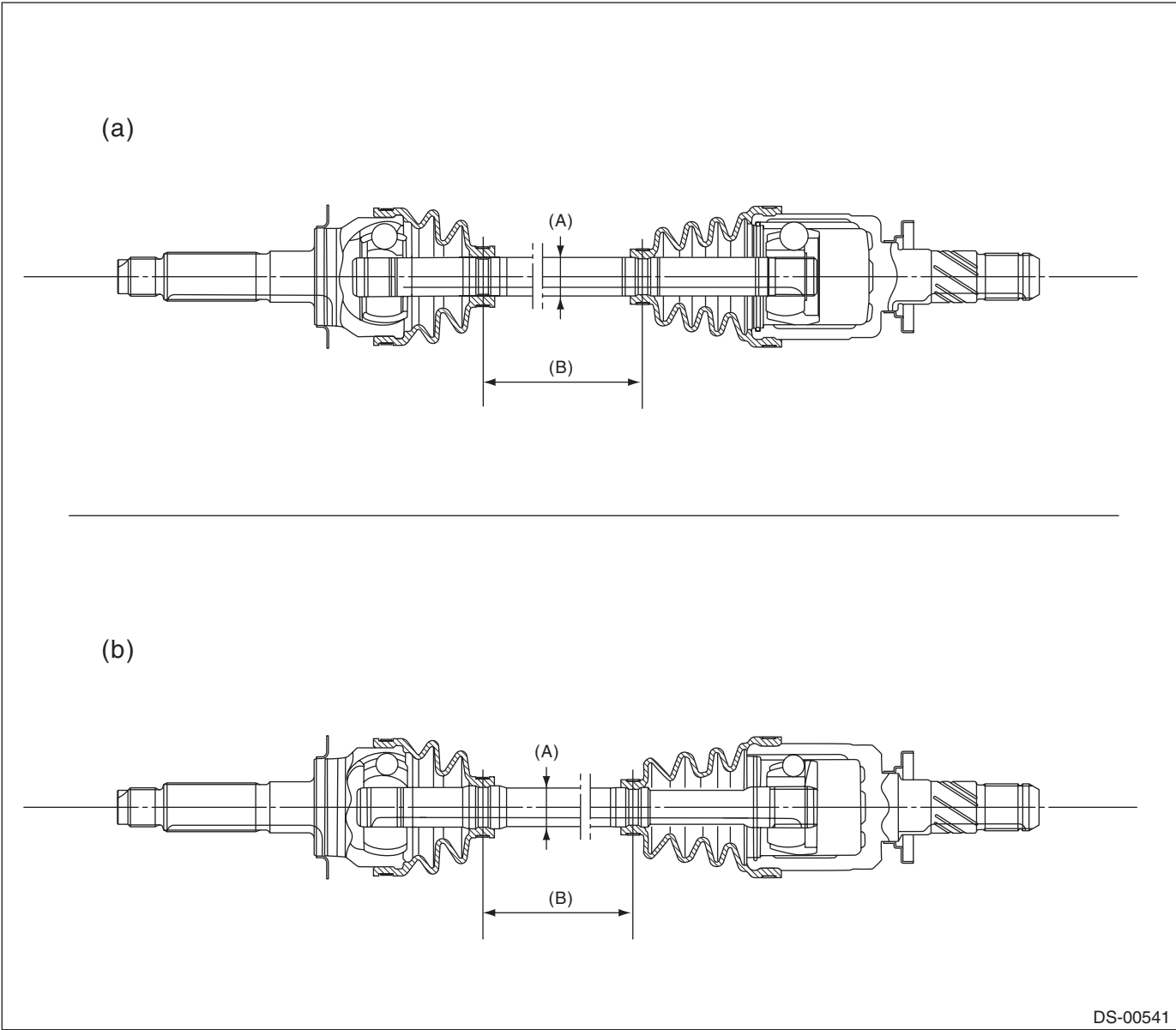
(B) Axle length

# General Description

## DRIVE SHAFT SYSTEM

### 3. REAR AXLE SHAFT ASSEMBLY

T/M type	Axle shaft type	Axle diameter $\phi$ mm (in)	Axle length mm (in)
MT,TR690	EBJ + EDJ	22 (0.87)	384.4 (15.13)
TR580	BJ + DOJ	22 (0.87)	399.2 (15.72)

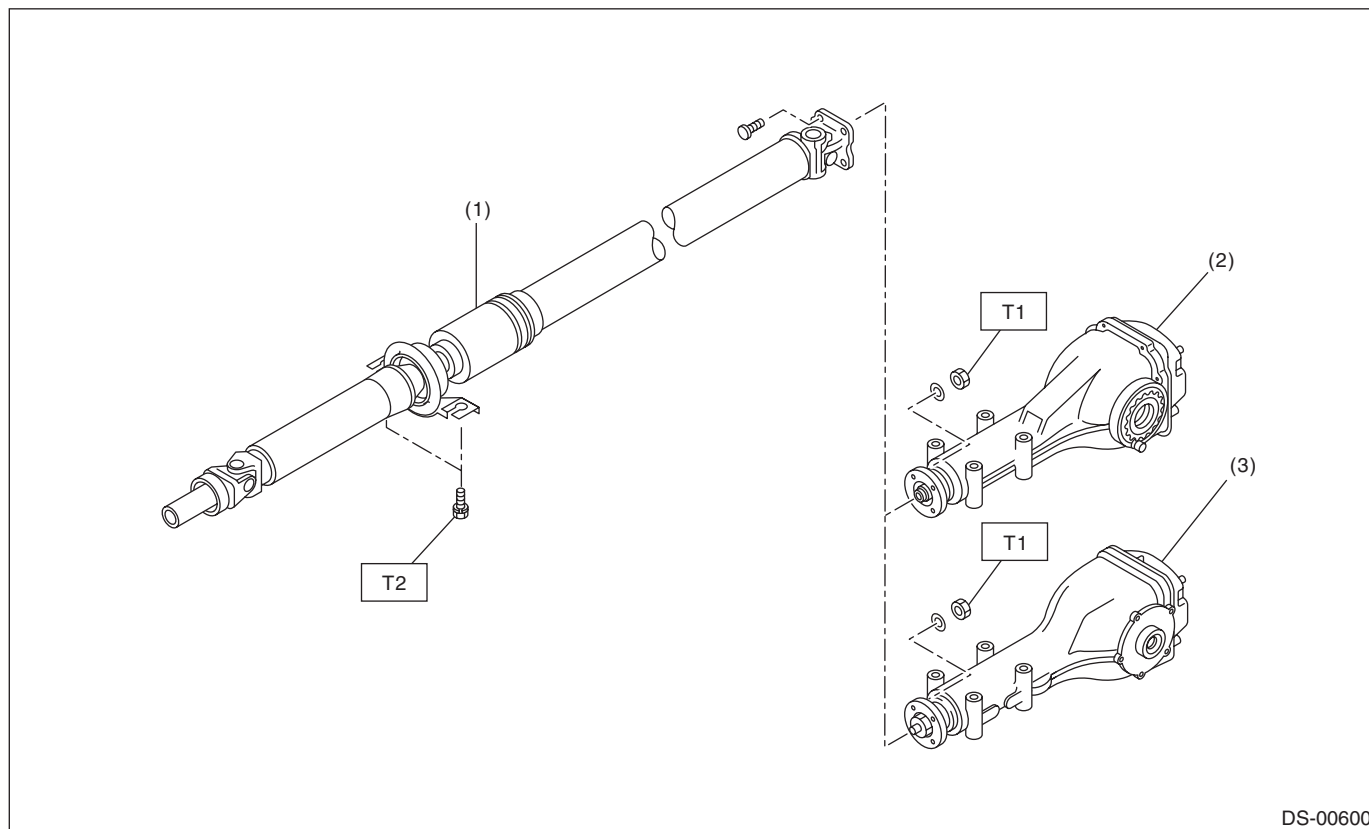


(a) BJ + DOJ type

(b) EBJ + EDJ type

(A) Axle diameter

(B) Axle length

**B: COMPONENT****1. PROPELLER SHAFT**

DS-00600

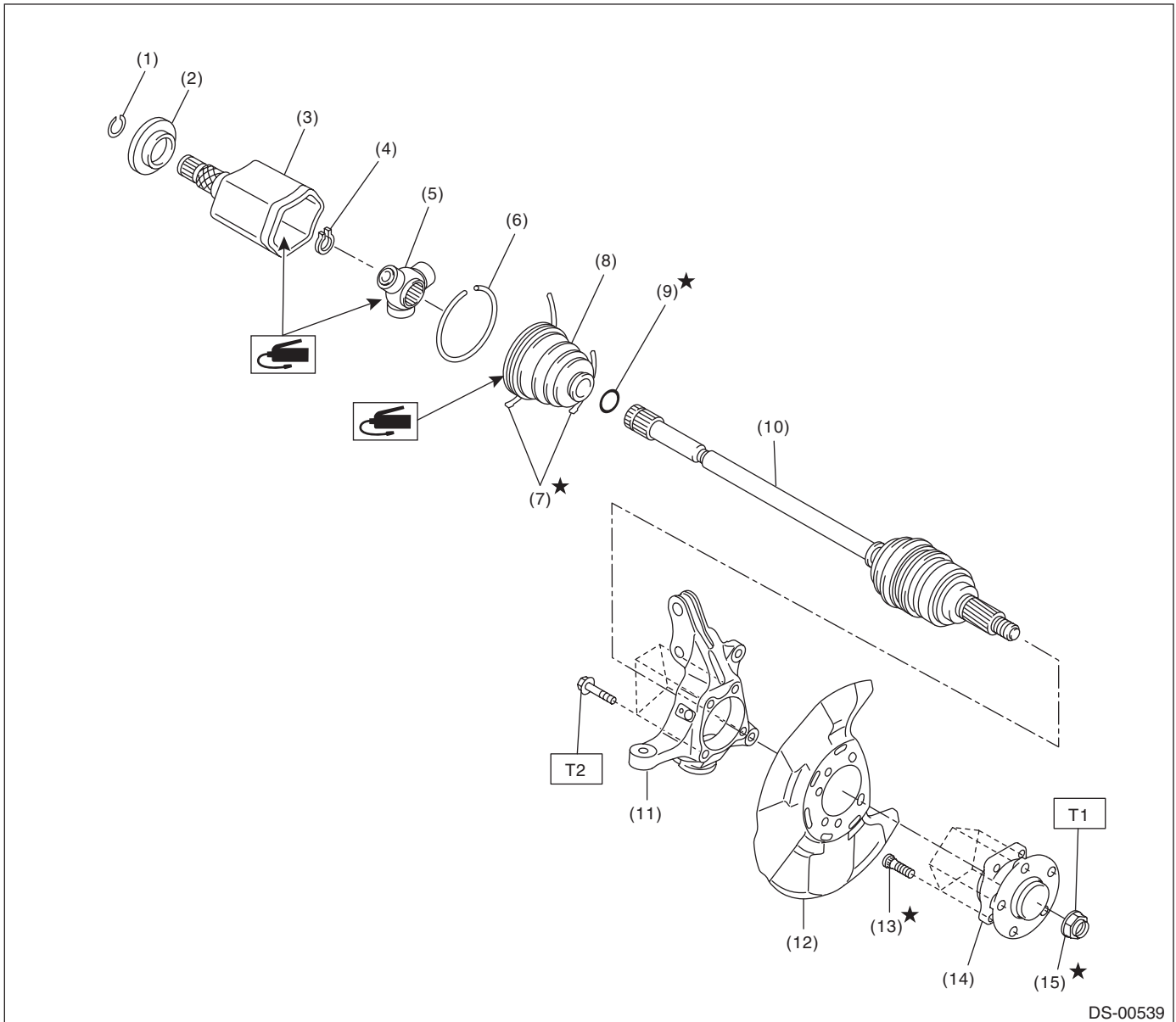
- (1) Propeller shaft
- (2) Rear differential (VA1-type)
- (3) Rear differential (T-type)

***Tightening torque: N·m (kgf-m, ft-lb)******T1: 31 (3.16, 22.9)******T2: 52 (5.30, 38.4)***

# General Description

## DRIVE SHAFT SYSTEM

### 2. FRONT AXLE



DS-00539

- (1) Circlip
- (2) Baffle plate
- (3) Outer race (PTJ)
- (4) Snap ring
- (5) Trunnion
- (6) Snap ring
- (7) Boot band

- (8) Boot (PTJ)
- (9) O-ring
- (10) EBJ shaft ASSY
- (11) Housing ASSY - front axle
- (12) Back plate - front brake
- (13) Bolt - hub

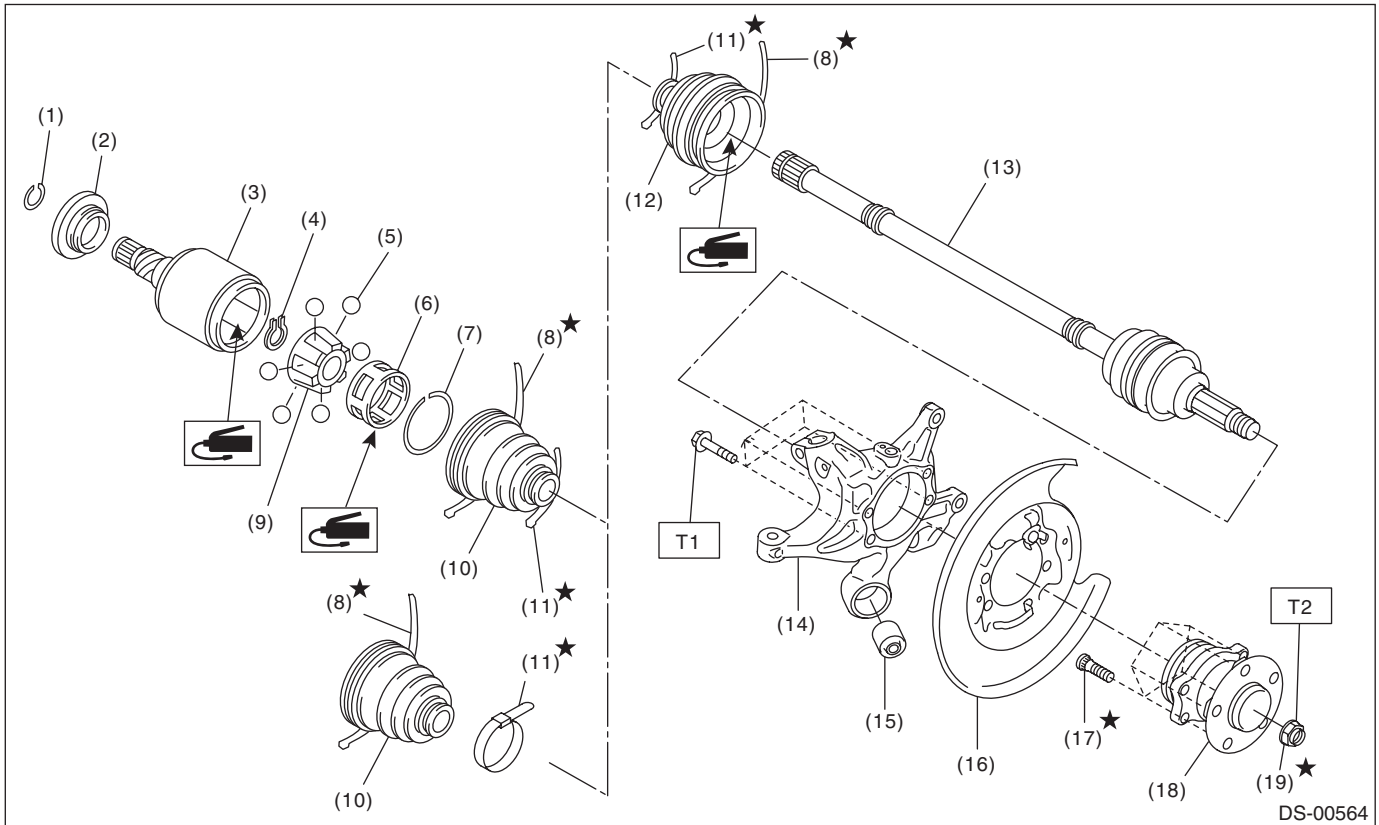
- (14) Hub unit COMPL - front axle
- (15) Nut - axle

**Tightening torque: N·m (kgf-m, ft-lb)**

**T1: 220 (22.43, 162.3)**

**T2: 65 (6.63, 47.9)**

### 3. REAR AXLE



- |  |   |                                 |
|--|---|---------------------------------|
| (1) Circlip A                            | (9) Inner race  | (17) Bolt - hub                 |
| (2) Baffle plate                         | (10) Boot - drive shaft (DOJ)<br>Boot - drive shaft (EDJ)                                     | (18) Hub unit COMPL - rear axle |
| (3) Outer race (DOJ)<br>Outer race (EDJ) | (11) Band - drive shaft B (locking tab<br>type)<br>Band - drive shaft B (double loop<br>type) | (19) Nut - axle                 |
| (4) Snap ring                            | (12) Boot - drive shaft (BJ)<br>Boot - drive shaft (EBJ)                                      |                                 |
| (5) Ball                                 | (13) Shaft ASSY (BJ)<br>Shaft ASSY (EBJ)  |                                 |
| (6) Cage                                 | (14) Housing ASSY - rear axle   |                                 |
| (7) Circlip B                            | (15) Bushing - trailing link  |                                 |
| (8) Band - drive shaft A                 | (16) Back plate - rear brake  |                                 |

**Tightening torque: N-m (kgf-m, ft-lb)**

**T1: 65 (6.63, 47.9)**

**T2: 190 (19.37, 140.13)**

## General Description

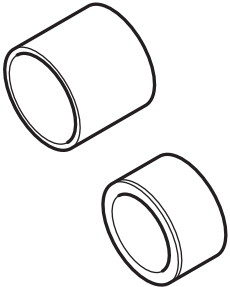
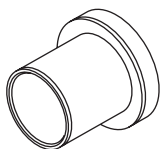
### DRIVE SHAFT SYSTEM

#### C: CAUTION

- Wear appropriate work clothing, including a helmet, protective goggles and protective shoes when performing any work.
- Remove contamination including dirt and corrosion before removal, installation or disassembly.
- Keep the disassembled parts in order and protect them from dust and dirt.
- Before removal, installation or disassembly, be sure to clarify the failure. Avoid unnecessary removal, installation, disassembly and replacement.
- Vehicle components are extremely hot after driving. Be wary of receiving burns from heated parts.
- Use SUBARU genuine grease etc. or equivalent. Do not mix grease etc. of different grades or manufacturers.
- Be sure to tighten fasteners including bolts and nuts to the specified torque.
- Place shop jacks or rigid racks at the specified points.
- Apply grease onto sliding or revolving surfaces before installation.
- Before installing snap rings, apply sufficient amount of grease to avoid damage and deformation.
- Before securing a part on a vise, place cushioning materials such as wood blocks, aluminum plates, or waste cloth between the part and the vise.
- When the suspension-related components have been removed and installed, be sure to adjust the steering sensor. <Ref. to VDC-23, VDC SENSOR MIDPOINT SETTING MODE, ADJUSTMENT, VDC Control Module and Hydraulic Control Unit (VDCCM&H/U).>

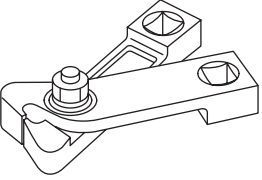
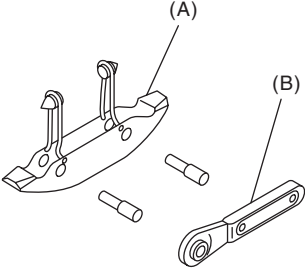
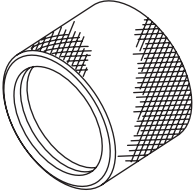
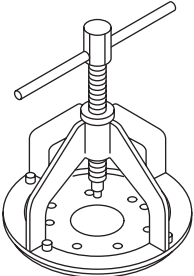
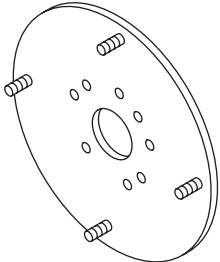
#### D: PREPARATION TOOL

##### 1. SPECIAL TOOL

ILLUSTRATION	Part No.	DESCRIPTION	REMARKS
 ST20099PA010	20099PA010	INSTALLER & REMOVER	<ul style="list-style-type: none"><li>• Used for replacing the bushing - trailing link of the housing assembly - rear axle.</li><li>• Used together with BUSHING REMOVER (20099FG000).</li></ul>
 ST20099FG000	20099FG000	BUSHING REMOVER	<ul style="list-style-type: none"><li>• Used for replacing the bushing - trailing link of the housing assembly - rear axle.</li><li>• Used together with base part of INSTALLER &amp; REMOVER (20099PA010).</li></ul>

# General Description

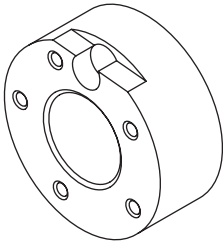
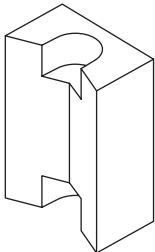
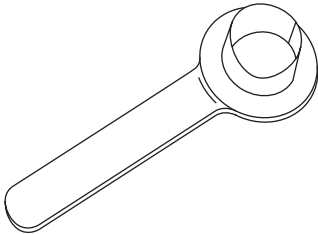
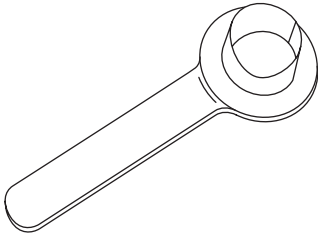
## DRIVE SHAFT SYSTEM

ILLUSTRATION	Part No.	DESCRIPTION	REMARKS
 <p>ST28099AC000</p>	28099AC000	BOOT BAND PLIER	Used for tightening the band - boot. (for front axle shaft)
 <p>ST-925091000</p>	925091000	BAND TIGHTENING TOOL	Used for tightening the band - boot. (A) Jig for the band (B) Ratchet wrench
 <p>ST18675AA000</p>	18675AA000	DIFFERENTIAL SIDE OIL SEAL INSTALLER	Used for installing the differential side retainer oil seal.
 <p>ST-926470000</p>	926470000	AXLE SHAFT PULLER	<ul style="list-style-type: none"> <li>Used for removing the axle shaft.</li> <li>Used together with AXLE SHAFT PULLER PLATE (28099PA110).</li> </ul>
 <p>ST28099PA110</p>	28099PA110	AXLE SHAFT PULLER PLATE	Exchange with the plate of the AXLE SHAFT PULLER (926470000) to use.



## General Description

### DRIVE SHAFT SYSTEM

ILLUSTRATION	Part No.	DESCRIPTION	REMARKS
 <p style="text-align: center;">ST-927080000</p>	927080000	HUB STAND	Used for assembling the bolt - hub of the hub.
 <p style="text-align: center;">ST28399AG000</p>	28399AG000	HUB STAND	Used for extracting the bolt - hub.
 <p style="text-align: center;">ST28399SA010</p>	28399SA010	OIL SEAL PROTECTOR	<ul style="list-style-type: none"> <li>• Used for installing the front axle shaft into the front differential.</li> <li>• For protecting the oil seal.</li> </ul>
 <p style="text-align: center;">ST28099PA090</p>	28099PA090	OIL SEAL PROTECTOR	<ul style="list-style-type: none"> <li>• Used for installing the rear axle shaft into the rear differential.</li> <li>• For protecting the oil seal.</li> </ul>

## 2. GENERAL TOOL

TOOL NAME	REMARKS
Tie-rod ball joint puller	Used for disconnecting joints.
Dial gauge	Used for inspecting the propeller shaft run-out.
Extension cap	Used for preventing leakage of gear oil or ATF.
Crowbar	Used for extracting the axle shaft.
Needle nose pliers	Used for tightening the band - boot of the rear axle shaft. <ul style="list-style-type: none"> <li>• Snap-on 96BCP</li> <li>Or equivalent.</li> </ul>