

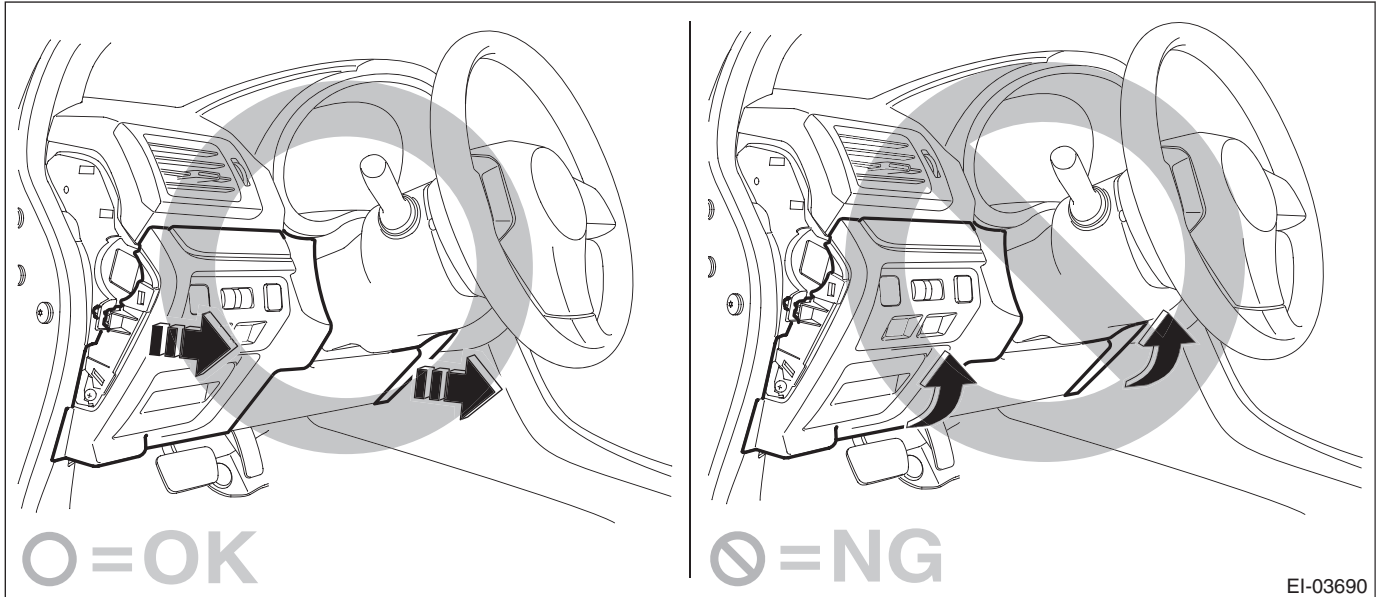
## 15.Stop Light Switch

### A: REMOVAL

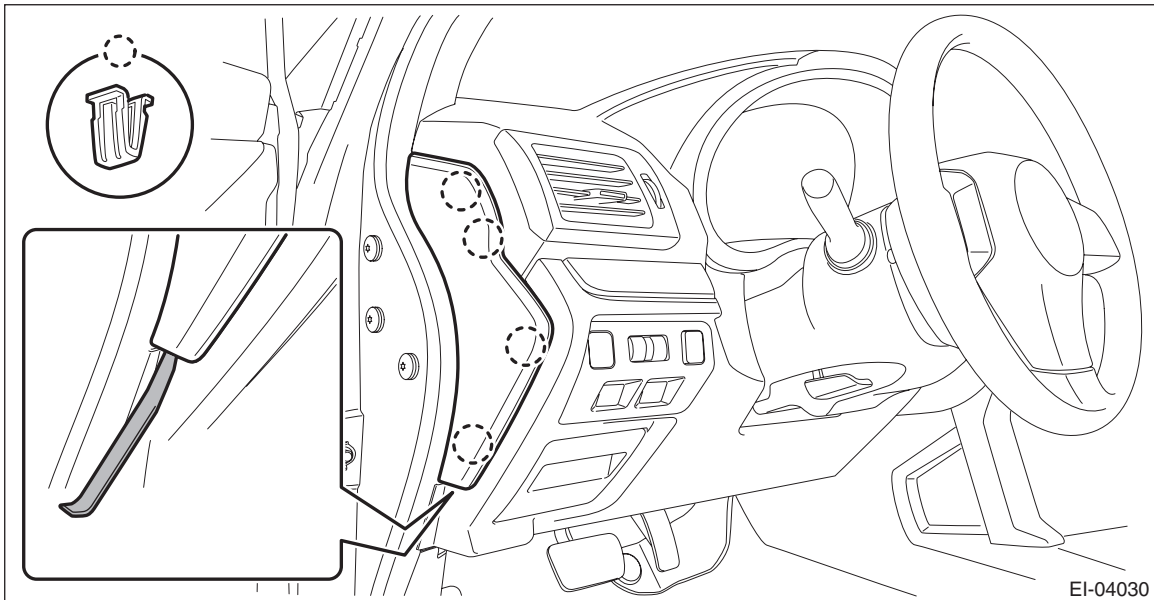
- 1) Disconnect the ground cable from battery and wait for at least 60 seconds before starting work.
- 2) Remove the cover assembly - instrument panel LWR driver.

#### CAUTION:

When removing the cover assembly - instrument panel LWR driver, be sure to pull it toward you. If attempting to remove by turning it upward, the claws may be damaged.



- (1) Remove the clips, and remove the cover - instrument panel side LH.



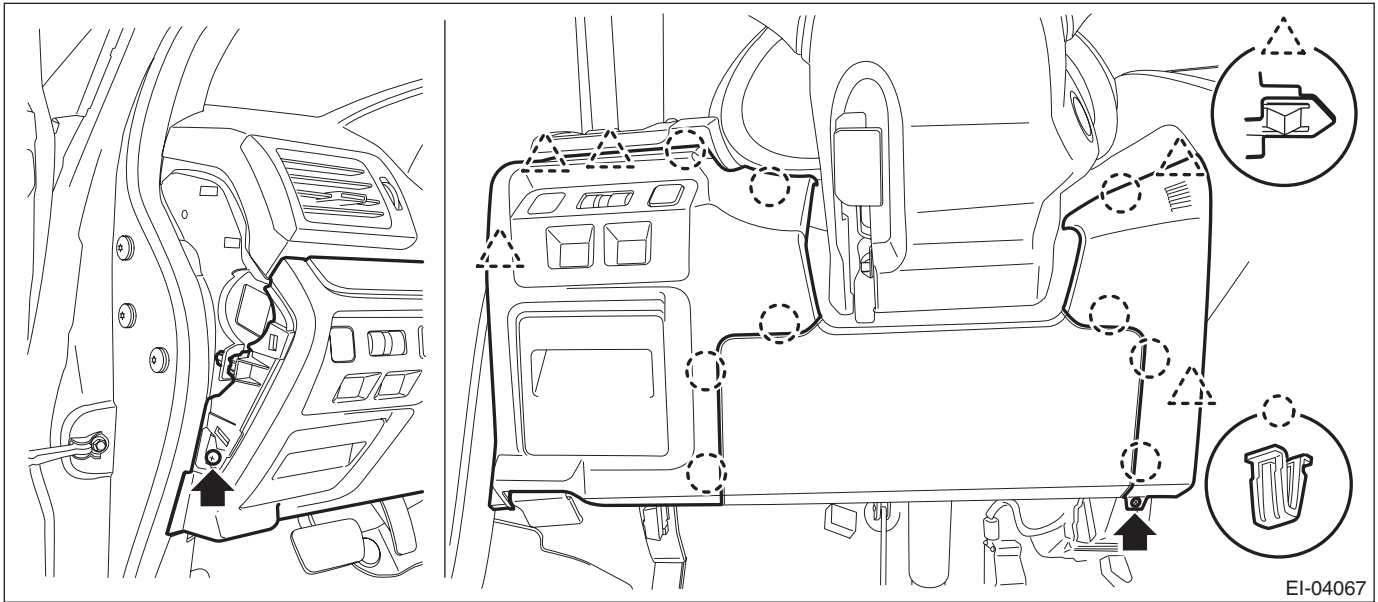
#### NOTE:

- Using a plastic remover, open the cover - instrument panel side LH.
- (2) Remove the screws and release the clips and claws.

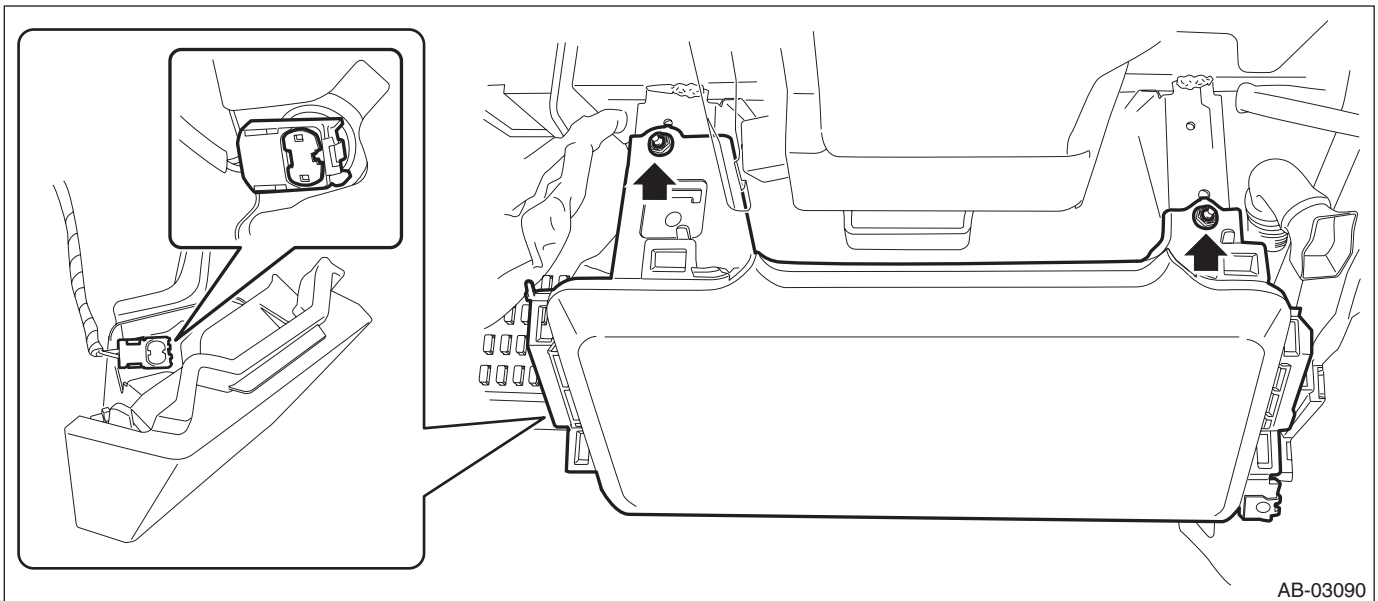
## Stop Light Switch

BRAKE

(3) Disconnect the harness connectors, and remove the cover assembly - instrument panel LWR driver INN and OUT.



3) Remove the nuts to remove the knee airbag module and disconnect the harness connector. <Ref. to AB-21, DRIVER'S AIRBAG MODULE, KNEE AIRBAG MODULE, CURTAIN AIRBAG MODULE AND PRETENSIONER, PROCEDURE, Airbag Connector.>

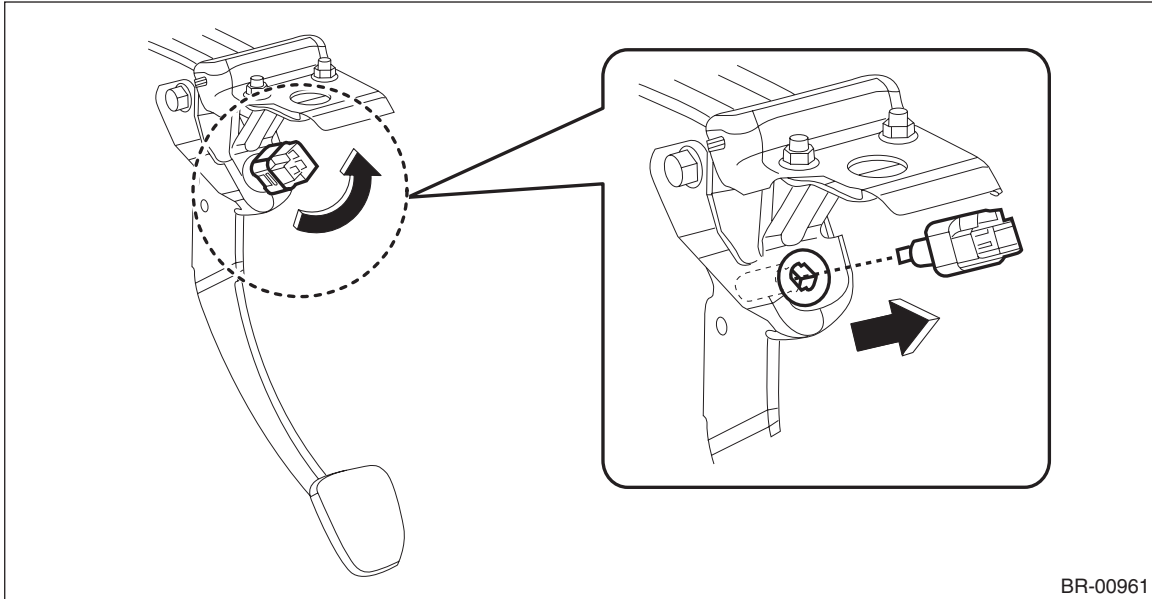


# Stop Light Switch

## BRAKE

### 4) Remove the switch - stop light.

- (1) Disconnect the switch - stop light connector.
- (2) Remove the switch - stop light by turning it counterclockwise.

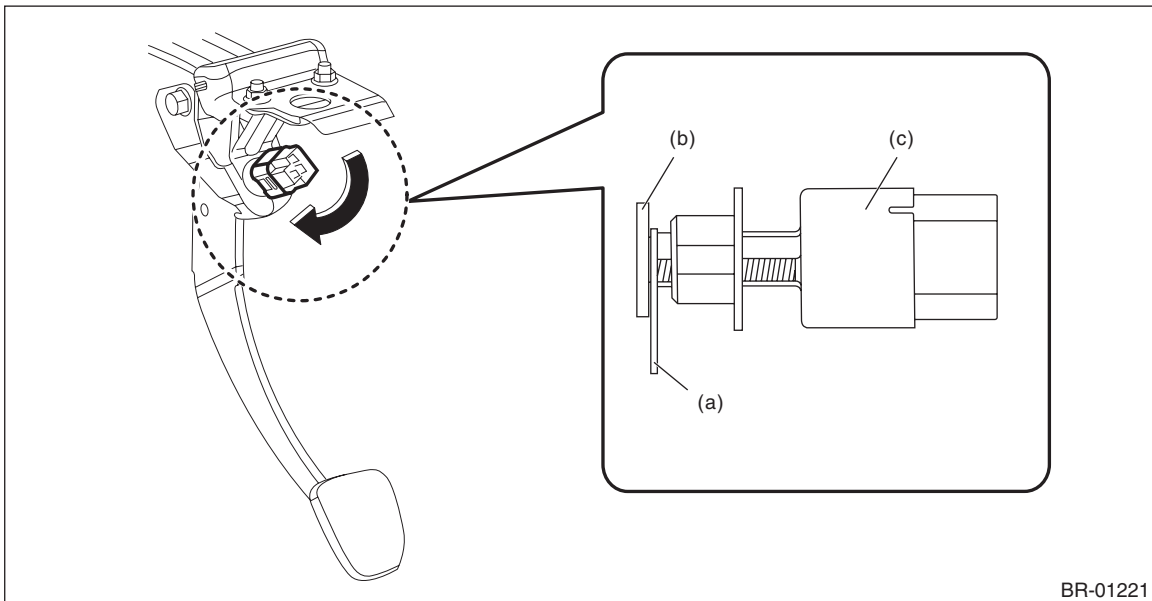


## B: INSTALLATION

### 1) Install the switch - stop light.

#### CAUTION:

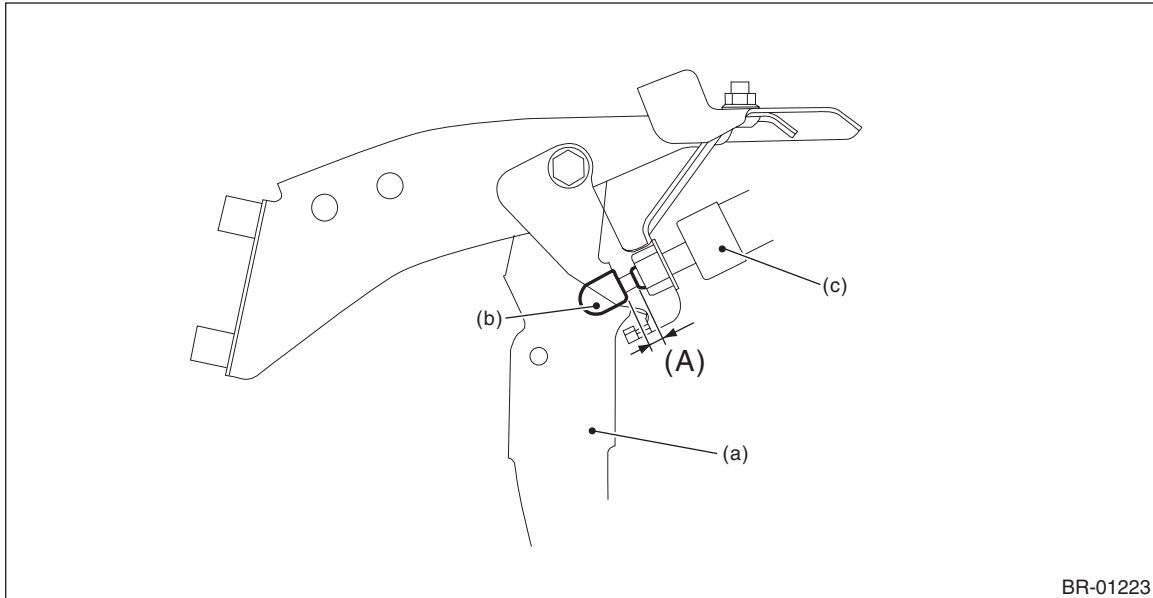
- **When pushing the switch - stop light against the spacer, do not apply excessive force.**
- **Tighten the switch - stop light with a turning torque of 3.0 N·m (0.31 kgf-m, 2.2 ft-lb) or less.**
  - (1) Prepare the spacer (a) with approx. 0.5 mm (0.020 in) in thickness.
  - (2) Align the groove of the holder - stop light switch with the cutout portion of push rod for the switch - stop light.
  - (3) While pulling up the brake pedal toward you, set the spacer (a) between the stopper (b) and the switch - stop light (c).
  - (4) Insert the switch - stop light (c) and turn it clockwise by 45° to secure.



- 2) Remove the spacer (a).
- 3) Pull up the brake pedal and make sure that the clearance (A) between the switch - stop light end part and the stopper is 1.5 — 2.5 mm (0.06 — 0.1 in).

**Specification:**

**Clearance (A) of the switch - stop light: 1.5 — 2.5 mm (0.06 — 0.1 in)**



(a) Brake pedal

(b) Stopper

(c) Switch - stop light

- 4) Connect the switch - stop light connector.
- 5) Install the knee airbag module and the cover assembly - instrument panel LWR driver. <Ref. to AB-41, INSTALLATION, Knee Airbag Module.>
- 6) Connect the battery ground terminal.
- 7) Check that the brake light operate properly.

**NOTE:**

Operate the brake pedal by 5 mm (0.2 in) or more, and check that the stop light illuminates.

- 8) Check the operation of switch - stop light.

- (1) Turn to IG OFF and connect the Subaru Select Monitor.
- (2) Turn to IG ON and display the data of the "Brake Switch" and "Pressure Sensor Output" according to the Subaru Select Monitor display.
- (3) Check that the switch - stop light is OFF with the brake pedal not depressed.
- (4) Quickly depress the brake pedal 5 times.
- (5) Slowly release the brake pedal depressed at the fifth time and check that the master cylinder pressure is within the standard value when the switch - stop light changes from OFF to ON.

**Specification:**

**Less than 1 Mpa (10 bar)**

# Stop Light Switch

BRAKE

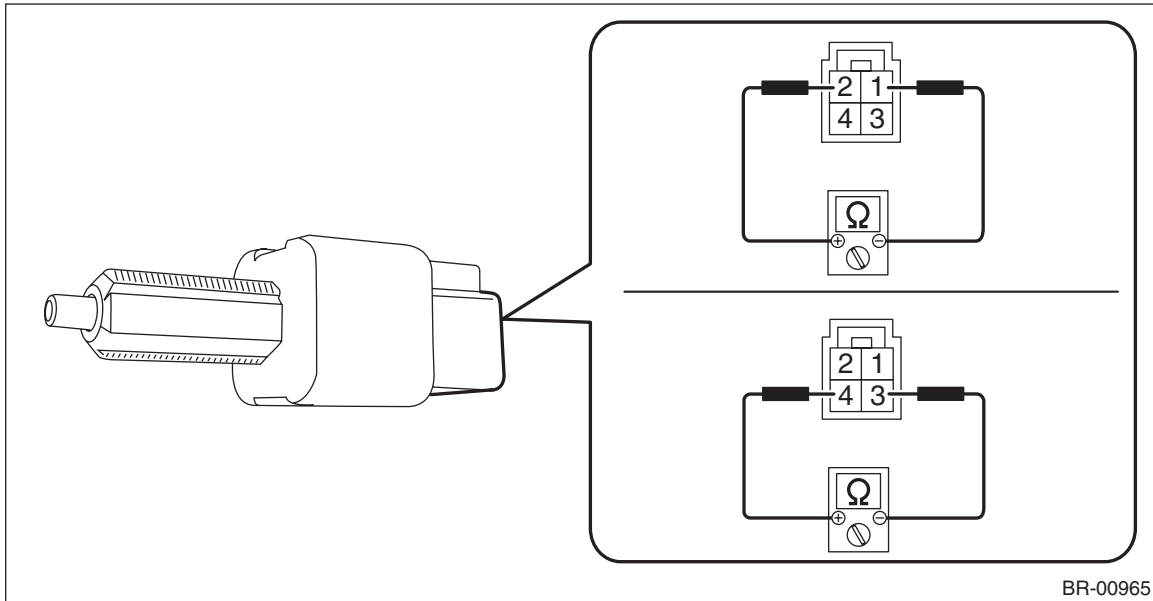
## C: INSPECTION

### 1. INSPECT THE RESISTANCE

- 1) Disconnect the switch - stop light connector.
- 2) Check the resistance between the terminals of switch - stop light.

**Preparation tool:**

**Circuit tester**



Terminal No.	Inspection conditions	Standard
1 — 2	When brake pedal is depressed	1 MΩ or more
	When brake pedal is released	Less than 1 Ω
3 — 4	When brake pedal is depressed	Less than 1 Ω
	When brake pedal is released	1 MΩ or more

- 3) Replace the switch - stop light if the inspection result is not within the standard value.