

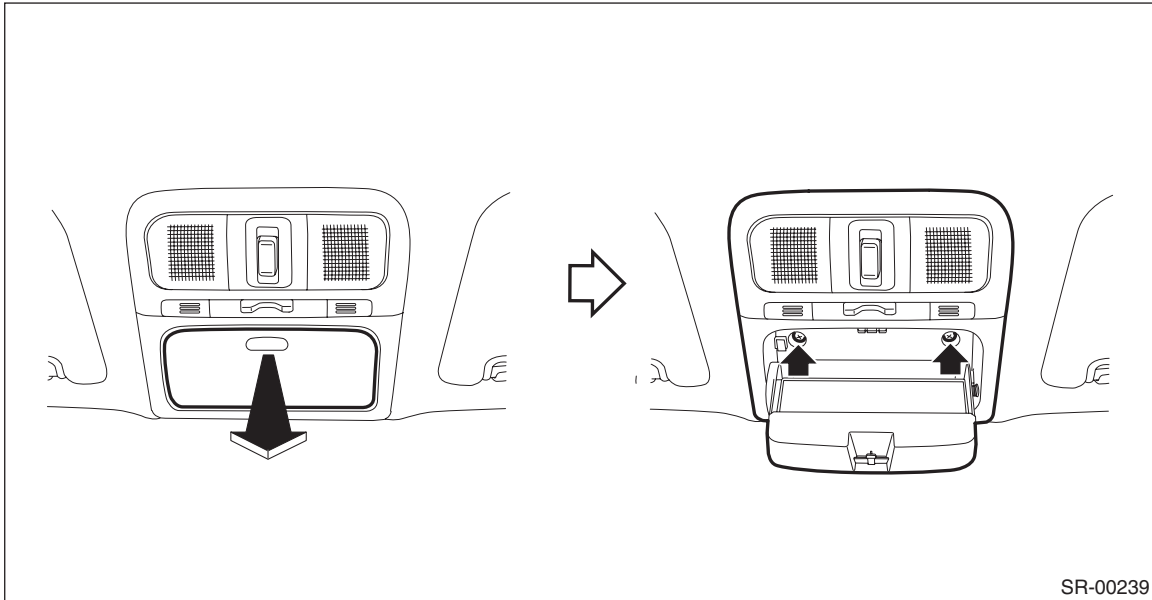
## Sunroof Motor

SUNROOF/T-TOP/CONVERTIBLE TOP (SUNROOF)

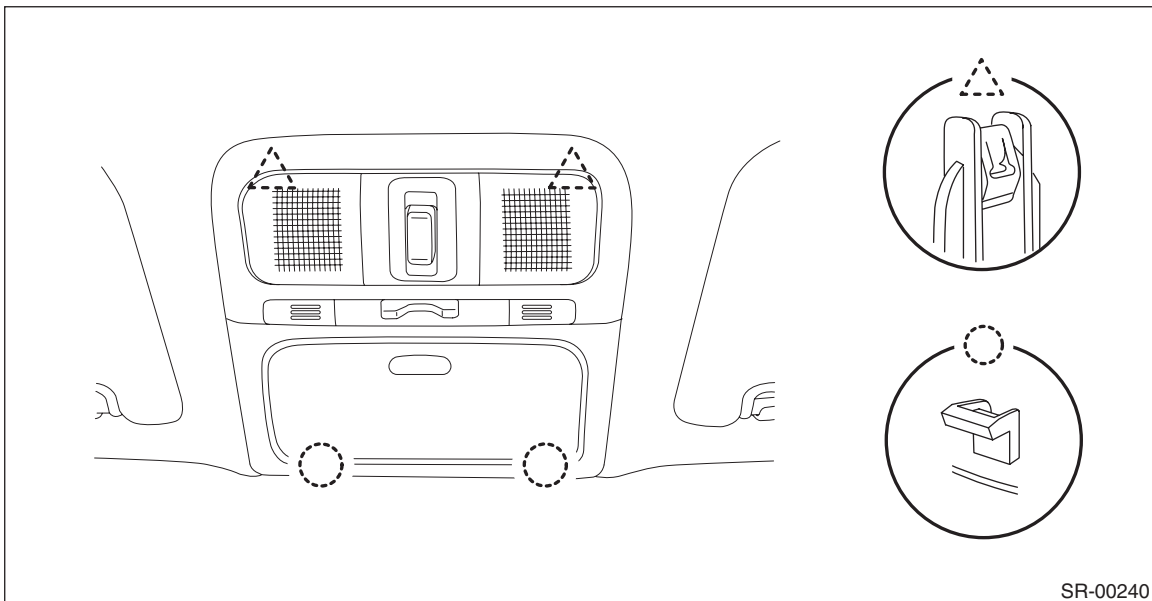
### 6. Sunroof Motor

#### A: REMOVAL

- 1) Completely close the lid assembly - sunroof.
- 2) Disconnect the ground cable from battery.
- 3) Remove the light assembly - map. (Models without EyeSight)
  - (1) Remove the screws.



- (2) Release the clips and pull out the light assembly - map to disconnect the connectors.



- 4) Remove the stereo camera cover. (Models with EyeSight) <Ref. to ES-11, REMOVAL, Stereo Camera.>

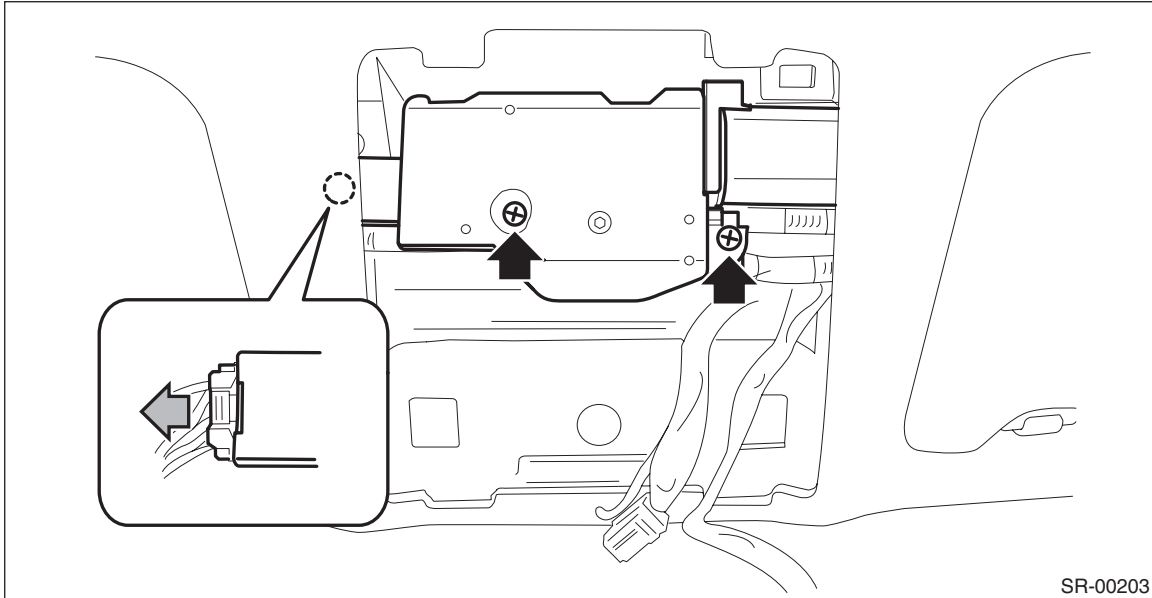
# Sunroof Motor

SUNROOF/T-TOP/CONVERTIBLE TOP (SUNROOF)

- 5) Remove the motor assembly - sunroof.
  - (1) Disconnect the harness connector.
  - (2) Remove the screws and remove the motor assembly - sunroof.

## CAUTION:

**When removing the motor assembly - sunroof, secure the cable assembly so that it does not move.**



## B: INSTALLATION

### CAUTION:

- When installing the motor assembly - sunroof, be careful not to move the cable assembly.
- For installation of the stereo camera cover, refer to “INSTALLATION”, “Stereo Camera Cover” in the “EyeSight” section and observe the precautions for installation. <Ref. to ES-15, INSTALLATION, Stereo Camera.>

- 1) Install the motor assembly - sunroof.
- 2) Install the light assembly - map. (Models without EyeSight)
- 3) Install the stereo camera cover. (Models with EyeSight) <Ref. to ES-15, INSTALLATION, Stereo Camera.>
- 4) Connect the battery ground terminal.
- 5) Perform the initialize operation. <Ref. to SR-6, INITIALIZE OPERATION, OPERATION, Sunroof Control System.>
- 6) Check the operation of sunroof by following the table below.

Operation	Switch position
(1) Lid assembly - sunroof closes completely.	Close
(2) Lid assembly - sunroof opens 507 mm (19.96 in) away from completely closed position.	Open
(3) Lid assembly - sunroof opens completely.	Open
(4) Lid assembly - sunroof closes completely.	Close

## Sunroof Motor

SUNROOF/T-TOP/CONVERTIBLE TOP (SUNROOF)

---

### **C: INSPECTION**

Check the auto-reverse mechanism.

#### **CAUTION:**

**Do not place objects in the way to check the auto-reverse mechanism.**

- 1) Open the lid assembly - sunroof.
- 2) Forcefully push the lid assembly - sunroof in the opening direction during auto-closing, and check if the window auto-reverse mechanism operates properly.

#### **NOTE:**

If the auto function is cancelled, perform the initialize operation. <Ref. to SR-6, INITIALIZE OPERATION, OPERATION, Sunroof Control System.>