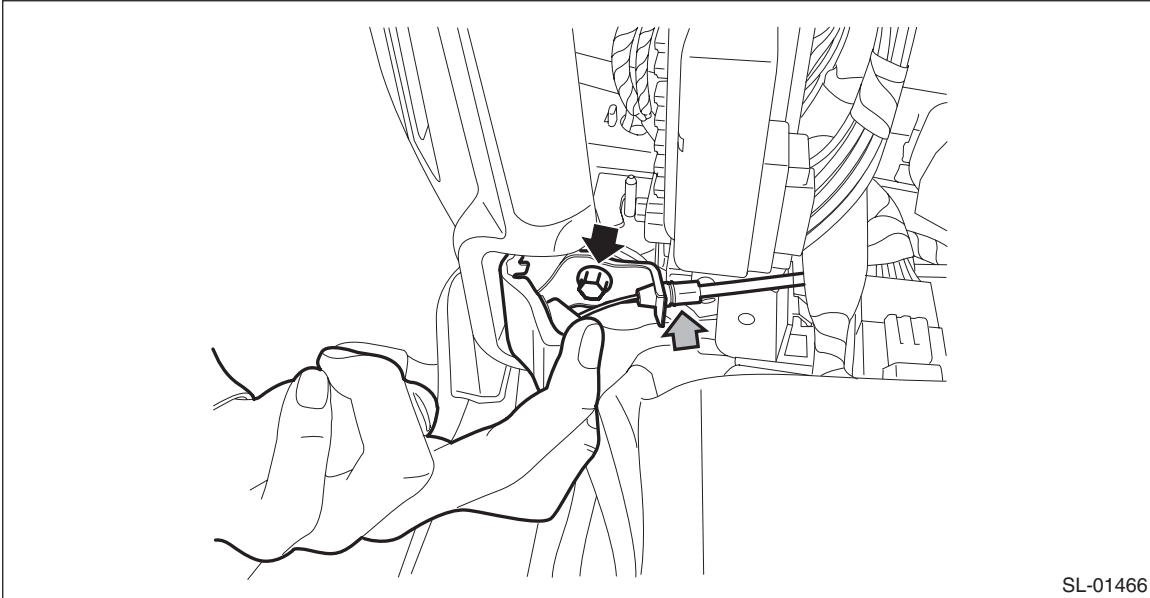


17.Remote Openers

A: REMOVAL

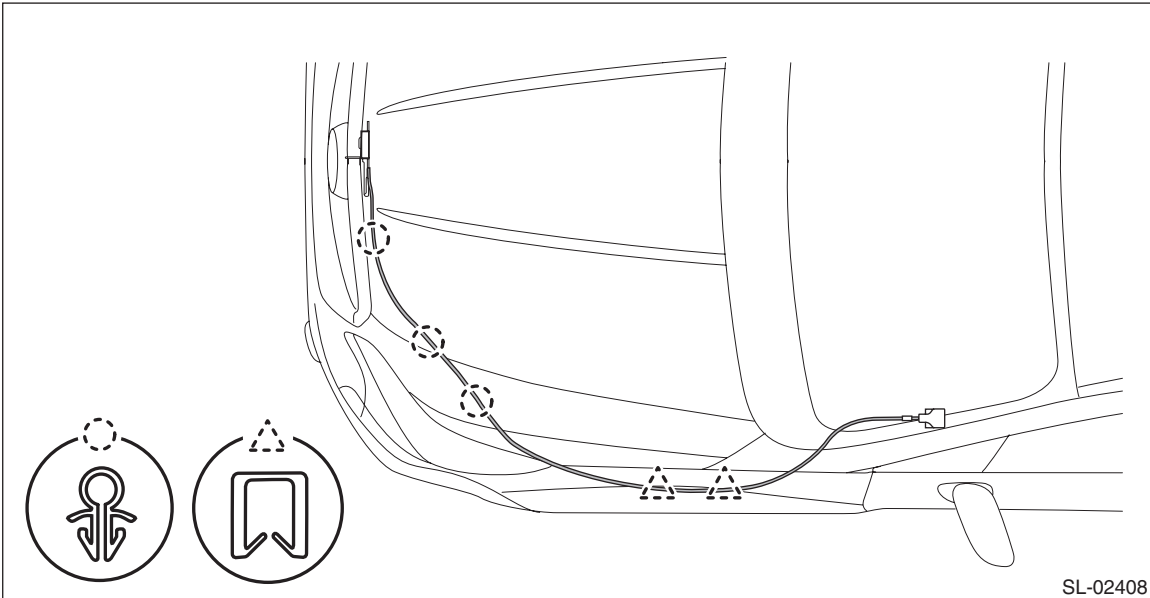
1. FRONT HOOD OPENER

- 1) Remove the opener handle.
 - (1) Remove the cable.
 - (2) Remove the bolt, and remove the opener handle.



- 2) Remove the following parts and remove the cable clip and cable.

- Lock assembly - front hood: <Ref. to SL-52, REMOVAL, Front Hood Lock Assembly.>
- Cover assembly - instrument panel LWR driver: <Ref. to EI-59, REMOVAL, Instrument Panel Lower Cover.>

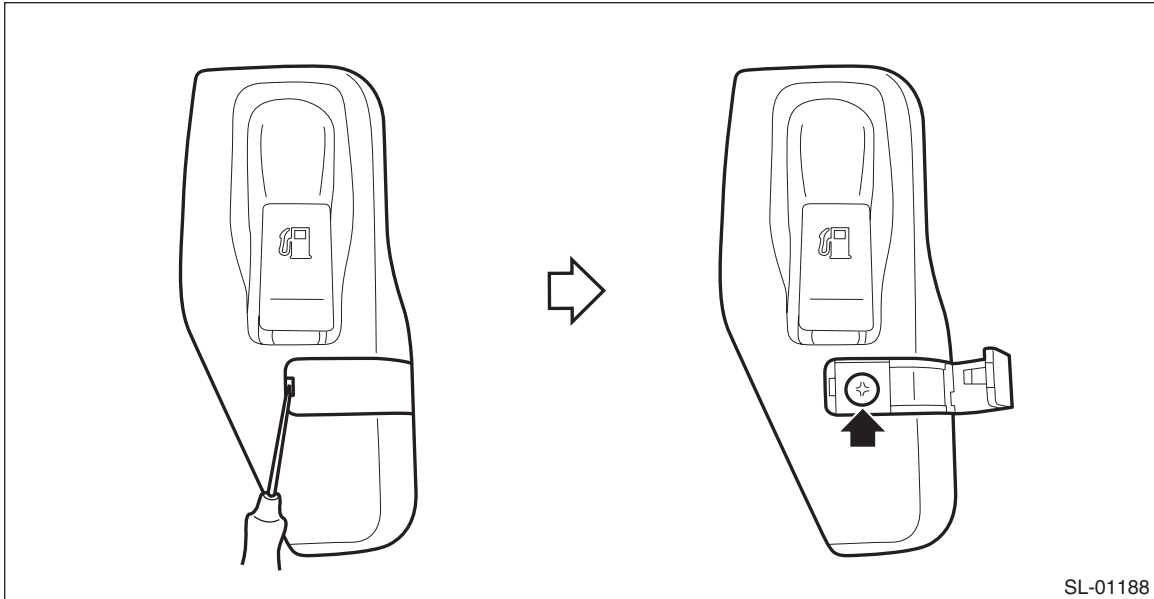


Remote Openers

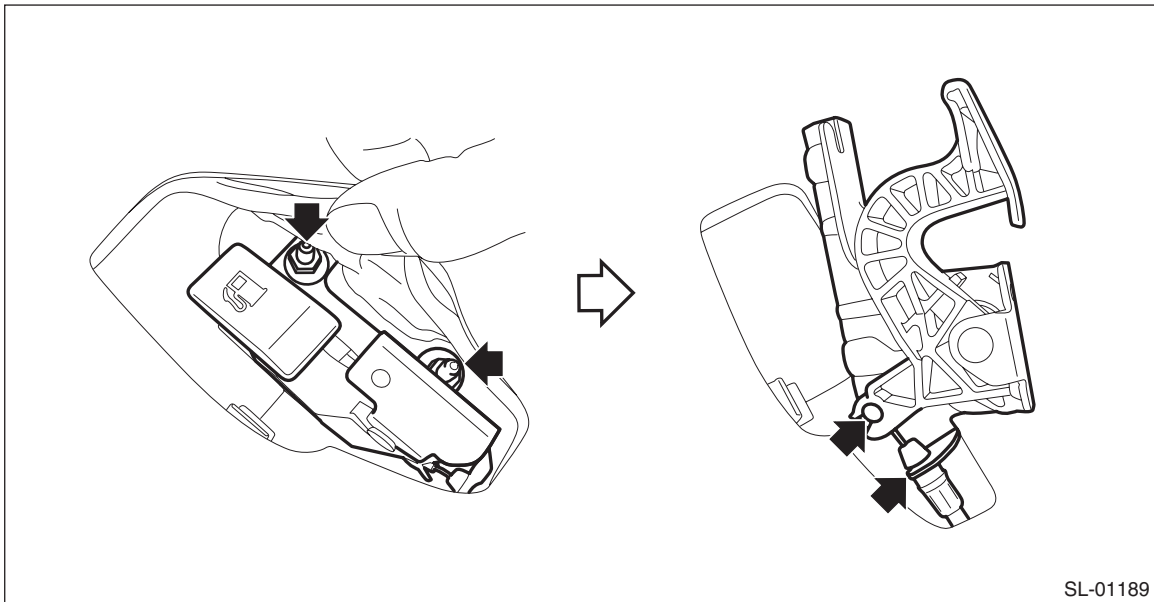
SECURITY AND LOCKS

2. FUEL FLAP OPENER

- 1) Remove the cover - handle.
 - (1) Open the cover by using a flat tip screwdriver.
 - (2) Remove the screws and detach the cover - handle.

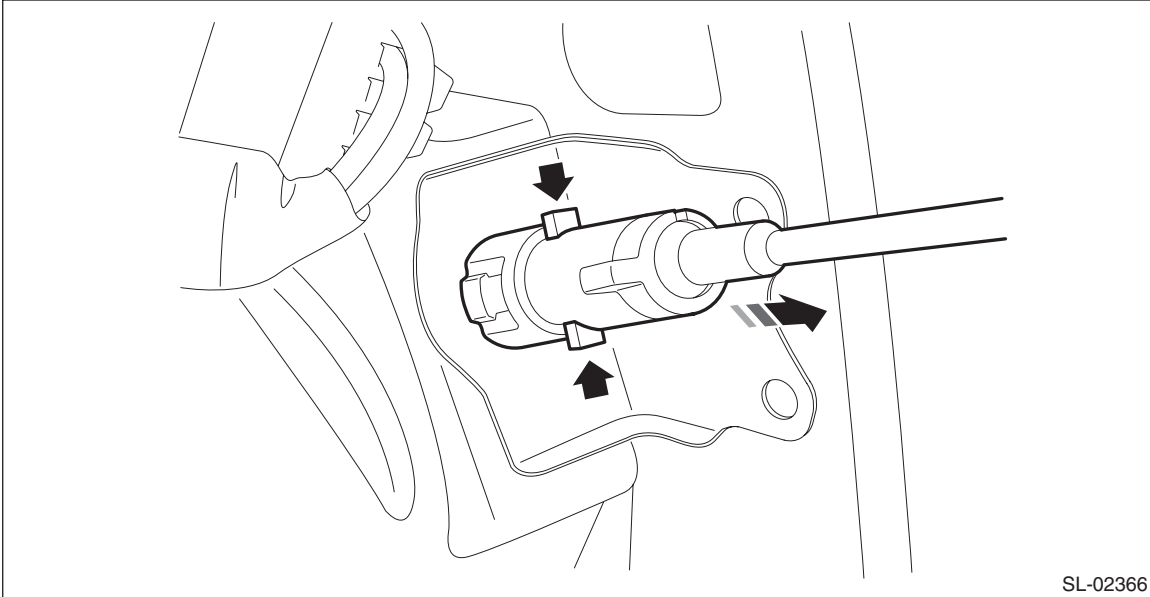


- 2) Remove the pull handle - opener.
 - (1) Remove the nut.
 - (2) Remove the cable from pull handle - opener.

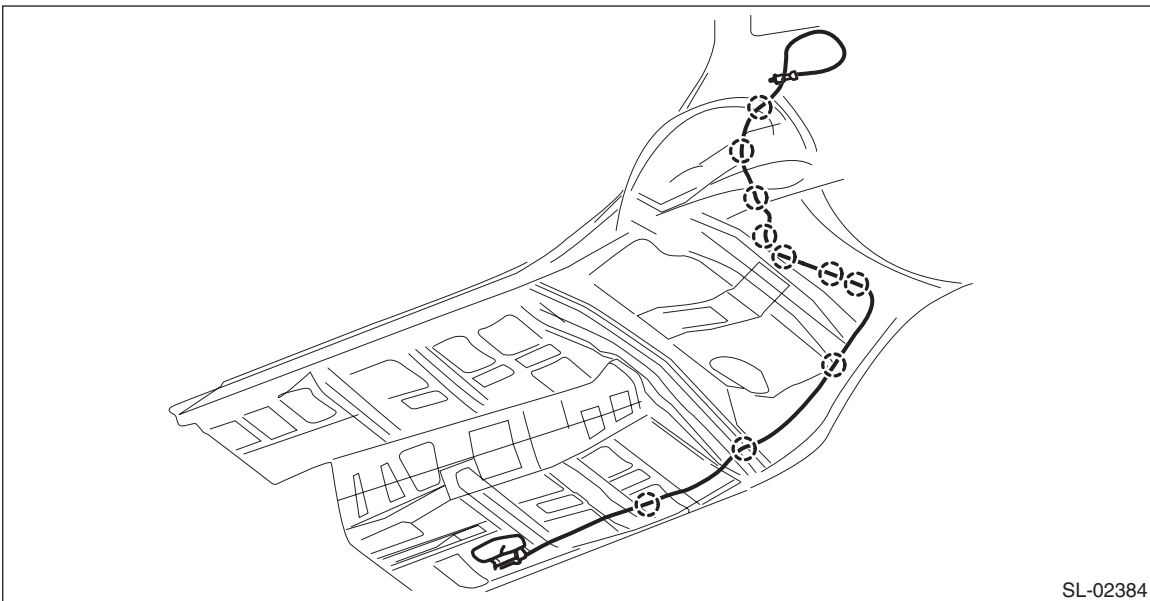


- 3) Remove the trim panel - rear apron RH. <Ref. to EI-102, REMOVAL, Rear Quarter Trim.>

- 4) Remove the fuel lock inside the quarter panel.
 - (1) Press the claws of the fuel lock.
 - (2) While keeping the condition in step (1), pull the fuel lock to the rearward of the vehicle.



- 5) Remove the lower inner trim. <Ref. to EI-92, REMOVAL, Lower Inner Trim.>
- 6) Remove the cable clip, and remove the cable.



B: INSTALLATION

- 1) Before installation, check the following items.
 - Cable is free from deformation such as fray.
- 2) Install each part in the reverse order of removal.

Tightening torque:

Front hood lock: <Ref. to SL-4, FRONT HOOD LOCK, COMPONENT, General Description.>

Remote opener: <Ref. to SL-4, FUEL FLAP OPENER, COMPONENT, General Description.>

C: INSPECTION

Check if the front hood and fuel flap operate normally.