

8. Outer Mirror Assembly

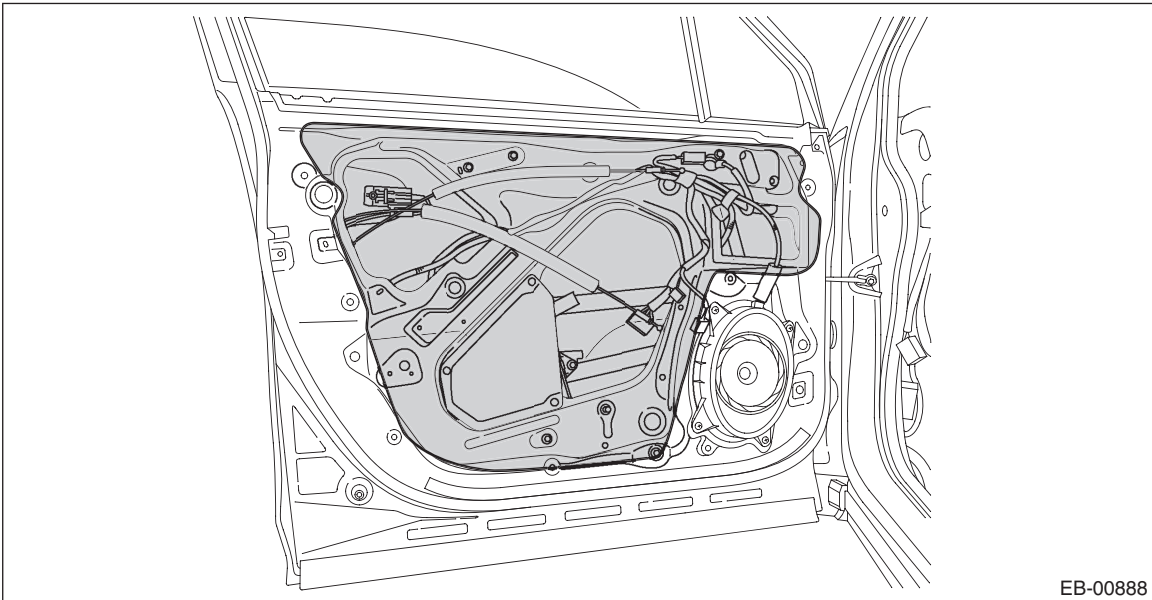
A: REMOVAL

- 1) Remove the trim panel - front door. <Ref. to EI-55, FRONT DOOR, REMOVAL, Door Trim.>
- 2) Turn over the sealing cover - front door.

CAUTION:

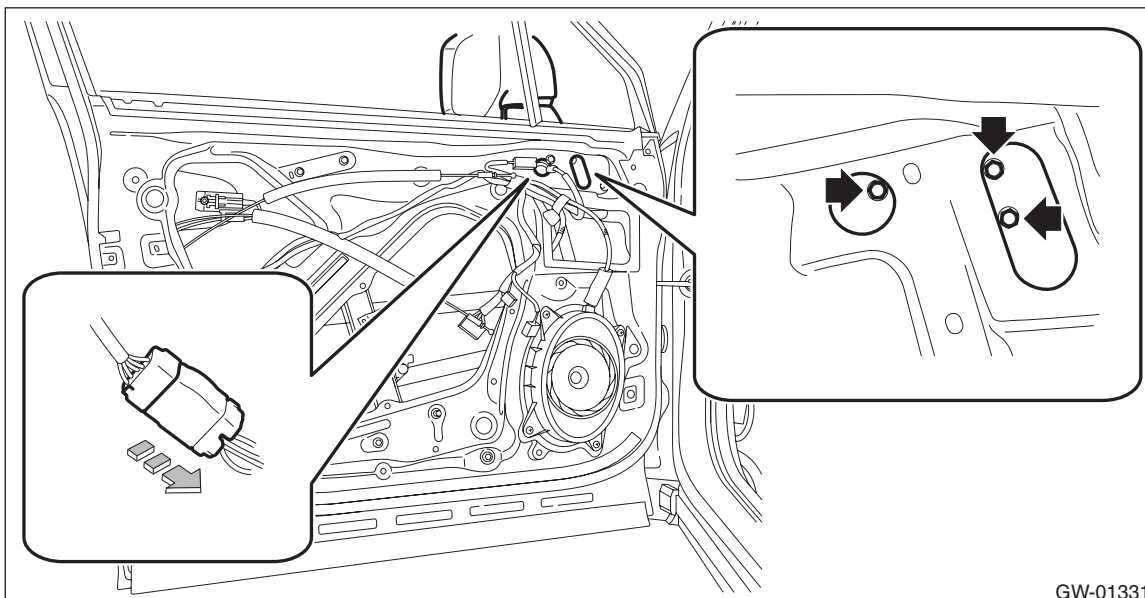
- Carefully remove the butyl tape. Excessive force will easily break the sealing cover - front door.
- If the sealing cover - front door gets broken, replace it with a new part.
- Be careful not to allow the butyl tape to contact any trims and seats because the butyl tape, which has a strong adhesive force, is difficult to remove once it adhered.

- (1) Disconnect each connector.
- (2) Carefully remove the butyl tape and turn over the sealing cover - front door within the area where the operation can be performed.



EB-00888

- 3) Remove the outer mirror assembly.
 - (1) Disconnect the connector.
 - (2) Remove the bolts to remove outer mirror assembly.



GW-01331

Outer Mirror Assembly

GLASS/WINDOWS/MIRRORS

B: INSTALLATION

Install each part in the reverse order of removal.

Tightening torque:

Outer mirror assembly: 7.5 N·m (0.76 kgf-m, 5.5 ft-lb)

C: DISASSEMBLY

CAUTION:

- When removing the mirror - repair, be careful not to damage the back surface of mirror - repair with a flat tip screwdriver.

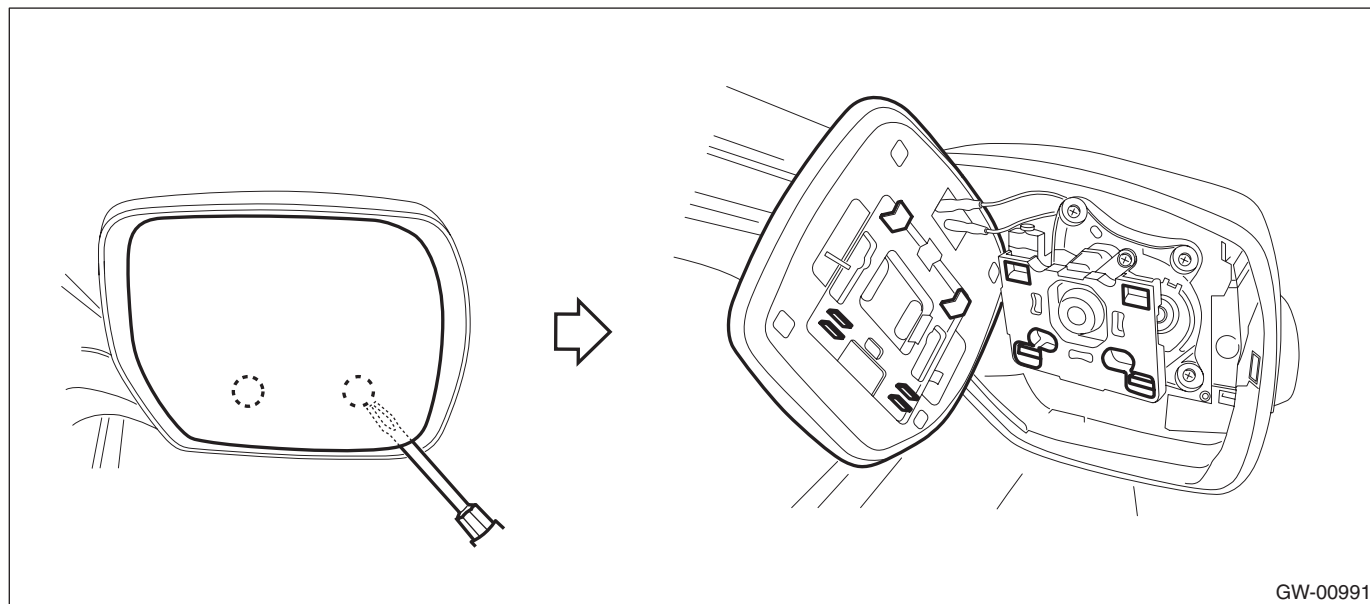
- When installing the mirror - repair, insert the connector and clip securely.

1) Operate the remote control mirror switch to face the mirror - repair upward.

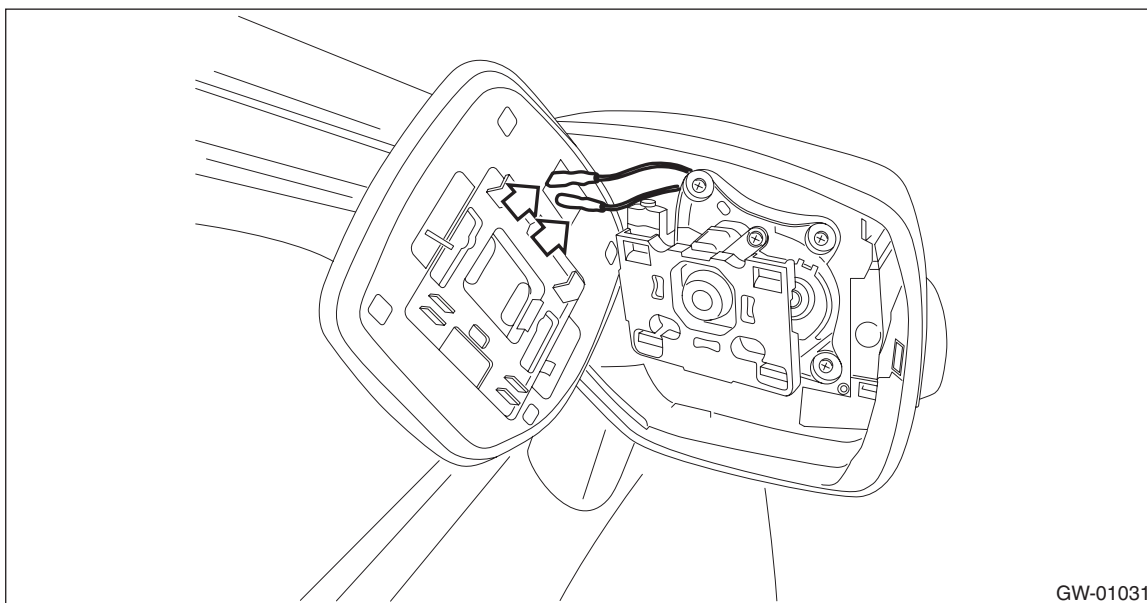
2) Disconnect the ground cable from battery.

3) Remove the mirror - repair.

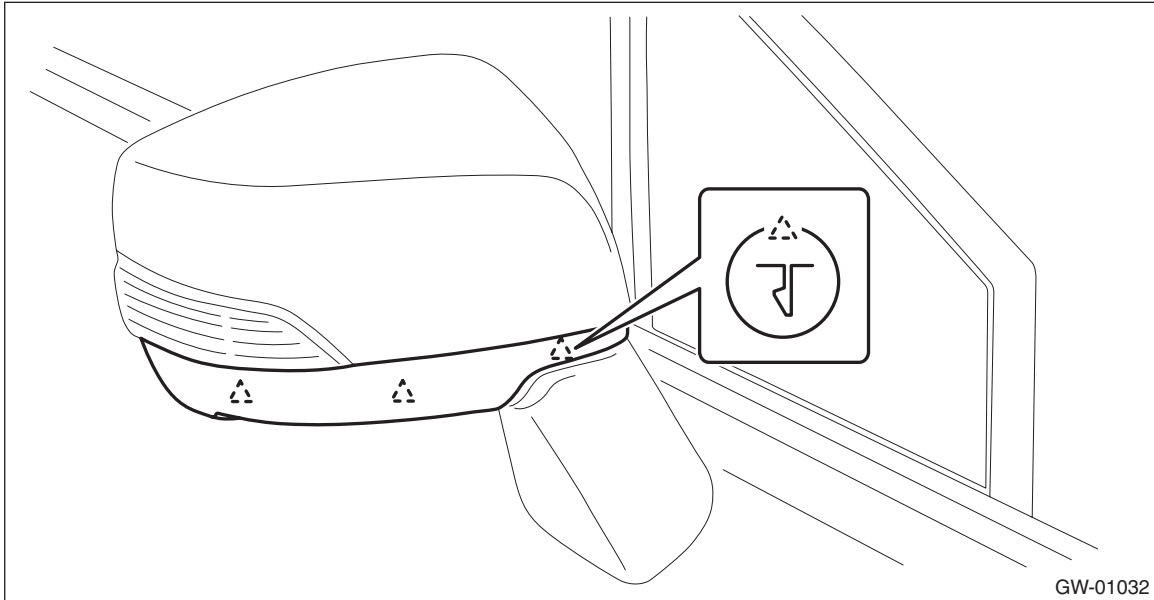
(1) Using a flat tip screwdriver, release the clip, and slide the mirror - repair downward to remove.



(2) Disconnect the mirror heater connector. (Model with mirror heater)



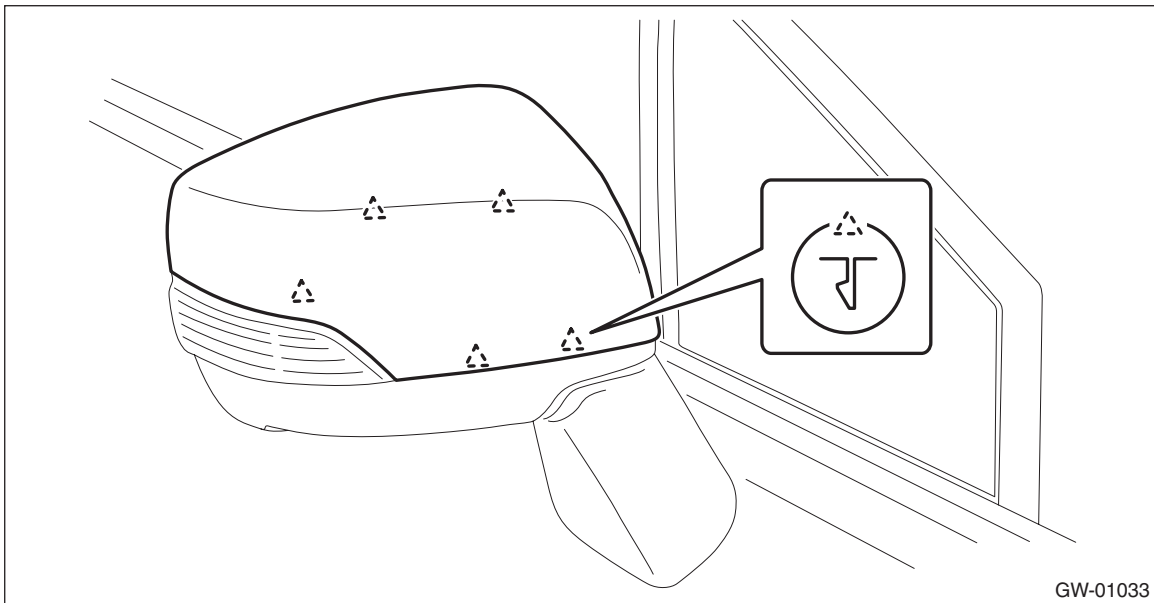
- 4) Release the claws, and then remove the cover - cap outer mirror lower.



- 5) Release the claws, and then remove the cover - cap outer mirror.

CAUTION:

Be careful not to apply excessive force when removing the cover - cap outer mirror, as the lower hooks may become damaged.

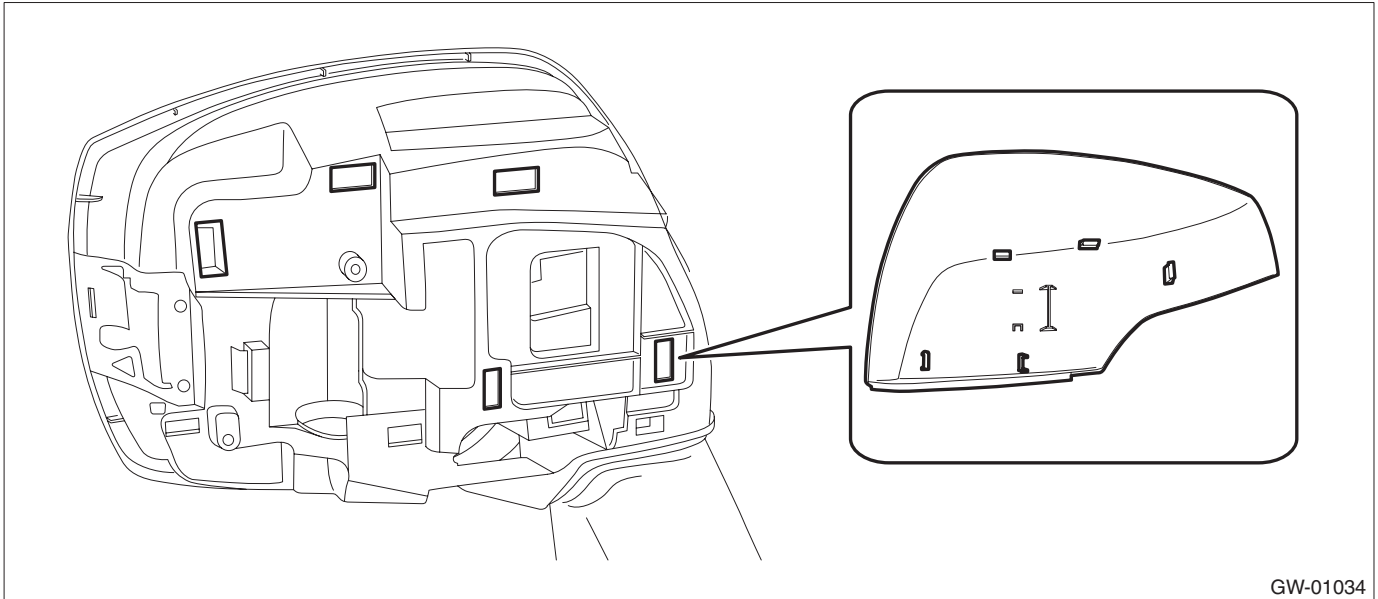


Outer Mirror Assembly

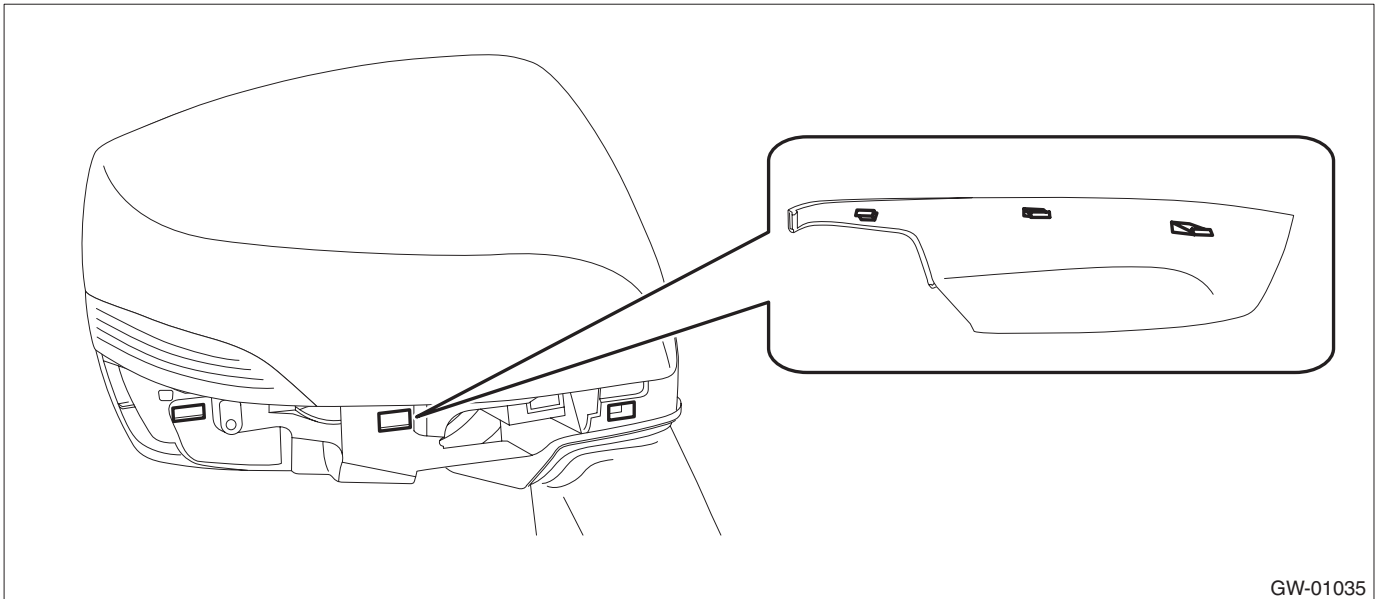
GLASS/WINDOWS/MIRRORS

D: ASSEMBLY

1) Engage the claws into the hole and install the cover - cap outer mirror.



2) Engage the claws into the hole and install the cover - cap outer mirror lower.



3) Check that all the claws are securely engaged.

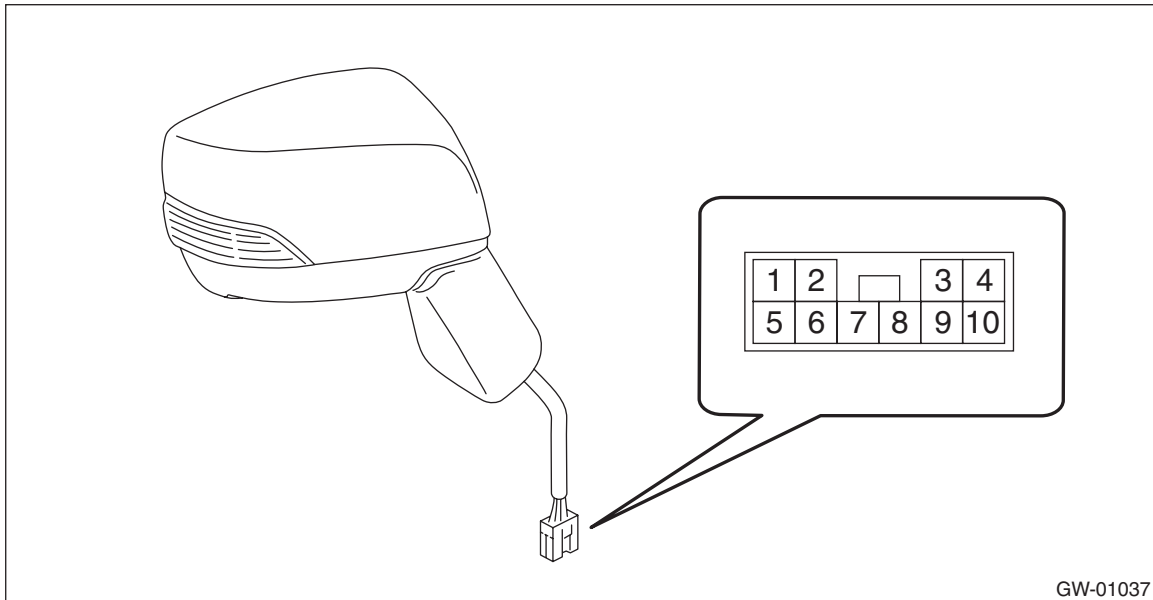
4) Install the mirror - repair in the reverse order of removal.

CAUTION:

Be sure to insert the connector and clips securely.

E: INSPECTION

- 1) Disconnect the outer mirror connector.
- 2) Apply battery voltage between the outer mirror connector terminals and check the mirror operation.



Terminal No.	Inspection conditions	Switch position
—	—	OFF
3 (+) — 8 (—)	Apply battery voltage between terminals.	UP
8 (+) — 3 (—)	Apply battery voltage between terminals.	DOWN
7 (+) — 3 (—)	Apply battery voltage between terminals.	LEFT
3 (+) — 7 (—)	Apply battery voltage between terminals.	RIGHT

- 3) If it does not operate normally, replace the outer mirror assembly.