

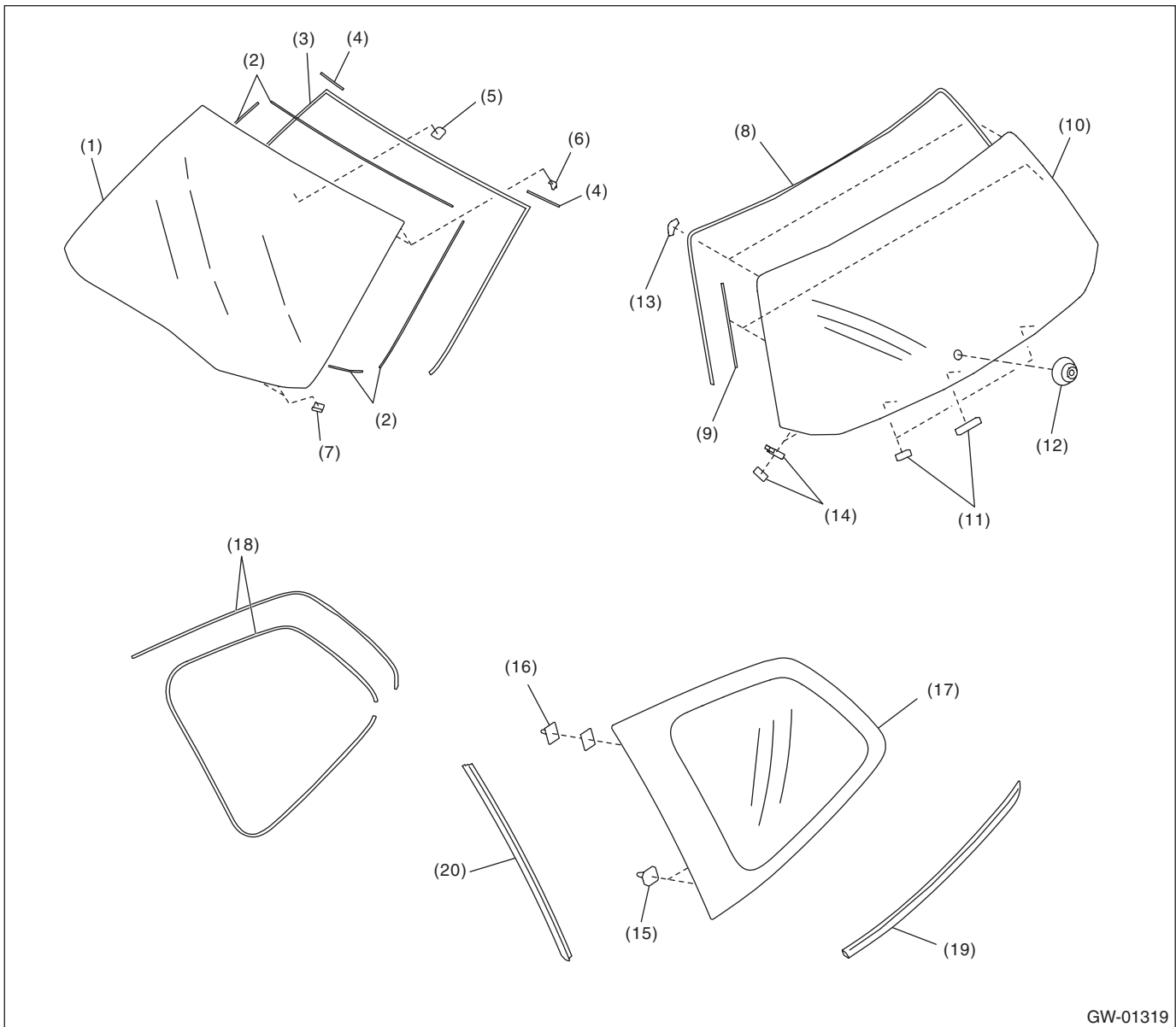
General Description

GLASS/WINDOWS/MIRRORS

1. General Description

A: COMPONENT

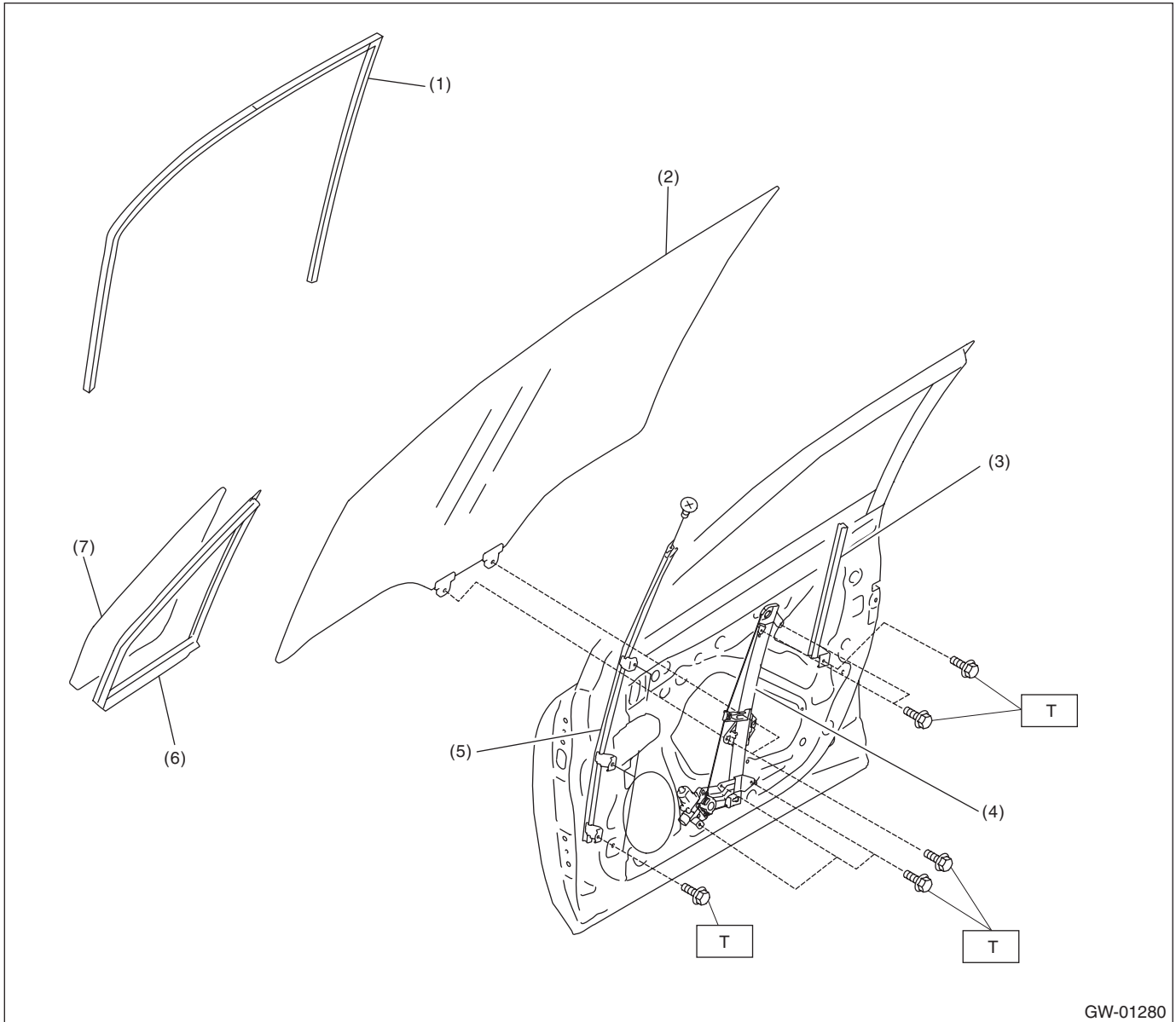
1. FIXED GLASS



GW-01319

- | | | |
|---------------------------------|-------------------------------|----------------------------------|
| (1) Glass - front window | (8) Rubber - rear gate | (15) Locating pin - rear quarter |
| (2) Dam rubber - front | (9) Dam rubber - rear gate | (16) Fastener - rear quarter |
| (3) Molding - front window | (10) Glass - rear gate | (17) Glass - rear quarter |
| (4) Seal - upper | (11) Spacer - rear gate | (18) Dam rubber - rear quarter |
| (5) Base - inner mirror | (12) Cap - pivot | (19) Molding - lower |
| (6) Locating pin - front window | (13) Locating pin - rear gate | (20) Molding - rear quarter |
| (7) Seal - lower | (14) Fastener - rear gate | |

2. FRONT DOOR GLASS



GW-01280

- | | |
|------------------------------------|--|
| (1) Running channel - front door | (5) Sash COMPL - partition |
| (2) Glass ASSY - front door | (6) Weather strip - front door partition |
| (3) Sash COMPL - lower | (7) Glass - front door partition |
| (4) Regulator & motor ASSY - front | |

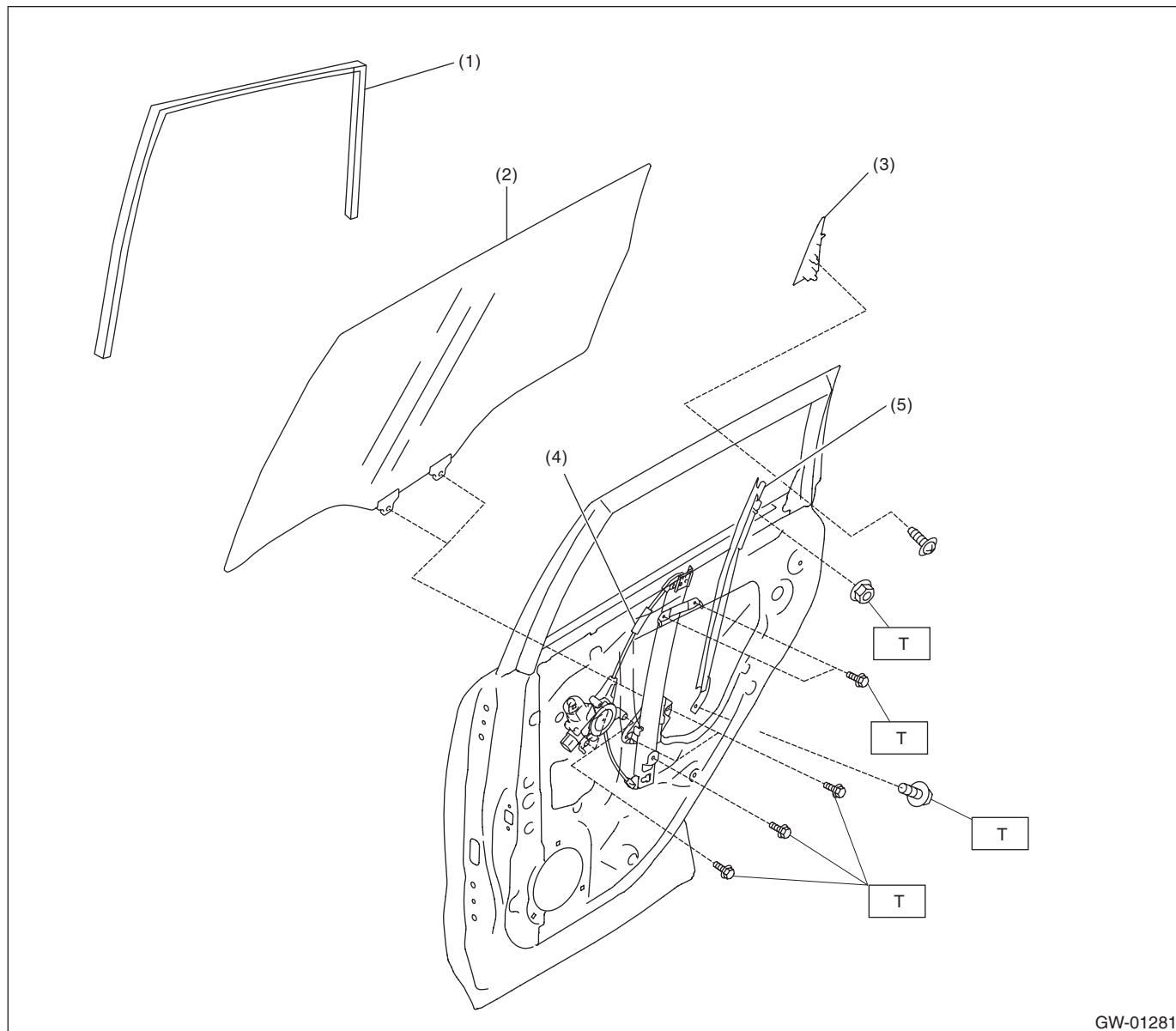
Tightening torque: N-m (kgf-m, ft-lb)

T: 7.5 (0.76, 5.5)

General Description

GLASS/WINDOWS/MIRRORS

3. REAR DOOR GLASS



GW-01281

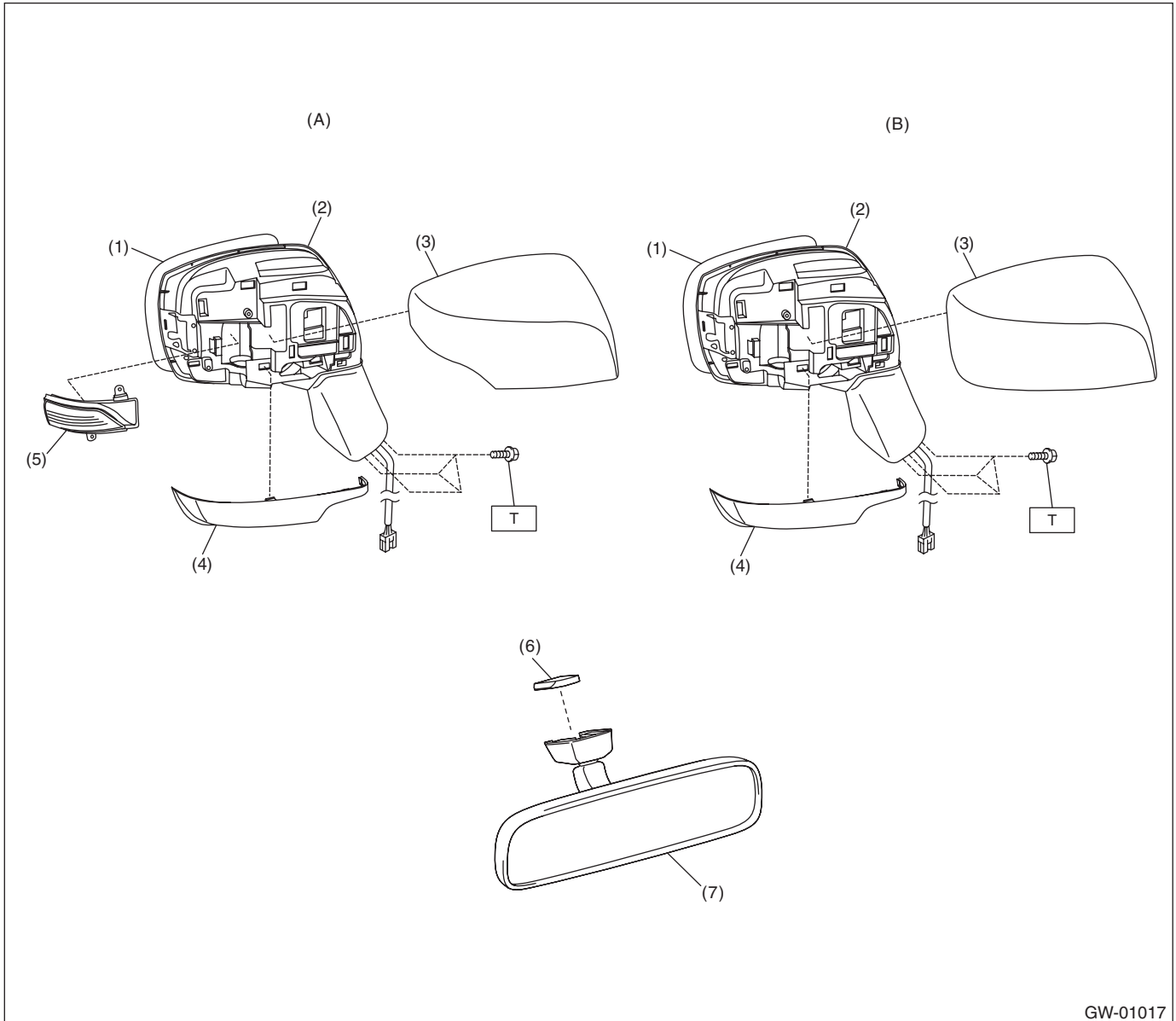
- (1) Running channel - rear door
- (2) Glass ASSY - rear door
- (3) Rear outer gusset cover

- (4) Regulator & motor ASSY - front
- (5) Sash ASSY - rear door lower

Tightening torque: N·m (kgf-m, ft-lb)

T: 7.5 (0.76, 5.5)

4. MIRROR



GW-01017

(A) Model with side turn

(B) Model without side turn

- (1) Mirror - repair
- (2) Mirror unit - door
- (3) Cover - cap outer mirror
- (4) Cover - cap outer mirror lower

- (5) Light ASSY - side turn mirror
- (6) Base - inner mirror
- (7) Mirror ASSY - inner rearview

Tightening torque: N·m (kgf-m, ft-lb)
T: 7.5 (0.76, 5.5)

General Description

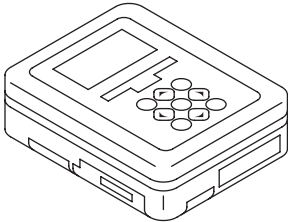
GLASS/WINDOWS/MIRRORS

B: CAUTION

- Before disassembling or reassembling parts, always disconnect the battery ground cable from battery. When replacing the audio, control module and other parts provided with memory functions, record the memory contents before disconnecting the battery ground cable. Otherwise, the memory is cleared.
- Avoid impact and damage to the glass.
- Reassemble the parts in the reverse order of disassembly procedure unless otherwise indicated.
- Connect the connectors securely during reassembly.
- After reassembly, make sure that the each component operates normally.

C: PREPARATION TOOL

1. SPECIAL TOOL

ILLUSTRATION	TOOL NUMBER	DESCRIPTION	REMARKS
 ST1B022XU0	1B022XU0	SUBARU SELECT MONITOR III KIT	Used for setting of each function and troubleshooting for electrical system.

2. GENERAL TOOL

TOOL NAME	REMARKS
Circuit tester	Used for measuring resistance and voltage.
Piano wire	Used for removing the window glass.
Cutter knife	Used for removing the window glass.
Windshield glass knife	Used for removing the window glass.