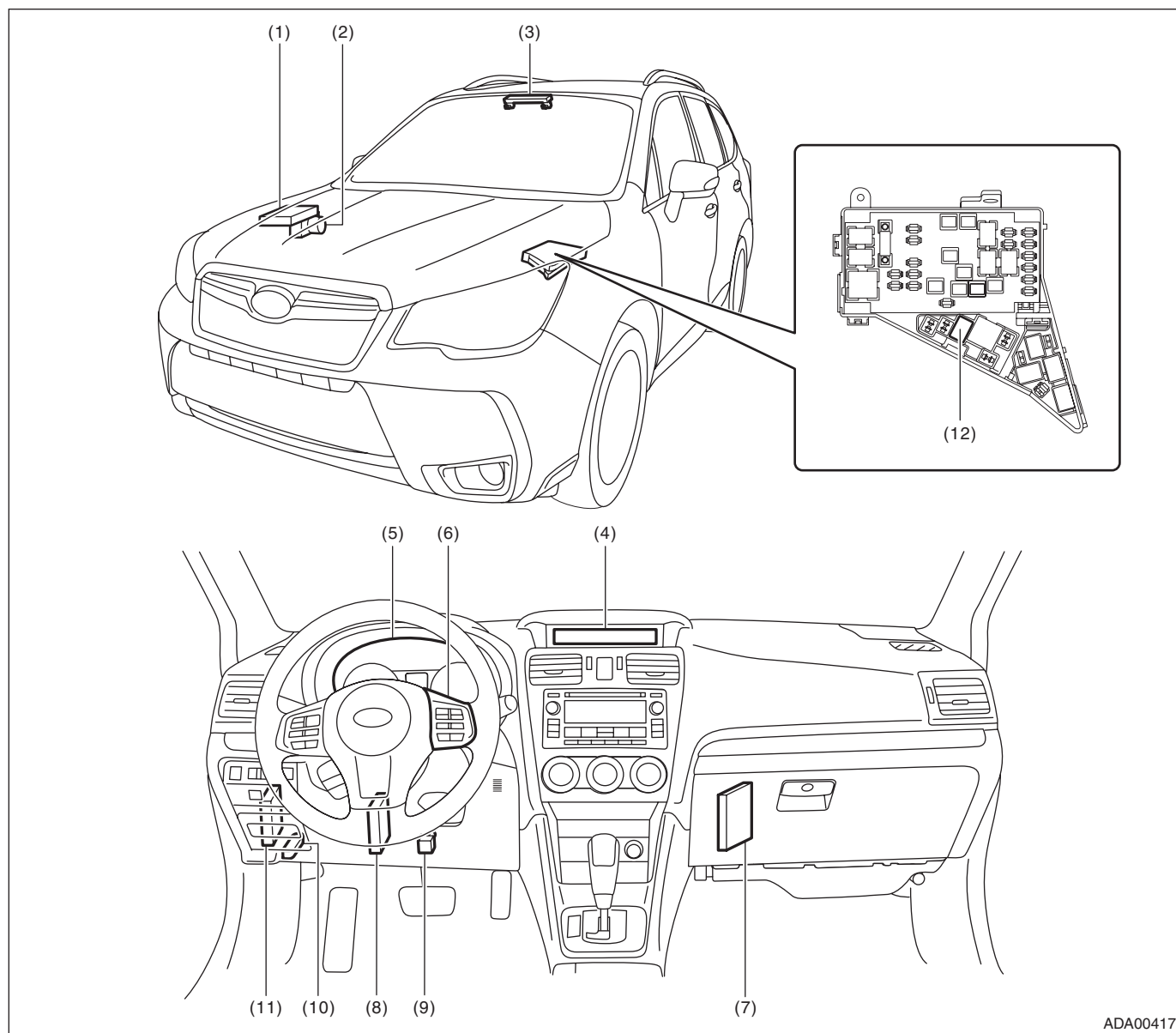


## 1. General Description

### A: COMPONENT

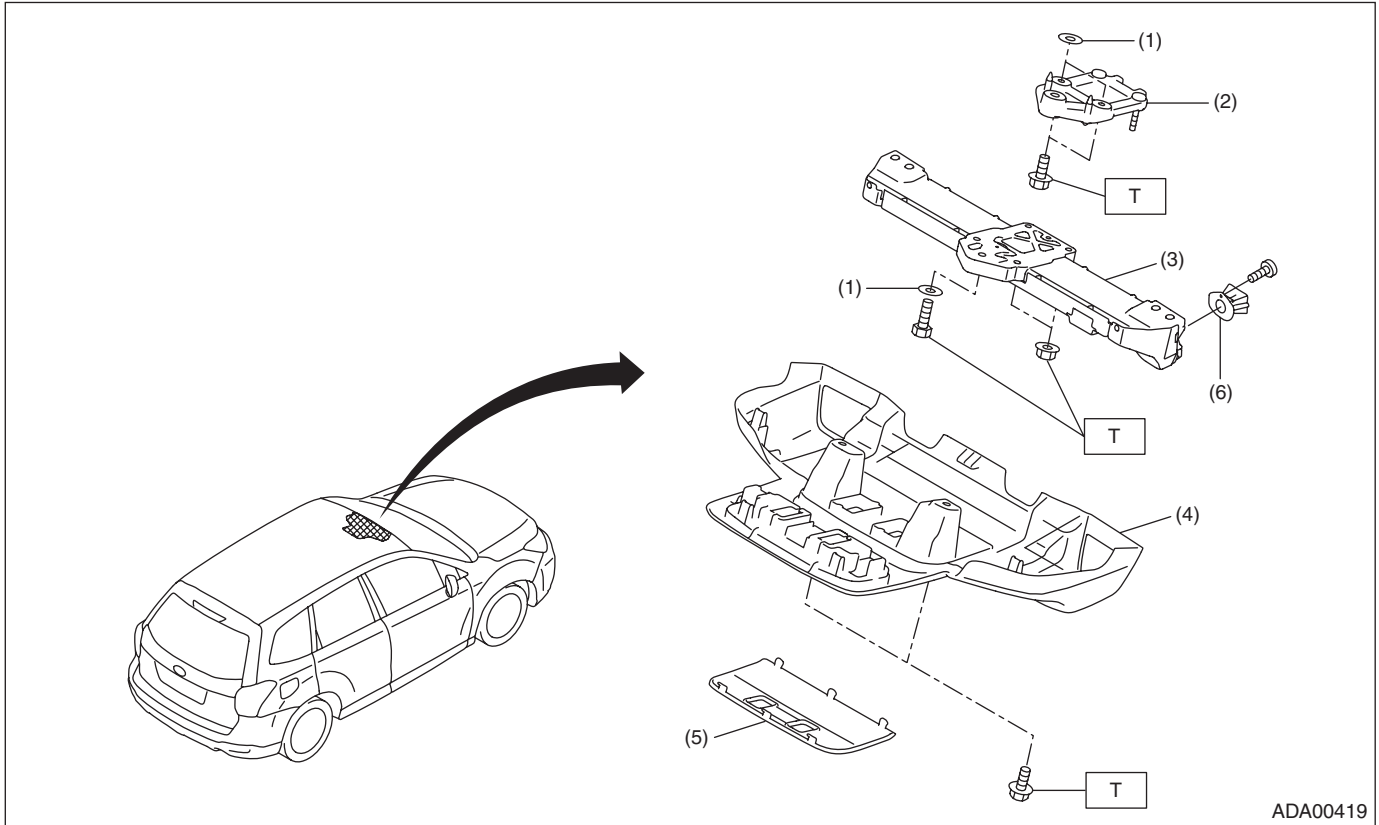
#### 1. EyeSight SYSTEM



ADA00417

- |  |  |                                 |
|--|--|---------------------------------|
| (1) Engine control module (ECM)<br>(turbo model) | (5) Combination meter                                | (9) Stop light and brake switch |
| (2) VDC control module (VDCCM)                   | (6) Cruise control command switch                    | (10) Data link connector        |
| (3) Stereo camera                                | (7) Engine control module (ECM)<br>(non-turbo model) | (11) Body integrated unit       |
| (4) MFD (multi-function display)                 | (8) Transmission control module<br>(TCM)             | (12) Brake light relay          |

## 2. STEREO CAMERA



- |                   |                              |
|-------------------|------------------------------|
| (1) Washer        | (4) Stereo camera cover ASSY |
| (2) Camera plate  | (5) Cap                      |
| (3) Stereo camera | (6) Lens hood (lens filter)  |

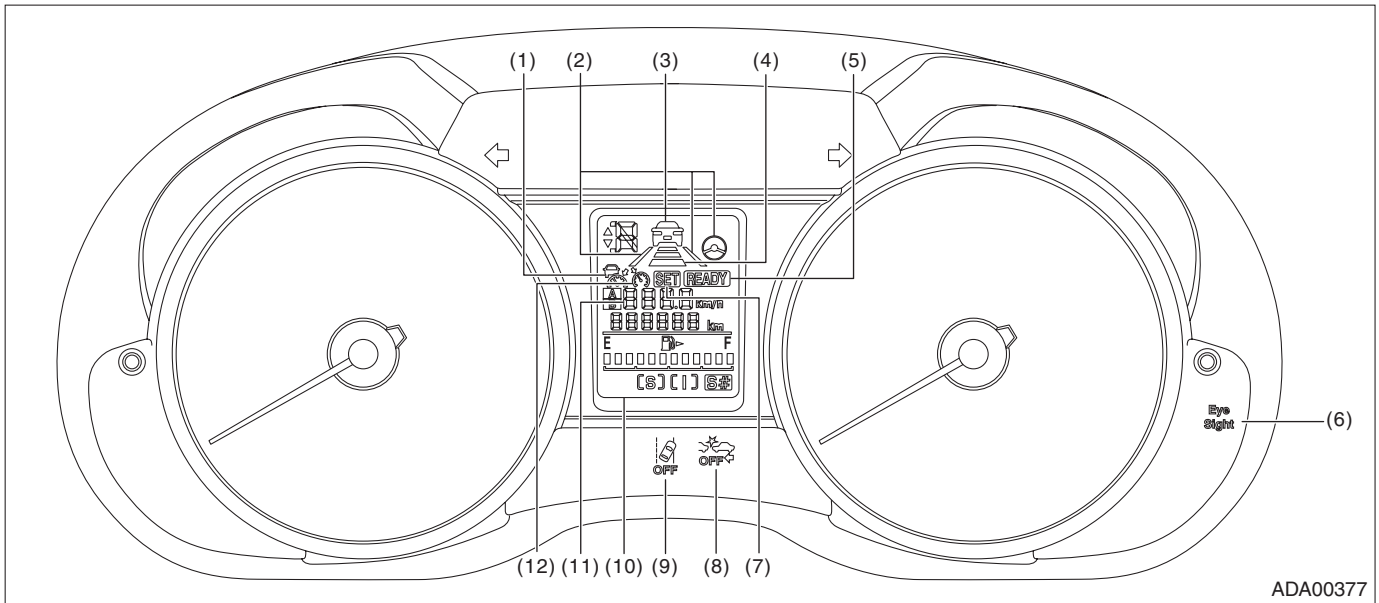
**Tightening torque: N·m (kgf-m, ft-lb)**  
**T: 5.5±1.0 (0.56±0.10, 4.1±0.7)**

# General Description

EyeSight

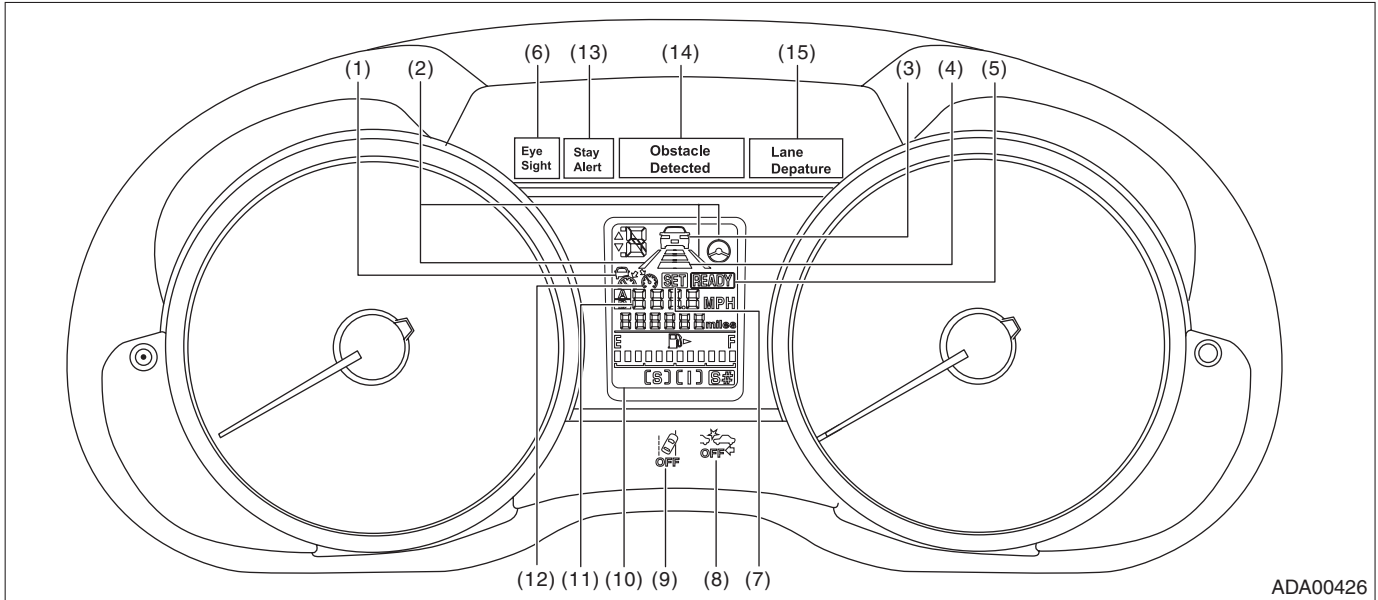
## 3. COMBINATION METER

- C0 model



- |   |   |  |
|---|---|--|
| (1) Adaptive cruise display                 | (5) READY indicator                         | (9) Lane departure warning OFF indicator light |
| (2) Lane indicator/Steering wheel indicator | (6) EyeSight warning light                  | (10) Multi-information display                 |
| (3) Preceding vehicle indicator             | (7) SET indicator                           | (11) Set vehicle speed display                 |
| (4) Following distance setting indicator    | (8) Pre-collision brake OFF indicator light | (12) Constant speed cruise display             |

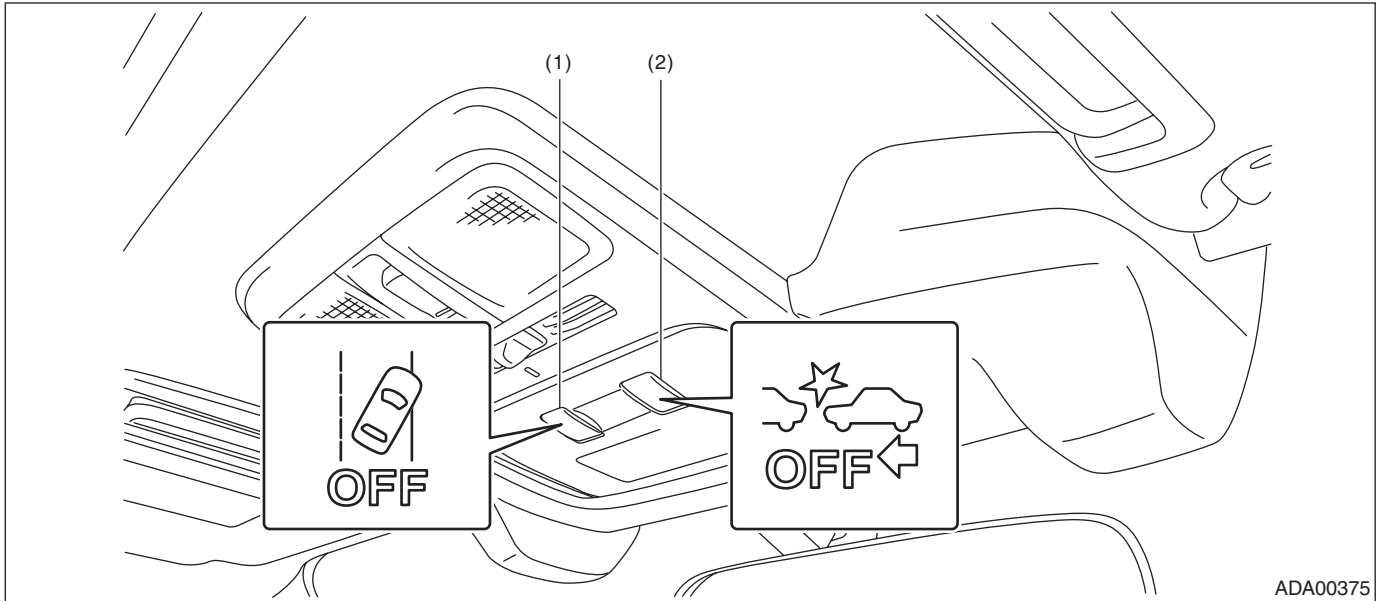
- Except for C0 model



ADA00426

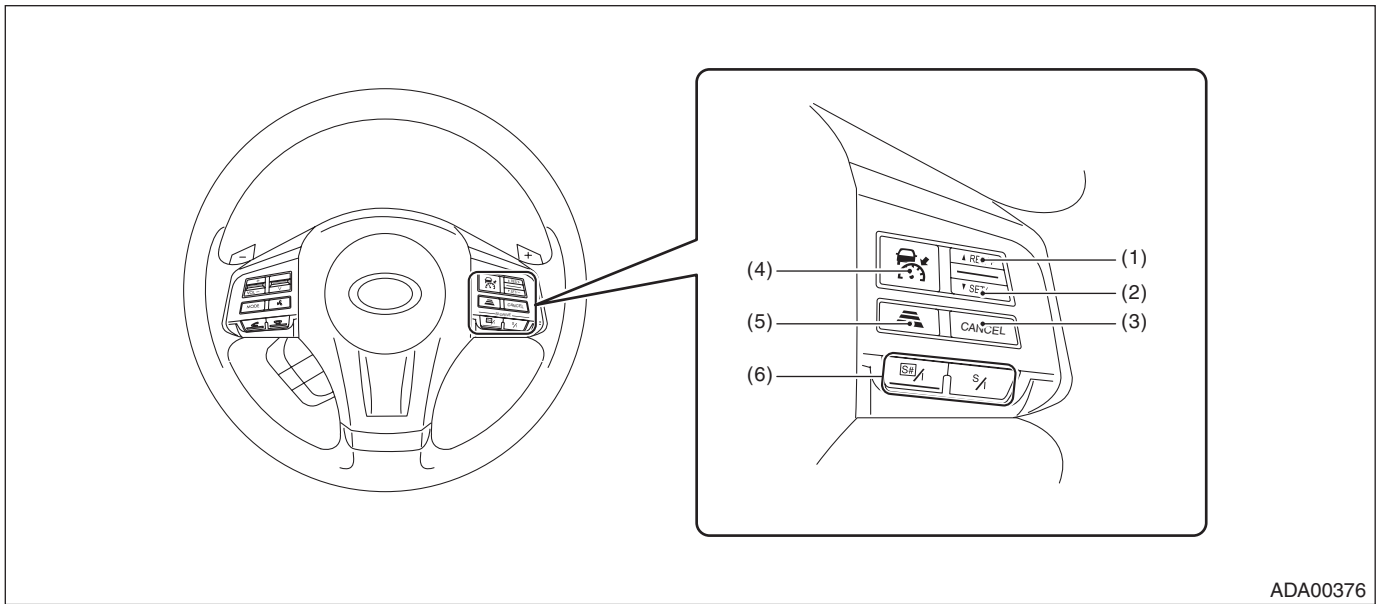
- |   |  |                                    |
|---|--|------------------------------------|
| (1) Adaptive cruise display                 | (6) EyeSight warning light                     | (11) Set vehicle speed display     |
| (2) Lane indicator/Steering wheel indicator | (7) SET indicator                              | (12) Constant speed cruise display |
| (3) Preceding vehicle indicator             | (8) Pre-collision brake OFF indicator light    | (13) "Stay Alert" indicator        |
| (4) Following distance setting indicator    | (9) Lane departure warning OFF indicator light | (14) "Obstacle Detected" indicator |
| (5) READY indicator                         | (10) Multi-information display                 | (15) "Lane Departure" indicator    |

## 4. SWITCH



(1) Lane departure warning OFF switch

(2) Pre-collision brake OFF switch



(1) RES/+ (Resume/+) switch

(3) CANCEL switch

(5) Following distance setting switch

(2) SET/- (Set/-) switch

(4) CRUISE switch

(6) SI-DRIVE switch

**B: CAUTION**

- Before disassembling or reassembling parts, always disconnect the battery ground cable from battery. When replacing the audio, control module and other parts provided with memory functions, record the memory contents before disconnecting the battery ground cable. Otherwise, the memory is cleared.
  - Reassemble the parts in the reverse order of disassembly procedure unless otherwise indicated.
  - Adjust parts to the given specifications.
  - Connect the connectors securely during reassembly.
  - After reassembly, make sure that the functional parts operate normally.
  - Yellow connectors and harnesses with yellow tapes around them are the connectors and harnesses for the airbag system. Using a tester above such circuits may cause malfunction of airbag system. Follow the cautions for the airbag system in this case. <Ref. to AB-9, CAUTION, General Description.>
  - Be careful not to damage the airbag system wiring harness when servicing electrical parts and switches.
  - If the steering wheel and steering angle sensor (steering roll connector) are removed, adjust the steering angle sensor. <Ref. to VDC-23, ADJUSTMENT, VDC Control Module and Hydraulic Control Unit (VDC-CM&H/U).>
  - If the glass is damaged inside the glass repair prohibited area, always perform the glass replacement. <Ref. to ES(diag)-8, WINDSHIELD GLASS AND DASHBOARD, INSPECTION, General Description.>
- Even if a scratch that occurs inside the prohibited area is repaired, this will affect the recognition of the stereo camera, which may cause the EyeSight function not to operate correctly.

**C: PREPARATION TOOL****1. GENERAL TOOL**

TOOL NAME	REMARKS
Circuit tester	Used for measuring resistance and voltage.
Steering wheel puller	Used for removing the steering wheel.
Protective tape (masking tape, etc.)	Used for removing and installing stereo camera cover assembly.