

## General Description

### EXTERIOR BODY PANELS

---

## 1. General Description

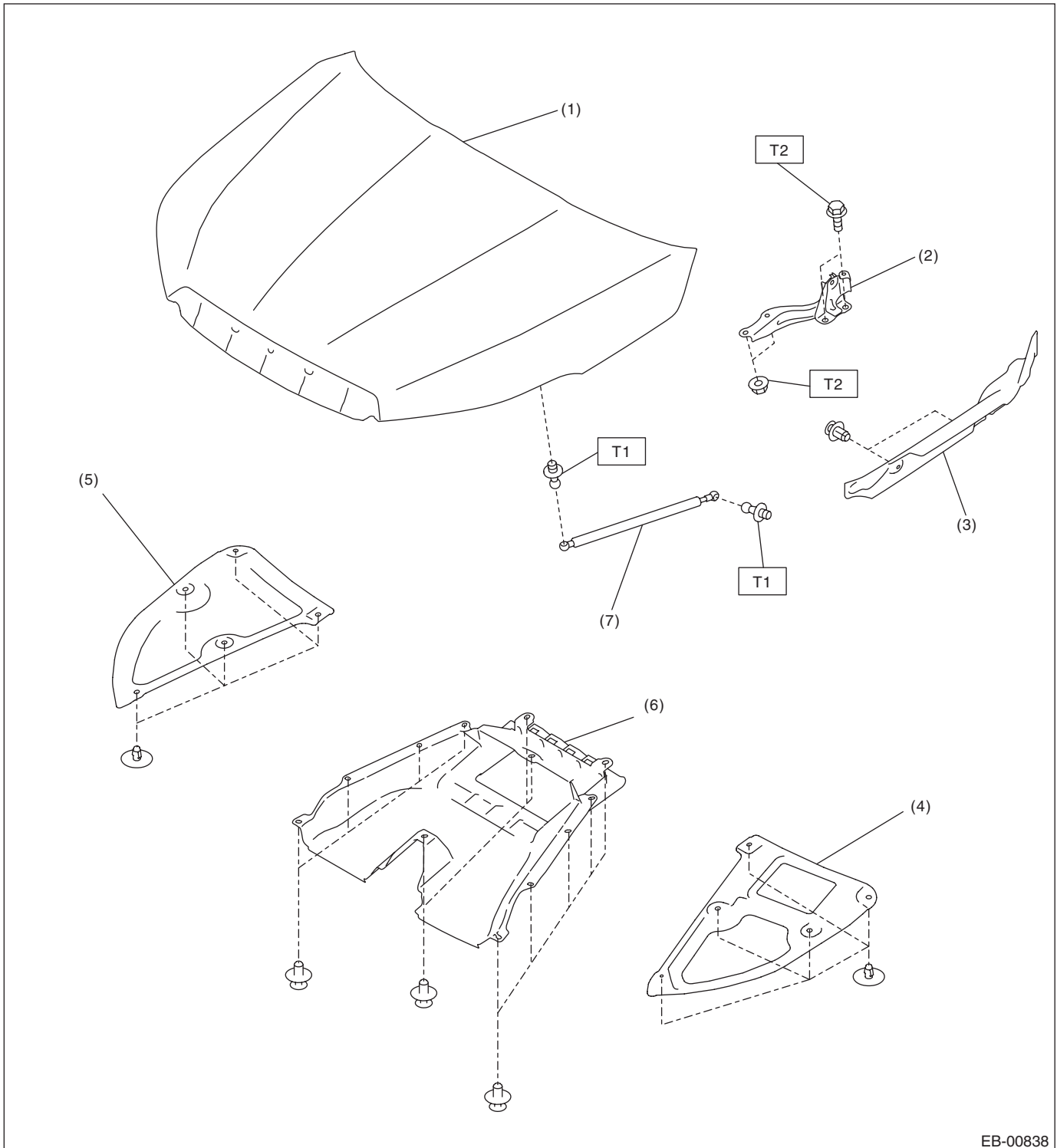
### A: SPECIFICATION

Refer to Body Repair Manual for the dimensions of the body.

## B: COMPONENT

### 1. FRONT HOOD

Turbo model



EB-00838

- |                               |                               |
|-------------------------------|-------------------------------|
| (1) Hood COMPL - front        | (5) Insulator - front hood RH |
| (2) Hinge COMPL - front hood  | (6) Duct - inner front hood   |
| (3) Cover - front fender      | (7) Stay ASSY - front hood    |
| (4) Insulator - front hood LH |                               |

**Tightening torque: N-m (kgf-m, ft-lb)**

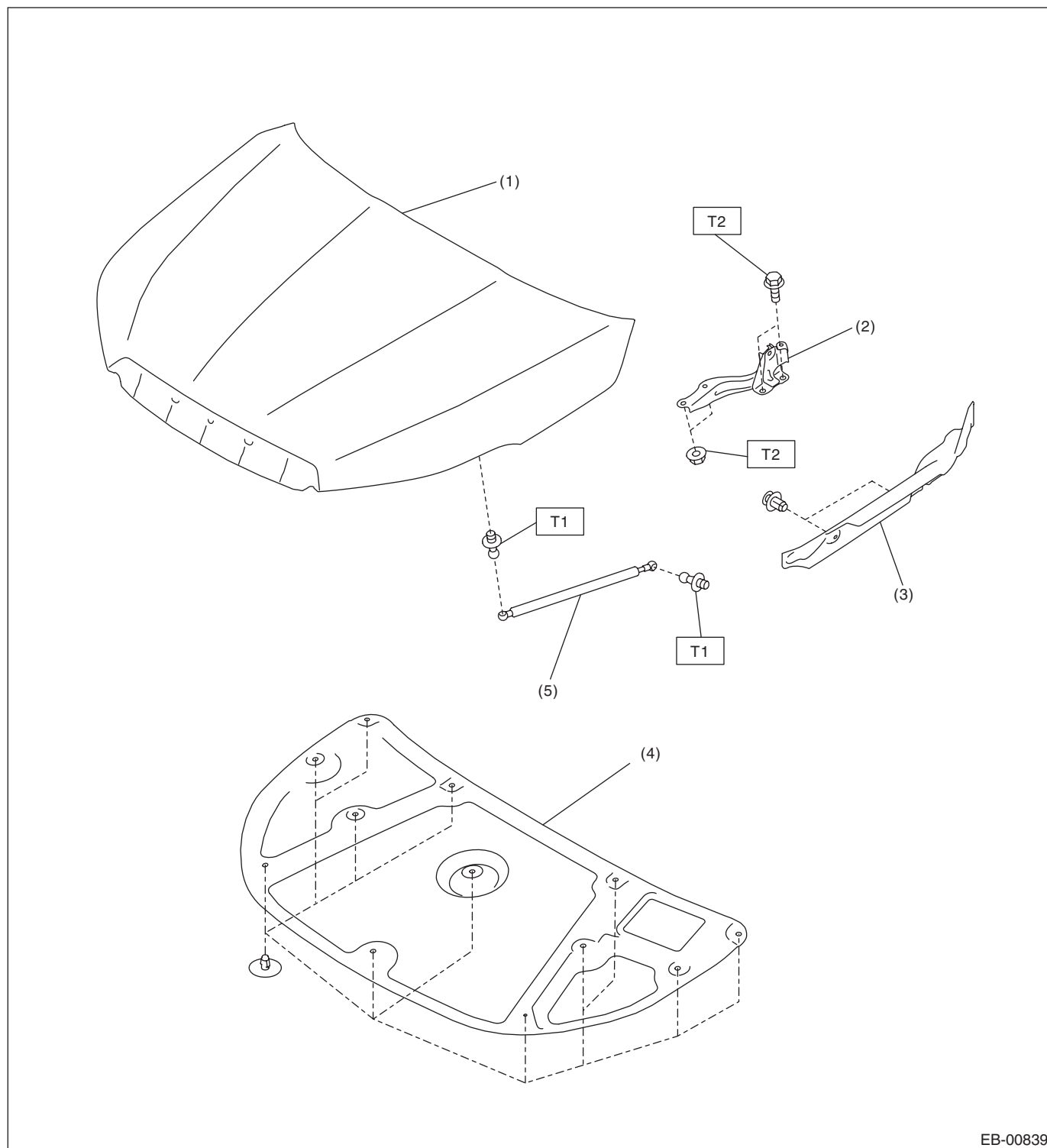
**T1: 20 (2.04, 14.8)**

**T2: 25 (2.55, 18.4)**

# General Description

## EXTERIOR BODY PANELS

### Non-turbo model



EB-00839

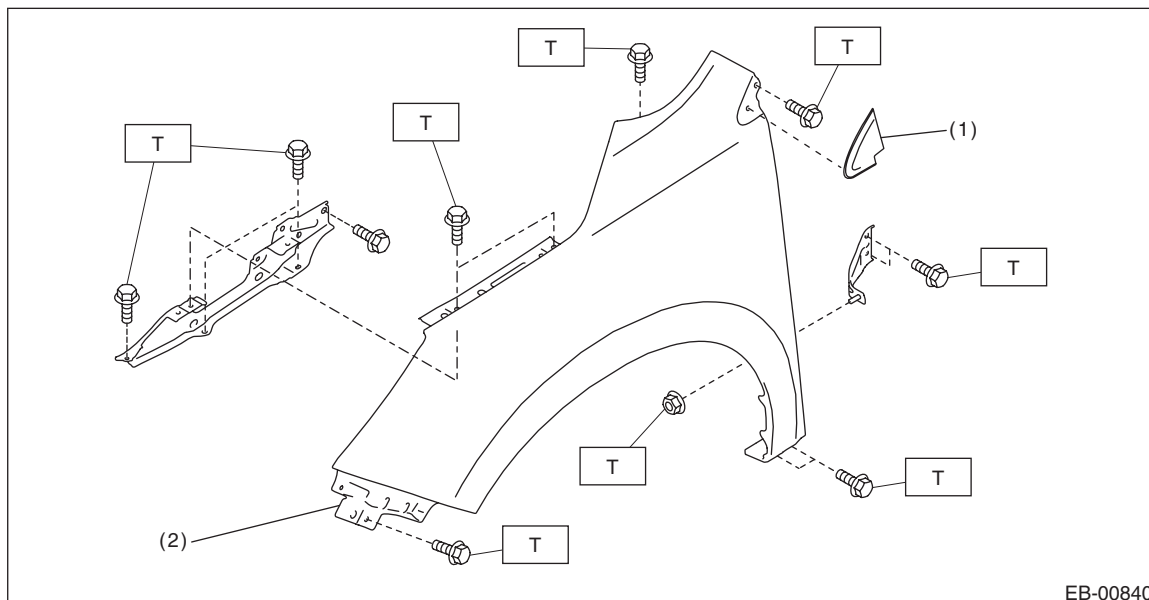
- |                              |                            |
|------------------------------|----------------------------|
| (1) Hood COMPL - front       | (4) Insulator - front hood |
| (2) Hinge COMPL - front hood | (5) Stay ASSY - front hood |
| (3) Cover - front fender     |                            |

**Tightening torque: N-m (kgf-m, ft-lb)**

**T1: 20 (2.04, 14.8)**

**T2: 25 (2.55, 18.4)**

## 2. FRONT FENDER



(1) Cover - front pillar ASSY

(2) Fender COMPL - front

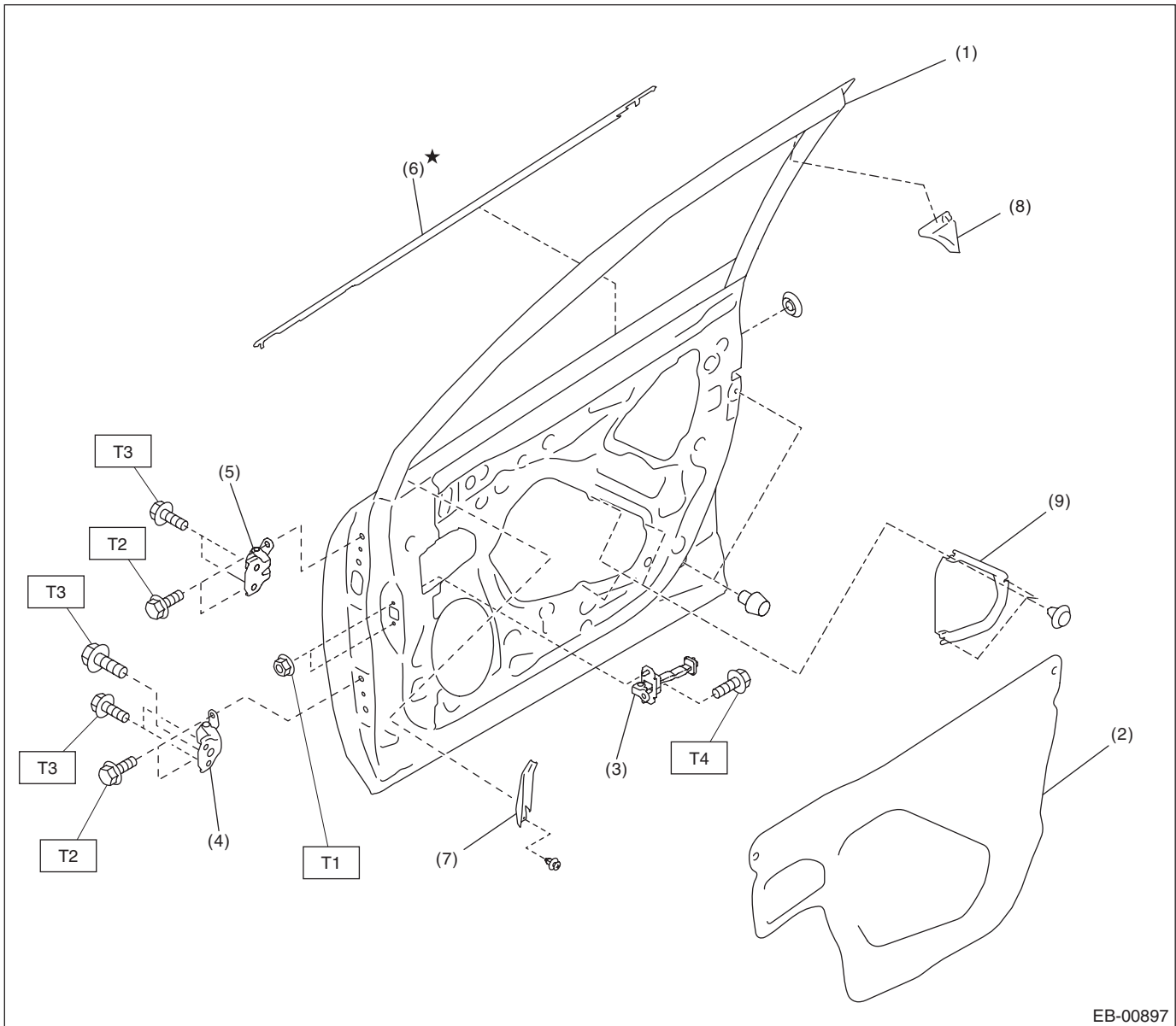
**Tightening torque: N·m (kgf-m, ft-lb)**

**T: 7.5 (0.76, 5.5)**

# General Description

## EXTERIOR BODY PANELS

### 3. FRONT DOOR



EB-00897

- |                                |                                       |
|--------------------------------|---------------------------------------|
| (1) Panel ASSY - front door    | (6) Weather strip outer - front door  |
| (2) Sealing cover - front door | (7) Cover sash - inner front          |
| (3) Checker ASSY - front door  | (8) Cover B pillar - inner front door |
| (4) Lower hinge - front door   | (9) Front door inner pad              |
| (5) Upper hinge - front door   |                                       |

**Tightening torque: N·m (kgf·m, ft·lb)**

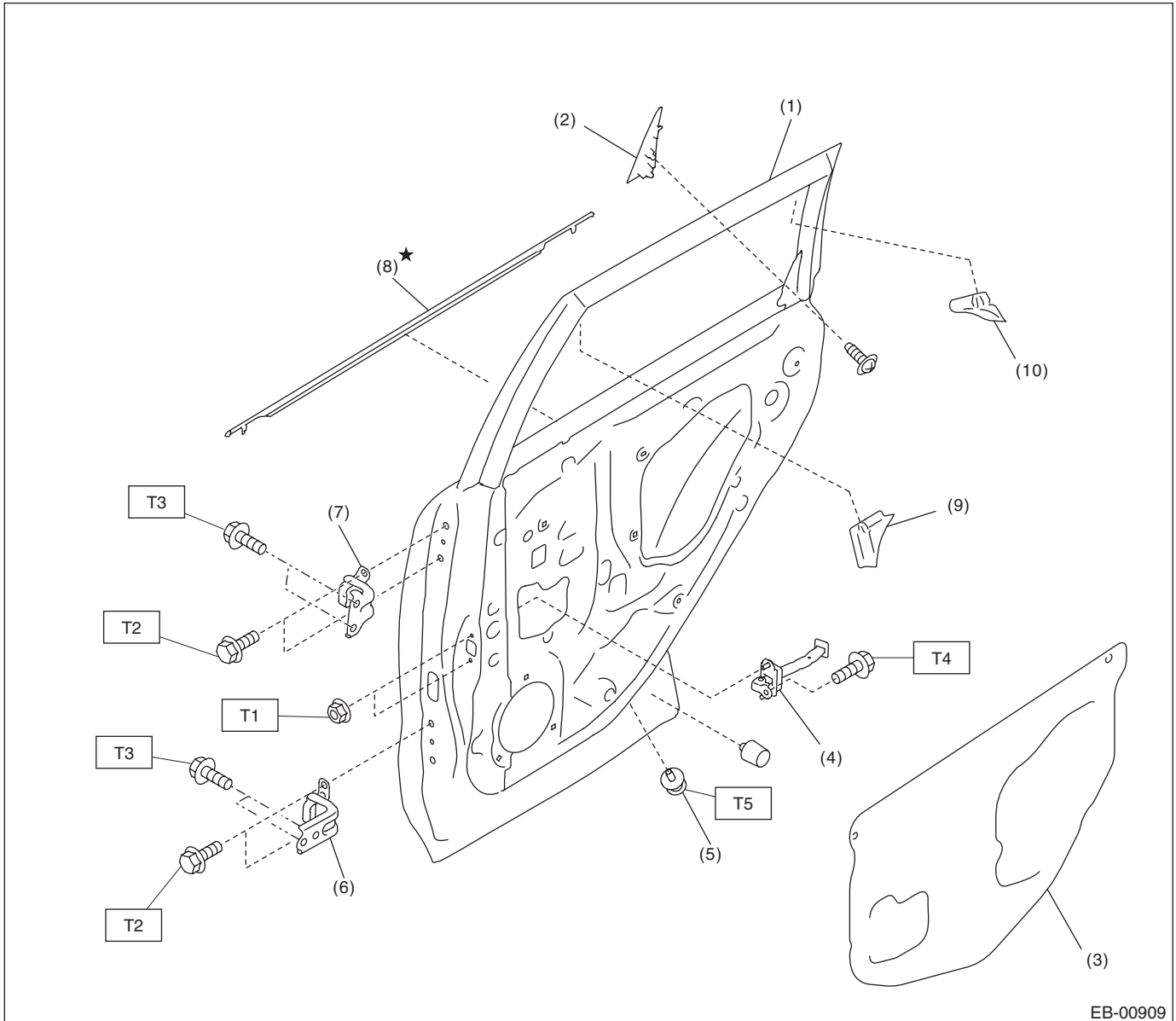
**T1: 7.5 (0.76, 5.5)**

**T2: 25 (2.55, 18.4)**

**T3: 30 (3.06, 22.1)**

**T4: 33 (3.36, 24.3)**

### 4. REAR DOOR



- |                               |                                     |
|-------------------------------|-------------------------------------|
| (1) Panel ASSY - rear door    | (6) Lower hinge - rear door         |
| (2) Cover - gusset outer      | (7) Upper hinge - rear door         |
| (3) Sealing cover - rear door | (8) Weather strip outer - rear door |
| (4) Checker ASSY - rear door  | (9) Cover B pillar - inner rear     |
| (5) Catcher - rear door       | (10) Cover C pillar - inner rear    |

#### ***Tightening torque: N·m (kgf-m, ft-lb)***

***T1: 7.5 (0.76, 5.5)***

***T2: 25 (2.55, 18.4)***

***T3: 30 (3.06, 22.1)***

***T4: 33 (3.36, 24.3)***

***T5: 38 (3.87, 28.0)***

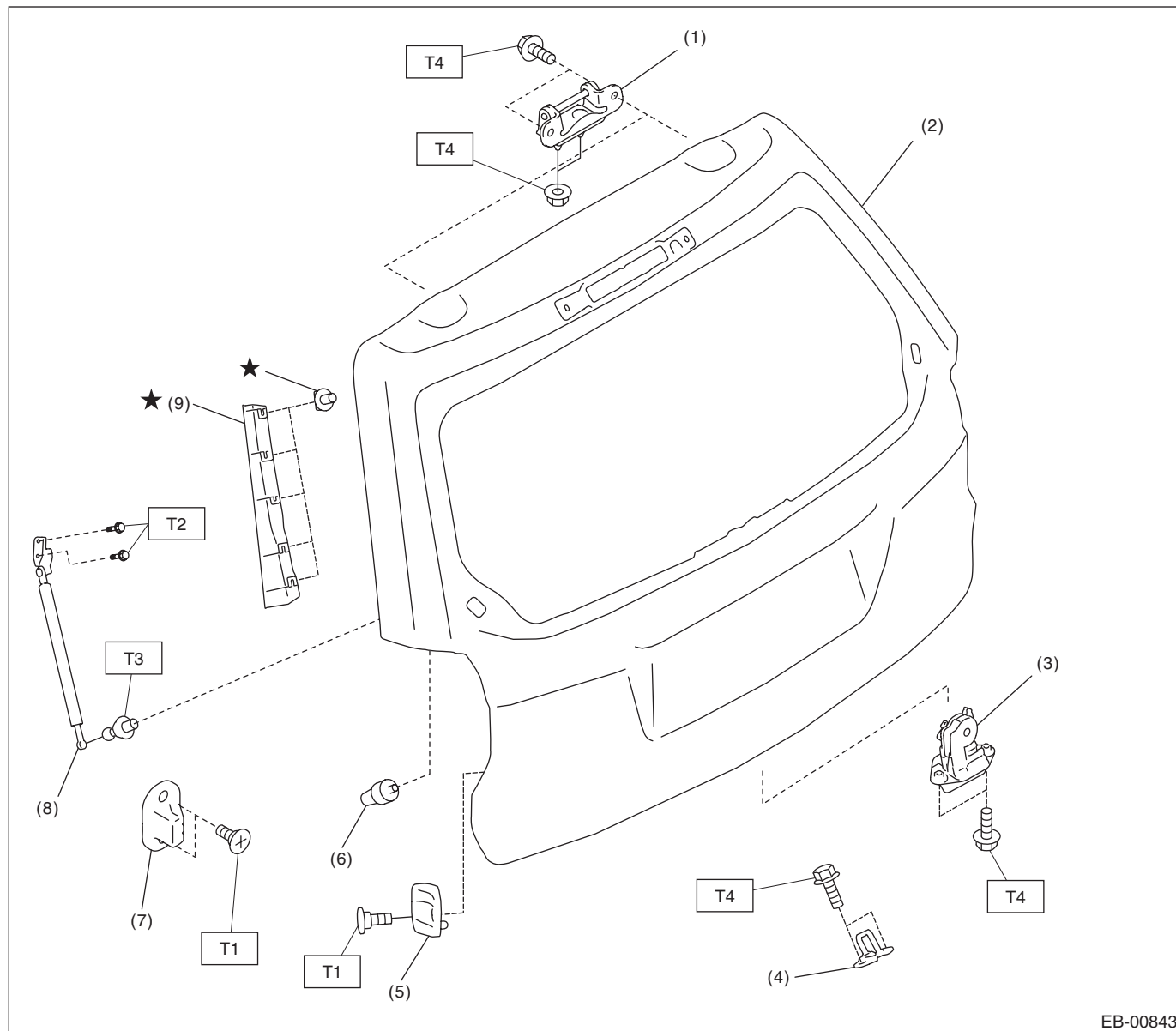
# General Description

## EXTERIOR BODY PANELS

### 5. REAR GATE

#### NOTE:

For the components of power rear gate, refer to the power rear gate system. <Ref. to PRG-2, COMPONENT, General Description.>



- |                                  |                              |
|----------------------------------|------------------------------|
| (1) Hinge - back door            | (6) Stopper - rear gate      |
| (2) Panel - rear gate            | (7) Buffer - body side       |
| (3) Latch & actuator - rear gate | (8) Stay ASSY - rear gate    |
| (4) Striker - rear gate          | (9) Molding - side rear gate |
| (5) Buffer - rear gate           |                              |

#### ***Tightening torque: N-m (kgf-m, ft-lb)***

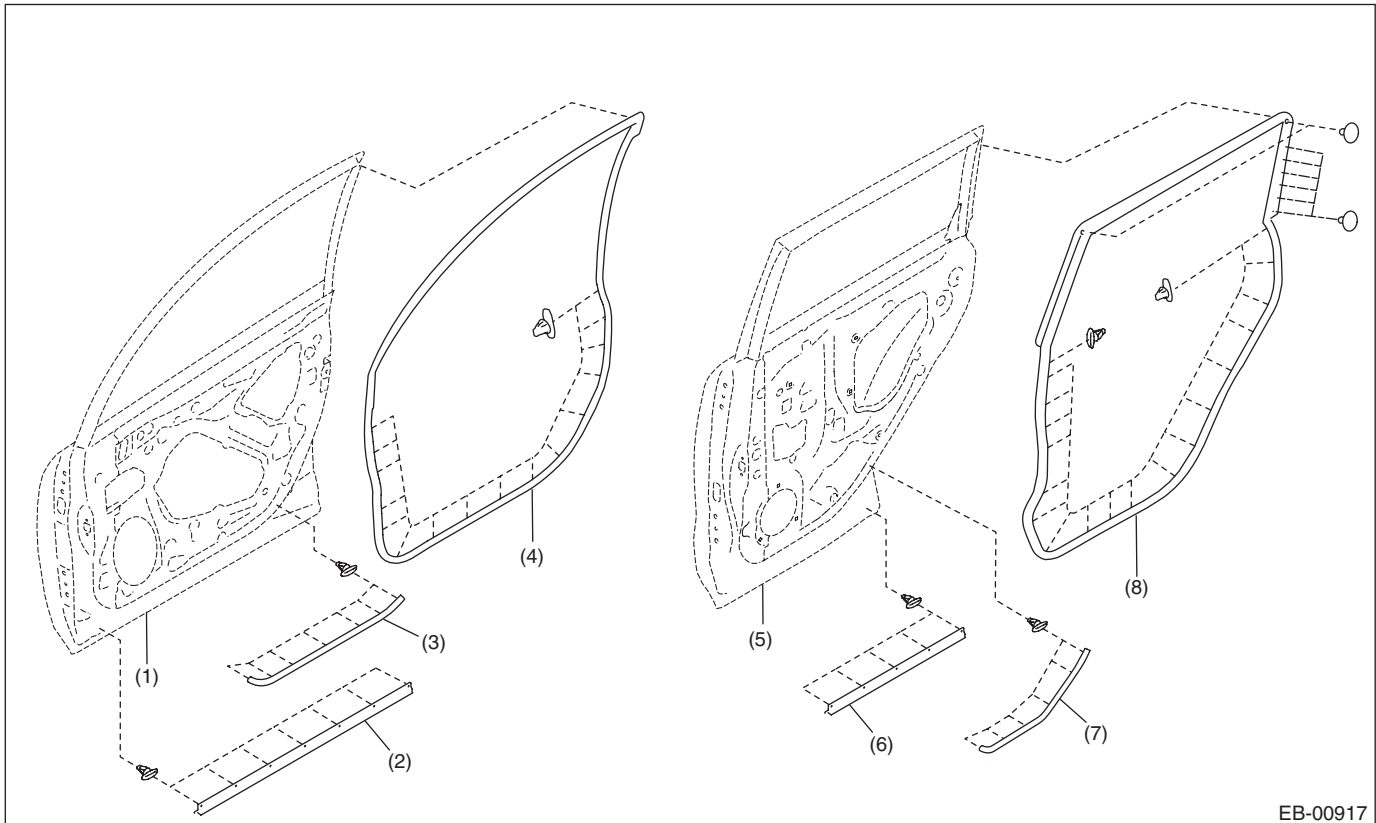
***T1: 7.5 (0.76, 5.5)***

***T2: 10 (1.02, 7.4)***

***T3: 20 (2.04, 14.8)***

***T4: 25 (2.55, 18.4)***

### 6. WEATHER STRIP



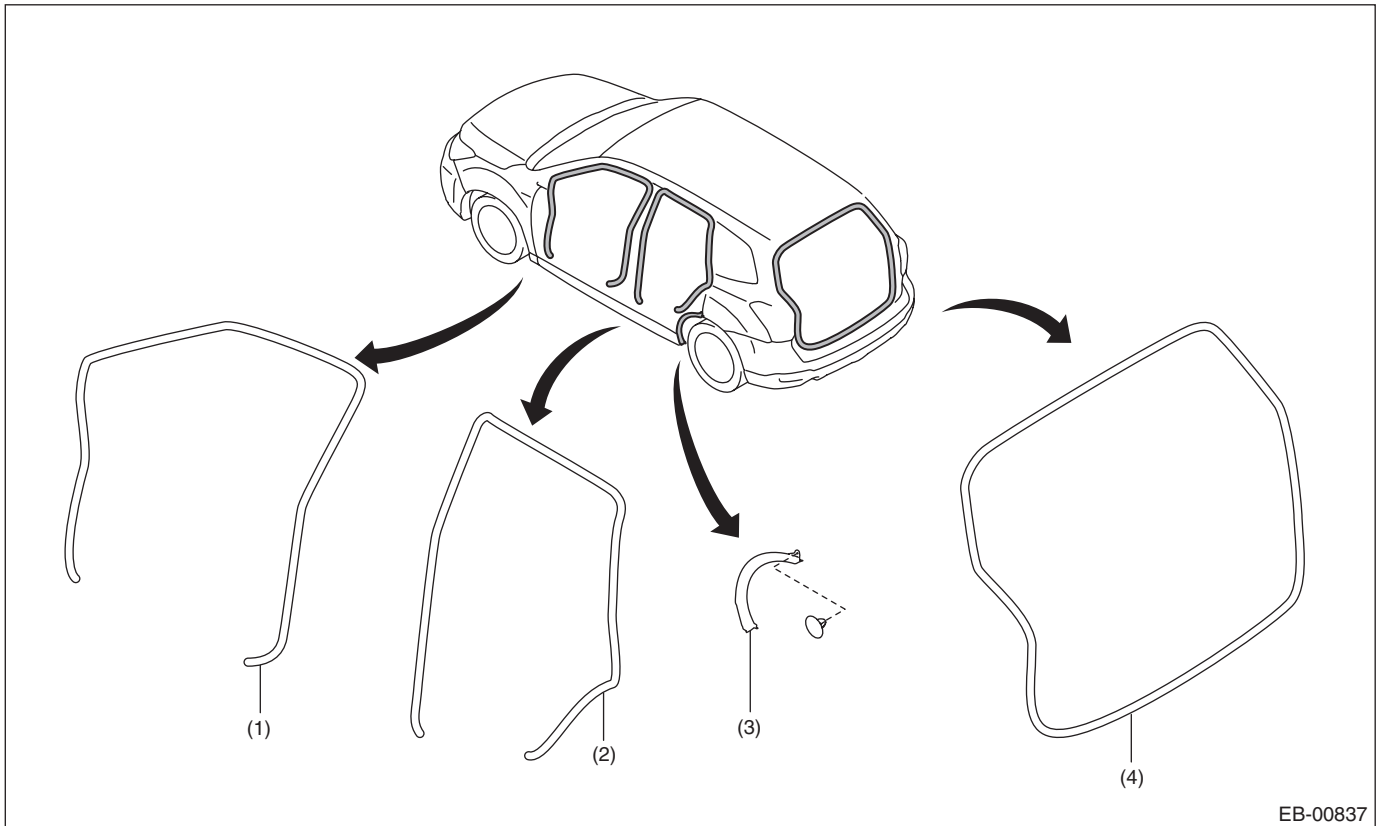
EB-00917

- |  |   |                                       |
|--|---|---------------------------------------|
| (1) Panel ASSY - front door                | (4) Weather strip - front door            | (7) Weather strip - rear door - lower |
| (2) Weather strip - front door - side sill | (5) Panel ASSY - rear door                | (8) Weather strip - rear door         |
| (3) Weather strip - front door - lower     | (6) Weather strip - rear door - side sill |                                       |



# General Description

## EXTERIOR BODY PANELS



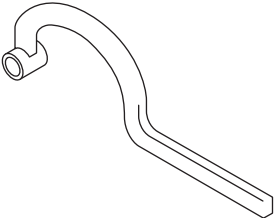
- |  |                               |
|--|-------------------------------|
| (1) Weather strip - body side flange front | (3) Weather strip - body arch |
| (2) Weather strip - body side flange rear  | (4) Weather strip - rear gate |

### C: CAUTION

Exterior body panels are heavy. When removing and installing them, do not drop and damage the panels. Also, be careful not to scratch the coated surfaces of the panels.

### D: PREPARATION TOOL

#### 1. SPECIAL TOOL

ILLUSTRATION	TOOL NUMBER	DESCRIPTION	REMARKS
 ST-925610000	925610000	WRENCH	Used for removing and installing door hinge.

#### 2. GENERAL TOOL

TOOL NAME	REMARKS
Clip remover	Used for removing various types of clips.