

General Description

CONTROL SYSTEMS

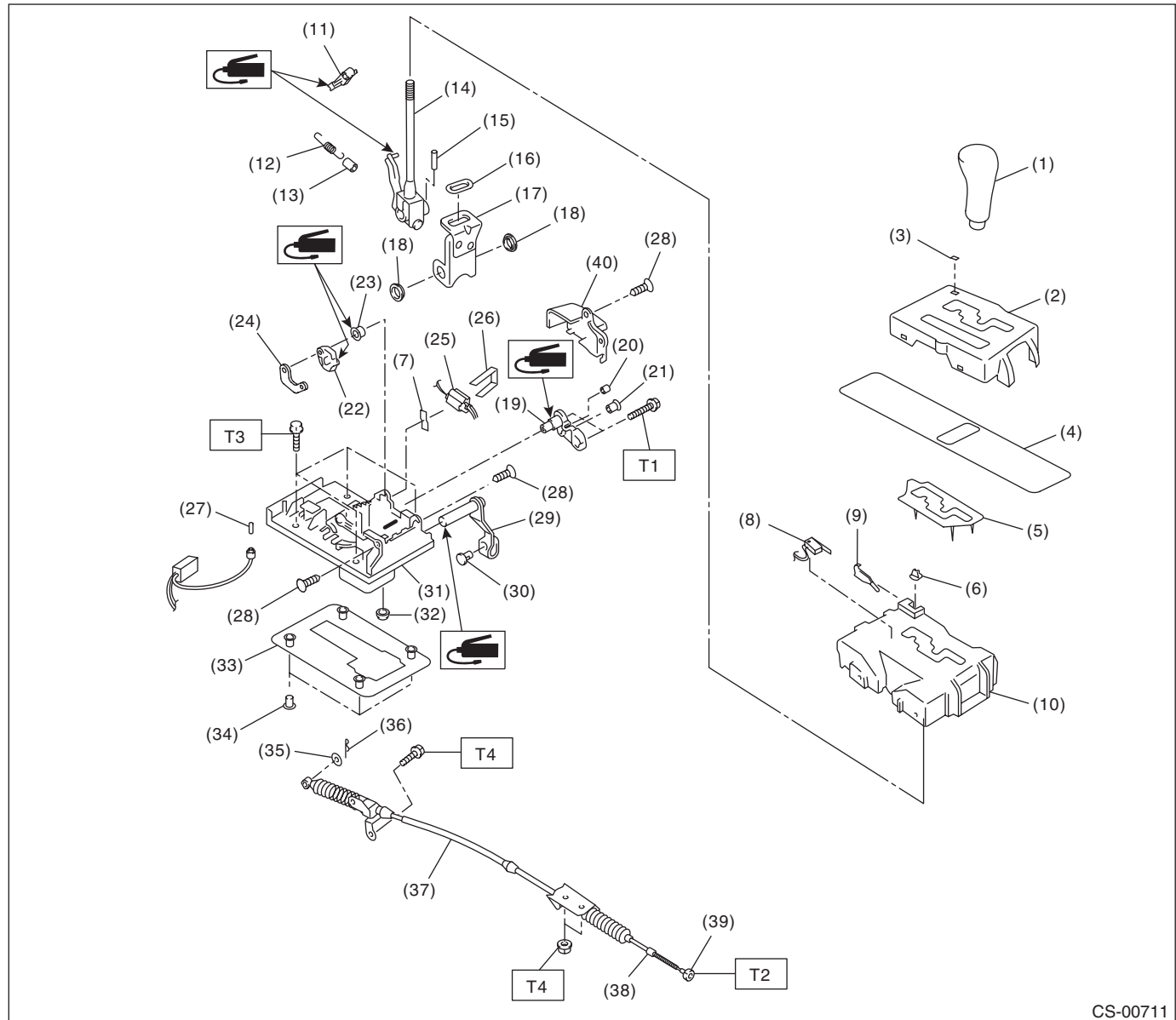
1. General Description

A: SPECIFICATION

Item	Specification
Swing torque of rod against lever	N (kgf, lb) 3.7 (0.38, 0.84) or less

B: COMPONENT

1. AT SELECT LEVER



CS-00711

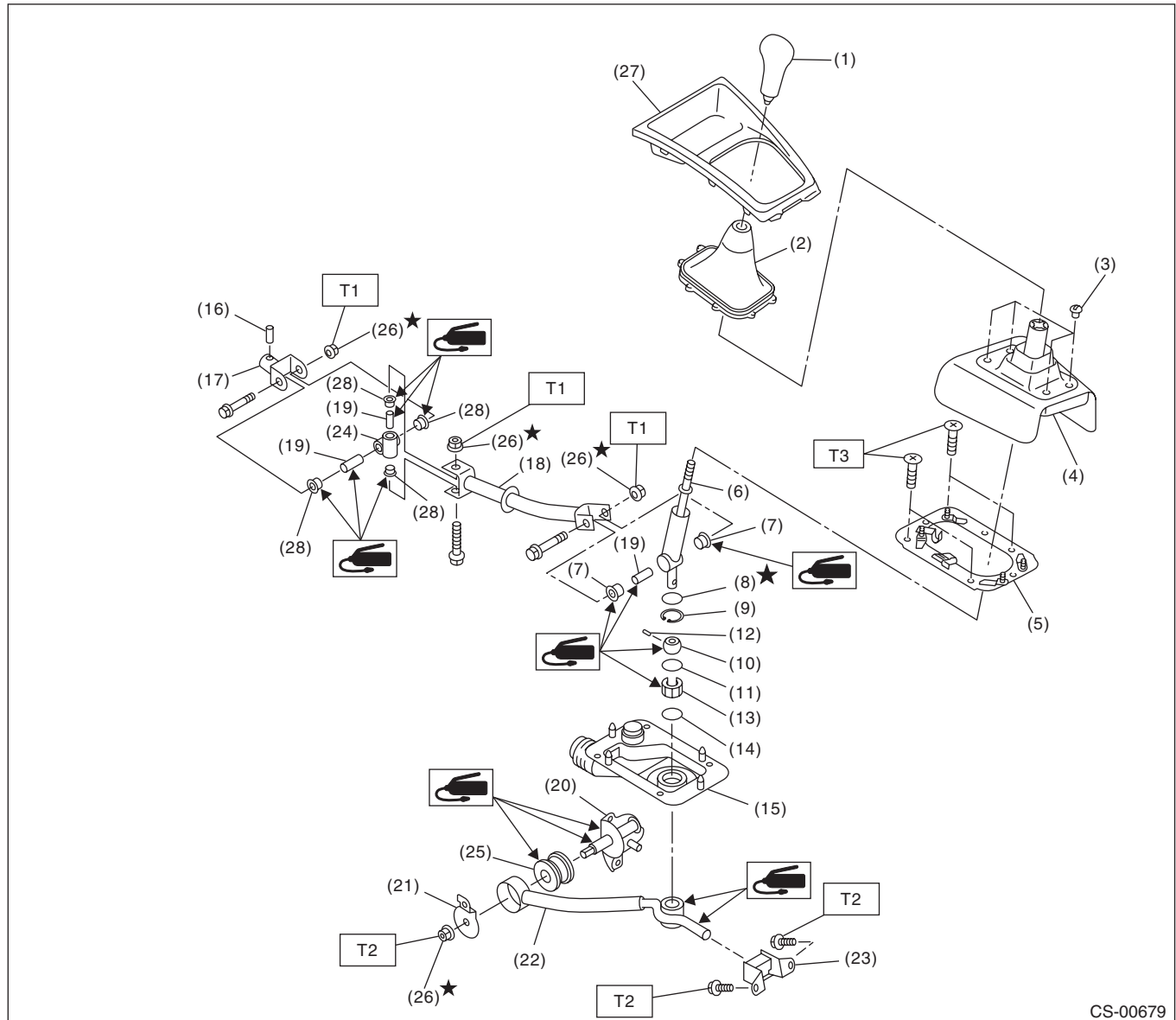
General Description

CONTROL SYSTEMS

(1) Grip	(17) Bracket	(32) Grommet
(2) Indicator cover	(18) Bushing	(33) Packing
(3) Cover	(19) Lock plate B	(34) Spacer
(4) Blind	(20) Bushing	(35) Washer
(5) Cushion plate	(21) Bushing	(36) Snap pin
(6) Button	(22) Lock plate A	(37) Select cable
(7) Cushion	(23) Bushing	(38) Adjusting nut B
(8) P range switch	(24) Lock plate C	(39) Adjusting nut A
(9) Spring	(25) Shift lock solenoid	(40) Cover
(10) Guide plate	(26) Clamp	
(11) Detent arm	(27) Indicator bulb	
(12) Detent spring	(28) Clip	
(13) Tube	(29) Select lever arm	
(14) Selector lever COMPL	(30) Bushing COMPL	
(15) Spring pin	(31) Base plate	
(16) Bushing		

Tightening torque:N·m (kgf-m, ft-lb)***T1: 2.0 (0.2, 1.4)******T2: 7.5 (0.76, 5.5)******T3: 13 (1.3, 9.4)******T4: 18 (1.8, 13.3)***

2. MT GEAR SHIFT LEVER



- | | | | | | |
|------|-------------------------|------|------------|------|-------------------------------------|
| (1) | Gear shift knob | (12) | Spring pin | (23) | Cushion rubber |
| (2) | Console boot | (13) | Bushing B | (24) | Boss |
| (3) | Clamp | (14) | O-ring | (25) | Bushing |
| (4) | Boot and insulator ASSY | (15) | Boot | (26) | Self-locking nut |
| (5) | Plate ASSY | (16) | Spring pin | (27) | Front cover |
| (6) | Lever | (17) | Joint | (28) | Bushing |
| (7) | Bushing | (18) | Rod | | |
| (8) | Lock wire | (19) | Spacer | | <i>Tightening torque:N·m</i> |
| (9) | Snap ring | (20) | Bracket | | <i>T1: 12 (1.2, 8.9)</i> |
| (10) | Bushing | (21) | Washer | | <i>T2: 18 (1.8, 13.3)</i> |
| (11) | O-ring | (22) | Stay | | <i>T3: 7.5 (0.76, 5.5)</i> |

Tightening torque:N·m (kgf-m, ft-lb)

T1: 12 (1.2, 8.9)

T2: 18 (1.8, 13.3)

T3: 7.5 (0.76, 5.5)

C: CAUTION

- Wear appropriate work clothing, including a cap, protective goggles and protective shoes when performing any work.
- Remove contamination including dirt and corrosion before removal, installation or disassembly.
- Keep the disassembled parts in order and protect them from dust and dirt.
- Before removal, installation or disassembly, be sure to clarify the failure. Avoid unnecessary removal, installation, disassembly and replacement.
- Use SUBARU genuine fluid, grease etc. or equivalent. Do not mix fluid, grease, etc. of different grades or manufacturers.
- Be sure to tighten fasteners including bolts and nuts to the specified torque.
- Place shop jacks or rigid racks at the specified points.
- Apply grease onto sliding or revolving surfaces before installation.
- Before installing O-rings or snap rings, apply sufficient amount of grease to avoid damage and deformation.
- Before securing a part on a vise, set cushioning material such as wood blocks, aluminum plate, or shop cloth between the part and the vise.
- Before disconnecting electrical connectors, be sure to disconnect the negative terminal from battery.