

## CLUTCH SYSTEM

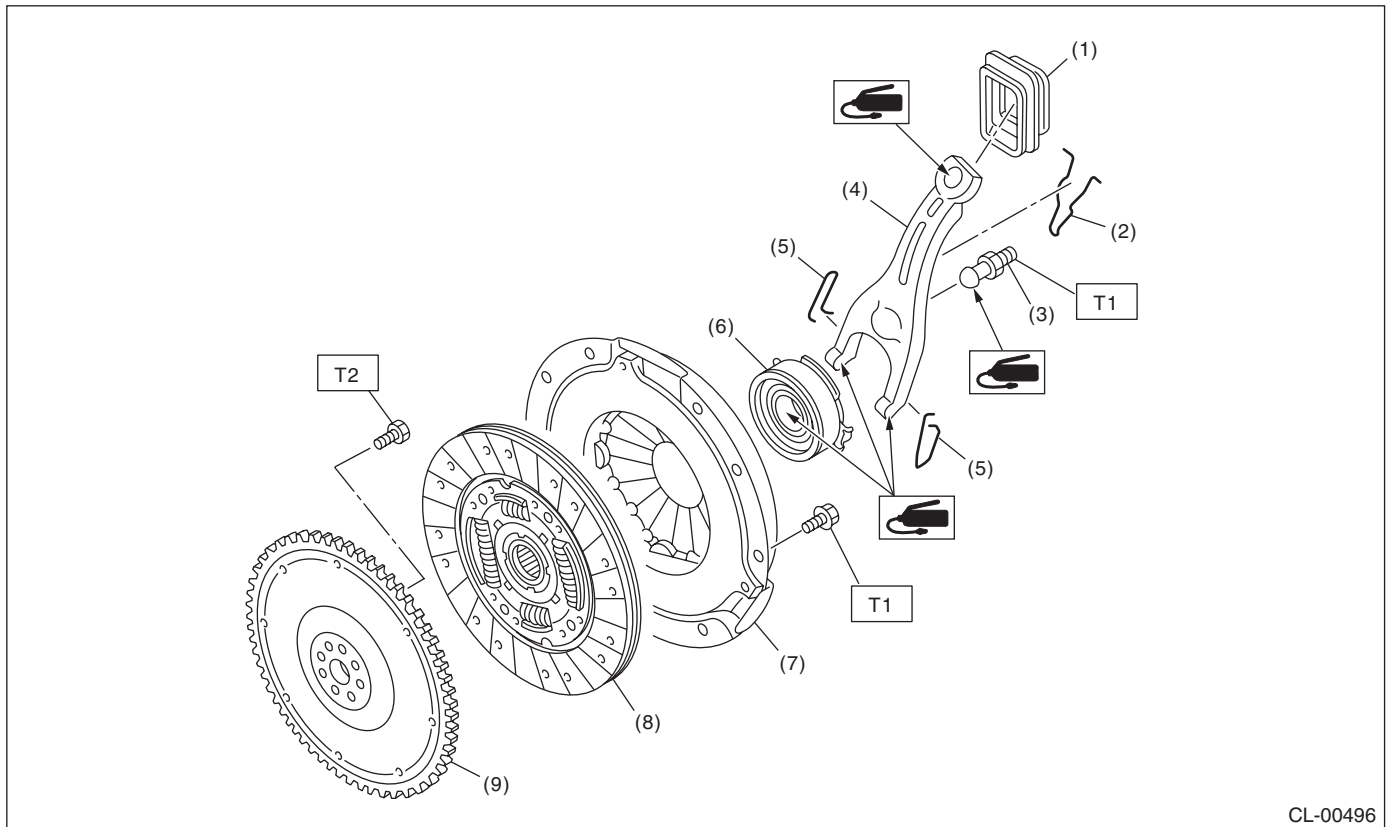
## A: SPECIFICATION

## CL-2

### B: COMPONENT

#### 1. CLUTCH ASSEMBLY

Non-turbo model



CL-00496

- |                              |                     |
|------------------------------|---------------------|
| (1) Release lever dust cover | (6) Release bearing |
| (2) Lever spring             | (7) Clutch cover    |
| (3) Pivot                    | (8) Clutch disc     |
| (4) Release lever            | (9) Flywheel        |
| (5) Clip                     |                     |

**Tightening torque: N·m (kgf-m, ft-lb)**

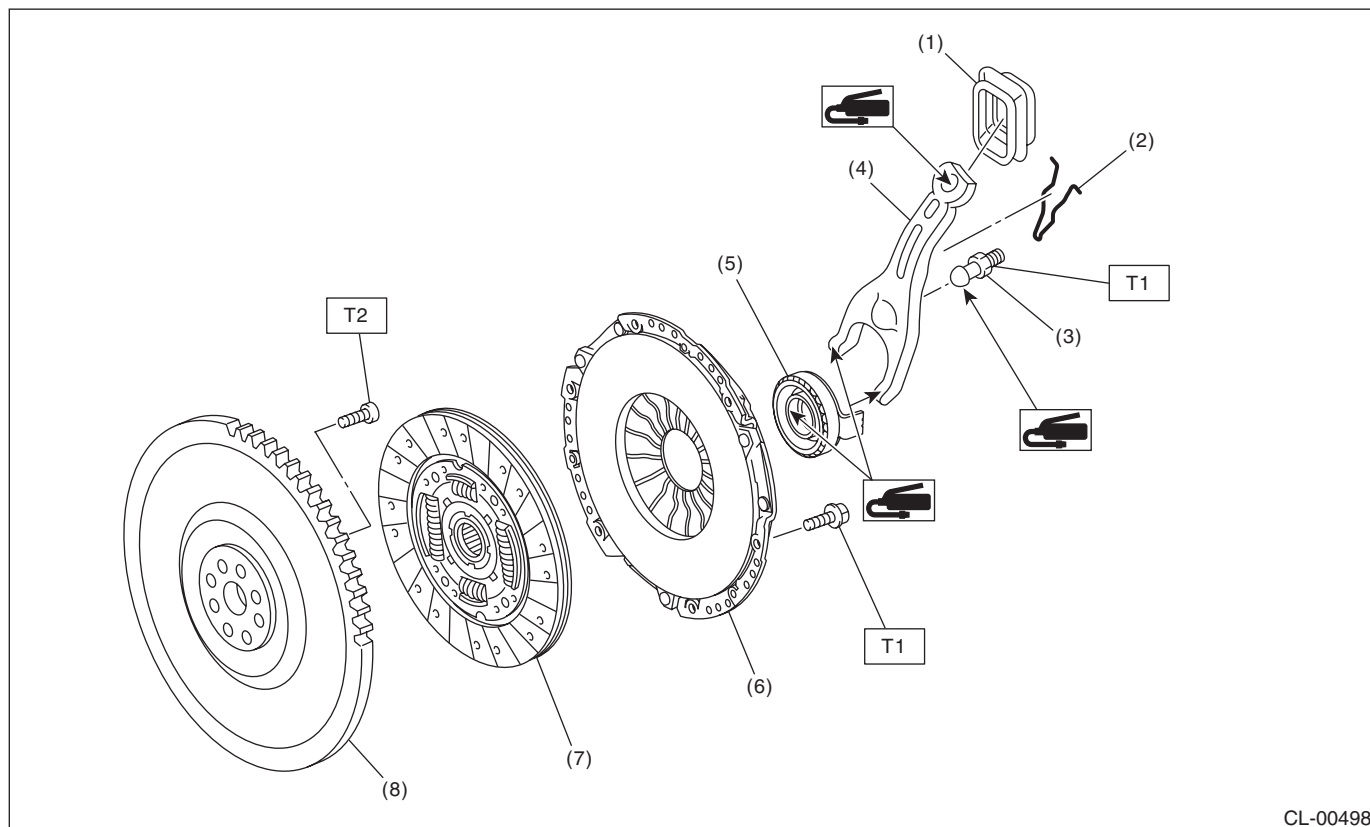
**T1: 16 (1.6, 11.6)**

**T2: 72 (7.3, 52.8)**

# General Description

## CLUTCH SYSTEM

### Turbo model



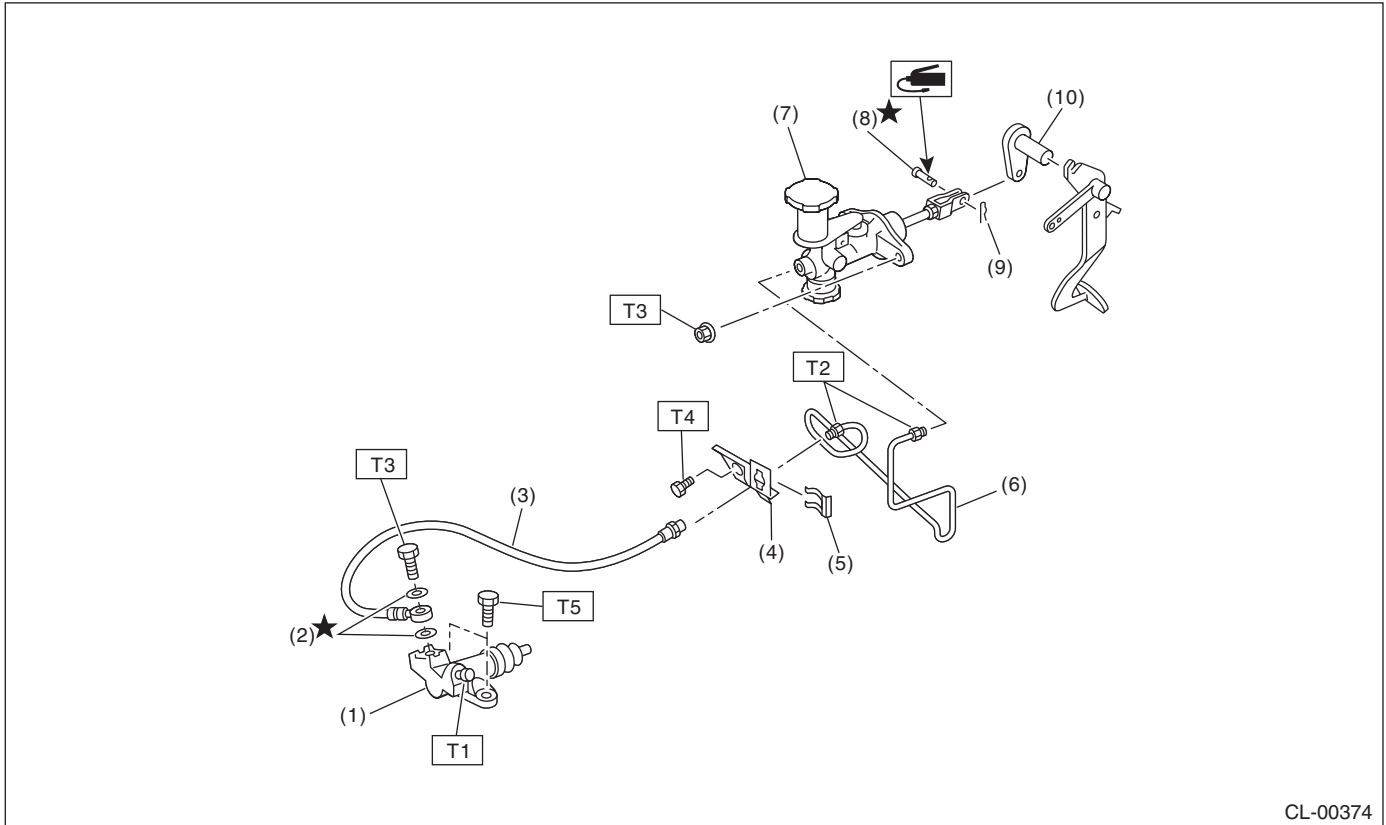
- |                              |                     |
|------------------------------|---------------------|
| (1) Release lever dust cover | (5) Release bearing |
| (2) Lever spring             | (6) Clutch cover    |
| (3) Pivot                    | (7) Clutch disc     |
| (4) Release lever            | (8) Flywheel        |

**Tightening torque: N·m (kgf-m, ft-lb)**

**T1: 16 (1.6, 11.6)**

**T2: 72 (7.3, 52.8)**

### 2. CLUTCH PIPE AND HOSE (NON-TURBO MODEL)



- |                        |                          |
|------------------------|--------------------------|
| (1) Operating cylinder | (6) Clutch pipe          |
| (2) Washer             | (7) Master cylinder ASSY |
| (3) Clutch hose        | (8) Clevis pin           |
| (4) Bracket            | (9) Snap pin             |
| (5) Clip               | (10) Lever               |

**Tightening torque: N·m (kgf-m, ft-lb)**

**T1: 7.8 (0.8, 5.8)**

**T2: 15 (1.5, 10.8)**

**T3: 18 (1.8, 13.0)**

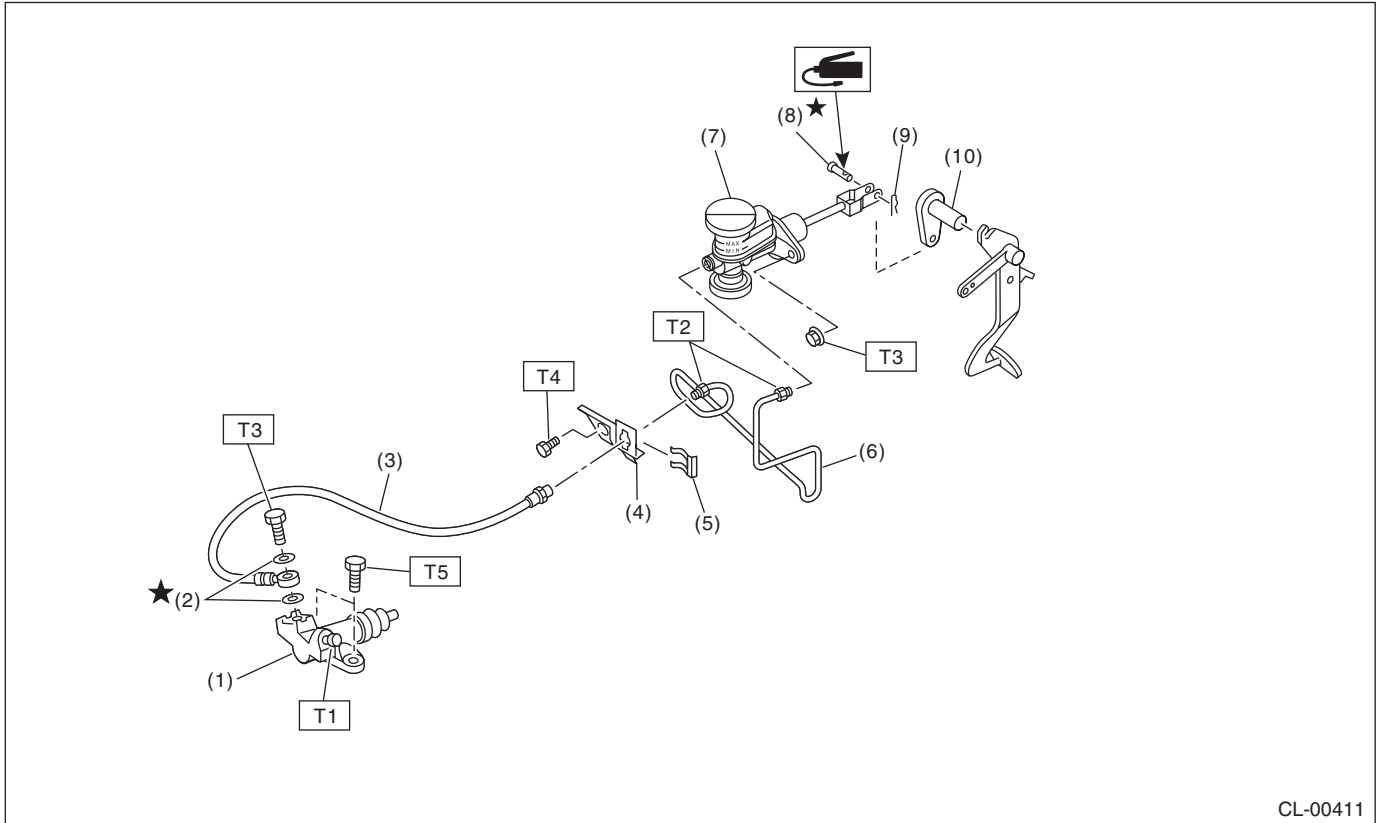
**T4: 25 (2.5, 18.1)**

**T5: 37 (3.8, 27.5)**

# General Description

## CLUTCH SYSTEM

### 3. CLUTCH PIPE AND HOSE (TURBO MODEL)



- |                        |                          |
|------------------------|--------------------------|
| (1) Operating cylinder | (6) Clutch pipe          |
| (2) Washer             | (7) Master cylinder ASSY |
| (3) Clutch hose        | (8) Clevis pin           |
| (4) Bracket            | (9) Snap pin             |
| (5) Clip               | (10) Lever               |

#### ***Tightening torque:N·m (kgf-m, ft-lb)***

***T1: 7.8 (0.8, 5.8)***

***T2: 15 (1.5, 10.8)***

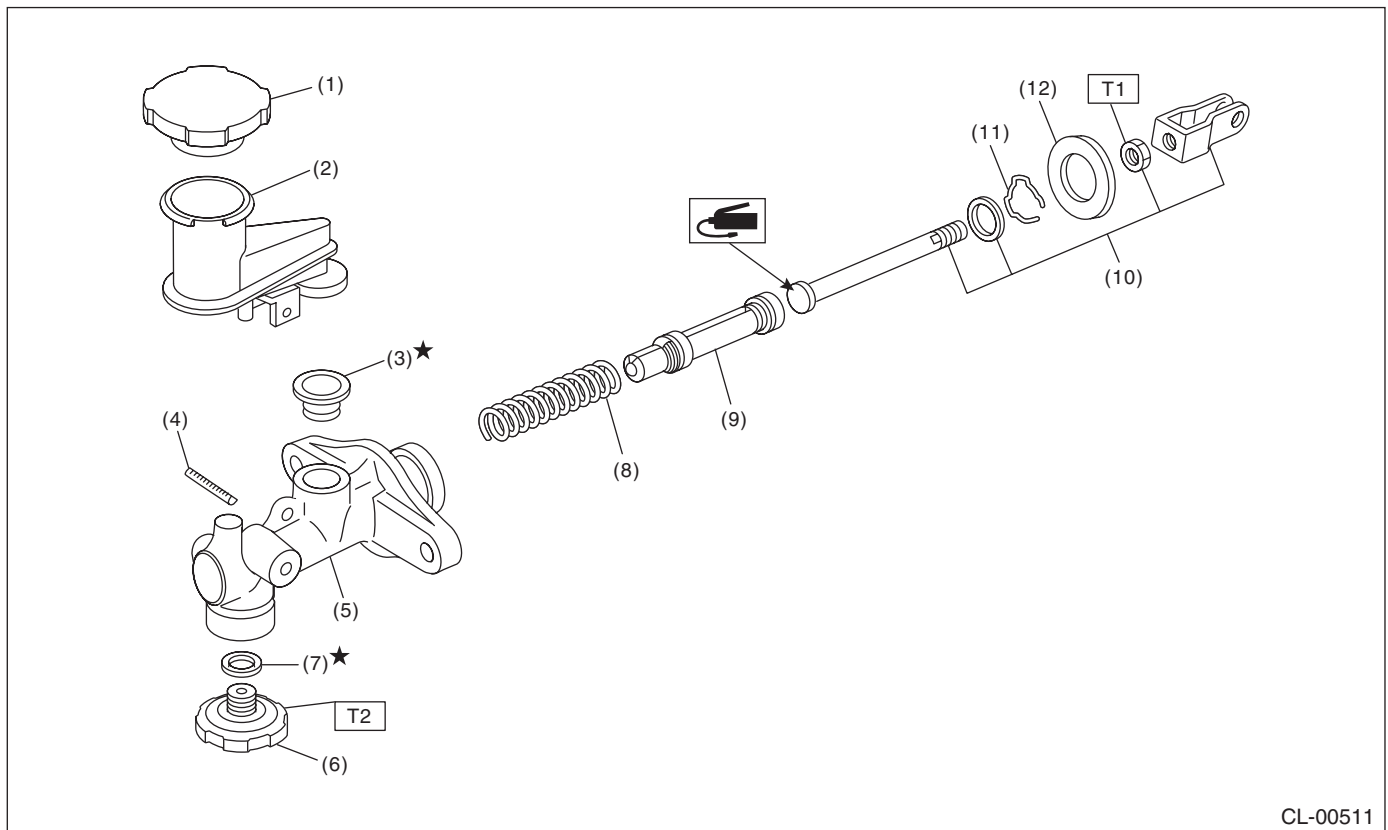
***T3: 18 (1.8, 13.0)***

***T4: 25 (2.5, 18.1)***

***T5: 37 (3.8, 27.5)***

### 4. MASTER CYLINDER

#### Non-turbo model



CL-00511

- (1) Reservoir cap
- (2) Reservoir tank
- (3) Oil seal
- (4) Straight pin
- (5) Master cylinder
- (6) Clutch damper

- (7) Gasket
- (8) Return spring
- (9) Piston
- (10) Push rod ASSY
- (11) Piston stop ring

- (12) Seat

**Tightening torque: N·m (kgf-m, ft-lb)**

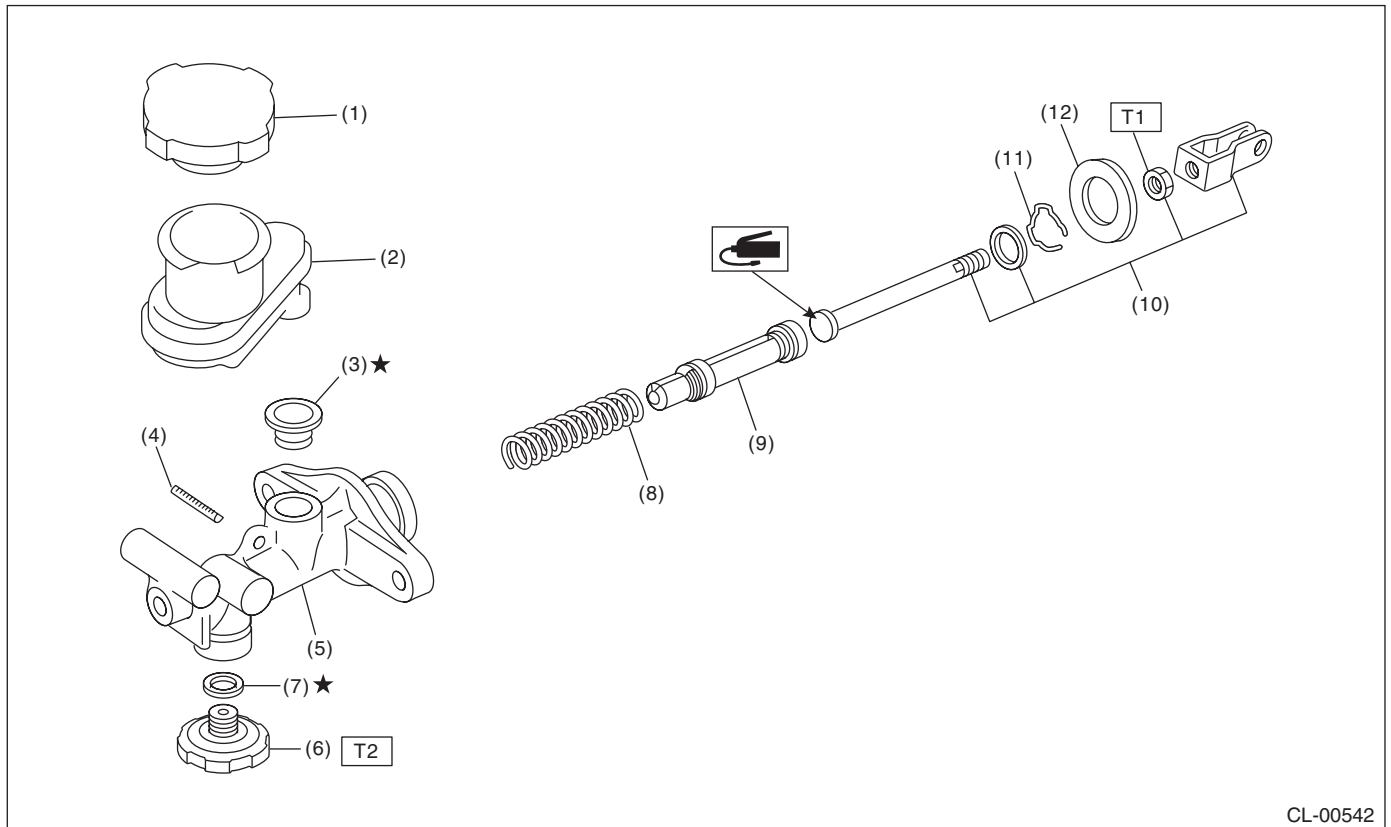
**T1: 10 (1.0, 7)**

**T2: 46.6 (4.75, 34.4)**

# General Description

## CLUTCH SYSTEM

### Turbo model



- (1) Reservoir cap
- (2) Reservoir tank
- (3) Oil seal
- (4) Straight pin
- (5) Master cylinder
- (6) Clutch damper

- (7) Gasket
- (8) Return spring
- (9) Piston
- (10) Push rod ASSY
- (11) Piston stop ring

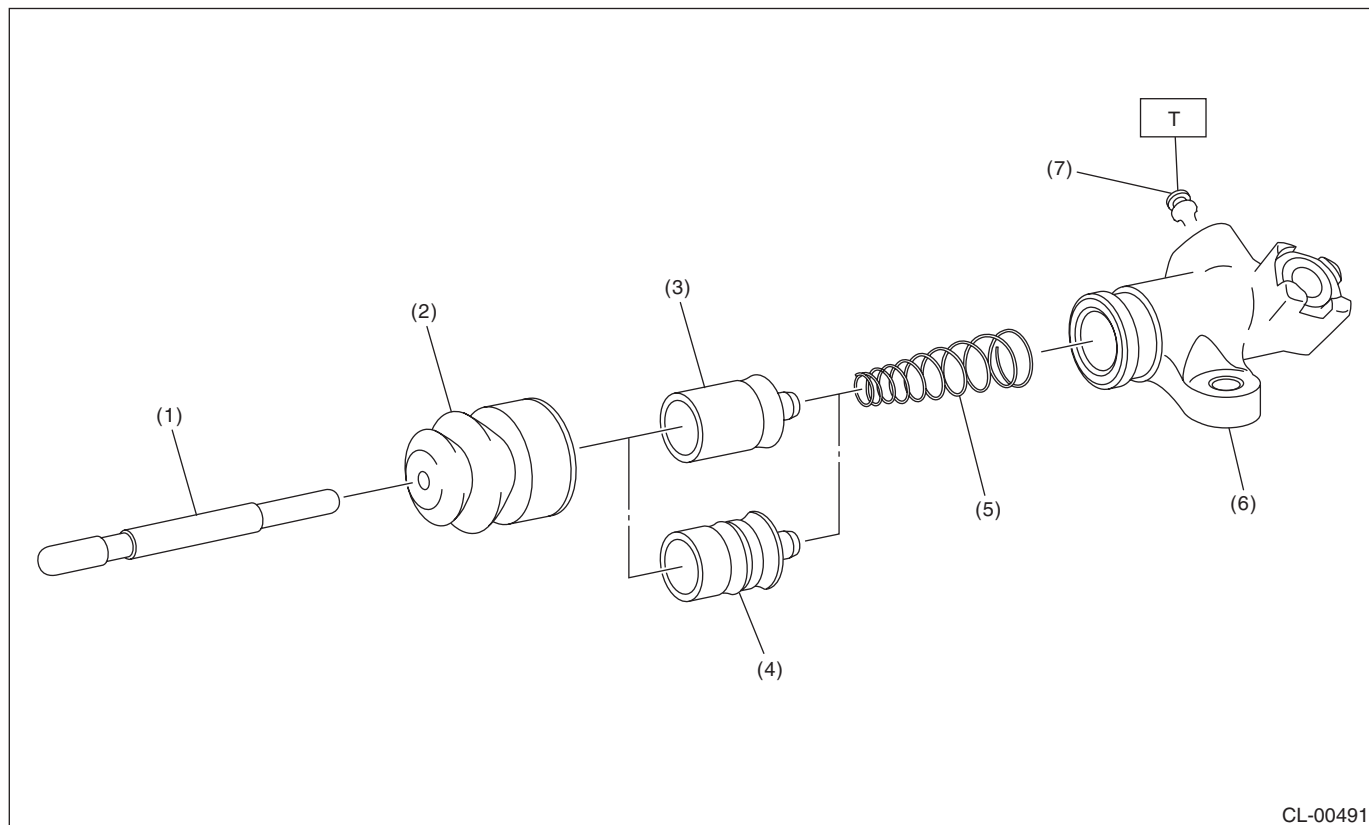
- (12) Seat

**Tightening torque: N·m (kgf-m, ft-lb)**

**T1: 10 (1.0, 7.2)**

**T2: 46.6 (4.75, 34.4)**

### 5. OPERATING CYLINDER



CL-00491

- |                              |                        |
|------------------------------|------------------------|
| (1) Push rod                 | (5) Piston spring      |
| (2) Boot                     | (6) Operating cylinder |
| (3) Piston (Non-turbo model) | (7) Bleeder screw      |
| (4) Piston (Turbo model)     |                        |

***Tightening torque: N·m (kgf-m, ft-lb)***

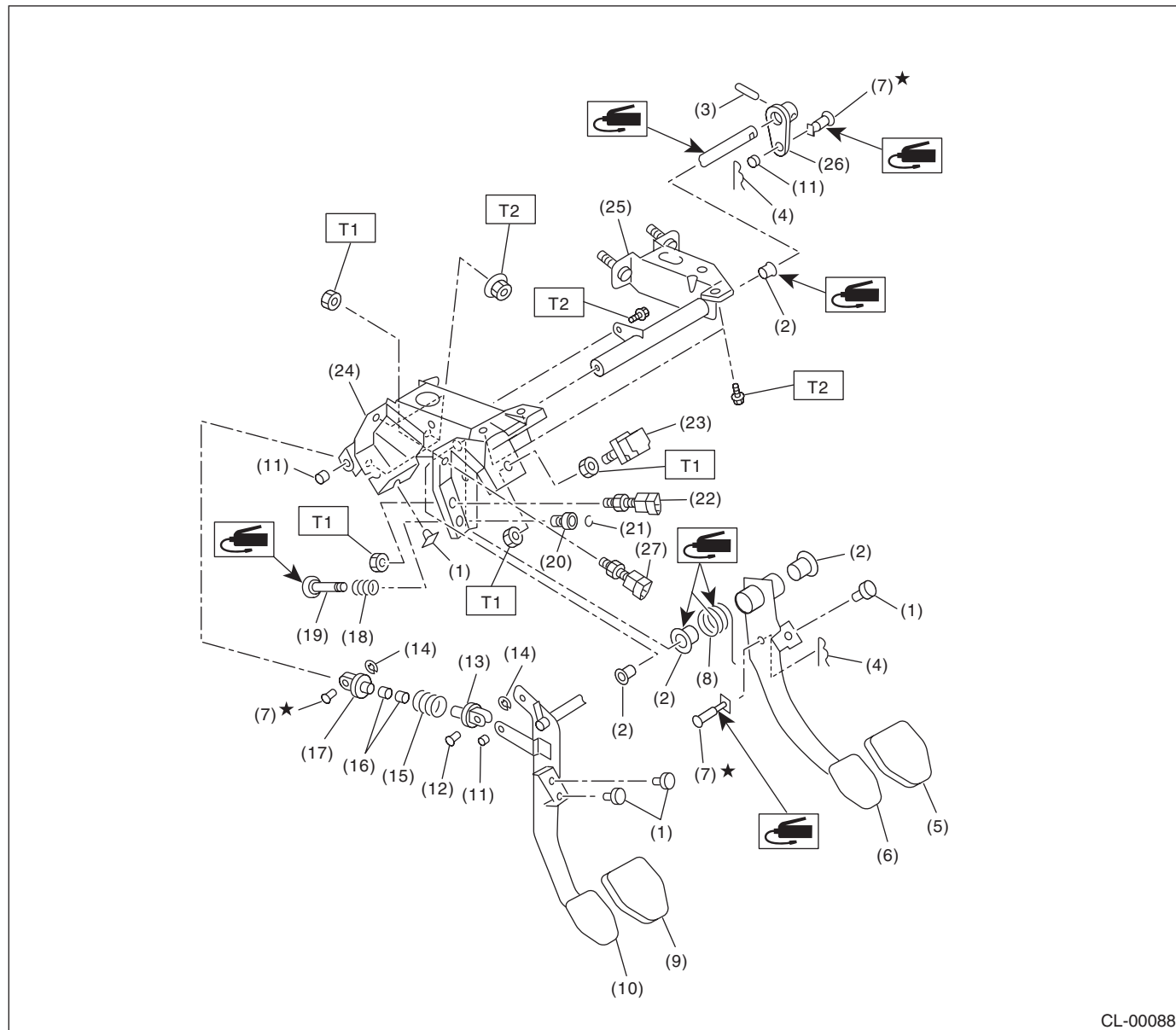
***T: 7.8 (0.8, 5.8)***



# General Description

## CLUTCH SYSTEM

### 6. CLUTCH PEDAL



CL-00088

(1) Stopper	(12) Clutch clevis pin	(22) Clutch switch
(2) Bushing	(13) Assist rod A	(23) Stop light switch
(3) Spring pin	(14) Clip	(24) Pedal bracket
(4) Snap pin	(15) Assist spring	(25) Clutch master cylinder bracket
(5) Brake pedal pad	(16) Assist bushing	(26) Lever
(6) Brake pedal	(17) Assist rod B	(27) Clutch switch (Clutch start)
(7) Clevis pin	(18) Spring S	
(8) Brake pedal spring	(19) Rod S	
(9) Clutch pedal pad	(20) Bushing S	
(10) Clutch pedal	(21) Clip	
(11) Bushing C		

**Tightening torque: N·m (kgf-m, ft-lb)**

**T1: 8 (0.8, 5.8)**

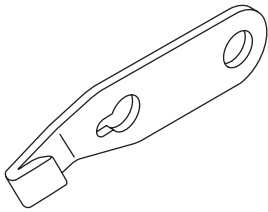
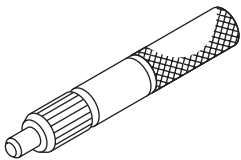
**T2: 18 (1.8, 13.0)**

**C: CAUTION**

- Wear appropriate work clothing, including a cap, protective goggles and protective shoes when performing any work.
- Remove contamination including dirt and corrosion before removal, installation or disassembly.
- Keep the disassembled parts in order and protect them from dust and dirt.
- Before removal, installation or disassembly, be sure to clarify the problem. Avoid unnecessary removal, installation, disassembly and replacement.
- Vehicle components are extremely hot after driving. Be wary of receiving burns from heated parts.
- Use SUBARU genuine fluid, grease etc. or equivalent. Do not mix fluid, grease, etc. of different grades or manufacturers.

- Be sure to tighten fasteners including bolts and nuts to the specified torque.
- Place shop jacks or rigid racks at the specified points.
- Apply grease onto sliding or revolving surfaces before installation.
- Before installing O-rings or snap rings, apply sufficient amount of fluid to avoid damage and deformation.
- Before securing a part on a vise, set cushioning material such as wood blocks, aluminum plate, or shop cloth between the part and the vise.
- Keep fluids away from the vehicle body. If any fluid contacts the vehicle body, immediately flush the area with water.

**D: PREPARATION TOOL****1. SPECIAL TOOL**

ILLUSTRATION	TOOL NUMBER	DESCRIPTION	REMARKS
 ST-498497100	498497100	CRANKSHAFT STOPPER	Used for stopping rotation of the flywheel when loosening/tightening bolts, etc.
 ST-499747100	499747100	CLUTCH DISC GUIDE	Used when installing the clutch disc to the flywheel.

**2. GENERAL TOOL**

TOOL NAME	REMARKS
Circuit tester	Used for measuring resistance, voltage and ampere.
Dial gauge	Used for measuring clutch disc run-out.
Depth gauge	Used for measuring clutch disc wear.