

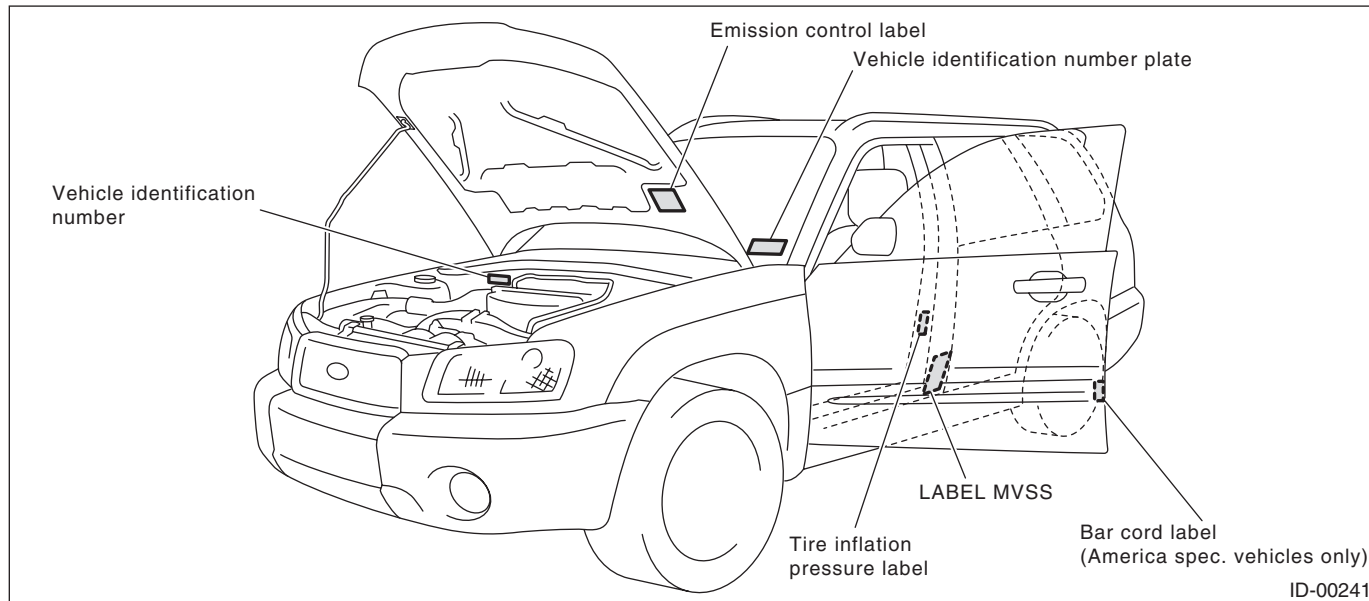
### 1. Identification

#### A: IDENTIFICATION

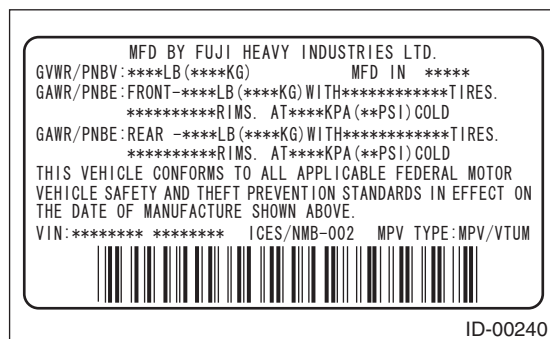
##### 1. IDENTIFICATION NUMBER AND LABEL LOCATIONS

The Vehicle Identification Numbers (V.I.N.) is used to classify the vehicle.

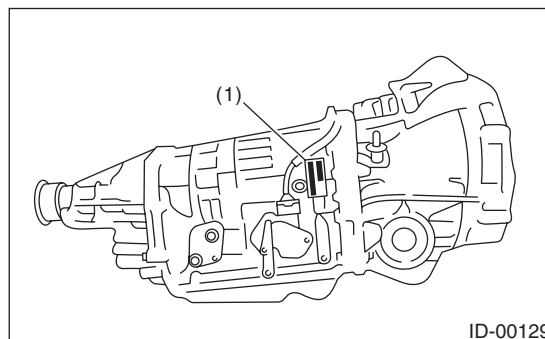
##### • POSITIONING OF THE PLATE LABEL FOR IDENTIFICATION



##### • LABEL MVSS

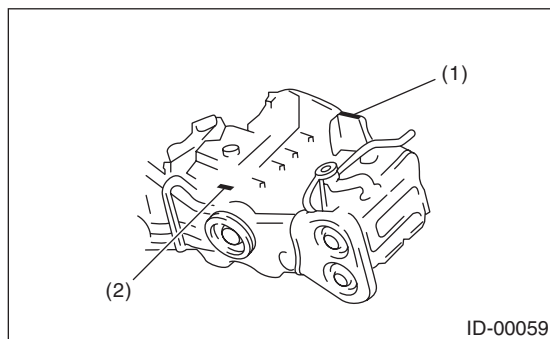


##### • AUTOMATIC TRANSMISSION



(1) AT type and transmission serial number label

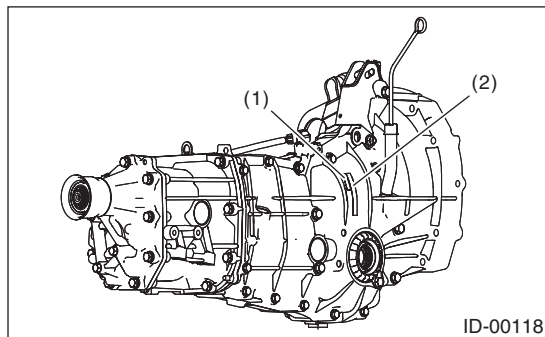
##### • ENGINE



(1) Engine serial number (Punch mark)

(2) Engine type (Crankcase upper side)

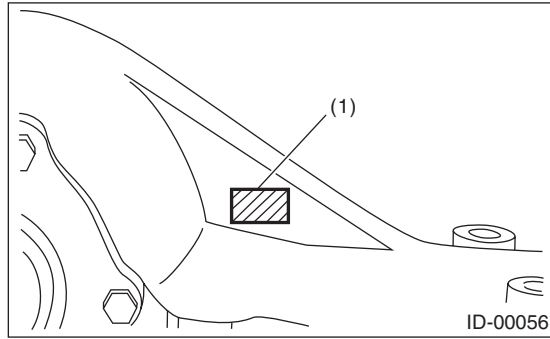
##### • MANUAL TRANSMISSION



(1) Transmission serial number

(2) MT type label

- **REAR DIFFERENTIAL**



(1) Type (white paint)

# Identification

## IDENTIFICATION

### 2. MEANING OF V.I.N.

The meaning of the V.I.N. is as follows:

**JF1SG636X8G700001**

The large parentheses ([ ]) located in front and back are stop marks.

Digits	Code	Meaning	Details
1 — 3	JF1	Origin of manufacture of body	JF1: FHI manufactured passenger car
4	S	Car line	S: Forester
5	G	Body type	G: Wagon
6	6	Displacement class	6: 2.5 L AWD
7	3	Grade	3: 2.5 X 5: 2.5 XS 6: FORESTER SPORTS 7: L.L. Bean 9: 2.5 XT
8	6	Restraint	6: Manual belt, dual airbags, side airbags
9	X	Check numbers	X or 0 — 9
10	8	Model year	8: 2008MY
11	G	Transmission type	G: Full-time AWD 5 speed MT S/R H: Full-time AWD 4 speed AT
12 — 17	700001	Serial number	—

### 3. MODEL NUMBER PLATE

The model number plate indicates: the applied model, the option code, the trim code, the engine type, the transmission type, and the exterior color code. This information is helpful when placing orders for parts.

**SG9FY4J**

Digits	Code	Meaning	Details
1	S	Series	S: Forester
2	G	Body type	G: Wagon
3	9	Total engine displacement Drive system	9: 2.5 L AWD
4	F	Model year	F: 2008MY
5	Y	Destination	Y: U.S.A., Canada
6	4	Grade	4: 2.5 X 6: 2.5 XS 9: 2.5 XT A: FORESTER SPORTS C: L.L. Bean
7	J	Transmission, fuel feed system	D: DOHC turbo MFI 5 speed MT J: SOHC MFI 5 speed MT P: DOHC turbo MFI 4 speed AT R: SOHC MFI 4 speed AT

The engine and transmission type are as follows.

## Engine

### EJ253ASQFB

Digits	Code	Meaning	Details
1 and 2	EJ	Engine type symbol	EJ: 4 cylinder
3 and 4	25	Displacement class	25: 2.5 L
5	3	Fuel feed system	3: MFI non-turbo (SOHC) 5: MFI DOHC turbo
6	A	Exhaust regulations	A: For states not using California emission standards B: For all states C: For states using California emission standards
7	S	Mounted transmission	E: 5MT (WAD) P: 4AT S: 5MT
8 — 10	QFB	Detailed specifications	Used for ordering parts. Refer to parts catalog for details.

## Transmission

### TY755VC7AA

Digits	Code	Meaning	Details
1	T	Transmission	T: Transmission
2	Y	Transmission system	V: Full-time AWD AT center differential (VTD) Y: Full-time AWD MT center differential Z: Full-time AWD AT MPT
3 and 4	75	Classification	1B: AT 75: MT
5	5	Series	5: MT, AT
6	V	Transmission basic specifications	L: MP-T full-time AWD direct 4 speed AT M: VTD center differential full-time AWD direct 4 speed AT V: Full-time AWD 5 speed MT single range with viscous coupling center differential
7	C	Installed body	C: 2.5 L SOHC B: 2.5 L DOHC turbo 5 speed MT W: 2.5 L DOTC turbo 4 speed AT
8 — 10	7AA	Detailed specifications	Used for ordering parts. Refer to parts catalog for details.

## Rear differential

### T2

Code	Reduction gear ratio	LSD
T2	4.111	None
JP	4.111	Viscous
TP	4.444	None
CF	4.444	Viscous

## Option code

### U5ZK

Digits	Code	Meaning	Details
1 — 2	U5	Destination	C0: Canada U4: U.S. (for all states) U5: U.S. (for states using California emission standards) U6: U.S. (for states not using California emission standards)
3 — 4	ZK	Vehicle main options	—

# Identification

IDENTIFICATION

---