

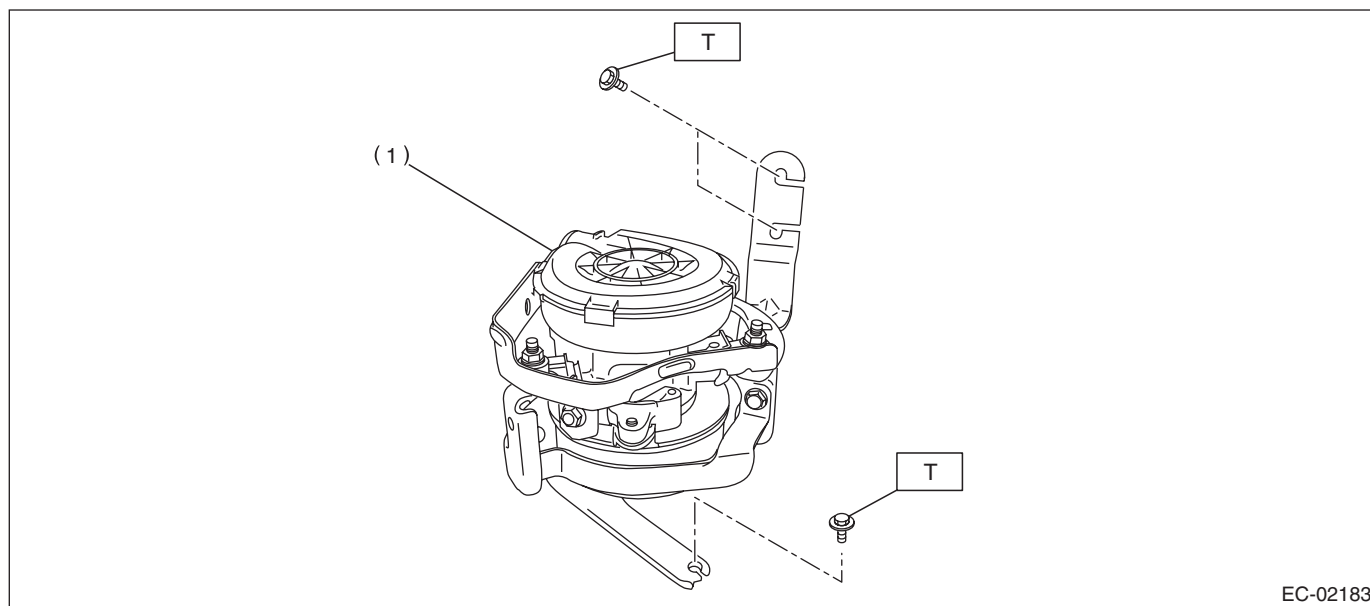
## General Description

EMISSION CONTROL (AUX. EMISSION CONTROL DEVICES)

### 1. General Description

#### A: COMPONENT

##### 1. SECONDARY AIR PUMP



EC-02183

(1) Secondary air pump

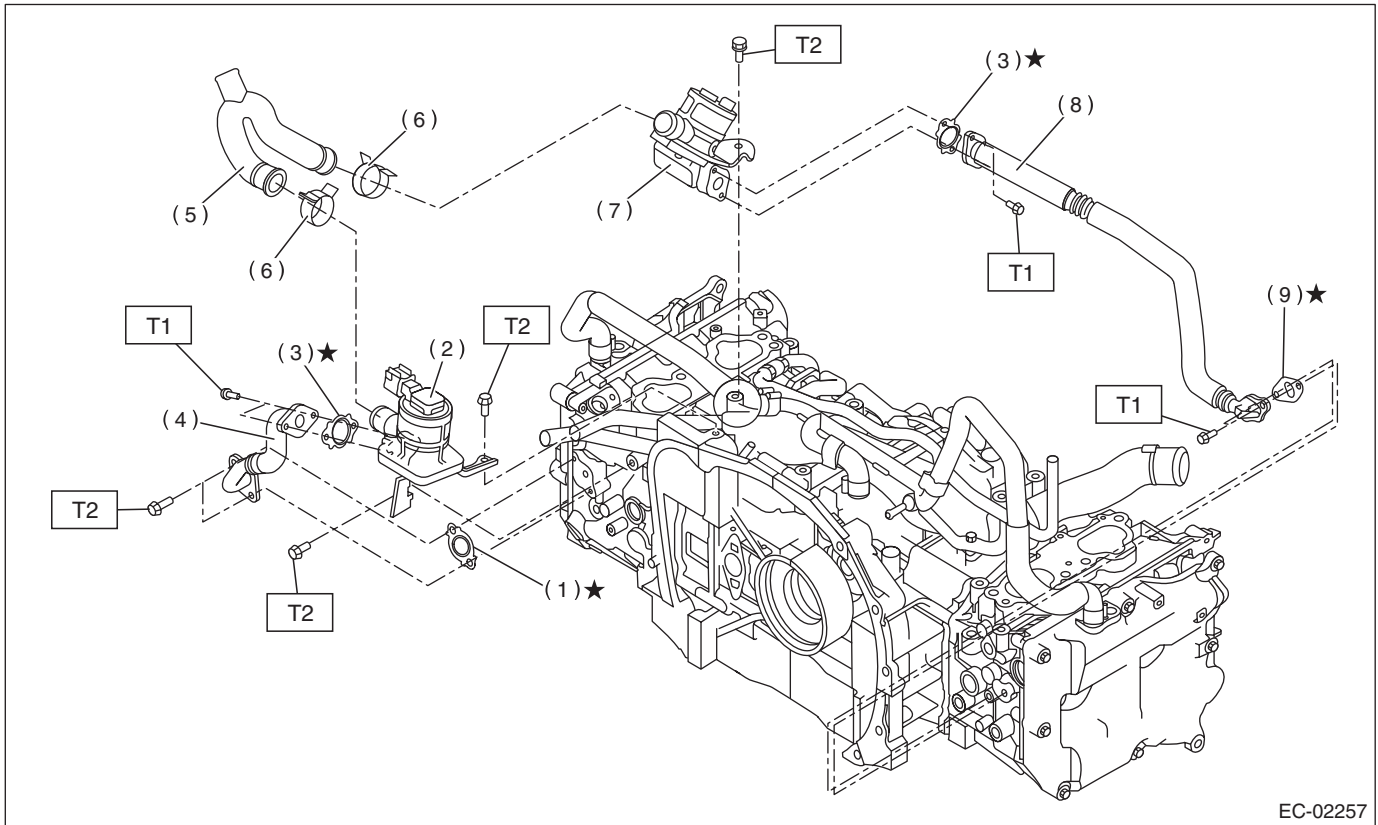
***Tightening torque: N·m (kgf-m, ft-lb)***

***T: 5 (0.5, 3.7)***

# General Description

EMISSION CONTROL (AUX. EMISSION CONTROL DEVICES)

## 2. SECONDARY AIR COMBINATION VALVE



EC-02257

- (1) Gasket
- (2) Secondary air combination valve LH
- (3) Gasket
- (4) Pipe LH

- (5) Air duct
- (6) Clamp
- (7) Secondary air combination valve RH
- (8) Pipe RH

- (9) Gasket

**Tightening torque: N·m (kgf-m, ft-lb)**

**T1: 9 (0.9, 6.6)**

**T2: 19 (1.9, 14.0)**

## General Description

EMISSION CONTROL (AUX. EMISSION CONTROL DEVICES)

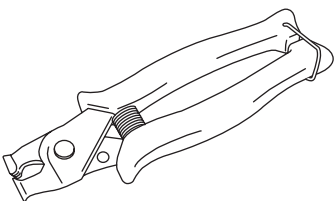
---

### B: CAUTION

- Wear appropriate work clothing, including a cap, protective goggles and protective shoes when performing any work.
- Remove contamination including dirt and corrosion before removal, installation or disassembly.
- Keep the disassembled parts in order and protect them from dust and dirt.
- Before removal, installation or disassembly, be sure to clarify the failure. Avoid unnecessary removal, installation, disassembly and replacement.
- Vehicle components are extremely hot after driving. Be wary of receiving burns from heated parts.
- Be sure to tighten fasteners including bolts and nuts to the specified torque.
- Place shop jacks or rigid racks at the specified points.
- Before disconnecting connectors of sensors or units, be sure to disconnect the ground cable from the battery.

### C: PREPARATION TOOL

#### 1. SPECIAL TOOL

ILLUSTRATION	TOOL NUMBER	DESCRIPTION	REMARKS
 ST18353AA000	18353AA000	CLAMP PLIERS	<ul style="list-style-type: none"><li>• Used for removing and installing the PCV hose.</li><li>• This is a general tool made by the French company CAILLAU. (code) 54.0.000.205</li></ul> To make this easier to obtain in the same way as genuine Subaru parts, it has been provided with a tool number as an ST.