

General Description

FUEL INJECTION (FUEL SYSTEMS)

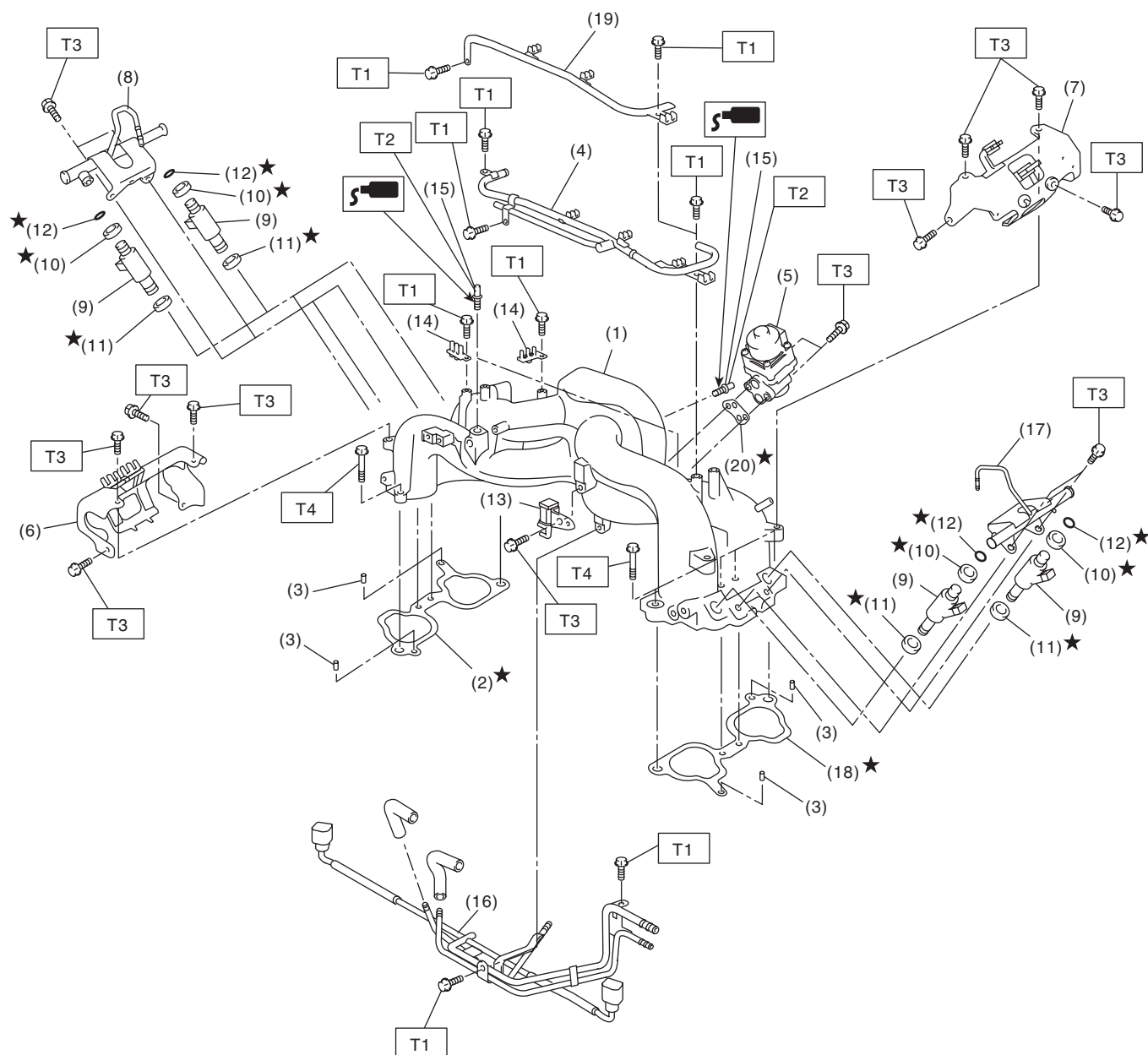
1. General Description

A: SPECIFICATION

Item		Specification
Fuel tank	Capacity	60 ℓ (15.9 US gal, 13.2 Imp gal)
	Locations	Under rear seat
Fuel pump	Type	Impeller
	Shutoff discharge pressure	370 — 677 kPa (3.77 — 6.9 kg/cm ² , 53.6 — 98 psi)
	Discharge rate	105 ℓ (27.7 US gal, 23.1 Imp gal)/h or more [300 kPa, 12 V (3.06 kg/cm ² , 43.5 psi)]
Fuel filter		Intank type

B: COMPONENT

1. INTAKE MANIFOLD



FU-03244

General Description

FUEL INJECTION (FUEL SYSTEMS)

- | | | |
|----------------------------|-----------------------------------|--------------------------------|
| (1) Intake manifold | (10) O-ring | (19) Plug code stay (U5 model) |
| (2) Gasket RH | (11) O-ring | (20) EGR gasket |
| (3) Guide pin | (12) O-ring | |
| (4) PCV pipe (U6 model) | (13) Purge control solenoid valve | |
| (5) EGR valve | (14) Plug cord holder | |
| (6) Fuel pipe protector RH | (15) Nipple (U6 model) | |
| (7) Fuel pipe protector LH | (16) Fuel pipe | |
| (8) Fuel injector pipe RH | (17) Fuel injector pipe LH | |
| (9) Fuel injector | (18) Gasket LH | |

Tightening torque: N·m (kgf-m, ft-lb)

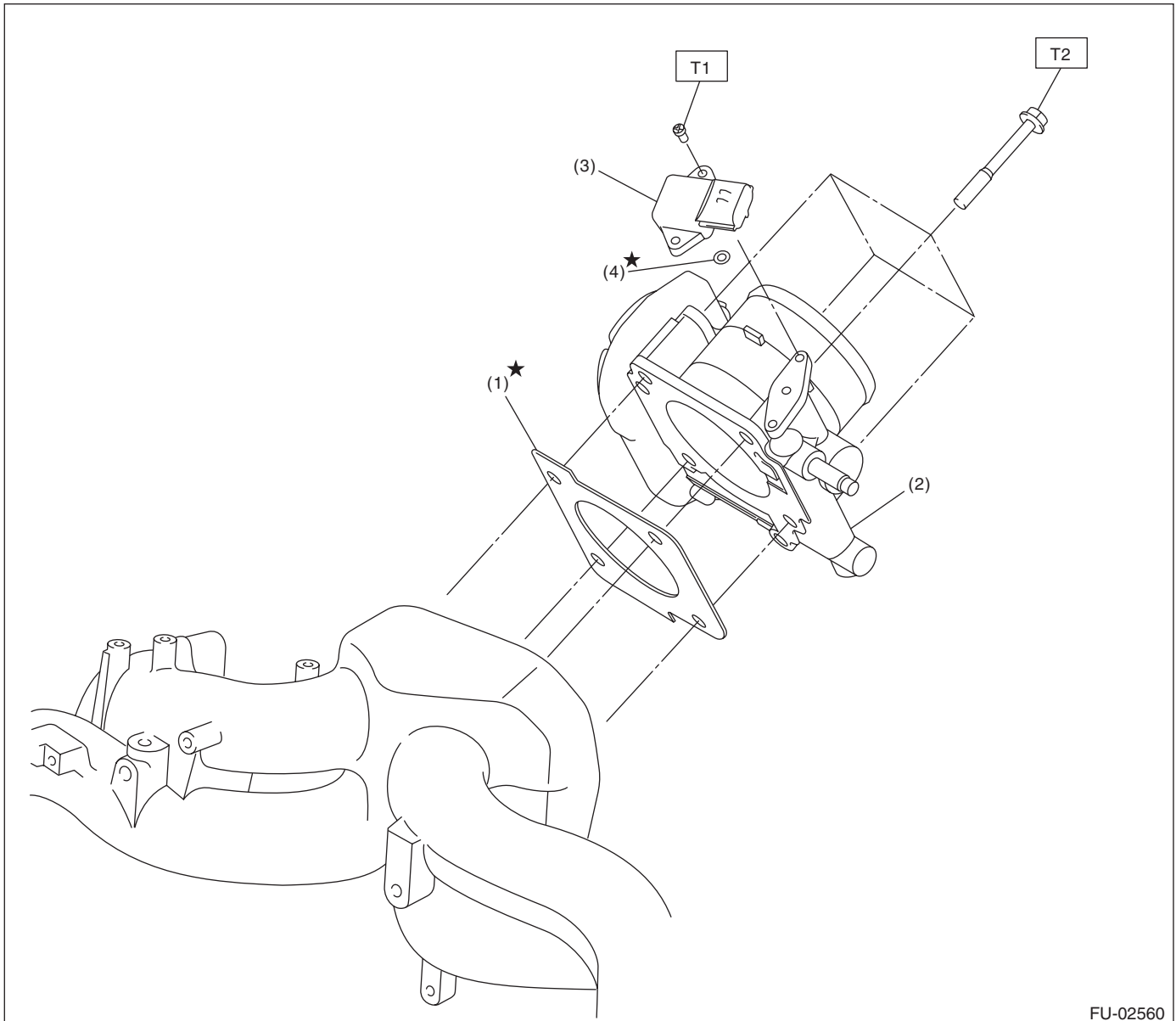
T1: 6.4 (0.65, 4.7)

T2: 17 (1.7, 12.5)

T3: 19 (1.9, 14.0)

T4: 25 (2.5, 18.4)

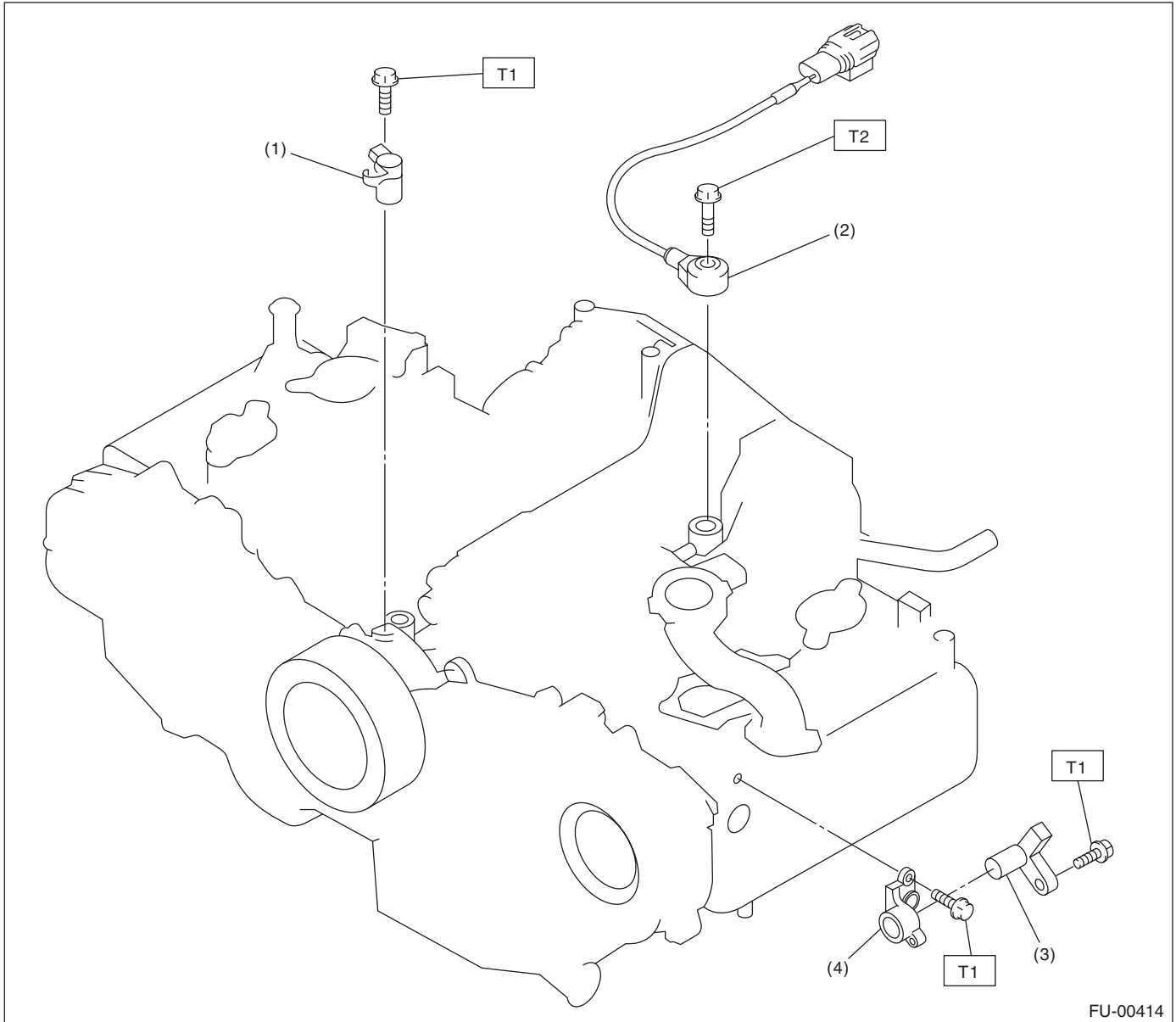
2. AIR INTAKE SYSTEM



FU-02560

- | | | |
|-------------------|---------------------------------------|--|
| (1) Gasket | (3) Manifold absolute pressure sensor | Tightening torque: N·m (kgf-m, ft-lb) |
| (2) Throttle body | (4) O-ring | T1: 2 (0.2, 1.5) |
| | | T2: 8 (0.8, 5.9) |

3. CRANKSHAFT POSITION, CAMSHAFT POSITION AND KNOCK SENSORS



FU-00414

(1) Crankshaft position sensor

(2) Knock sensor

(3) Camshaft position sensor

(4) Camshaft position sensor support

Tightening torque: N·m (kgf-m, ft-lb)

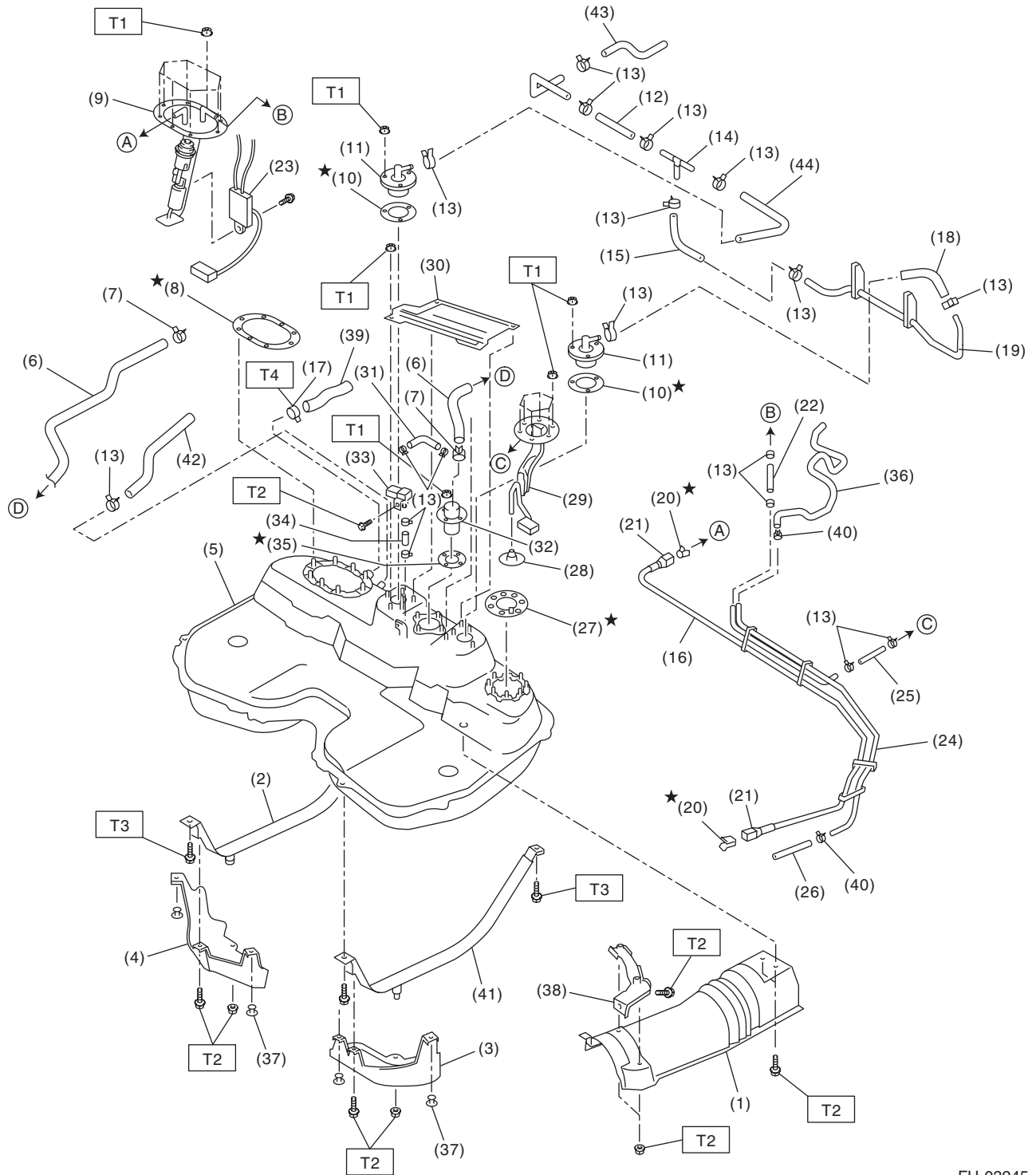
T1: 6.4 (0.65, 4.7)

T2: 24 (2.4, 17.7)

General Description

FUEL INJECTION (FUEL SYSTEMS)

4. FUEL TANK



FU-03245

General Description

FUEL INJECTION (FUEL SYSTEMS)

(1) Heat shield cover	(18) Evaporation hose C	(35) Vent valve gasket
(2) Fuel tank band RH	(19) Evaporation pipe ASSY	(36) Purge hose
(3) Protector LH	(20) Retainer	(37) Clip
(4) Protector RH	(21) Quick connector	(38) Cover bracket
(5) Fuel tank	(22) Jet pump hose A	(39) Filler hose
(6) Canister hose A	(23) Fuel level sensor	(40) Clip
(7) Clamp	(24) Fuel pipe ASSY	(41) Fuel tank band LH
(8) Fuel pump gasket	(25) Jet pump hose B	(42) Evaporation hose F
(9) Fuel pump ASSY	(26) Evaporation hose D	(43) Evaporation hose G
(10) Fuel cut valve gasket	(27) Fuel sub level sensor gasket	(44) Evaporation hose H
(11) Fuel cut valve	(28) Jet pump filter	
(12) Evaporation hose A	(29) Fuel sub level sensor	
(13) Clip	(30) Protect cover	
(14) Joint pipe	(31) Evaporation hose E	
(15) Evaporation hose B	(32) Vent valve	
(16) Fuel delivery tube	(33) Fuel tank pressure sensor	
(17) Clamp	(34) Fuel tank pressure sensor hose	

Tightening torque:N·m (kgf-m, ft-lb)

T1: 4.4 (0.45, 3.3)

T2: 7.4 (0.75, 5.4)

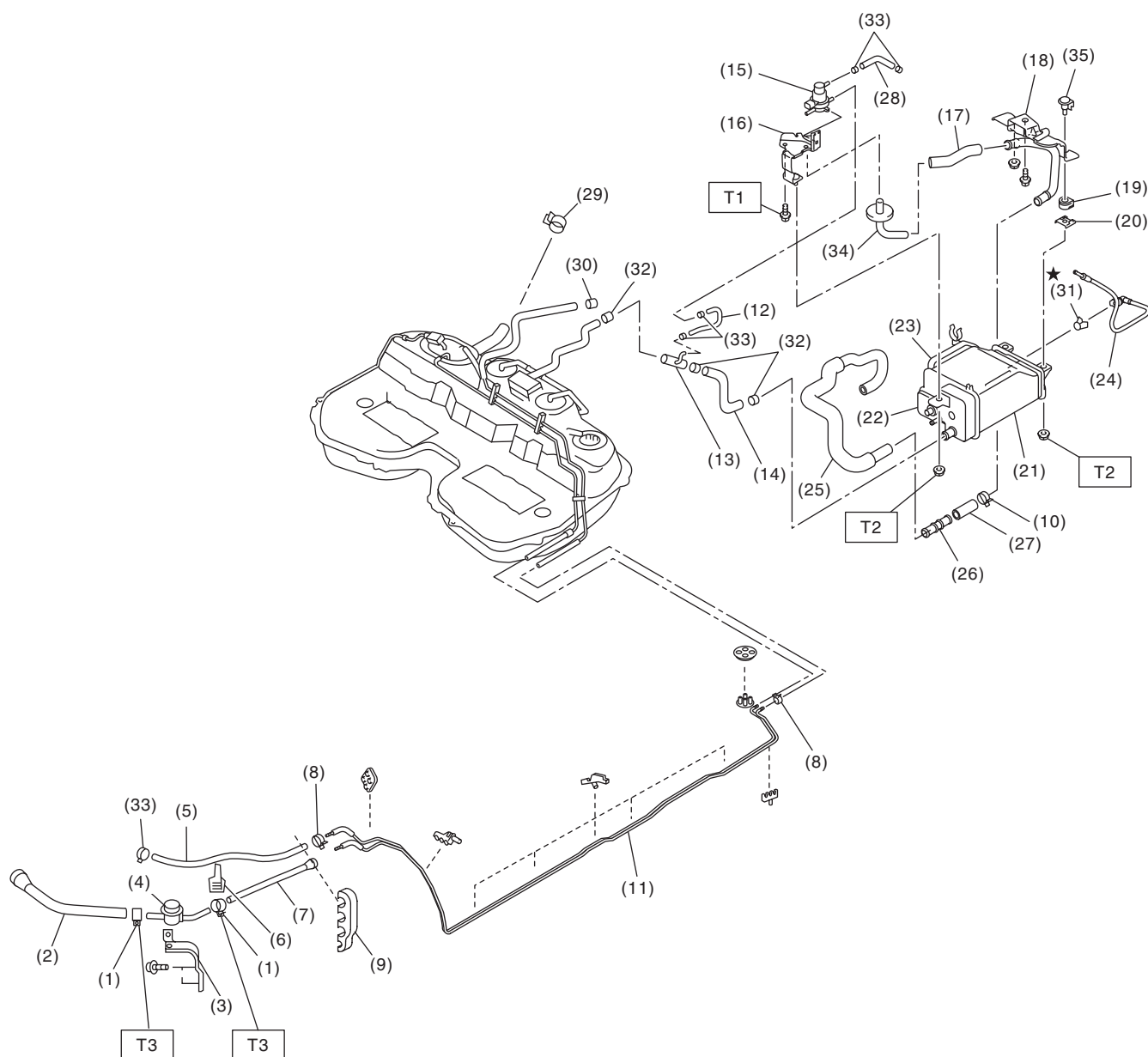
T3: 33 (3.4, 24.3)

T4: 1.96 (0.20, 1.45)

General Description

FUEL INJECTION (FUEL SYSTEMS)

5. FUEL LINE



FU-02988

General Description

FUEL INJECTION (FUEL SYSTEMS)

(1) Clamp	(16) Pressure control solenoid valve bracket	(28) Pressure control solenoid valve hose
(2) Fuel delivery hose A	(17) Drain hose C	(29) Clamp
(3) Fuel damper valve bracket	(18) Canister upper bracket	(30) Clamp
(4) Fuel damper valve	(19) Cushion rubber	(31) Retainer
(5) Evaporation hose A	(20) Canister lower bracket	(32) Clamp
(6) Clip	(21) Canister	(33) Clamp
(7) Fuel delivery hose B	(22) Drain valve	(34) Drain pipe
(8) Clamp	(23) Drain filter	(35) Canister bracket spacer
(9) Clip	(24) Pressure control solenoid valve tube	
(10) Clamp	(25) Drain hose A	
(11) Fuel pipe ASSY	(26) Drain connector	
(12) Evaporation hose B	(27) Drain hose B	
(13) Joint pipe		
(14) Canister hose A		
(15) Pressure control solenoid valve		

Tightening torque:N·m (kgf-m, ft-lb)

T1: 25 (2.5, 18.4)

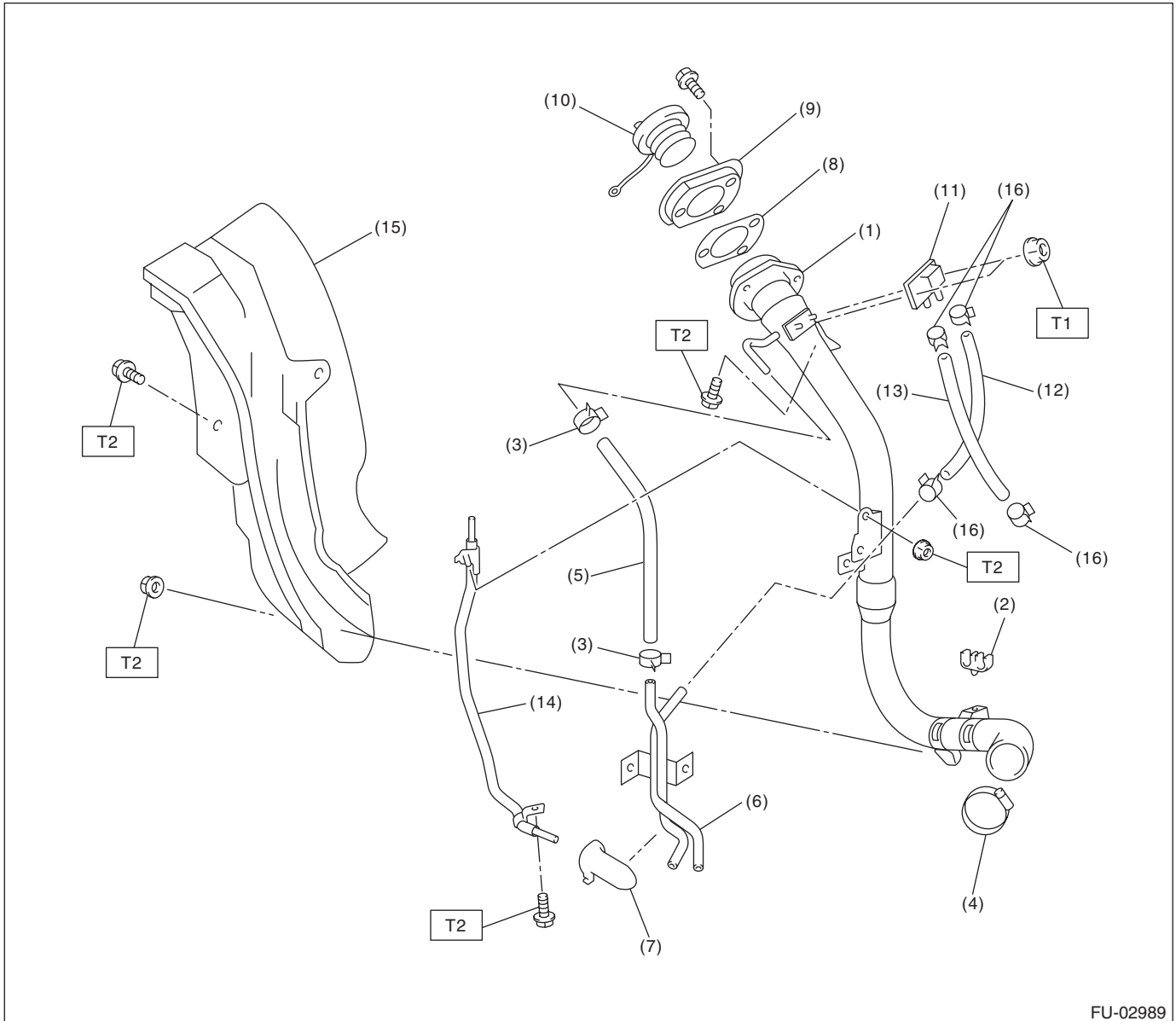
T2: 23 (2.3, 17.0)

T3: 1.25 (0.13, 0.94)

General Description

FUEL INJECTION (FUEL SYSTEMS)

6. FUEL FILLER PIPE



FU-02989

- | | | |
|-----------------------------|-------------------------|---------------------------------|
| (1) Fuel filler pipe ASSY | (8) Filler pipe packing | (15) Fuel filler pipe protector |
| (2) Evaporation hose holder | (9) Filler ring | (16) Clamp |
| (3) Clamp | (10) Filler cap | |
| (4) Clamp | (11) Shut valve | |
| (5) Evaporation hose A | (12) Evaporation hose B | |
| (6) Evaporation pipe | (13) Evaporation hose C | |
| (7) Evaporation pipe holder | (14) Joint pipe | |

Tightening torque: N·m (kgf-m, ft-lb)

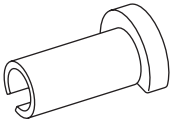
T1: 4.4 (0.45, 3.3)

T2: 7.5 (0.76, 5.5)

C: CAUTION

- Wear appropriate work clothing, including a cap, protective goggles and protective shoes when performing any work.
- Remove contamination including dirt and corrosion before removal, installation or disassembly.
- Keep the disassembled parts in order and protect them from dust and dirt.
- Before removal, installation or disassembly, be sure to clarify the failure. Avoid unnecessary removal, installation, disassembly and replacement.
- Vehicle components are extremely hot after driving. Be wary of receiving burns from heated parts.
- Be sure to tighten fasteners including bolts and nuts to the specified torque.
- Place shop jacks or rigid racks at the specified points.
- Before disconnecting connectors of sensors or units, be sure to disconnect the ground cable from the battery.
- Place “NO FIRE” signs near the working area.
- Prepare a container and cloth to prevent scattering of fuels when performing work where fuels can be spilled. If the fuel spills, wipe it off immediately to prevent from penetrating into floor or flowing out for environmental protection.
- Follow all government and local regulations concerning disposal of refuse when disposing fuel.

D: PREPARATION TOOL

ILLUSTRATION	TOOL NUMBER	DESCRIPTION	REMARKS
 ST42099AE000	42099AE000	CONNECTOR REMOVER	Used for removing the quick connector.