

General Description

VEHICLE DYNAMICS CONTROL (VDC)

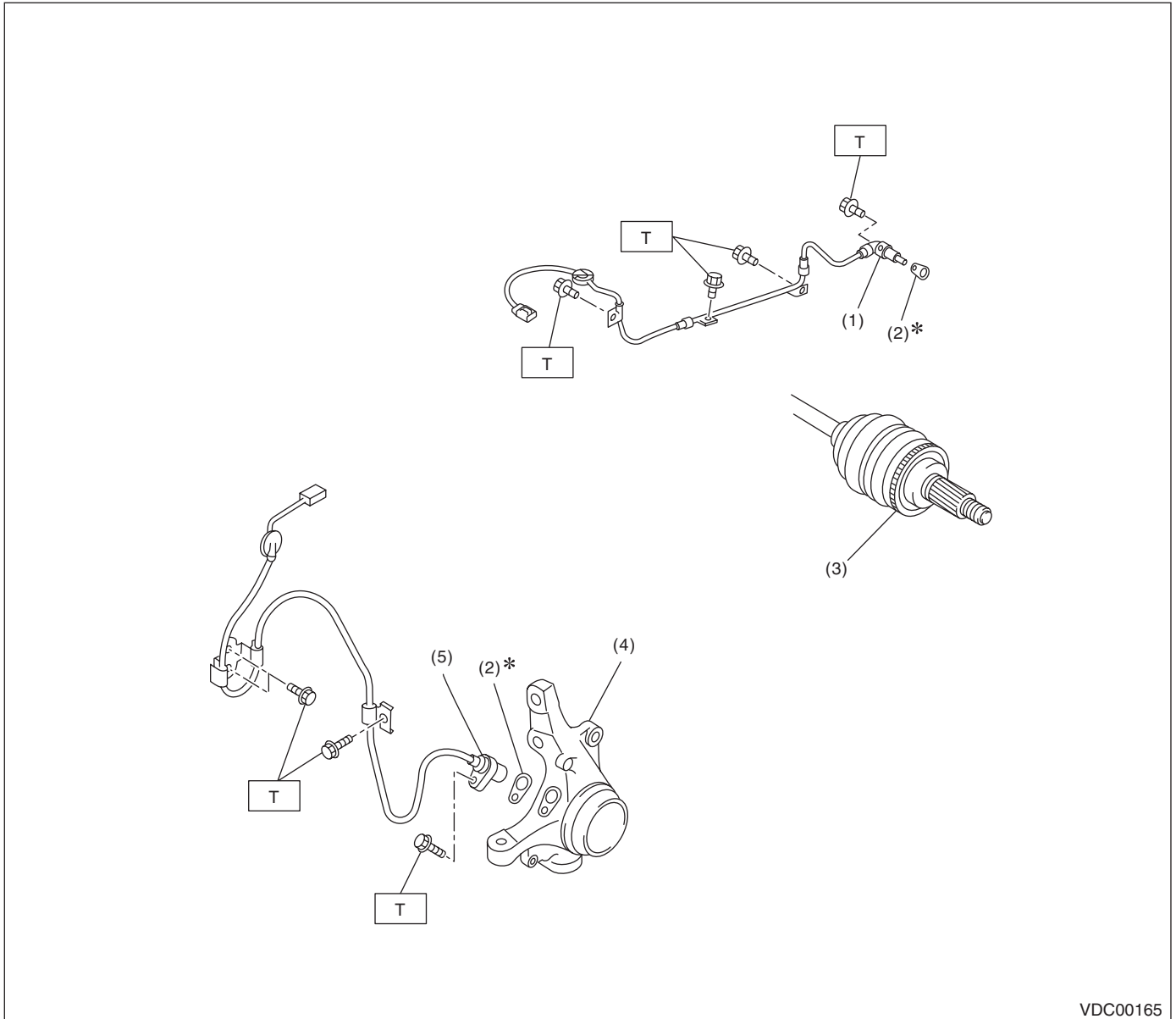
1. General Description

A: SPECIFICATION

Item			Standard value or identification
ABS wheel speed sensor	ABS wheel speed sensor gap	Front	0.3 — 0.8 mm (0.012 — 0.031 in)
		Rear	0.7 — 1.2 mm (0.0276 — 0.0472 in)
	ABS wheel speed sensor resistance	Front/Rear	1.25±0.25 kΩ/1.15±0.115 kΩ
	Identifications of harness (Colors)	Front LH	Pink
		Front RH	Yellow green color
		Rear LH	Yellow
		Rear RH	White
Yaw rate & lateral G sensor	Lateral G sensor voltage		2.5±0.2 V
VDCH/M identification			D3
VDCCM identification			N9

B: COMPONENT

1. ABS WHEEL SPEED SENSOR



VDC00165

- (1) Rear ABS wheel speed sensor
- (2) Adjusting spacer
- (3) Rear tone wheel

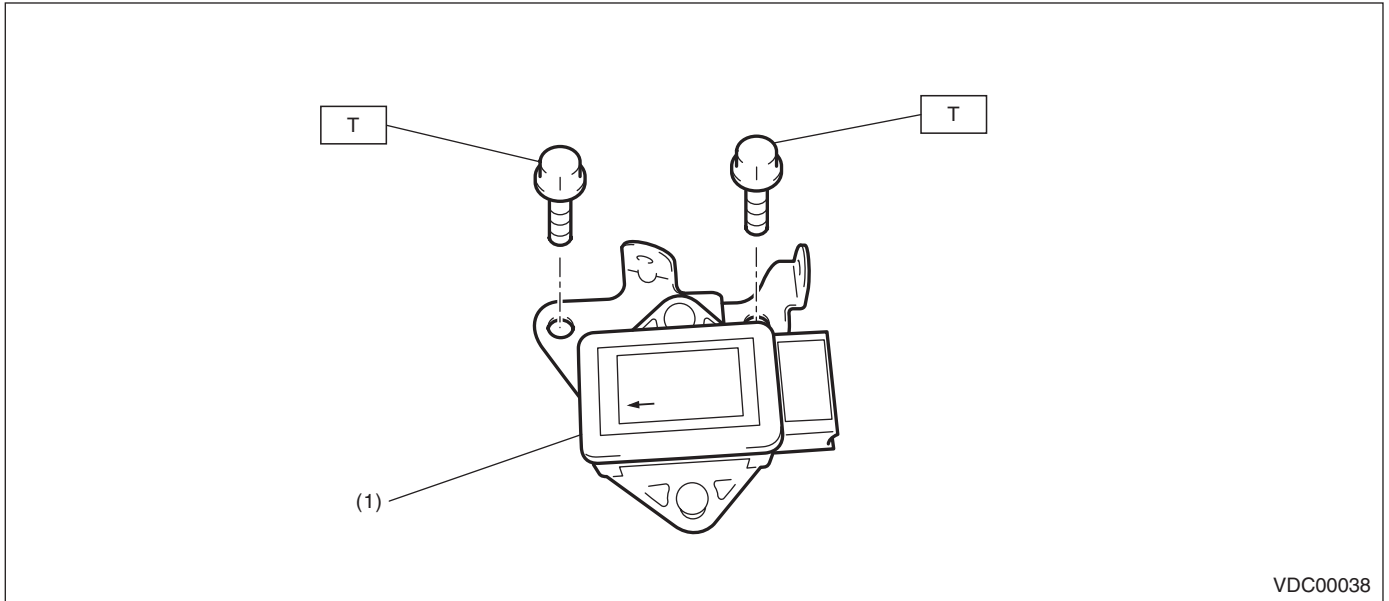
- (4) Housing
- (5) Front ABS wheel speed sensor

Tightening torque: N·m (kgf-m, ft-lb)
T: 33 (3.4, 24.3)

General Description

VEHICLE DYNAMICS CONTROL (VDC)

2. YAW RATE & LATERAL G SENSOR

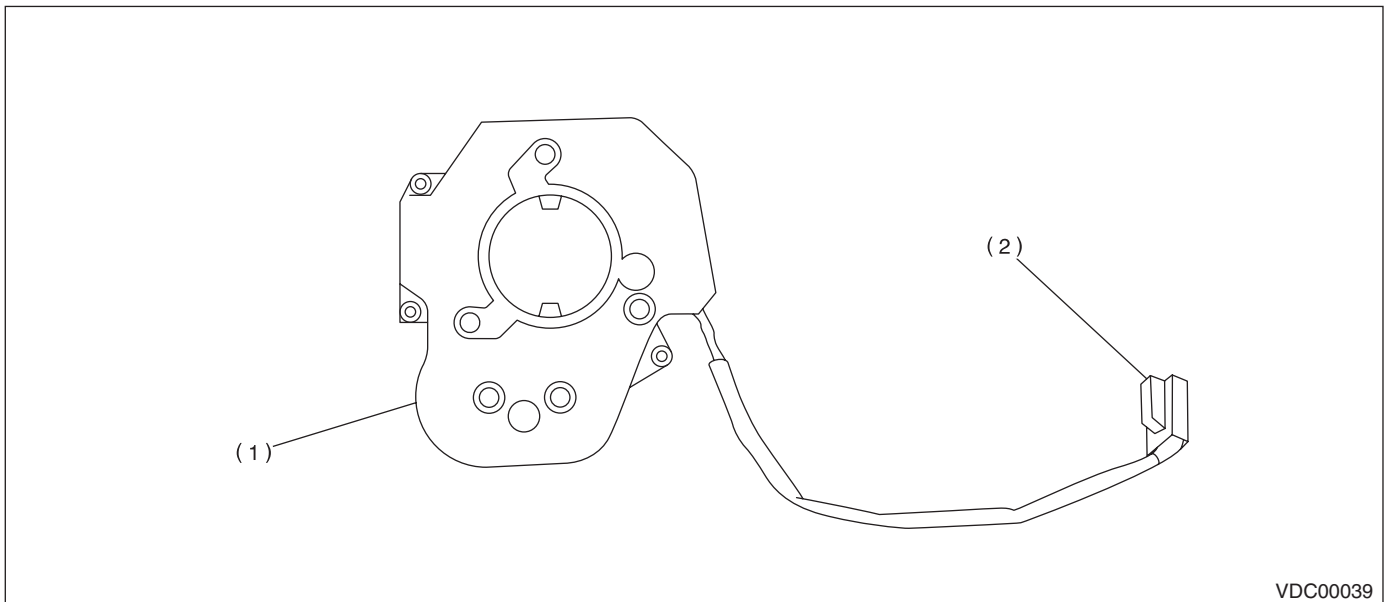


(1) Yaw rate & lateral G sensor

Tightening torque:N·m (kgf-m, ft-lb)

T: 18 (1.8, 13.3)

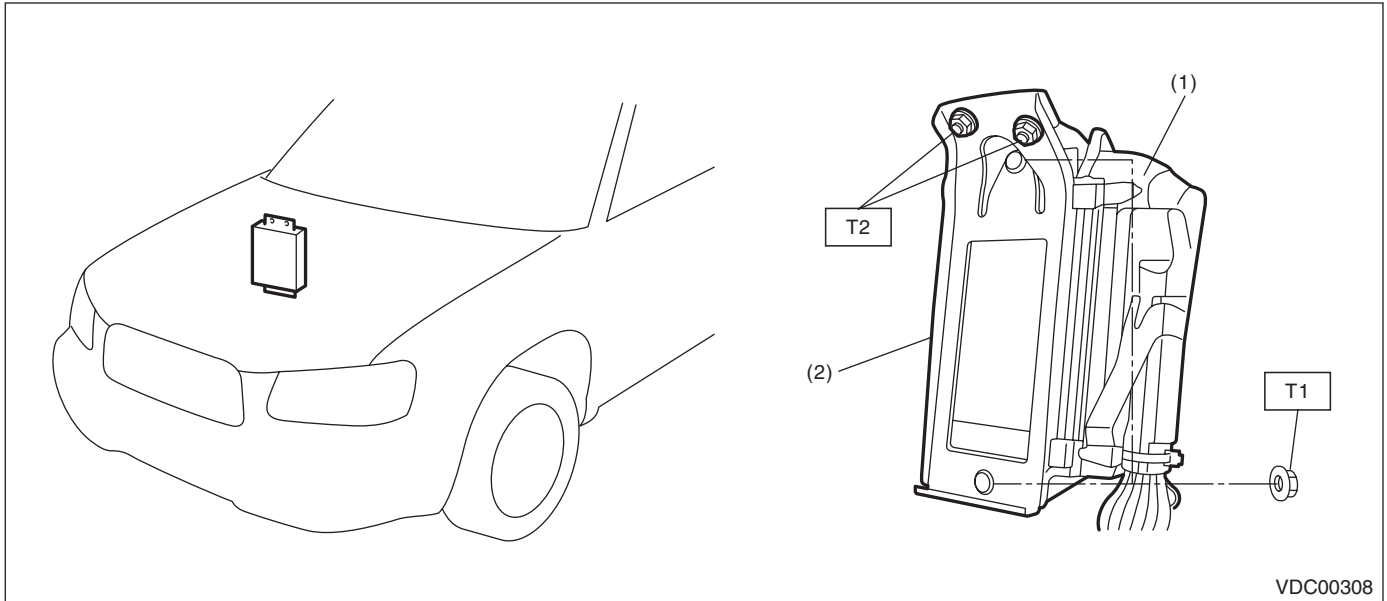
3. STEERING ANGLE SENSOR



(1) Steering angle sensor

(2) Connector

4. VDC CONTROL MODULE (VDCCM)



(1) VDC control module (VDCCM)

(2) Bracket

Tightening torque: N·m (kgf-m, ft-lb)

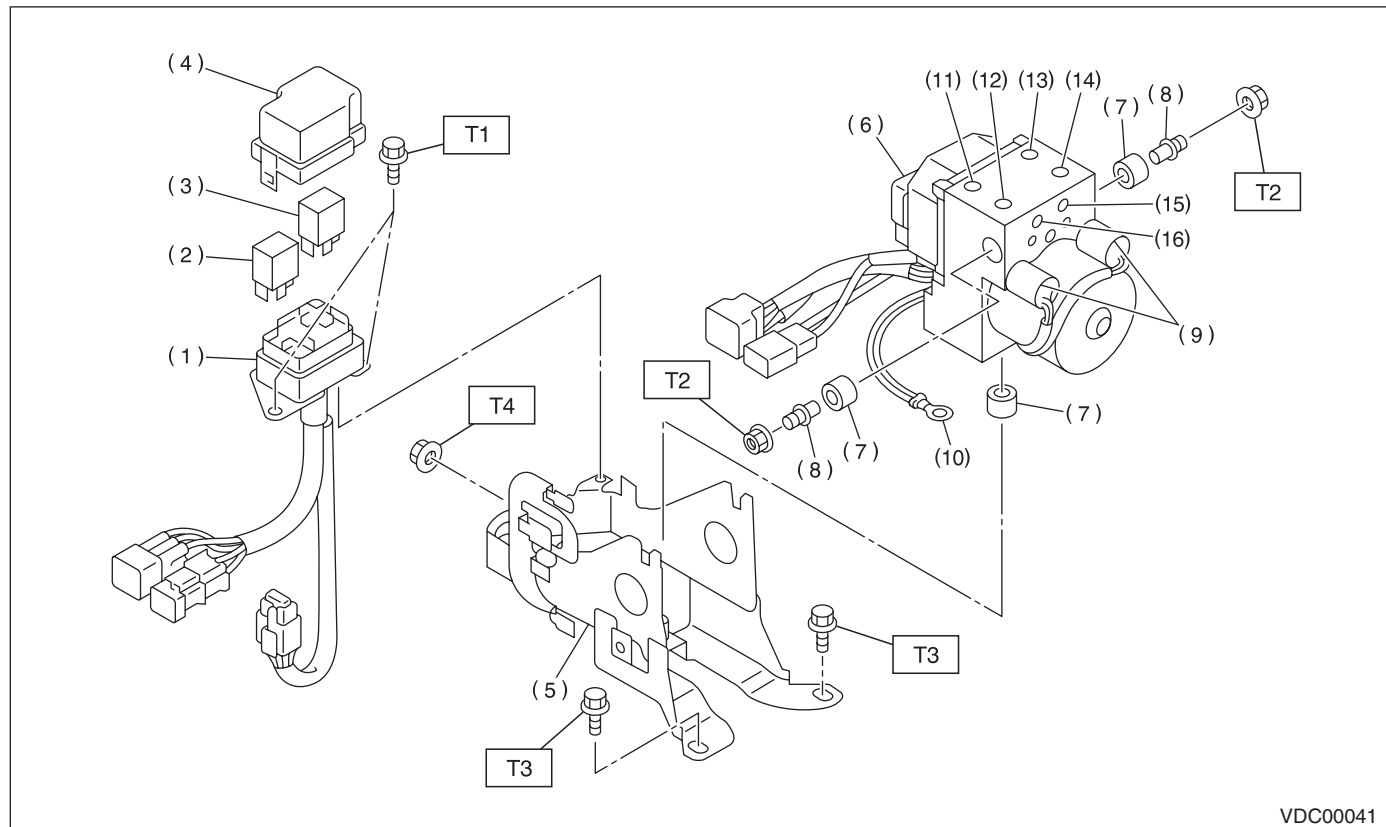
T1: 7.5 (0.76, 5.5)

T2: 18 (1.8, 13.3)

General Description

VEHICLE DYNAMICS CONTROL (VDC)

5. VDC HYDRAULIC CONTROL MODULE (VDCH/M)



- (1) Relay box
- (2) Motor relay
- (3) Valve relay
- (4) Cap
- (5) Bracket
- (6) VDC hydraulic control module (VDCH/M)
- (7) Damper

- (8) Stud bolt
- (9) Pressure sensor
- (10) Ground terminal
- (11) Front LH outlet
- (12) Secondary inlet
- (13) Front RH outlet
- (14) Primary inlet
- (15) Rear LH outlet

- (16) Rear RH outlet

Tightening torque: N·m (kgf-m, ft-lb)

T1: 13 (1.3, 9.6)

T2: 18 (1.8, 13.3)

T3: 33 (3.4, 24.3)

T4: 38 (3.9, 28.0)

CAUTION:

Parts other than the valve relay and motor relay cannot be disassembled.

C: CAUTION

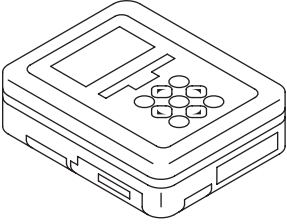
- Wear appropriate work clothing, including a cap, protective goggles and protective shoes when performing any work.
- Remove contamination including dirt and corrosion before removal, installation or disassembly.
- Keep the disassembled parts in order and protect them from dust and dirt.
- Before removal, installation or disassembly, be sure to clarify the failure. Avoid unnecessary removal, installation, disassembly and replacement.
- Be careful not to burn your hands, because each part on the vehicle is hot after running.
- Be sure to tighten fasteners including bolts and nuts to the specified torque.
- Place shop jacks or rigid racks at the specified points.
- Before disconnecting connectors of sensors or units, be sure to disconnect the ground cable from the battery.

General Description

VEHICLE DYNAMICS CONTROL (VDC)

D: PREPARATION TOOL

1. SPECIAL TOOL

ILLUSTRATION	TOOL NUMBER	DESCRIPTION	REMARKS
 ST1B021XU0	1B021XU0	SUBARU SELECT MONITOR III KIT	Used for troubleshooting for the electrical system.

2. GENERAL TOOL

TOOL NAME	REMARKS
Circuit tester	Used for measuring resistance, voltage and current.
Pressure gauge	Used for measuring oil pressure.
Oscilloscope	Used for measuring the sensor.
Steering puller	Used for removing the steering wheel.