

General Description

PARKING BRAKE

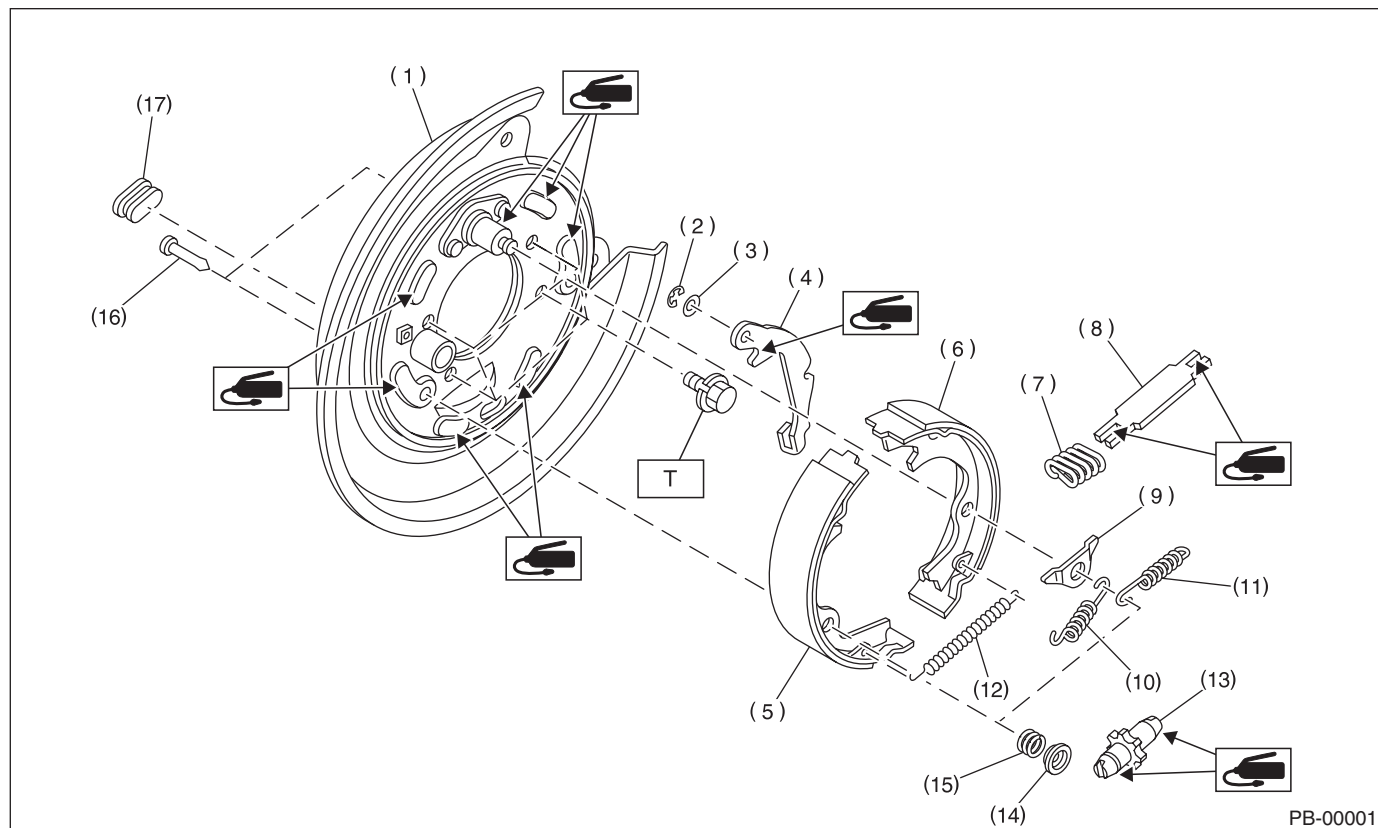
1. General Description

A: SPECIFICATION

Model		Rear drum brake	Rear disc brake
Type		Rear brake mechanical	Mechanical, drum in disc rear brakes
Effective drum diameter	mm (in)	228.6 (9)	170 (6.69)
Lining dimensions (Length × Width × Thickness)	mm (in)	219.4 × 35.0 × 4.1 (8.64 × 1.378 × 0.161)	163.1 × 30.0 × 3.2 (6.42 × 1.181 × 0.126)
Clearance adjustment		Automatic adjusting	Manual adjustment
Lever stroke	notches/N (kgf, lb)	7 — 8/196 (20, 44)	

B: COMPONENT

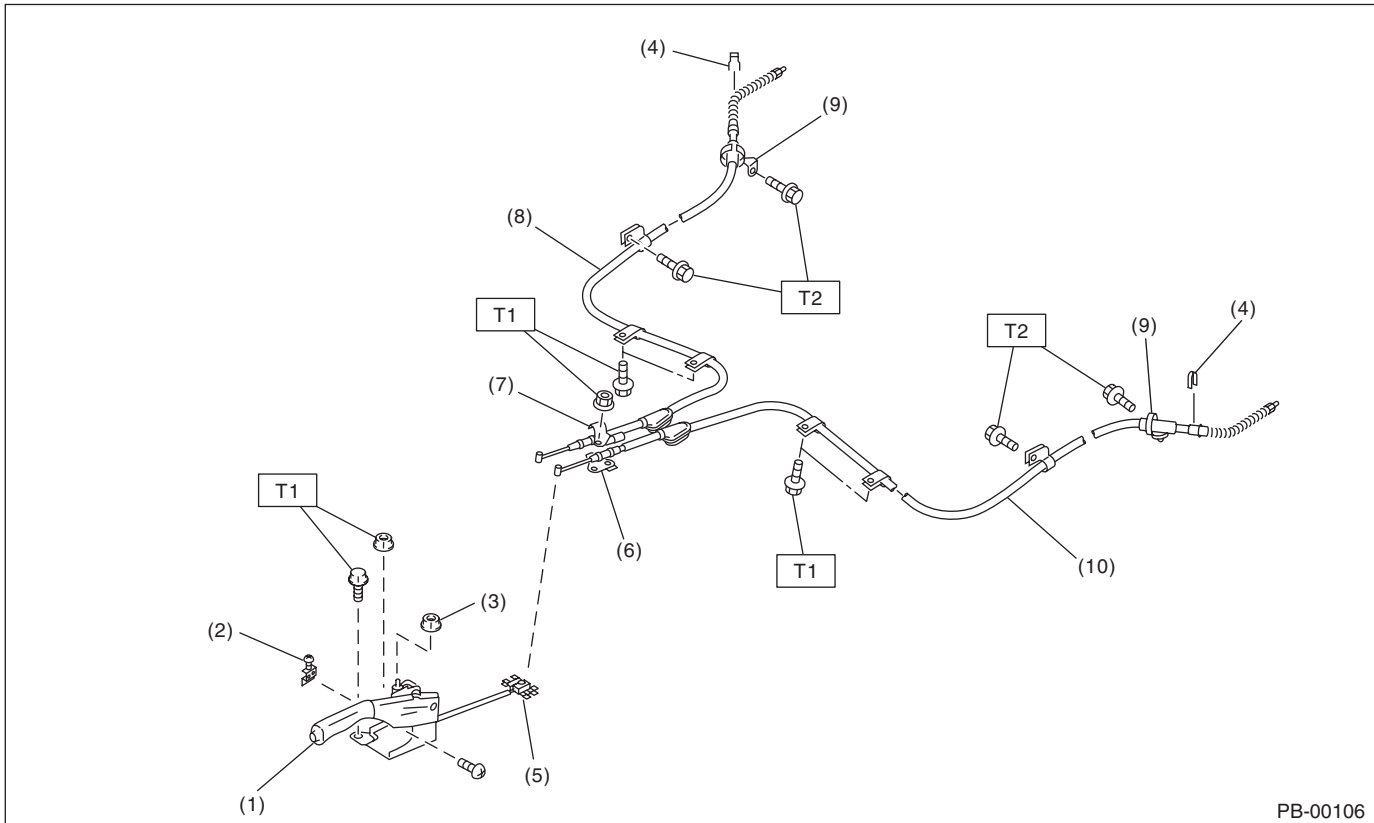
1. PARKING BRAKE (REAR DISC BRAKE)



- | | | |
|------------------------------------|------------------------------|----------------------------|
| (1) Back plate | (8) Strut | (15) Shoe hold-down spring |
| (2) Retainer | (9) Shoe guide plate | (16) Shoe hold-down pin |
| (3) Spring washer | (10) Primary return spring | (17) Adjusting hole cover |
| (4) Lever | (11) Secondary return spring | |
| (5) Parking brake shoe (Primary) | (12) Adjusting spring | |
| (6) Parking brake shoe (Secondary) | (13) Adjuster | |
| (7) Strut spring | (14) Shoe hold-down cup | |

Tightening torque: N·m (kgf·m, ft·lb)
T: 53 (5.4, 39.1)

2. PARKING BRAKE CABLE



PB-00106

- | | |
|----------------------------------------|----------------------------|
| (1) Parking brake lever | (5) Equalizer |
| (2) Parking brake switch | (6) Bracket |
| (3) Self-locking nut | (7) Clamp |
| (4) Clamp (Rear disc brake model only) | (8) Parking brake cable RH |
| | (9) Cable guide |

- (10) Parking brake cable LH

Tightening torque: N·m (kgf-m, ft-lb)

T1: 18 (1.8, 13.0)

T2: 32 (3.3, 23.6)

C: CAUTION

- Wear appropriate work clothing, including a cap, protective goggles and protective shoes when performing any work.
- Before removal, installation or disassembly, be sure to clarify the failure. Avoid unnecessary removal, installation, disassembly and replacement.
- Vehicle components are extremely hot after driving. Be wary of receiving burns from heated parts.
- Use SUBARU genuine grease etc. or equivalent. Do not mix grease etc. of different grades or manufacturers.
- Be sure to tighten fasteners including bolts and nuts to the specified torque.
- Place shop jacks or rigid racks at the specified points.
- Before securing a part in a vise, place cushioning material such as wood blocks, aluminum plate or cloth between the part and the vise.
- Make sure grease does not come into contact with the parking shoes.