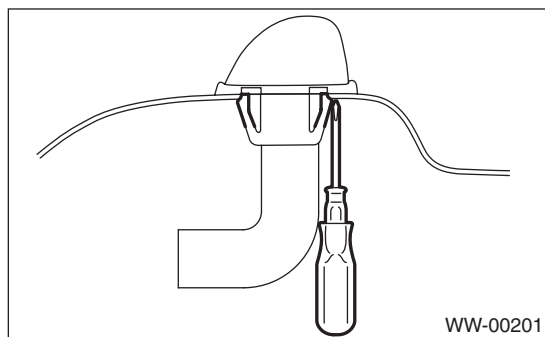


11.Rear Washer

A: REMOVAL

- 1) Remove the rear gate upper trim. <Ref. to EI-46, REMOVAL, Rear Gate Trim.>
- 2) Remove the washer hose from the washer nozzle.
- 3) Push the anchor of the washer nozzle body with a flat tip screwdriver or equivalent, and remove the washer nozzle.



B: INSTALLATION

- 1) Install in the reverse order of removal.
- 2) Adjust the position of the washer liquid sprayer. <Ref. to WW-17, ADJUSTMENT, Rear Washer.>

C: INSPECTION

- Make sure the nozzle and hose are not clogged.
- Make sure the hose is not bent.

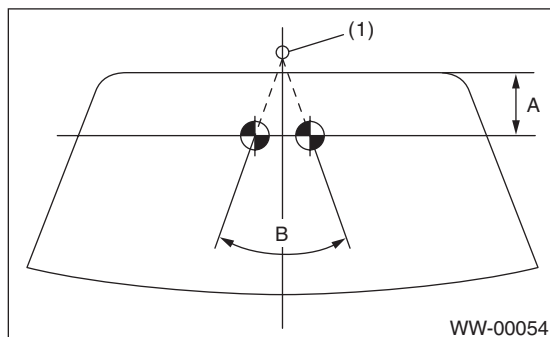
D: ADJUSTMENT

- 1) Turn the wiper switch to OFF position.
- 2) When the vehicle stops, adjust the washer liquid ejection position as shown in the figure.

In ejection position:

A: 35 mm (1.38 in)

B: 72°



(1) Nozzle