

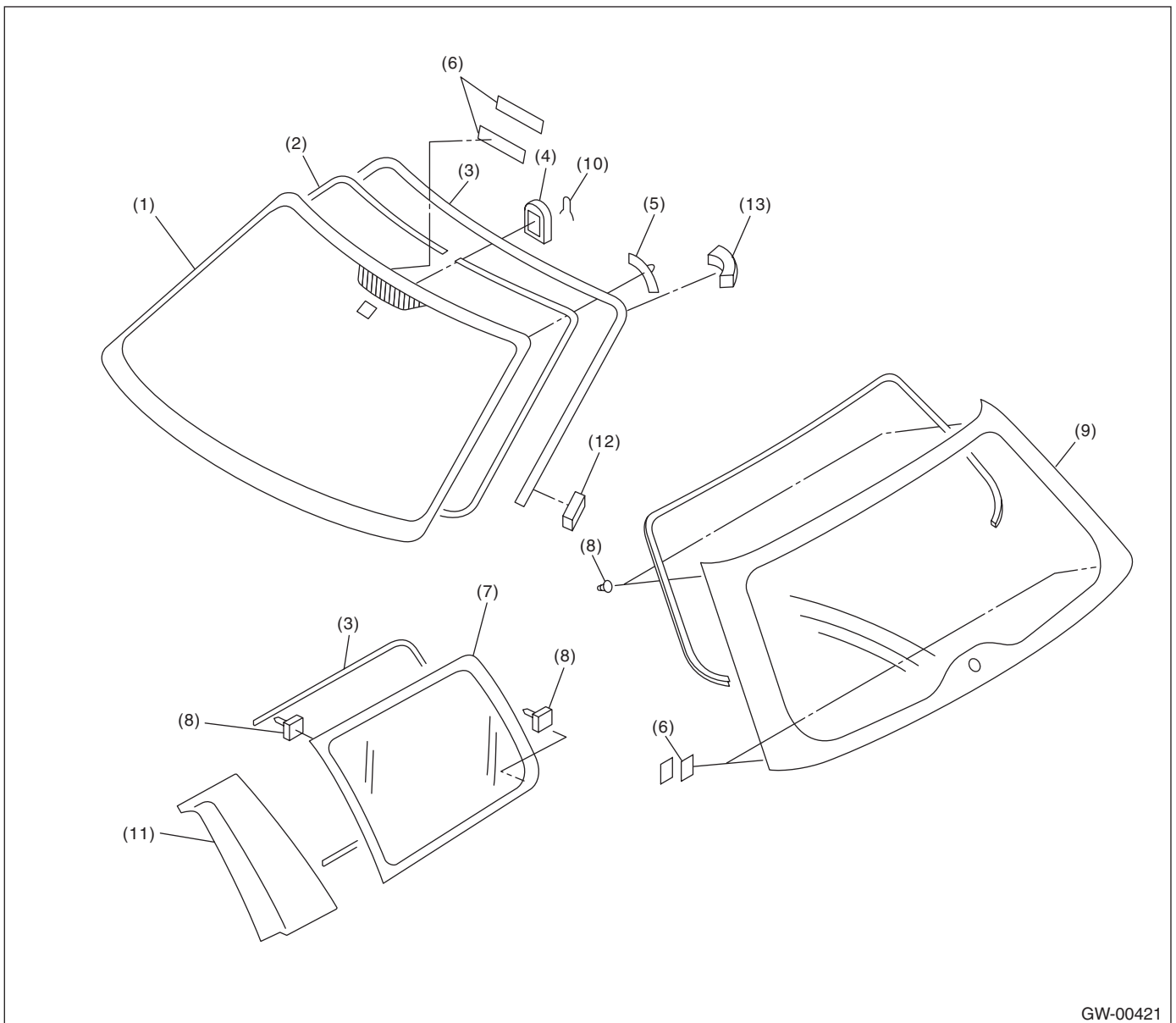
General Description

GLASS/WINDOWS/MIRRORS

1. General Description

A: COMPONENT

1. FIXED GLASS



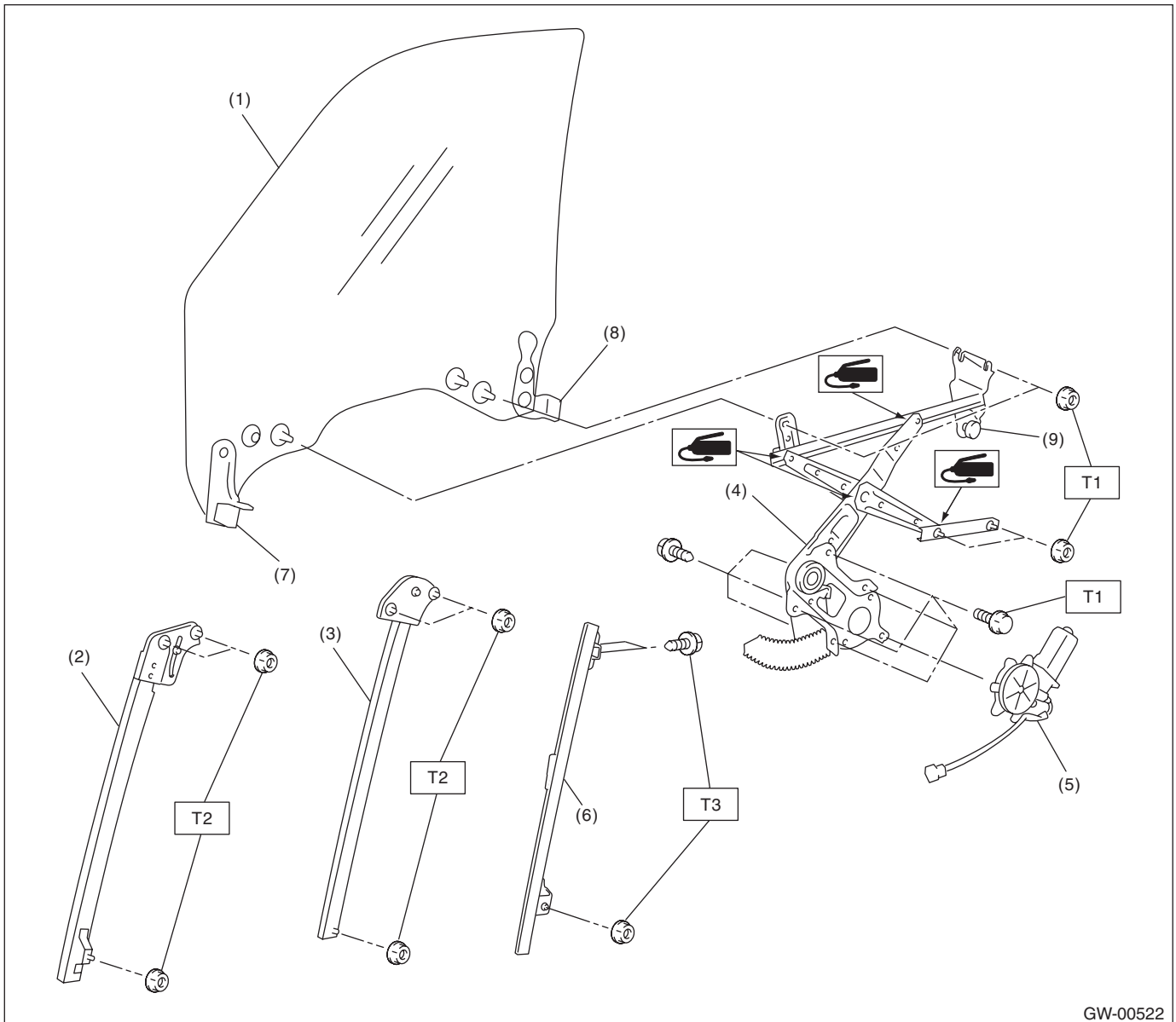
GW-00421

- (1) Windshield glass
- (2) Dam rubber
- (3) Molding
- (4) Rearview mirror mount
- (5) Locating pin

- (6) Fastener
- (7) Rear quarter glass
- (8) Locating pin
- (9) Rear gate glass

- (10) Spring
- (11) Cover C pillar
- (12) Seal A
- (13) Seal B

2. FRONT DOOR GLASS



GW-00522

- | | |
|-----------------------|--------------------|
| (1) Glass | (6) Guide rail |
| (2) Door sash (Front) | (7) Holder (Front) |
| (3) Door sash (Rear) | (8) Holder guide |
| (4) Regulator ASSY | (9) Slider |
| (5) Motor ASSY | |

Tightening torque: N·m (kgf-m, ft-lb)

T1: 7.5 (0.75, 5.4)

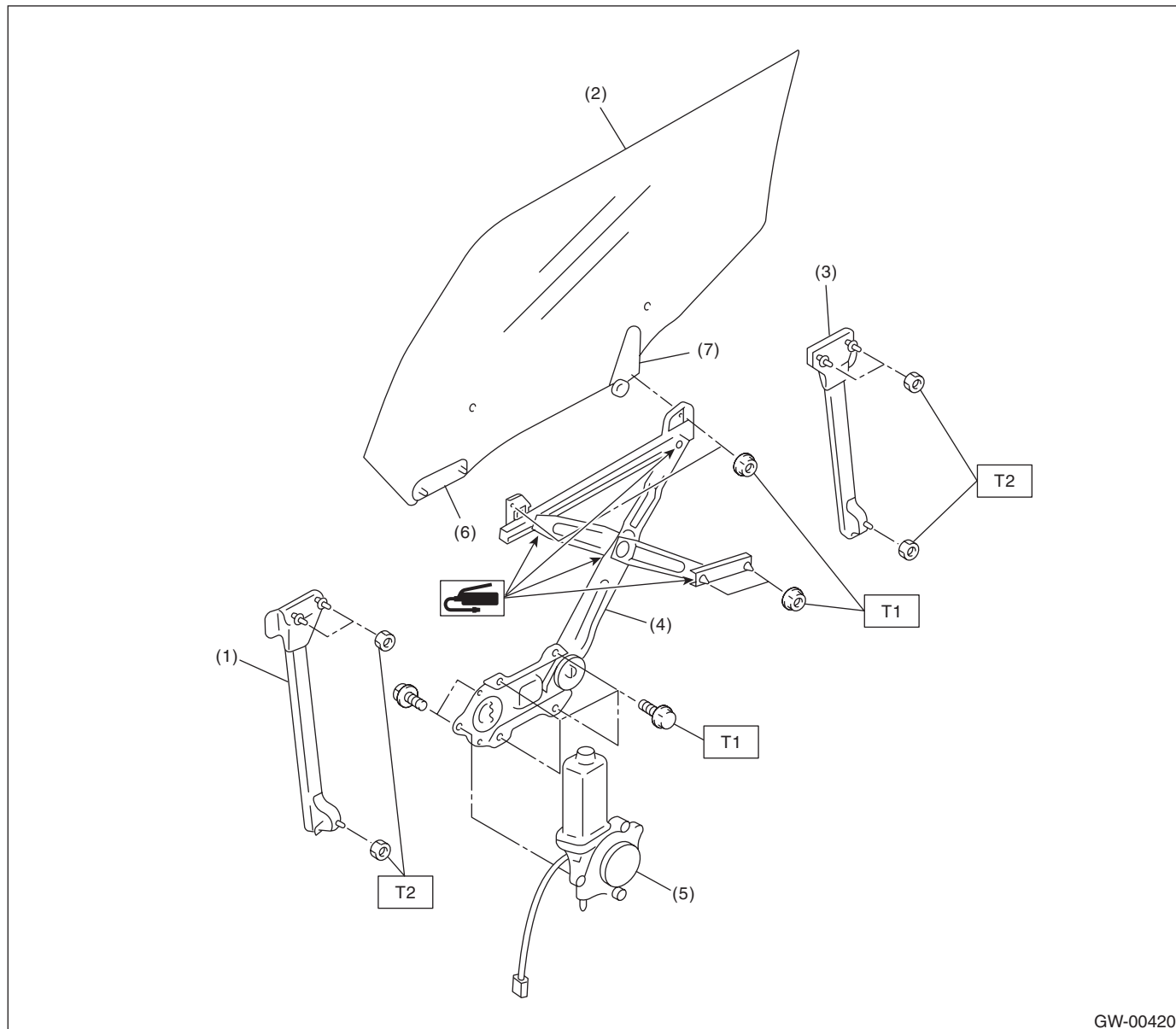
T2: 14 (1.4, 10.3)

T3: 6 (0.6, 4.3)

General Description

GLASS/WINDOWS/MIRRORS

3. REAR DOOR GLASS



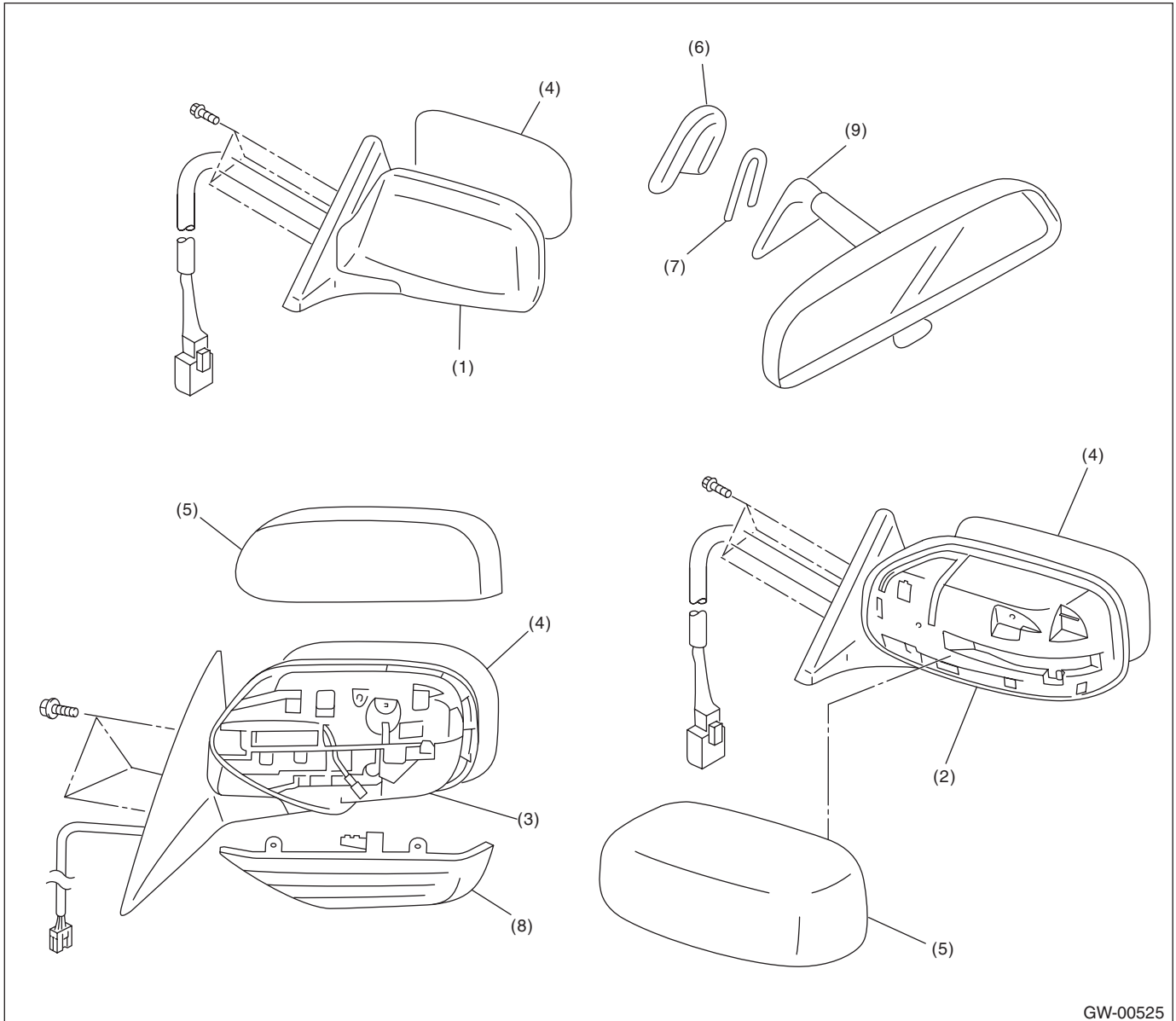
- | | |
|-----------------------|--------------------|
| (1) Door sash (Front) | (5) Motor ASSY |
| (2) Glass | (6) Holder (Front) |
| (3) Door sash (Rear) | (7) Holder (Rear) |
| (4) Regulator ASSY | |

Tightening torque: N·m (kgf-m, ft-lb)

T1: 7.5 (0.75, 5.4)

T2: 14 (1.4, 10.3)

4. MIRROR



GW-00525

- | | | |
|--|---------------|----------------------------|
| (1) Outer mirror (Large size) | (4) Mirror | (7) Spring |
| (2) Outer mirror (Standard size) | (5) Scalp cap | (8) Side turn signal light |
| (3) Outer mirror (with side turn signal light) | (6) Mount | (9) Rearview mirror |

B: CAUTION

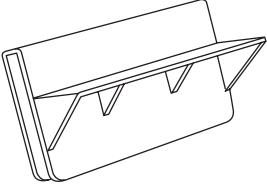
- When electrical connectors are disconnected, always conduct an operational check after connecting them again.
- Avoid impact and damage to the glass.

General Description

GLASS/WINDOWS/MIRRORS

C: PREPARATION TOOL

1. SPECIAL TOOL

ILLUSTRATION	TOOL NUMBER	DESCRIPTION	REMARKS
 ST61299AE000	61299AE000	SPACER	Used for adjusting the upper end position of door glass. (Glass thickness: 5 mm (0.197 in))

2. GENERAL TOOL

TOOL NAME	REMARKS
Circuit tester	Used for checking voltage and continuity.
Piano wire	Used for removing the window glass.
Windshield glass knife	Used for removing the window glass.