

Gregory's
AUTOMOTIVE

No 501

SUBARU

**SEDAN
WAGON
COUPE
Oct 1979-94**

2WD & 4WD 1979-1994

**UTILITY
1982-94**

**1600 OHV
1800 OHV
1800 OHC**

**Except EFI &
turbo models**



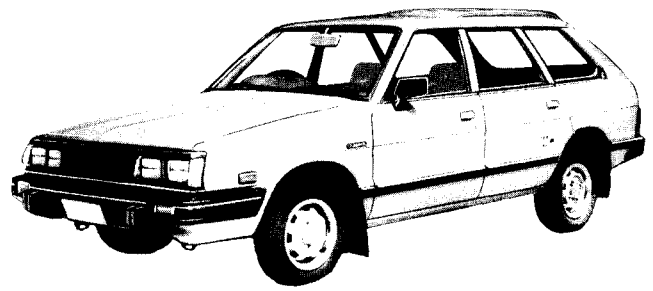
EXPANDED 4WD SERVICE & REPAIR MANUAL

**GREGORY'S AUTOMOTIVE PUBLICATIONS
SERVICE AND REPAIR MANUAL No. 501**

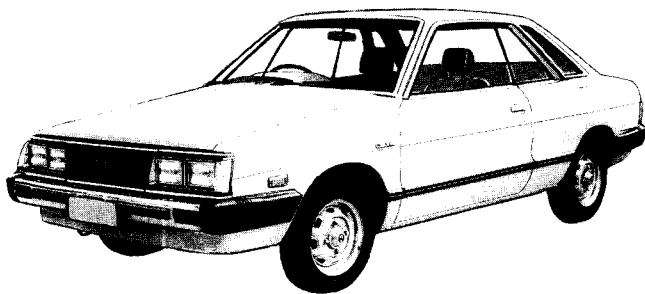
**SUBARU
1600-1800cc**



1980 Sedan



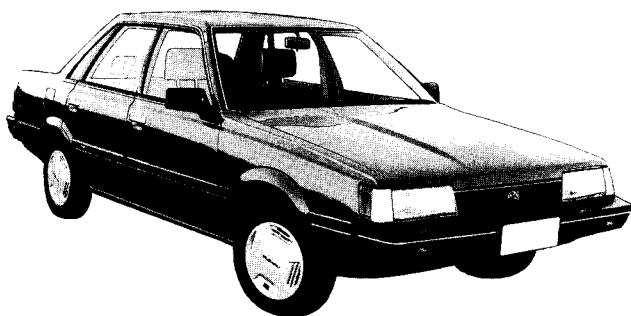
1983 Touring Wagon



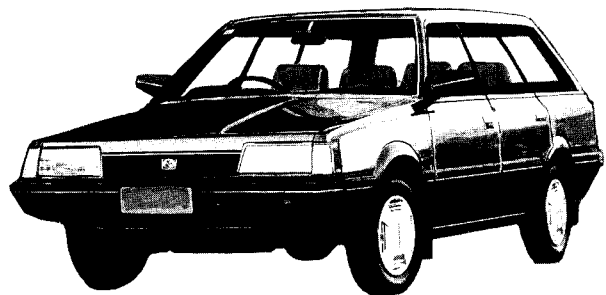
1982 Coupe



1984 Utility



1985 Sedan



1985 Station Wagon

**GREGORY'S AUTOMOTIVE PUBLICATIONS
SERVICE AND REPAIR MANUAL No 501**

SUBARU

1600-1800cc

FOUR AND TWO WHEEL DRIVE

1979-1994

The information in this manual is derived from the latest models available for our workshop research, and other available sources at the times of preparing the editions which first covered the models listed above. While every effort has been made in preparing later editions to ensure that subsequent modifications by the manufacturer have been included, vehicles and parts vary in manufacture, sometimes even from specifications published by the manufacturer. Accordingly, no guarantee or warranty is given that all such modifications are included in this manual.

While every precaution is taken to ensure the accuracy of the contents, no responsibility can be accepted for any misinterpretation or misapplication of the repair procedures described nor, apart from any warranties or conditions which might be implied by the Trade Practices Act and similar State and Territory Laws, can any liability be accepted for any errors or omissions in the text and/or illustrations.

**GREGORY'S AUTOMOTIVE PUBLICATIONS
SYDNEY**



GREGORY'S AUTOMOTIVE PUBLICATIONS
Service and Repair Manual No. 501

Published by
Gregory's Automotive Publications
a division of Universal Press Pty Ltd
Sydney, Australia

Edited and photographed at the company's
Sydney editorial and research centre
1 Waterloo Road
Macquarie Park 2113
NSW
AUSTRALIA

Printed in Australia by
Lithocraft Graphics

First Edition: © Gregory's Automotive Publications a division of
Universal Press Pty Ltd — July 1987

Second Edition: © Gregory's Automotive Publications a division of
Universal Press Pty Ltd — December 1988

First Reprint: May 1989	Fourth Reprint: March 1991
Second Reprint: December 1989	Fifth Reprint: October 1991
Third Reprint: July 1990	Sixth Reprint: June 1992

Third Edition: © Gregory's Automotive Publications a division of
Universal Press Pty Ltd — February 1993

First Reprint: October 1993	Fourth Reprint: March 1995
Second Reprint: January 1994	Fifth Reprint: September 1995
Third Reprint: September 1994	

ISSN 0727-6117
ISBN 0 855 66717 6

All rights reserved. Gregory's Automotive Publications, a division of Universal Press Pty Ltd, is the owner of the copyright subsisting in this publication. Other than permitted by the Copyright Act, no part of this publication may be reproduced, copied or transmitted, in any form or by any means (electronic, mechanical, microcopying, photocopying, recording, storage in a retrieval system or otherwise), without the prior written permission of Gregory's Automotive Publications, a division of Universal Press Pty Ltd. Universal Press Pty Ltd will vigorously pursue any breach of its copyright.

Use of the material in this publication is protected by copyright. Access to material may be negotiable upon request. Please contact Gregory's Automotive Publications on (02) 857 3700.

ACKNOWLEDGEMENT

Gregory's Automotive Publications wish to thank Subaru Australia for their help in various aspects of preparing this manual.