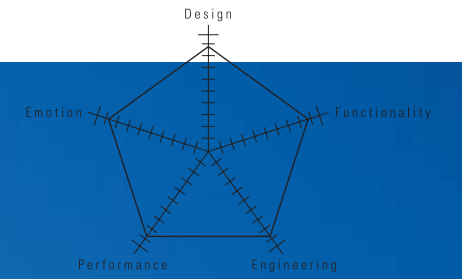


**LEGACY**





## The Perfect Balance

### Subaru Symmetrical AWD

The symmetry of SUBARU BOXER Horizontally-Opposed Engine design is perfectly matched by that of the drivetrain's layout. Subaru has spent over 30 years refining both, and developing innovative suspension technologies to complement them. All three work in harmony: the engine's low centre of gravity enhancing All-Wheel Drive (AWD) ability, in turn allowing sophisticated suspensions to deliver precise feel and handling. That's why you'll always feel at one with it, wherever you drive.

**SYMMETRICAL AWD**





***Advanced technology for  
an increasingly demanding world.***

*In the city or way out beyond, the driving environment can  
change suddenly and unexpectedly.*

*That's why the Subaru brand represents*

*three distinct promises, interwoven in one.*

*First, radical new thinking creates high technology advances.*

*Then, a passionate feel for engineering translates them  
into useable reality.*

*In turn, whenever you drive a Subaru,*

*you appreciate the appeal of multi-purpose practicality.*

*Think. Feel. Drive. Three elements in a unique equation which  
sums up Subaru's vision for a world of different demands.*

*They are epitomised in the latest Legacy*

*– a high-tech machine built to tame the wilds of nature.*

*But they also apply across the whole Subaru range,*

*supported as always by a wealth of FIA WRC-bred experience.*



*- Petter Solberg & Phil Mills  
2003 FIA World Rally Championship for Drivers & Co-Drivers*

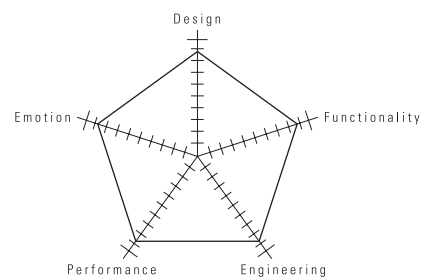


### The natural successor.

Charisma and sporty character are, as ever, to the fore. Styled for tomorrow and superbly equipped as standard, here is a shape and spirit which breathes new life into the definitive appeal of Legacy. Dynamic performance and looks attract the sensual side. But at the same time, this is a highly intelligent choice. By focusing on reducing weight all round, you get better performance and fuel consumption, too.







2.5i

2.5i

**Ride in style, arrive in comfort.**

With its wide track, long wheelbase and incredible interior space the Legacy Station Wagon delivers an amazingly agile, yet practical package. Comfortable ride and confident handling are a given. This perfect

balance of function, performance and styling means you'll travel stress-free, and be noticed – wherever your journey takes you.

Comforting thoughts.



An overall sense of everything being in the right proportion is fundamental to the emotive attraction of Legacy. You'll feel at one with the exterior styling, of course. You'll identify readily with the image it projects, and what it says about your personality.

Look deeper, and there's the reassurance of the brand values and build quality that are synonymous with Subaru. Each and every detail contributes to your comfort, whenever you take your seat inside.



### The dynamics of sporty driving.

The Legacy Sedan is beautifully evolved for the future world of driving. Involvement, stimulation for the senses and the practicalities of purist aerodynamics are matched with weight reduction all round – to make this the optimum car for the 21st century. Naturally, there's the unmistakable sporty note from the exhaust to remind you of its heritage.





Sensual styling always stands out.

The smooth lines that characterise the Legacy Sedan and are echoed in the Station Wagon derive from careful attention to cool, sharp, purposeful packaging. Linking the cabin seamlessly to a high

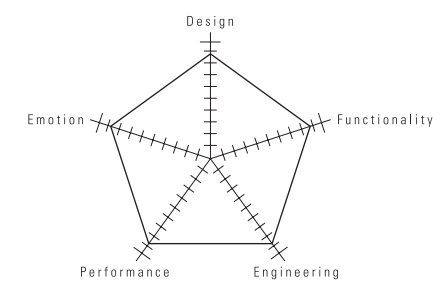
trunk deck style emphasises the dynamic sweeping side aspect of the Sedan, while a swooping low front nose and distinctive front face says everything you need to know about serious sporting appeal.



2.5i



3.0R







### Living the high life.

Nothing's better suited to the urban lifestyle than the Legacy Sedan. The top of the range 3.0R spec.B model has a 6-cylinder engine mated to a 6-speed manual transmission which combined with its clean, lean looks and consummate comfort, is the way to travel the big city. The sporty, sensual feel of every driving moment is to be enjoyed – even when you're sitting in traffic. Listen to the rumbling exhaust – experience the slick, smooth gear changes – and remember that as soon as the road clears, you're in command of a car that can deliver the ultimate driving satisfaction.

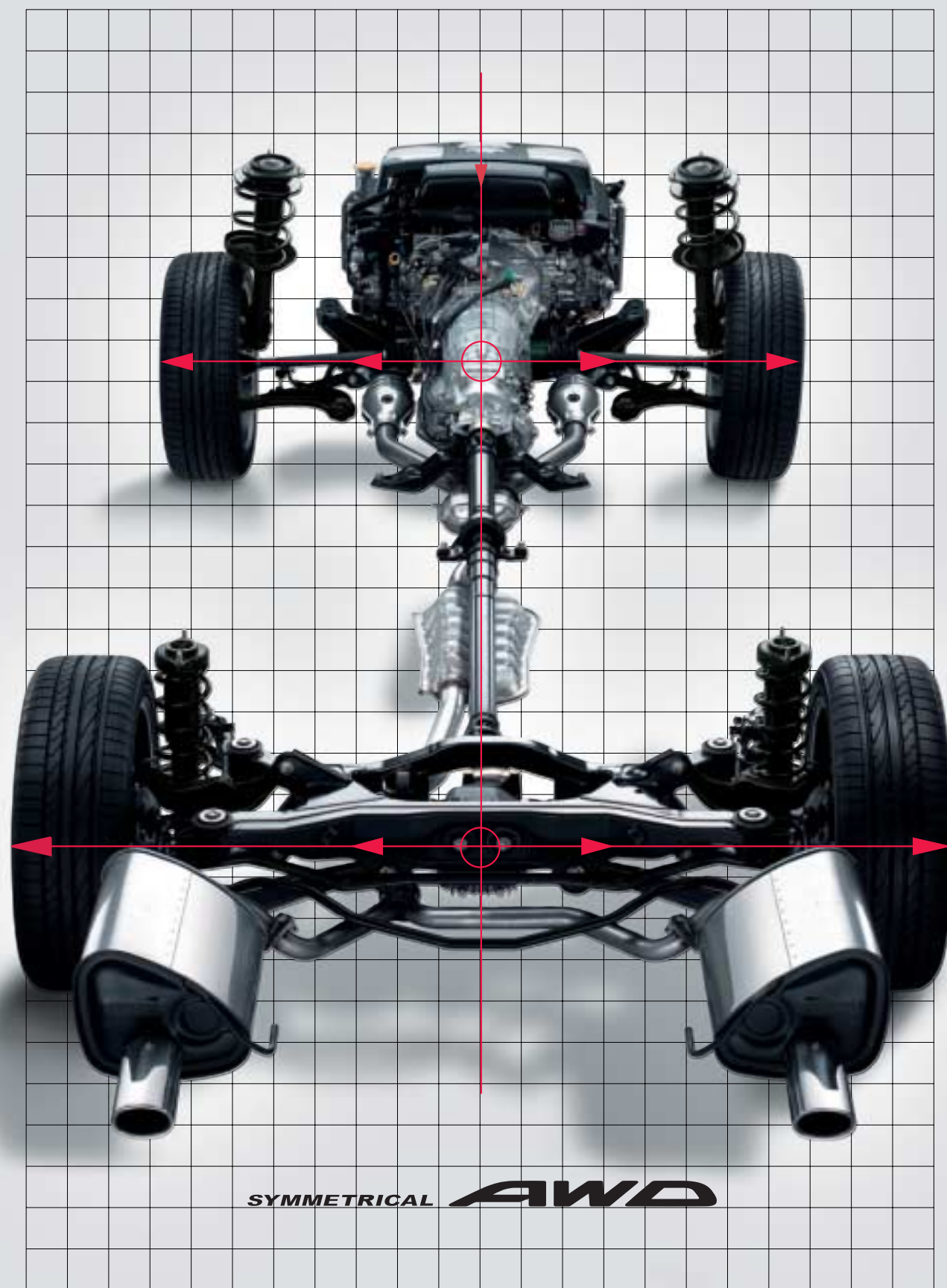


### Full to capacity.

Wherever you're going, rest assured that anyone travelling behind will admire the svelte rear looks of the Legacy Station Wagon. But its beauty is much more than skin deep. The striking looks hide the versatility of 60/40 split rear seats, so you can take on awkward loads as easily as five people and all their luggage. Or, fold the back seats flat to take whatever you need, whatever your destination. It's all designed to make living easier.





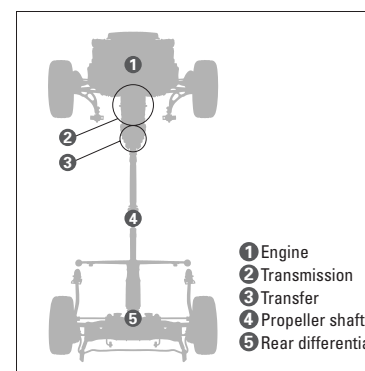


# SYMMETRICAL AWD

The value of the mechanism called Subaru Symmetrical AWD is recognised by the world.

## The feeling of total compatibility.

What could possibly have driven Subaru on a quest to think differently about car design for more than three decades? Why persevere with a combination of SUBARU BOXER Horizontally-Opposed Engines and totally linear drivetrain layout when everyone else seemed to favour more conventional approaches? The reason is simple. Two high technology thoughts that work together to produce results and whose potential has only been exploited by Subaru. It's all about a perfect marriage of rhyme, rhythm and reason. All the main components, from engine to transmission, transfer to propeller shaft and rear differential, are arranged in line, with no doglegs or deviations – with a laterally symmetrical layout. Coupled with jewel-like engineering, Subaru brings together all the benefits to give neutral balance and poise, for ideal weight distribution, front to rear and side to side.



## SUBARU BOXER



Lightweight and compact Horizontally-Opposed Engines are intrinsically smoother and more efficient than In-line or V-type Engines. That's the reason why Subaru has carefully thought through the idea. Superb rotational balance means less vibration, because the pistons mutually counteract the lateral vibration. Obviously, the flatter design also means the engine can sit much further down within the chassis, which gives a lower centre of gravity and total compatibility with the AWD layout and suspension systems.



# DRIVE SUBARU



## Explore the envelope.

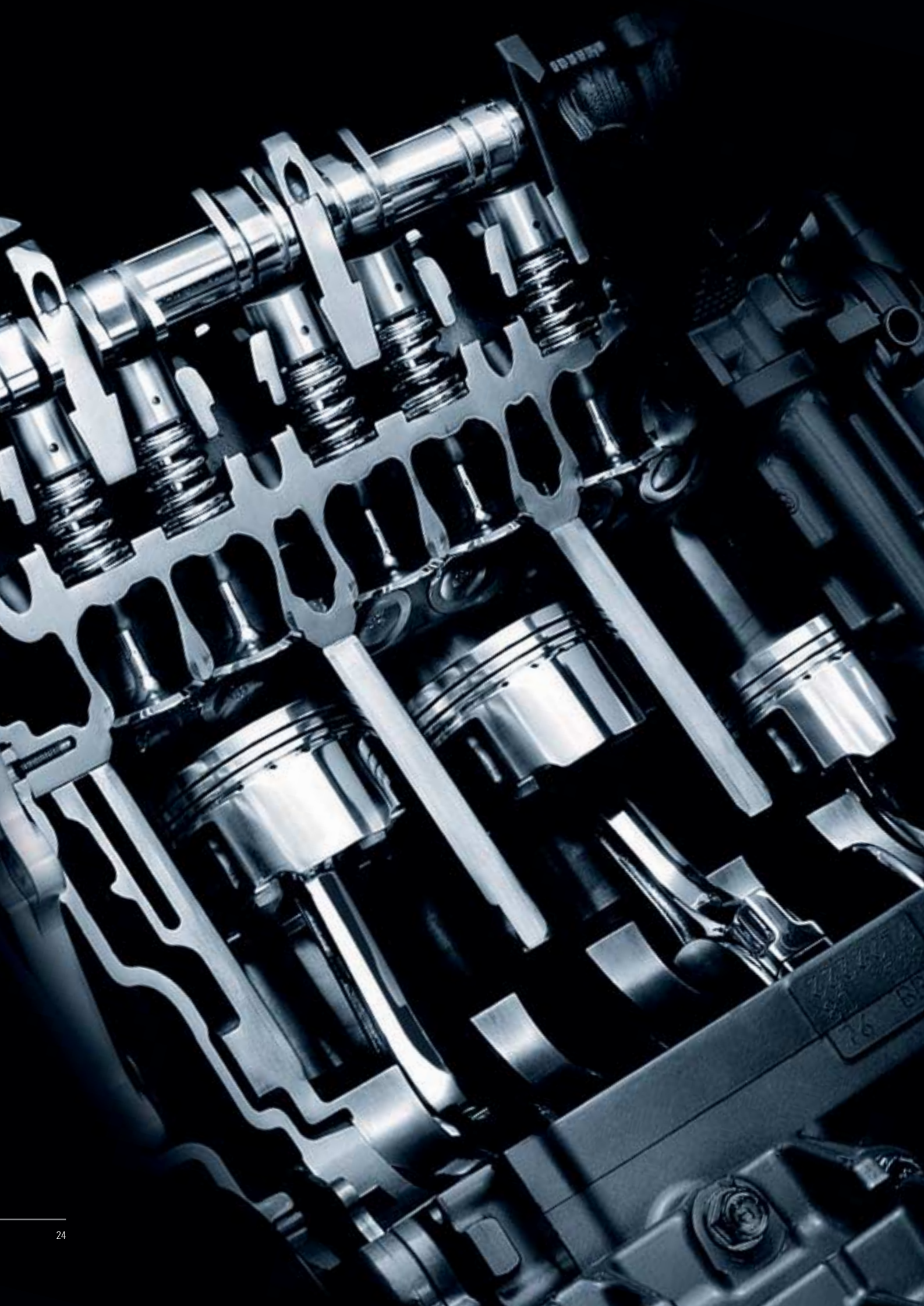
Drive the difference that forward-thinking technology and engineering bring to Legacy.

Because everything is perfectly resolved and ordered, there's a unique symmetry of weight distribution and refinement on the road. So, when you're on the school run in a downpour, Legacy's perfect weight balance gets you safely there, certain in the knowledge that secure handling and tenacious grip will bring security and peace of mind – whatever the road conditions. It's almost as if the car can anticipate your thoughts, providing a feeling of stability and safety that enhances the real



joy of driving. Everything is direct, involving and yet exciting – without the undesirable threats of sudden loss of grip or traction.





# the POWER

Advanced engine technologies.

*The SUBARU BOXER Horizontally-Opposed Engines in all Subaru models have been refined and refined again over the years. But nothing can replace the fundamental smoothness of this flat, 180 degree configuration. The laws of physics mean that opposing pistons cancel out vibration dramatically – unlike with In-line or V-type Engines. The result is an inherent, seamless progress throughout the rev range, with the accent on silky torque delivery, and of course, that unique burbling exhaust sound that's the true sign of a Subaru.*



## Equal length exhausts

The newly-designed exhaust system reduces the exhaust resistance to enhance engine output and torque. Moreover, it functions as a musical instrument to make a clear, new SUBARU BOXER SOUND – the sound is further enhanced by ultra-low back pressure twin mufflers on the 3.0-litre DOHC and 2.5-litre SOHC.



Exhaust manifold

## More advanced technologies

Quality should not be compromised for power, that's why Subaru strives to ensure that each aspect is equally balanced. The technology, casting high strength sintered metal into aluminium supports, is an example of Subaru's pride in quality. Even subtle engine noise which varies depending on the engine temperature can be eliminated by this technology.



Steel casted journal

## SUBARU BOXER 3.0-litre engine

Subaru has worked hard on developing Horizontally-Opposed 6-cylinder engines for many years, because the merit from the extra cylinders is much larger than the other type of engines, i.e., much more compact than In-line engine and much smoother than V-type engine. And what's more, it is simply a beautiful machine. Performance, torque and accelerator response are enhanced, through an Electronic Throttle Control System, as are the Active Valve and Variable Valve Lift Control Systems. The overall effect is one of supreme, effortless drivability.



## SUBARU BOXER 2.0 / 2.5-litre engine

Again, Subaru has raised standards of performance, fuel efficiency and environmental protection with this refined engine. That is why such an intelligent system like an equal length exhaust system and an advanced Electronic Throttle Control System are equally given to all engines including 2.0-litre and 2.5-litre. On top of that, the 2.5-litre strikes a perfect balance between the three fundamental objectives with a highly efficient intake manifold and ultra-low back pressure twin mufflers.





# the SHIFT

Transmission technologies trained for the job.

*Building on the inherent virtues of All-Wheel Drive and a totally linear drivetrain layout, the manual and automatic transmissions in the latest Legacy range have been created to bring smooth and precise gear changes in all on and rough-road situations. With Legacy, differentials and torque split systems are perfectly matched to deliver precise performance and traction – whenever and wherever you need it.*

## **6-speed Manual Transmission for 3.0R spec.B (6MT)**

This close-ratio gearbox delivers a rich vein of torque and seamless shifts right throughout the rev range, from low to high. Specifically developed to make full use of this engine's performance, it rewards you with that uniquely



exhilarating exhaust note every time you press the throttle, perfectly completing the overall sporting driving experience.

## **5-speed Manual Transmission (5MT)**

Seamless, quieter gear changes are the priority with this transmission. A dual mass flywheel smoothes away any unwanted jerkiness and noise, to give a high quality feel, especially when driving in urban areas.



## **Electronically-controlled 5-speed Automatic Transmission for 3.0R (SPORTSHIFT\* E-5AT)**

Subaru's Electronically-Controlled 5-speed Automatic Transmission (E-5AT) is intelligent, lightweight and compact, using a high efficiency, direct hydraulic control system. It has been specifically developed to maximise the pleasure



of driving and has employed the close gear ratio set for the best possible shift control feel, while the precise shift control program helps to improve the fuel efficiency. The pleasure of driving is even enhanced by the SPORTSHIFT\* which provides two additional shifting modes. Once you pull the select lever to your side from D-range position, you are in the SPORT Mode where the shift schedule is changed to enjoy wider range of engine performance. Then, should you want to keep the transmission completely under your control, you can simply enter the MANUAL Mode by pushing the select lever back or forward and select whatever gear you need.

## **Electronically-controlled 4-speed Automatic Transmission (SPORTSHIFT\* E-4AT)**

This direct-control type system not only improves fuel consumption and gear change quality, but also contributes to better response.

E-4AT also comes with SPORTSHIFT\* which provides two additional shifting modes, SPORT



Mode and MANUAL Mode. The MANUAL Mode helps control acceleration and deceleration as desired to ensure driving pleasure in all conditions. The MANUAL Mode allows the driver to shift up or down manually via the lever, providing a sportier drive whenever the driver requires it.

\*SPORTSHIFT is a registered trademark of Prodrive Ltd.



# the DRIVABILITY

Technologies to enhance ride quality.

*The suspension technologies have been designed to provide the driver with fantastic handling, assured cornering and superb ride comfort. We have concentrated on maximising the inherent agility gifted from the Symmetrical AWD. Plus, the appropriate car width and reduce the car weight thoroughly has been chosen to achieve superb handling and easier operation. The suspension system layouts and geometry have also been developed, front and rear, further enhancing the car's overall drivability.*

## Suspension

Tuned to match the inherent advantages of low centre of gravity and Symmetrical AWD, while making full use of reduced weight, the Legacy's suspension brings agile handling and superb roadholding. Exclusively for the 3.0R spec.B, we have further developed confident ride characteristics with the addition of Bilstein\* inverted struts in the front and dampers in the rear. This lets drivers enjoy highly balanced steering response, with an even more comfortable ride.

\*Bilstein is a product of ThyssenKrupp Bilstein GmbH.



Bilstein shock absorbers  
(Front: Inverted type strut suspension)

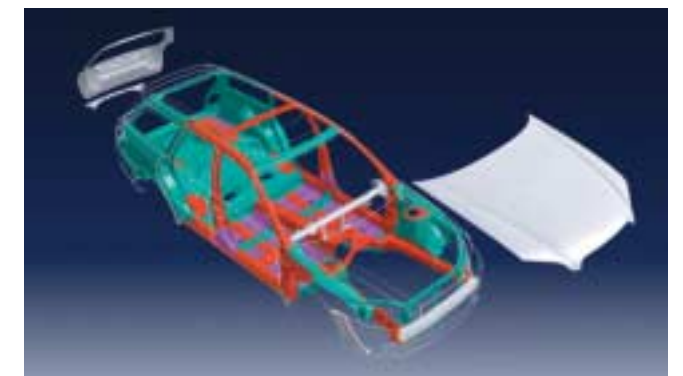


Rear suspension

Front suspension

## Lightweight components

In combination of the most advanced structure analysis and the manufacturing technologies, we successfully developed both the lightweight and rigid body, which used to be believed conflict each other without changing materials. For even better handling performance, aluminium was employed for those parts located far from the centre of gravity.



Material comparison: Steel: 46.5% Aluminium: 4.5%  
High-tensile strength steel and Tailored-Blank: 14.2%  
High-tensile strength steel: 34.8%



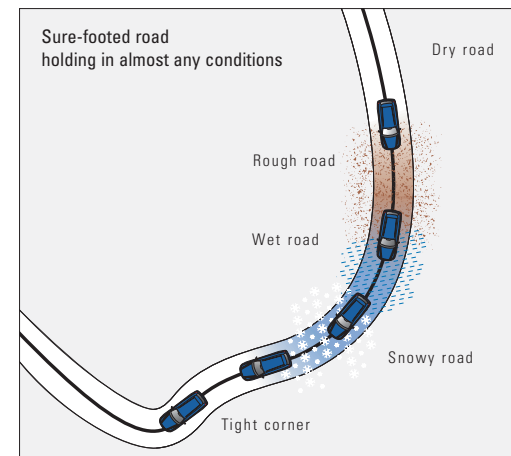


# the ACTIVE safety

Active safety technologies.

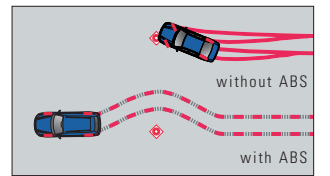
## The reassurance of security

Risk avoidance is a number one priority for Subaru, to protect you by averting danger whenever possible. That's definitely true of the Legacy, since its Symmetrical AWD gives tenacious grip and traction to keep you out of trouble under almost any conditions, in every manoeuvre. Higher levels of stable drivability are available on everything from tight bends to wet, snowy roads or muddy tracks. So you're safe in the knowledge that problems can be avoided – especially with the added active safety of highly developed, reliable braking systems.

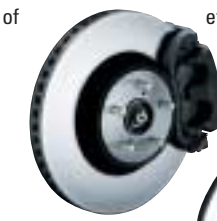


## Dependable braking system

The aim here was to create braking performance suitable for a grand tourer, reliable on all road surfaces and in all driving conditions. The



more compact ABS with accurate sensors helps you brake and steer away from hazards. Electronic Brake-force Distribution System is also effective for braking when fully loaded. Front brakes are



Front brake

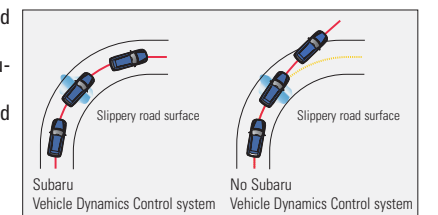


Rear brake

large, with 316 mm ventilated discs on the 3.0R and 3.0R spec.B, and discs at the rear.

## Vehicle Dynamics Control System

Working alongside the safeguard of Symmetrical AWD, it co-ordinates both traction control and ABS braking – redistributing torque automatically, regulating braking and throttle in a fraction of a second. So, everything's balanced, and potentially hazardous situations can be avoided before a problem occurs.





# the **PASSIVE** safety

All-round protection.



Ring-Shaped Reinforcement Frames

## Airbags, seat belts and active headrests

SRS\* dual front airbags are equipped with two-stage inflators. Standard SRS\* dual front side airbags are also a feature of Legacy. SRS\* curtain airbags almost completely cover side windows and centre pillar to cushion impacts. Front seatbelts have pretensioners, load limiters and tension reducers, with 3-point belts for all rear seats. In addition, active headrests for front seats move forward automatically to cradle heads and lessen the risk of whiplash in rear end collisions.

\*SRS = Supplemental Restraint System.  
Most effective when used in conjunction with seat belts.



SRS\* curtain airbags



SRS\* dual front airbags

SRS\* dual front side airbags

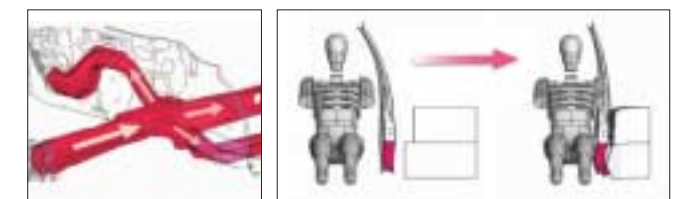


Three 3-point rear seat belts

Active headrests

## Ring-Shaped Reinforcement Frames

The concept has already proved itself. This highly advanced structure has attained world-class collision safety levels by absorbing impacts even more effectively, while reducing weight at the same time. It's a balance of strength and rigidity yet light weight that could only be reached by using state-of-the-art welding techniques on the centre pillars and front frame support members, coupled with extra energy absorption at the door shoulder level. A cross member integrated to the toe board, straightened large-cross-section rear frames and extra rear door catchers are some typical new technologies on Legacy to protect passengers against impact from any direction.



Front collision measures

Side collision measures

## Pedestrian protection

A large distance between bonnet and engine, energy absorbing front bumper, bonnet hinge, wings and detachable module type wipers help minimise pedestrian injury, providing safety for those outside the Legacy as well as in.



After collision

Module wiper



# thinking responsibly

We like all Subaru owners to feel that they're driving cars that are as eco-friendly as we can possibly make them. That's because we're completely committed to environmental and energy issues. So, naturally, we look to reduce weight and improve aerodynamics to improve economy, while cutting down emissions to lowest possible levels. But we also develop recycling technology that helps to make best use of natural resources and reduce waste. That's the kind of technology which will bring us all a better future.





Station Wagon 3.0R spec.B

# the SPACE

The Flexible Space.

## Open up more opportunities

When life's everyday practicalities demand generous luggage space to handle all you need to carry, Legacy delivers it in abundance. In fact, creative use of space is a Subaru hallmark. Take the wide, flat 433 litres\* trunk space of the Sedan – made possible by its ingenious rear suspension design. Then, there's the versatility of the Station Wagon's arrangements, rising to a huge 1,649 litres\* with rear seats folded (one of the largest usable cargo areas in its class).

\*Measured by VDA V14.



Station Wagon 3.0R spec.B



Four large suitcases or golf bags can be stored



Station Wagon: 60/40 split fold rear seats



Station Wagon: Full flat luggage space



Station Wagon: Retractable cargo cover



Sedan: Trunk through rear centre armrest



Sedan: Trunk room



A higher quality of cockpit.



3.0R spec.B  
(with optional Subaru multi-function display system)

The whole ethos of the Legacy's commanding cockpit is to inspire and excite drivers to make sure their high expectations are fully realised. Through utilising the best ergonomic principles and complete attention to functionality, this will always make each journey a pleasure. Take in the shape and form of the controls, the metallic centre panel and sporty dials placed for easy visibility. Everything is honed with a unified taste that lends a distinctive sports feel to the total environment.

A higher quality of living.



Station Wagon 3.0R spec.B  
(with optional Subaru multi-function display system)

Consider the wide open spaces of Legacy's interior. Here's the legroom and breadth that mean every passenger can sit back and enjoy complete comfort. The high quality soft fabric materials or sports-biased leather seating leaves everyone calm and refreshed on even the longest trips. Yet although the emphasis is on luxury, there's no escaping the fact that Legacy loses none of its sporting roots – pampering its occupants, while giving the driver a sense of utter confidence that makes for enjoyable travelling.





## Legacy 3.0R spec.B

### Station Wagon

(6MT, AWD)  
Dimensions : L x W x H: 4,720 x 1,730 x 1,475 mm.  
Engine: Horizontally-Opposed, 6-cylinder, DOHC, 24-valve, gasoline engine  
Displacement: 3,000 cc.  
Max output: 180 kW (245 PS) / 6,600 rpm

### Sedan

(6MT, AWD)  
Dimensions : L x W x H: 4,665 x 1,730 x 1,435 mm.  
Engine: Horizontally-Opposed, 6-cylinder, DOHC, 24-valve, gasoline engine  
Displacement: 3,000 cc.  
Max output: 180 kW (245 PS) / 6,600 rpm

Photo: Brilliant Silver Metallic / Sunroof is optional.  
P40: Subaru multi-function display system is optional.



## Legacy 3.0R

### Station Wagon

(SPORTSHIFT\* E-5AT, AWD)  
Dimensions : L x W x H: 4,720 x 1,730 x 1,470 mm.  
Engine: Horizontally-Opposed, 6-cylinder, DOHC, 24-valve, gasoline engine  
Displacement: 3,000 cc.  
Max output: 180 kW (245 PS) / 6,600 rpm

### Sedan

(SPORTSHIFT\* E-5AT, AWD)  
Dimensions : L x W x H: 4,665 x 1,730 x 1,425 mm.  
Engine: Horizontally-Opposed, 6-cylinder, DOHC, 24-valve, gasoline engine  
Displacement: 3,000 cc.  
Max output: 180 kW (245 PS) / 6,600 rpm

Photo: Brilliant Silver Metallic / Sunroof is optional.  
P40: Subaru multi-function display system is optional.

\* SPORTSHIFT is a registered trademark of Prodrive Ltd.







## Legacy 2.5i

### Station Wagon

(SMT Dual-range / SPORTSHIFT\* E-4AT, AWD)  
Dimensions : L x W x H: 4,720 x 1,730 x 1,470 mm.  
Engine: Horizontally-Opposed, 4-cylinder, SOHC, 16-valve, gasoline engine  
Displacement: 2,457 cc.  
Max output: 121 kW (165 PS) / 5,600 rpm

### Sedan

(SMT / SPORTSHIFT\* E-4AT, AWD)  
Dimensions : L x W x H: 4,665 x 1,730 x 1,425 mm.  
Engine: Horizontally-Opposed, 4-cylinder, SOHC, 16-valve, gasoline engine  
Displacement: 2,457 cc.  
Max output: 121 kW (165 PS) / 5,600 rpm



Photo: Brilliant Silver Metallic / 17 inch aluminium alloy wheel and sunroof are optional.  
P4Z: The optional off-black leather is used.

## Legacy 2.0i

### Station Wagon

(SMT Dual-range / SPORTSHIFT\* E-4AT, AWD)  
Dimensions : L x W x H: 4,720 x 1,730 x 1,470 mm.  
Engine: Horizontally-Opposed, 4-cylinder, SOHC, 16-valve, gasoline engine  
Displacement: 1,994 cc.  
Max output: 101 kW (138 PS) / 5,600 rpm

### Sedan

(SMT / SPORTSHIFT\* E-4AT, AWD)  
Dimensions : L x W x H: 4,665 x 1,730 x 1,425 mm.  
Engine: Horizontally-Opposed, 4-cylinder, SOHC, 16-valve, gasoline engine  
Displacement: 1,994 cc.  
Max output: 101 kW (138 PS) / 5,600 rpm



Photo: Brilliant Silver Metallic

\* SPORTSHIFT is a registered trademark of Prodrive Ltd.



## Exterior Equipment

Head-turning styling comes as standard – especially on the Legacy 3.0R spec.B, with its newly designed wheels. These wheels not only add to driving performance, but also reinforce its sporty and powerful personality. There's also a range of options to make your Legacy as individual as you.



Projector fog lamp (Standard on 3.0R, 3.0R spec.B and 2.5i, optional on 2.0i)  
photo: 2.5i



Roof rails (Station Wagon)



Door mirror with built-in LED turn signal



LED rear fog lamp (Station Wagon)



Tandem sunroof (Station Wagon / Option)



Sunroof (Sedan / Option)



18 inch aluminium alloy wheel  
(3.0R spec.B)



17 inch aluminium alloy wheel  
(Standard on 3.0R, optional on 2.5i)

## Interior Equipment

Inside, we believe form and function should fuse perfectly together. So, you'll find a place for everything, however you choose to use Legacy's versatility. Here again, there's a variety of options to make your Legacy even more individual. Whichever you decide on, you can be sure they'll match the quality of the vehicle itself.



Map reading spot light



Cruise control  
(Standard on 3.0R, 3.0R spec.B and 2.5i, optional on 2.0i)



Front cup holder



Navigation system (Option)



Automatic air conditioning system  
(Standard on 3.0R, 3.0R spec.B and 2.5i, optional on 2.0i)



Centre console with 12-volt power outlet



8-way power adjustable seat  
(Standard on 3.0R and 3.0R spec.B, optional on 2.5i)



Aluminium pedal (3.0R spec.B)



**Accessories**

If you want to go a stage further, there is a whole new world of Subaru Genuine Approved Accessories to look at. When you're contemplating customizing your Legacy, this is the factory-approved place to start.



3.0R  
Optional Side visor, Spoiler trunk lid, Bumper corner protector, Splash guards, Grade emblem



2.5i  
Optional Front grille, Bumper corner protector, Alloy wheel (17 inch), Side visor, Carrier base, Splash guards



*Great journeys begin in a Subaru. Enjoy.*



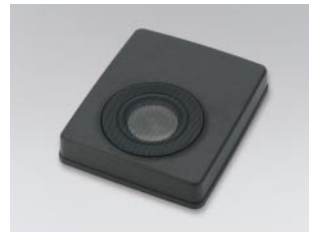
Cargo net



TMC unit  
(For real-time traffic information service)



Arm rest extension



Subwoofer



*subaru-global.com*

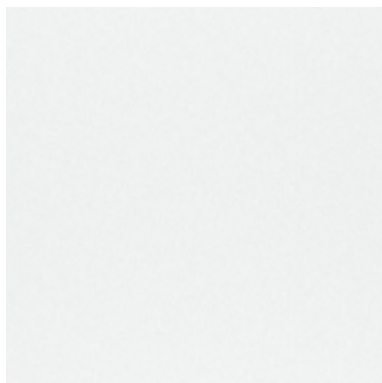


**Think. Feel. Drive.**

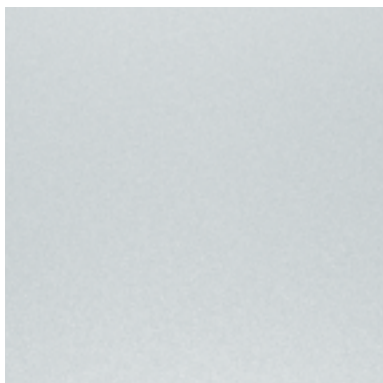


# LEGACY

## Exterior Colour



Arctic White Pearl



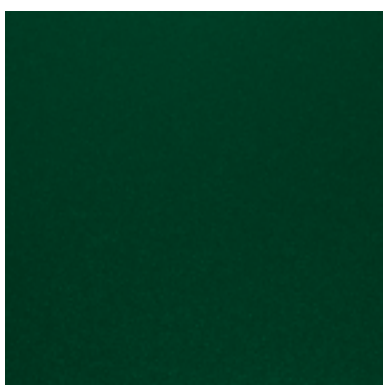
Brilliant Silver Metallic



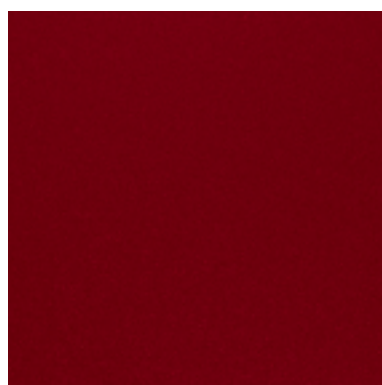
Atlantic Blue Pearl



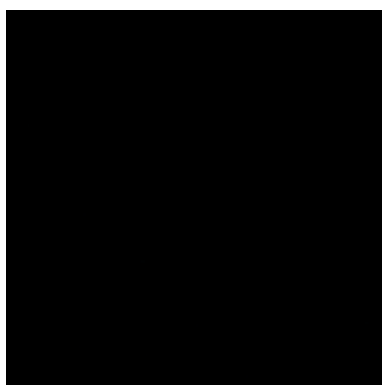
Regal Blue Pearl



Dark Green Mica



Garnet Red Pearl



Obsidian Black Pearl



# LEGACY

## Seat Material

### 3.0R

Leather (Ivory)



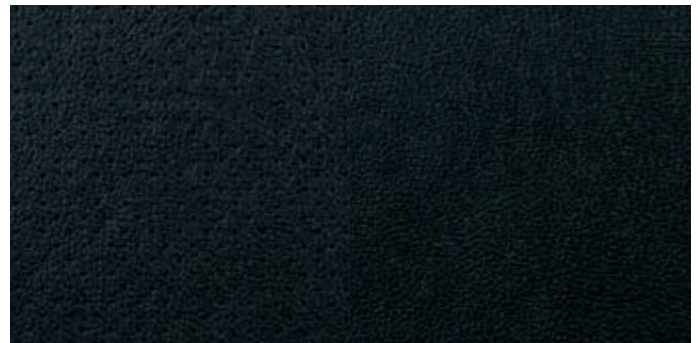
Backing

Trim

### 3.0R spec.B, 3.0R, 2.5i\*, 2.0i\*

\*Option

Leather (Off-black)



Backing

Trim

### 2.5i, 2.0i

Fabric (Off-black)



Backing

Trim