

SECTION BT

MODIFICATION NOTICE:

Following parts have been changed:

- Front bumper
- Rear bumper
- Instrument panel
- Overfender
- License lamp finisher
- Rear seat

CONTENTS

BODY END	4002	EXTERIOR	4009
Body Front End.....	4002	SEAT	4012
Body Rear End and Opener.....	4005	Rear Seat.....	4012
INSTRUMENT PANEL	4006		

- ★ For seat belt, refer to MA and RS section.
- ★ For wiring diagrams of body electrical systems, refer to EL section.

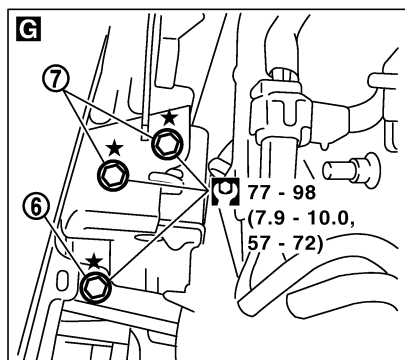
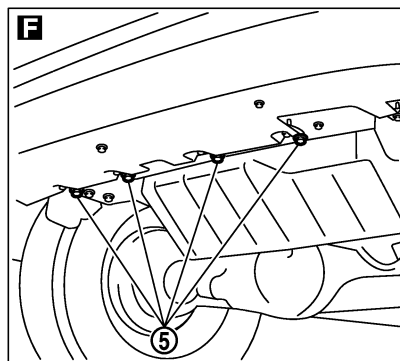
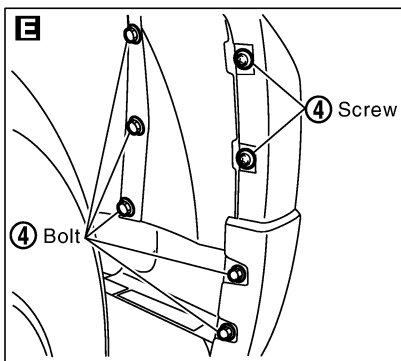
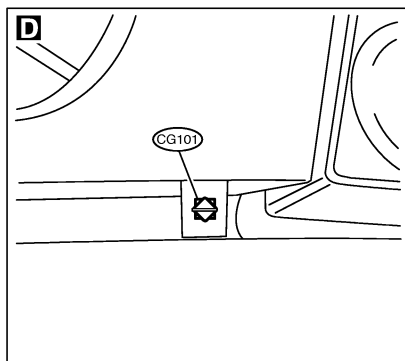
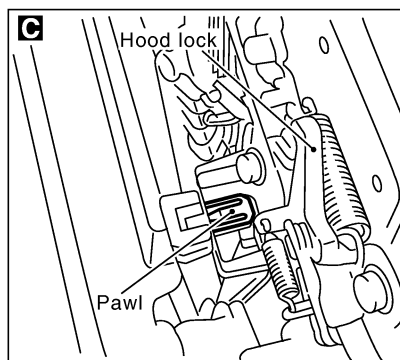
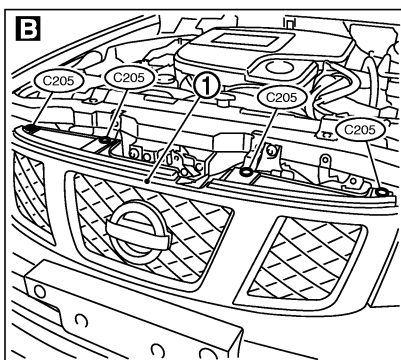
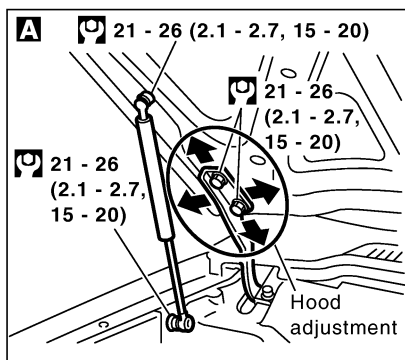
BODY END


Body Front End

- When removing or installing hood, place a cloth or other padding on front fender panel and cowl top. This prevents vehicle body from being scratched.
- Bumper fascia is made of plastic. Do not use excessive force and be sure to keep oil away from it.
- Hood adjustment: Adjust at hinge portion.
- Hood lock adjustment: After adjusting, check hood lock control operation. Apply a coat of grease to hood locks engaging mechanism.
- Hood opener: Do not attempt to bend cable forcibly. Doing so increases effort required to unlock hood.

REMOVAL — Front bumper assembly

- ① Remove front guard bar. Refer to “EXTERIOR” for details, BT-9.
- ② Remove clips securing front grille and remove the front grille. **B C D**
- ③ Remove left and right headlamp washer nozzle. (If equipped.)
- ④ Remove screws and bolts securing left and right front bumper side bracket. **E**
- ⑤ Remove bolts securing bumper lower to engine under cover. **F**
- ⑥ Remove bolts securing left and right front bumper stay upper (without winch). **G**
- ⑦ Remove bolts securing left and right front bumper stay side. **G**
- ⑧ Extract bumper assembly.



 : N·m (kg-m, ft-lb)

★ : Bumper assembly mounting bolts

PIIB1965E

BODY END

Body Front End (Cont'd)

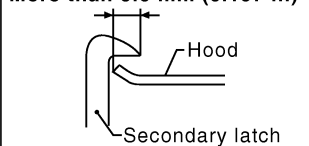
SEC. 620•623•630•650

Hood lock adjustment

- Adjust hood so that hood primary lock meshes at a position 1 to 1.5 mm (0.039 to 0.059 in) lower than fender.
- After hood lock adjustment, adjust bumper rubber.
- When securing hood lock, ensure it does not tilt. Striker must be positioned at the center of hood primary lock.
- After adjustment, ensure that hood primary and secondary lock operate properly.

Hood lock secondary latch hooking length

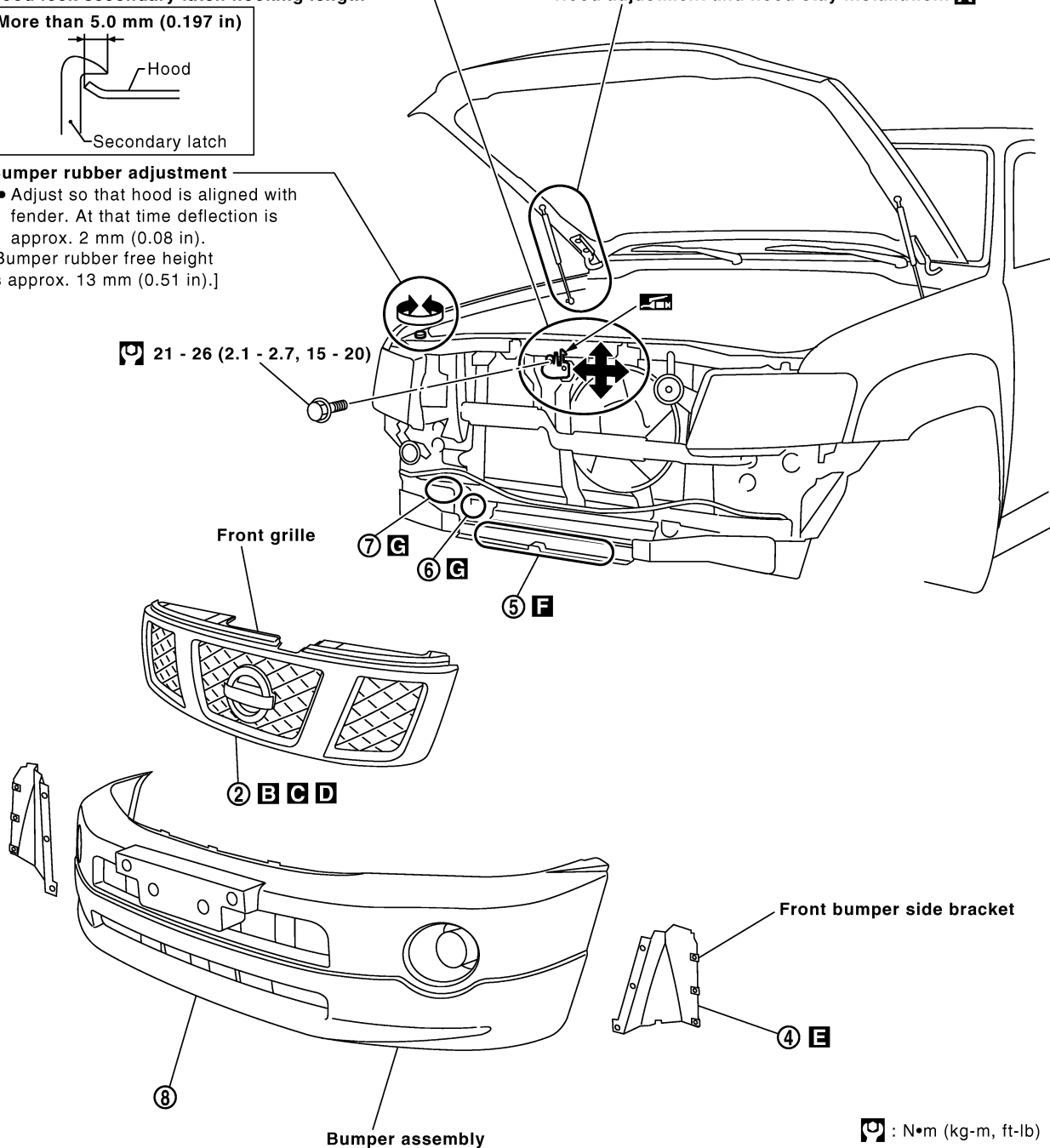
More than 5.0 mm (0.197 in)



Bumper rubber adjustment

- Adjust so that hood is aligned with fender. At that time deflection is approx. 2 mm (0.08 in).
- [Bumper rubber free height is approx. 13 mm (0.51 in).]

Hood adjustment and hood stay installation. **A**

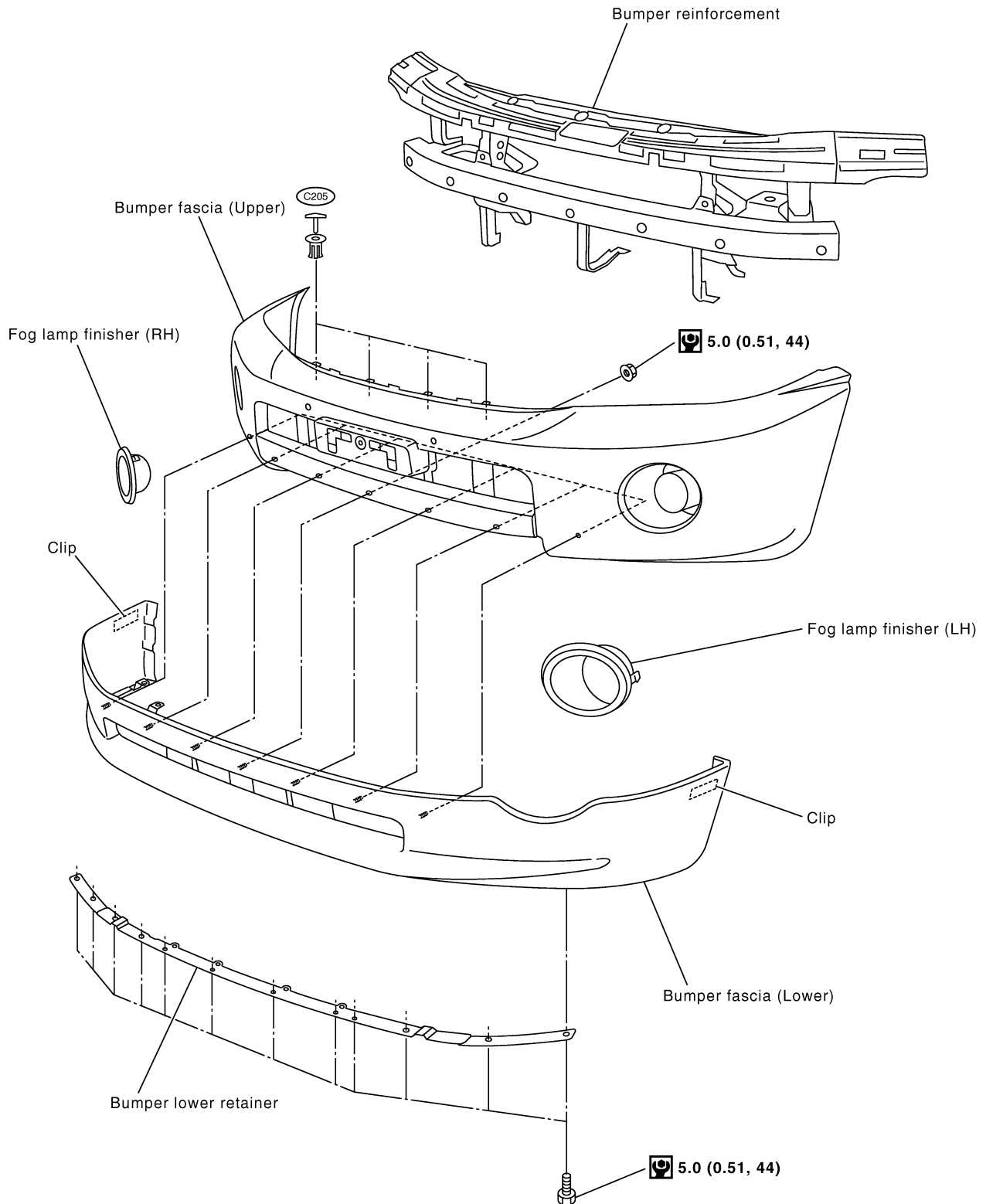



: N•m (kg-m, ft-lb)

PIIB1966E

BODY END

Body Front End (Cont'd)



 : N•m (kg-m, in-lb)

PIIB1967E

BODY END

Body Rear End and Opener

- Bumper fascia is made of plastic. Do not use excessive force and be sure to keep oil away from it.
- Back door lock system adjustment: Adjust lock & striker so that they are in the center.
After adjustment, check back door lock operation.
- Back door hatch lock system adjustment: Adjust lock & striker so that they are in the center.
After adjustment, check back door hatch lock operation.
- Opener cable: Do not attempt to bend cable using excessive force.
- After installation, make sure that back door and fuel filler lid open smoothly.

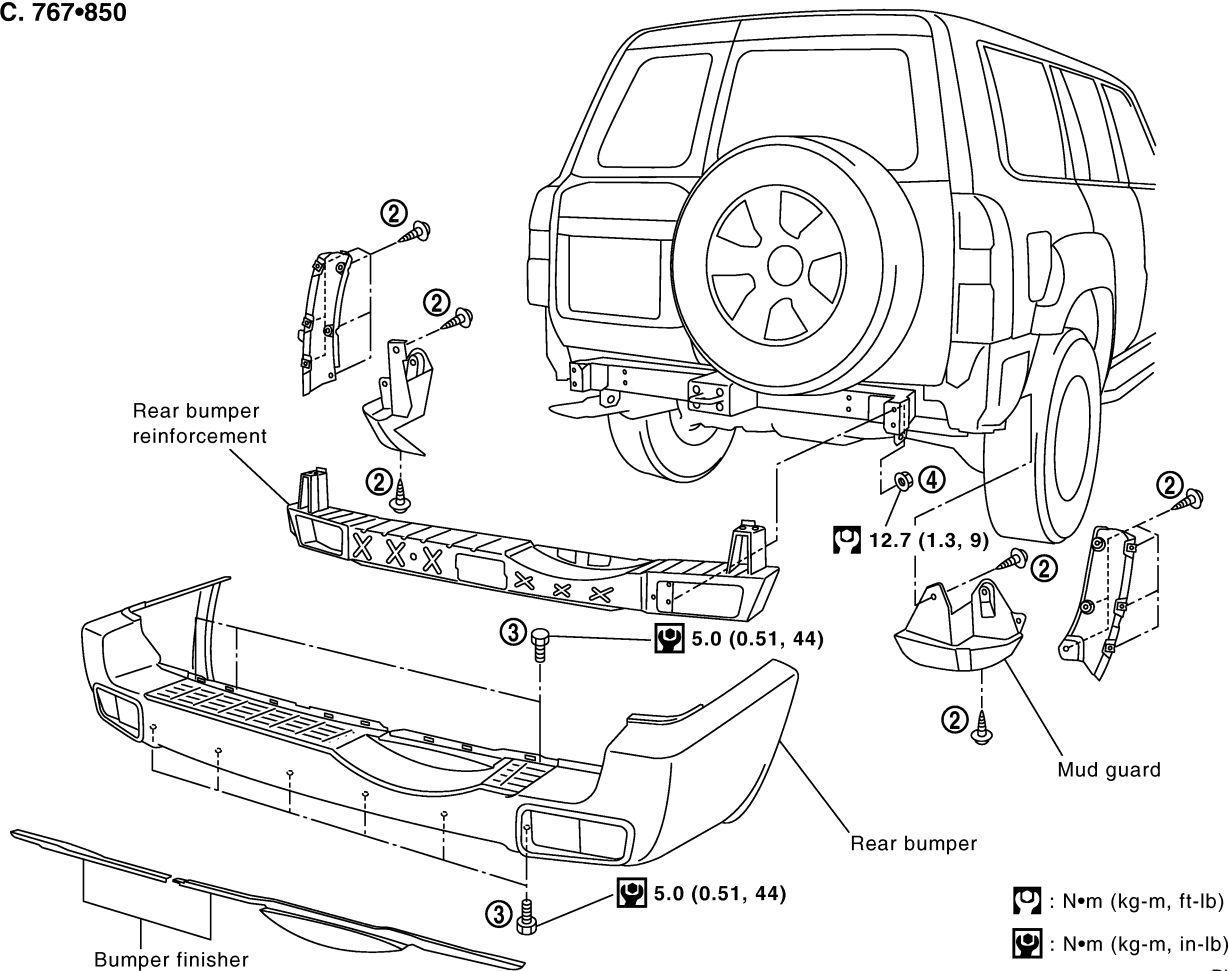
WARNING:

- Be careful not to scratch back door stay and/or back door hatch stay when installing back door and/or back door hatch. A scratched stay may cause gas leakage.
- The contents of the back door stay and back door hatch stay are under pressure. Do not take apart, puncture, apply heat or allow fire near them.

REMOVAL — Rear bumper assembly

- ① Remove rear bumper finisher.
- ② Remove screws securing left and right mudguard.
- ③ Remove bolts securing rear bumper to bumper reinforcement.
- ④ Remove nuts securing rear bumper reinforcement.

SEC. 767•850



PIIB1968E

INSTRUMENT PANEL

CAUTION:

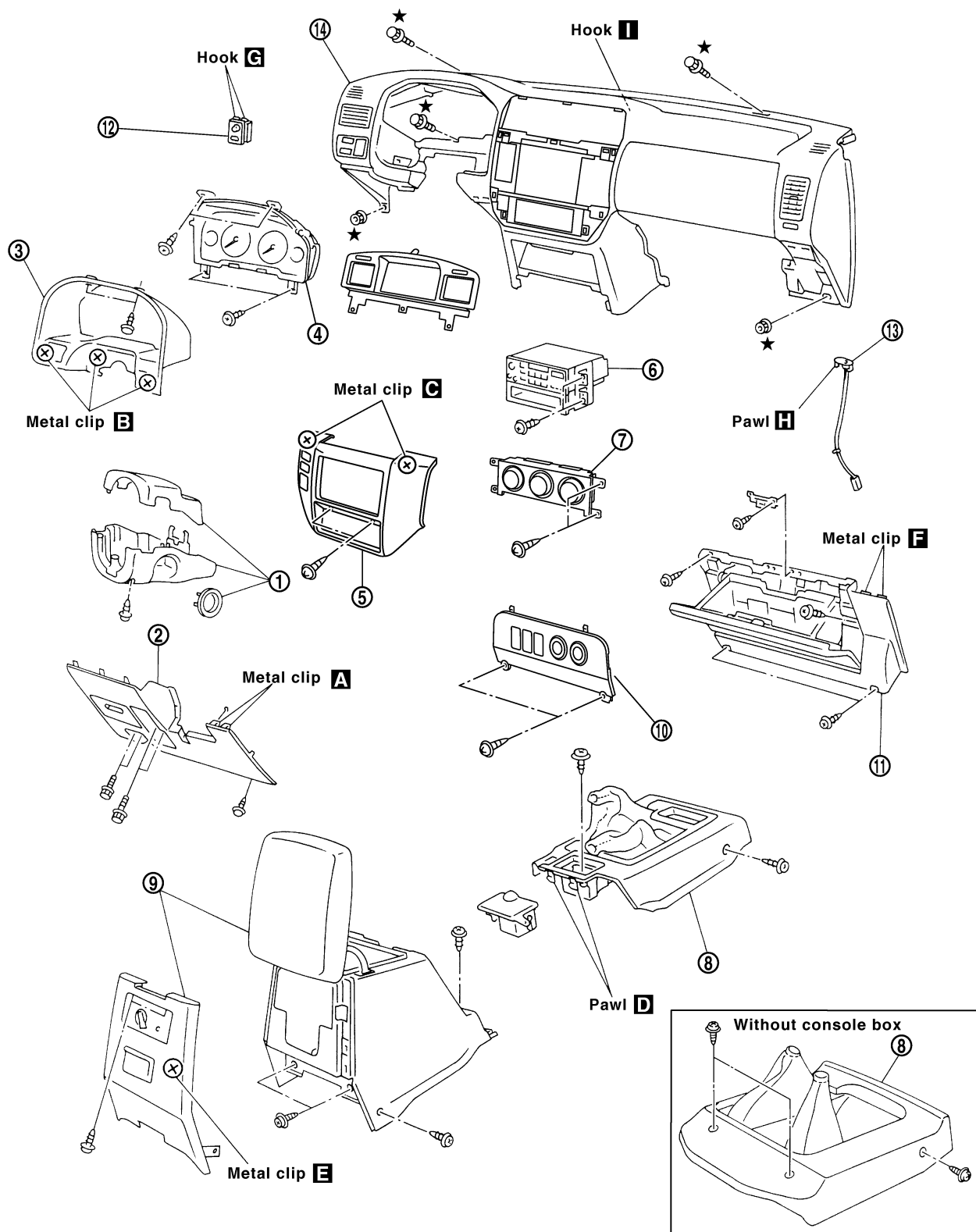
- Disconnect both battery cables in advance.
- Disconnect air bag system line in advance.
- Never tamper with or force air bag lid open, as this may adversely affect air bag performance.
- Be careful not to scratch pad and other parts.

REMOVAL — Instrument panel assembly

Instrument panel assembly	Combination meter	Audio & A/C control	Console box
Remove air bag module (driver) and steering wheel. Refer to "SUPPLEMENTAL RESTRAINT SYSTEM" in RS section for details.			
Remove dash side lower finishers. Refer to "Side and Floor Trim" in "INTERIOR TRIM" for details, BT-15 in Service Manual (Pub. No. SM7E-2Y61G1).			
① Steering column cover and combination switch ● Remove screws.			
② Lower instrument panel on driver side ● Remove bolts and screws. A			
③ Cluster lid A ● Remove screws then disconnect harness connectors. B			
④ Combination meter ● Remove screws then disconnect harness connectors.			
⑤ Cluster lid C ● Pull out then disconnect harness connectors. ● Remove screws then remove in-vehicle sensor. C			
⑥ Audio ● Remove screws then disconnect harness connectors.			
⑦ A/C control unit ● Remove screws then disconnect harness connectors.			
⑧ Console M/T or A/T finisher ● Remove screws then disconnect harness connectors. D			
⑨ Console box assembly ● Remove screws then disconnect harness connectors. E			
⑩ Instrument panel stay cover ● Remove screws then disconnect harness connectors.			
⑪ Glove box assembly and lower instrument panel on passenger side ● Remove screws. F			
⑫ Mirror control switch ● Disconnect harness connector. G			
Remove front pillar garnish. Refer to "Side and Floor Trim" in "INTERIOR TRIM" for details, BT-15 in Service Manual (Pub. No. SM7E-2Y61G1).			
⑬ Mask instrument LH/RH or sensors. ● Disconnect harness connectors (models with sensors). H			
⑭ Instrument panel and pads ● Remove bolts and nuts then disconnect harness connectors. I			

INSTRUMENT PANEL

SEC. 248•272•280•487•680•685•969

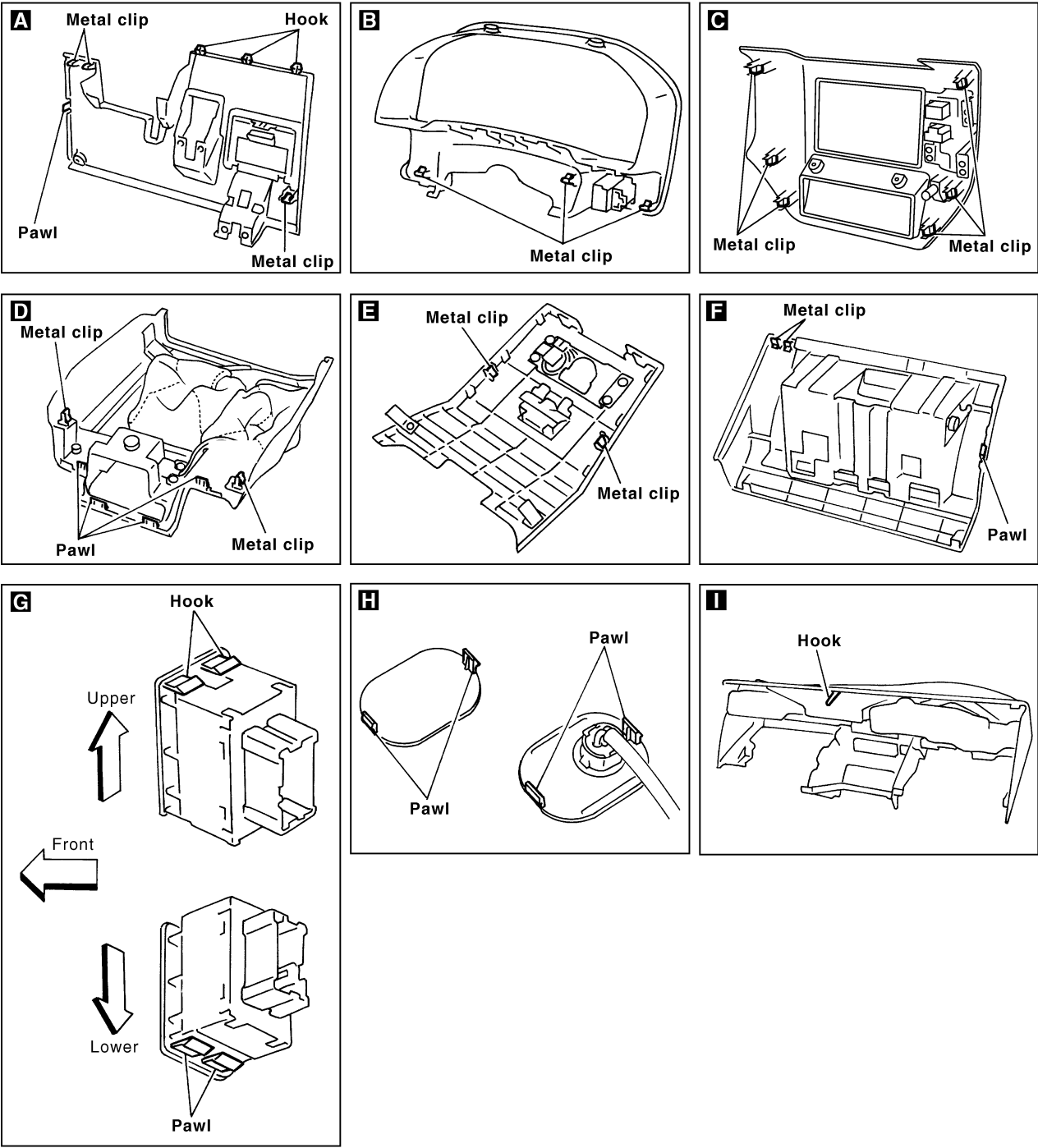


★ : Instrument panel assembly mounting bolts & nuts

PIIB1969E

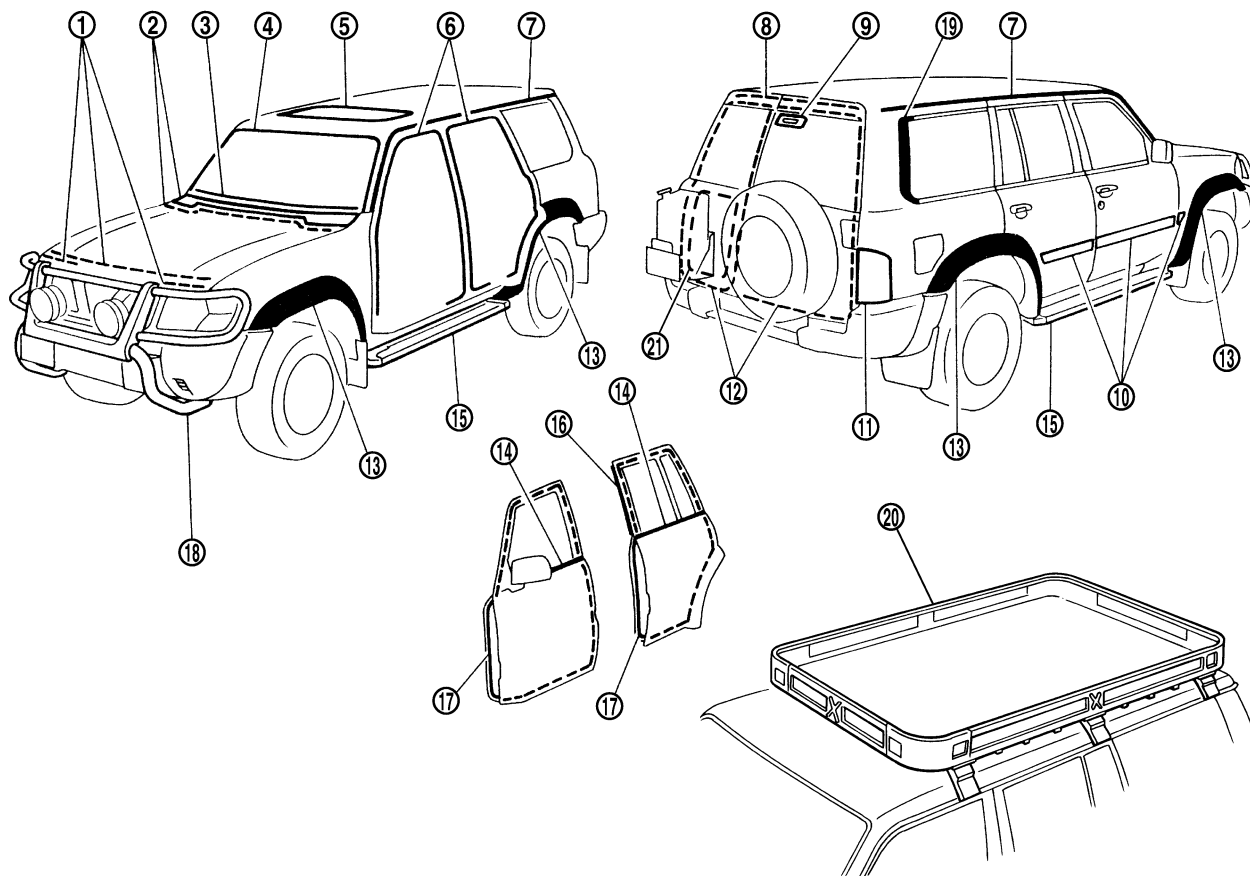
BT-4007

INSTRUMENT PANEL

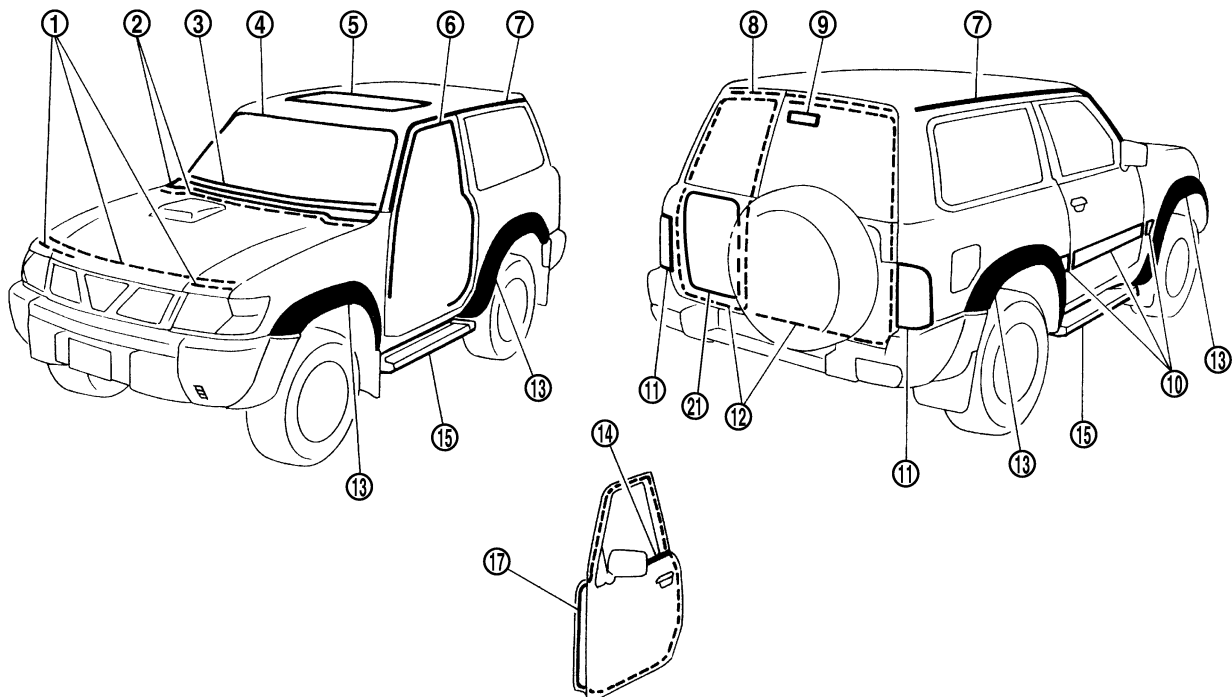


EXTERIOR

Wagon



Hardtop



PIIB1974E

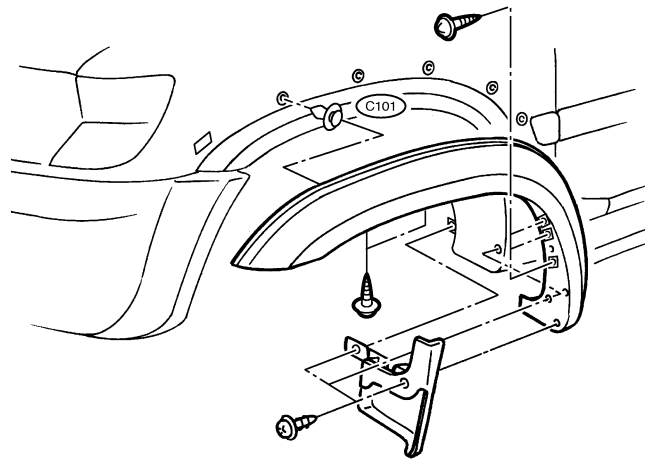
BT-4009

EXTERIOR

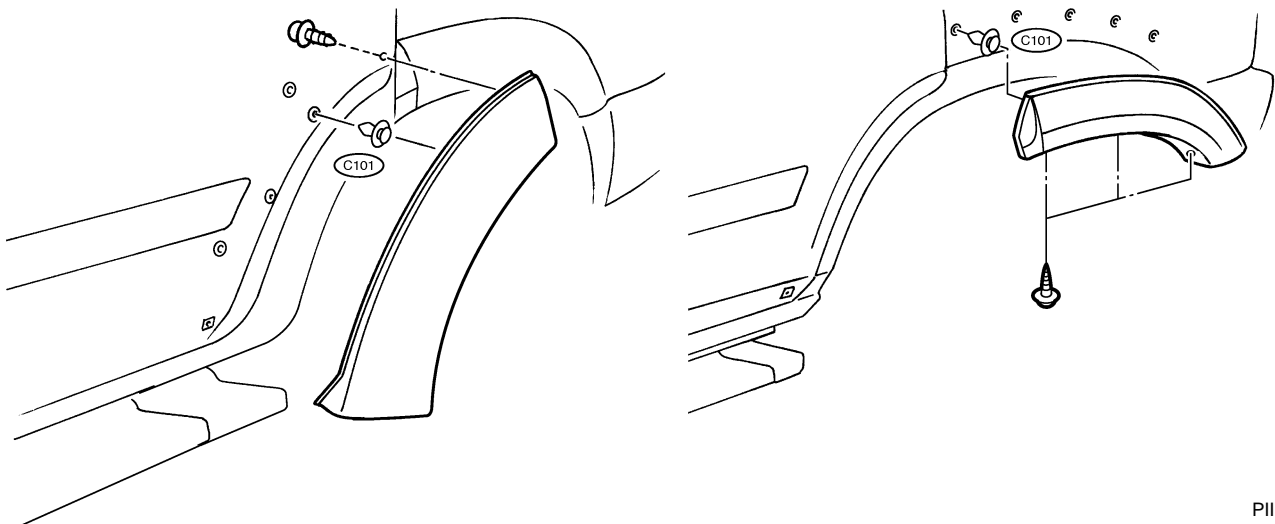
⑬ Over fender

SEC. 630•780

Front



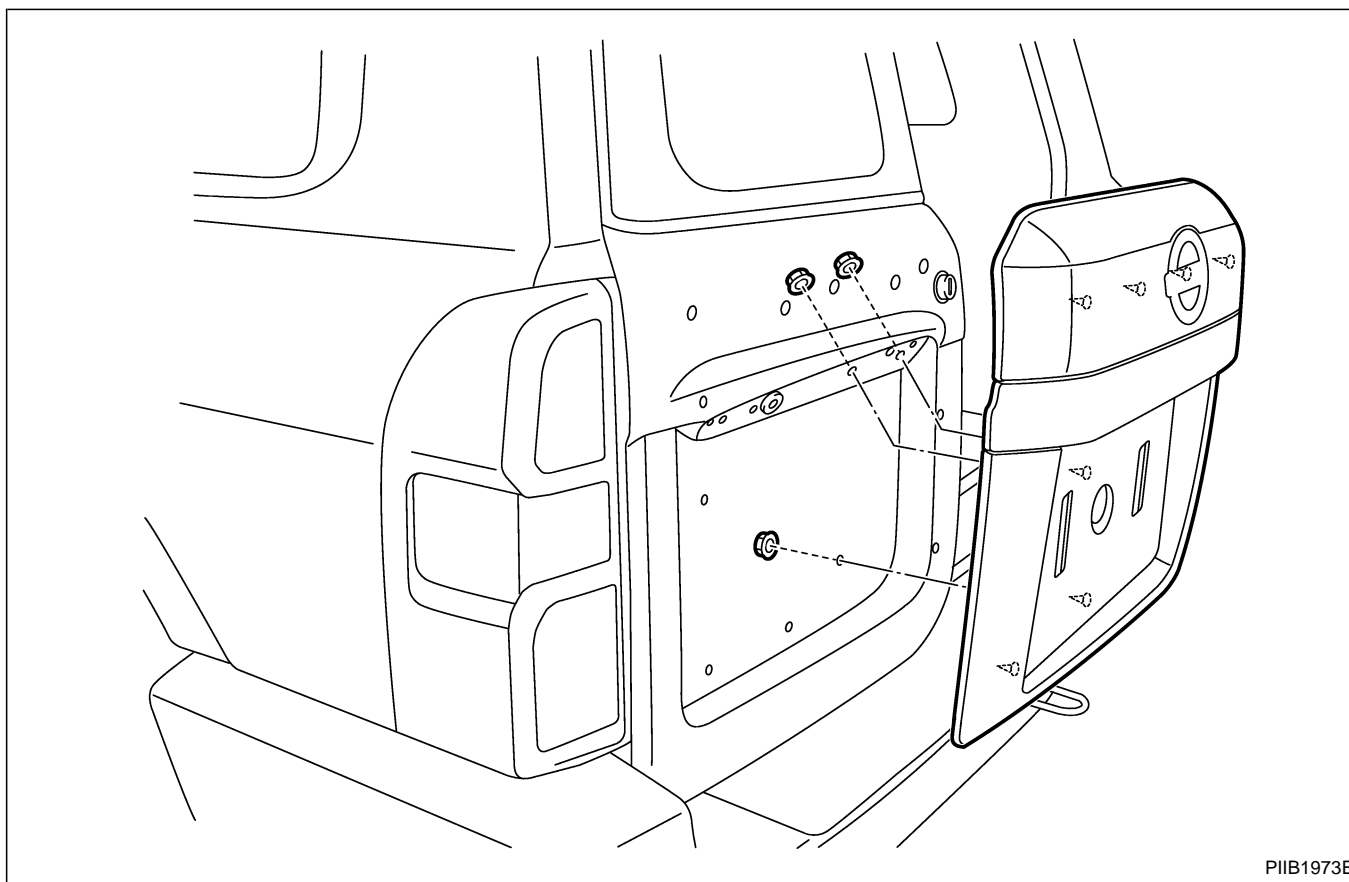
Rear (Wagon)



PIIB1972E

EXTERIOR

②① License lamp finisher



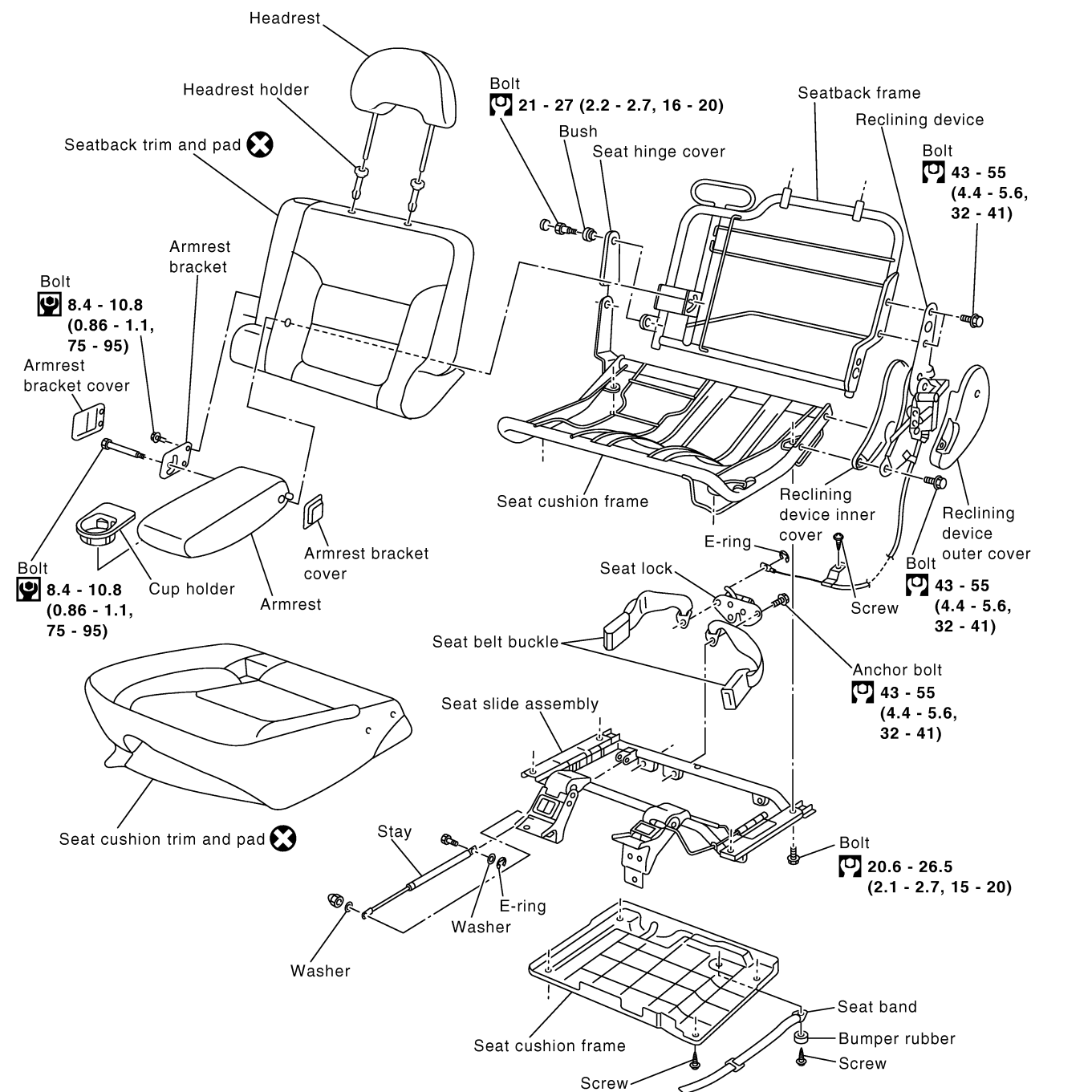
PIIB1973E

SEAT

Rear Seat

WAGON (Type-III)

SEC. 880•869



✖: Always replace after every disassembly.

 : N•m (kg-m, ft-lb)

 : N•m (kg-m, in-lb)

PIIB1975E

BT-4012