

SECTION

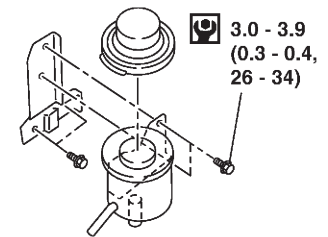
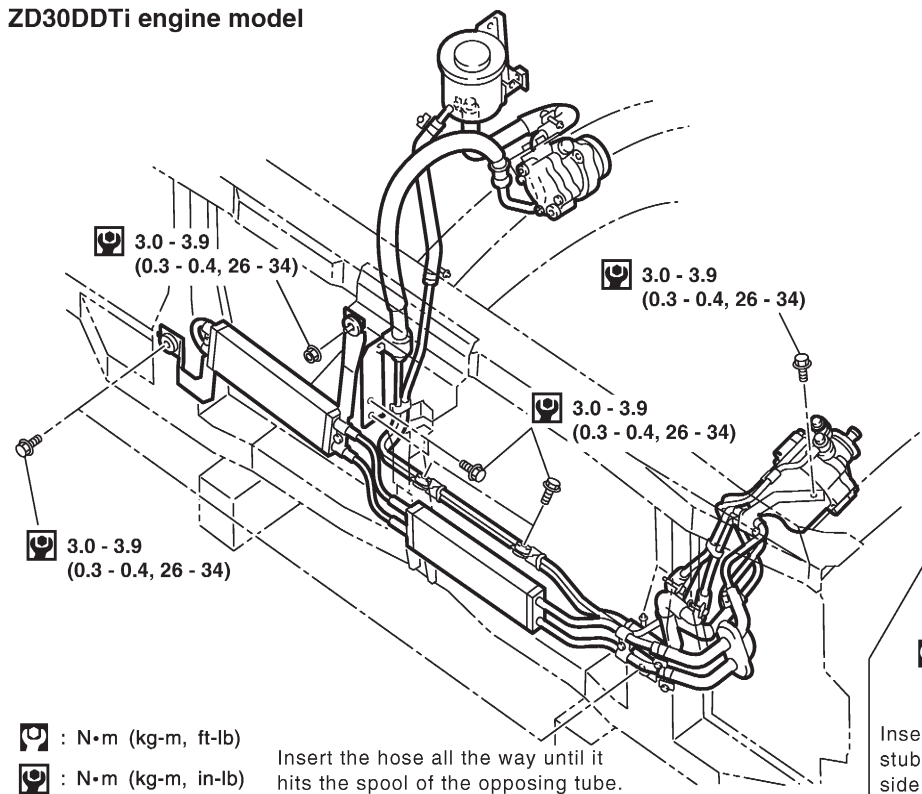
ST

- MODIFICATION NOTICE:**
- Power steering oil pump for ZD30ETi engine has been adopted.

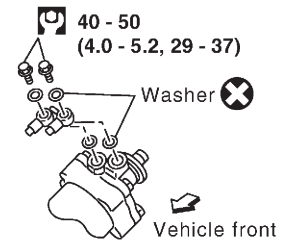
CONTENTS

<b>POWER STEERING OIL PUMP</b> .....	1002	<b>SERVICE DATA AND SPECIFICATIONS</b>	
Removal and Installation .....	1002	<b>(SDS)</b> .....	1004
Disassembly and Assembly.....	1003	Inspection and Adjustment .....	1004

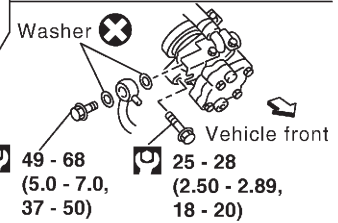
### ZD30DDTi engine model



### Tank section details



### Gear section details



Insert and secure the hose cap stub into the notch on the pump side, and confirm the position.

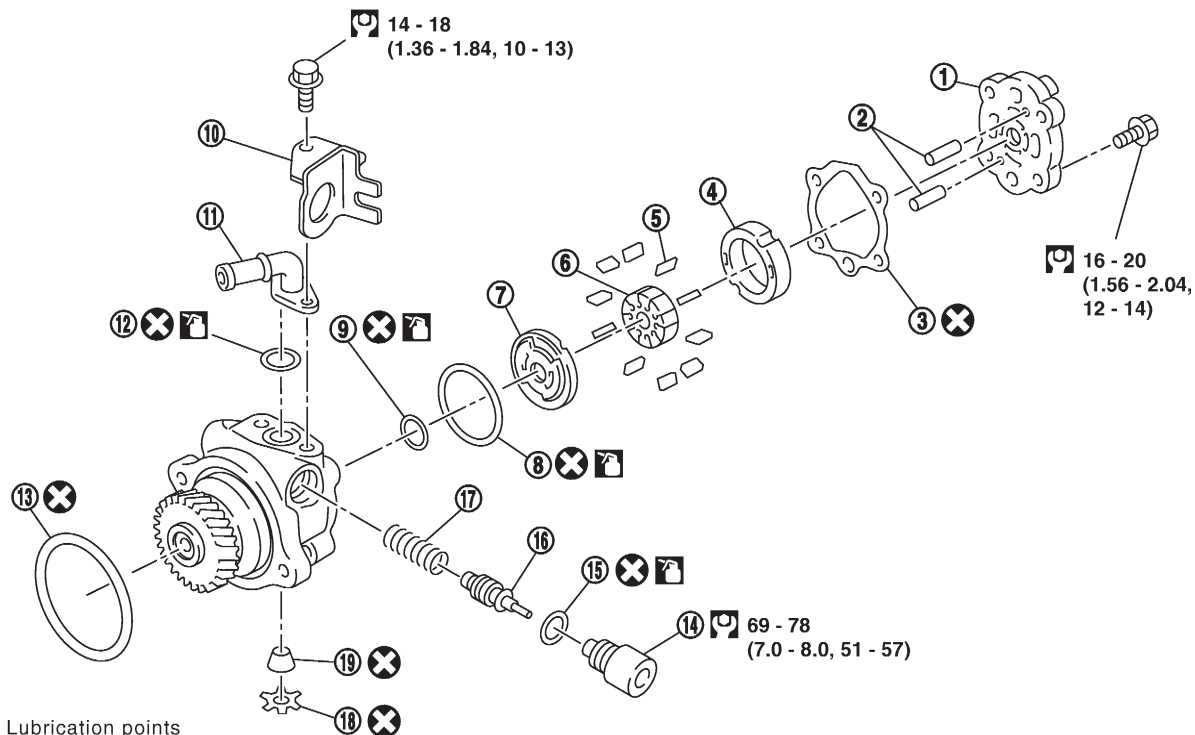
### Pump section details

SST921C

# POWER STEERING OIL PUMP

## Disassembly and Assembly

SEC. 490•493



: Lubrication points  
(With automatic transmission fluid type DEXRON™ III or equivalent)

: N•m (kg-m, ft-lb)

SST922C

- |                    |                  |                  |
|--------------------|------------------|------------------|
| ① Rear body        | ⑧ O-ring (Outer) | ⑭ Connector bolt |
| ② Pin              | ⑨ O-ring (Inner) | ⑮ O-ring         |
| ③ Gasket           | ⑩ Blacket        | ⑯ Spool valve    |
| ④ Cam ring         | ⑪ Suction pipe   | ⑰ Spring         |
| ⑤ Vane             | ⑫ O-ring         | ⑱ Snap ring      |
| ⑥ Rotor            | ⑬ O-ring         | ⑲ Plug           |
| ⑦ Front side plate |                  |                  |

## SERVICE DATA AND SPECIFICATIONS (SDS)

### Inspection and Adjustment

#### POWER STEERING SYSTEM (Model: PB69K)

Steering wheel turning force (at 360° from neutral position and circumference of steering wheel) N (kg, lb)	39 (4, 9) or less
Oil pump pressure kPa (bar, kg/cm <sup>2</sup> , psi)	8,140 - 8,728 (81.4 - 87.3, 83 - 89, 1,180 - 1,266) at idling
Fluid capacity liter m (Imp fl oz)	Approximately 1,000 (35.2)
Normal operating temperature °C (°F)	60 - 80 (140 - 176)
Steering gear turning torque N-m (kg-cm, in-lb)	
360° position from straight-ahead position	0.15 - 0.69 (1.5 - 7.0, 1.3 - 6.1)
Straight-ahead position (As compared with steering wheel turned 360°)	0.2 (2, 1.7) higher
Maximum turning torque	0.7 - 1.0 (7 - 10, 6.1 - 8.7)
Backlash at pitman arm top end (in a straight-ahead position) mm (in)	0 - 0.1 (0 - 0.004)
End play (at sector shaft end in neutral position) mm (in)	0.1 (0.004) or less