

SECTION **GI****OUTLINE OF MODIFICATIONS:**

- Side air bag has been adopted.
- Power window (driver's side only) with an interruption detection function has been adopted.
- ZD30DDTi engine has been adopted in place of RD28ETi engine.
- CONSULT-II has been adopted.
- ID code entry procedure of multi-remote control system has been changed.

APPLIED FROM:**For Europe:**

⚙ JN1TESY61U0000001 ⚙
 ⚙ JN1KESY61U0000001 ⚙

For Israel:

⚙ JN1TESY611X800001 ⚙
 ⚙ JN1KESY611X800001 ⚙

CONTENTS

PRECAUTIONS AND PREPARATION	1002
Supplemental Restraint System (SRS) "AIR BAG" and "SEAT BELT PRE-TENSIONER" ...	1002
Precautions for Fuel.....	1002
CONSULT-II CHECKING SYSTEM	1003
Function and System Application	1003
Nickel Metal Hydride Battery Replacement.....	1003
Checking Equipment.....	1004

CONSULT-II Data Link Connector (DLC) Circuit.....	1004
IDENTIFICATION INFORMATION	1005
Model Variation	1005
Identification Number	1007
LIFTING POINTS AND TOW TRUCK TOWING	1009
Screw Jack.....	1009
Tow Truck Towing	1010

PRECAUTIONS AND PREPARATION

Supplemental Restraint System (SRS) “AIR BAG” and “SEAT BELT PRE-TENSIONER”

The Supplemental Restraint System such as “AIR BAG” and “SEAT BELT PRE-TENSIONER” used along with a seat belt, helps to reduce the risk or severity of injury to the driver and front passenger for certain types of collision. The SRS system composition which is available to NISSAN MODEL Y61 is as follows (The composition varies according to the destination and optional equipment.):

- For a frontal collision
The Supplemental Restraint System consists of driver air bag module (located in the center of the steering wheel), front passenger air bag module (located on the instrument panel on passenger side), seat belt pre-tensioners, a diagnosis sensor unit, warning lamp, wiring harness and spiral cable.
- For a side collision
The Supplemental Restraint System consists of front side air bag module (located in the outer side of front seat), satellite sensor, diagnosis sensor unit (one of components of air bags for a frontal collision), wiring harness, warning lamp (one of components of air bags for a frontal collision).

Information necessary to service the system safely is included in the **RS section** of this Service Manual.

WARNING:

- To avoid rendering the SRS inoperative, which could increase the risk of personal injury or death in the event of a collision which would result in air bag inflation, all maintenance should be performed by an authorized NISSAN dealer.
- Improper maintenance, including incorrect removal and installation of the SRS, can lead to personal injury caused by unintentional activation of the system. For removal of Spiral Cable and Air Bag Module, see the RS section.
- Do not use electrical test equipment on any circuit related to the SRS unless instructed to in this Service Manual. Spiral cable and wiring harnesses covered with yellow insulation tape either just before the harness connectors or for the complete harness are related to the SRS.

Precautions for Fuel

DIESEL ENGINE*:

Diesel fuel of at least 50 cetane for ZD30DDTi engine

* If two types of diesel fuel are available, use summer or winter fuel properly according to the following temperature conditions.

- Above -7°C (20°F) ... Summer type diesel fuel.
- Below -7°C (20°F) ... Winter type diesel fuel.

CAUTION:

- Do not use home heating oil, gasoline, or other alternate fuels in your diesel engine. The use of those can cause engine damage.
- Do not use summer fuel at temperature below -7°C (20°F). The cold temperature will cause wax to form in the fuel. As a result, it may prevent the engine from running smoothly.
- Do not add gasoline or other alternate fuels to diesel fuel.

CONSULT-II CHECKING SYSTEM

Function and System Application

Diagnostic test mode	Function	ENGINE	A/T	ABS	AIR BAG	NATS*	SMART EN-TRANCE
Self-diagnostic results	Self-diagnostic results can be read and erased quickly.	x	x	x	x	x	—
Trouble diagnostic record	Current self-diagnostic results and all trouble diagnostic records previously stored can be read.	—	—	—	x	—	—
ECU discriminated No.	Classification number of a replacement ECU can be read to prevent an incorrect ECU from being installed.	—	—	—	x	—	—
Data monitor	Input/Output data in the ECU (ECM) can be read.	x	x	x	—	—	—
DTC work support	This mode enables a technician to set operating conditions to confirm self-diagnosis status/results.	—	x	—	—	—	—
Active test	Diagnostic Test Mode in which CONSULT-II drives some actuators apart from the ECMs and also shifts some parameters in a specified range.	x	—	x	—	—	—
ECU (ECM) part number	ECU (ECM) part number can be read.	x	x	x	—	—	—
Control unit initialization	All registered ignition key IDs in NATS components can be initialized and new IDs can be registered.	—	—	—	—	x	—
REMO CONT ID SET UP	A maximum of four IDs (identifications) can be registered in the memory using the remote controller. These IDs can be also be confirmed and erased as required.	—	—	—	—	—	x

x: Applicable

*: NATS (Nissan Anti-Theft System)

Nickel Metal Hydride Battery Replacement

CONSULT-II contains a nickel metal hydride battery. When replacing the battery obey the following:

WARNING:

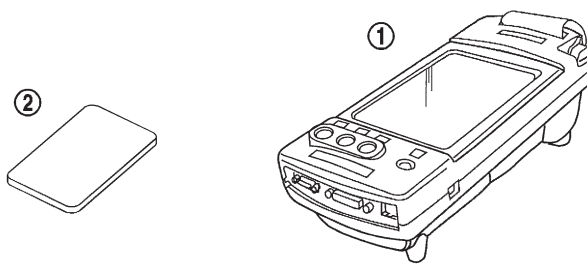
Replace the nickel metal hydride battery with Genuine CONSULT-II battery only. Use of another battery may present a risk of fire or explosion. The battery may present a fire or chemical burn hazard if mistreated. Do not recharge, disassemble or dispose of in fire.

Keep the battery out of reach of children and discard used battery conforming to the local regulations.

CONSULT-II CHECKING SYSTEM

Checking Equipment

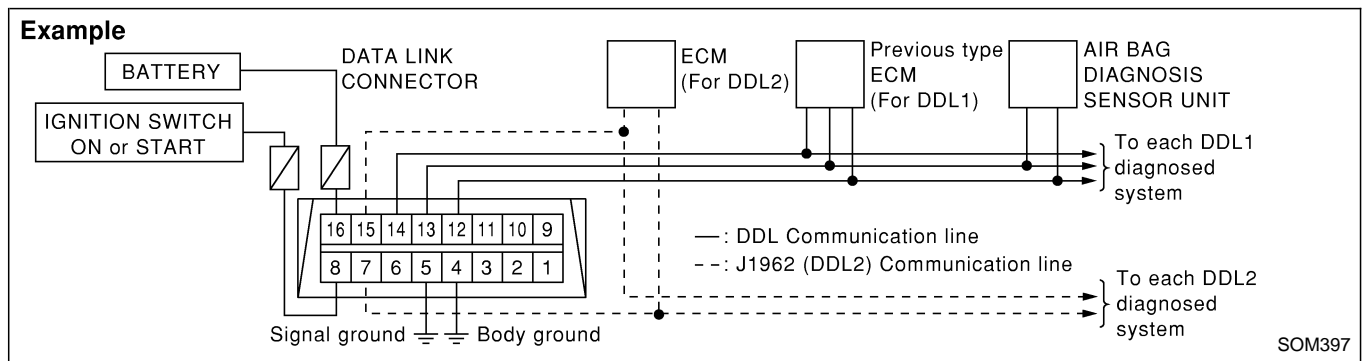
When ordering the below equipment, contact your NISSAN distributor.

Tool name	Description
NISSAN CONSULT-II ① CONSULT-II unit (Tester internal software: Resident version 3.2.0) and accessories ② Program card AED99C (Version 3.0) and EEN99A (For NATS) To confirm the best combination of those softwares, refer to CONSULT-II Operation Manual.	 SGI100A

NOTE:

- The CONSULT-II must be used in conjunction with a program card. CONSULT-II does not require loading (Initialization) procedure.
- Be sure the CONSULT-II is turned off before installing or removing a program card.

CONSULT-II Data Link Connector (DLC) Circuit



INSPECTION PROCEDURE

If the CONSULT-II cannot diagnose the system properly, check the following items.

Symptom	Check item
CONSULT-II cannot access any system.	<ul style="list-style-type: none"> • CONSULT-II DLC power supply circuit (Terminal 8) and ground circuit (Terminal 4) (For detailed circuit, refer to EC section, "MIL & DATA LINK CONNECTORS".) • CONSULT-II (DDL) cable
CONSULT-II cannot access individual system. (Other systems can be accessed.)	<ul style="list-style-type: none"> • CONSULT-II program card (Check the appropriate CONSULT-II program card for the system. Refer to "Checking Equipment" above.) • Power supply and ground circuit for the control unit of the system (For detailed circuit, refer to wiring diagram for each system.) • Open or short circuit between the system and CONSULT-II DLC (For detailed circuit, refer to wiring diagram for each system.)

IDENTIFICATION INFORMATION

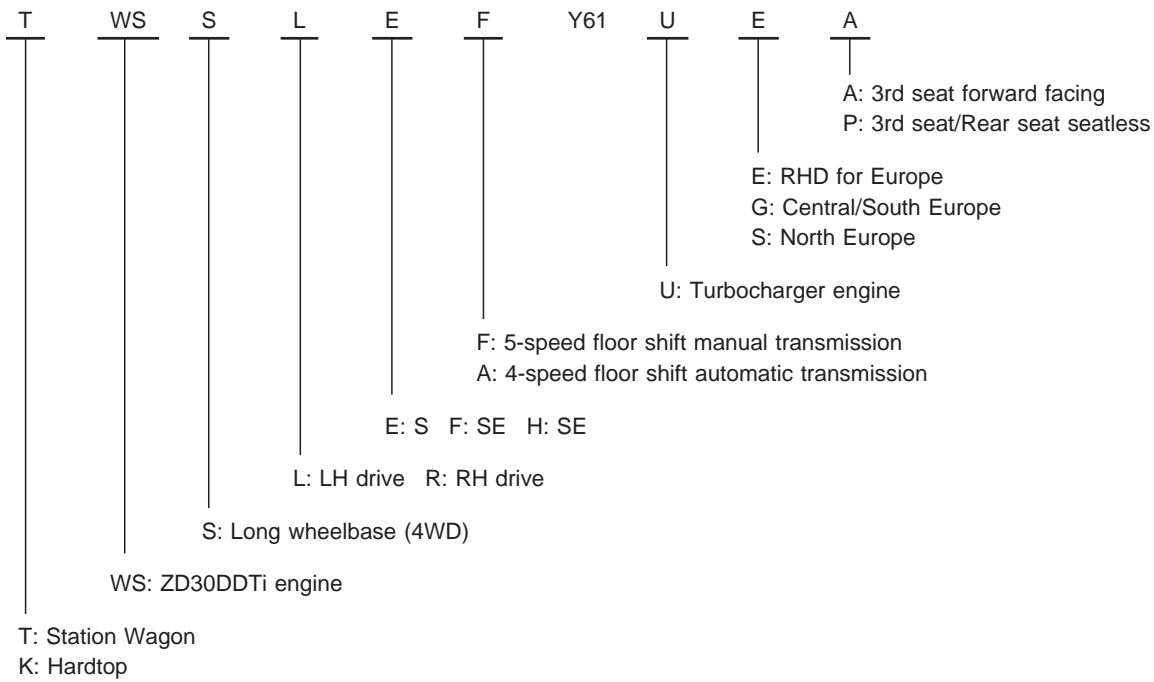
Model Variation

Destination	Steering position	Engine	Model			Hardtop		Station Wagon		
			Rear seat arrangement			2nd seat		2nd center split bench seat		
						Forward facing	Seatless	3rd seat		
								Seatless	Forward facing	
			Front differential			H233B				
			Rear differential			H233B/H260				
Transmis- sion	Transfer	Grade								
Europe	RHD	ZD30DDTi	FS5R50B	TX12A	S	KWSSREFY61UEA	—	—	TWSSREFY61UEA	
			RE4R03A			—	—	—	TWSSREAY61UEA	
			FS5R50B		SE	KWSSRFFY61UEA	—	—	TWSSRFFY61UEA	
			RE4R03A			KWSSRFAY61UEA	—	—	TWSSRFAY61UEA	
			FS5R50B		SE	—	—	—	TWSSRHFY61UEA	
			RE4R03A			—	—	—	TWSSRHAY61UEA	
	LHD		FS5R50B		S	KWSSLEFY61UGA	KWSSLEFY61USP	TWSSLEFY61USP	TWSSLEFY61UGA	
			RE4R03A			—	—	—	TWSSLEAY61UGA	
			FS5R50B		SE	KWSSLFFY61UGA	—	TWSSLFFY61USP	TWSSLFFY61UGA	
						—	—	—	TWSSLFFY61USA	
			RE4R03A			KWSSLFAY61UGA	—	—	TWSSLFAY61UGA	
						—	—	—	TWSSLFAY61USA	
		FS5R50B	SE	—	—	—	TWSSLHFY61UGA			
				—	—	—	TWSSLHFY61USA			
		RE4R03A		—	—	—	TWSSLHAY61UGA			
				—	—	—	TWSSLHAY61USA			

IDENTIFICATION INFORMATION

Model Variation (Cont'd)

Prefix and suffix designations



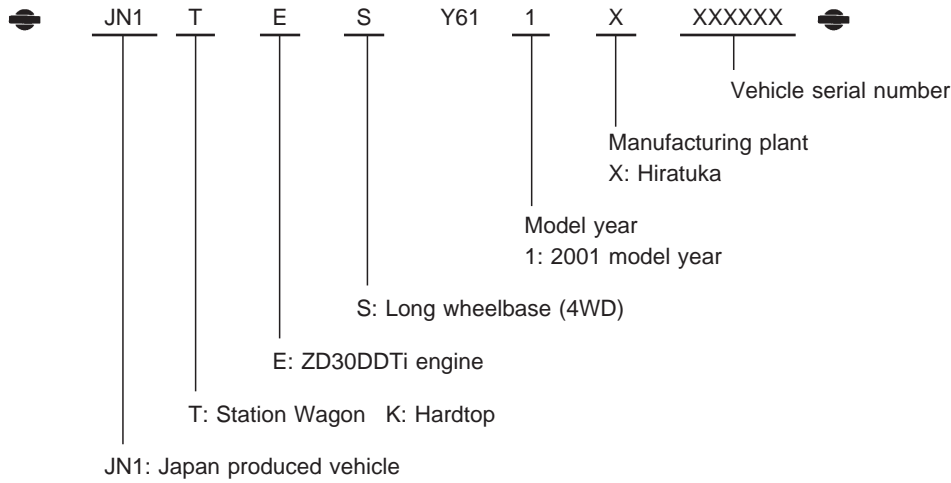
IDENTIFICATION INFORMATION

Identification Number

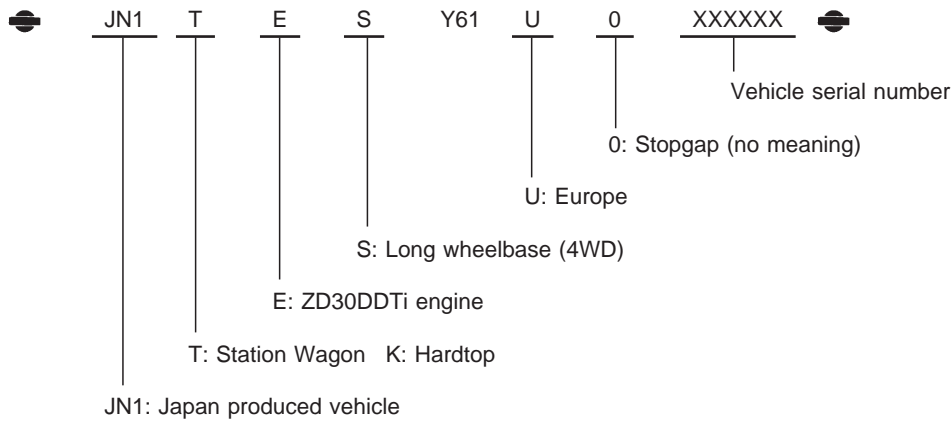
VEHICLE IDENTIFICATION NUMBER (Chassis number)

Prefix and suffix designations

For Israel



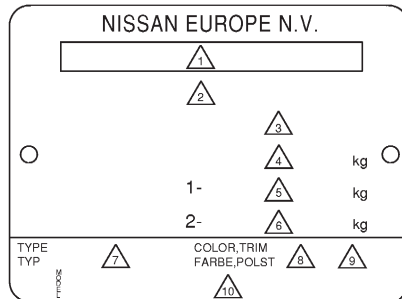
For Europe (except for Israel)



IDENTIFICATION INFORMATION

Identification Number (Cont'd) IDENTIFICATION PLATE

Europe

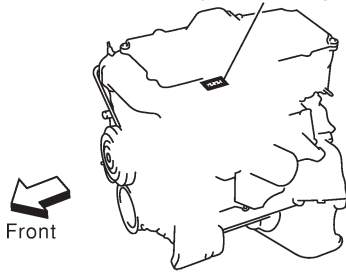


- | | |
|--|----------------------------|
| 1 Type approval number | 8 Body color code |
| 2 Vehicle identification number (Chassis number) | 9 Trim color code |
| 3 Gross vehicle weight | 10 Model |
| 4 Gross combination weight | 11 Engine model |
| Gross vehicle weight | 12 Engine displacement |
| + Gross trailing capacity (Weight) | 13 Transmission model |
| 5 Gross axle weight (Front) | 14 Axle model |
| 6 Gross axle weight (Rear) | 15 Manufacture month, year |
| 7 Type | |

SGI126AA

ZD30DDTi engine

Stamped on the cylinder head



SGI137A

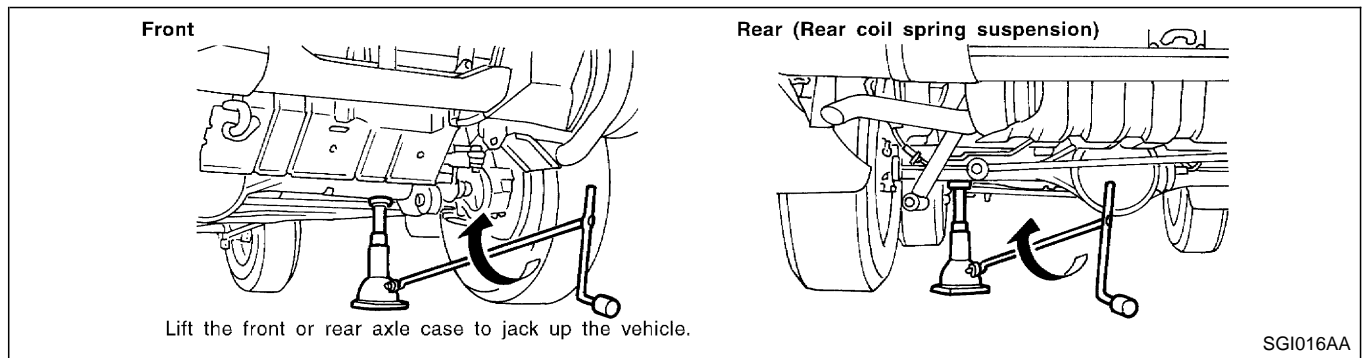
ENGINE SERIAL NUMBER

LIFTING POINTS AND TOW TRUCK TOWING

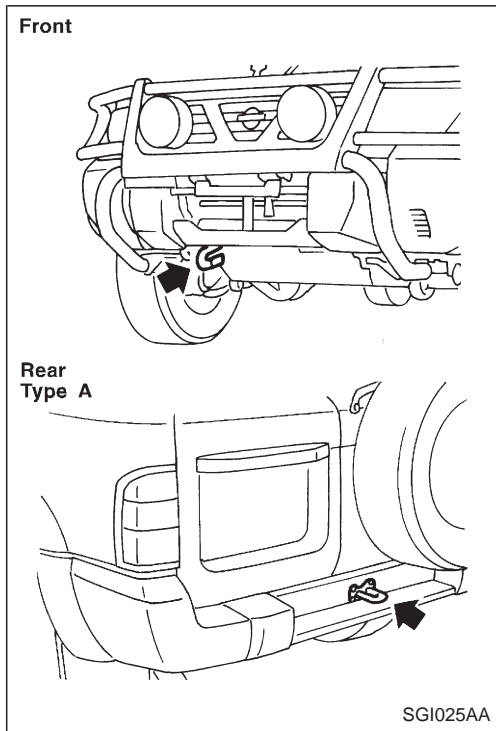
WARNING:

- Never get under the vehicle while it is supported only by the jack. Always use safety stands to support the frame when you have to get under the vehicle.
- Place wheel chocks at both front and back of the wheel which is diagonally opposite the jack position.
Example: If the jack is positioned at the LH front wheel, place wheel chocks at RH rear wheel.
- A 2-pole lift is not recommended because it may become unbalance when the vehicle is on it.
- Jack up the vehicle only under no load conditions.

Screw Jack



LIFTING POINTS AND TOW TRUCK TOWING



Tow Truck Towing

TOWING HOOKS

The towing hooks are provided only for emergency.

- Use the towing hooks **only**, not other parts of the vehicle. Otherwise, the vehicle body will be damaged.
- Use the towing hooks **only** to free a vehicle stuck in sand, snow, mud, etc. **Never** tow the vehicle for long distances using only the towing hooks.
- The towing hook is under tremendous force when used to free a stuck vehicle. Always pull the cable straight out from the front or rear of the vehicle. **Never** pull on the hook at a sideways angle.