

SECTION BT

MODIFICATION NOTICE:

- The door trim has been changed.
- The front seat with side air bag has been added.
- An auto reverse function has been added to the driver's door window.

CONTENTS

<b>PRECAUTIONS</b> .....	1002	<b>INTERIOR TRIM</b> .....	1004
Supplemental Restraint System (SRS) "AIR		Door Trim .....	1004
BAG" and "SEAT BELT PRE-TENSIONER" ...	1002	<b>SEAT</b> .....	1006
<b>DOOR</b> .....	1003	Front Seat .....	1006
Front Door Limit Switch Reset (Driver side		<b>MIRROR</b> .....	1007
only) .....	1003	Door Mirror .....	1007

## PRECAUTIONS

---

### Supplemental Restraint System (SRS) “AIR BAG” and “SEAT BELT PRE-TENSIONER”

The Supplemental Restraint System such as “AIR BAG” and “SEAT BELT PRE-TENSIONER” used along with a seat belt, helps to reduce the risk or severity of injury to the driver and front passenger for certain types of collision. The SRS system composition which is available to NISSAN MODEL Y61 is as follows (The composition varies according to the destination and optional equipment.):

- For a frontal collision  
The Supplemental Restraint System consists of driver air bag module (located in the center of the steering wheel), front passenger air bag module (located on the instrument panel on passenger side), seat belt pre-tensioners, a diagnosis sensor unit, warning lamp, wiring harness and spiral cable.
- For a side collision  
The Supplemental Restraint System consists of front side air bag module (located in the outer side of front seat), satellite sensor, diagnosis sensor unit (one of components of air bags for a frontal collision), wiring harness, warning lamp (one of components of air bags for a frontal collision).

Information necessary to service the system safely is included in the **RS section** of this Service Manual.

#### **WARNING:**

- To avoid rendering the SRS inoperative, which could increase the risk of personal injury or death in the event of a collision which would result in air bag inflation, all maintenance should be performed by an authorized NISSAN dealer.
- Improper maintenance, including incorrect removal and installation of the SRS, can lead to personal injury caused by intentional activation of the system. For removal of Spiral Cable and Air Bag Module, see the RS section.
- Do not use electrical test equipment on any circuit related to the SRS unless instructed to in this Service Manual. Spiral cable and wiring harnesses covered with yellow insulation tape either just before the harness connectors or for the complete harness are related to the SRS.

## DOOR

---

### Front Door Limit Switch Reset (Driver side only)

#### RESET CONDITIONS

After each of the following operations are performed, reset the limit switch (with built-in motor).

- Regulator removal and installation
- Removal of motor from regulator
- Operation of regulator as a single unit
- Door glass removal and installation
- Glass run removal and installation

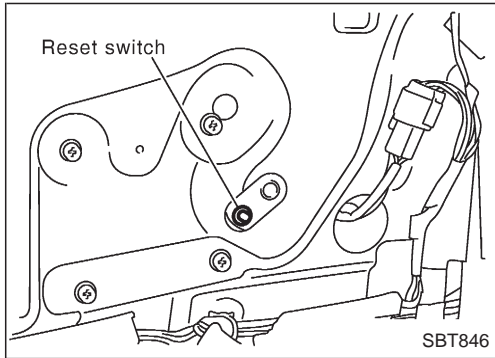
#### RESET PROCEDURES

After installing parts, proceed as follows:

1. Close the door window completely.
2. Press the reset switch and open the door window completely.
3. Release the reset switch. After making sure the reset switch has returned to the original position, close the door window completely.
4. The limit switch is now reset.

#### CAUTION:

**Be sure to manually open or close the door window. (Do not use the automatic open-close procedures.)**



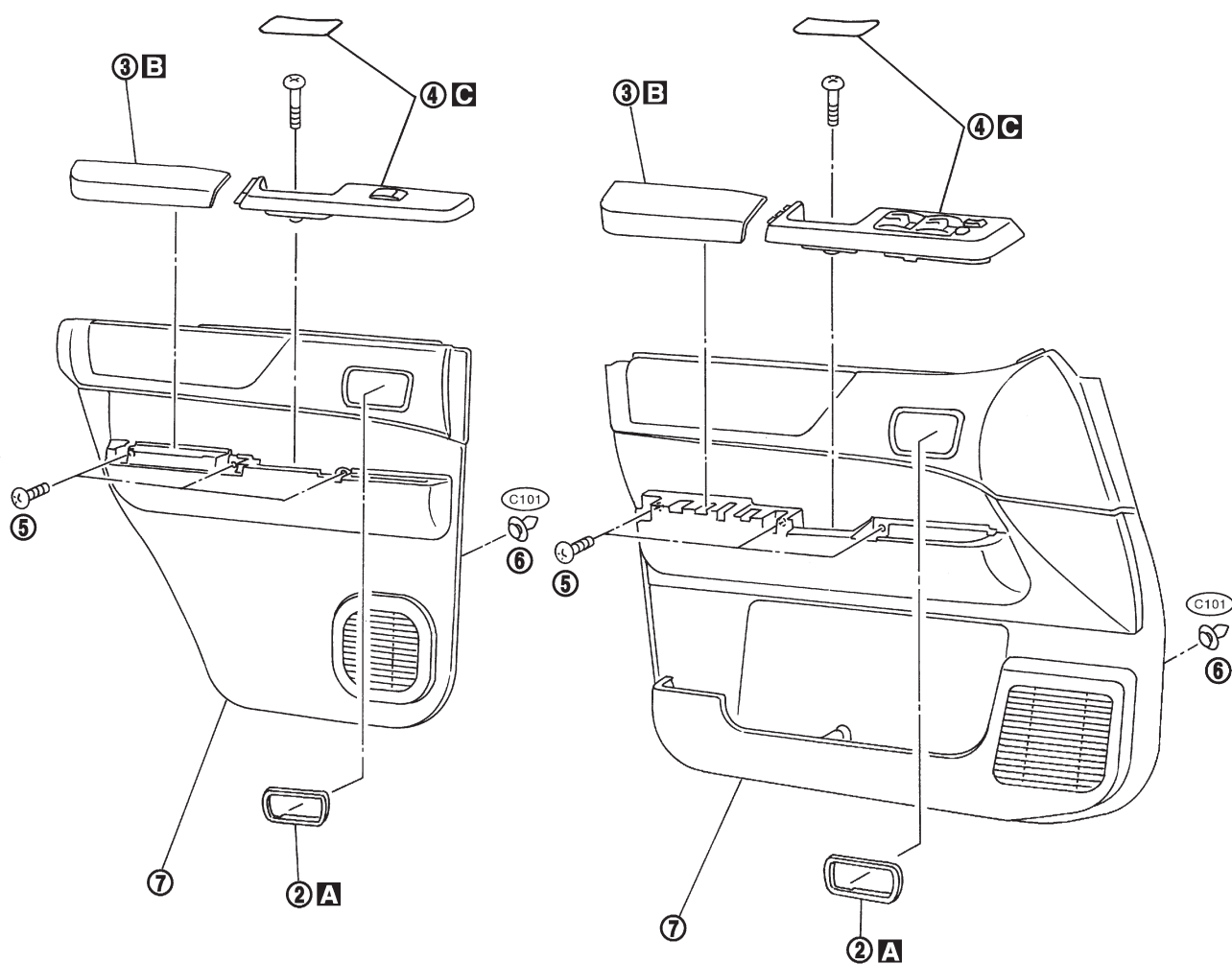
# INTERIOR TRIM

## Door Trim

### REMOVAL — Door trim

- ① Remove inner cover from front corner of door. Refer to “Door Mirror” for details, BT-1007.
- ② Remove inside handle escutcheon. **A**
- ③ Remove door armrest. **B**
- ④ Remove cover and screw securing power window switches, then disconnect the connector. **C**
- ⑤ Remove screw securing door trim.
- ⑥ Remove clips securing door trim.
- ⑦ Lift out door trim.

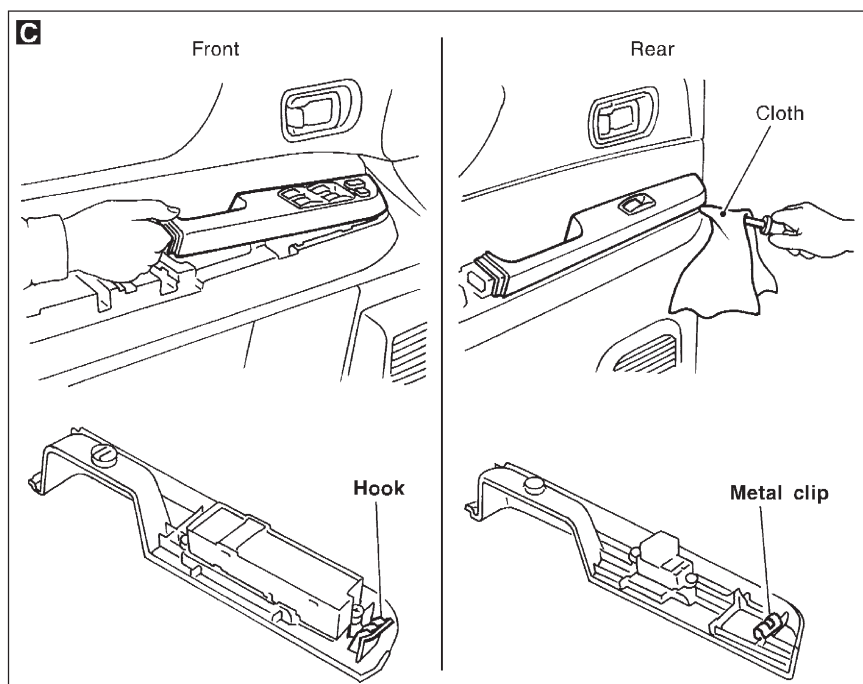
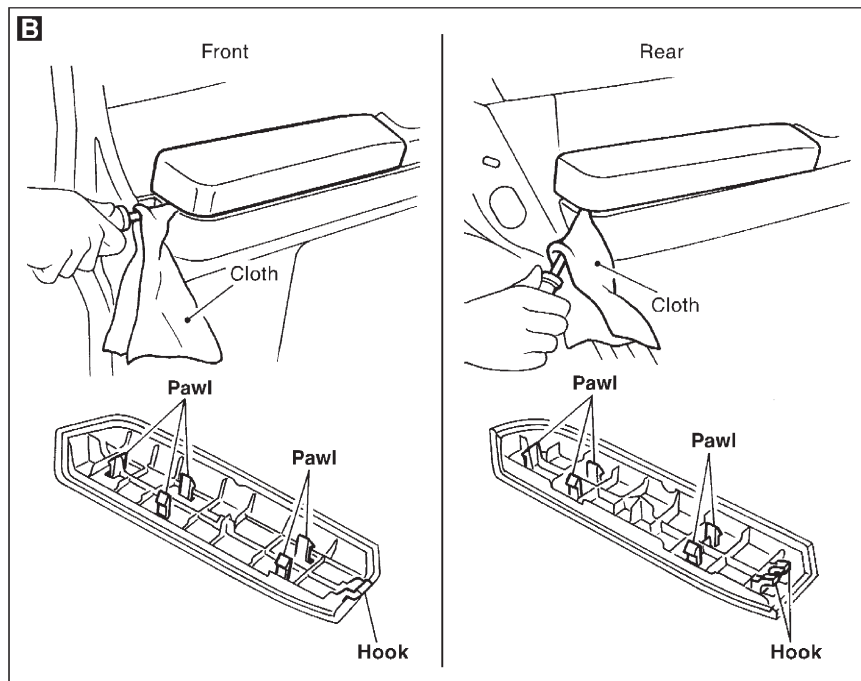
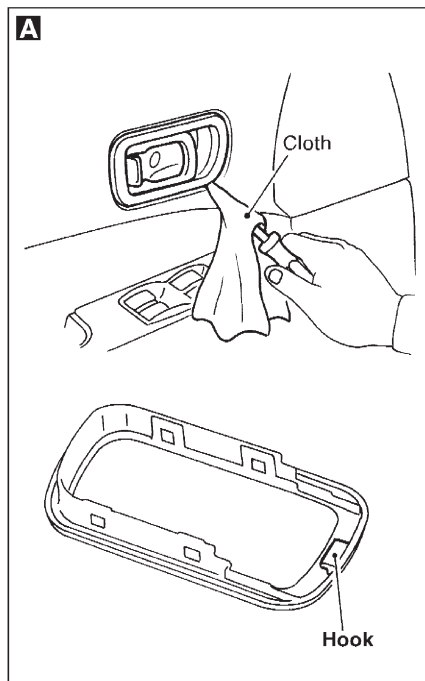
SEC. 251•809•828



SBT847

## INTERIOR TRIM

### Door Trim (Cont'd)



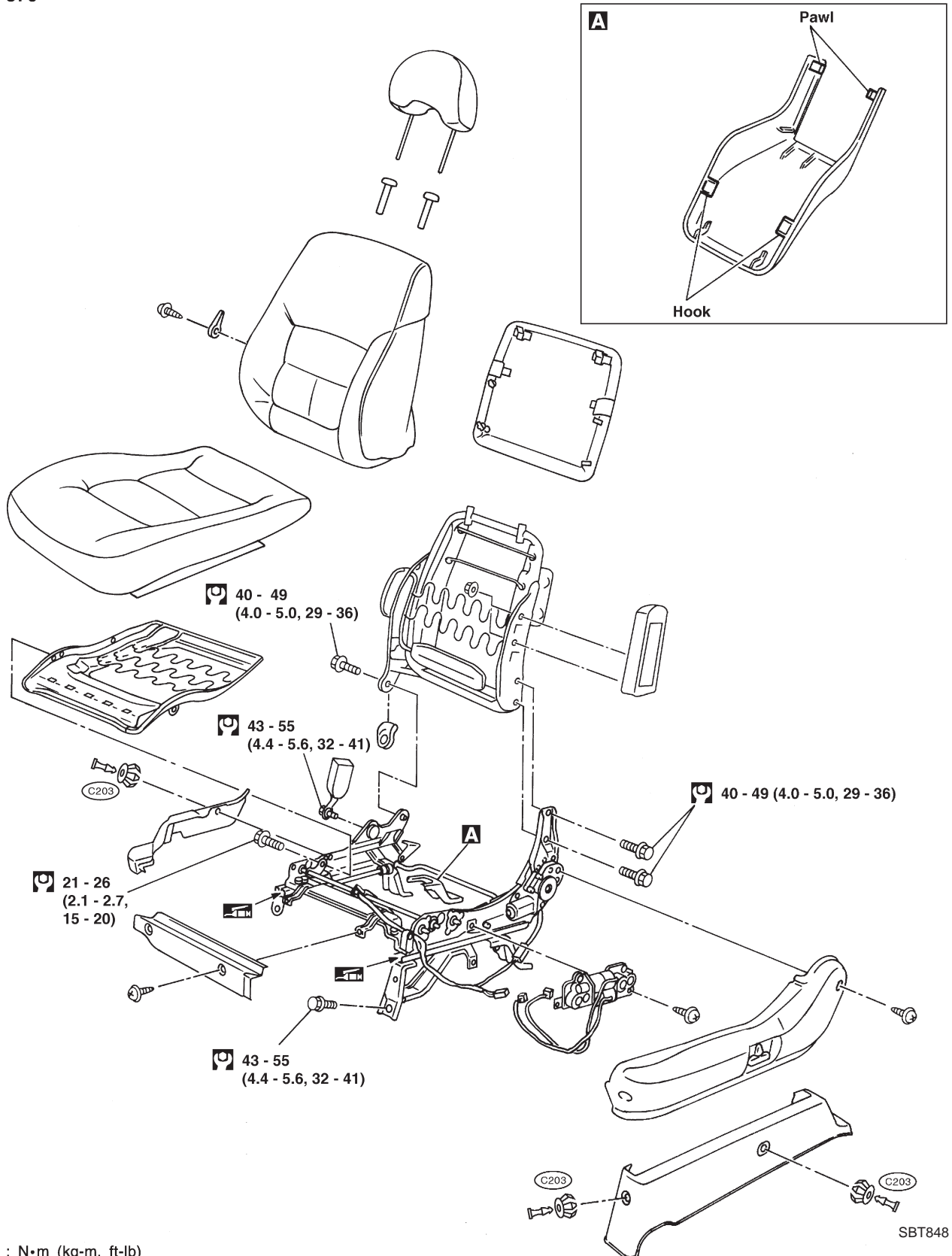
# SEAT

## Front Seat

- When removing or installing the seat trim, carefully handle it to keep dirt out and avoid damage.

### POWER SEAT

SEC. 870



: N•m (kg•m, ft•lb)

BT-1006

# MIRROR

## Door Mirror

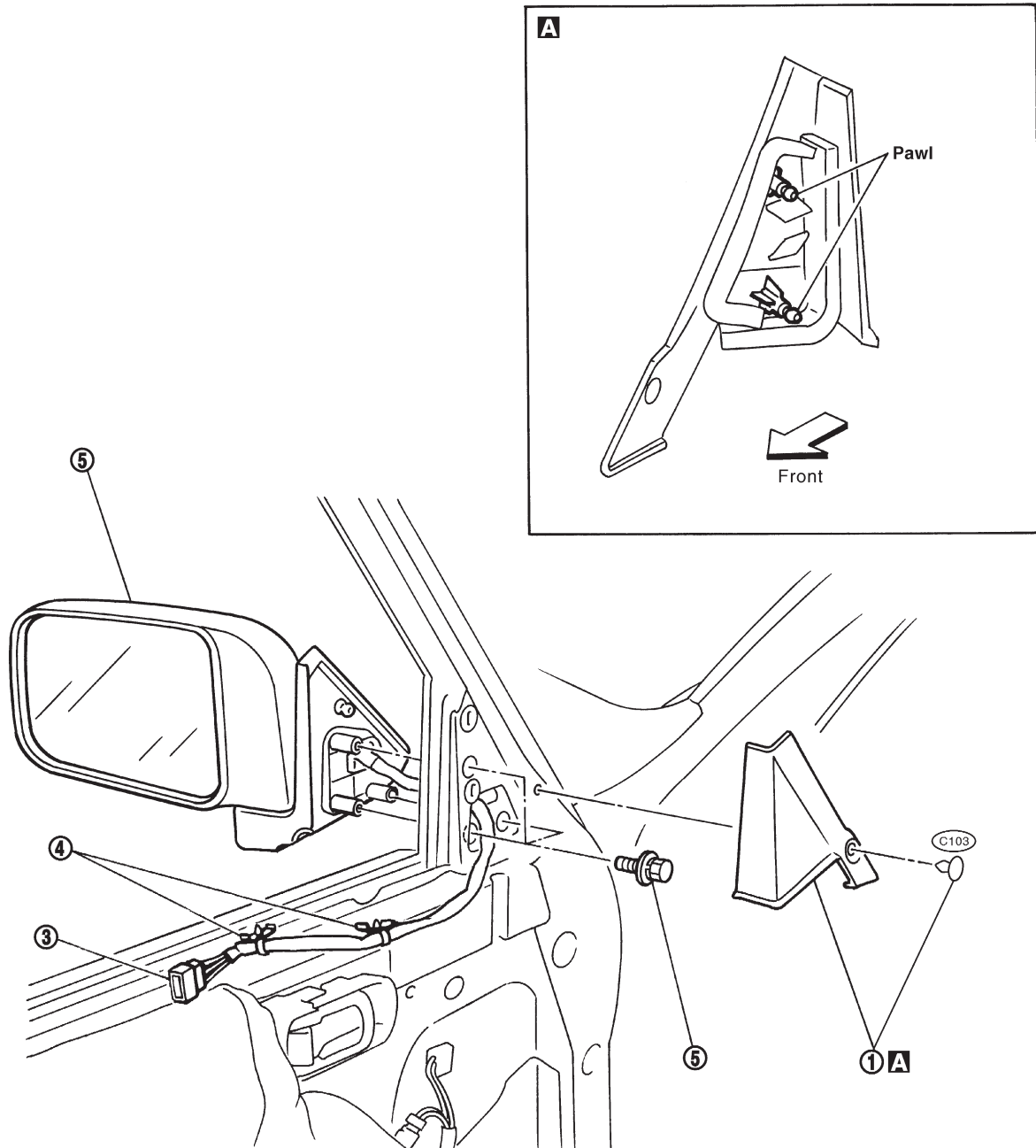
### CAUTION:

Be careful not to scratch door rearview mirror body.

★ For Wiring Diagram, refer to “POWER DOOR MIRROR” in EL section.

### REMOVAL — Door mirror

- ① Remove clip securing inner cover, then remove inner cover.
- ② Remove door trim. Refer to “Door Trim” for details, BT-1004.
- ③ Roll back sealing screen and remove door mirror harness connector.
- ④ Remove door mirror harness clip.
- ⑤ Remove bolts securing door mirror, then remove door mirror assembly.



SBT849