

SECTION **IP**

INSTRUMENT PANEL

A
B
C

D

E

F
G
H
IP
J
K
L
M

CONTENTS

PRECAUTIONS	2	CLUSTER LID FINISHER	7
Precautions for Supplemental Restraint System (SRS) "AIR BAG" and "SEAT BELT PRE-TENSIONER"	2	AUDIO UNIT AND POCKET	7
Precautions	2	HEATER CONTROL FINISHER	8
INSTRUMENT PANEL ASSEMBLY	3	CD AUTO-CHANGER AND POCKET	8
Component Parts Drawing	3	HEATER CONTROLLER	8
Removal and Installation	5	A/T OR M/T FINISHER	8
TABLE OF WORK ITEM	5	CONSOLE MASK AND CENTER CONSOLE	8
FRONT SPEAKER GRILLE	6	LOWER INSTRUMENT COVER	8
INSTRUMENT FINISHER	6	INSTRUMENT LOWER CENTER PANEL	8
CUP HOLDER	6	GLOVE BOX	9
CLUSTER LID A	6	LOWER INSTRUMENT PANEL	9
COMBINATION METER	6	GLOVE BOX COVER	9
POCKET	6	FRONT PASSENGER AIR BAG MODULE	9
STEERING COLUMN COVER	6	INSTRUMENT REINFORCEMENT	9
INSTRUMENT LOWER DRIVER PANEL	7	INSTRUMENT MASK	9
MIRROR CONTROL SWITCH	7	FRONT PILLAR GARNISH	9
GPS ANTENNA	7	INSTRUMENT PANEL	9
CLUSTER LID C	7	Disassembly and Assembly	10
		CONSOLE BOX ASSEMBLY	10

PRECAUTIONS

PRECAUTIONS

PFP:00001

Precautions for Supplemental Restraint System (SRS) “AIR BAG” and “SEAT BELT PRE-TENSIONER”

EIS0046I

The Supplemental Restraint System such as “AIR BAG” and “SEAT BELT PRE-TENSIONER”, used along with a front seat belt, helps to reduce the risk or severity of injury to the driver and front passenger for certain types of collision. Information necessary to service the system safely is included in the SRS and SB section of this Service Manual.

WARNING:

- To avoid rendering the SRS inoperative, which could increase the risk of personal injury or death in the event of a collision which would result in air bag inflation, all maintenance must be performed by an authorized NISSAN/INFINITI dealer.
- Improper maintenance, including incorrect removal and installation of the SRS, can lead to personal injury caused by unintentional activation of the system. For removal of Spiral Cable and Air Bag Module, see the SRS section.
- Do not use electrical test equipment on any circuit related to the SRS unless instructed to in this Service Manual. SRS wiring harnesses can be identified by yellow and/or orange harness connectors.

Precautions

EIS001NZ

- Disconnect both battery cables in advance.
- Disconnect air bag system line in advance.
- Never tamper with or force air bag lid open, as this may adversely affect air bag performance.
- Be careful not to scratch pad and other parts.
- When removing or disassembling any part, be careful not to damage or deform it. Protect parts, which may get in the way with cloth.
- When removing parts with a screwdriver or other tool, protect parts by wrapping them with vinyl or tape.
- Keep removed parts protected with cloth.
- If a clip is deformed or damaged, replace it.
- If an unreusable part is removed, replace it with a new one.
- Tighten bolts and nuts firmly to the specified torque.
- After re-assembly has been completed, make sure each part functions correctly.
- Remove stains in the following way.

Water-soluble stains:

Dip a soft cloth in warm water, and then squeeze it tightly. After wiping the stain, wipe with a soft dry cloth.

Oil stain:

Dissolve a synthetic detergent in warm water (density of 2 to 3% or less), dip the cloth, then clean off the stain with the cloth. Next, dip the cloth in fresh water and squeeze it tightly. Then clean off the detergent completely. Then wipe the area with a soft dry cloth.

- Do not use any organic solvent, such as thinner or benzene.

INSTRUMENT PANEL ASSEMBLY

INSTRUMENT PANEL ASSEMBLY

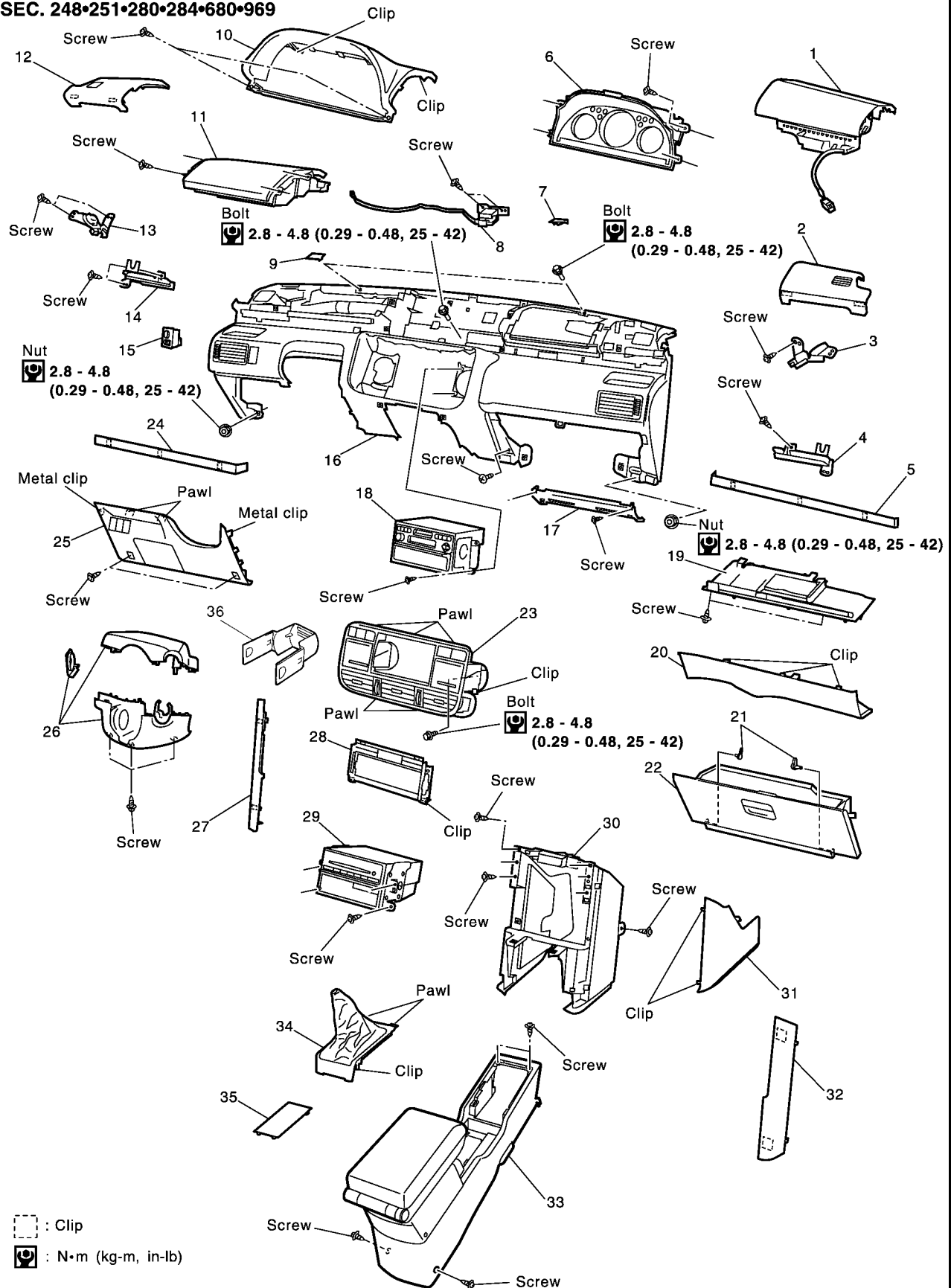
PFP:68200

Component Parts Drawing

EIS000NH

A
B
C
D
E
F
G
H
IP
J
K
L
M

SEC. 248•251•280•284•680•969



SIIA0225E

INSTRUMENT PANEL ASSEMBLY

- | | | |
|-----------------------------------|---|-----------------------------------|
| 1. Front passenger air bag module | 2. Front speaker grille (right) | 3. Front side speaker (right) |
| 4. Cup holder (right) | 5. Instrument finisher B | 6. Combination meter |
| 7. Instrument mask (right) | 8. GPS antenna | 9. Instrument mask (left) |
| 10. Instrument cluster lid A | 11. Pocket | 12. Front speaker grille (left) |
| 13. Front side speaker (left) | 14. Cup holder (left) | 15. Mirror control switch |
| 16. Instrument panel & pad | 17. Instrument reinforcement | 18. Audio unit and pocket |
| 19. Glove box cover | 20. Lower instrument panel | 21. Glove box pin |
| 22. Glove box | 23. Cluster lid C | 24. Instrument finisher A |
| 25. Instrument lower driver panel | 26. Column cover, key cylinder escutcheon | 27. Cluster lid finisher (left) |
| 28. Heater control finisher | 29. CD auto-changer and pocket | 30. instrument lower center panel |
| 31. Lower instrument cover | 32. Cluster lid finisher (right) | 33. Center console |
| 34. A/T or M/T finisher | 35. Console mask | 36. Seal case (inner case) |

INSTRUMENT PANEL ASSEMBLY

Removal and Installation TABLE OF WORK ITEM

EIS000NI

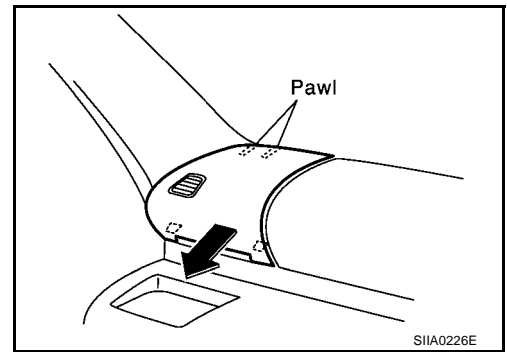
Components	Instrument panel	Combination meter	Navigation Display	Audio		Console
				Up	Down	
Front speaker grille	[1]					
Instrument finisher A, B	[2]	[1]				
Cup holder	[3]					
Instrument cluster lid A	[4]	[2]				
Combination meter	[5]	[3]				
Pocket	[6]					
Key cylinder escutcheon and steering column cover	[7]					
Instrument lower driver panel	[8]					
Mirror control switch	[9]					
GPS antenna	[10]					
Cluster lid C	[11]		[1]	[1]		
Cluster lid finisher	[12]				[1]	[1]
Audio unit and pocket	[13]		[2]	[2]		
Heater control finisher	[14]				[2]	
CD auto-changer and pocket	[15]				[3]	
Heater controller	[16]					
A/T(M/T,CVT) finisher	[17]					[2]
Console mask	[18]					[3]
Center console	[19]					[4]
Lower instrument cover	[20]					
instrument lower center panel	[21]					
Glove box	[22]					
Lower instrument panel	[23]					
Glove box cover	[24]					
Front passenger air bag module	[25]					
Instrument reinforcement	[26]					
Instrument mask	[27]					
Front pillar garnish	[28]					
Instrument panel	[29]					

[]: The number shows the removal order.

INSTRUMENT PANEL ASSEMBLY

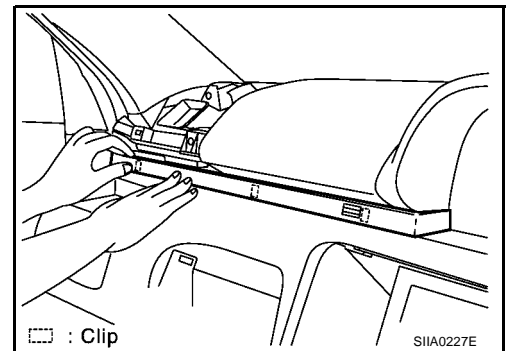
FRONT SPEAKER GRILLE

- Pull forward and remove front speaker grille.



INSTRUMENT FINISHER

- Remove clips starting from the outside.

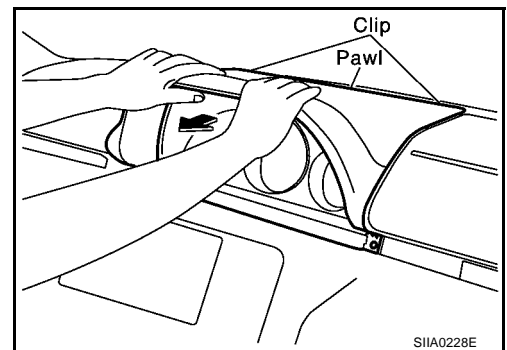


CUP HOLDER

- Remove screws and remove cup holder.

CLUSTER LID A

- Remove screws, and pull instrument cluster lid A forward to unfasten clip.



COMBINATION METER

- Remove screws, and remove connector. Then remove combination meter.

POCKET

- Remove screws and remove pocket.

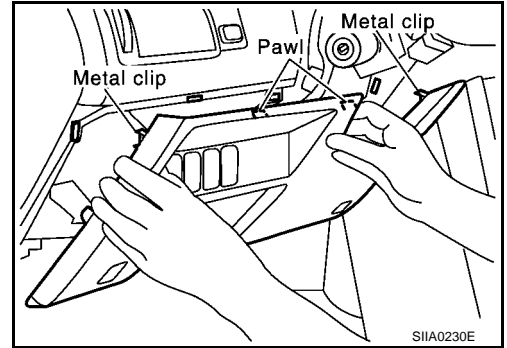
STEERING COLUMN COVER

- Remove key cylinder escutcheon first. Remove screws.

INSTRUMENT PANEL ASSEMBLY

INSTRUMENT LOWER DRIVER PANEL

- Remove screws, and pull driver-side instrument lower panel straight forward to unfasten the clip.



MIRROR CONTROL SWITCH

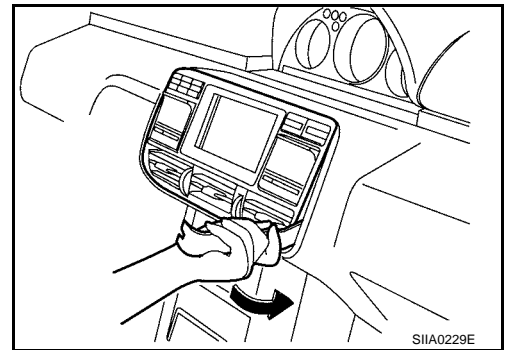
1. From the back, press tab on mirror control switch to remove. Or insert a screwdriver, wrapped with a cloth, into lower side of the switch to unfasten the lower clip.
2. Disconnect connector and then remove mirror control switch.

GPS ANTENNA

- Remove screws and Disconnect connector.

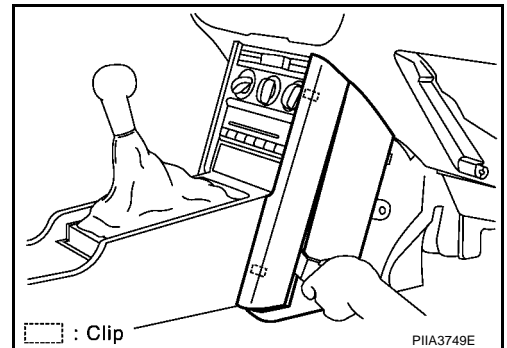
CLUSTER LID C

1. Insert a clip remover or similar tool into lower side of cluster lid C and unfasten clip.
2. Unfasten resin tabs on upper and lower sides and remove cluster lid C.



CLUSTER LID FINISHER

- Insert a clip clamp remover or similar tool into center panel gap and unfasten clip.



AUDIO UNIT AND POCKET

Remove mounting screws on audio unit and pocket. Disconnect connector and remove audio unit and pocket.

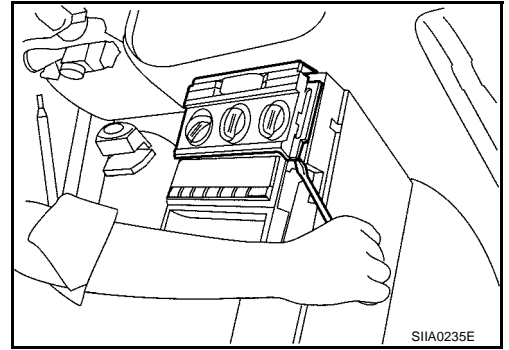
NOTE:

During removal or installation, use cloth to protect surrounding area from damage.

INSTRUMENT PANEL ASSEMBLY

HEATER CONTROL FINISHER

- Insert a screwdriver or similar tool, wrapped with a cloth, into lower edge (clip position). Unfasten clip and remove heater control finisher.



CD AUTO-CHANGER AND POCKET

- Remove screws. Disconnect connector and remove CD auto changer and pocket.

NOTE:

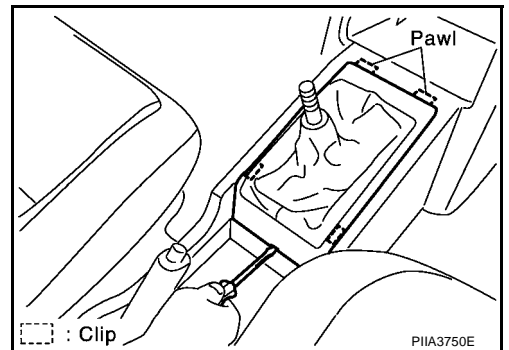
During removal or installation, use cloth to protect surrounding area from damage.

HEATER CONTROLLER

- Remove mounting screws on heater controller. Disconnect connector and remove heater controller.

A/T OR M/T FINISHER

1. Insert a screwdriver, wrapped with a cloth, into cutout on rear edge of finisher, and lift up to unfasten clip on rear edge of side face.
2. Pull forward and remove finisher.

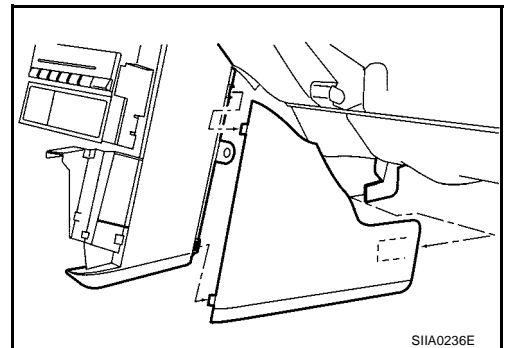


CONSOLE MASK AND CENTER CONSOLE

1. Remove screws.
2. Remove console mask, and remove center console.

LOWER INSTRUMENT COVER

- Unfasten resin clips, and pull toward vehicle rear.



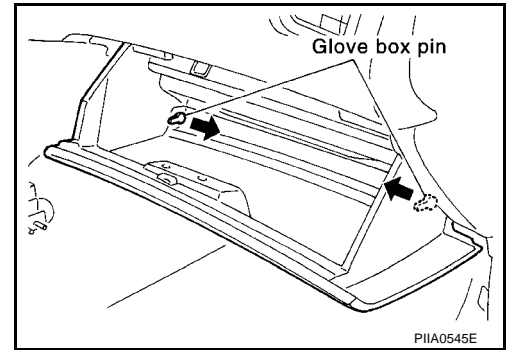
INSTRUMENT LOWER CENTER PANEL

- Remove screws and then remove instrument lower center panel.

INSTRUMENT PANEL ASSEMBLY

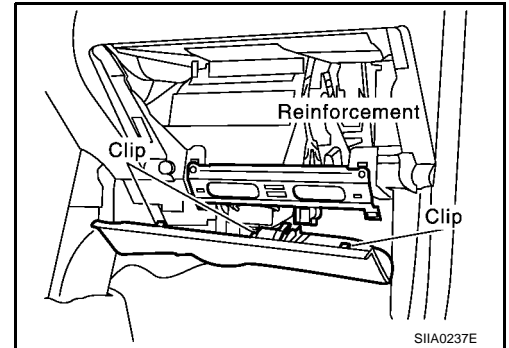
GLOVE BOX

- Open glove box, and remove glove box pin from inside.



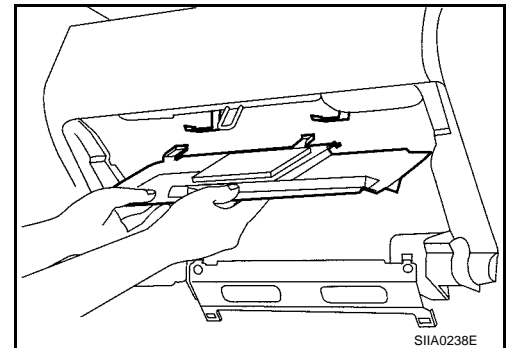
LOWER INSTRUMENT PANEL

- Pull clips forward from instrument reinforcement, and then remove tab inside instrument lower panel from lower edge of blower unit.



GLOVE BOX COVER

1. Remove screws.
2. Pull straight forward to remove from steering member bracket.



FRONT PASSENGER AIR BAG MODULE

- Remove mounting bolts. Remove front passenger air bag module. Refer to [SRS-35, "FRONT PASSENGER AIR BAG MODULE"](#).

INSTRUMENT REINFORCEMENT

- Remove screws.
- Remove instrument reinforcement.

INSTRUMENT MASK

- Insert a slotted screwdriver, wrapped with a cloth, into cutout on the instrument mask. Unfasten tab and remove instrument mask.

FRONT PILLAR GARNISH

- Pull front pillar garnish straight forward to inner side of vehicle. Unfasten metal clip and remove front pillar garnish.

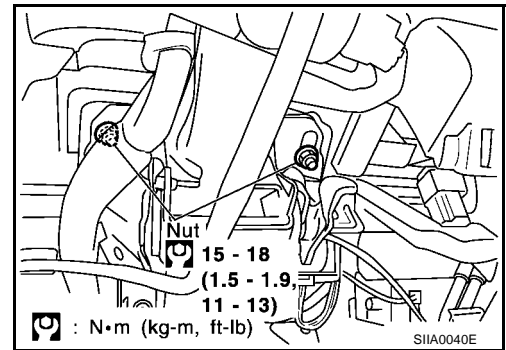
Refer to [EI-26, "BODY SIDE TRIM"](#).

INSTRUMENT PANEL

1. Remove key interlock cable. Refer to [AT-412, "KEY INTERLOCK CABLE"](#).

INSTRUMENT PANEL ASSEMBLY

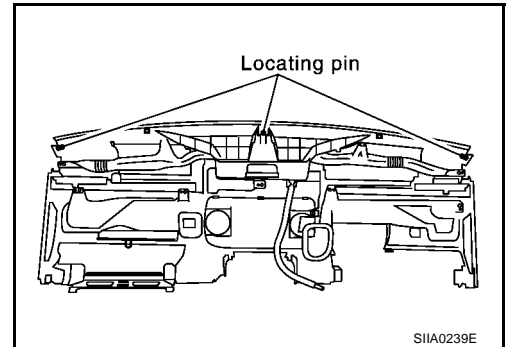
2. Remove nuts, and lower steering column.



3. Remove bolts, nuts and screw from the instrument panel, and remove the instrument panel.

NOTE:

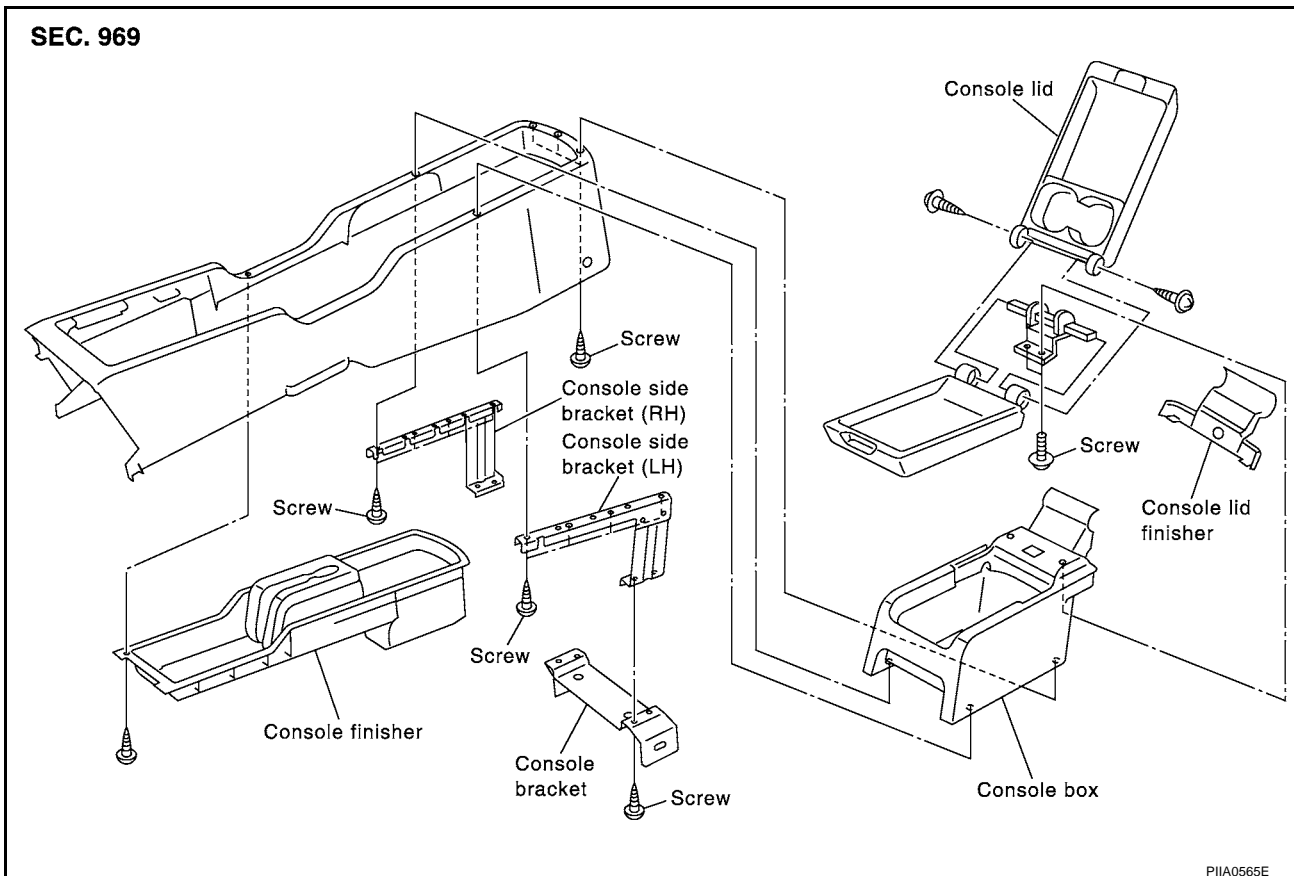
When installing, check that the locating pin on back of the instrument panel is completely seated in locating hole on body.



Disassembly and Assembly CONSOLE BOX ASSEMBLY

EIS00100

SEC. 969



1. Remove console lid.
2. Remove mounting screws on console bracket.
3. Remove mounting screws on console side bracket (RH/LH) and console box.
4. Remove mounting screws on console finisher.