

SECTION **IP**

INSTRUMENT PANEL

A
B
C
D
E
F
G
H
IP
J
K
L
M

CONTENTS

PRECAUTIONS	2	WORK ITEM TABLE	5
Precautions for Supplemental Restraint System (SRS) "AIR BAG" and "SEAT BELT PRE-TENSIONER"	2	REMOVAL	5
Precautions	2	REMOVAL AND INSTALLATION OF INSTRUMENT PAD	9
CLIP AND FASTENER	3	REMOVAL AND INSTALLATION OF CONSOLE BOX.	9
List of Table	3	CONSOLE BOX	10
INSTRUMENT PANEL ASSEMBLY	4	Disassembly and Assembly	11
Component Parts Location	4	INSTRUMENT PANEL PAD	11
Removal and Installation	5	GLOVE BOX COVER ASSEMBLY	11

PRECAUTIONS

PRECAUTIONS

PFP:00001

Precautions for Supplemental Restraint System (SRS) “AIR BAG” and “SEAT BELT PRE-TENSIONER”

EIS004OW

The Supplemental Restraint System such as “AIR BAG” and “SEAT BELT PRE-TENSIONER”, used along with a front seat belt, helps to reduce the risk or severity of injury to the driver and front passenger for certain types of collision. Information necessary to service the system safely is included in the SRS and SB section of this Service Manual.

WARNING:

- To avoid rendering the SRS inoperative, which could increase the risk of personal injury or death in the event of a collision which would result in air bag inflation, all maintenance must be performed by an authorized NISSAN/INFINITI dealer.
- Improper maintenance, including incorrect removal and installation of the SRS, can lead to personal injury caused by unintentional activation of the system. For removal of Spiral Cable and Air Bag Module, see the SRS section.
- Do not use electrical test equipment on any circuit related to the SRS unless instructed to in this Service Manual. SRS wiring harnesses can be identified by yellow and/or orange harnesses or harness connectors.

Precautions

EIS004OX

- Disconnect both battery cables in advance.
- Disconnect air bag system line in advance.
- Never tamper with or force air bag lid open, as this may adversely affect air bag performance.
- Be careful not to scratch pad and other parts.
- When removing or disassembling any part, be careful not to damage or deform it. Protect parts, which may get in the way with cloth.
- When removing parts with a screwdriver or other tool, protect parts by wrapping them with vinyl or tape.
- Keep removed parts protected with cloth.
- If a clip is deformed or damaged, replace it.
- If an unreuseable part is removed, replace it with a new one.
- Tighten bolts and nuts firmly to the specified torque.
- After re-assembly has been completed, make sure each part functions correctly.
- Remove stains in the following way.

Water-soluble stains:

Dip a soft cloth in warm water, and then squeeze it tightly. After wiping the stain, wipe with a soft dry cloth.

Oil stain:

Dissolve a synthetic detergent in warm water (density of 2 to 3% or less), dip the cloth, then clean off the stain with the cloth. Next, dip the cloth in fresh water and squeeze it tightly. Then clean off the detergent completely. Then wipe the area with a soft dry cloth.

- Do not use any organic solvent, such as thinner or benzene.

CLIP AND FASTENER

PFP:76906

List of Table

EIS0040H

A

B

C

D

E

F

G

H


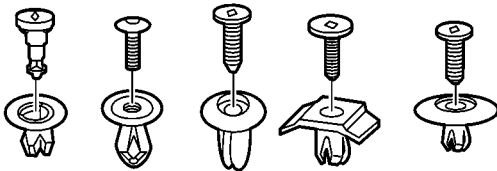

IP

J

K

L

M

Symbol No.	Shape	Removal and installation
CS101 		Removal: 1. Screw out with a Phillips screwdriver. 2. Remove female portion with flat-bladed screwdriver. 

MIB0017E

INSTRUMENT PANEL ASSEMBLY

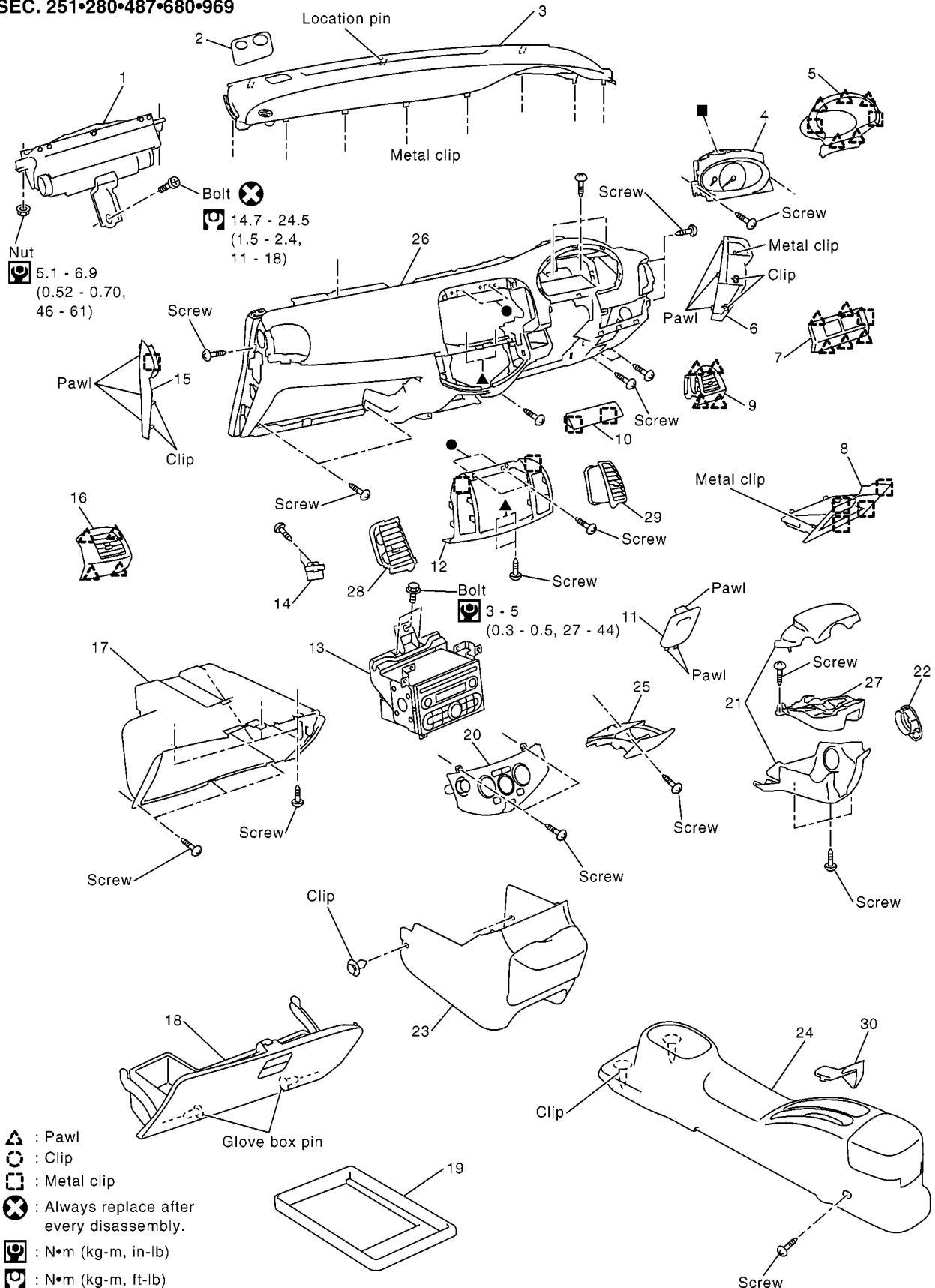
INSTRUMENT PANEL ASSEMBLY

PFP:68200

Component Parts Location

EIS0040I

SEC. 251•280•487•680•969



MIB9279E

INSTRUMENT PANEL ASSEMBLY

- | | | |
|------------------------------------|------------------------------------|--------------------------------|
| 1. Passenger air bag module | 2. Instrument mask | 3. Upper instrument panel |
| 4. Combination meter | 5. Cluster lid "A" | 6. Instrument side mask (RH) |
| 7. Switch panel finisher | 8. Instrument panel under tray | 9. Side ventilator grille (RH) |
| 10. Instrument finisher | 11. Fuse block lid | 12. Cluster lid C |
| 13. Audio | 14. Glove box striker | 15. Instrument side mask (LH) |
| 16. Side ventilator grille (LH) | 17. Glove box cover assembly | 18. Glove box lid |
| 19. Tray | 20. Air conditioner finisher | 21. Steering column cover |
| 22. Steering lock escutcheon | 23. Instrument panel stay cover | 24. Console box |
| 25. Coin holder | 26. Instrument panel & pad | 27. Steering column protector |
| 28. Central ventilator grille (LH) | 29. Central ventilator grille (RH) | 30. Console mask |

Removal and Installation WORK ITEM TABLE

EIS004OJ

Component Parts Location		Instrument panel &Brake pad	Instrument pad	Upper instrument panel	Combination meter	Audio, Car-Wings unit
A. Windshield finisher (C+C)	IP-5	[1]	[1]	[1]	[1]	[1]
B. Front pillar garnish	IP-5	[2]	[2]	[2]	[2]	[2]
C. Upper instrument panel	IP-6	[3]	[3]	[3]	[3]	[3]
D. Steering lock escutcheon	IP-6	[4]	[4]			
E. Instrument panel under tray	IP-6	[5]				
F. Switch panel finisher	IP-6	[6]	[5]			
G. Steering column cover	IP-6	[7]	[6]		[4]	
H. Combination switch	IP-6	[8]	[7]			
I. Cluster lid "A"	IP-7	[9]	[8]		[5]	
J. Combination meter	IP-7	[10]	[9]		[6]	
K. Instrument finisher	IP-7	[11]	[10]			[4]
L. Cluster lid C	IP-7	[12]	[11]			[5]
M. Air conditioner finisher	IP-7	[13]				
N. Instrument panel stay cover	IP-8	[14]				
O. Glove box lid	IP-8	[15]	[12]			
P. Glove box cover assembly	IP-8	[16]	[13]			
Q. Side ventilator grille	IP-8	[17]	[14]			
R. Instrument side mask	IP-8	[18]	[15]			
S. Passenger seat air bag module	IP-8	[19]	[16]			
T. Steering wheel	IP-8	[20]				
U. Instrument panel & pad	IP-9	[21]				
V. Instrument pad	IP-9		[17]			

[]: The number shows the removal order.

REMOVAL

A. Windshield finisher (C+C)

Refer to [EI-36, "WINDSHIELD FINISHER"](#) in EI section.

B. Front Pillar Garnish

Refer to [EI-25, "BODY SIDE TRIM"](#) in EI section.

INSTRUMENT PANEL ASSEMBLY

C. Upper Instrument Panel

1. Insert a screwdriver wrapped with cloth into the instrument mask back notch to remove the instrument mask. When vehicle has sunload sensor, disconnect the sensor harness. Refer to [ATC-75, "SUNLOAD SENSOR"](#) in ATC section.
2. Insert a screwdriver, etc., wrapped with cloth into the upper instrument panel passenger side back edge and disengage metal clips and lift up panel.
3. Hold the lifted up part by hand, remove metal clips engaged in instrument pad, and remove upper instrument panel.

D. Steering Lock Escutcheon

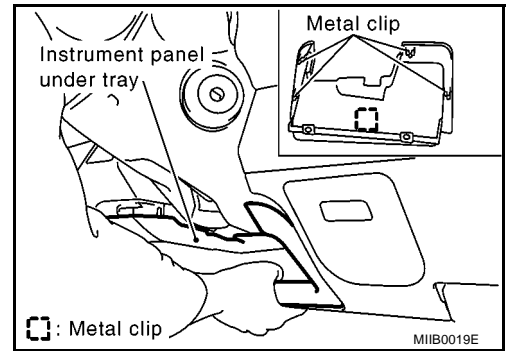
Pull toward vehicle and remove.

CAUTION:

To install, align key cylinder end bottom protrusion with escutcheon inside notch and install.

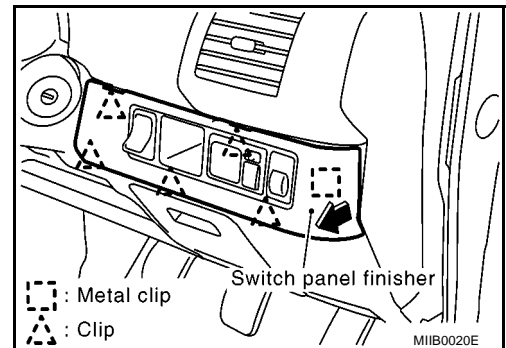
E. Instrument Panel Under Tray

1. Disengage upper metal clips, hold bottom lid by hand, pull panel forward, and disengage metal clips.
2. Remove being careful of interference from surrounding metal objects.



F. Switch Panel Finisher

Hold lid side (arrow area) by hand, disengage metal clips, and then pull forward and disengage plastic clips to remove.



G. Steering Column Cover

Upper

1. To make it easier to remove lower side, face steering pad top downward. (Tilt right side at about 160°)
2. Tilt down steering column and remove screw (1) facing front of vehicle.
3. Disengage hooks and remove.

Lower

- Remove screws (3).

CAUTION:

Pull out being careful of interference with surrounding objects.

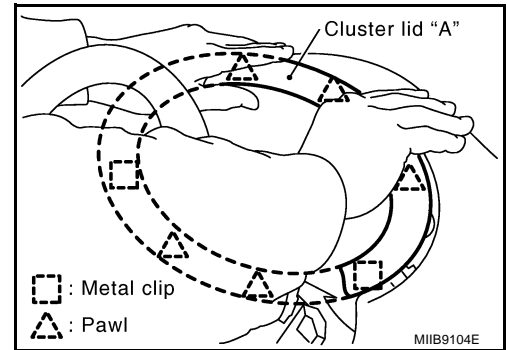
H. Combination Switch

Refer to [LT-222, "Removal and Installation"](#) in LT section.

INSTRUMENT PANEL ASSEMBLY

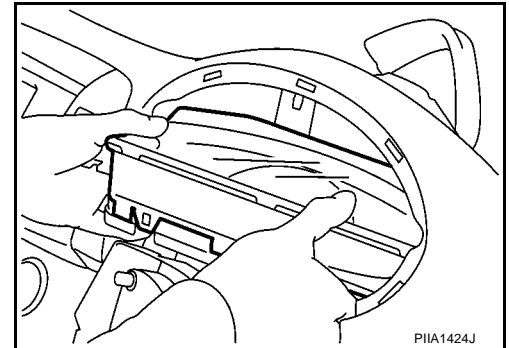
I. Cluster lid "A"

1. Tilt down steering column.
2. Pull cluster lid A forward and remove hooks and mounting clips.
3. While being careful of surrounding interference, remove from steering right side.



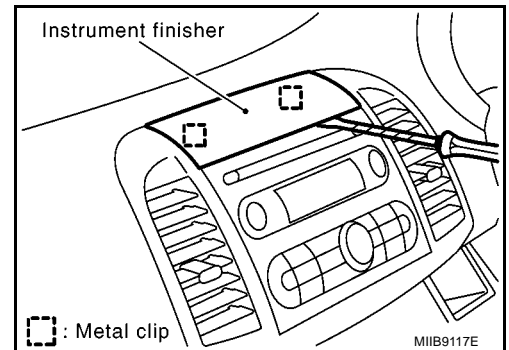
J. Combination Meter

After removing screws, remove harness connector, and then place combination meter top to the rear and remove.



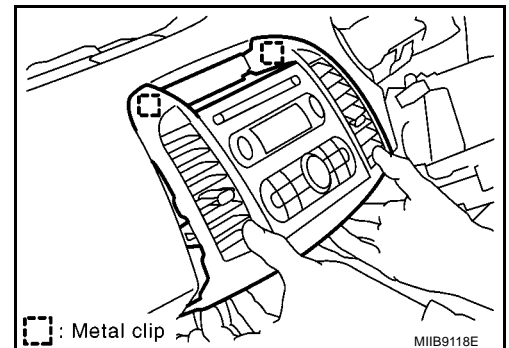
K. Instrument Finisher

- Insert a screwdriver wrapped with tape into the bottom of instrument finisher, and pull up and remove finisher.
- (Vehicles with pocket decks) Open pocket, insert a screwdriver wrapped with tape into the bottom of the instrument finisher at the top, and remove the finisher.



L. Cluster Lid C

1. Remove audio unit bracket bolt.
2. Remove screws (4) securing cluster lid C to instrument panel.
3. Pull cluster lid C out.
4. Disconnect antenna connector and audio harness connector.
5. After removal, separate the center ventilator grille and audio equipment. Refer to [ATC-88, "DUCTS AND GRILLES"](#) in ATC section, [MTC-60, "DUCTS AND GRILLES"](#) in MTC section and [AV-15, "Removal and Installation of Audio Unit"](#) in AV section.



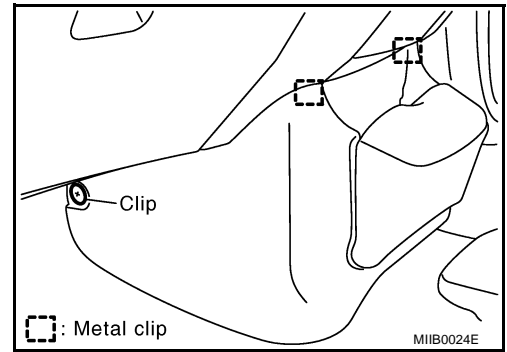
M. Air Conditioner Finisher

Refer to [ATC-71, "Removal and Installation"](#) in ATC section and [MTC-46, "Removal and Installation"](#) in MTC section.

INSTRUMENT PANEL ASSEMBLY

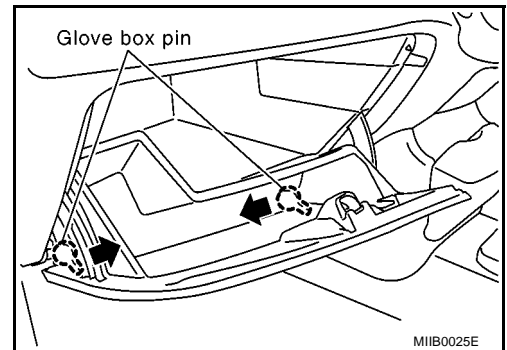
N. Instrument Panel Stay Cover

1. Remove at LH/RH mounting clips.
2. Pull instrument stay cover toward rear of vehicle, disengage metal clips, orient straight above cup holder, and remove.



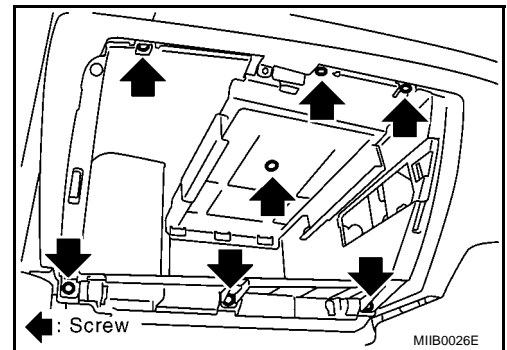
O. Glove Box Lid

1. Remove glove box pin and then remove glove box lid.



P. Glove Box Cover Assembly

1. Pull out tray (only vehicles equipped with tray).
2. Remove screws shown in figure, and then remove glove box cover assembly.
3. After removal, separate parts. Refer to [IP-11, "GLOVE BOX COVER ASSEMBLY"](#) in "Disassembly and Assembly".

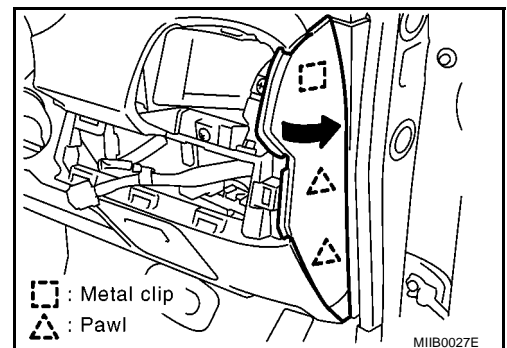


Q. Side Ventilator Grille

Refer to [ATC-88, "DUCTS AND GRILLES"](#) in ATC section and [MTC-60, "DUCTS AND GRILLES"](#) in MTC section.

R. Instrument Side Mask

1. Disengage metal clips and plastic hooks of instrument side mask and rotate instrument side mask to center of vehicle forward insertion area.
2. Disconnect airbag cut-off switch from harness (passenger side only).
3. Disengage airbag cut-off switch from instrument side mask (passenger side only).
4. Pull out inserted area of instrument side mask and remove from vehicle.



S. Passenger Seat Air Bag Module

Refer to [SRS-41, "FRONT PASSENGER AIR BAG MODULE"](#) in SRS section.

T. Steering Wheel

Refer to [SRS-37, "DRIVER AIR BAG MODULE"](#) and [SRS-39, "SPIRAL CABLE"](#) in SRS section.

INSTRUMENT PANEL ASSEMBLY

U. Instrument Panel & Pad

1. Tilt down steering column. A
2. Remove screws, and remove instrument panel and pad from passenger door opening.
3. After removal, separate parts. Refer to [IP-11, "INSTRUMENT PANEL PAD"](#) in "Disassembly and Assembly". B

V. Instrument Pad

1. Remove instrument pad screws (6). C
2. Remove metal clips (4) engaged in instrument panel, and remove instrument pad. D

REMOVAL AND INSTALLATION OF INSTRUMENT PAD

Removal

1. Remove windshield finisher (C+C). Refer to [IP-5, "A. Windshield finisher \(C+C\)"](#). E
2. Remove front pillar garnish. Refer to [IP-5, "B. Front Pillar Garnish"](#). F
3. Remove upper instrument panel. Refer to [IP-6, "C. Upper Instrument Panel"](#). G
4. Remove steering lock escutcheon. Refer to [IP-6, "D. Steering Lock Escutcheon"](#). H
5. Remove switch panel finisher. Refer to [IP-6, "F. Switch Panel Finisher"](#). I
6. Remove steering column cover. Refer to [IP-6, "G. Steering Column Cover"](#). J
7. Remove combination switch. Refer to [IP-6, "H. Combination Switch"](#). K
8. Remove cluster lid "A". Refer to [IP-7, "I. Cluster lid "A"'"](#). L
9. Remove combination meter. Refer to [IP-7, "J. Combination Meter"](#). M
10. Remove instrument panel finisher. Refer to [IP-7, "K. Instrument Finisher"](#). N
11. Remove cluster lid "C". Refer to [IP-7, "L. Cluster Lid C"](#). O
12. Remove mask. Refer to [IP-7, "M. Air Conditioner Finisher"](#). P
13. Remove glove box lid. Refer to [IP-8, "O. Glove Box Lid"](#). Q
14. Remove glove box cover assembly. Refer to [IP-8, "P. Glove Box Cover Assembly"](#). R
15. Remove side ventilator grille (LH/RH). Refer to [IP-8, "Q. Side Ventilator Grille"](#). S
16. Remove passenger air bag module. Refer to [IP-8, "S. Passenger Seat Air Bag Module"](#). T

Installation

Install in the reverse order of removal.

REMOVAL AND INSTALLATION OF CONSOLE BOX.

Removal

1. For manual transmission vehicles, remove shift knob from shift lever. U
2. Pull up parking brake V
3. Remove inside key antenna (center console) (vehicles with key system only) connector from console box. W
4. Remove console mask. X
5. Move the seat and remove the screws. Y
6. Lift up the console box and remove the front side clips. Z

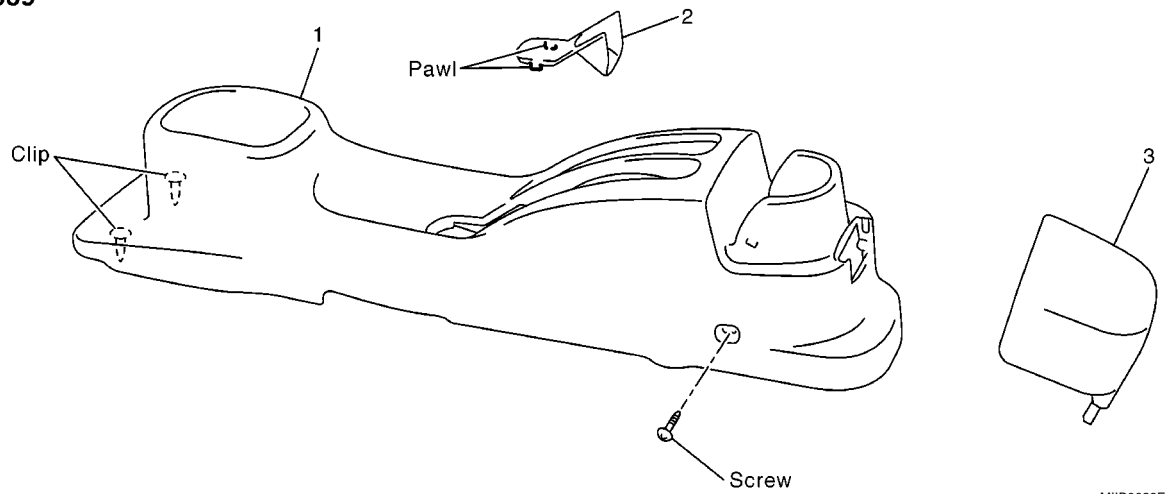
Installation

Install in the reverse order of removal.

INSTRUMENT PANEL ASSEMBLY

CONSOLE BOX

SEC. 969

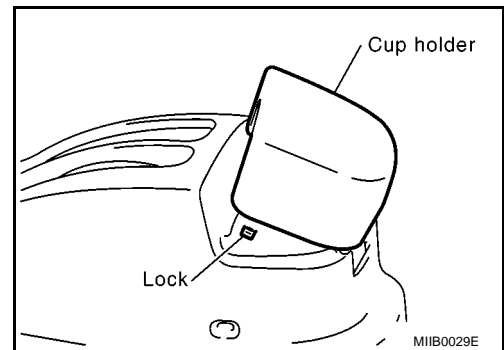


1. Console box

2. Console mask

3. Cup holder

1. Remove console mask. (hooks: 2 locations)
2. Open and secure the cup holder at the position where the lock opens, and then in this state pull it straight up to remove it.



INSTRUMENT PANEL ASSEMBLY

Disassembly and Assembly INSTRUMENT PANEL PAD

EIS0040K

A

B

C

D

E

F

G

H

IP

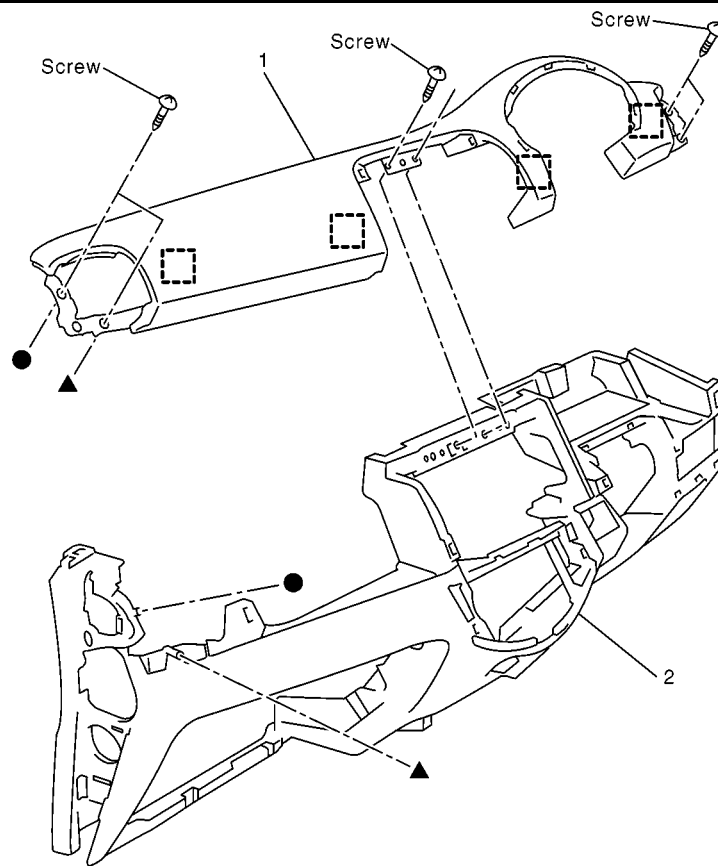
J

K

L

M

SEC. 480



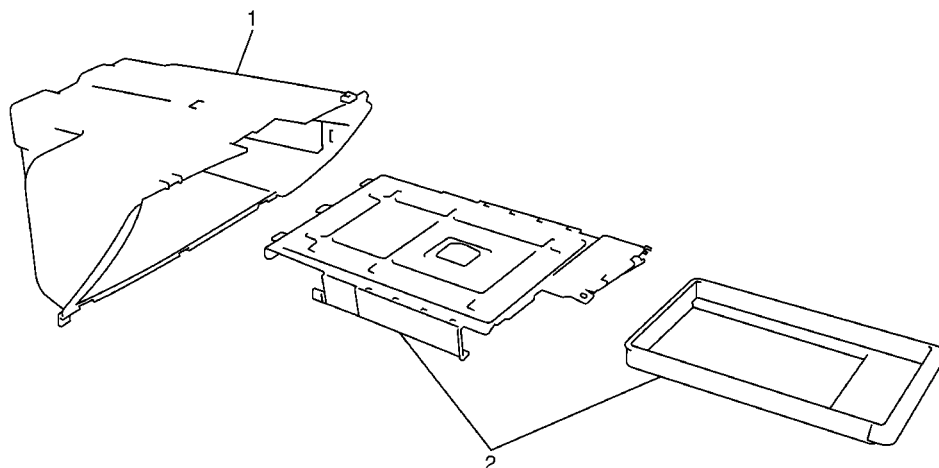
MIIB0030E

1. Instrument pad

2. Instrument panel

GLOVE BOX COVER ASSEMBLY

SEC. 680



MIIB0031E

1. Glove box cover

2. Tray bracket assembly

