

SECTION

PB

PARKING BRAKE SYSTEM

A
B
C
D
E
PB
G
H
I
J
K
L
M

CONTENTS

NOISE, VIBRATION AND HARSHNESS (NVH)	
TROUBLESHOOTING	2
NVH Troubleshooting Chart	2
PARKING BRAKE SYSTEM	3
On Board Inspection and Service	3
LEVER STROKE	3
Adjustment	3
Components	4
Removal and Installation	4
REMOVAL	4
INSTALLATION	5
SERVICE DATA AND SPECIFICATIONS (SDS)	6
Parking Brake	6

NOISE, VIBRATION AND HARSHNESS (NVH) TROUBLESHOOTING

NOISE, VIBRATION AND HARSHNESS (NVH) TROUBLESHOOTING

PFP:00003

NVH Troubleshooting Chart

EFS002FN

Use the chart below to help you find the cause of the symptom. If necessary, repair or replace these parts.

Reference page			BR-28	—	BR-27	BR-28	—	BR-28	—	—	—	NVH in RAX section	NVH in RSU section	NVH in WT section	NVH in WT section	NVH in PS section
Possible cause and SUSPECTED PARTS			Linings - damaged	Linings - uneven wear	Return spring damaged	Drum imbalance	Drum damage	Drum runout	Drum deformation	Drum deflection	Drum rust	AXLE	SUSPENSION	TYRES	ROAD WHEEL	STEERING
Symptom	BRAKE	Noise	X	X	X							X	X	X	X	X
		Shake				X						X	X	X	X	X
		Shimmy, Judder				X	X	X	X	X	X	X	X	X	X	X

X: Applicable

PARKING BRAKE SYSTEM

PARKING BRAKE SYSTEM

PFP:36010

On Board Inspection and Service LEVER STROKE

EFS002FO

- Operate parking brake lever with a force of 196 N (20 kg, 44.1 lb). Check if stroke is within specified number of notches. (Check it by hearing clicks of ratchet.)

Lever stroke :11-12 notches

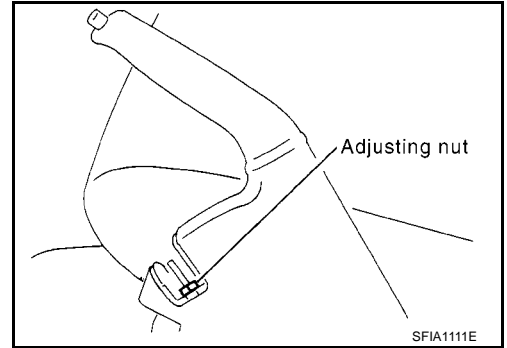
Adjustment

EFS002FP

1. Insert a socket wrench into opening of parking brake lever. Rotate adjusting nut to fully loosen cable, then return parking brake lever.
2. Depress the foot brake several times (about 2 or 3 times) and adjust the rear shoe clearance.

NOTE:

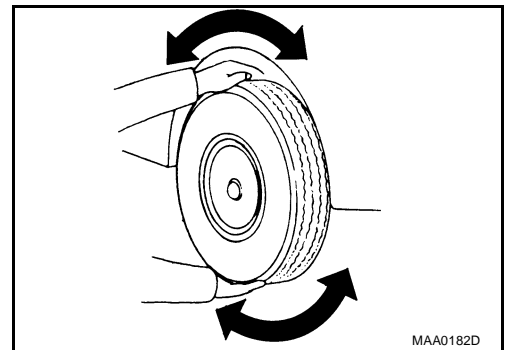
Be sure to securely depress the foot brake.



3. Rotate the road wheels to make sure that there is no drag.
4. Use the following procedure to adjust the cable.
 - a. Pull the lever up to the position where a socket wrench can be inserted.
 - b. Insert a socket wrench into the opening of the lever, and rotate the adjusting nut to adjust lever stroke.

NOTE:

Do not reuse adjusting nut after removing it.

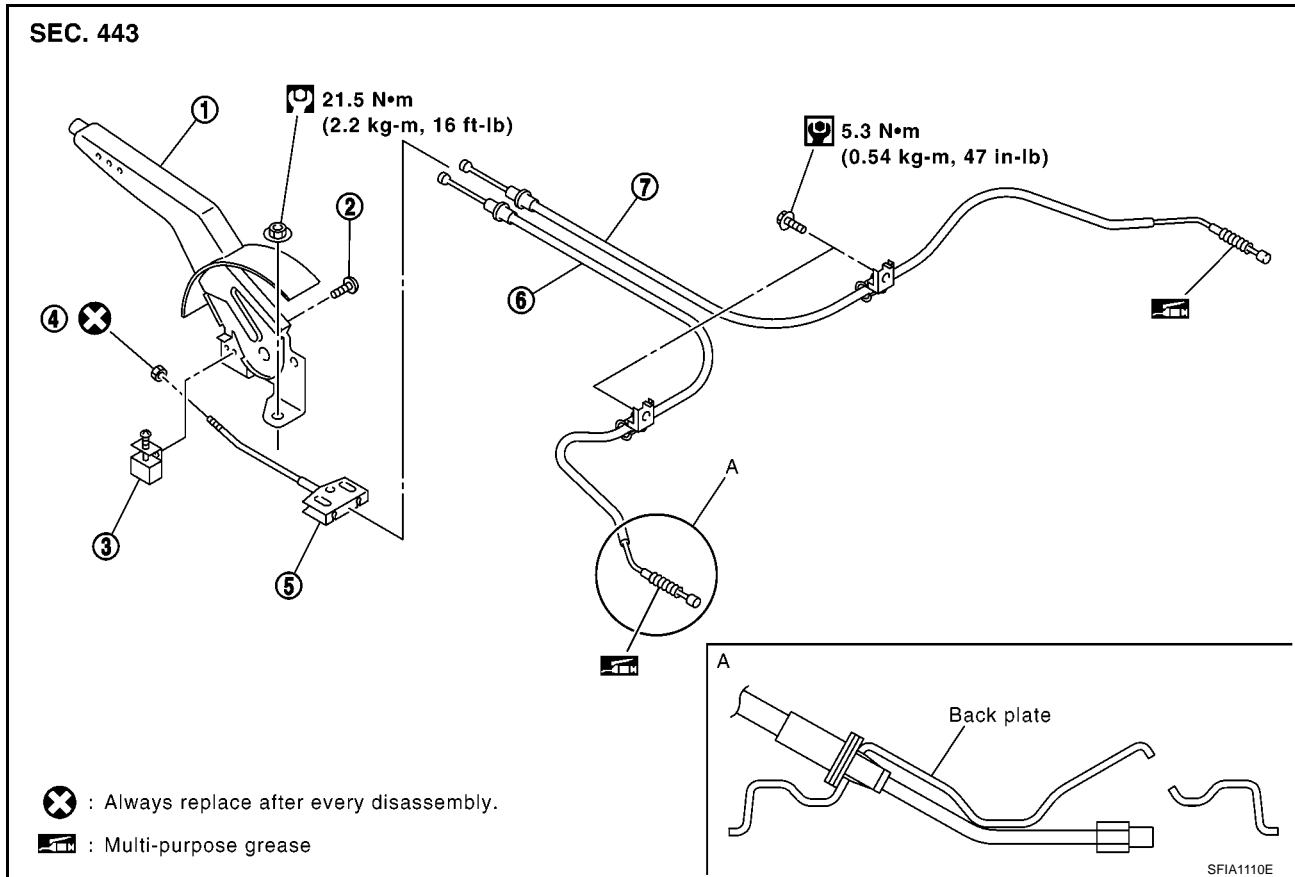


- c. After operating the lever 3 to 4 times with a force of 196 N (20 kg, 44.1 lb), make sure that the lever stroke is within the specified number of notches.
- d. With the lever completely returned, make sure that there is no drag on the rear brake.

PARKING BRAKE SYSTEM

Components

EFS002FQ



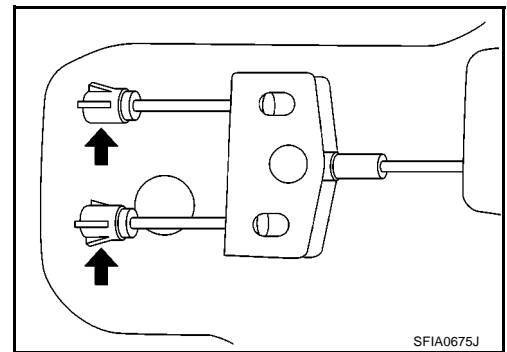
- | | | |
|---------------------|----------------|------------------------|
| 1. Device assembly | 2. Screw | 3. Warning lamp switch |
| 4. Adjusting nut | 5. Front cable | 6. Rear left cable |
| 7. Rear right cable | | |

Removal and Installation

REMOVAL

EFS002FR

1. Remove the console box. Refer to [IP-9, "REMOVAL AND INSTALLATION OF CONSOLE BOX."](#)
2. Disconnect warning lamp switch connector.
3. Loosen adjusting nut and separate the rear left and rear right cable.
4. Remove device assembly tightening nuts, and remove device assembly from vehicle.



5. Remove tire from vehicle.
6. Remove rear brake shoe and remove cable from the operating lever. Refer to [BR-27, "Components"](#).
7. Remove the exhaust center tube and heat plate. Refer to [EX-3, "EXHAUST SYSTEM"](#).
8. Disconnect the rear cable mount and remove it from the vehicle.

PARKING BRAKE SYSTEM

INSTALLATION

- 1. Install in the reverse order of removal. Tighten nuts and bolts to the specified torque.
- 2. Adjust the parking brake. Refer to [PB-3, "Adjustment"](#) .

A
B
C
D
E
PB
G
H
I
J
K
L
M

SERVICE DATA AND SPECIFICATIONS (SDS)

SERVICE DATA AND SPECIFICATIONS (SDS)

PFP:00030

Parking Brake

EFS002FS

Control type	Center lever
Lever stroke [operating force 196 N (20 kg, 44.1 lb)]	11 - 12 notches
Full stroke	15 notches
Brake warning lamp stroke	1 notch or less