

SECTION

SB

SEAT BELTS

A

B

C

CONTENTS

E

PRECAUTIONS	2	INSTALLATION	4	F
Precautions for Supplemental Restraint System (SRS) "AIR BAG" and "SEAT BELT PRE-TENSIONER"	2	Removal and Installation of Rear Seat Belt	4	
Precaution for Seat Belt Service	2	REMOVAL	4	
AFTER A COLLISION	2	INSTALLATION	5	G
SEAT BELTS	3	Inspection	5	
System Description	3	POST-ACCIDENT INSPECTION	5	
SEAT BELT WARNING LAMP	3	INSPECTION FOR SEAT BELT RETRACTOR.....	5	
SEAT BELT WARNING CHIME	3	INSPECTION OF ELR AND SEAT BELT WITH CHILD SAFETY SEAT ANCHOR SYSTEM	6	SB
Removal and Installation of Front Seat Belt	3	ISO FIX CHILD RESTRAINT ANCHORAGE	7	
REMOVAL	3	Removal and Installation	7	I

J

K

L

M

PRECAUTIONS

PRECAUTIONS

PFP:00001

Precautions for Supplemental Restraint System (SRS) “AIR BAG” and “SEAT BELT PRE-TENSIONER”

BHS0002L

The Supplemental Restraint System such as “AIR BAG” and “SEAT BELT PRE-TENSIONER”, used along with a front seat belt, helps to reduce the risk or severity of injury to the driver and front passenger for certain types of collision. Information necessary to service the system safely is included in the SRS and SB section of this Service Manual.

WARNING:

- To avoid rendering the SRS inoperative, which could increase the risk of personal injury or death in the event of a collision which would result in air bag inflation, all maintenance must be performed by an authorized NISSAN/INFINITI dealer.
- Improper maintenance, including incorrect removal and installation of the SRS, can lead to personal injury caused by unintentional activation of the system. For removal of Spiral Cable and Air Bag Module, see the SRS section.
- Do not use electrical test equipment on any circuit related to the SRS unless instructed to in this Service Manual. SRS wiring harnesses can be identified by yellow and/or orange harnesses or harness connectors.

Precaution for Seat Belt Service

BHS0002M

CAUTION:

- Before removing the seat belt pre-tensioner assembly, turn the ignition switch off, disconnect the battery ground cable and wait at least 3 minutes.
- Do not use electrical test equipment for seat belt pre-tensioner connector.
- After replacing or reinstalling seat belt pre-tensioner assembly, or reconnecting seat belt pre-tensioner connector, check the system function. Refer to [SRS-18, "SRS Operation Check"](#).
- Do not use disassemble buckle or seat belt assembly.
- Replace anchor bolts if they are deformed or worn out.
- Never oil tongue and buckle.
- If any component of seat belt assembly is questionable, do not repair. Replace the whole seat belt assembly.
- If webbing is cut, frayed, or damaged, replace seat belt assembly.
- When replacing seat belt assembly, use a genuine seat belt assembly.

AFTER A COLLISION

WARNING:

Inspect all seat belt assemblies including retractors and attaching hardware after any collision. NISSAN recommends that all seat belt assemblies in use during a collision be replaced unless the collision was minor and the belts show no damage and continue to operate properly. Failure to do so could result in serious personal injury in an accident. Seat belt assemblies not in use during a collision should also be replaced if either damage or improper operation is noted. Seat belt pre-tensioner should be replaced even if the seat belts are not in use during a frontal collision in which the air bags are deployed.

Replace any seat belt assembly (including anchor bolts) if:

- The seat belt was in use at the time of a collision (except for minor collisions and the belts, retractors and buckles show no damage and continue to operate properly).
- The seat belt was damaged in an accident. (i.e. torn webbing, bent retractor or guide, etc.)
- The seat belt attaching point was damaged in an accident. Inspect the seat belt attaching area for damage or distortion and repair as necessary before installing a new seat belt assembly.
- Anchor bolts are deformed or worn out.
- The seat belt pre-tensioner should be replaced even if the seat belts are not in use during the collision in which the air bags are deployed.

SEAT BELTS

SEAT BELTS

PFP:86884

System Description

SEAT BELT WARNING LAMP

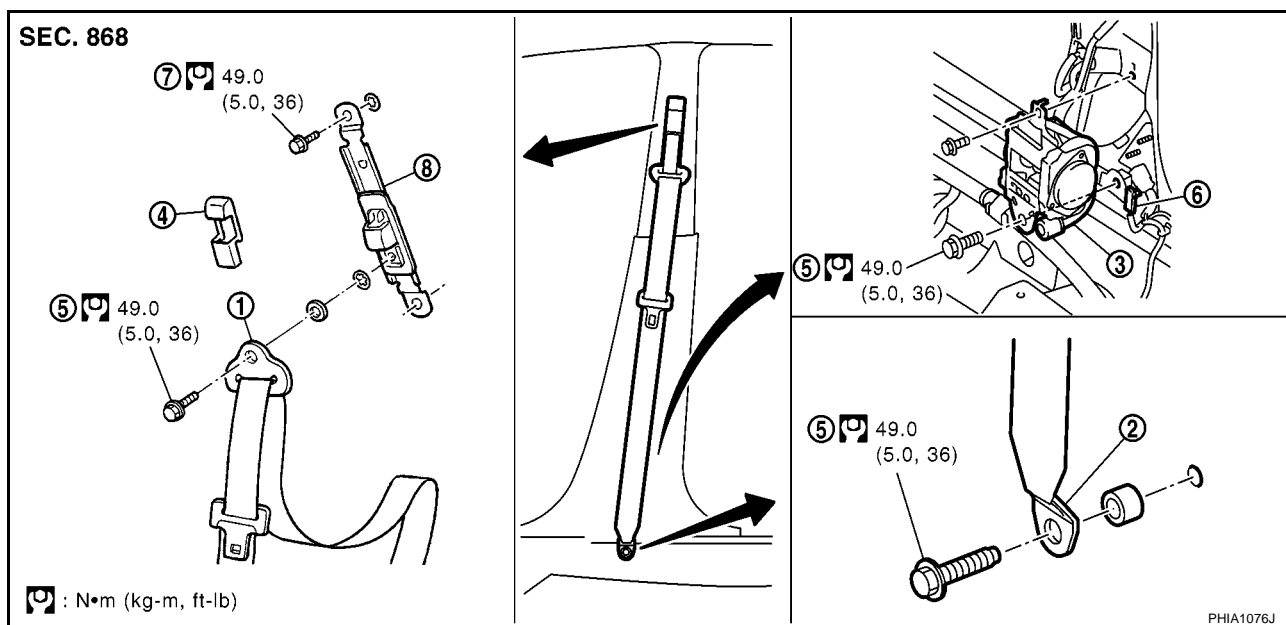
- Fasten driver's seat belt.
- The seat belt warning lamp should go out.
- If the seat belt warning lamp does not go out. Refer to [DI-32. "WARNING LAMPS"](#) .

SEAT BELT WARNING CHIME

- Fasten driver's seat belt.
- The seat belt warning chime should not sound.
- If the seat belt warning chime sounds. Refer to [DI-52. "WARNING CHIME"](#) .

Removal and Installation of Front Seat Belt

BHS0002N



- | | | |
|-----------------------------------|-----------------------------------|--------------------------------------|
| 1. Seat belt anchor plate (upper) | 2. Seat belt anchor plate (lower) | 3. Seat belt pre-tensioner |
| 4. Seat belt adjuster cover | 5. Anchor bolt | 6. Seat belt pre-tensioner connector |
| 7. Bolt | 8. Seat belt adjuster | |

CAUTION:

Before servicing SRS, turn ignition switch off, disconnect the battery ground cable and wait at least 3 minutes.

REMOVAL

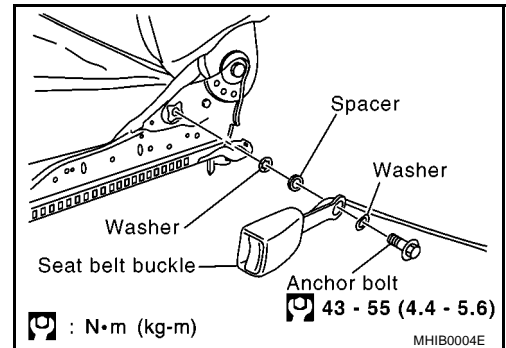
Seat Belt Retractor

1. Remove bolt cover.
2. Remove shoulder anchor bolts.
3. Remove the center pillar lower garnish. Refer to [EI-26. "Removal and Installation"](#) in EI section.
4. Remove seat belt pre-tensioner connector on the seat belt retractor.
5. Remove anchor plate (lower) pre-tensioner connector (driver side only).
6. Remove pre-tensioner seat belt retractor mounting screw and floor anchor bolt. Then, remove seat belt assembly.

SEAT BELTS

Seat Belt Buckle

1. Remove front seat from vehicle body. Refer to [SE-7, "FRONT SEAT"](#) in SE section.
2. Separate clip of buckle switch harness connector from the bottom of seat cushion.
3. Remove seat cushion inner finisher. Refer to [SE-10, "Disassembly and Assembly of Seat Cushion"](#) in SE section.
4. Remove anchor bolt (1) and buckle.

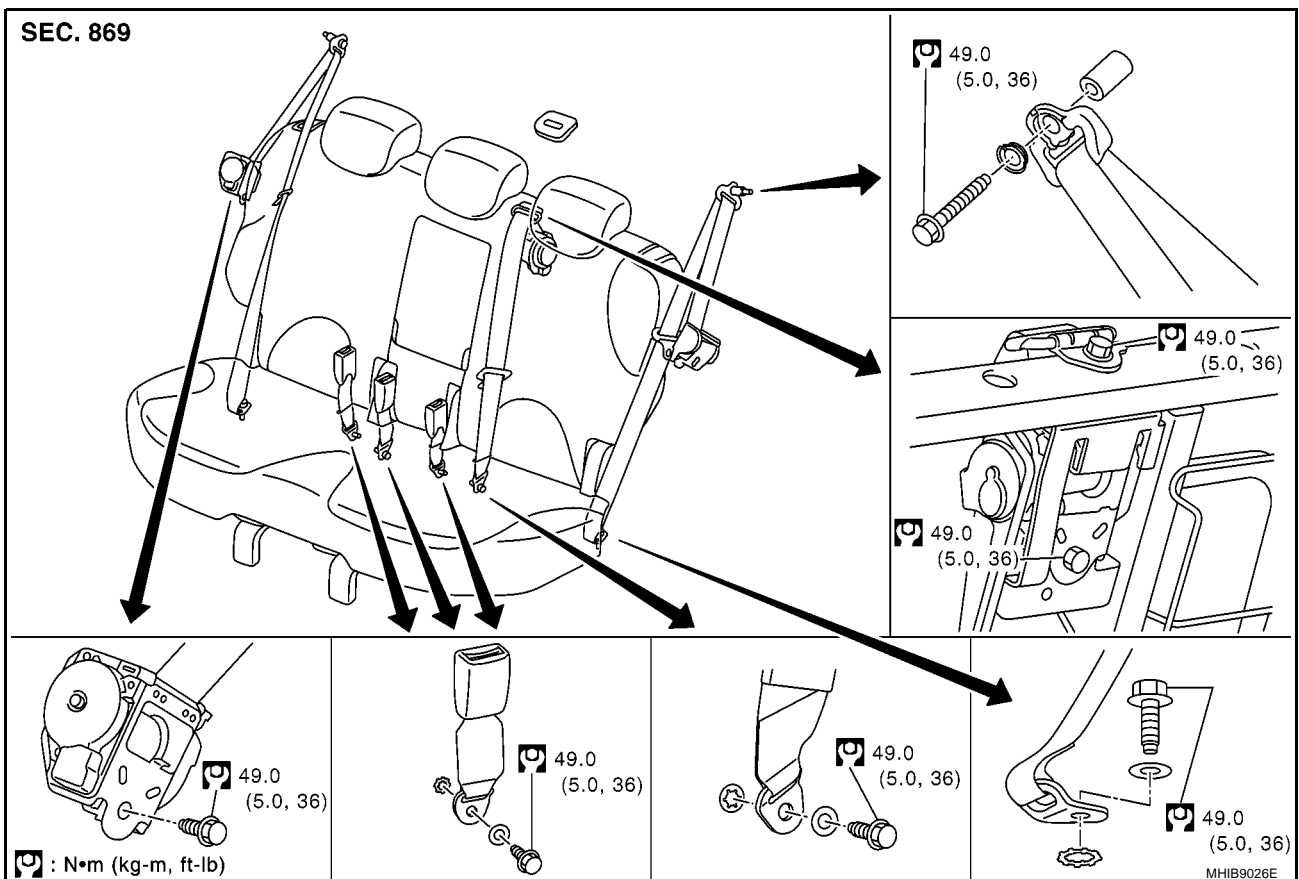


INSTALLATION

- Install in the reverse order of removal.
- Tighten anchor bolts to the specified torque.

Removal and Installation of Rear Seat Belt

BHS0002P



REMOVAL

Seat Belt Retractor (side seats)

1. Remove luggage side finisher. Refer to [EI-33, "Luggage Side Finisher"](#).
2. Remove shoulder anchor bolt cap.
3. Remove shoulder and floor anchor bolt.
4. Remove the retractor.

SEAT BELTS

Seat Belt Retractor (centre seat)

1. Remove seat cushion trim and pad. Refer to [SE-13, "Rear Seat Disassembly and Assembly"](#) .
2. Remove seatback trim and pad. Refer to [SE-13, "Rear Seat Disassembly and Assembly"](#) .
3. Remove shoulder anchor bolts (2) and floor anchor bolt.
4. Remove the retractor.

Seat Belt Buckle

1. Remove seat cushion trim and pad. Refer to [SE-13, "Rear Seat Disassembly and Assembly"](#) .
2. Remove seat buckle anchor bolt.
3. Remove seat buckle.

INSTALLATION

- Install in the reverse order of removal.
- Tighten anchor bolts to the specified torque.

Inspection

BHS0002R

POST-ACCIDENT INSPECTION

After a collision, inspect for damage or distortion of retractor, seat belt anchor, floor anchor, or shoulder anchor. Nissan recommends replacement of all seat belt assemblies in the following cases because these impairments may lead to personal injury.

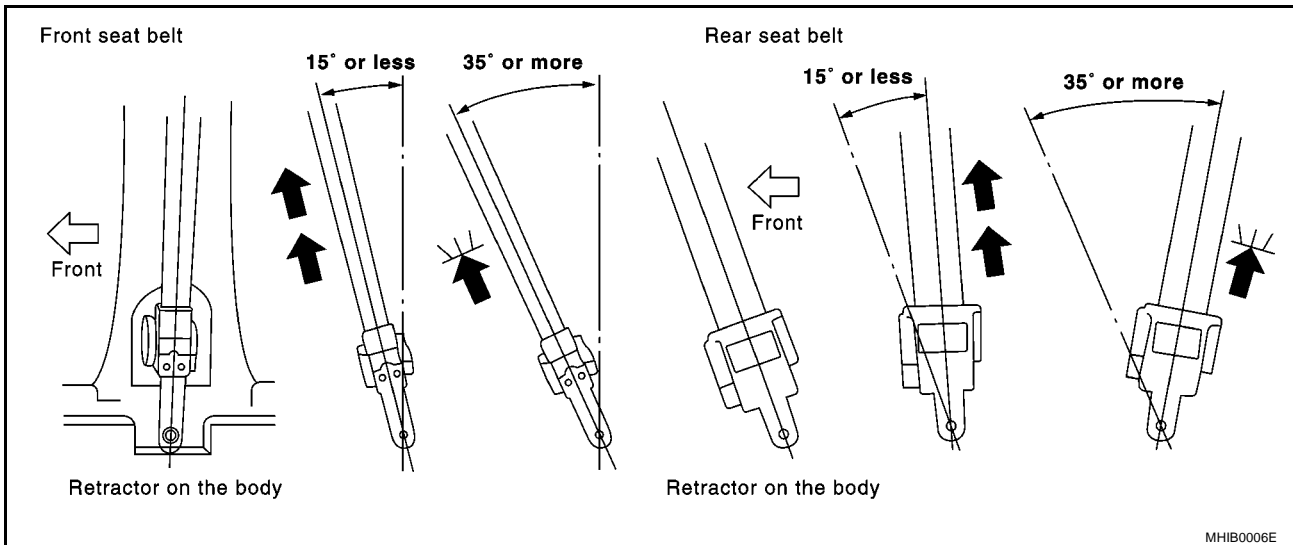
- After a collision
- When installation point of seat belt assembly on vehicle is damaged.
- When it does not operate normally.

INSPECTION FOR SEAT BELT RETRACTOR

1. Using seat belt warning lamp, make sure it works normally.
Check the seat belt warning lamp/chime for proper operation as follows:
Switch ignition ON. The seat belt warning lamp should illuminate. Also, the seat belt warning chime should sound for about six seconds.
Fasten driver's seat belt. The seat belt warning lamp should go out and the chime (if sounding) should stop. If warning lamp stay illuminated or warning chime combine to sound. Refer to [DI-52, "WARNING CHIME"](#) . Refer to [DI-32, "WARNING LAMPS"](#) .
 2. Check whether anchor bolts on seat belt retractor and buckle are securely tightened.
 3. Confirm if the seat belt through anchor axis freely rotates, seat belt adjuster properly operates, or completely engages.
 4. Retractor operation inspection
 - a. Pull out all webbing and check for twisting, cut, or other damage.
 - b. Retract webbing. Check if the webbing is retracted smoothly and completely into the retractor. When webbing is not retracted smoothly due to the dust or other reasons, carry out the following procedure with "SEAT BELT, TAPE SET".
Inspection for Front Seat Belt Shoulder Anchor.
 1. Pull webbing out 50 cm or more.
 2. Fix webbing near the belt exit with a clip.
 3. Pass the thin wire into the through part of shoulder anchor and webbing. Remove the sticking materials from the webbing by sliding the wire vertically along the surface of the webbing through part while pulling both sides of wire tightly.
 4. Clean the remaining dirt by cleaning the webbing through part with a clean cloth.
 5. Apply tape to the shoulder anchor belt through part where webbing touches.
NOTE:
Be careful to apply tape with no wrinkling or looseness.
 6. Remove the seat belt fixing, and confirm webbing smoothly retracts.
 - c. Insert the seat belt into the buckle and confirm seat belt is firmly secured.
 - d. Remove the seat belt from buckle. Release the seat belt and confirm webbing and tongue are placed correctly.
5. Seat belt retractor unit inspection

SEAT BELTS

- a. Remove seat belt retractor.
- b. As shown in the figure, without twisting retractor, recline the seat belt retractor at the position retractor is mounted on the vehicle body. Slowly pull out the webbing.
 - Webbing is able to pull out when reclining 15 degrees or less.
 - Webbing is not able to pull out when reclining 35 degrees or more.



If it does not operate normally, replace seat belt assembly.

INSPECTION OF ELR AND SEAT BELT WITH CHILD SAFETY SEAT ANCHOR SYSTEM

ELR and Seat Belt With Child Safety Seat Anchor System

- ELR is a system which locks retractor in emergency cases such as sudden braking so that the webbing is not pulled out any further.
- Child safety seat anchor system is applied at the 3-point seat belt (outside seat) of back seat. Child safety seat anchor system functions when webbing is completely pulled out. Webbing is locked at certain point when retracting webbing little by little.
- There are 2 inspections: static and dynamic. Use the following procedures to check retractor for normal operation.

ELR Static Inspection

Does retractor lock and webbing stop immediately when quickly pulling webbing forward?

Inspection for Child Safety Seat Anchor System

1. Fully pull out webbing until “clicking” is heard.
2. Is “clicking” operating sound heard when retracting webbing little by little?
3. Is webbing locked and no longer pulled out when under tension?
4. Is child safety seat anchor system released when webbing is completely retracted?

ELR Dynamic Inspection

WARNING:

- The following tests should be carried out in a safe, open place free of traffic and obstacles.
 - The tests should be carried out on a dry paved road. Never attempt the tests on wet or unpaved road, open road, or highway. (This may cause an accident or personal injury.)
 - Driver and passenger assume retractor will not lock and prepare themselves accordingly.
1. Tighten driver and passenger seat belts.
 2. Drive at approximately 16 km/h (MPH).
 3. Notify passenger of a sudden stop. Driver and passenger prepare themselves for the possibility of retractor not locking. Then, driver fully depresses the brake pedal to stop suddenly.
 4. While car stops, confirm if retractor is locked and webbing is not pulled out any more. Check for only retractor part if it is not locked.

ISO FIX CHILD RESTRAINT ANCHORAGE

ISO FIX CHILD RESTRAINT ANCHORAGE

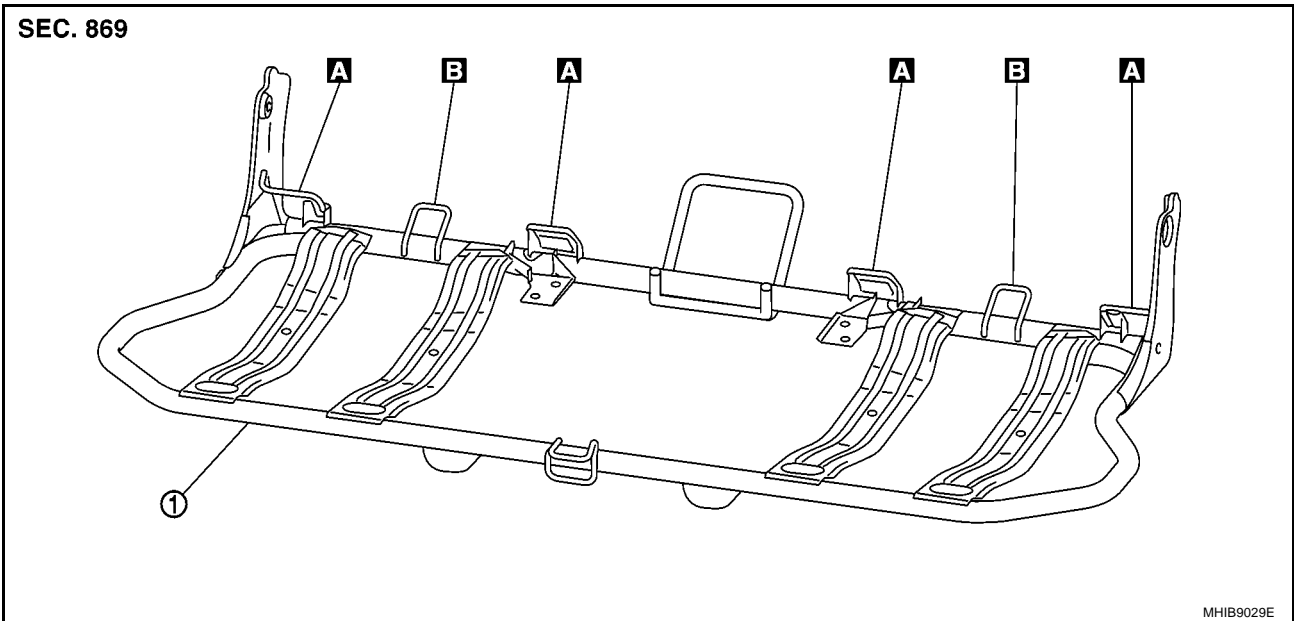
PFP:88840

Removal and Installation

BHS0004R

A
B
C
D
E
F
G
I
J
K
L
M

SEC. 869



1. Rear seat cushion frame assembly

A : ISO fix child restraint anchor

B : Tether strap anchor

SB

CAUTION:

ISO fix child restraint anchor and Tether strap anchor are not serviceable. If damaged, replace the rear seat cushion frame assembly.

ISO FIX CHILD RESTRAINT ANCHORAGE
