

SECTION **IP**

INSTRUMENT PANEL

CONTENTS

PRECAUTIONS	2	MENT PAD	10	F
Precautions for Supplemental Restraint System (SRS) "AIR BAG" and "SEAT BELT PRE-TENSIONER"	2	Disassembly and Assembly	11	
Precautions	2	GLOVE BOX ASSEMBLY	12	G
CLIP AND FASTENER	3	Removal And Installation	12	
List of Table	3	REMOVAL	12	
INSTRUMENT PANEL ASSEMBLY	4	INSTALLATION	12	
Component Parts Location	4	Disassembly And Assembly	12	H
Removal and Installation	5	DISASSEMBLY	12	
WORK ITEM TABLE	5	ASSEMBLY	12	
REMOVAL	6	CENTER CONSOLE ASSEMBLY	13	IP
REMOVAL AND INSTALLATION OF INSTRUMENT PAD		Removal And Installation	13	
		REMOVAL	13	
		INSTALLATION	13	
		Disassembly And Assembly	13	J

PRECAUTIONS

PRECAUTIONS

PFP:00001

Precautions for Supplemental Restraint System (SRS) “AIR BAG” and “SEAT BELT PRE-TENSIONER”

BIS000TY

The Supplemental Restraint System such as “AIR BAG” and “SEAT BELT PRE-TENSIONER”, used along with a front seat belt, helps to reduce the risk or severity of injury to the driver and front passenger for certain types of collision. Information necessary to service the system safely is included in the SRS and SB section of this Service Manual.

WARNING:

- To avoid rendering the SRS inoperative, which could increase the risk of personal injury or death in the event of a collision which would result in air bag inflation, all maintenance must be performed by an authorized NISSAN/INFINITI dealer.
- Improper maintenance, including incorrect removal and installation of the SRS, can lead to personal injury caused by unintentional activation of the system. For removal of Spiral Cable and Air Bag Module, see the SRS section.
- Do not use electrical test equipment on any circuit related to the SRS unless instructed to in this Service Manual. SRS wiring harnesses can be identified by yellow and/or orange harnesses or harness connectors.

Precautions

BIS000TZ

- Disconnect both battery cables in advance.
- Disconnect air bag system line in advance.
- Never tamper with or force air bag lid open, as this may adversely affect air bag performance.
- Be careful not to scratch pad and other parts.
- When removing or disassembling any part, be careful not to damage or deform it. Protect parts, which may get in the way with cloth.
- When removing parts with a screwdriver or other tool, protect parts by wrapping them with vinyl or tape.
- Keep removed parts protected with cloth.
- If a clip is deformed or damaged, replace it.
- If an unreusable part is removed, replace it with a new one.
- Tighten bolts and nuts firmly to the specified torque.
- After re-assembly has been completed, make sure each part functions correctly.
- Remove stains in the following way.

Water-soluble stains:

Dip a soft cloth in warm water, and then squeeze it tightly. After wiping the stain, wipe with a soft dry cloth.

Oil stain:

Dissolve a synthetic detergent in warm water (density of 2 to 3% or less), dip the cloth, then clean off the stain with the cloth. Next, dip the cloth in fresh water and squeeze it tightly. Then clean off the detergent completely. Then wipe the area with a soft dry cloth.

- Do not use any organic solvent, such as thinner or benzene.

CLIP AND FASTENER

PFP:76906

List of Table

BIS000U0

A

B

C

D

E

F

G

H


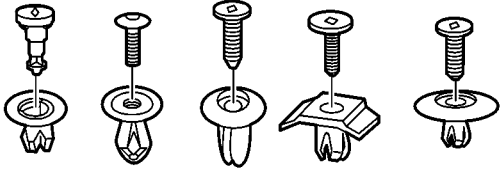

IP

J

K

L

M

Symbol No.	Shape	Removal and installation
CS101 		Removal: 1. Screw out with a Phillips screwdriver. 2. Remove female portion with flat-bladed screwdriver. 

MIB0017E

INSTRUMENT PANEL ASSEMBLY

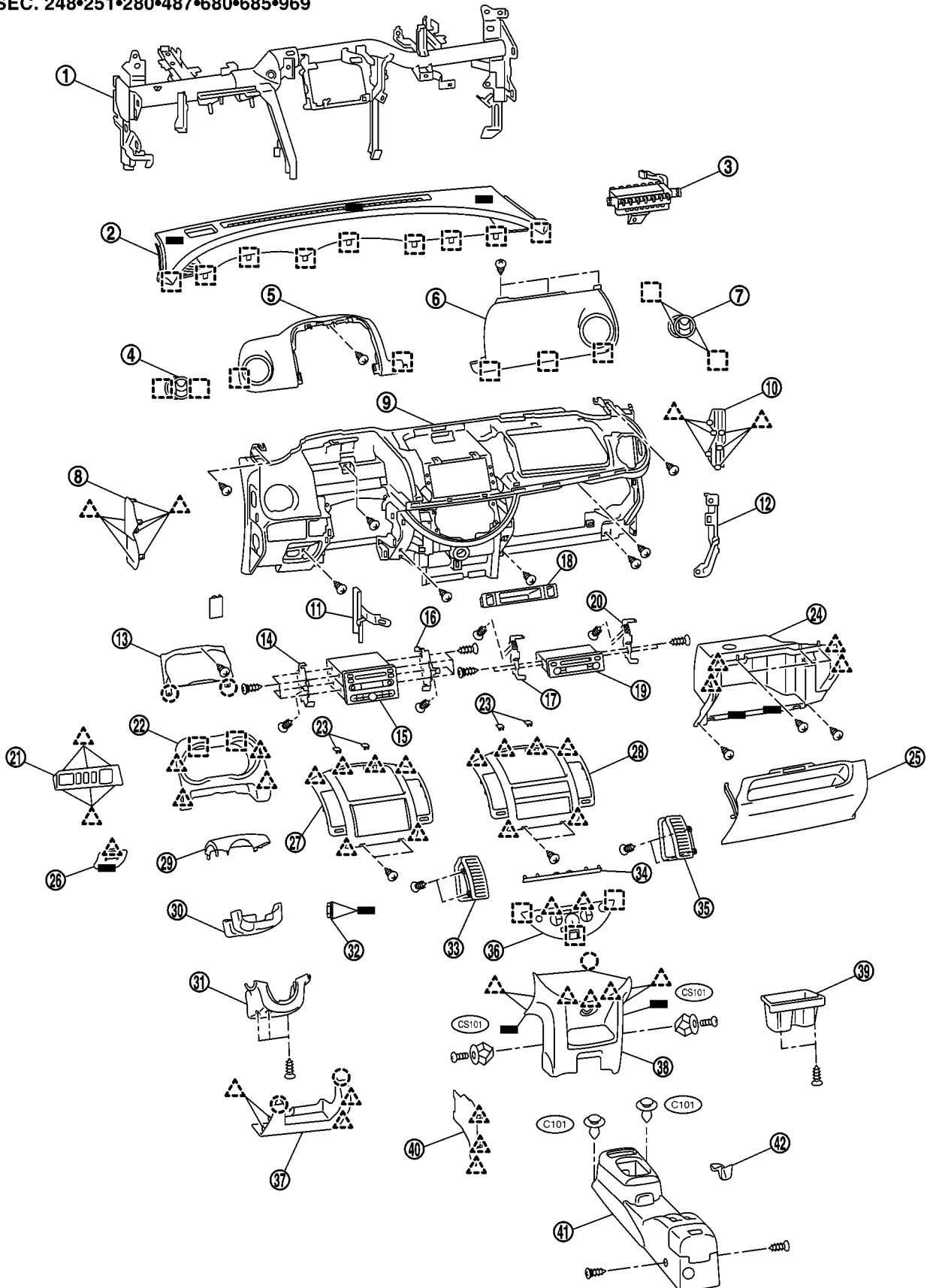
INSTRUMENT PANEL ASSEMBLY

PFP:68200

Component Parts Location

BIS000U1

SEC. 248•251•280•487•680•685•969





MIB9296E

INSTRUMENT PANEL ASSEMBLY

- | | | |
|---|--------------------------------------|------------------------------------|
| 1. Steering member | 2. Upper instrument panel | 3. Passenger air bag module* |
| 4. Side ventilator grille (LH) | 5. Instrument pad (driver side) | 6. Instrument pad (passenger side) |
| 7. Side ventilator grille (RH) | 8. Instrument side mask (LH) | 9. Instrument panel |
| 10. Instrument side mask (RH) | 11. Instrument panel stay (LHD only) | 12. Instrument member bracket (RH) |
| 13. Combination meter | 14. Audio unit bracket (LH) | 15. Audio unit (CD changer) |
| 16. Audio unit bracket (RH) | 17. Audio unit bracket (LH) | 18. Deck pocket |
| 19. Audio unit (CD) | 20. Audio unit bracket (RH) | 21. Switch panel finisher |
| 22. Cluster lid A | 23. Cluster lid C upper mask | 24. Glove box cover assembly |
| 25. Glove box lid | 26. Fuse block lid | 27. Cluster lid C (CD changer) |
| 28. Cluster lid C (CD) | 29. Steering column cover upper | 30. Steering column protector |
| 31. Steering column cover lower | 32. Steering lock escutcheon | 33. Central ventilator grille (LH) |
| 34. Cluster lid C lower mask | 35. Central ventilator grille (RH) | 36. Air conditioner finisher |
| 37. Instrument finisher lower | 38. Instrument panel stay cover | 39. Cup holder |
| 40. Instrument panel stay finisher (LHD only) | 41. Center console | 42. Console mask |

*: Refer to SRS section.

 : Insertion

 : Pawl

 : Plastic clip

 : Metal clip

Removal and Installation WORK ITEM TABLE

BIS000U2

Component Parts Location		Instrument panel	Instrument pad (passenger side)	Instrument pad (driver side)	Upper instrument panel	Combination meter	Audio unit
A. Front pillar garnish	IP-6	[1]	[1]		[1]		
B. Upper instrument panel	IP-6	[2]	[2]		[2]		
C. Steering lock escutcheon	IP-6	[3]	[3]				
D. Instrument finisher lower	IP-6	[4]	[4]				
E. Switch panel finisher	IP-6	[5]	[5]				
F. Steering column cover upper	IP-7	[6]	[6]	[1]		[1]	
G. Steering column cover lower	IP-7	[7]	[7]	[2]		[2]	
H. Combination switch	IP-7	[8]	[8]				
I. Cluster lid A	IP-7	[9]	[9]	[3]		[3]	
J. Combination meter	IP-7	[10]	[10]	[4]		[4]	
K. Cluster lid C	IP-8	[11]	[11]	[5]			[1]
L. Air conditioner finisher	IP-9	[12]	[12]	[6]			
M. Instrument pad (driver side)	IP-9	[13]	[13]	[7]			
N. Center consol	IP-9	[14]	[14]				
O. Instrument panel stay cover	IP-9	[15]	[15]				
P. Glove box lid	IP-9						
Q. Glove box cover assembly	IP-10	[16]	[16]				
R. Instrument side mask	IP-10	[17]	[17]				
S. Steering wheel	IP-10	[18]	[18]				
T. Instrument panel	IP-10	[19]	[19]				
U. Instrument pad (passenger side)	IP-10		[20]				

INSTRUMENT PANEL ASSEMBLY

[]: The number shows the removal order.

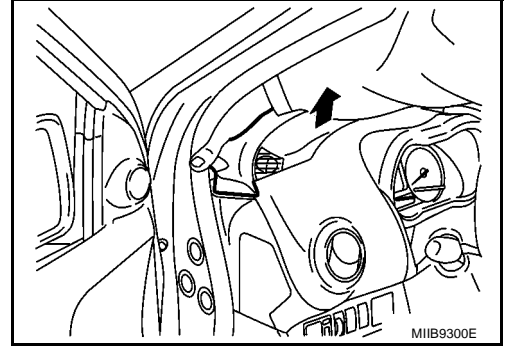
REMOVAL

A. Front Pillar Garnish

Refer to [EI-26, "BODY SIDE TRIM"](#) in EI section.

B. Upper Instrument Panel

1. Disconnect sunload sensor harness connector and remove the sunload sensor (if equipped). Refer to [ATC-116, "Removal and Installation"](#).
2. Lift up the upper instrument panel on one side to disengage metal clips.
3. Remove the upper instrument panel.



C. Steering Lock Escutcheon

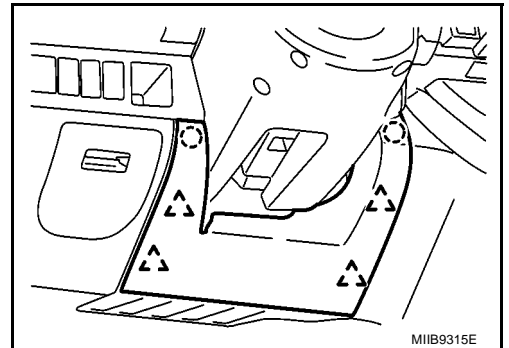
Pull to release steering lock escutcheon from the steering column cover.

CAUTION:

To install, align key cylinder end bottom protrusion with escutcheon inside notch and install.

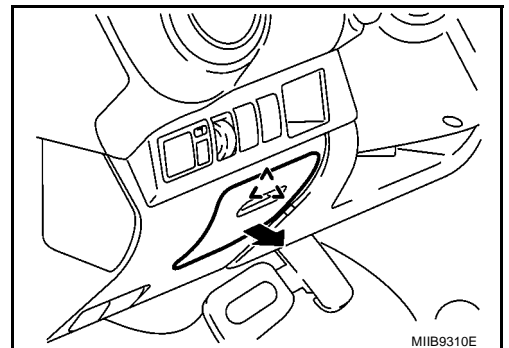
D. Instrument Finisher Lower

Disengage upper plastic clips, and pull carefully rearward to remove avoiding interference with surrounding surfaces.



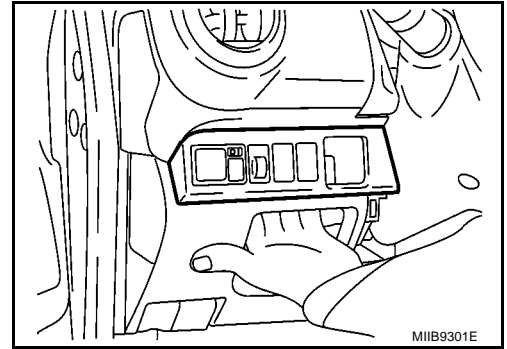
E. Switch Panel Finisher

1. Remove fuse block lid.



INSTRUMENT PANEL ASSEMBLY

2. Push the switch panel finisher to rear direction as shown.
3. Disconnect harness connectors and remove the switch panel finisher.



A
B
C
D
E
F
G
H

F. Steering Column Cover Upper

1. Tilt down the steering column, and remove screw (1) facing front of vehicle.
2. Disengage hooks and remove.

CAUTION:

Pull out being careful of interference with surrounding objects.

G. Steering Column Cover Lower

Remove screws (3), and pull downward to remove.

CAUTION:

Pull out being careful of interference with surrounding objects.

H. Combination Switch

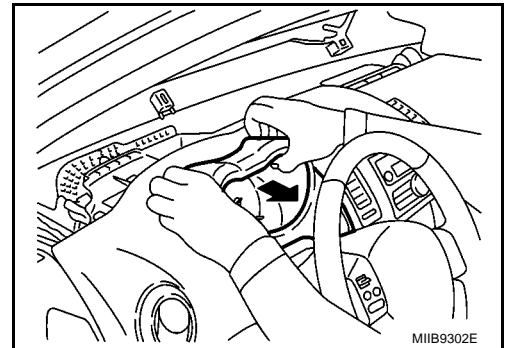
Refer to [LT-112, "Removal and Installation"](#).

I. Cluster Lid A

Pull the cluster lid A to rearward direction and remove.

CAUTION:

Pull out being careful of interference with surrounding objects.

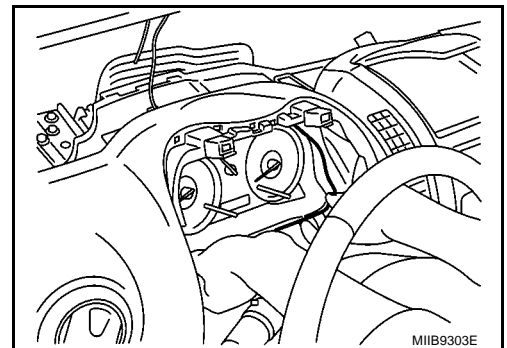


IP

J
K
L

J. Combination Meter

1. Remove screw (1).
2. Pull rearward to disengage plastic clips as shown.
3. Disconnect harness connectors.
4. Lift up the lower side of combination meter to rotate the combination meter from the vertical to horizontal position.
5. Remove the combination meter from the instrument pad.

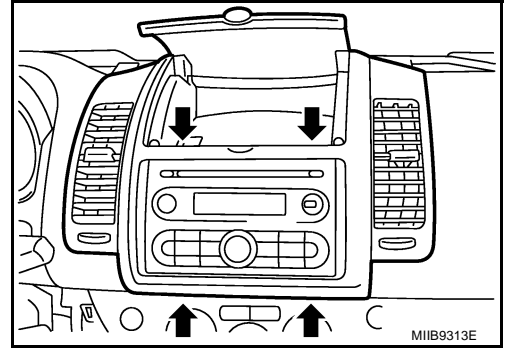


M

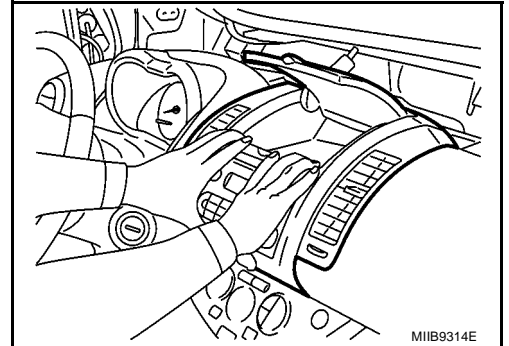
INSTRUMENT PANEL ASSEMBLY

K. Cluster Lid C

1. Remove cluster lid C upper mask and remove upper fixing screws.
2. Remove cluster lid C lower mask and remove lower fixing screws.

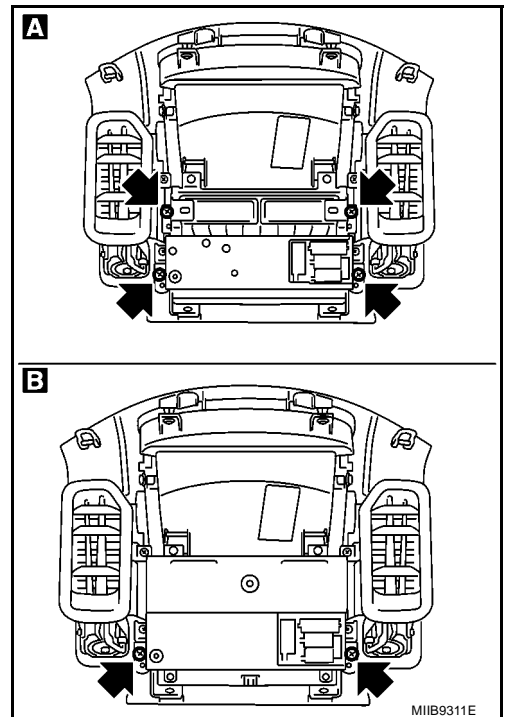


3. Pull rearward to release the cluster lid from instrument panel and pad.
4. Disconnect antenna connector and audio harness connector.



After removal:

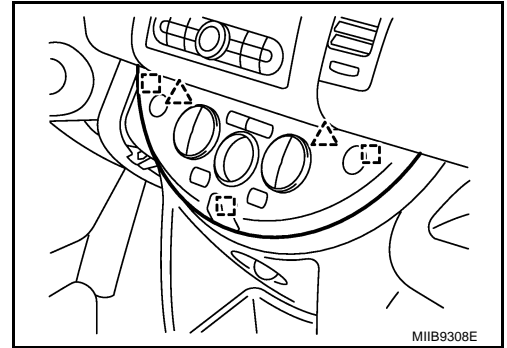
- Separate the central ventilator grille LH and RH. Refer to [ATC-130, "Removal and Installation"](#) and [MTC-76, "Removal and Installation"](#).
- For (A) audio unit models, remove screws (4) securing audio unit bracket LH and RH to release deck pocket and audio unit.
- For (B) audio unit models, remove screws (2) securing audio unit bracket LH and RH to release audio unit.



INSTRUMENT PANEL ASSEMBLY

L. Air Conditioner Finisher

Refer to [ATC-112, "Removal and Installation of Controller"](#) and [MTC-62, "Removal and Installation"](#) .



M. Instrument Pad (Driver Side)

Pull rearward to disengage metal clips from the instrument panel.

CAUTION:

Pull out being careful of interference with surrounding objects.

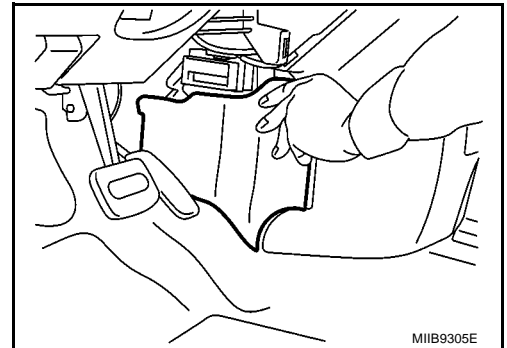
After removal and if necessary, remove the side ventilator grille. Refer to [ATC-130, "Removal and Installation"](#) and [MTC-76, "Removal and Installation"](#) .

N. Center Console

Refer to [IP-13, "Removal And Installation"](#) .

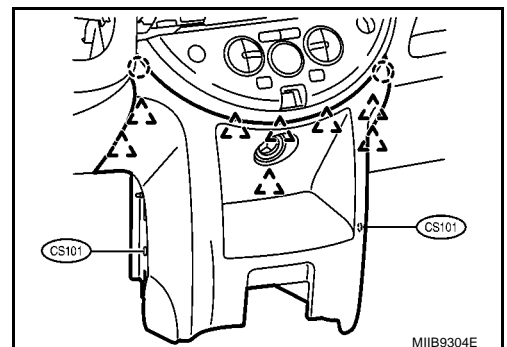
O. Instrument Panel Stay Cover

1. Remove instrument panel stay finisher.



2. Remove mounting clips LH and RH.
3. Pull instrument stay cover to rearward to disengage plastic clips.
4. Disconnect power supply or cigar lighter harness connector if equipped.
5. Remove instrument stay cover.

After removal, if necessary, remove screws securing the cup holder to the instrument stay cover, and remove cup holder.



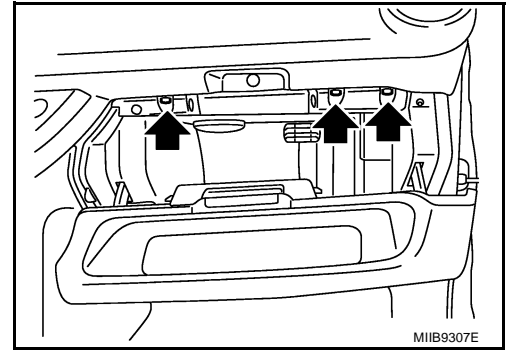
P. Glove Box Lid.

Refer to [IP-12, "GLOVE BOX ASSEMBLY"](#) .

INSTRUMENT PANEL ASSEMBLY

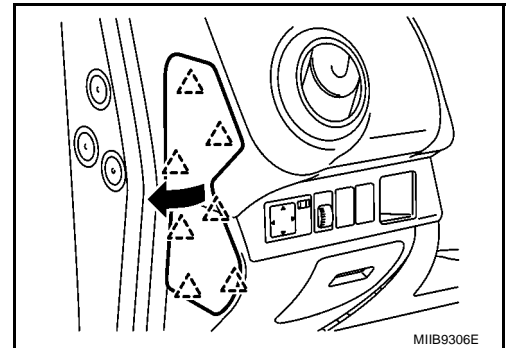
Q. Glove Box Cover Assembly

1. Remove screws shown in the figure and remove the glove box assembly.
2. After removal, separate parts if necessary. Refer to [IP-12, "GLOVE BOX ASSEMBLY"](#).



R. Instrument Side Mask

1. From inner side of instrument panel, push to disengage pawls as shown.
2. Disconnect airbag cut-off switch from harness (passenger side only).
3. Disengage airbag cut-off switch from instrument side mask (passenger side only).
4. Pull out inserted area of instrument side mask and remove from vehicle.



S. Steering Wheel

Refer to [SRS-36, "DRIVER AIR BAG MODULE"](#) and [SRS-38, "SPIRAL CABLE"](#).

T. Instrument Panel

1. Remove the fuel filler lid opener. Refer to [BL-212, "Removal and Installation of Fuel Filler Lid Opener"](#).
2. Tilt down steering column.
3. Remove screws, refer to [IP-11, "Disassembly and Assembly"](#), and remove instrument panel and pad from passenger door opening.

NOTE:

This operation requires two workers.

4. After removal, separate parts. Refer to [IP-11, "Disassembly and Assembly"](#).

U. Instrument Pad (Passenger Side)

Remove mountings screws (3) securing the instrument pad to the instrument panel, and release metal clips and remove the instrument pad (passenger side) from the Instrument panel. Refer to [IP-11, "Disassembly and Assembly"](#).

After removal and if necessary, remove the side ventilator grille. Refer to [ATC-130, "Removal and Installation"](#) and [MTC-76, "Removal and Installation"](#).

REMOVAL AND INSTALLATION OF INSTRUMENT PAD

Driver Side:

1. Remove the steering column upper cover. Refer to [IP-7, "F. Steering Column Cover Upper"](#).
2. Remove the steering column lower cover. Refer to [IP-7, "G. Steering Column Cover Lower"](#).
3. Remove the cluster lid A. Refer to [IP-7, "I. Cluster Lid A"](#).
4. Remove the combination meter. Refer to [IP-7, "J. Combination Meter"](#).
5. Remove the cluster lid C. Refer to [IP-8, "K. Cluster Lid C"](#).
6. Remove the air conditioner finisher. Refer to [IP-9, "L. Air Conditioner Finisher"](#).
7. Remove the instrument pad (driver side). Refer to [IP-9, "M. Instrument Pad \(Driver Side\)"](#).

Passenger Side:

1. Remove the instrument panel assembly. Refer to [IP-6, "REMOVAL"](#).

INSTRUMENT PANEL ASSEMBLY

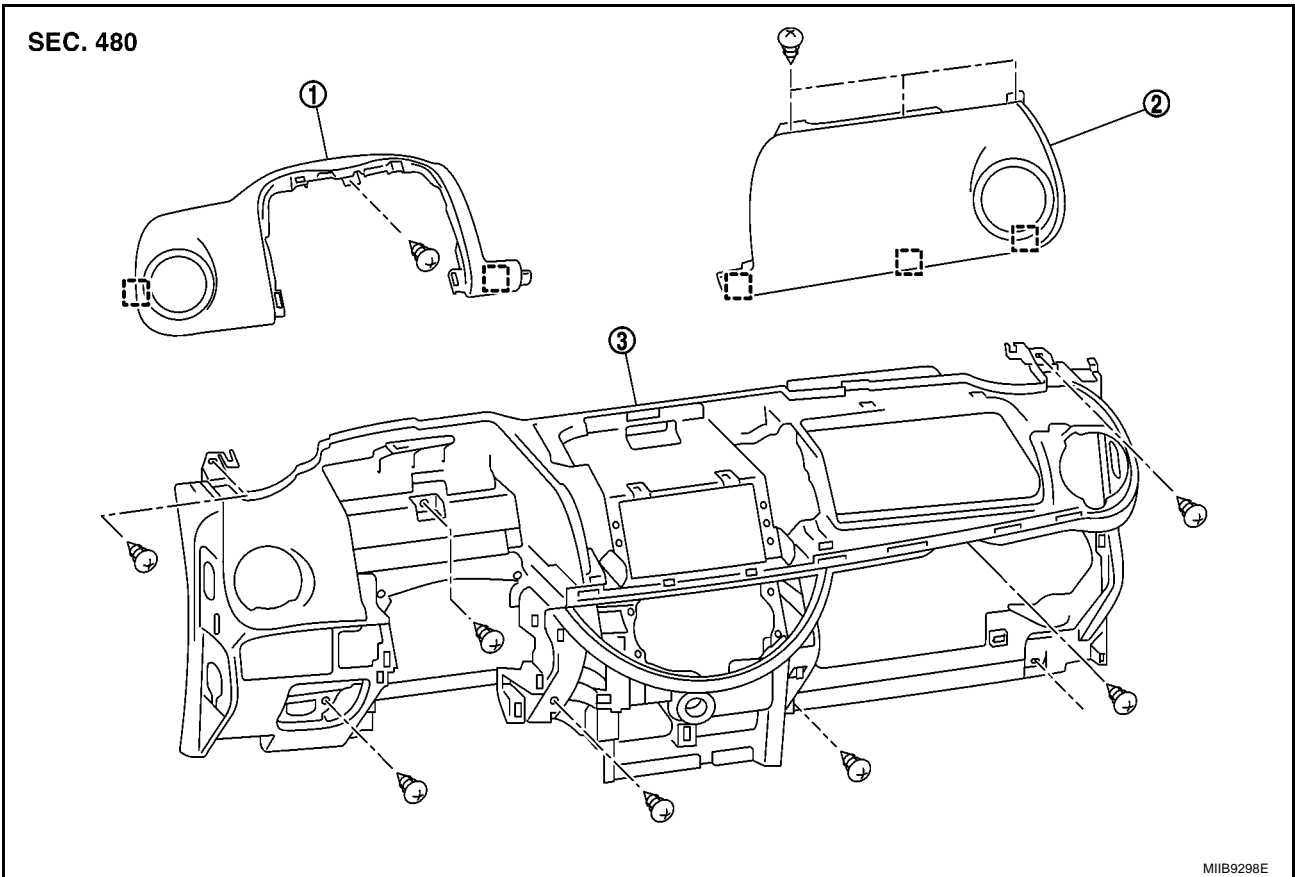
2. Remove the instrument pad (passenger side). Refer to [IP-10, "U. Instrument Pad \(Passenger Side\)"](#).

Installation

Install in the reverse order of removal.

Disassembly and Assembly

BIS000U3



1. Instrument pad (driver side)

2. Instrument pad (passenger side)

3. Instrument panel

[] : Metal clip

GLOVE BOX ASSEMBLY

GLOVE BOX ASSEMBLY

PFP:68510

Removal And Installation REMOVAL

BIS0014W

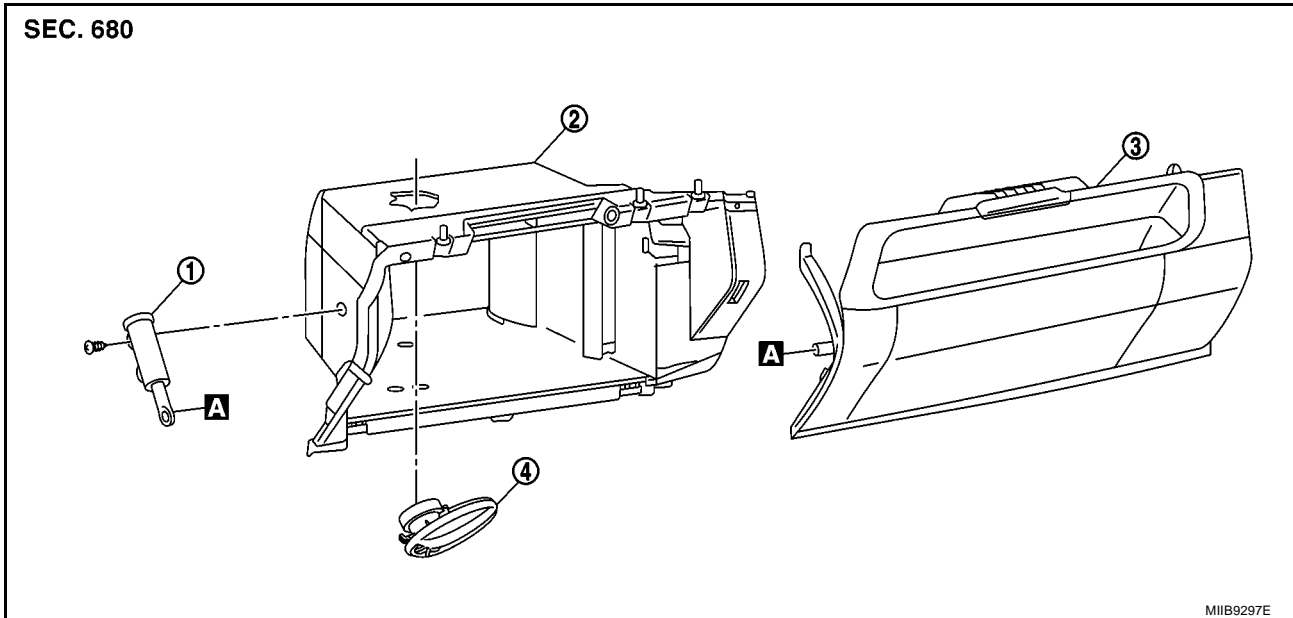
1. Remove the glove box assembly. Refer to [IP-10, "Q. Glove Box Cover Assembly"](#).

INSTALLATION

Install in the reverse order of removal.

Disassembly And Assembly

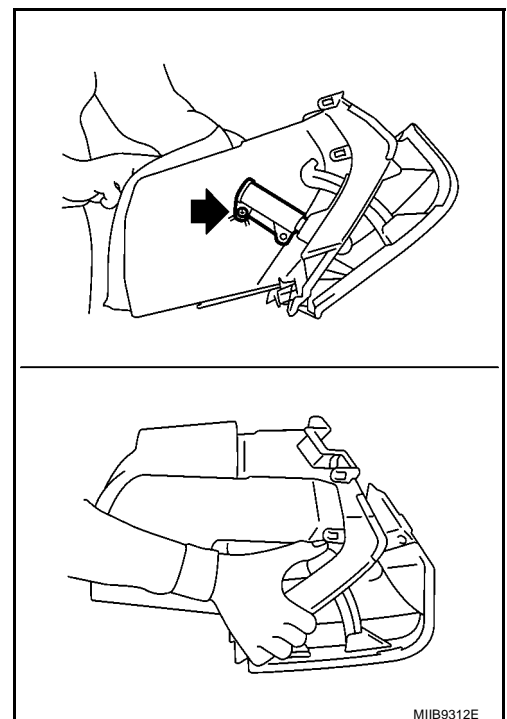
BIS0014X



1. Spring assembly
2. Glove box cover
3. Glove box lid
4. Air conditioner inlet

DISASSEMBLY

1. Remove spring assembly screw.
2. Push glove box lid hooks to disengage glove box lid from the glove box cover.
3. Remove the air conditioner inlet from the glove box cover.



ASSEMBLY

Assembly is in the reverse order of disassembly.

CENTER CONSOLE ASSEMBLY

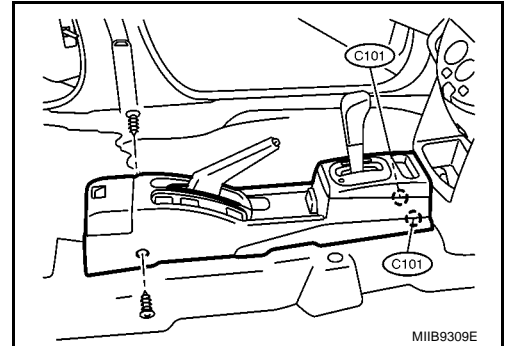
CENTER CONSOLE ASSEMBLY

PFP:96910

Removal And Installation REMOVAL

BIS0014U

1. Remove shift knob from the shift lever (for manual transmission vehicles only). Refer to [MT-12, "Removal and Installation of Control Device and Cable"](#) (JH3), [MT-42, "Removal and Installation of Control Device and Cable"](#) (JR5).
2. Engage the shift knob in neutral position (for automatic transmission only).
3. Remove console mask. Refer to [IP-13, "Disassembly And Assembly"](#).
4. Pull up parking brake lever, and remove finisher from the lever.
5. Remove the armrest (if equipped) from the driver seat (for manual transmission vehicles only). Refer to [SE-7, "Component Parts Location"](#).
6. Remove power socket or cigar lighter from the center console and disconnect harness connector.
7. Slide front seat to access to the center console rear fixing screws.
8. Lift up the front side of the center console to disengage fixing clips.
9. Disconnect all harness connectors.
10. Remove the center console.

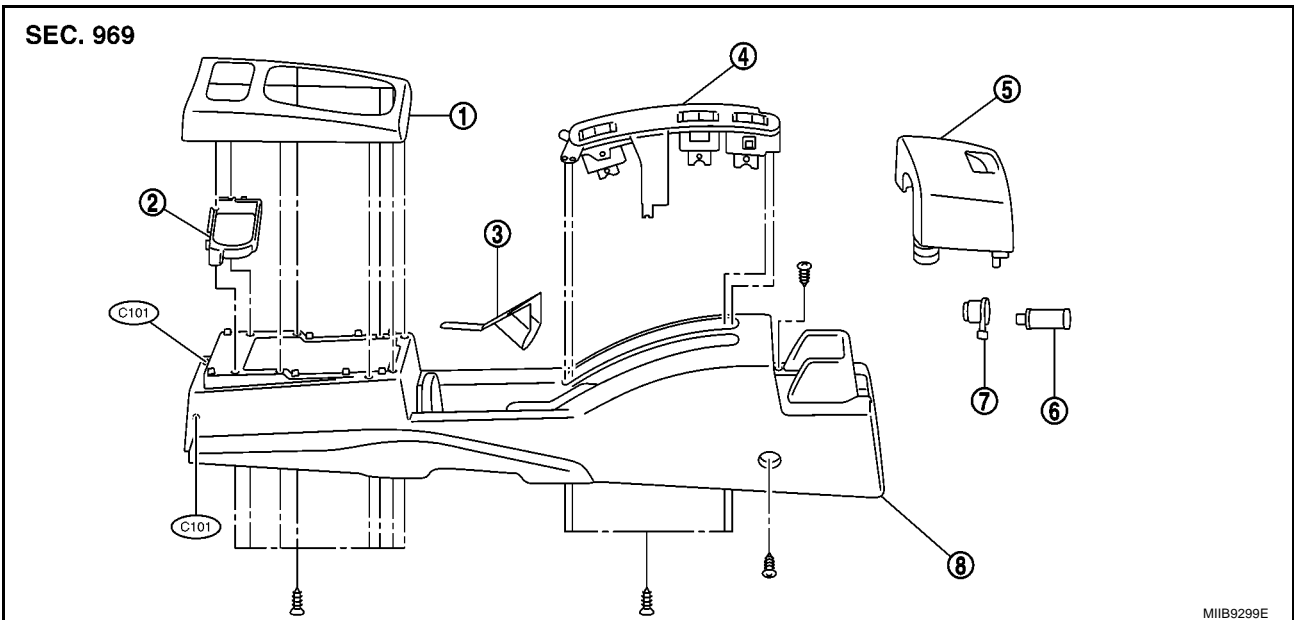


INSTALLATION

Install in the reverse order of removal.

Disassembly And Assembly

BIS0014V



- | | | |
|---------------------------|---------------------|-----------------|
| 1. Control lever finisher | 2. Coin compartment | 3. Console mask |
| 4. Switch holder | 5. Cup holder | 6. Power socket |
| 7. Power socket finisher | 8. Center console | |

CENTER CONSOLE ASSEMBLY
