

A
B
C
D
E
F
G
SB
I
J
K
L
M
N
O
P

E

SB

PRECAUTIONS

< PRECAUTION >

PRECAUTION

PRECAUTIONS

Precaution for Supplemental Restraint System (SRS) "AIR BAG" and "SEAT BELT PRE-TENSIONER"

INFOID:0000000014392292

The Supplemental Restraint System such as "AIR BAG" and "SEAT BELT PRE-TENSIONER", used along with a front seat belt, helps to reduce the risk or severity of injury to the driver and front passenger for certain types of collision. Information necessary to service the system safely is included in the SR and SB section of this Service Manual.

WARNING:

- To avoid rendering the SRS inoperative, which could increase the risk of personal injury or death in the event of a collision which would result in air bag inflation, it is recommended that all maintenance and repair be performed by an authorized NISSAN/INFINITI dealer.
- Improper repair, including incorrect removal and installation of the SRS, can lead to personal injury caused by unintentional activation of the system. For removal of Spiral Cable and Air Bag Module, see the SR section.
- Do not use electrical test equipment on any circuit related to the SRS unless instructed to in this Service Manual. SRS wiring harnesses can be identified by yellow and/or orange harnesses or harness connectors.

PRECAUTIONS WHEN USING POWER TOOLS (AIR OR ELECTRIC) AND HAMMERS

WARNING:

- When working near the Air Bag Diagnosis Sensor Unit or other Air Bag System sensors with the Ignition ON or engine running, DO NOT use air or electric power tools or strike near the sensor(s) with a hammer. Heavy vibration could activate the sensor(s) and deploy the air bag(s), possibly causing serious injury.
- When using air or electric power tools or hammers, always switch the Ignition OFF, disconnect the battery or batteries, and wait at least three minutes before performing any service.

Precaution for Seat Belt Service

INFOID:0000000014392293

CAUTION:

- Before removing the seat belt pre-tensioner assembly, turn the ignition switch OFF, disconnect the battery or batteries and wait at least three minutes. For approximately three minutes after the battery terminals have been removed, it is still possible for the air bag and seat belt pre-tensioner to deploy. Therefore, do not attempt work on any SRS connectors or wires until at least three minutes have passed.
- After replacing or reinstalling seat belt pre-tensioner assembly or reconnecting seat belt pre-tensioner assembly connector, make sure entire SRS operates properly. Refer to [SRC-15. "SRS Operation Check"](#).
- Do not disassemble buckle or seat belt assembly.
- Replace anchor bolts if they are deformed or worn out.
- Do not oil tongue or buckle.
- If any component of seat belt assembly is questionable, do not repair. Replace the whole seat belt assembly.
- If webbing is cut, frayed or damaged, replace seat belt assembly.
- When replacing seat belt assembly, use a genuine NISSAN seat belt assembly.

Precaution for Work

INFOID:0000000014392294

- When removing or disassembling each component, be careful not to damage or deform it. If a component may be subject to interference, be sure to protect it with a shop cloth.
- When removing (disengaging) components with a screwdriver or similar tool, be sure to wrap the component with a shop cloth or vinyl tape to protect it.
- Protect the removed parts with a shop cloth and prevent them from being dropped.
- Replace a deformed or damaged clip.
- If a part is specified as a non-reusable part, always replace it with a new one.
- Be sure to tighten bolts and nuts securely to the specified torque.
- After installation is complete, be sure to check that each part works properly.

PRECAUTIONS

< PRECAUTION >

- Follow the steps below to clean components:
- Water soluble dirt:
 - Dip a soft cloth into lukewarm water, wring the water out of the cloth and wipe the dirty area.
 - Then rub with a soft, dry cloth.
- Oily dirt:
 - Dip a soft cloth into lukewarm water with mild detergent (concentration: within 2 to 3%) and wipe the dirty area.
 - Then dip a cloth into fresh water, wring the water out of the cloth and wipe the detergent off.
 - Then rub with a soft, dry cloth.
- Do not use organic solvent such as thinner, benzene, alcohol or gasoline.
- For genuine leather seats, use a genuine leather seat cleaner.

A

B

C

D

E

F

G

SB

I

J

K

L

M

N

O

P

PREPARATION

< PREPARATION >

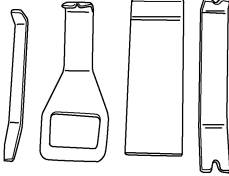
PREPARATION

PREPARATION

Special Service Tool

INFOID:0000000014392295

The actual shape of the tools may differ from those illustrated here.

Tool number (TechMate No.) Tool name	Description
<p>— (J-46534) Trim Tool Set</p>  <p>AWJIA04832Z</p>	Removing trim components

BASIC INSPECTION

COMPONENT INSPECTION

Inspection

INFOID:0000000014392296

AFTER A COLLISION

WARNING:

Inspect all seat belt assemblies including retractors and attaching hardware after any collision. NISSAN/INFINITI recommends that all seat belt assemblies in use during a collision be replaced unless the collision was minor and the belts show no damage and continue to operate properly. Failure to do so could result in serious personal injury in an accident. Seat belt assemblies not in use during a collision should also be replaced if either damage or improper operation is noted. Seat belt pre-tensioners should be replaced even if the seat belts are not in use during a frontal collision in which the air bags are deployed.

Replace any seat belt assembly (including anchor bolts) if:

- The seat belt was in use at the time of a collision (except for minor collisions and the belts, retractors and buckles show no damage and continue to operate properly).
- The seat belt was damaged in an accident (i.e. torn webbing, bent retractor or guide, etc.).
- The seat belt attaching point is damaged in an accident. Inspect the seat belt attaching area for damage or distortion and repair if necessary before installing a new seat belt assembly.
- Anchor bolts are deformed or worn out.
- The seat belt pre-tensioner should be replaced even if the seat belts are not in use during the collision in which the air bags are deployed.

PRELIMINARY CHECKS

1. Check the seat belt warning lamp for proper operation per the following:
 - a. Turn ignition switch ON. The seat belt warning lamp should illuminate.
 - b. Fasten driver seat belt. The seat belt warning lamp should turn OFF.
 2. If the air bag warning lamp is blinking, perform self-diagnosis with CONSULT and air bag warning lamp. Refer to [SRC-16, "Trouble Diagnosis with CONSULT"](#).
 3. Check that the seat belt retractor, seat belt anchor and buckle bolts are tightened firmly.
 4. Check the shoulder seat belt guide and shoulder belt height adjuster for front seats. Check that guide swivels freely and that webbing lays flat and does not bind in guide. Check that height adjuster operates properly and holds securely.
 5. Check retractor operation:
 - a. Fully extend the seat belt webbing and check for twists, tears or other damage.
 - b. Allow the seat belt to retract. Check that webbing returns smoothly and completely into the retractor. If the seat belt does not return smoothly, wipe the inside of the loops with a clean paper cloth. Dirt build-up in the loops of the upper anchors can cause the seat belts to retract slowly.
 - c. Fasten the seat belt. Check that seat belt returns smoothly and completely to the retractor. If the webbing does not return smoothly, the cause may be an accumulation of dust or dirt. Use the "SEAT BELT TAPE SET" and perform the following steps.
 - d. Inspect the front seat belt D-ring anchor
 1. Pull the seat belt out to a length of 500 mm (19.69 in) or more.
 2. Hold the seat belt at the center pillar webbing opening with a clip or other device.
 3. Pass a thin wire through the D-ring anchor webbing opening. Hold both ends of the wire and pull it tightly while moving it up and down several times along the webbing opening surface to remove dirt stuck there.
 4. Any dirt that cannot be removed with the wire can be removed by cleaning the opening with a clean cloth.
 5. Apply tape at the point where the webbing contacts the D-ring anchor webbing opening.
- NOTE:**
Apply the tape so that there is no slack or wrinkling.
6. Remove the clip holding the seat belt and check that the webbing returns smoothly.
 6. Repeat steps above if necessary to check the other seat belts.

COMPONENT INSPECTION

< BASIC INSPECTION >

SEAT BELT RETRACTOR ON-VEHICLE CHECK

Emergency Locking Retractors (ELR) and Automatic Locking Retractors (ALR)

NOTE:

All seat belt retractors are Emergency Locking Retractors (ELR) type. In an emergency (sudden stop) the retractor will lock and prevent the webbing from extending any further. All 3-point type seat belt retractors except the driver seat belt also have an Automatic Locking Retractors (ALR) mode. The ALR mode (also called child restraint mode) is used when installing child seats. The ALR mode is activated when the seat belt is fully extended. When the webbing is then retracted partially, the ALR mode automatically locks the seat belt in a specific position so the webbing cannot be extended any further. To cancel the ALR mode, allow the seat belt to fully wind back into the retractor.

Check the seat belt retractors with the following test(s) to determine if a retractor assembly is operating properly.

ELR Function Stationary Check

Grasp the shoulder webbing and pull forward quickly. The retractor should lock and prevent the belt from extending further.

ALR Function Stationary Check

1. Pull out the entire length of seat belt from retractor until a click is heard.
2. Retract the webbing partially. A clicking noise should be heard as the webbing retracts, indicating that the retractor is in the Automatic Locking Retractors (ALR) mode.
3. Grasp the seat belt and try to pull out the retractor. The webbing must lock and not extend any further. If it does not operate normally, replace the retractor assembly.
4. Allow the entire length of the webbing to retract to cancel the automatic locking mode.

ELR Function Moving Check

WARNING:

Perform the following test in a safe, open area clear of other vehicles and obstructions (for example, a large, empty parking lot). Road surface must be paved and dry. Never perform the following test on wet or gravel roads or on public streets and highways. This could result in an accident and serious personal injury. The driver and passenger must be prepared to brace themselves in the event that the retractor does not lock.

1. Fasten driver seat belt. Buckle a passenger into the seat for the belt that is to be tested.
2. Proceed to the designated safe area.
3. Drive the vehicle at approximately 16 km/h (10 mph). Notify any passengers of a pending sudden stop and the driver and passenger must be prepared to brace themselves in the event that the retractor does not lock. Apply brakes firmly and make a very hard stop.

During stopping, seat belts should lock and not be extended. If the seat belt retractor assembly does not lock, perform the retractor off-vehicle check.

FRONT SEAT BELT (LH/RH) RETRACTOR OFF-VEHICLE CHECK

1. Remove the front seat belt retractor. Refer to [SB-8, "Exploded View"](#).
2. Slowly pull out webbing while tilting the seat belt retractor forward from the mounted position without twisting the seat belt retractor as shown.

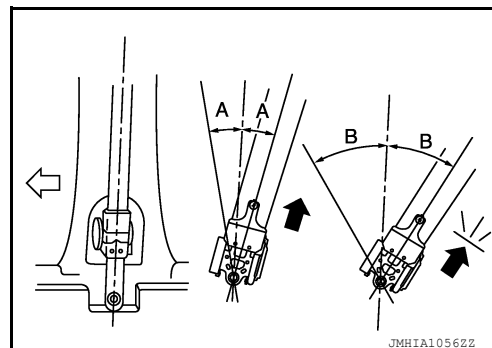
A : The webbing can be pulled out if the retractor is tilted 15° degrees or less.

B : The webbing can not be pulled out if the retractor is tilted 45° degrees or more.

NOTE:

A and B show tilting angles.

⇐ : Front



3. Replace the seat belt retractor if it does not operate within specifications.

FRONT SEAT BELT (CENTER) RETRACTOR OFF-VEHICLE CHECK

COMPONENT INSPECTION

< BASIC INSPECTION >

1. Remove the front seat belt retractor. Refer to [SB-8. "Exploded View"](#).
2. Slowly pull out webbing while tilting the seat belt retractor forward from the mounted position without twisting the seat belt retractor as shown.

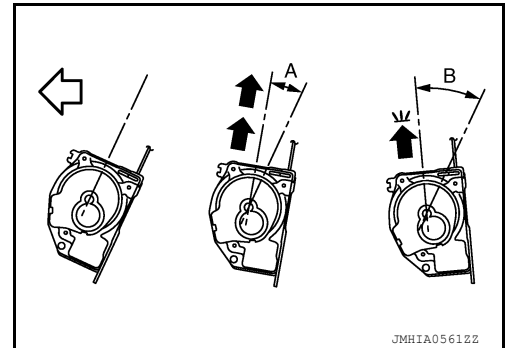
A : The webbing can be pulled out if the retractor is tilted 15° degree or less.

B : The webbing can not be pulled out if the retractor is tilted 45° degrees or more.

NOTE:

A and B show tilting angles.

⇐ : Front



3. Replace the seat belt retractor if it does not operate within specifications.

REAR SEAT BELT OUTER RETRACTOR OFF-VEHICLE CHECK

1. Remove the rear seat belt retractor. Refer to [SB-14. "Exploded View"](#).
2. Slowly pull out webbing while tilting the seat belt retractor forward from the mounted position without twisting the seat belt retractor as shown.

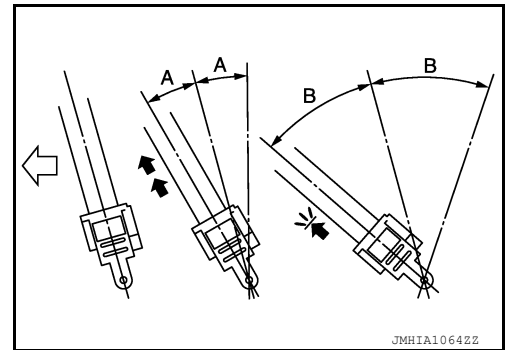
A : The webbing can be pulled out if the retractor is tilted 15° degree or less.

B : The webbing can not be pulled out if the retractor is tilted 45° degrees or more.

NOTE:

A and B show tilting angles.

⇐ : Front



3. Replace the seat belt retractor if it does not operate within specifications.

REAR SEAT BELT CENTER RETRACTOR OFF-VEHICLE CHECK

1. Remove the rear seat belt center retractor. Refer to [SB-14. "Exploded View"](#).
2. Slowly pull out webbing while tilting the seat belt retractor forward from the mounted position without twisting the seat belt retractor as shown.

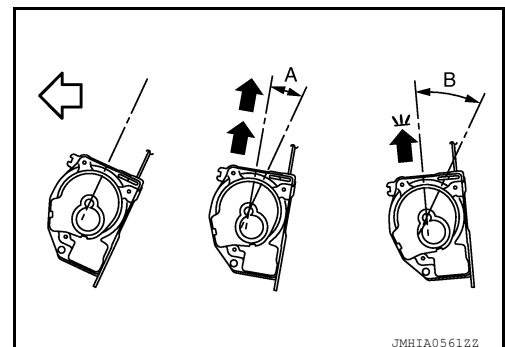
A : The webbing can be pulled out if the retractor is tilted 15° degree or less.

B : The webbing can not be pulled out if the retractor is tilted 45° degrees or more.

NOTE:

A and B show tilting angles.

⇐ : Front



3. Replace the seat belt retractor if it does not operate within specifications.

FRONT SEAT BELT

< REMOVAL AND INSTALLATION >

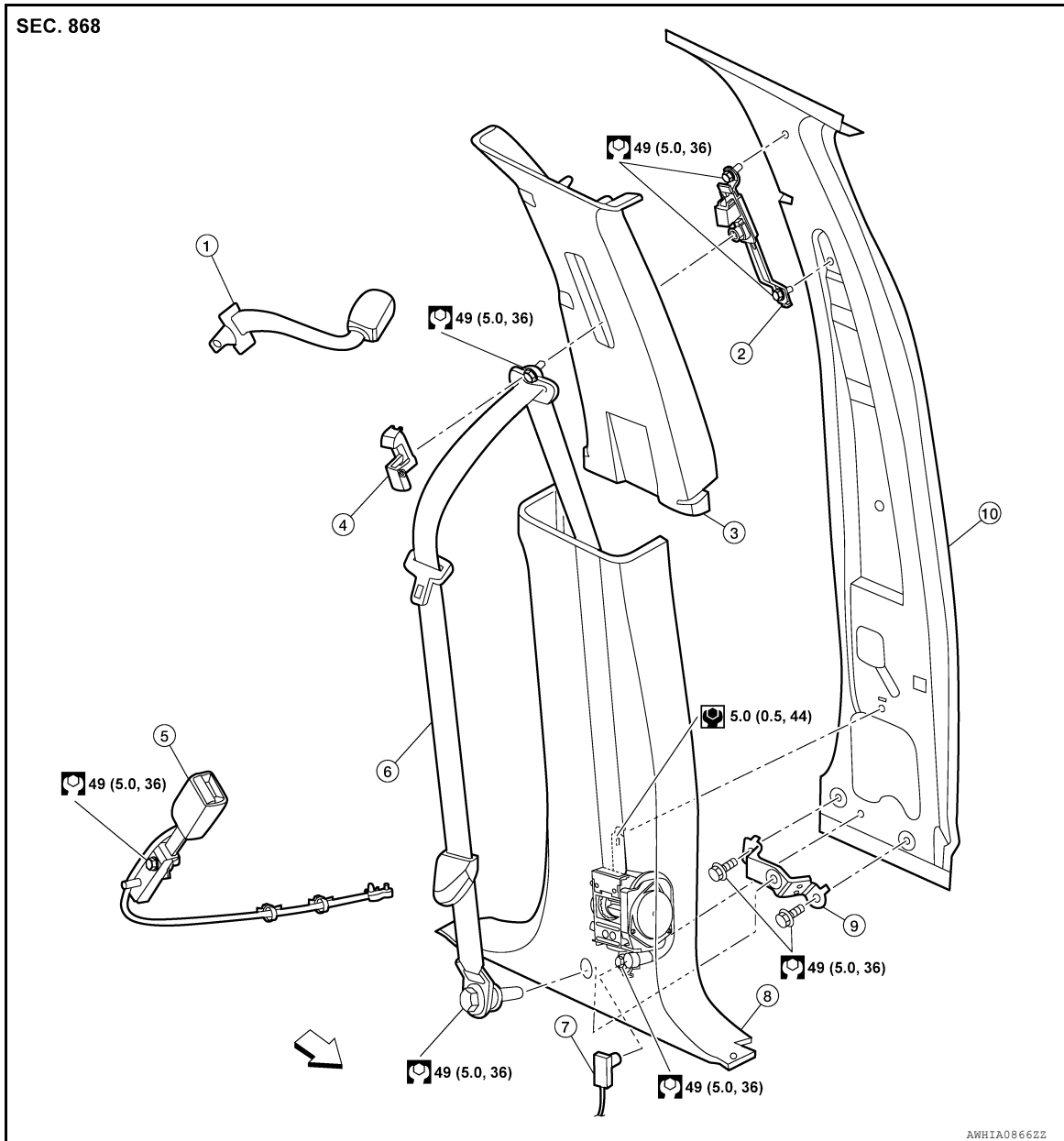
REMOVAL AND INSTALLATION

FRONT SEAT BELT

Exploded View

INFOID:0000000014392297

WITH SEPARATE SEATS

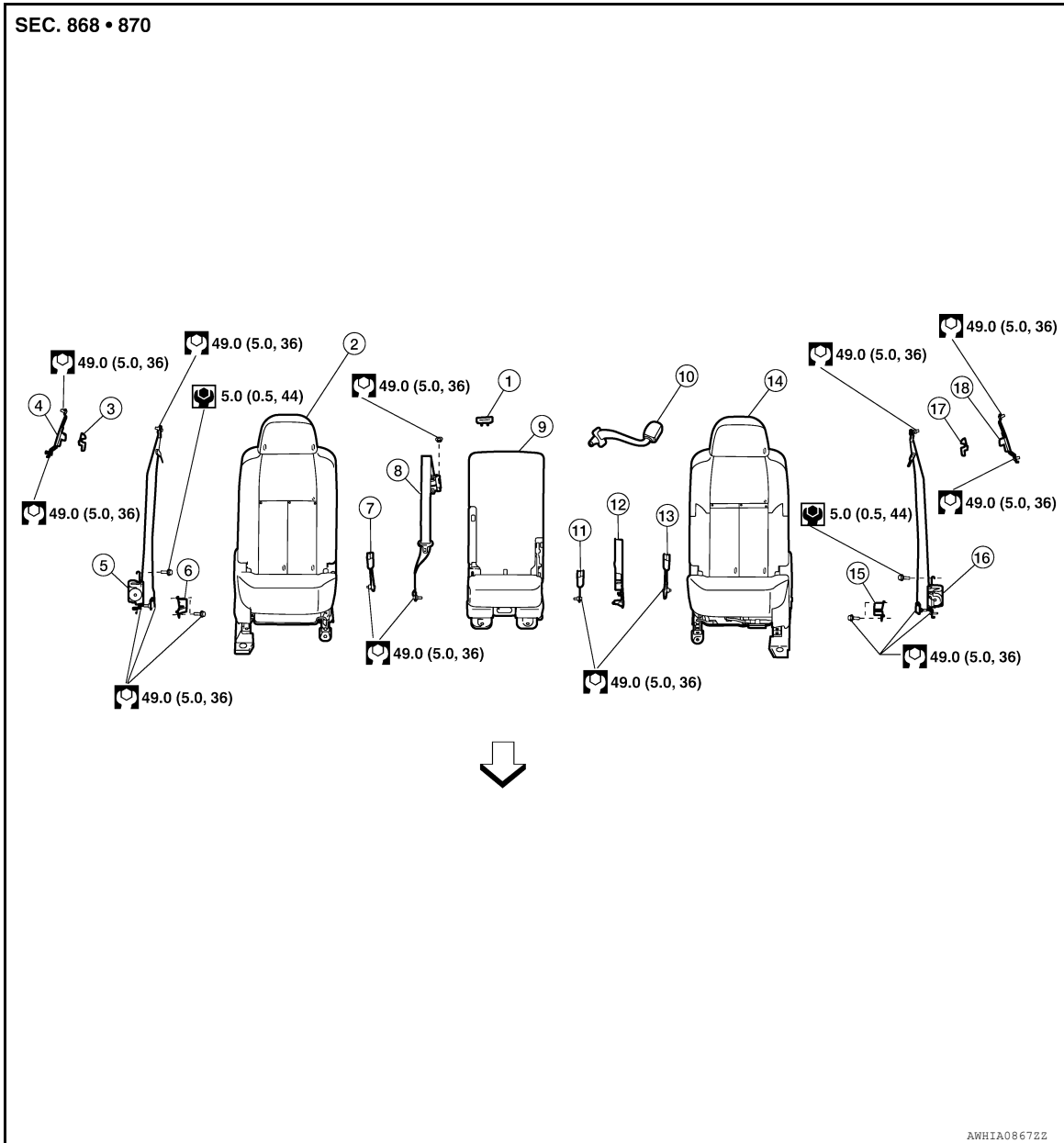


- | | | |
|------------------------------------|---------------------------------|---|
| 1. Seat belt extender | 2. Seat belt height adjuster | 3. Center pillar upper finisher |
| 4. D-ring anchor bolt cover | 5. Seat belt buckle | 6. Seat belt retractor and belt assembly (LH) |
| 7. Seat belt pre-tensioner harness | 8. Center pillar lower finisher | 9. Seat belt anchor bracket |
| 10. Center pillar | | |

FRONT SEAT BELT

< REMOVAL AND INSTALLATION >

WITH FRONT BENCH SEAT



- | | | |
|-----------------------------------|--|---|
| 1. Seat belt guide | 2. Front seat (RH) | 3. Seat belt height adjuster cover (RH) |
| 4. Seat belt height adjuster (RH) | 5. Seat belt retractor (RH) | 6. Seat belt anchor bracket (RH) |
| 7. Seat belt buckle (RH) | 8. Seat belt retractor (center) | 9. Front seat (center) |
| 10. Seat belt extender | 11. Seat belt buckle (center) | 12. Seat hinge finisher (LH) |
| 13. Seat belt buckle (LH) | 14. Front seat (LH) | 15. Seat belt anchor bracket (LH) |
| 16. Seat belt retractor (LH) | 17. Seat belt height adjuster cover (LH) | 18. Seat belt height adjuster (LH) |

⇐ Front

SEAT BELT RETRACTOR

SEAT BELT RETRACTOR : Removal and Installation

INFOID:000000014392298

SEAT BELT RETRACTOR - (LH/RH)

Removal

WARNING:

FRONT SEAT BELT


< REMOVAL AND INSTALLATION >

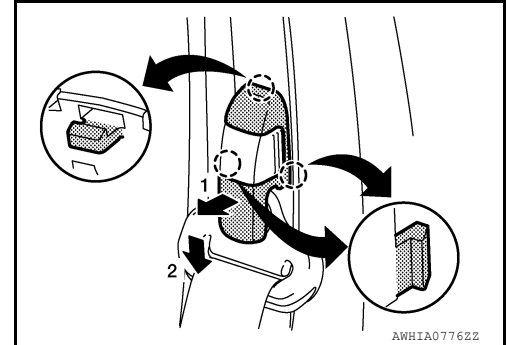
- Before servicing the SRS, turn the ignition switch off, disconnect the battery or batteries, then wait at least three minutes.
- Do not drop the seat belt retractor. Always handle it with care.
- Always point pre-tensioner cylinder away from body when handling.

1. Remove center pillar lower finisher. Refer to [INT-23, "CENTER PILLAR LOWER FINISHER : Removal and Installation"](#).

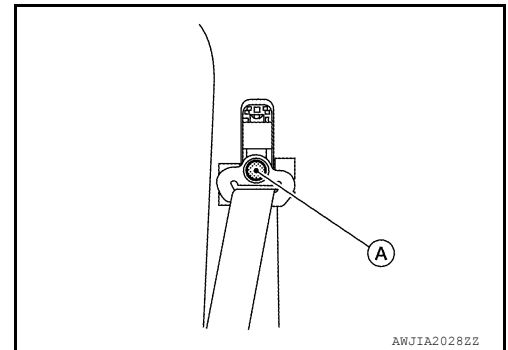
2. Remove shoulder anchor using the following procedure:

- a. Release pawls and then remove the shoulder anchor cover in the sequence shown.

 : Pawl

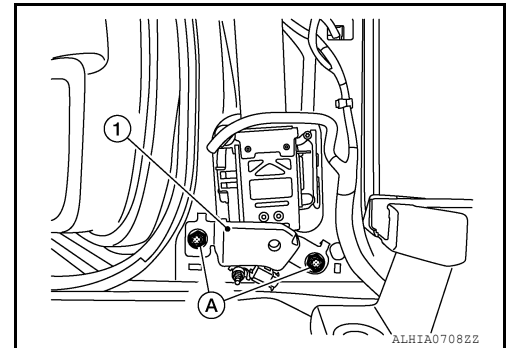


- b. Remove shoulder anchor bolt (A).

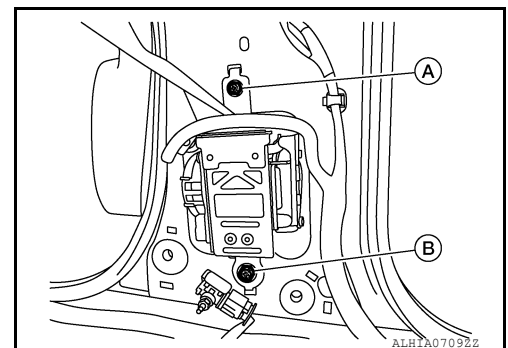


3. Remove seat belt retractor, using the following procedure:

- a. Remove bolts (A) and seat belt anchor bracket (1).



- b. Remove seat belt retractor screw (A) and anchor bolt (B).



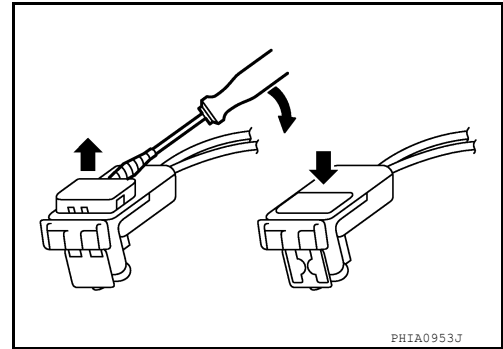
- c. Disconnect seat belt pre-tensioner harness connector (if equipped).

CAUTION:

FRONT SEAT BELT

< REMOVAL AND INSTALLATION >

- For installing/removing seat belt pre-tensioner harness connector, insert thin screwdriver wrapped in tape into notch, lift lock and remove connector.
- Install harness connector with lock raised, and push lock into connector.
- After installing harness connector, check that the lock is pushed securely into it.



d. Remove seat belt retractor.

Installation

Installation is in the reverse order of removal.

CAUTION:

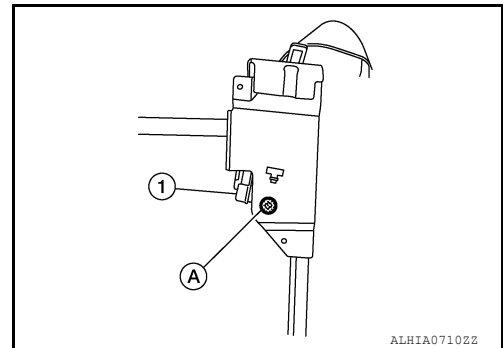
- Tighten D-ring anchor bolt and seat belt retractor bolt and screw to specification. Refer to [SB-8, "Exploded View"](#).
- Make sure seat belt height adjuster is locked in lowest position and is aligned with center pillar upper finisher opening during installation.
- Make sure both the D-ring anchor and seat belt height adjuster operate freely.
- Always perform an inspection after repair to make sure system is functioning within specifications. Refer to [SB-5, "Inspection"](#).

SEAT BELT CENTER

Removal

WARNING:

- Before servicing the SRS, turn the ignition switch off, disconnect the battery or batteries, then wait at least three minutes.
 - Do not drop the seat belt retractor. Always handle it with care.
 - Always point pre-tensioner cylinder away from body when handling.
1. Disassemble front center seat. Refer to [SE-131, "CENTER SEAT : Seatback"](#).
 2. Remove bolt (A) and seat belt retractor (1).



Installation

Installation is in the reverse order of removal.

CAUTION:

- Tighten D-ring anchor bolt to specification. Refer to [SB-8, "Exploded View"](#).
- Make sure the D-ring anchor operates freely.
- Always perform an inspection after repair to make sure system is functioning within specifications. Refer to [SB-5, "Inspection"](#).

SEAT BELT HEIGHT ADJUSTER

SEAT BELT HEIGHT ADJUSTER : Removal and Installation

INFOID:0000000014392299

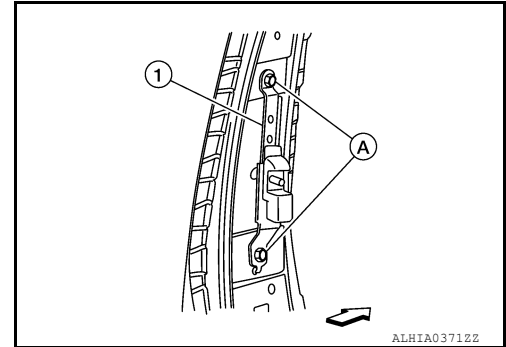
REMOVAL

FRONT SEAT BELT

< REMOVAL AND INSTALLATION >

1. Remove center pillar upper finisher. Refer to [INT-23, "CENTER PILLAR UPPER FINISHER : Removal and Installation"](#).
2. Remove bolts (A) and seat belt height adjuster (1).

⇐ : Front



INSTALLATION

Installation is in the reverse order of removal.

CAUTION:

- Make sure that the seat belt height adjuster is locked in the lowest position and is aligned with the center pillar upper finisher opening during installation.
- Tighten the D-ring anchor bolt and seat belt height adjuster bolts to specification. Refer to [SB-8, "Exploded View"](#).
- Make sure both the D-ring anchor and seat belt height adjuster operate freely.
- Always perform an inspection after repair to make sure the system is functioning within specifications. Refer to [SB-5, "Inspection"](#).

SEAT BELT BUCKLE

SEAT BELT BUCKLE : Removal and Installation

INFOID:0000000014392300

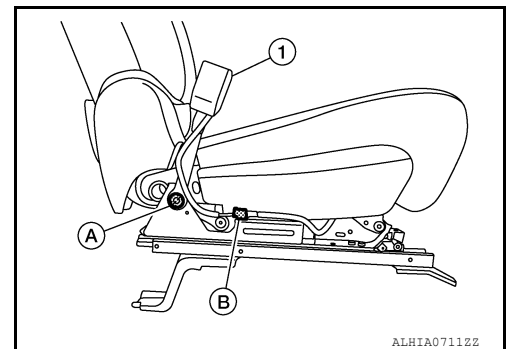
SEAT BELT BUCKLE (LH/RH)

Removal

NOTE:

LH shown, RH similar.

1. Remove front seat. Refer to [SE-100, "Removal and Installation - Captain Seats"](#).
2. Remove seat belt buckle anchor bolt (A), then disconnect harness connector (B) from seat belt buckle (1).



INSTALLATION

Installation is in the reverse order of removal.

CAUTION:

- Tighten seat belt buckle anchor nut to specification. Refer to [SB-8, "Exploded View"](#).
- Always perform an inspection after repair to make sure system is functioning within specifications. Refer to [SB-5, "Inspection"](#).

SEAT BELT BUCKLE (CENTER)

Removal

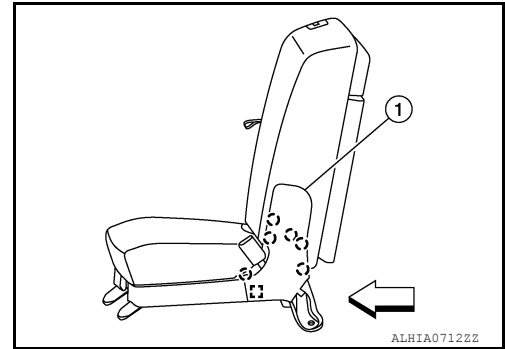
1. Remove front center seat. Refer to [SE-101, "Removal and Installation - Center Seat"](#).

FRONT SEAT BELT

< REMOVAL AND INSTALLATION >

2. Release pawls and clip, then remove seat hinge finisher [LH (1)].

○ : Pawl
□ : Clip
⇐ : Front



3. Remove seat belt buckle anchor bolt, then remove seat belt buckle (center).

INSTALLATION

Installation is in the reverse order of removal.

CAUTION:

- Tighten seat belt buckle anchor bolt to specification. Refer to [SB-8, "Exploded View"](#).
- Always perform an inspection after repair to make sure system is functioning within specifications. Refer to [SB-5, "Inspection"](#).

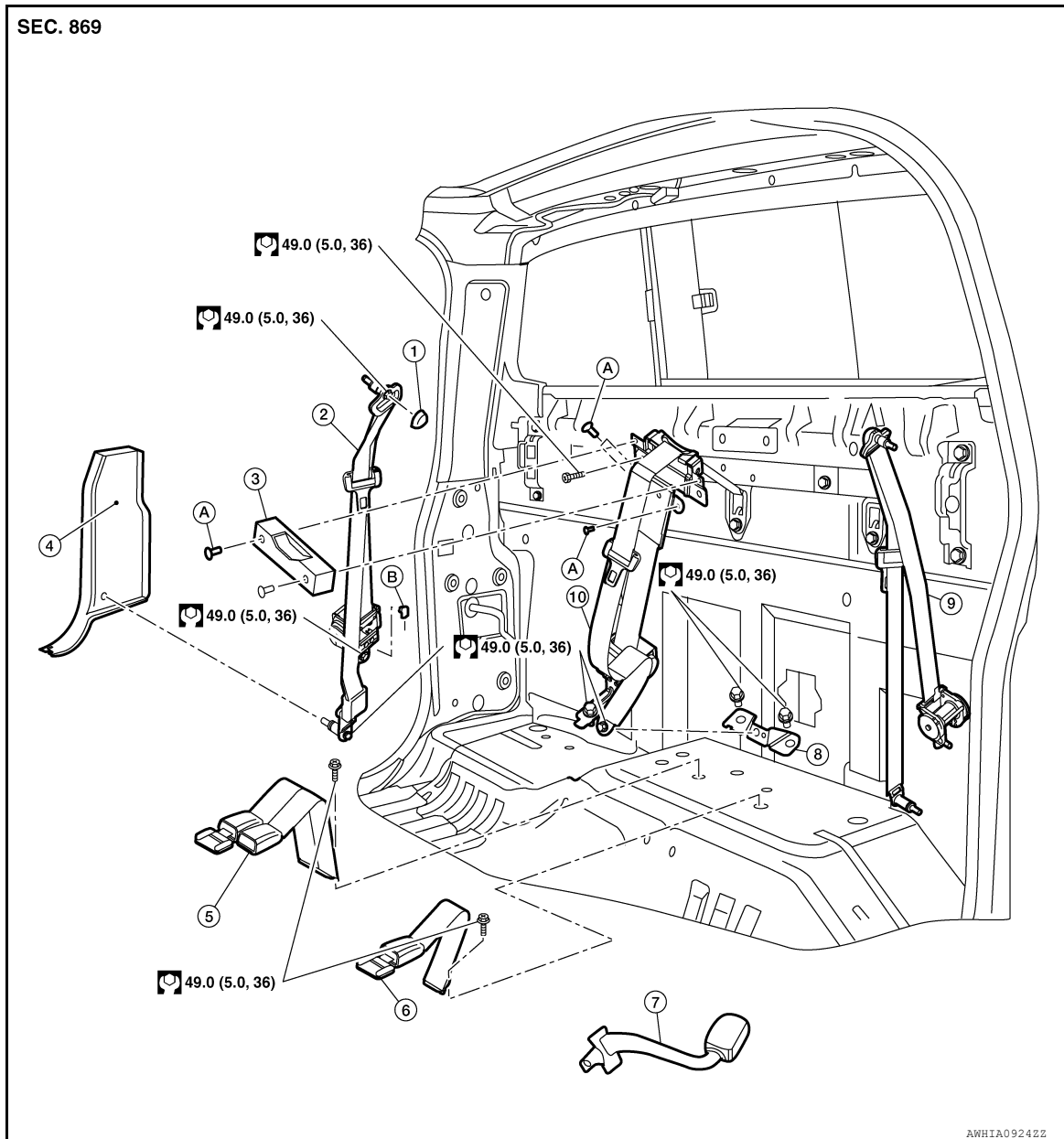
REAR SEAT BELT

< REMOVAL AND INSTALLATION >

REAR SEAT BELT

Exploded View

INFOID:0000000014392301



- | | | |
|-------------------------------|------------------------------------|--------------------------------|
| 1. D-ring anchor bolt cover | 2. Seat belt retractor (RH) | 3. Center anchor bracket cover |
| 4. Rear pillar lower finisher | 5. Seat belt buckles (RH/center) | 6. Seat belt buckle (LH) |
| 7. Seat belt extender | 8. Center seat belt anchor bracket | 9. Seat belt retractor (LH) |
| A. Center seat belt retractor | A. Clip | B. Seat belt retractor harness |

SEAT BELT RETRACTOR

SEAT BELT RETRACTOR : Removal and Installation

INFOID:0000000014392302

SEAT BELT RETRACTOR (RH/LH)

Removal

1. Remove rear pillar lower finisher. Refer to [INT-25. "REAR PILLAR FINISHER : Removal and Installation"](#).
2. Remove seat belt retractor bolt and seat belt retractor.

REAR SEAT BELT

< REMOVAL AND INSTALLATION >

Installation

Installation is in the reverse order of removal.

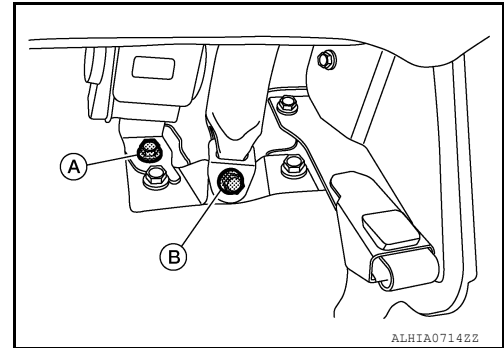
CAUTION:

- Tighten D-ring anchor bolt, seat belt retractor bolt, and lower D-ring anchor bolt to specification. Refer to [SB-14, "Exploded View"](#).
- Make sure D-ring anchor operates freely.
- Always perform an inspection after repair to make sure system is functioning within specifications. Refer to [SB-5, "Inspection"](#).

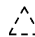
SEAT BELT RETRACTOR (CENTER)

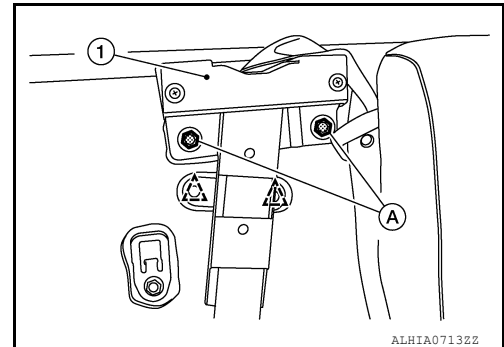
Removal

1. Fold seat cushion (RH) to the upright and locked position.
2. Remove seat belt retractor (center) bolt and washer (A), then remove seat belt D-ring anchor bolt (B).



3. Route seat belt D-ring anchor through the seat cushion and set aside.
4. Release rear seatback (RH) and fold flat.
5. Release clips and remove bolts (A), then remove seat belt retractor [center (1)].

 : Clip



Installation

Installation is in the reverse order of removal.

CAUTION:

- Tighten D-ring anchor bolt and seat belt retractor bolt to specification. Refer to [SB-14, "Exploded View"](#).
- Always perform an inspection after repair to make sure system is functioning within specifications. Refer to [SB-5, "Inspection"](#).

SEAT BELT BUCKLE

SEAT BELT BUCKLE : Removal and Installation

INFOID:000000014392303

REAR SEAT BELT BUCKLE (RH/CENTER)

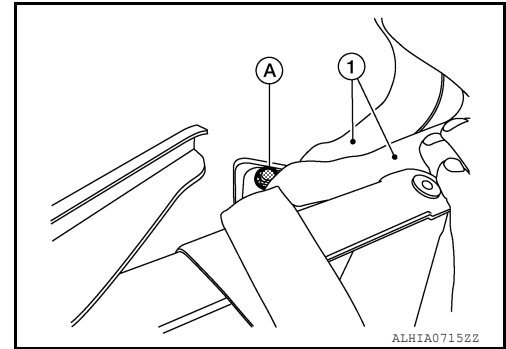
Removal

1. Route seat belt buckles (RH/center) through the seat cushion (RH).
2. Fold the seat cushion (RH) into the upright and locked position.

REAR SEAT BELT

< REMOVAL AND INSTALLATION >

3. Remove anchor bolt (A) and seat belt buckles [RH/center (1)].



Installation

Installation is in the reverse order of removal.

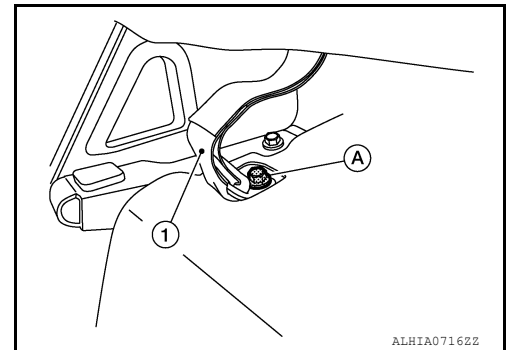
CAUTION:

- Tighten anchor bolts to specification. Refer to [SB-14, "Exploded View"](#).
- Always perform an inspection after repair to make sure system is functioning within specifications. Refer to [SB-5, "Inspection"](#).

REAR SEAT BELT BUCKLE (LH)

Removal

1. Route seat belt buckle (LH) through the seat cushion (LH).
2. Fold the seat cushion (LH) into the upright and locked position.
3. Remove anchor bolt (A) and seat belt buckle [LH (1)].



INSTALLATION

Installation is in the reverse order of removal.

CAUTION:

- Tighten anchor bolts to specification. Refer to [SB-14, "Exploded View"](#).
- Always perform an inspection after repair to make sure system is functioning within specifications. Refer to [SB-5, "Inspection"](#).

LATCH (LOWER ANCHORS AND TETHER FOR CHILDREN) SYSTEM

< REMOVAL AND INSTALLATION >

LATCH (LOWER ANCHORS AND TETHER FOR CHILDREN) SYSTEM

Removal and Installation

INFOID:0000000014392304

NOTE:

The LATCH (Lower Anchors and Tether for Children) system is not serviceable.

A

B

C

D

E

F

G

SB

I

J

K

L

M

N

O

P

< REMOVAL AND INSTALLATION >

Removal and Installation

SEC. 869

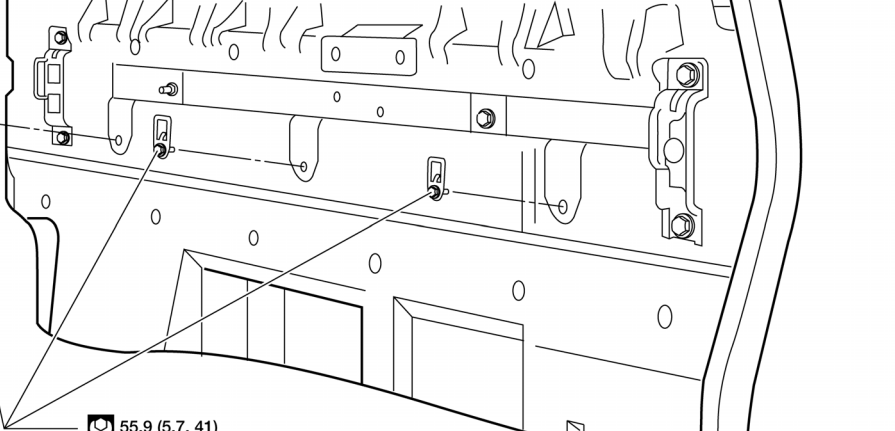


Diagram illustrating the installation of the rear cover (SEC. 869) using screws (55.9 (5.7, 41)). The diagram shows the rear panel with three screws being inserted into the top edge. A callout indicates the screw part number 55.9 (5.7, 41).

AWHIA0265GB

1. Fold rear seatbacks down.
2. Remove bolts and tether anchors.

Installation is in the reverse order of removal.