

LOCKING HUBS

1998 Mitsubishi Montero

1997-98 DRIVE AXLES
Mitsubishi Locking Hubs

Montero, Montero Sport

DESCRIPTION

Vehicles are equipped with an automatic locking clutch. Locking clutch engages, providing full time AWD operation, when 4WD (4H) is selected at transfer case, at speeds up to 62 MPH. Selecting center differential lock position (4HLc or 4HLLc), while in AWD at 4 MPH or less, provides 4WD operation. Center differential lock disengages when 4H or 2H is selected. Locking clutch disengages when 2H is selected.

REMOVAL & INSTALLATION

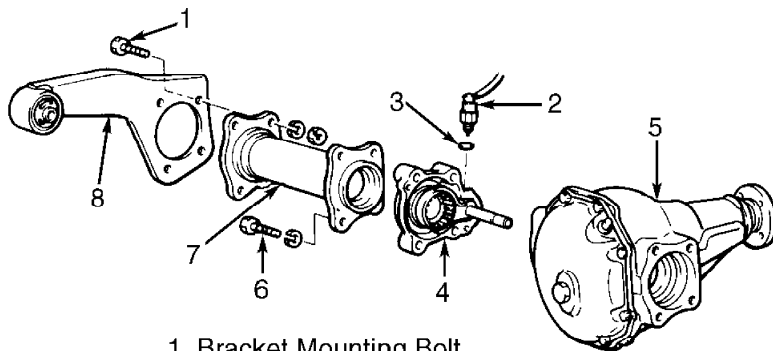
AUTOMATIC LOCKING HUBS

Removal & Installation

1) Remove right side inner shaft for automatic locking clutch removal. See INNER SHAFT & BEARING in DIFFERENTIAL & AXLE SHAFTS - FRONT article. With inner shaft removed, remove locking clutch engage switch. See Fig. 1.

2) Remove 4 inner shaft tube-to-differential mounting bracket bolts. Pivot differential mounting bracket. Remove 4 inner shaft tube-to-differential carrier assembly mounting bolts. Pull inner shaft tube and automatic locking clutch out of differential carrier assembly.

3) To install, reverse removal procedure. Tighten inner shaft tube bolts to 65 ft. lbs. (90 N.m) and locking clutch engage switch to 26 ft. lbs. (36 N.m).



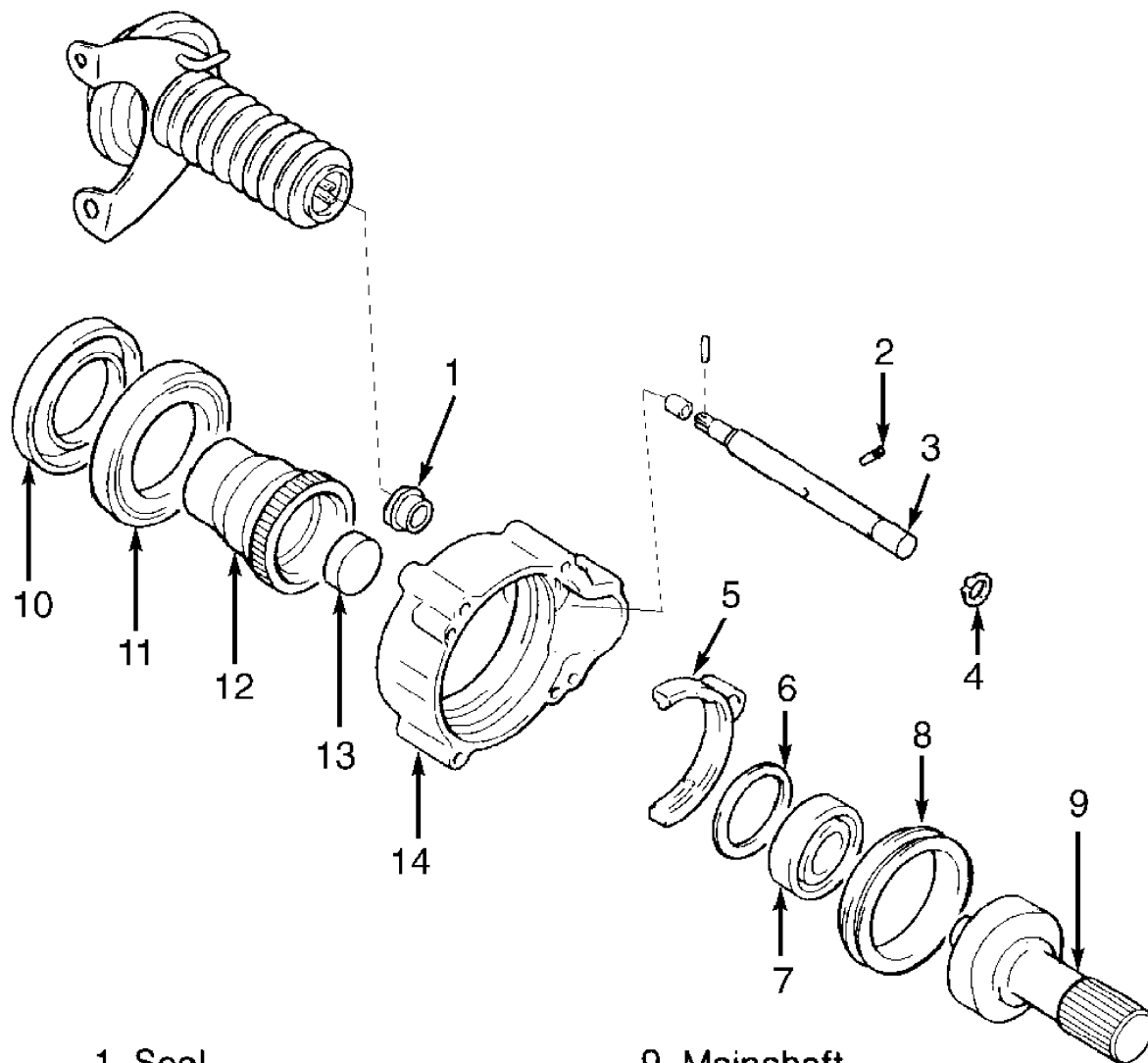
1. Bracket Mounting Bolt
2. Locking Clutch Engage Switch
3. Gasket
4. Locking Clutch Assembly
5. Carrier Assembly
6. Carrier Assembly Mounting Bolt
7. Inner Shaft Tube
8. Differential Mounting Bracket

93G01149

Fig. 1: Identifying Automatic Locking Clutch Components
Courtesy of Mitsubishi Motor Sales of America.

OVERHAUL

NOTE: Locking clutch overhaul procedure is not available from manufacturer. Use illustration for exploded view of locking clutch. See Fig. 2.



1. Seal
2. Spring Pin
3. Shift Rod
4. Snap Ring
5. Shift Fork
6. Spacer
7. Bearing
8. Clutch Sleeve

9. Mainshaft
10. Seal
11. Bearing
12. Clutch Gear
13. Cap
(1995 Montero Only)
14. Locking Clutch
Housing

97B07064
Fig. 2: Exploded View Of Locking Clutch
Courtesy of Mitsubishi Motor Sales of America.

TORQUE SPECIFICATIONS

TORQUE SPECIFICATIONS

Application	Ft. Lbs. (N.m)
Hub Cover	13-25 (18-34)
Locking Hub Bolts	36-43 (49-58)
Wheel Lug Nut	
Montero	72-87 (98-118)
Montero Sport	
Aluminum Wheel	73-86 (99-117)
Steel Wheel	87-101 (118-137)