



EXHAUST SYSTEM

CONTENTS

SPECIFICATIONS	2	TROUBLESHOOTING	2
GENERAL SPECIFICATIONS	2	COMPONENT SERVICE	3
TORQUE SPECIFICATIONS	2	EXHAUST PIPES AND MUFFLERS	3



SPECIFICATIONS/ TROUBLESHOOTING

GENERAL SPECIFICATIONS

Exhaust system

Muffler

Coupling

For Federal (not available in California)

For California (can also be sold in Federal States)

Suspension system

Expansion resonance type

Spherical coupling

Flat coupling

Rubber hangers and suspender

TORQUE SPECIFICATIONS

Nm (ft.lbs.)

Front exhaust pipe to catalytic converter	15-25 (11-18)
Front exhaust pipe to main muffler assembly	20-30 (15-22)
Front exhaust pipe to suspender	8-12 (6-9)
Suspender to No. 4 crossmember	8-12 (6-9)
Main muffler assembly to hangers	5-10 (4-7)

TROUBLESHOOTING

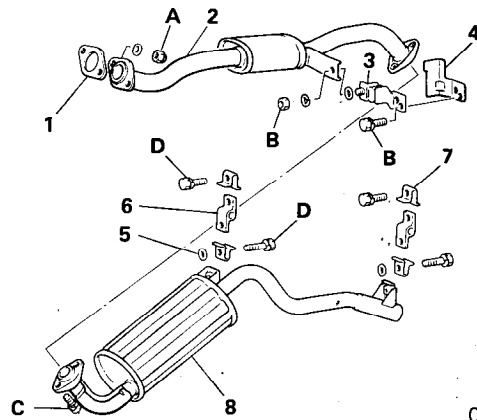
Symptom	Probable cause	Remedy
Exhaust gas leakage	Loose connections	Retighten
	Broken pipe or muffler	Repair or replace
Abnormal noise	Broken separator in muffler Broken hangers or suspender	Replace
	Interference of pipe or muffler with vehicle body	Correct
	Broken pipe or muffler	Repair or replace



COMPONENTS

- | | |
|-----------------------|-----------------|
| 1. Gasket | 5. Seat |
| 2. Front exhaust pipe | 6. Hanger |
| 3. Suspender | 7. Plate |
| 4. Protector | 8. Main muffler |

	Nm	ft.lbs.
A	15-25	11-18
B	8-12	6-9
C	20-30	15-22
D	5-10	4-7

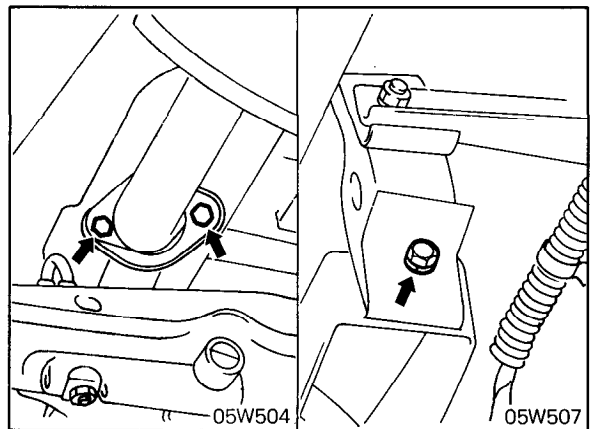


05W511

REMOVAL

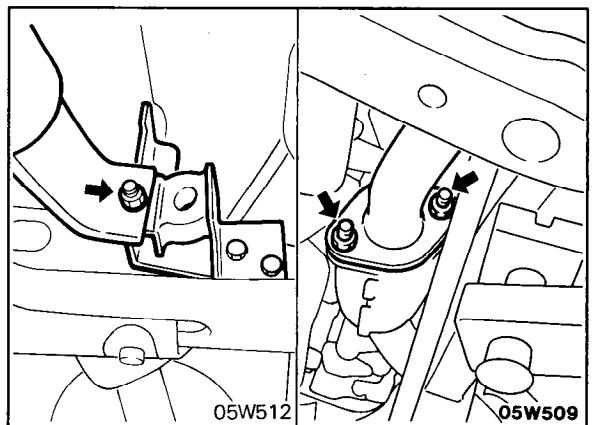
Main Muffler

1. Disconnect the main muffler from the front exhaust pipe. (05W504)
2. Remove the hangers and take out the main muffler. (05W507)

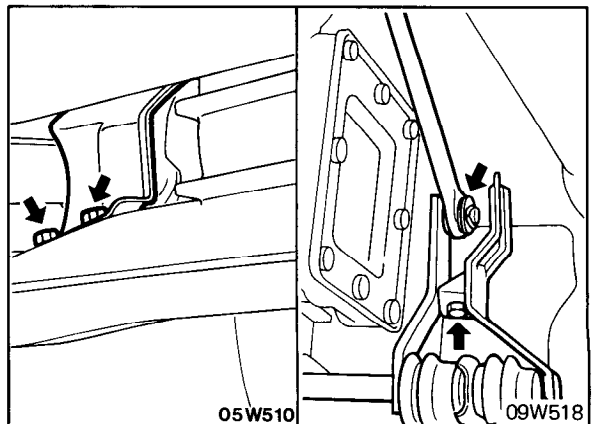


Front Exhaust Pipe

1. Disconnect the front exhaust pipe from the main muffler.
2. Disconnect the front exhaust pipe from the suspender. (05W512)
3. Disconnect the front exhaust pipe from the catalytic converter and remove the front exhaust pipe. (05W509)



4. For vehicles with an automatic transmission, remove the No. 2 crossmember protector and the cross select shaft heat protector, disconnect the shaft control rod from the cross select shaft, and then remove the front extension pipe.





COMPONENT SERVICE-EXHAUST PIPES AND MUFFLERS

INSPECTION

1. Check mufflers and pipes for corrosion and damage.
2. Check hangers and suspender for deterioration and cracks.

INSTALLATION

1. Loosely install the front exhaust pipe and the main muffler, in that order.
2. Install the hangers and suspender, making sure that they are not strained or twisted.
3. Tighten the parts securely and then confirm that there is no interference with any body components.