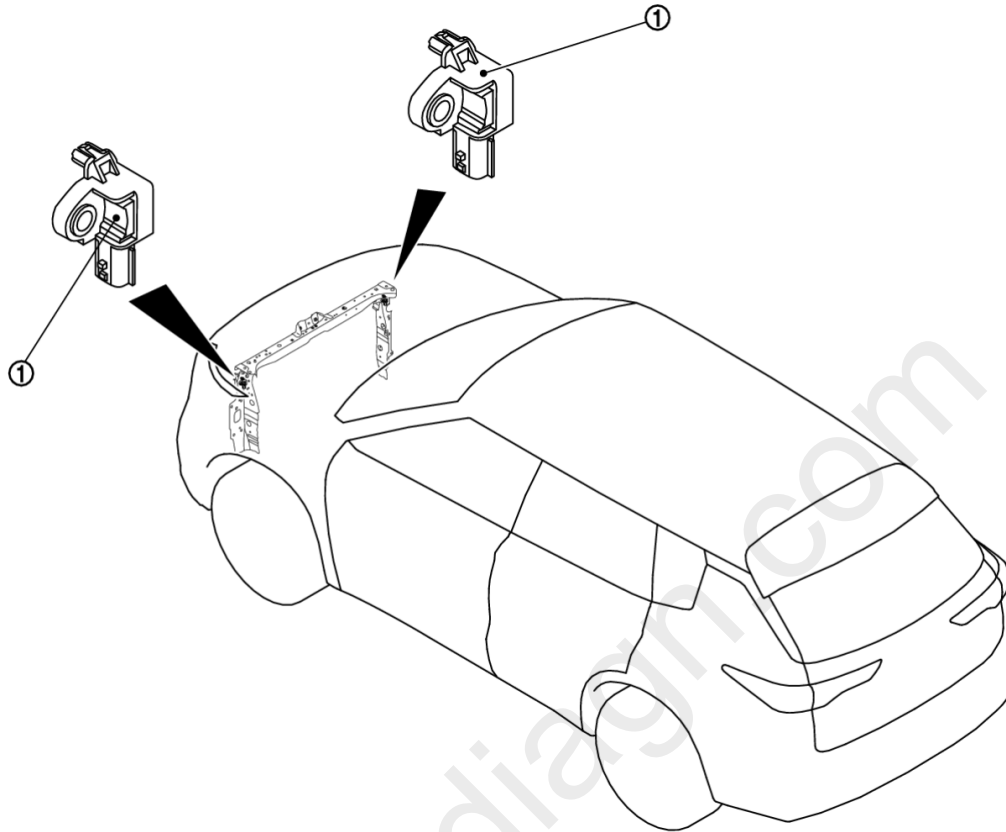


Crash Zone Sensor

- Crash zone sensor ① is installed to crash zone sensor bracket. Crash zone sensor integrates frontal collision “G” sensor which detects frontal collision impact that exceeds the specified limit of the vehicle.



◀ : Vehicle front

- In a frontal collision that exceeds the specified limit of the vehicle, crash zone sensor detects impact. If frontal collision safing sensor in air bag diagnosis sensor unit judges that impact is due to a collision, driver air bag, passenger air bag, driver knee air bag, passenger knee air bag and seat belt pre-tensioner (front and rear) operate.