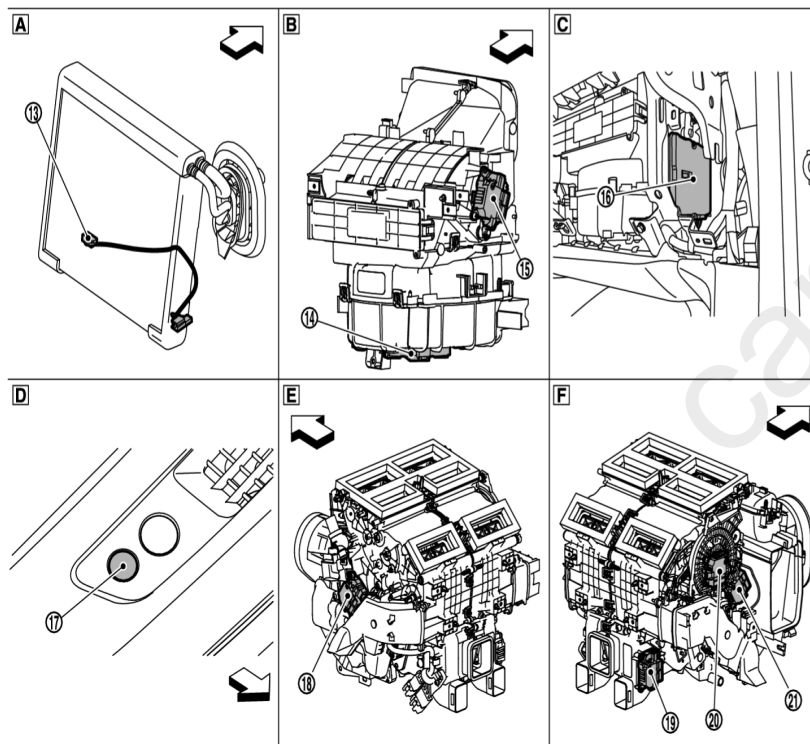
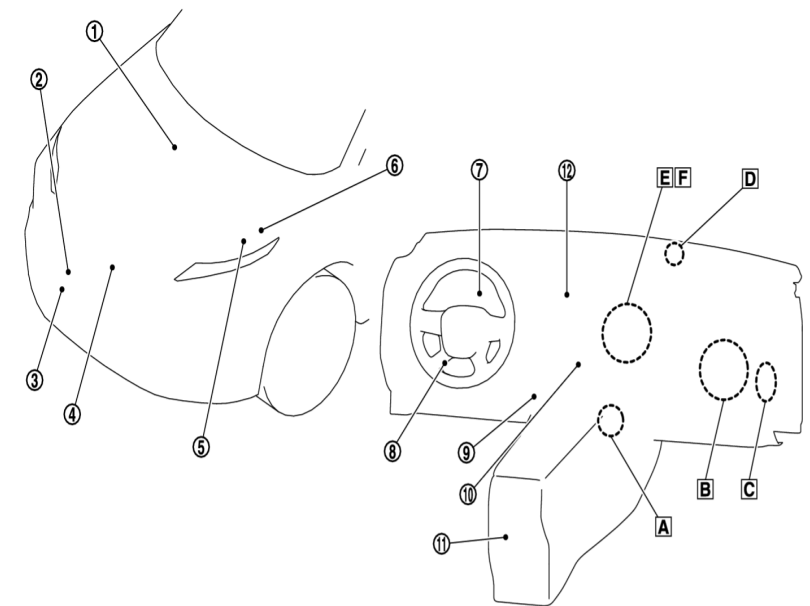




Component Parts Location

cardiagn.com



| | | |
|---|--|--|
| <p>ABS actuator and electric unit (control unit)</p> <p>① Refer to Component Parts Location for detailed installation location.</p> | <p>② Refrigerant pressure sensor</p> | <p>③ Ambient sensor</p> |
| <p>④ A/C compressor</p> | <p>⑤ ECM Refer to Component Parts Location for detailed installation location.</p> | <p>⑥ IPDM E/R Refer to Component Parts Location for detailed installation location.</p> |
| <p>⑦ Combination meter</p> | <p>⑧ BCM Refer to Component Parts Location for detailed installation location.</p> | <p>⑨ In-vehicle sensor</p> |
| <p>⑩ A/C switch assembly</p> | <p>⑪ Rear air control*</p> | <p>⑫ AV control unit Refer to Component Parts Location for detailed installation location.</p> |
| <p>⑬ Intake sensor</p> | <p>⑭ Front blower motor</p> | <p>⑮ Intake door motor</p> |
| <p>⑯ A/C amp.</p> | <p>⑰ Sunload sensor</p> | <p>⑱ Air mix door motor LH</p> |
| <p>⑲ Air mix door motor (rear)*</p> | <p>⑳ Mode door motor</p> | <p>㉑ Air mix door motor RH</p> |
| <p>A Evaporator</p> | <p>B Right side of blower unit assembly</p> | <p>C Glove box is removed</p> |
| <p>D Right side of instrument garnish</p> | <p>E Left side of heater & cooling unit assembly</p> | <p>F Right side of heater & cooling unit assembly</p> |
| <p>← Vehicle front</p> | | |

*: With rear air control

cardiagn.com