

# GROUP 52A

# INTERIOR

## CONTENTS

<b>SERVICE SPECIFICATIONS.....</b>	<b>52A-2</b>	REMOVAL AND INSTALLATION .....	52A-16
<b>SPECIAL TOOL.....</b>	<b>52A-2</b>	<b>INSIDE REAR VIEW MIRROR .....</b>	<b>52A-18</b>
<b>INSTRUMENT PANEL ASSEMBLY .</b>	<b>52A-2</b>	ADHESIVE .....	52A-18
REMOVAL AND INSTALLATION .....	52A-2	REMOVAL AND INSTALLATION .....	52A-18
DISASSEMBLY AND ASSEMBLY .....	52A-6	<b>SEAT ASSEMBLY .....</b>	<b>52A-19</b>
<b>FLOOR CONSOLE ASSEMBLY ....</b>	<b>52A-7</b>	FRONT SEAT ASSEMBLY .....	52A-19
FRONT FLOOR CONSOLE ASSEMBLY ..	52A-7	REMOVAL AND INSTALLATION .....	52A-19
REMOVAL AND INSTALLATION .....	52A-7	INSPECTION.....	52A-20
REAR FLOOR CONSOLE ASSEMBLY ...	52A-8	DISASSEMBLY AND REASSEMBLY .....	52A-21
REMOVAL AND INSTALLATION .....	52A-8	INSPECTION.....	52A-23
<b>TRIMS.....</b>	<b>52A-9</b>	SECOND SEAT ASSEMBLY .....	52A-24
INTERIOR TRIM.....	52A-9	REMOVAL AND INSTALLATION .....	52A-24
REMOVAL AND INSTALLATION .....	52A-9	DISASSEMBLY AND REASSEMBLY .....	52A-25
DOOR TRIM .....	52A-11	<b>SEAT BELT.....</b>	<b>52A-28</b>
REMOVAL AND INSTALLATION .....	52A-11	FRONT SEAT BELT .....	52A-28
TAILGATE TRIM.....	52A-14	REMOVAL AND INSTALLATION .....	52A-28
REMOVAL AND INSTALLATION .....	52A-14	INSPECTION.....	52A-28
<b>HEADLINING .....</b>	<b>52A-16</b>	REAR SEAT BELT .....	52A-29
		REMOVAL AND INSTALLATION .....	52A-29

## SERVICE SPECIFICATIONS

M1521000300393

## SEAT CUSHION HEATER

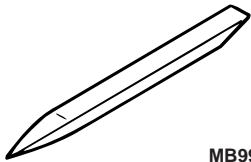
Item	Measured terminals	Standard value
Seat cushion heater (interior temperature 20°C)	Seat cushion heater (terminal No.1) – Seat cushion heater (terminal No.2)	4.32 to 5.28 Ω
	Seat cushion heater (terminal No.1) – Seatback heater (terminal No.1)	4.61 to 5.63 Ω

## SEATBACK HEATER

Item	Measured terminals	Standard value
Seatback heater (interior temperature 20°C)	Seatback heater (terminal No.1) – Seatback heater (terminal No.2)	4.90 to 5.98 Ω

## SPECIAL TOOL

M1521000600480

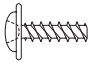
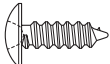
Tool	Number	Name	Use
 MB990784	MB990784	Ornament remover	Removal of switches and trims

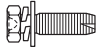
## INSTRUMENT PANEL ASSEMBLY

## REMOVAL AND INSTALLATION

M1521001703133

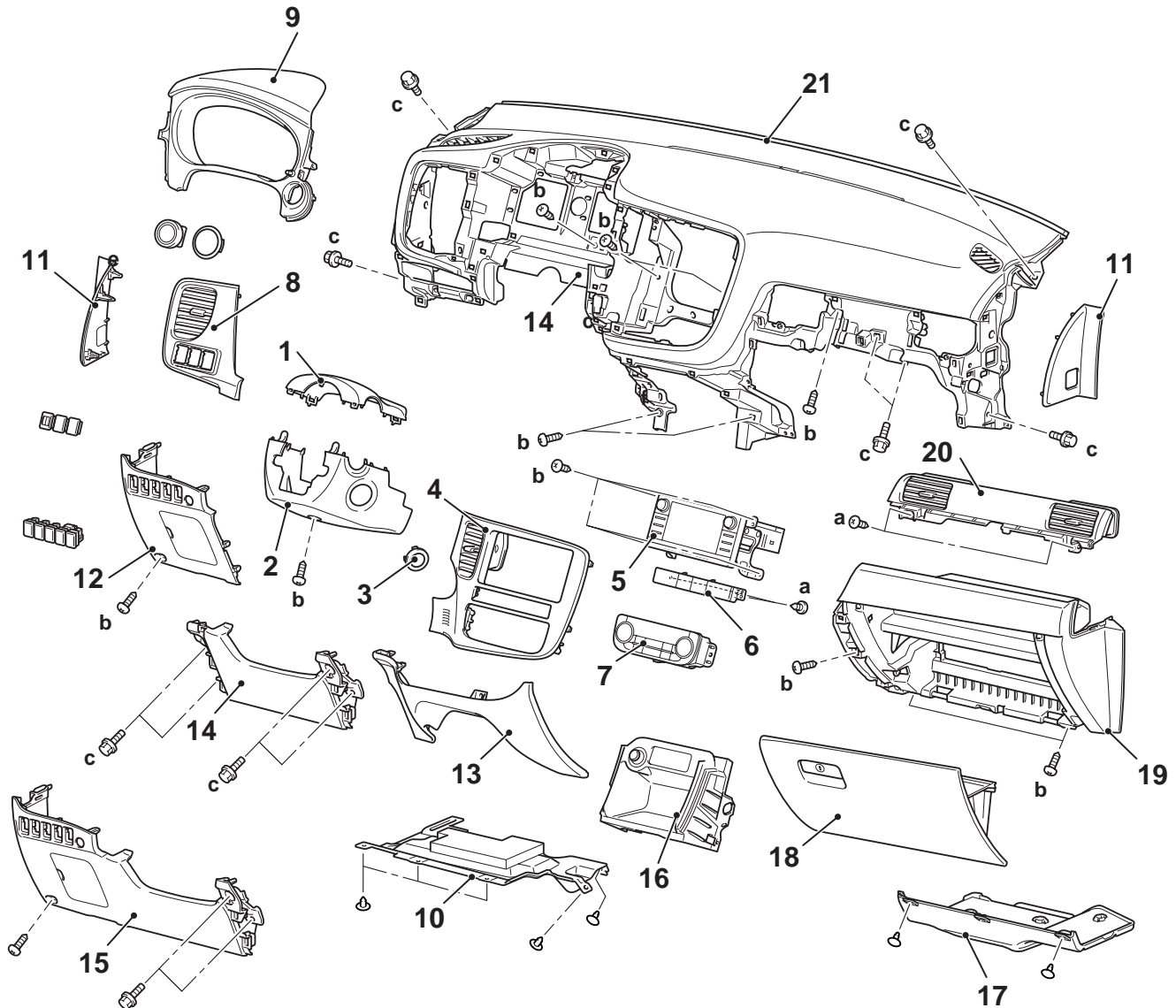
The following bolts and screws are used for installing the instrument panel: The bolts and screws are indicated by symbols in the illustrations in sections "REMOVAL AND INSTALLATION" and "DISASSEMBLY AND ASSEMBLY."

Name	Symbol	Size (D × L) mm	Colour	Shape
Tapping screw	a	5 × 14	—	 AC104436
	b	5 × 16	—	 AC104450

Name	Symbol	Size (D × L) mm	Colour	Shape
Bolt with washer	c	6 × 16	—	 AC104429

**⚠ CAUTION**

- For the removal of the front passenger's air bag module, refer to GROUP 52B – Service Precautions , Driver's and Front Passenger's Air Bag Module, and Clock Spring before operation.
- Do not subject SRS-ECU to any shocks when removing or installing the instrument panel.



ACB05036 AB

**Removal steps**

1. Steering column upper cover
2. Steering column lower cover
3. Ignition key cover
4. Centre panel assembly
5. Radio and CD player assembly
6. Hazard indicators assembly
7. Heater controller assembly (Refer to GROUP 55 – Heater control unit.)

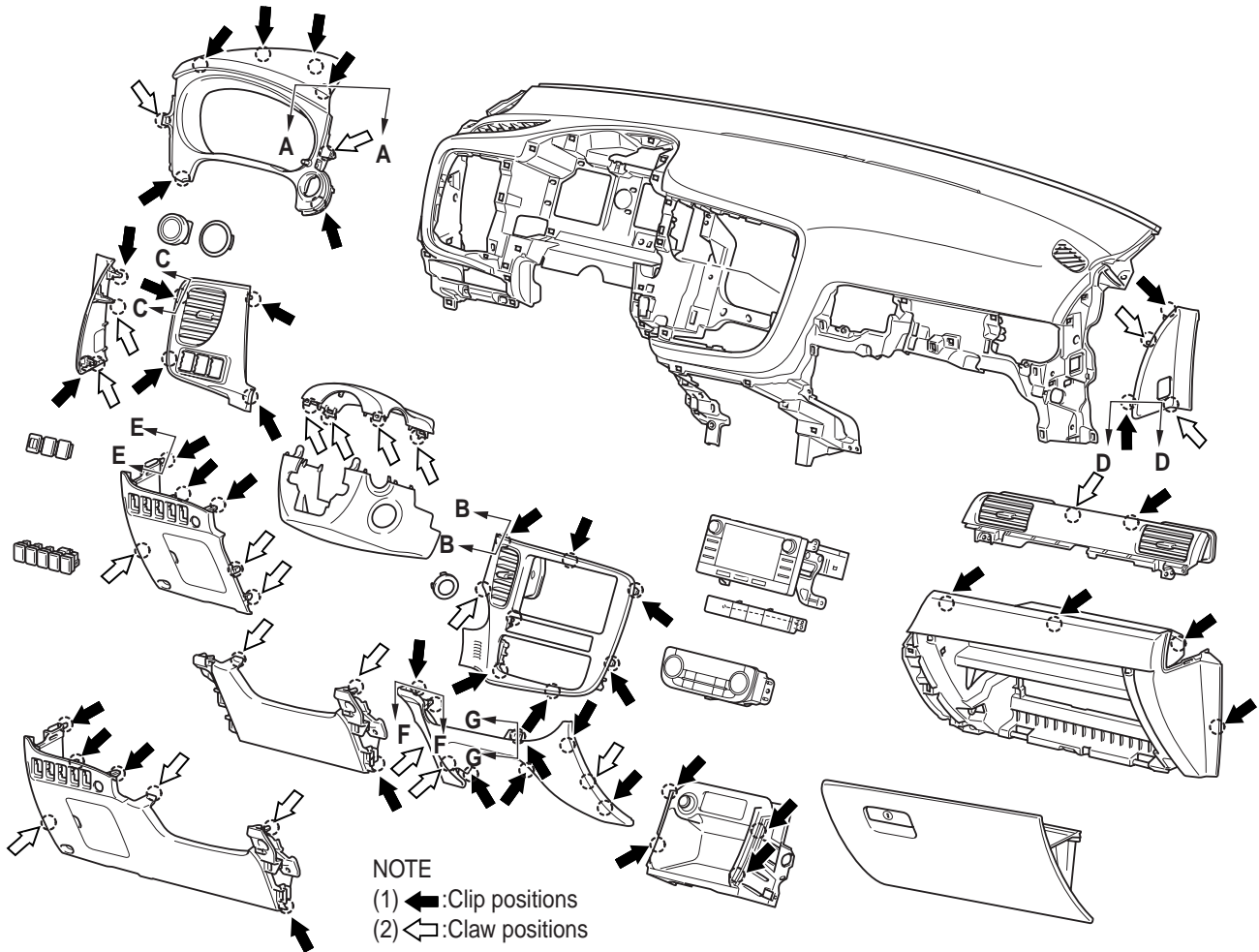
**Removal steps (Continued)**

8. Side air outlet panel assembly
9. Combination meter bezel
10. Bottom cover assembly (driver's side)
11. Side cover
12. Instrument panel lower LH <Vehicles with Knee air bag>
13. Centre lower panel assembly

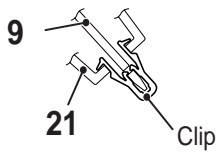
**Removal steps (Continued)**

14. Instrument panel lower RH  
<Vehicles with Knee air bag>
15. Instrument panel lower <Vehicles  
without Knee air bag>
  - Front floor console assembly (Refer  
to ).
16. Centre lower box assembly
17. Bottom cover assembly  
(passenger's side)
18. Glove box
19. Glove box assembly
20. Ornament panel assembly
  - Glove box lamp connector
  - Passenger's (front) air bag module  
connector connection (Refer to  
GROUP 52B – Passenger's (front)  
air bag module .)
  - Front pillar trim (Refer to ).
21. Instrument panel assembly

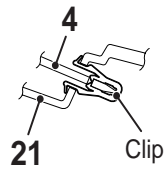
# CLIP AND CLAW POSITIONS



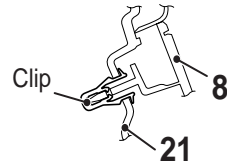
Section A – A



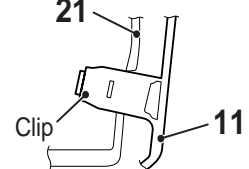
Section B – B



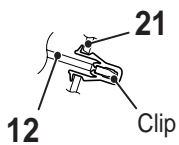
Section C – C



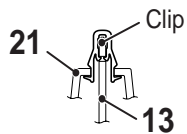
Section D – D



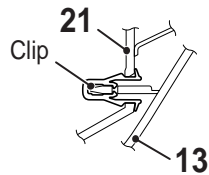
Section E – E



Section F – F



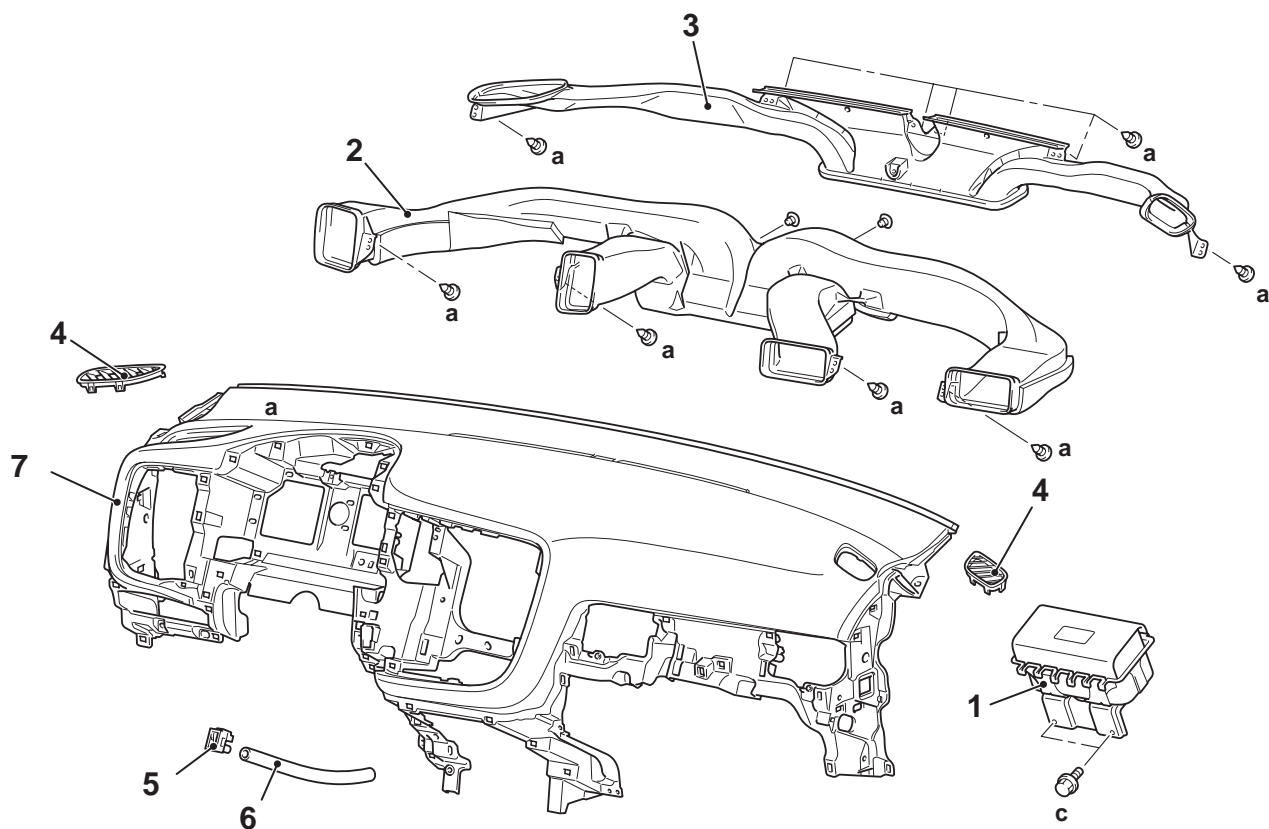
Section G – G



NOTE: Each number in the illustration indicates a part number.

## DISASSEMBLY AND ASSEMBLY

M1521001901164



ACB05040AB

**Disassembly steps**

1. Passenger's (front) air bag module.
2. Ventilation air distribution duct
3. Defroster nozzle
4. Instrument trim panel side air outlet

**Disassembly steps (Continued)**

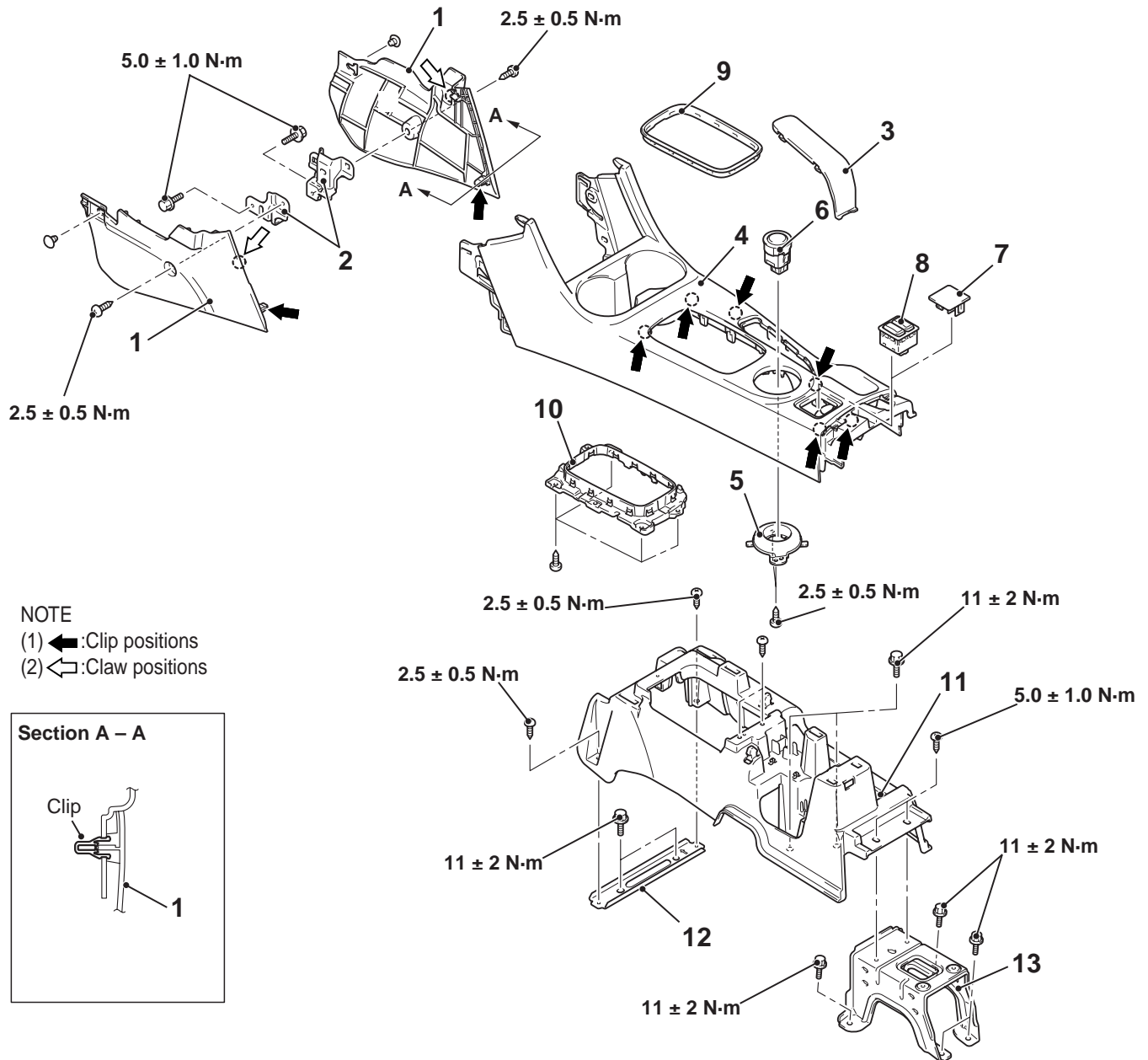
5. Interior temperature sensor (Refer to GROUP 55 – Interior temperature sensor .)
6. Aspirator hose
7. Instrument panel

# FLOOR CONSOLE ASSEMBLY

## FRONT FLOOR CONSOLE ASSEMBLY

### REMOVAL AND INSTALLATION

M1521005200885



ACB05038AB

#### Removal steps

- Centre lower panel assembly (Refer to ).
- 1. Floor console side cover
- 2. Floor console bracket front
- Rear floor console assembly (Refer to ).

#### Removal steps (Continued)

- Selector lever knob (Refer to GROUP 23A – Transmission Control )
- 3. Floor console parking brake lever cover
- 4WD switch connector connection

**Removal steps (Continued)**

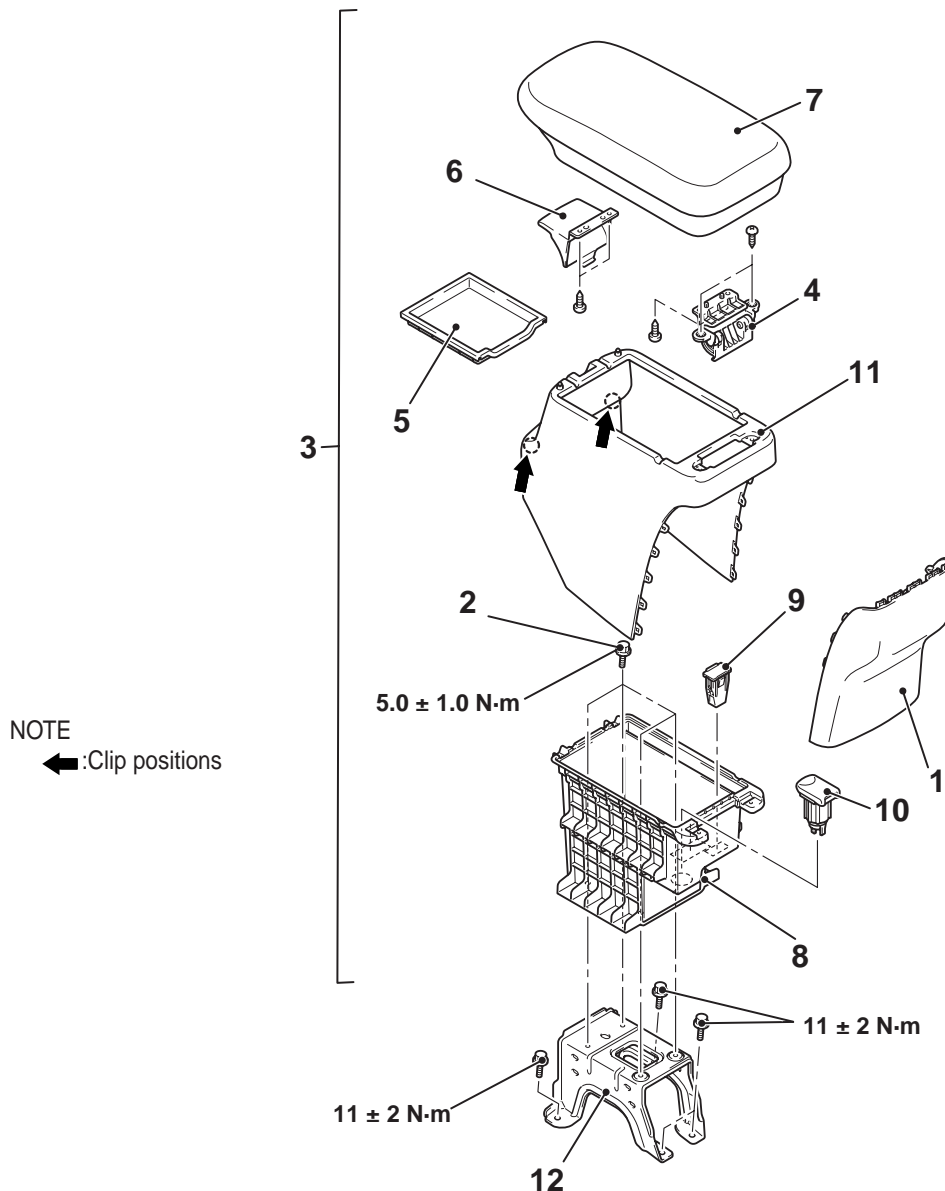
- Heated switch connector connection <Vehicles with heated seat>
- 4. Shift lever panel assembly
- 5. Bezel
- 6. 4WD switch or S-AWC switch
- 7. Plug
- 8. Heated switch <Vehicles with heated seat>
- 9. Ring
- 10. Boot assembly

**Removal steps (Continued)**

- Inside transmission antenna (front) (Refer to GROUP 42B – Outside Transmission Antenna, Inside Transmission Antenna Assembly, Receiver Antenna Module ).
- 11. Floor console front
- 12. Floor console trim plate bracket
- 13. Floor console bracket centre

**REAR FLOOR CONSOLE ASSEMBLY****REMOVAL AND INSTALLATION**

M1521005700664





### Disassembly steps

1. Floor rear console accessory panel
  - Accessory socket connector connection
  - USB adapter connector connection
2. Rear floor console assembly mounting bolt
3. Rear floor console assembly
4. Floor console lid lock lever
5. Armrest tray

### Disassembly steps (Continued)

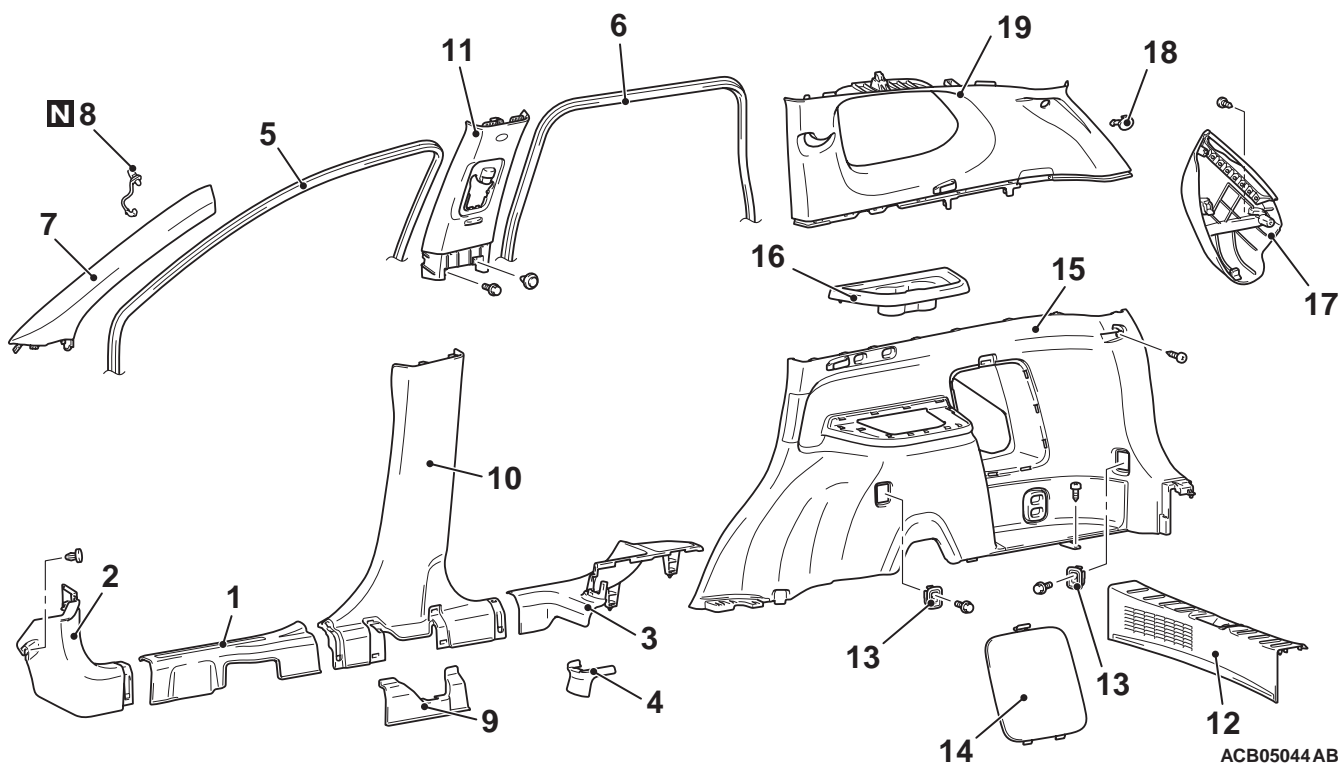
6. Floor console lid lock lever
7. Floor console lid
8. Floor console box inner
9. USB adapter (Refer to GROUP 54A – USB Adapter Removal and Installation )
10. Accessory socket
11. Rear console
12. Floor console bracket rear

## TRIMS

### INTERIOR TRIM

### REMOVAL AND INSTALLATION

M1521001102268

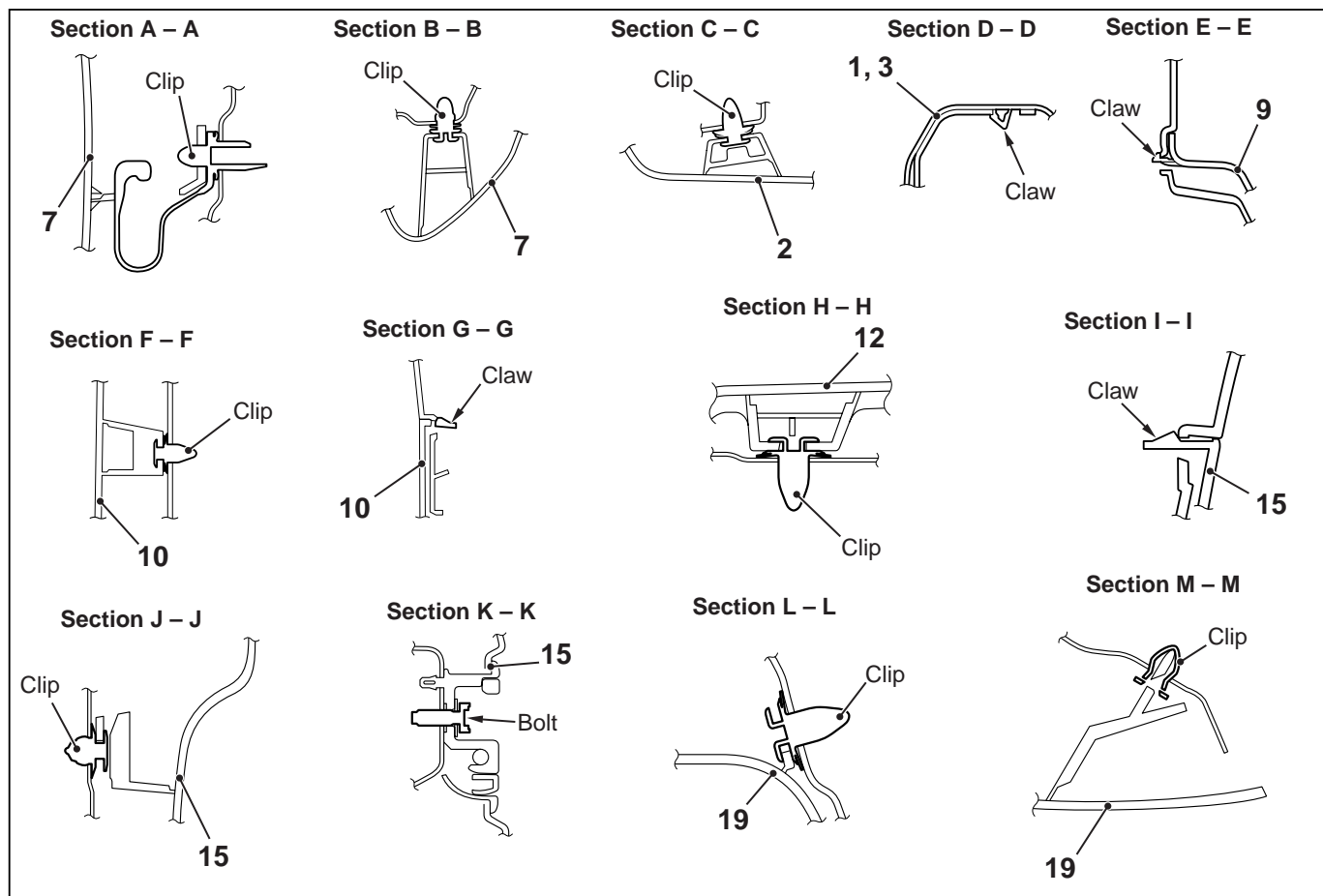
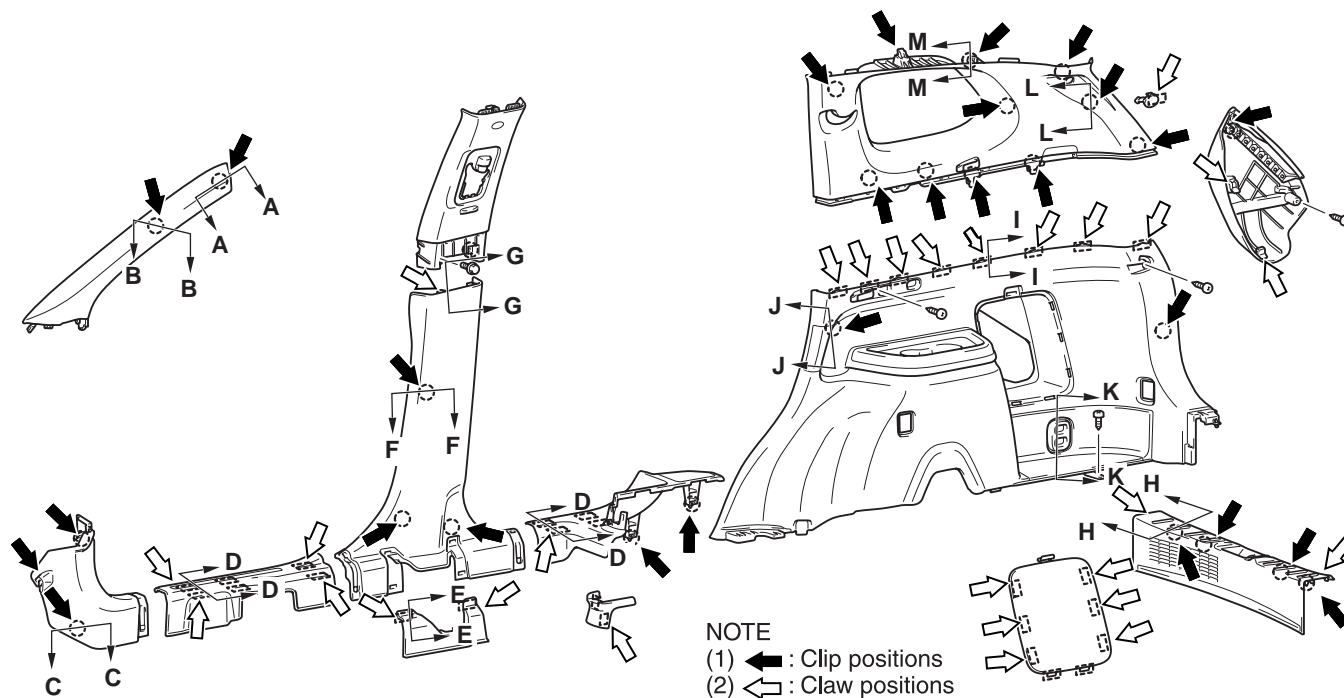


1. Front scuff plate
2. Cowl side trim
3. Rear scuff plate
4. Rear scuff plate front
5. Front door opening trim
6. Rear door opening trim
7. Front pillar trim
8. Garnish clip <Vehicles with curtain air bag>
9. Centre pillar trim lower cover
  - Seat belt pre-tensioner connector connection

10. Centre pillar trim, lower
11. Centre pillar trim, upper
12. Rear end trim
- Quarter trim lower and quarter trim upper removal steps**
13. Cargo hook assembly
14. Jack lid assembly
15. Quarter trim lower
16. Quarter trim tray
17. Quarter trim cover
18. Quarter trim upper cap
19. Quarter trim upper

**NOTE:** For the vehicles with curtain air bag, install the front pillar trim and quarter trim upper provided for curtain air bag.

## CLIP AND CLAW POSITIONS



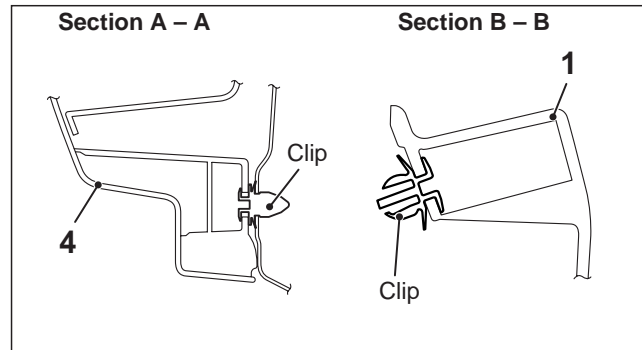
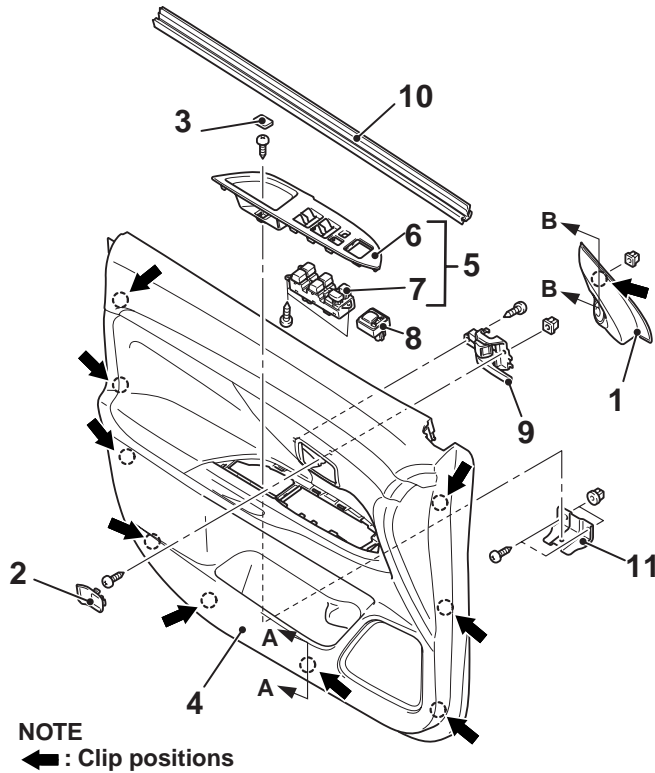
ACB05998AB

**NOTE:** Each number in the illustration indicates a part number.

## DOOR TRIM

### REMOVAL AND INSTALLATION

M1521006401528



ACB05047 AB

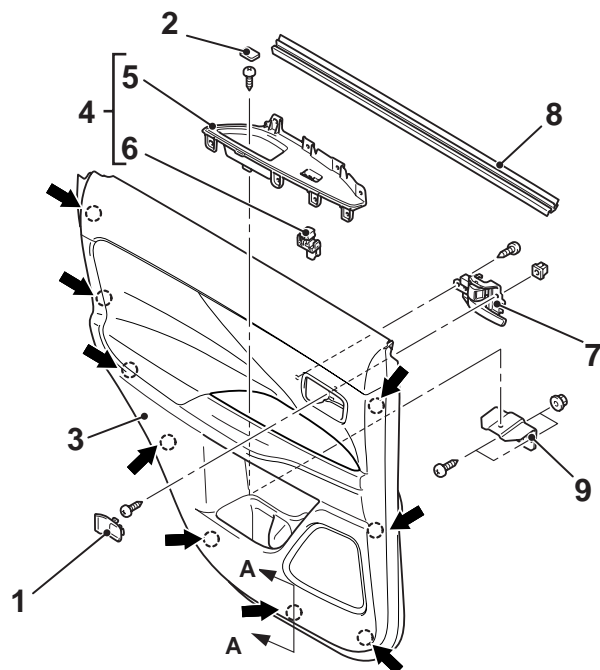
#### Front door trim removal steps

- Tweeter connector
  - 1. Front door sash trim
  - 2. Inside handle cover cap
  - 3. Door trim cap
  - 4. Front door trim
  - 5. Power window switch assembly
  - 6. Power window switch panel
- <<A>>  
<<B>>  
<<C>> >>A<<

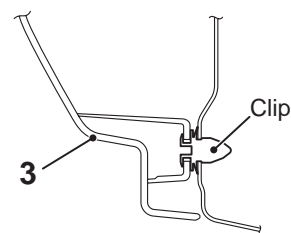
#### Front door trim removal steps

- Power window switch connector
- 7. Power window switch
- 8. Remote-controlled mirror switch
- 9. Inside handle cover
- 10. Door beltline weatherstrip inner
- 11. Front door pull handle bracket

## &lt;Rear door trim&gt;



Section A – A

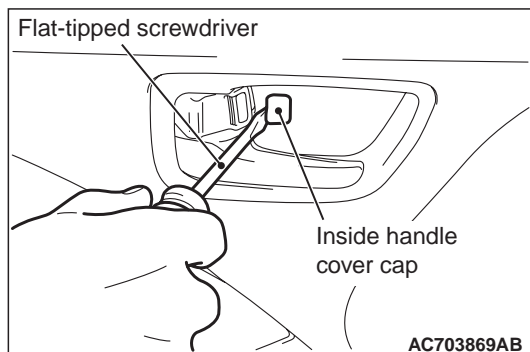


## NOTE

← : Clip positions

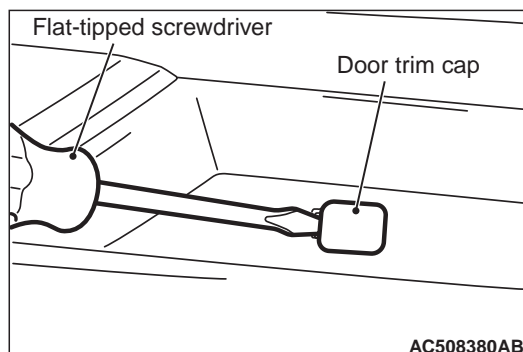
- Rear door trim removal steps**
- <<A>> 1. Inside handle cover cap
  - <<B>> 2. Door trim cap
  - <<C>> >>A<< 3. Rear door trim
  - 4. Power window switch assembly
  - 5. Power window switch panel
  - 6. Power window switch
  - 7. Inside handle cover
  - 8. Door beltline weatherstrip inner
  - 9. Rear door pull handle bracket

## REMOVAL SERVICE POINTS

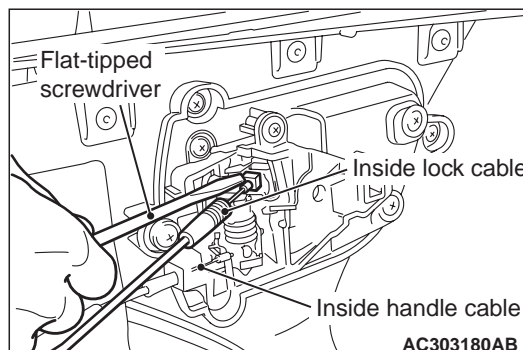
<<A>> INSIDE HANDLE COVER CAP  
REMOVAL

Insert a flat-tipped screwdriver as shown in the figure to remove the inside handle cover cap.

## &lt;&lt;B&gt;&gt; DOOR TRIM CAP



Insert a flat-tipped screwdriver as shown in the figure to remove the door trim cap.

<<C>> FRONT/REAR DOOR TRIM  
REMOVAL

Using a flat-tipped screwdriver as shown in the figure, remove the inside lock cable and the inside handle cable, then remove the door trim.

ACB05048AB

AC508380AB

AC703869AB

AC303180AB

**INSTALLATION SERVICE POINTS**

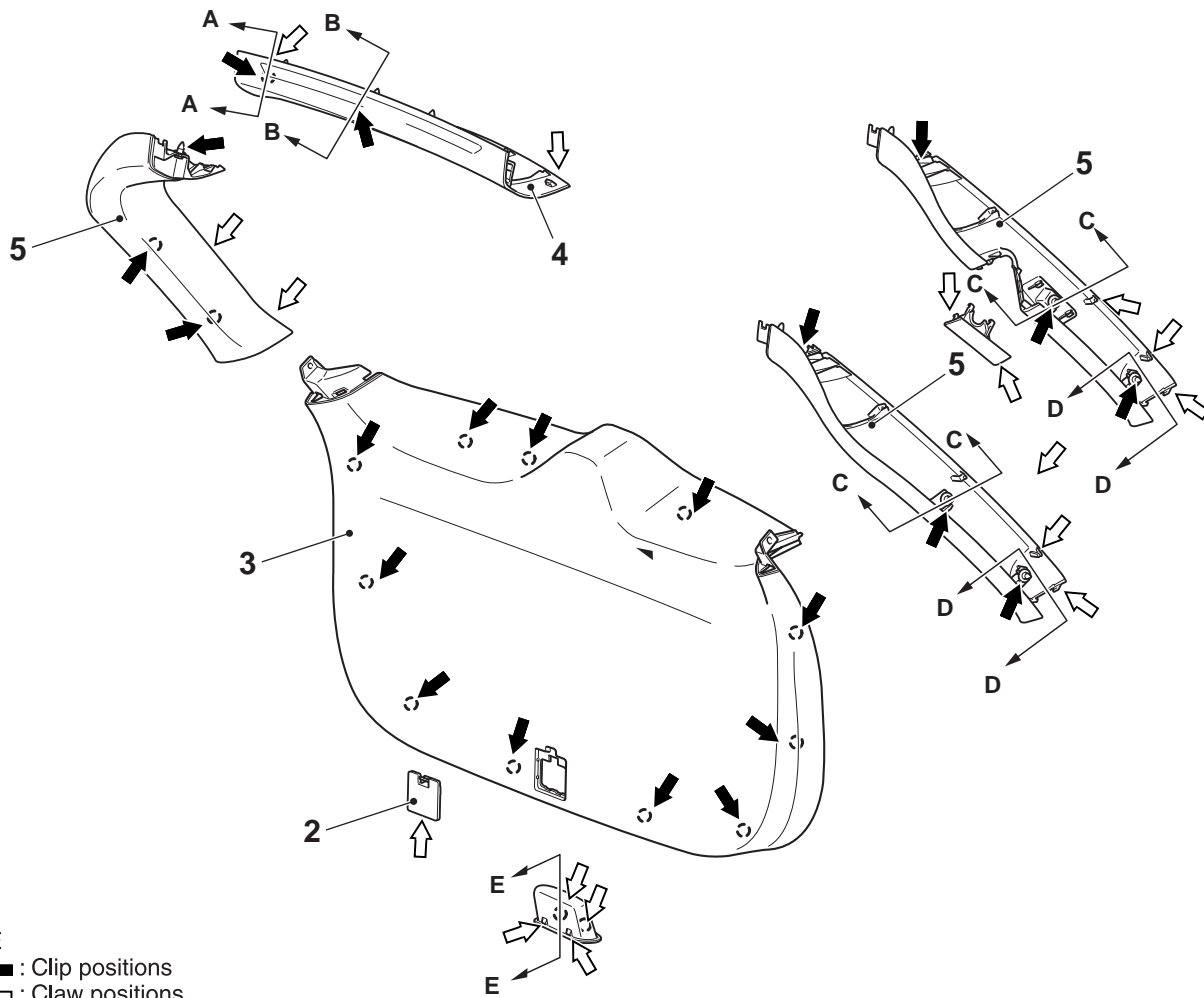
**>>A<< FRONT DOOR/REAR DOOR TRIM  
INSTALLATION**

After the power window switch is installed or replaced, perform learning of the power window fully-closed position (Refer to GROUP 42A – Door Glass and Regulator ).

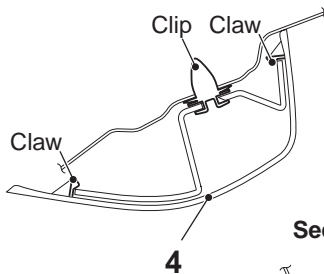
## TAILGATE TRIM

## REMOVAL AND INSTALLATION

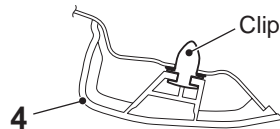
M1521006500577



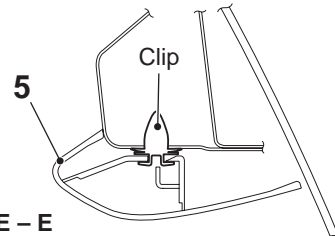
Section A – A



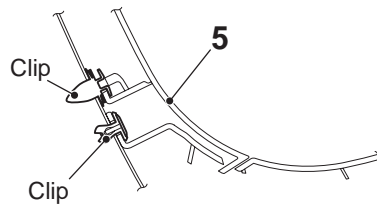
Section B – B



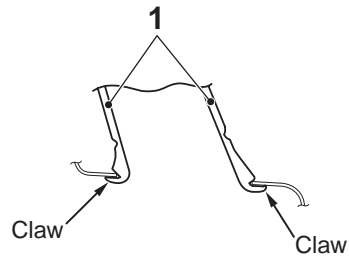
Section C – C



Section D – D



Section E – E



**Removal steps**

1. Tailgate pull handle
2. Tailgate trim cap
3. Tailgate trim

**Removal steps (Continued)**

4. Tailgate upper trim
5. Tailgate opening side trim

# HEADLINING

## REMOVAL AND INSTALLATION

M1521001402032

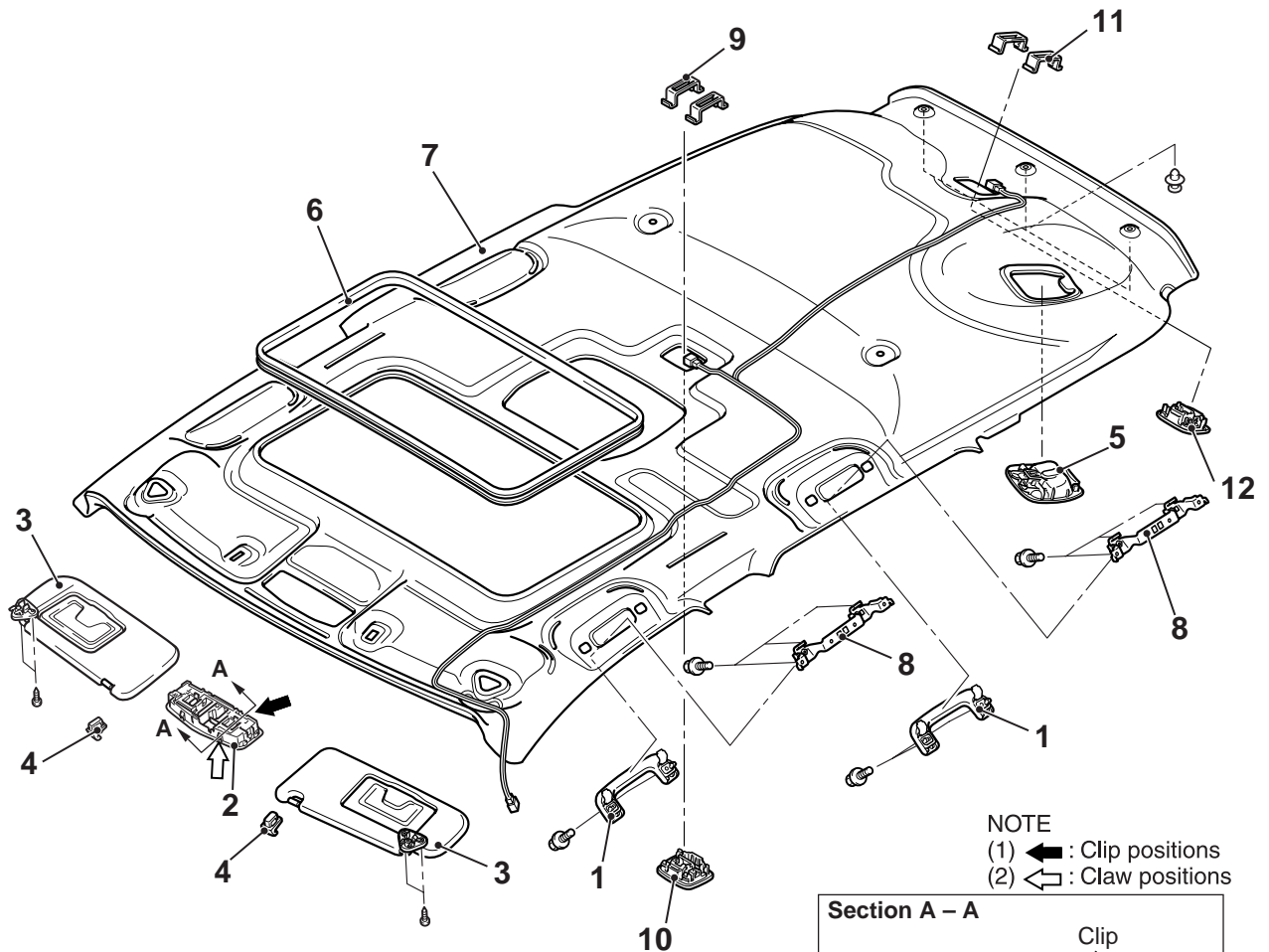
**⚠ CAUTION**

For the removal of the headlining, refer to **GROUP 52B – Service Precautions (Refer to )** and **Curtain Air Bag Module (Refer to )**.

**Pre-removal and Post-installation Operation**

- Removal and Installation of Front Pillar Trim, Rear scuff plate, Front scuff plate, Cowl side Trim, Upper centre Pillar Trim, Lower centre Pillar Trim, Front door opening Trim, Rear door opening Trim, Quarter trim Lower, Quarter trim Upper, Rear end Trim, Rear Pillar Trim (Refer to ).
- Removal and Installation of Rear Seatbelt Outer Assembly (RH or LH) (Refer to ).
- Removal and Installation of Front door Assembly (RH) (Refer to GROUP 42A-door Assembly ).
- Removal and Installation of Instrument panel assembly (Refer to ).
- Removal and Installation of Front Seat Assembly (Refer to ).
- Removal and Installation of Parking brake lever assembly (Refer to GROUP 37-Parking brake assembly ).
- Removal and Installation of Centre flame assembly (Refer to GROUP 55A-Heater unit and blower assembly ).





ACB05041AB

### Removal steps

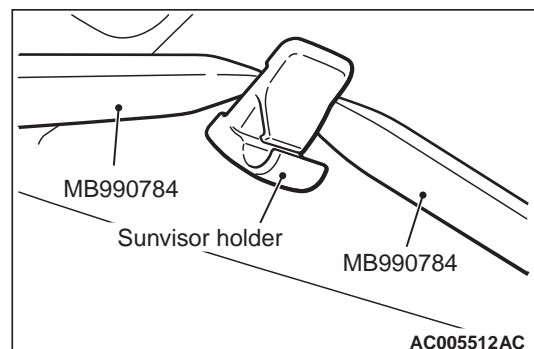
1. Assist grip
  - Front room lamp connector
  - Sunroof switch connector <Vehicles with sunroof>
2. Front room lamp assembly
3. Sunvisor
4. Sunvisor holder
5. Rear Seatbelt Outer cover
6. Sunroof lid inner weather strip rear <Vehicles with sunroof>
7. Headlining
8. Assist grip bracket
9. Rear room lamp bracket
10. Rear room lamp assembly
11. Cargo room lamp bracket
12. Cargo room lamp assembly

<<A>>

<<B>>

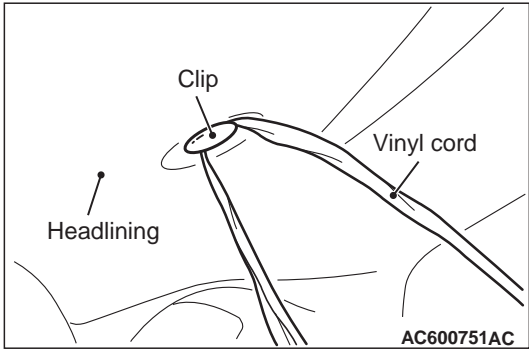
### REMOVAL SERVICE POINTS

#### <<A>> SUNVISOR HOLDER REMOVAL

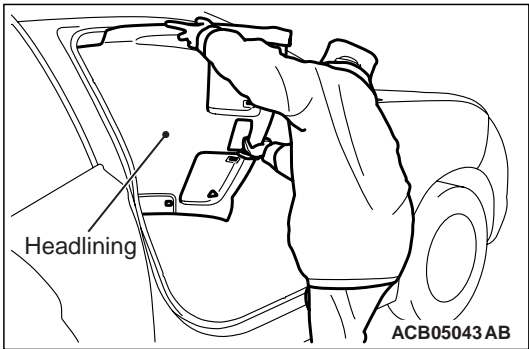


Insert the special tools ornament remover (MB990784) into the sunvisor holder from its left and right sides to disengage the claws on the sunvisor holder sides.

<<B>> HEADLINING ASSEMBLY  
REMOVAL



1. To remove the clip, insert a vinyl cord into a clearance between the clip and the headlining, and pass it around the clip. Then, pull out the clip downwards while pulling the vinyl cord.



2. Take out the headlining assembly through the front passenger's door opening.

INSIDE REAR VIEW MIRROR

ADHESIVE

M1521000500193

Application	Brand name
Inside rear view mirror	Inside rear view mirror adhesive kit MU-150Kit [MZ100425]

NOTE: The symbol in parentheses indicates a part number.

Disengage the claw A and lower the cover toward arrow 1 direction.

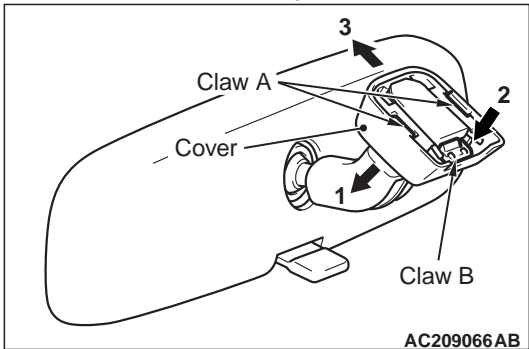
REMOVAL AND INSTALLATION

M1521002600839

2. Push the claw B toward arrow 2 direction to unlock, and pull out the mirror toward arrow 3 direction.

REMOVAL SERVICE POINT

<<A>> INSIDE REAR VIEW MIRROR  
REMOVAL



# SEAT ASSEMBLY

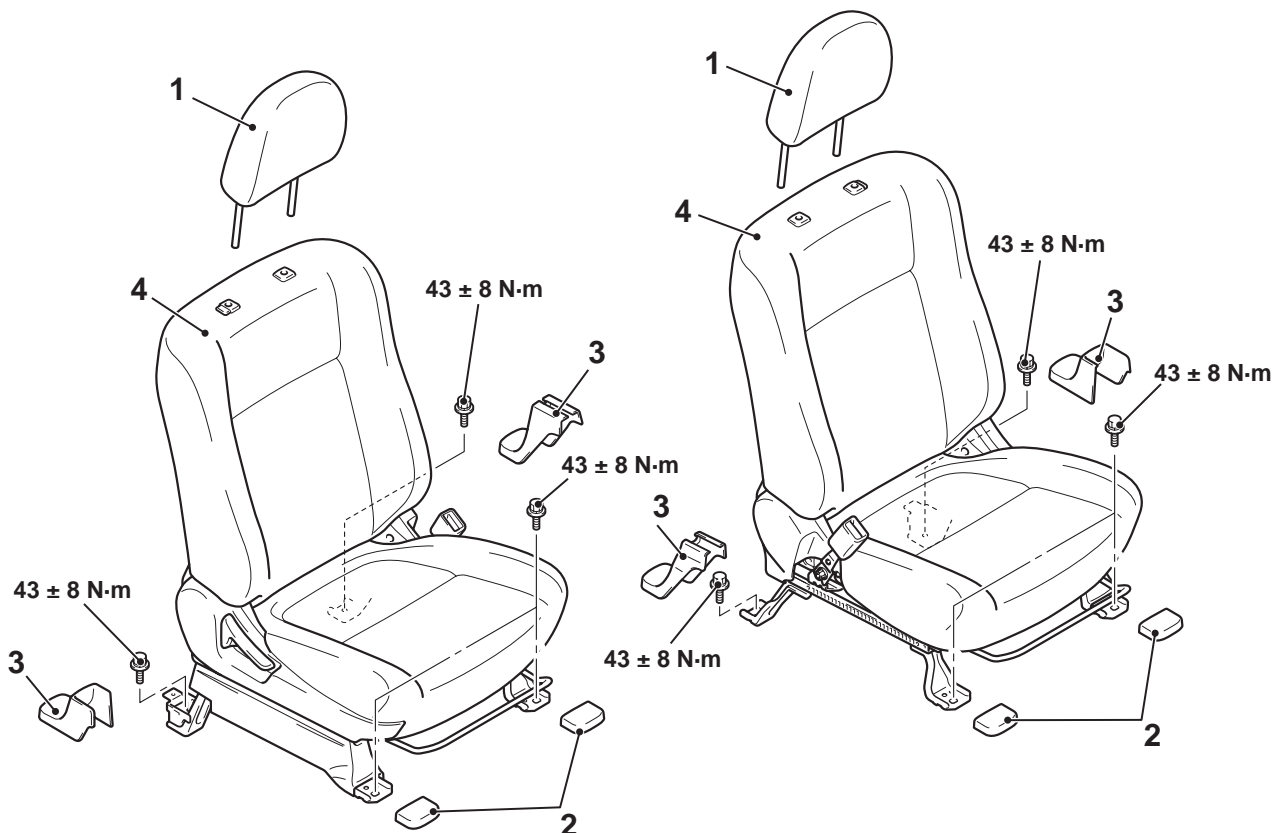
## FRONT SEAT ASSEMBLY

### REMOVAL AND INSTALLATION

M1522001302180

#### CAUTION

Before removing the front seat assembly, refer to GROUP 52B, Service Precautions and Side Airbag Module (s) .



ACB05055AB

#### Removal steps

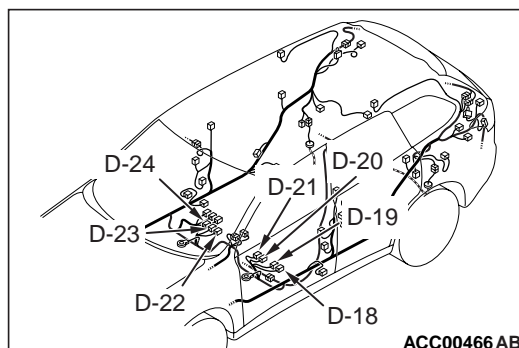
1. Headrest
2. Front seat anchor cover
3. Rear seat anchor cover
- Wiring harness connectors connection
4. Front seat assembly

<<A>>

>>A<<

#### REMOVAL SERVICE POINT

#### <<A>> WIRING HARNESS CONNECTOR DISCONNECTION

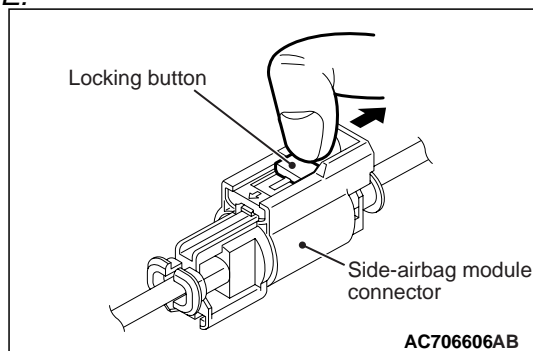


ACC00466AB

Disconnect the following wiring harness connectors:

Connector number	Connector name
D-18 (2)	Power seat connector <Vehicle with power seat>
D-19 (4 – black)	Heated seat connector (LH) <Vehicle with heated seat>
D-20 (2 – black)	Seat belt switch connector (Driver's side)
D-21 (2 – yellow)	Side air bag module (squib) connector (LH) <Vehicles with side-airbag>
D-22 (2 – yellow)	Side air bag module (squib) connector (RH) <Vehicles with side-airbag>
D-23 (2 – natural)	Seat belt switch connector (Passenger's side)
D-24 (4 – black)	Heated seat connector (RH) <Vehicle with heated seat>

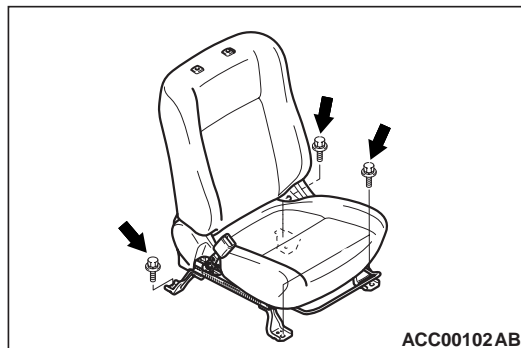
NOTE:



When disconnecting the side air bag module connectors of D-21 and D-22, unlock the connector by sliding the locking button to the direction of the arrow as shown in the figure, and then disconnect the connector.

## INSTALLATION SERVICE POINT

### >>A<< FRONT SEAT ASSEMBLY INSTALLATION

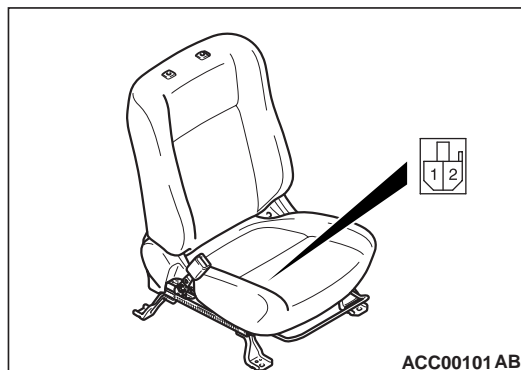


1. Confirm that both the seat slides are locked, and then temporarily tighten all the bolts shown in the figure so that no load is applied to the front seat cushion.
2. Tighten all the bolts to the specified torque.

**Tightening torque:  $43 \pm 8$  N·m**

## INSPECTION

M1522001400619

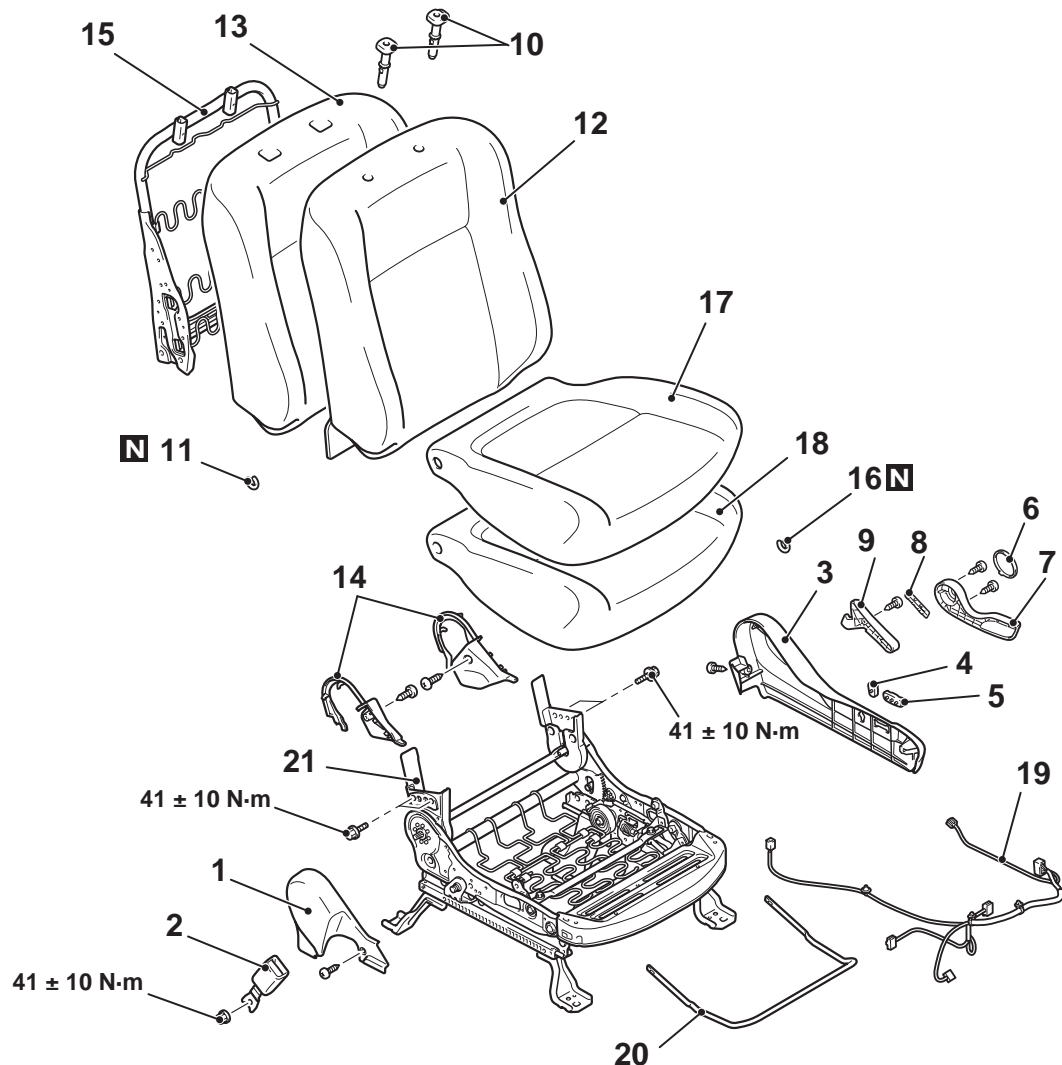


Connect the + terminal of the battery to the power seat connector terminal No.2 and the – terminal to terminal No.1, and check that the power seat works normally.

# DISASSEMBLY AND REASSEMBLY

M1522001502184

## <DRIVER'S SEAT>



ACB05056 AB

### Disassembly steps

1. Hinge cover
2. Seat belt inner
3. Side shield cover
4. Reclining adjuster lever knob  
<Vehicles with power seat>
5. Slide adjuster lever knob  
<Vehicles with power seat>
6. Height adjuster lever cap  
<Vehicles without power seat>
7. Height adjuster lever <Vehicles  
without power seat>
8. Reclining adjuster lever cap  
<Vehicles without power seat>
9. Reclining adjuster lever <Vehicles  
without power seat>

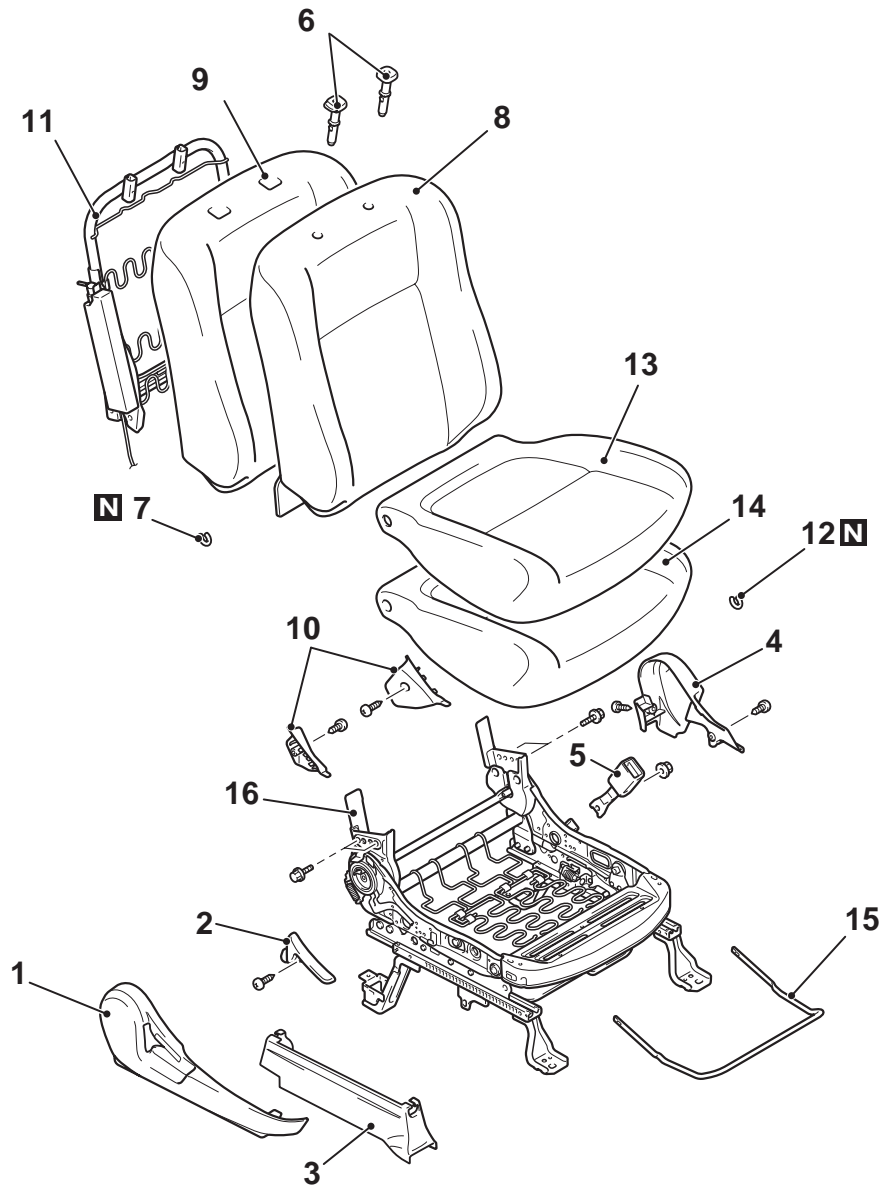
<<A>>

<<B>>

### Disassembly steps (Continued)

10. Headrest guide
11. Hog ring
12. Seatback cover
13. Seatback pad
14. Hinge cover inner
15. Seatback frame assembly
16. Hog ring
17. Seat cushion cover
18. Seat cushion pad
19. Harness clamp <Vehicles with  
power seat>
20. Slide adjuster lever knob  
<Vehicles without power seat>
21. Seat cushion frame assembly

## &lt;PASSENGER'S SEAT&gt;

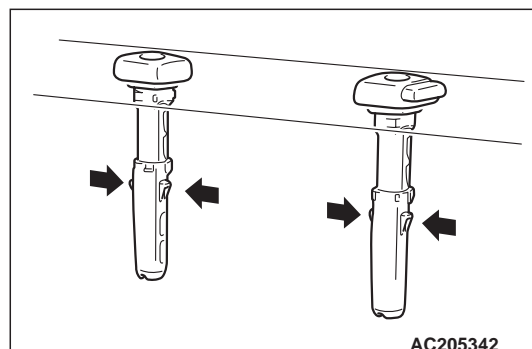


ACB05990AB

**Disassembly steps**

1. Side shield cover
2. Reclining adjuster lever
3. Slide adjuster side cover
4. Hinge cover
5. Seat belt inner
6. Headrest guide
7. Hog ring
8. Seatback cover
9. Seatback pad
10. Hinge cover inner
11. Seatback frame assembly
12. Hog ring
13. Seat cushion cover
14. Seat cushion pad
15. Seat slide adjuster lever
16. Seat cushion frame assembly

&lt;&lt;A&gt;&gt;

**DISASSEMBLY SERVICE POINTS****<<A>> HEADRESTRAINT GUIDE  
REMOVAL**

AC205342

&lt;&lt;B&gt;&gt;

Remove the headrest guides while pushing the on both sides inward.

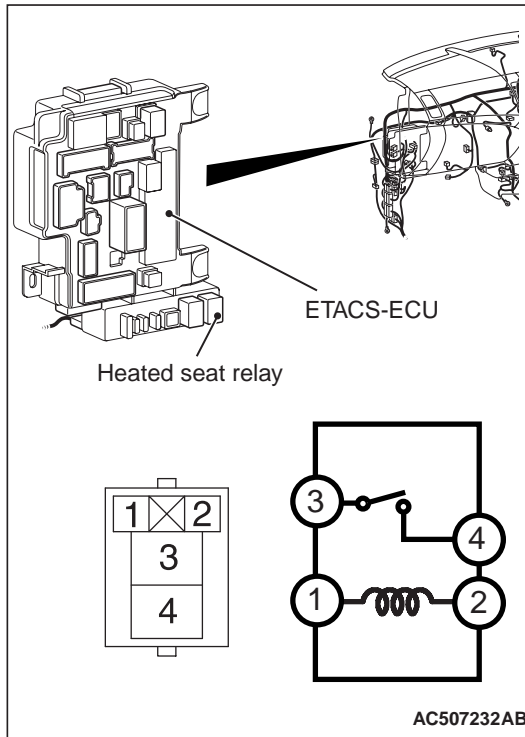
## <<B>> SEAT BACK FRAME ASSEMBLY REMOVAL

For the vehicles with side-airbag, do not remove the side-airbag module from the frame.

## INSPECTION

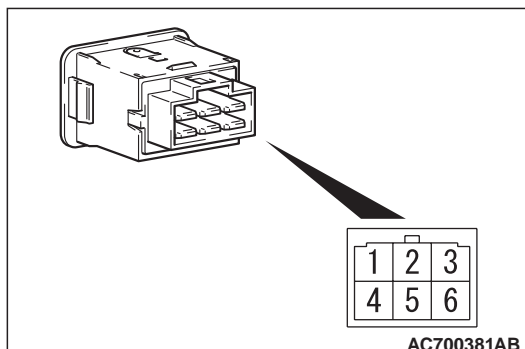
### Inspection of the heated seat relay for continuity

M1522001600475



Battery voltage	Terminal number	Normal value
At no energisation	3 – 4	No continuity
At energisation [terminal 2 (+) – terminal 1 (–)]		Continuity exists (2 Ω or less).

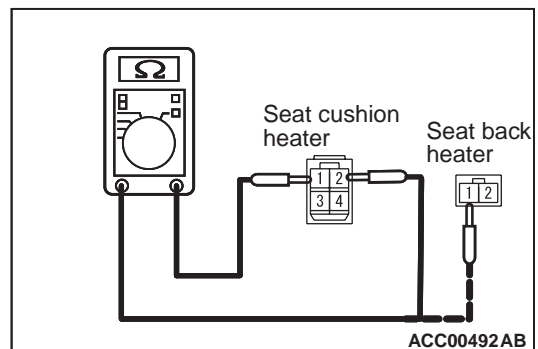
### INSPECTION OF THE HEATED SEAT SWITCH FOR CONTINUITY



Inspect the heated seat switch for continuity.

Switch position	Terminal number	Normal value	Note
HI	terminal 2 – terminal 1	Continuity exists (2 Ω or less).	
	terminal 2 (+) – terminal 6 (–)		Indicator
	terminal 3 (+) – terminal 4 (–)		Illumination
OFF	terminal 3 (+) – terminal 4 (–)		Illumination
LOW	terminal 2 – terminal 5	Continuity exists (2 Ω or less).	
	terminal 2 (+) – terminal 6 (–)		Indicator
	terminal 3 (+) – terminal 4 (–)		Illumination

## SEAT CUSHION HEATER INSPECTION



Measure the resistance between the terminals.

**Standard value (interior temperature: 20 °C):**

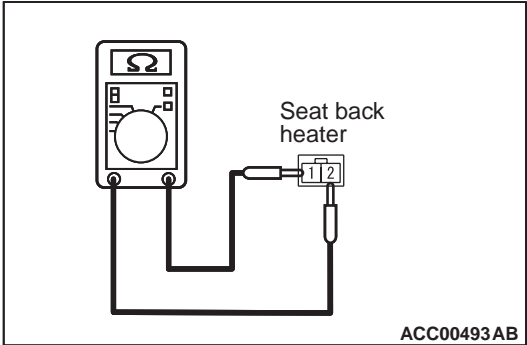
Terminal number	Standard value
Seat cushion heater (terminal No.1) – Seat cushion heater (terminal No.2)	4.32 to 5.28 Ω

Terminal number	Standard value
Seat cushion heater (terminal No.1) – Seatback heater (terminal No.1)	4.61 to 5.63 Ω

Measure the resistance between the terminals.  
**Standard value (interior temperature: 20 °C):**

Terminal number	Standard value
Seatback heater (terminal No.1) – Seatback heater (terminal No.2)	4.90 to 5.98 Ω

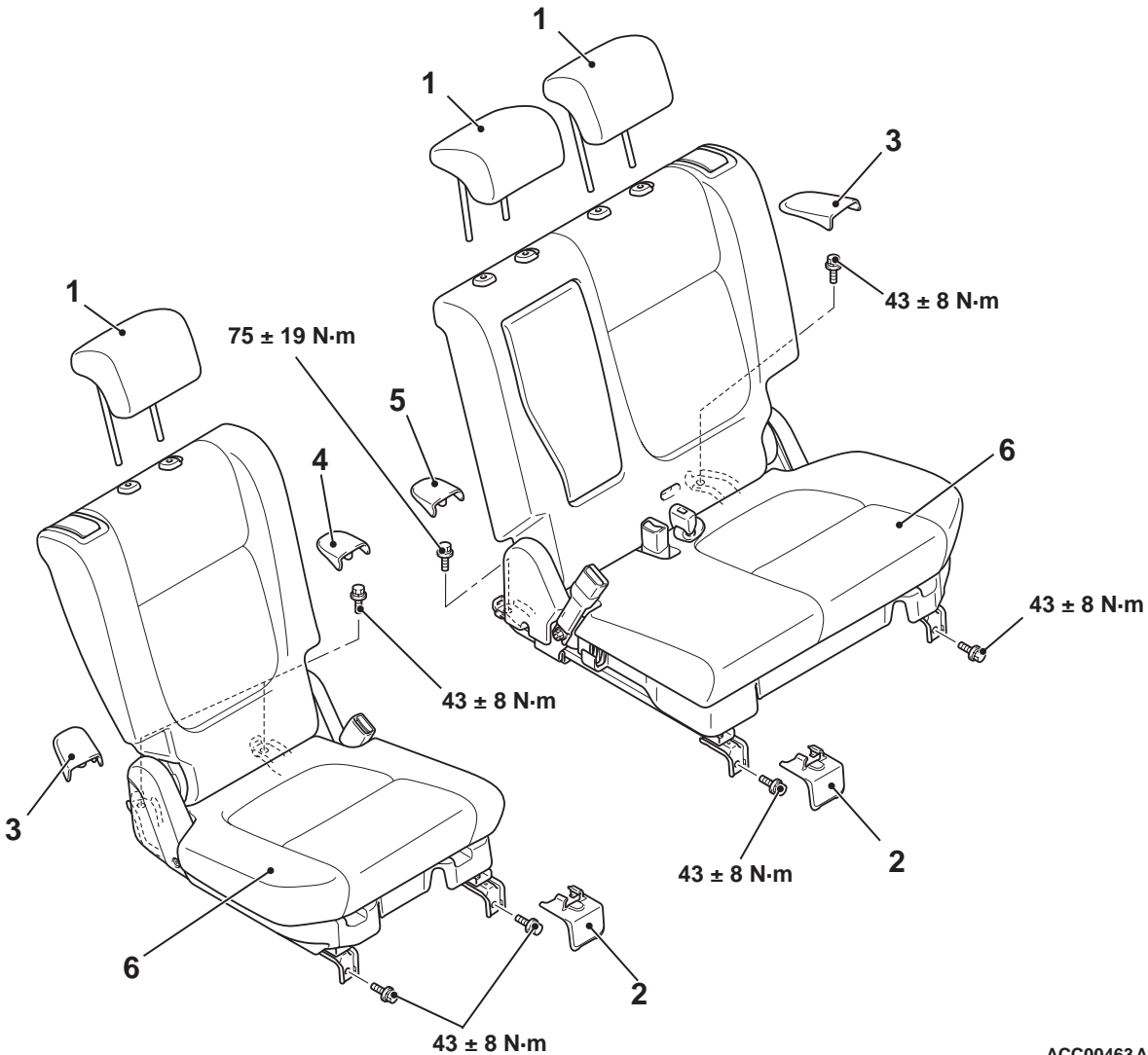
SEAT BACK HEATER INSPECTION



SECOND SEAT ASSEMBLY

REMOVAL AND INSTALLATION

M1522002300392



1. Headrestraint

Removal steps

- Rear scuff plate front (Refer to ).
- Rear scuff plate (Refer to ).



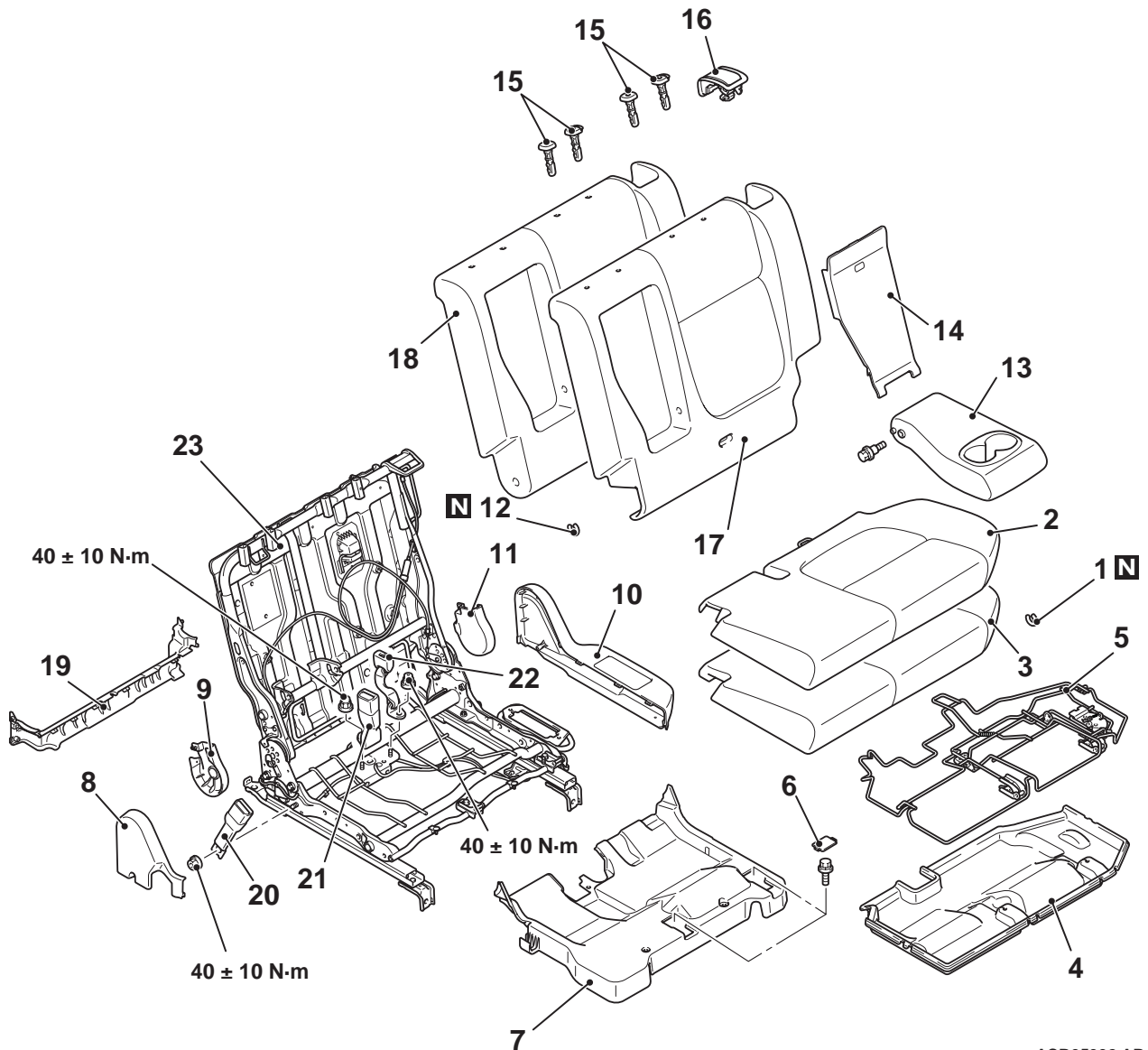
Removal steps (Continued)

2. Front anchor cover inner
3. Rear anchor cover outer
4. Rear anchor cover inner
5. Rear anchor cover inner
6. Second seat assembly

DISASSEMBLY AND REASSEMBLY

M1522002500493

<SECOND SEAT (LH)>



ACB05992 AB

Disassembly steps

1. Hog ring
2. Seat cushion pad cover
3. Seat cushion pad
4. Seat cushion bottom cover
5. Seat cushion frame assembly
6. Second seat latch cover
7. Seat cushion under cover
8. Reclining adjuster outer cover
9. Reclining adjuster inner cover
10. Reclining adjuster lever cover
11. Reclining adjuster inner cover
12. Hog ring

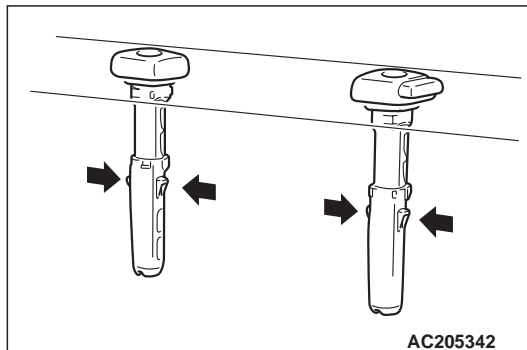
<<B>>

<<A>>

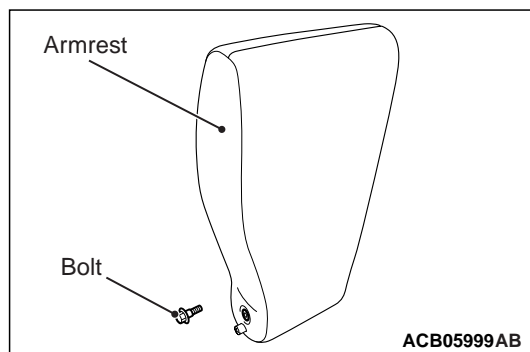
<<C>>

Disassembly steps

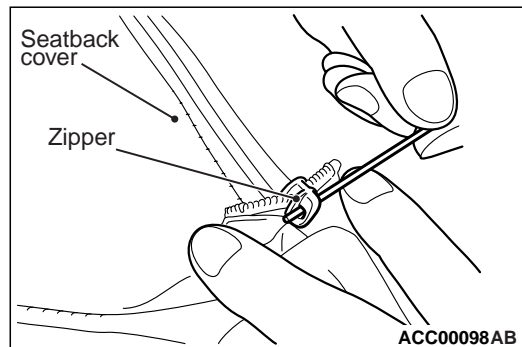
13. Armrest
14. Seatback armrest board
15. Headrest guide
16. Folding lever cover
17. Seatback cover
18. Seatback pad
19. Second seat rear cover
20. Centre seat belt inner
21. Seat belt inner
22. Centre seat belt inner (LH)
23. Seat frame assembly

**DISASSEMBLY SERVICE POINT**  
**<<A>> HEADRESTRAINT GUIDE**  
**REMOVAL**

Remove while pressing the claws on the both sides.

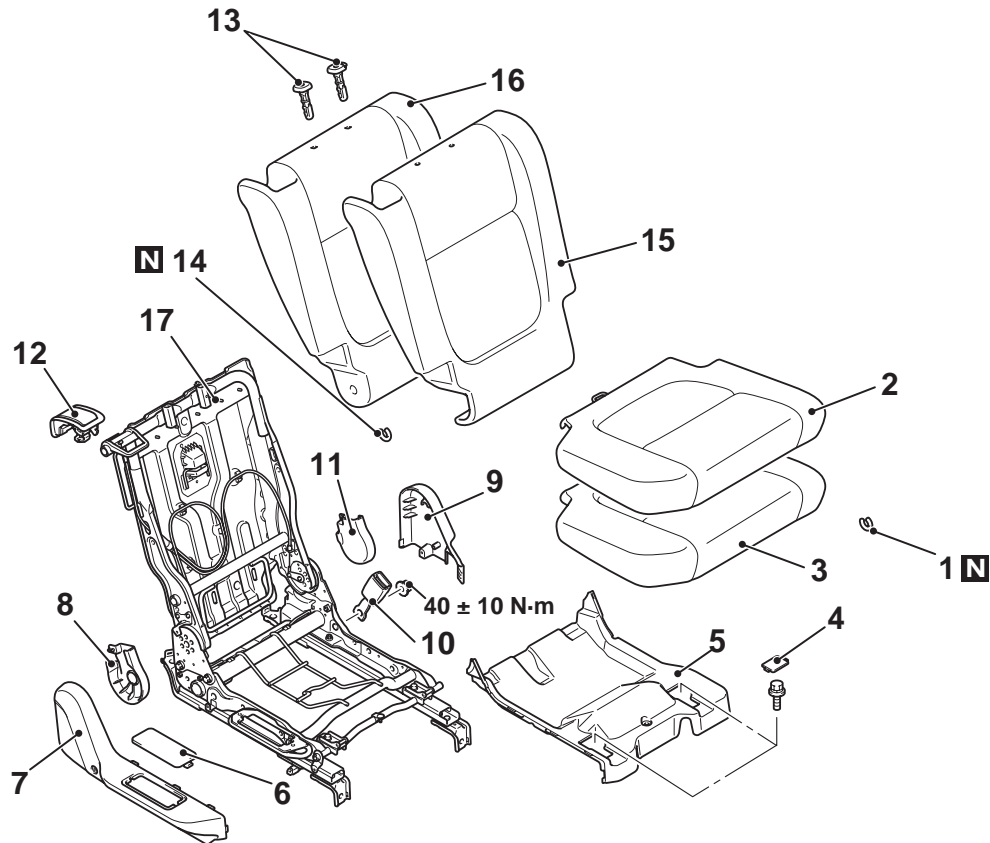
**<<B>> ARMREST REMOVAL**

Remove the bolts (right and left) to remove the armrest.

**<<C>> SEATBACK COVER REMOVAL**

To remove the seatback cover, unlock the zipper by inserting a wire through the slider to open it.

<SECOND SEAT (RH)>



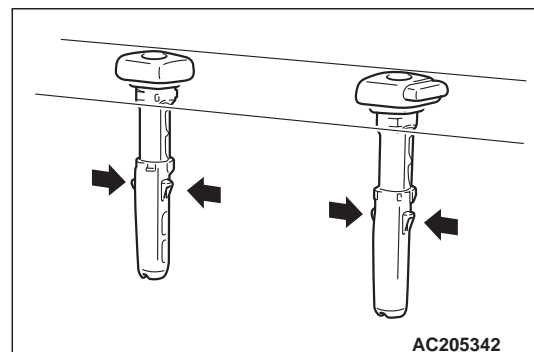
ACB05993AB

**Disassembly steps**

1. Hog ring
2. Cushion pad cover
3. Cushion pad
4. Second seat latch cover
5. Seat cushion under cover
6. Reclining adjuster lever cover
7. Reclining adjuster lever cover
8. Reclining adjuster inner cover
9. Reclining adjuster cover
10. Seat belt inner
11. Reclining adjuster inner cover
12. Folding lever cover
13. Headrest guide
14. Hog ring
15. Seatback cover
16. Seatback pad
17. Seat frame assembly

<<A>>

**DISASSEMBLY SERVICE POINT  
<<A>> HEADRESTRAINT GUIDE  
REMOVAL**



Remove while pressing the claws on the both sides.

SEAT BELT

FRONT SEAT BELT

REMOVAL AND INSTALLATION

M1523001301577

**CAUTION**

**SRS:** Before removing and installing the seat belts with pre-tensioner, refer to GROUP 52B – SRS Service Precautions and Seat Belt with Pre-tensioner .

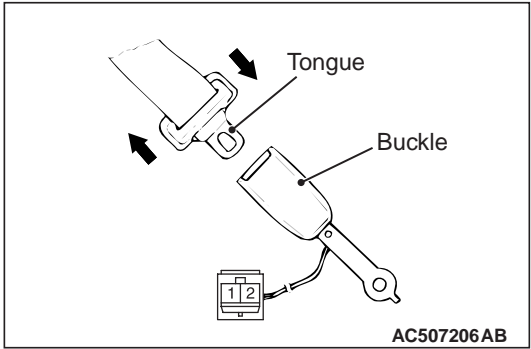
For removal and installation, refer to GROUP 52B, Seat belt with pre-tensioner .

If there is no continuity, replace the inner seat belt.

INSPECTION

M1523004400837

INSPECTION OF SEAT BELT SWITCH  
FOR CONTINUITY

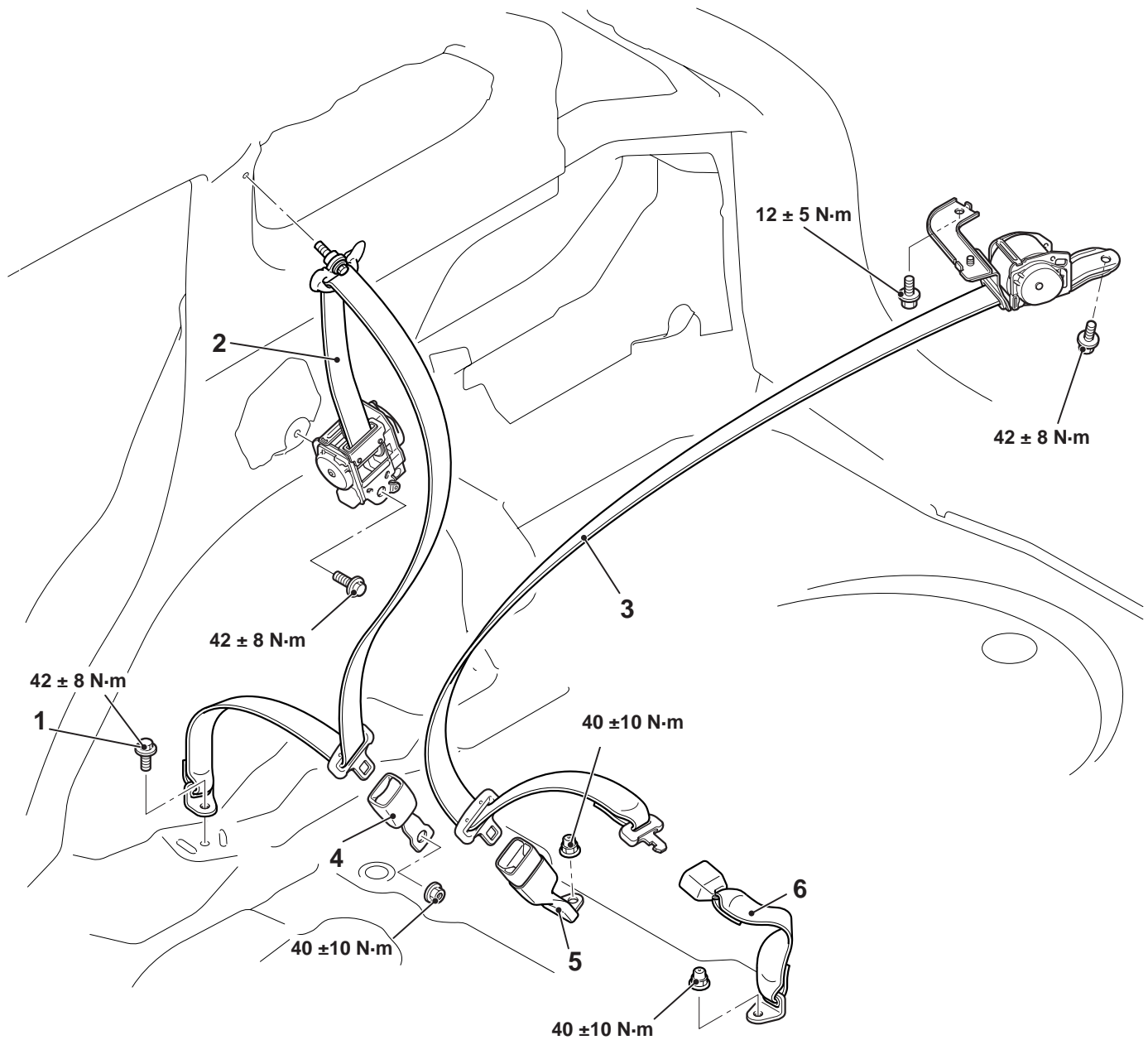


Item	Terminal number	Normal conditions
Seat belt is used	1 – 2	No continuity
Seat belt is not used		Continuity exists

## REAR SEAT BELT

### REMOVAL AND INSTALLATION

M1523001601329



ACB05995AB

#### Second seat belt removal steps

1. Seat belt side lower anchor bolt
- Rear scuff plate, rear scuff plate front, quarter trim lower, quarter trim upper (Refer to ).
2. Seat belt side
- Seat cushion assembly (LH)

#### Second seat belt removal steps

- Headlining (Refer to ).
- 3. Seat belt centre
- 4. Inner seat belt side
- 5. Inner seat belt centre
- Seat cushion assembly
- 6. Inner seat belt centre (LH side)