

GROUP 36

PARKING BRAKES

CONTENTS

SERVICE SPECIFICATIONS.....	36-2	36-3
ON-VEHICLE SERVICE.....	36-2	PARKING BRAKE LEVER.....	36-4
PARKING BRAKE LEVER STROKE CHECK AND ADJUSTMENT	36-2	REMOVAL AND INSTALLATION	36-4
PARKING BRAKE SWITCH CHECK	36-2	PARKING BRAKE CABLE.....	36-5
PARKING BRAKE LINING SEATING PROCEDURE		REMOVAL AND INSTALLATION	36-5

SERVICE SPECIFICATIONS

M1361000301385

Item	Standard value	Limit
Parking brake lever stroke (Control force approximately 200 N)	6 – 7 notches	–

ON-VEHICLE SERVICE

PARKING BRAKE LEVER STROKE
CHECK AND ADJUSTMENT

M1361000901224

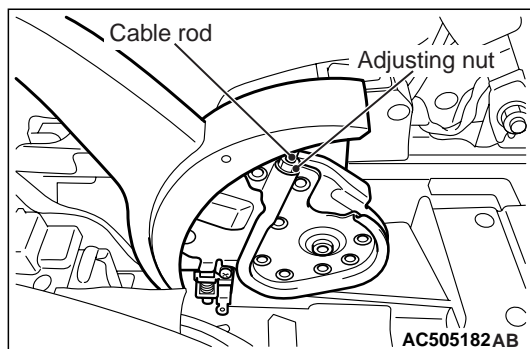
STROKE CHECK (CONTROL FORCE
APPROXIMATELY 200 N)

Standard value: 6 – 7 notches

STROKE ADJUSTMENT

If the parking brake lever stroke is out of the standard range, adjust as described below:

1. Remove the rear floor console front panel assembly (Refer to GROUP 52A – Rear Floor Console Assembly).



2. Loosen the adjusting nut to the end of the cable rod in order to allow slack in the cables.
3. Check that the parking brake lever on the caliper side is touching the parking brake lever bracket.

NOTE: If the parking brake lever is not touching the parking brake lever bracket, the parking brake cable might be stuck or routed incorrectly, or there might be a problem with the automatic adjustment mechanism inside the rear brake calipers. Therefore, it is necessary to check the parking brake cable and to disassemble and inspect the rear brake calipers.

4. Depress the brake pedal repeatedly until the brake pedal has no change in its stroke.

NOTE: Depressing the brake pedal repeatedly adjusts pad clearance correctly.

CAUTION

Be careful that the parking brake lever notch number should be within the standard range. If the notch number is too low, rear brake dragging can be caused.

5. Adjust the parking brake lever stroke to the standard value by turning the adjusting nut. After adjustment, check that there is no free play between the adjusting nut and the parking brake lever.
6. After the parking brake lever stroke is adjusted, raise the rear of the vehicle. Release the parking brake, and turn the rear wheels to confirm that the rear brakes are not dragging.

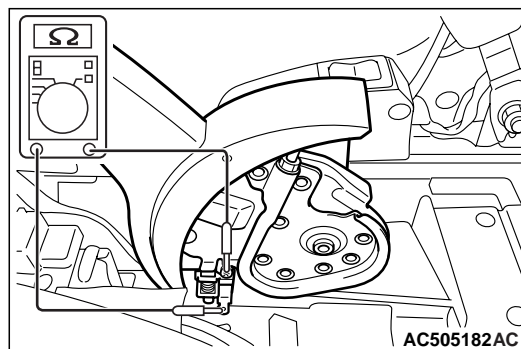
PARKING BRAKE SWITCH CHECK

M1361003301209

CAUTION

Do not apply grease or lubricant to the switch and the switch installation section to avoid malfunction of the switch. In addition, do not use gloves which have grease on them.

1. Remove the rear floor console assembly (Refer to GROUP 52A – Rear Floor Console).



2. Check the continuity between the parking brake switch terminal and the switch mounting bolt.

Check condition	Normal condition
When parking brake lever is pulled.	Continuity exists (2 Ω or less)
When parking brake lever is released.	No continuity

PARKING BRAKE LINING SEATING PROCEDURE

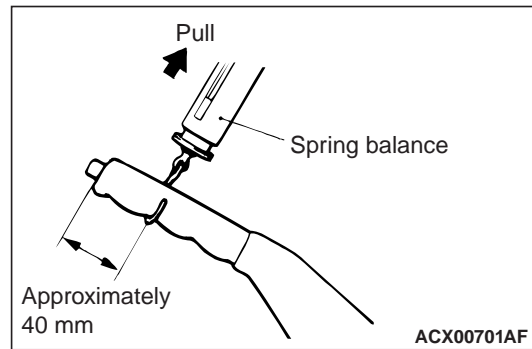
M1361005100059

CAUTION

Perform lining seating in a place with good visibility, and pay special attention to safety.

Perform lining seating by the following procedure when replacing the parking brake shoe assemblies or the rear brake discs, or when brake performance is insufficient.

1. Adjust the parking brake lever stroke to the standard value (Refer to [P.36-2](#)).



2. Hook a spring balance onto the centre of the parking brake lever grip and pull it with a force of 98 – 147 N in a direction perpendicular to the handle.
3. Drive the vehicle at a constant speed of 35 – 50 km/h for 100 meters.
4. Release the parking brake and let the brakes cool for five to ten minutes.
5. Repeat the procedure in steps 2. to 4. four to five times.

PARKING BRAKE LEVER

REMOVAL AND INSTALLATION

M1361001300921

CAUTION

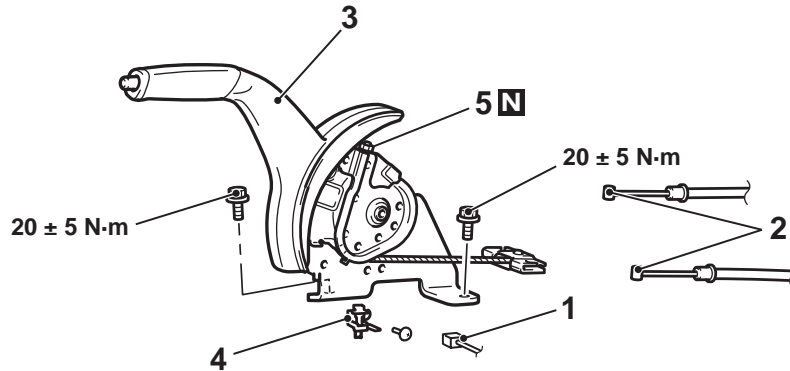
Do not apply grease or lubricant to the switch and the switch installation section to avoid malfunction of the switch. In addition, do not use gloves which have grease on them.

Pre-removal operation

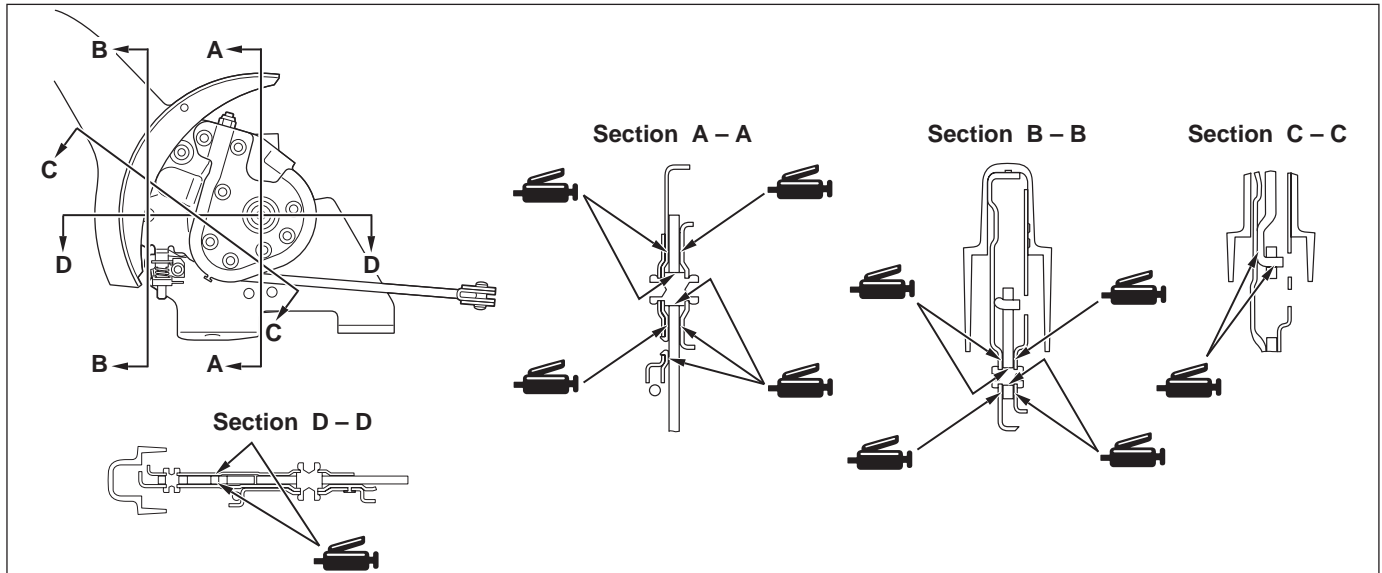
Rear Floor Console Assembly Removal (Refer to GROUP 52A – Rear Floor Console).

Post-installation operation

- Parking Brake Lever Stroke Check (Refer to [P.36-2](#)).
- Rear Floor Console Assembly Installation (Refer to GROUP 52A – Rear Floor Console).



AC704918AC

**Removal steps**

- Release the parking brake lever.
 - Loosen the adjusting nut.
1. Parking brake switch connector connection

Removal steps (Continued)

2. Parking brake rear cable assembly connection
3. Parking brake lever assembly
4. Parking brake switch
5. Adjusting nut

PARKING BRAKE CABLE

REMOVAL AND INSTALLATION

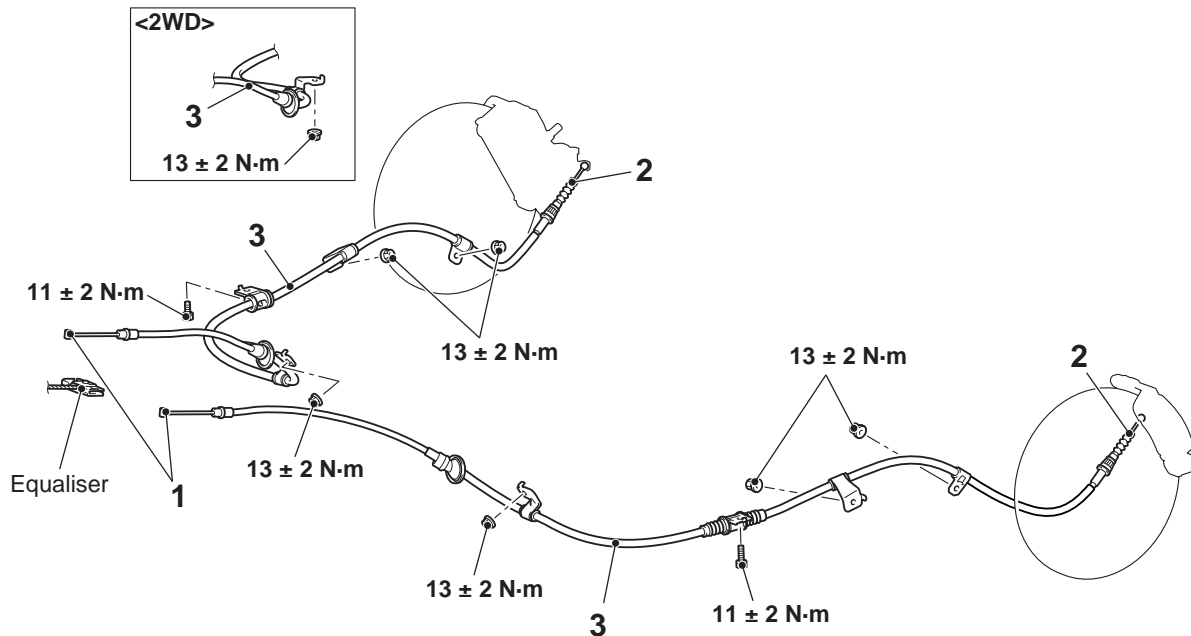
M1361001902026

Pre-removal operation

- Rear Floor Console Assembly Removal (Refer to GROUP 52A – Rear Floor Console Assembly).
- Second Seat Assembly Removal (Refer to GROUP 52A – Second Seat Assembly).
- Rear Floor Under Cover Removal (Refer to GROUP 51, Under Cover).

Post-installation operation

- Rear Floor Under Cover Removal (Refer to GROUP 51, Under Cover).
- Second Seat Assembly Installation (Refer to GROUP 52A – Second Seat Assembly).
- Rear Floor Console Assembly Installation (Refer to GROUP 52A – Rear Floor Console Assembly).
- Parking brake lining seating procedure (Refer to P.36-3).



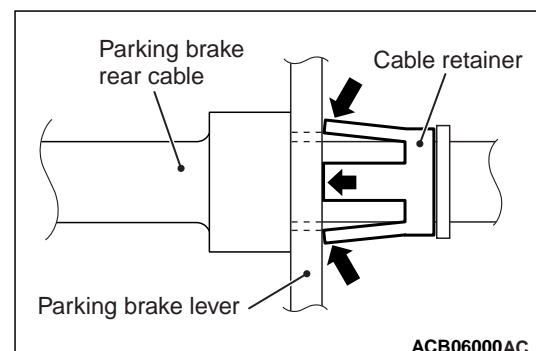
ACC00215AB

Removal steps

- Release the parking brake lever.
 - Loosen the adjusting nut.
- >>B<< 1. Parking brake rear cable connection (Parking brake lever side)
- Parking brake rear cable clamp connection.
- <<A>> >>A<< 2. Parking brake rear cable connection (Rear brake caliper assembly side)
3. Parking brake rear cable

REMOVAL SERVICE POINTS

<<A>> PARKING BRAKE REAR CABLE CONNECTION (REAR BRAKE CALIPER ASSEMBLY SIDE) REMOVAL

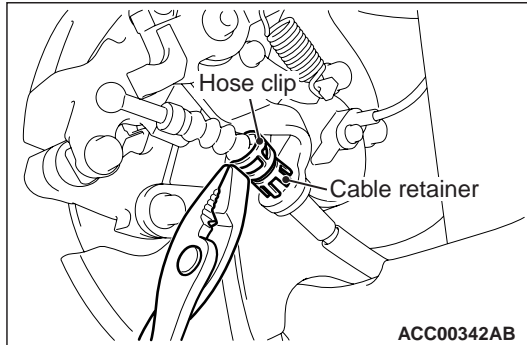


ACB06000AC

Compress the tabs on the cable retainer to pull out the parking rear cable through the parking lever hole of the rear brake caliper assembly.

NOTE:

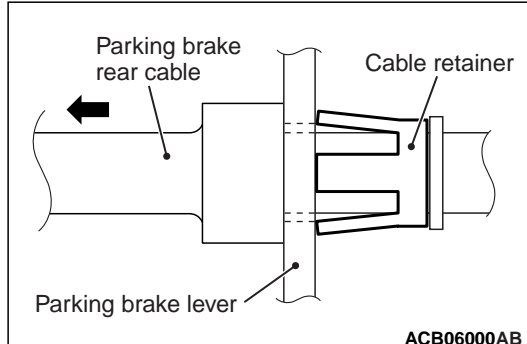
- When pulling out the parking rear cable, be careful not to damage the tab on the cable retainer.



Example: Insert the 12.8-mm hose clip (MB248923) into the parking rear cable. Then push the clip over the cable retainer to protect the tabs.

INSTALLATION SERVICE POINT**>>A<< PARKING BRAKE REAR CABLE CONNECTION (REAR BRAKE CALIPER ASSEMBLY SIDE) INSTALLATION**

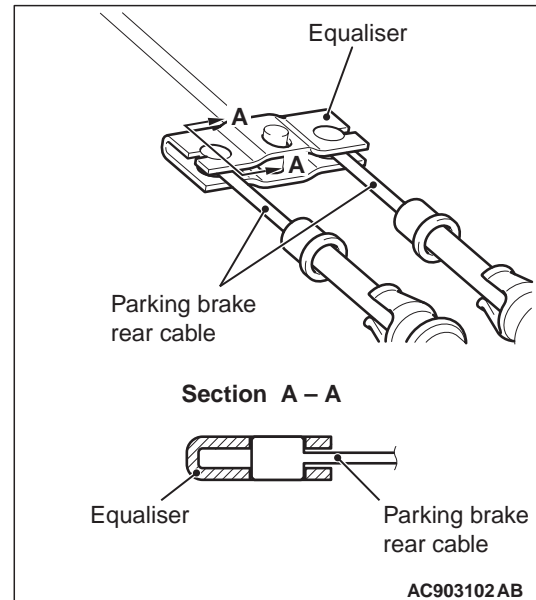
1. Guide the parking brake rear cable through the parking lever hole of the rear brake caliper assembly to the cable retainer.



2. Pull back the parking brake rear cable to assure it is tightly fastened to the cable retainer.

>>B<< PARKING BRAKE REAR CABLE CONNECTION (PARKING BRAKE LEVER SIDE) INSTALLATION**⚠ CAUTION**

Check that the equaliser and the parking brake rear cable are connected correctly. If the parking brake is applied with the equaliser and the parking brake rear cable connected improperly, the equaliser may be damaged.



Connect the parking brake rear cable to the equaliser as shown in the figure.