



# MEDIC UPDATE

## TECHNICAL SERVICE BULLETIN

SUBJECT:  <b>CHANGE FROM WELD NUTS TO FLANGE NUTS FOR REAR SUSPENSION - SERVICE MANUAL REVISION</b>		No: <b>TSB-08-34-002</b>  DATE: <b>June, 2008</b>  MODEL: <b>2007-08 Outlander</b>	
CIRCULATE TO:	<input type="checkbox"/> GENERAL MANAGER	<input checked="" type="checkbox"/> PARTS MANAGER	<input checked="" type="checkbox"/> TECHNICIAN
<input checked="" type="checkbox"/> SERVICE ADVISOR	<input checked="" type="checkbox"/> SERVICE MANAGER	<input type="checkbox"/> WARRANTY PROCESSOR	<input type="checkbox"/> SALES MANAGER
<b>TSB Revision: TSB-08-34-002</b>			

### PURPOSE

To improve ease of installation on the production line, the mounting nuts to install the upper arms to the rear suspension crossmember have been changed from weld nuts to flange nuts. This Technical Service Bulletin provides the corrected illustrations and information relating to the change.

### AFFECTED VEHICLE(S)

- 2007-08 Outlander built beginning August 2007
- Vehicles built with weld nuts where the rear suspension crossmember is being replaced.

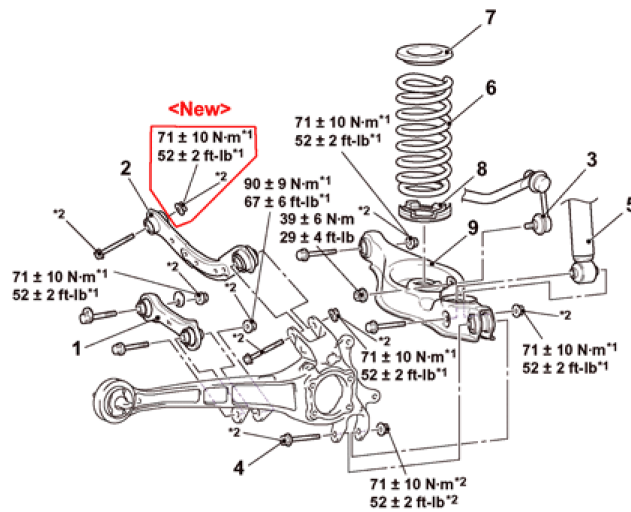
### APPLICABLE MANUAL(S)

Manual	Page/Description	Attachment
2007 OUTLANDER Service Manual	34-11, - Control Link, Upper Arm & Lower Arm Removal and Installation  34-24, 34-25 - Rear Suspension Crossmember Removal and Installation	1-3
2008 OUTLANDER Service Manual	34-11, 34-12 - Control Link, Upper Arm & Lower Arm Removal and Installation  34-37, 34-38 - Rear Suspension Crossmember Removal and Installation	4-7

## Attachment 1

# REAR SUSPENSION CONTROL LINK, UPPER ARM AND LOWER ARM

34- 11



AC602652AH

&lt;&lt;A&gt;&gt;

&gt;&gt;A&lt;&lt;

## Control link and upper arm removal

1. Control link
2. Upper arm

## Lower arm removal steps

3. Stabilizer link connection
4. Lower arm and trailing arm connection

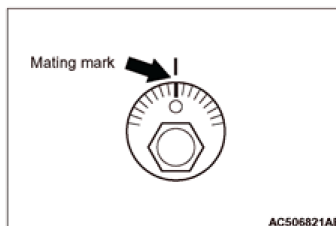
## Lower arm removal steps

5. Shock absorber connection
6. Coil spring
7. Coil spring upper pad
8. Coil spring lower pad
9. Lower arm

## REMOVAL SERVICE POINTS

### <<A>> CONTROL LINK REMOVAL

Make a mating mark on the toe adjusting bolt, and remove the control link.



AC506821AB

## Attachment 2

34-24

REAR SUSPENSION  
REAR SUSPENSION CROSSMEMBER

## REAR SUSPENSION CROSSMEMBER

## REMOVAL AND INSTALLATION

**CAUTION**

For vehicles with the headlight automatic leveling system, disconnect the height sensor from the lower arm before operation to prevent any damage to the height sensor (Refer to

**Pre-removal operation**

Control link arm removal (Refer to P.34-10.)  
Upper arm removal (Refer to P.34-10.)  
Rear suspension stabilizer bar removal (Refer to P.34-22.)  
Center exhaust pipe removal (Refer to GROUP 15 - Exhaust Pipe and Muffler.)  
Driveshaft removal (Refer to GROUP 27B - Driveshaft Assembly P.27B-19.)  
Rear differential assembly removal AWD (Refer to GROUP 27B - Differential Carrier Assembly P.27B-24.)

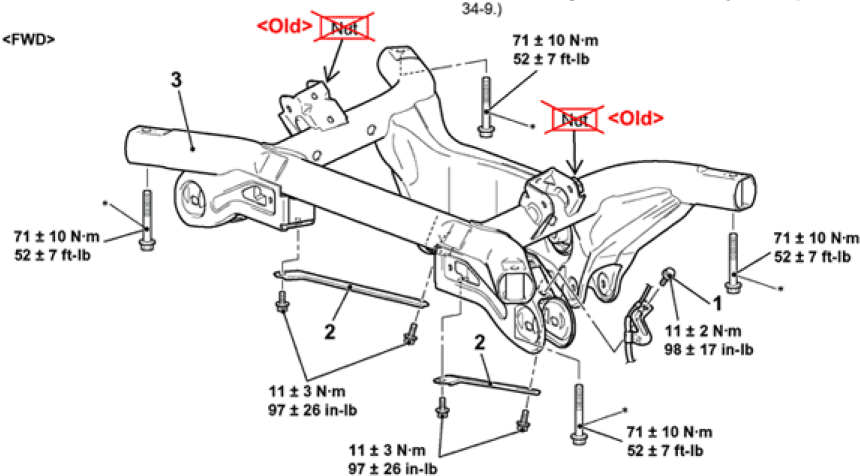
M13401000162USAG0000010000  
GROUP 54Ac, Lighting - Height Sensor P. 54Ac-179.)

The part indicated by \* is the bolt with friction coefficient stabilizer. In removal, replace it with new one.

**Post-installation operation**

Rear differential assembly installation AWD (Refer to GROUP 27B - Differential Carrier Assembly P.27B-24.)  
Driveshaft installation (Refer to GROUP 27B - Driveshaft Assembly P.27B-19.)  
Center exhaust pipe installation (Refer to GROUP 15 - Exhaust Pipe and Muffler.)  
Rear suspension stabilizer bar installation (Refer to P.34-22.)  
Upper arm installation (Refer to P.34-10.)  
Control link installation (Refer to P.34-10.)  
Rear wheel alignment check and adjustment (Refer to P. 34-9.)

&lt;FWD&gt;



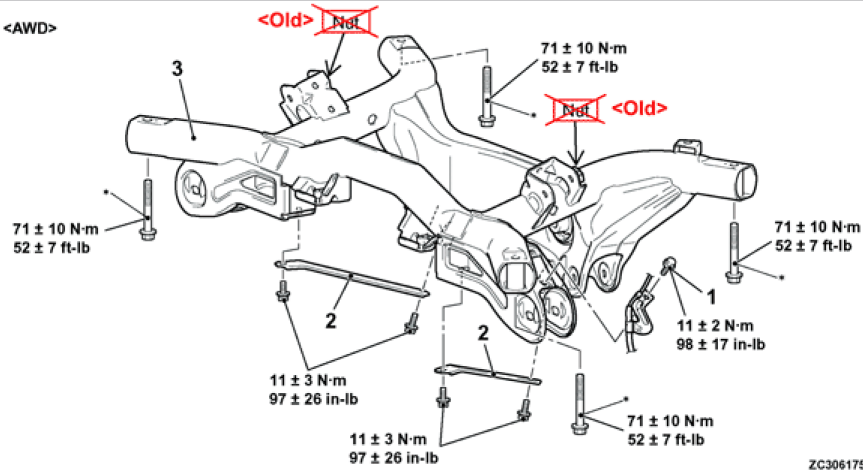
ZC6003580000

## Attachment 3

REAR SUSPENSION  
REAR SUSPENSION CROSSMEMBER

34-25

&lt;AWD&gt;



ZC3061750000

## Removal steps

1. Rear wheel speed sensor clamp
2. Rear suspension crossmember stay

## Removal steps

3. Rear suspension crossmember

## Attachment 4

REAR SUSPENSION  
CONTROL LINK, UPPER ARM AND LOWER ARM

## CONTROL LINK, UPPER ARM AND LOWER ARM

### REMOVAL AND INSTALLATION

M1341004800592

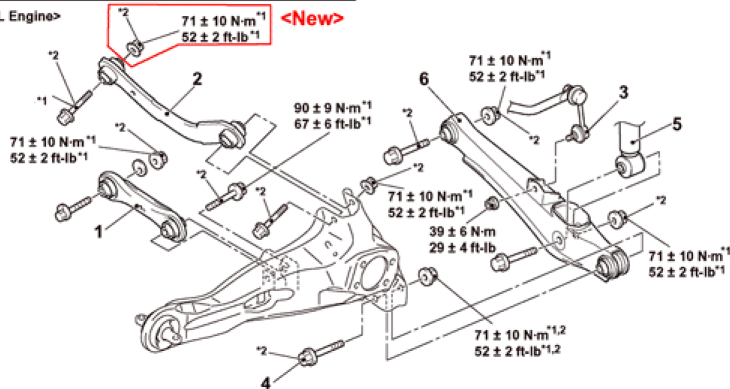
#### CAUTION

- The parts indicated by \*1 should be temporarily tightened, and then fully tightened with the vehicle standing on the ground and the curb weight condition.
- The parts indicated by \*2 are the bolts/nuts with friction coefficient stabilizer. In removal, ensure there is no damage, clean dust and soiling from the bearing and thread surfaces, and tighten them to the specified torque.

#### Post-installation operation

- Using your fingers, press the Ball Joint Dust Cover to check for a crack or damage.
- Wheel alignment check and adjustment (Refer to .)
- Check the beam direction of the headlight (Low beam) (Refer to GROUP 54A – Headlight Aiming).

&lt;2.4L Engine&gt;



AC709406AC

#### Control link and upper arm removal

- <<A>>
1. Control link
    - Fuel tank vapour hose connection (Refer to GROUP 13C, Fuel tank , .)
  - >>A<< 2. Upper arm

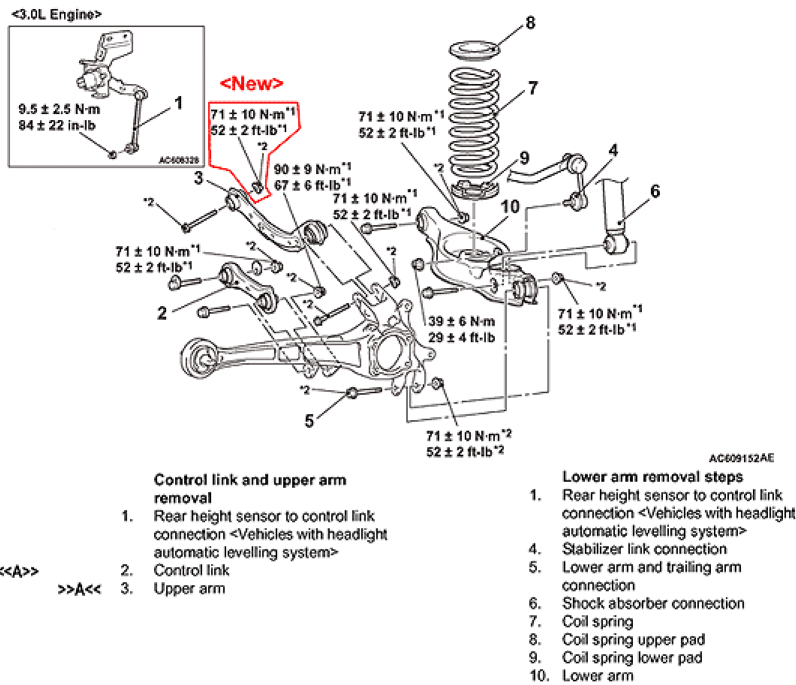
#### Lower arm removal steps

3. Stabilizer link connection
4. Lower arm and trailing arm connection
5. Shock absorber connection
  - Rear suspension crossmember stay (Refer to .)
6. Lower arm

TSB Revision

## Attachment 5

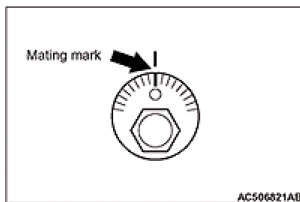
# REAR SUSPENSION CONTROL LINK, UPPER ARM AND LOWER ARM



## REMOVAL SERVICE POINTS

### <<A>> CONTROL LINK REMOVAL

Make a mating mark on the toe adjusting bolt, and remove the control link.



TSB Revision

## Attachment 6

REAR SUSPENSION  
REAR SUSPENSION CROSSMEMBER

## REAR SUSPENSION CROSSMEMBER

### REMOVAL AND INSTALLATION

M1341006800576

#### CAUTION

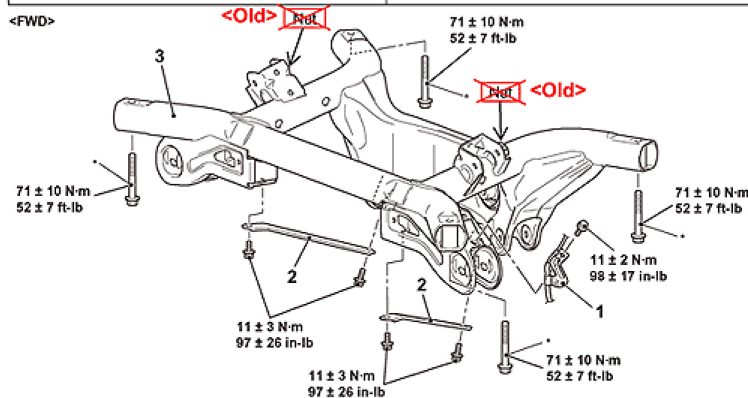
- The parts indicated by \* are the bolts with friction coefficient stabilizer. In removal, ensure there is no damage, clean dust and soiling from the bearing and thread surfaces, and tighten them to the specified torque.

#### Pre-removal operation

- Rear height sensor to control link disconnection (Refer to GROUP54A Headlamp automatic levelling system - Height sensor.)
- Control link arm removal (Refer to .)
- Upper arm removal (Refer to .)
- Rear suspension stabilizer bar removal (Refer to .)
- Center exhaust pipe removal (Refer to GROUP 15 - Exhaust Pipe and Muffler <4B1>, <6B3>.)
- Driveshaft removal (Refer to GROUP 27B - Driveshaft Assembly.)
- Rear differential assembly removal AWD (Refer to GROUP 27B - Differential Carrier Assembly.)

#### Post-installation operation

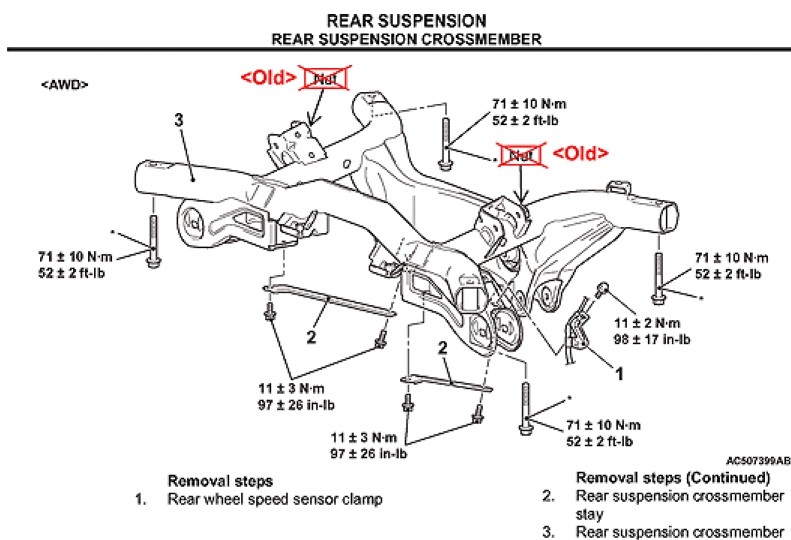
- Rear differential assembly installation AWD (Refer to GROUP 27B - Differential Carrier Assembly.)
- Driveshaft installation (Refer to GROUP 27B - Driveshaft Assembly.)
- Center exhaust pipe installation (Refer to GROUP 15 - Exhaust Pipe and Muffler <4B1>, <6B3>.)
- Rear suspension stabilizer bar installation (Refer to .)
- Upper arm installation (Refer to .)
- Control link installation (Refer to .)
- Rear height sensor to control link connection (Refer to GROUP54A Headlamp automatic levelling system - Height sensor.)
- Rear wheel alignment check and adjustment (Refer to .)
- Check the beam direction of the headlight (Low beam) (Refer to GROUP 54A - Headlight Aiming.)



AC703701AB

TSB Revision

## Attachment 7



TSB Revision

Copyright Mitsubishi Motors North America, Inc.

The information contained in this bulletin is subject to change. For the latest version of this document, go to the Mitsubishi Dealer Link, MEDIC, or the Mitsubishi Service Information website ([www.mitsubishitechinfo.com](http://www.mitsubishitechinfo.com)).