
GROUP 25**PROPELLER SHAFT****CONTENTS**

GENERAL INFORMATION	25-2
---------------------------	-------------

GENERAL INFORMATION

M2250000100164

For 4WD vehicles, a 3 way split 4-joint type propeller shaft with centre bearing, with the following features is utilized:

- The DOJ, which has less sliding resistance, is used for the No.3 joint. This reduces idling vibration.

- An insulator is located at the centre bearing to vehicle body joint, reducing vibration.
- The BJ is used for the No.4 joint.

NOTE:

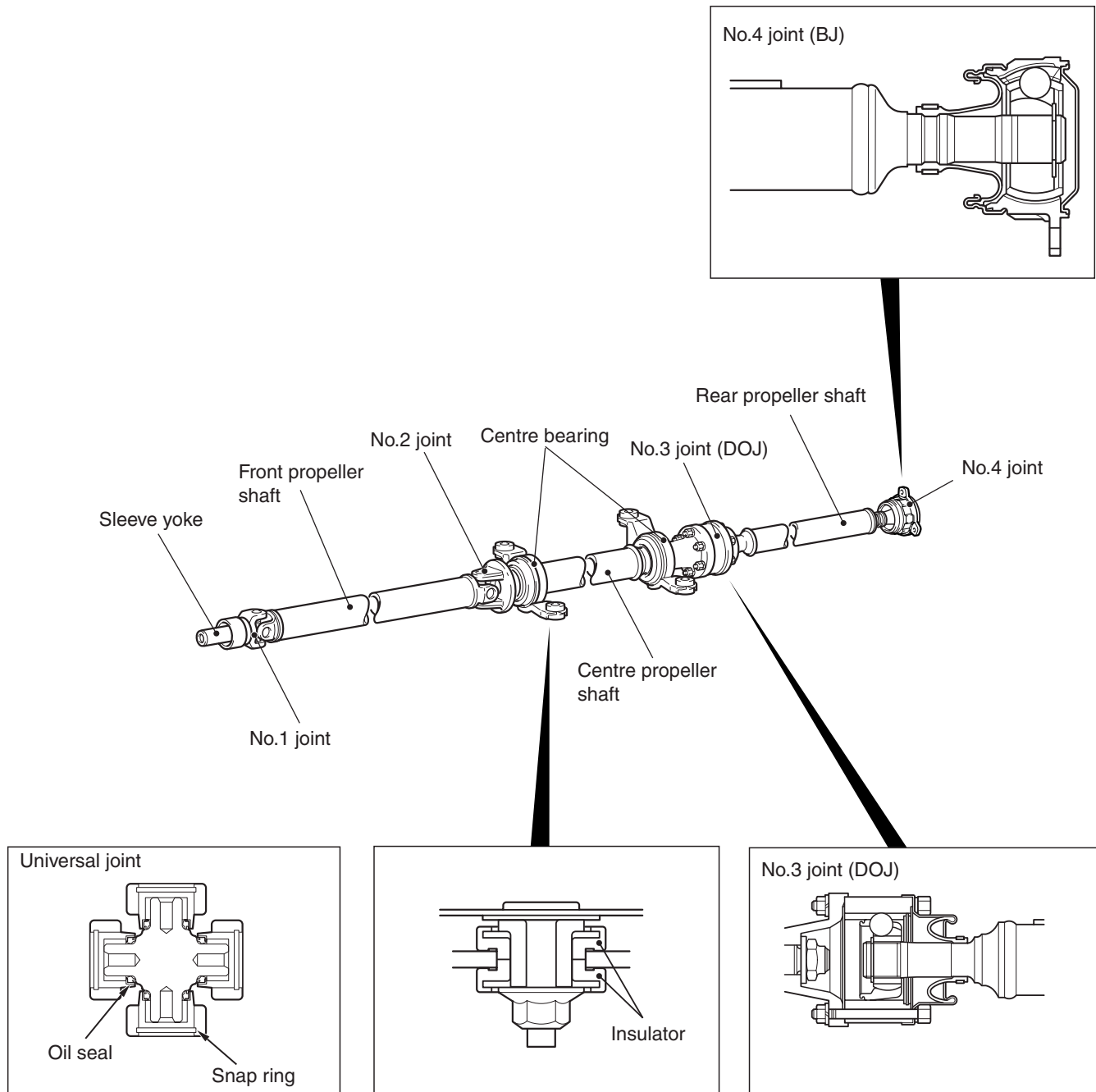
- DOJ: Double Offset Joint
- BJ: Birfield Joint

SPECIFICATIONS

Item			Specification
Propeller shaft	Type		3 way split 4-joint type propeller shaft
	Length* × Outside diameter mm	Front	627 x 65
		Centre	528.8 x 65
		Rear	761.3 x 50.8 <2000, 2400>, 761.3 x 65 <2000-Turbo>
Universal joint	Type	No.1	Cross type (snap ring method)
		No.2	Cross type (snap ring method)
		No.3	Constant velocity type (DOJ)
		No.4	Constant velocity type (BJ)
	Cross type joint	Bearing	Non-lubrication type needle roller bearing
		Journal diameter mm	14.7

NOTE: *:The propeller shaft length indicates the length between the centre points of each joint.

CONSTRUCTION DIAGRAM



NOTES