

GROUP 21A

CLUTCH

CONTENTS

GENERAL INFORMATION	21A-2	CLUTCH PEDAL.....	21A-5
SERVICE SPECIFICATIONS.....	21A-2	REMOVAL AND INSTALLATION	21A-5
LUBRICANTS	21A-2	CLUTCH CONTROL.....	21A-6
ON-VEHICLE SERVICE.....	21A-3	REMOVAL AND INSTALLATION	21A-6
CLUTCH PEDAL CHECK AND		INSPECTION.....	21A-7
ADJUSTMENT	21A-3	DISASSEMBLY AND REASSEMBLY	21A-8
CLUTCH BLEEDING	21A-4	INSPECTION.....	21A-9

GENERAL INFORMATION

M1211000100201

The clutch is a dry single-disc, diaphragm type; hydraulic pressure is used for the clutch control. The clutch shares a brake fluid reservoir with the brake system.

SERVICE SPECIFICATIONS

M1211000300197

Item	Standard value
Clutch pedal height mm	201– 205
Clutch pedal clevis pin play mm	1 – 3
Clutch pedal free play mm	4 – 13
Distance between the clutch pedal and the clutch pedal stopper when the clutch pedal is released mm	105 or more

LUBRICANTS

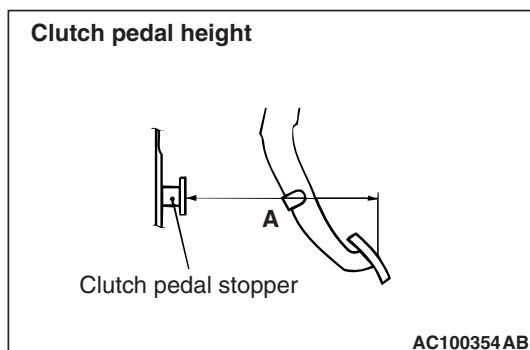
M1211000400150

Item	Specified lubricant	Quantity
Clutch fluid	Brake Fluid DOT 3 or DOT 4	As required
Pushrod assembly	Rubber grease	As required
Boot	Rubber grease	As required
Release cylinder push rod	MITSUBISHI genuine grease Part No.0101011	As required

ON-VEHICLE SERVICE

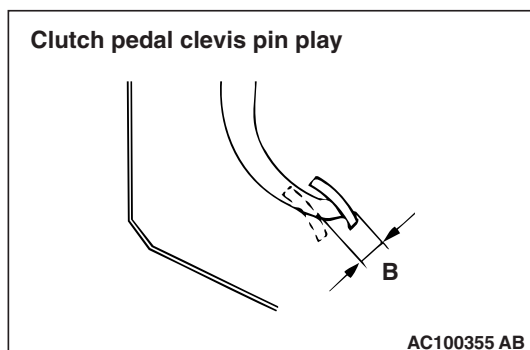
CLUTCH PEDAL CHECK AND ADJUSTMENT

M1211000900218



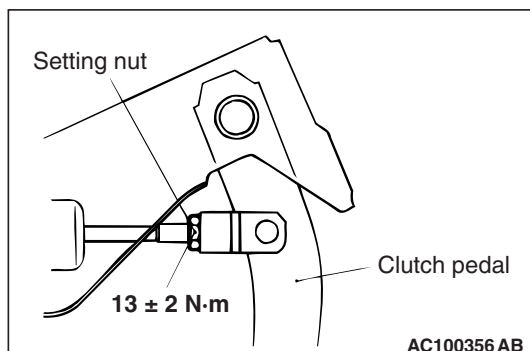
1. Measure the clutch pedal height.

Standard value (A): 201 – 205 mm



2. Measure the clutch pedal clevis pin play.

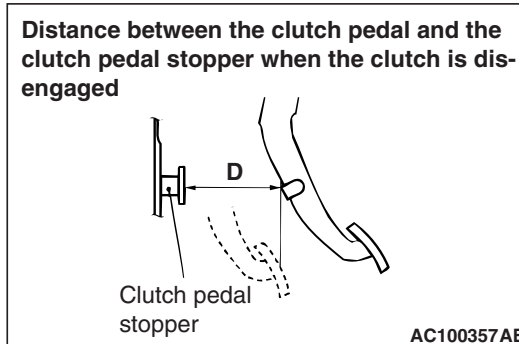
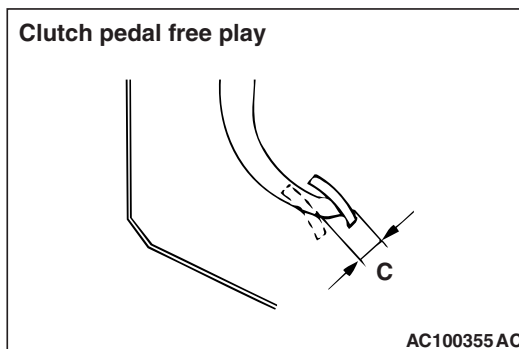
Standard value (B): 1 – 3 mm



CAUTION

Do not push in the master cylinder pushrod at this time, otherwise the clutch will not operate properly.

3. If the clutch pedal height and clutch pedal clevis pin play are not within the standard value, loosen the setting nut to adjust the clutch pedal height and clevis pin play to the standard value.



4. After completing the adjustments, confirm that the clutch pedal free play (measured at the face of the pedal pad) and the distance between the clutch pedal (the face of the pedal pad) and the clutch pedal stopper when the clutch is disengaged are within the standard value ranges.

Standard value (C): 4 – 13 mm

Standard value (D): 105 mm or more

5. If the clutch pedal free play and the distance between the clutch pedal and the clutch pedal stopper when the clutch is disengaged do not agree with the standard values, it is probably the result of either air in the hydraulic system or a faulty master cylinder, release cylinder or clutch. Bleed the air, or disassemble and inspect the master cylinder, release cylinder or clutch.

CLUTCH BLEEDING

M1211001400249

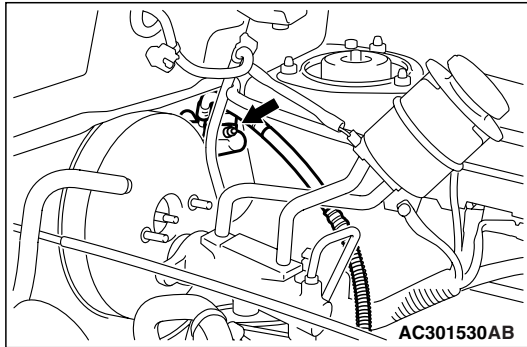
CLUTCH MASTER CYLINDER BLEEDING

CAUTION

Use the specified brake fluid. Do not mix brake fluids.

Specified fluid: Brake fluid DOT 3 or DOT 4

1. Disconnect the brake tube clamp and remove the brake master cylinder with the brake tubes connected.
2. Remove the brake fluid reservoir with the hoses connected.



3. Connect a hose with a bottle to the bleeder screw.
4. Open the bleed nipple.
5. Depress the clutch pedal slowly. Open the bleeder screw to let air and brake fluid out. Close the bleeder screw. Release the clutch pedal. Repeat until only brake fluid and no air comes out.
6. Check that the brake fluid reservoir level stays between "MAX" and "MIN" marks throughout the clutch bleeding process.

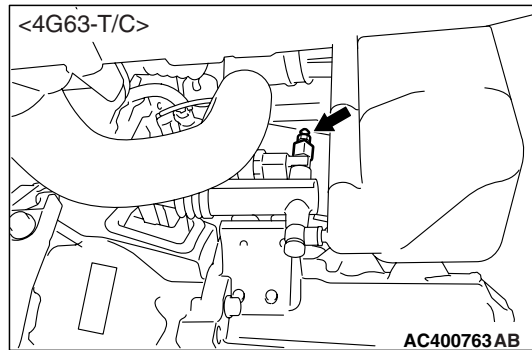
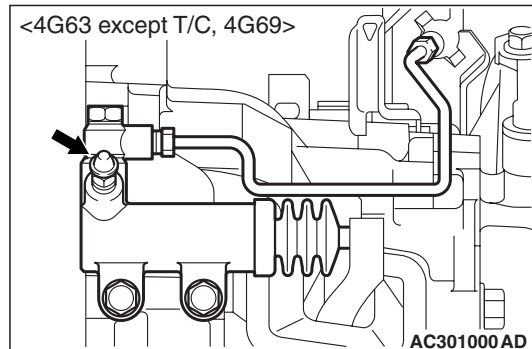
CLUTCH RELEASE CYLINDER BLEEDING

CAUTION

Use the specified brake fluid. Do not mix brake fluids.

Specified fluid: Brake fluid DOT 3 or DOT 4

1. Remove the under cover.



2. Connect a hose with a bottle to the bleeder screw.
3. Open the bleed nipple.
4. Depress the clutch pedal slowly. Open the bleeder screw to let air and brake fluid out. Close the bleeder screw. Release the clutch pedal. Repeat until only brake fluid and no air comes out.
5. Check that the brake fluid reservoir level stays between "MAX" and "MIN" marks throughout the clutch bleeding process.

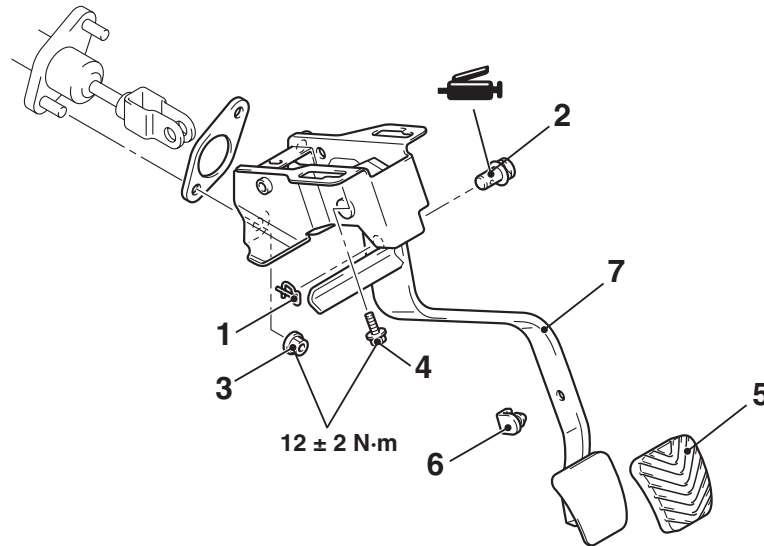
CLUTCH PEDAL

REMOVAL AND INSTALLATION

M1211001600276

Post-installation Operation

- Clutch Pedal Adjustment (Refer to [P.21A-3](#)).



AC301004AB

Removal steps

- Instrument panel under cover (Refer to GROUP 52A, Instrument panel [P.52A-2](#)).
1. Snap pin
 2. Clevis pin
 3. Clutch master cylinder mounting nut

Removal steps (Continued)

4. Clutch pedal assembly mounting bolt
5. Pedal pad
6. Pedal stopper
7. Clutch pedal assembly

CLUTCH CONTROL

REMOVAL AND INSTALLATION

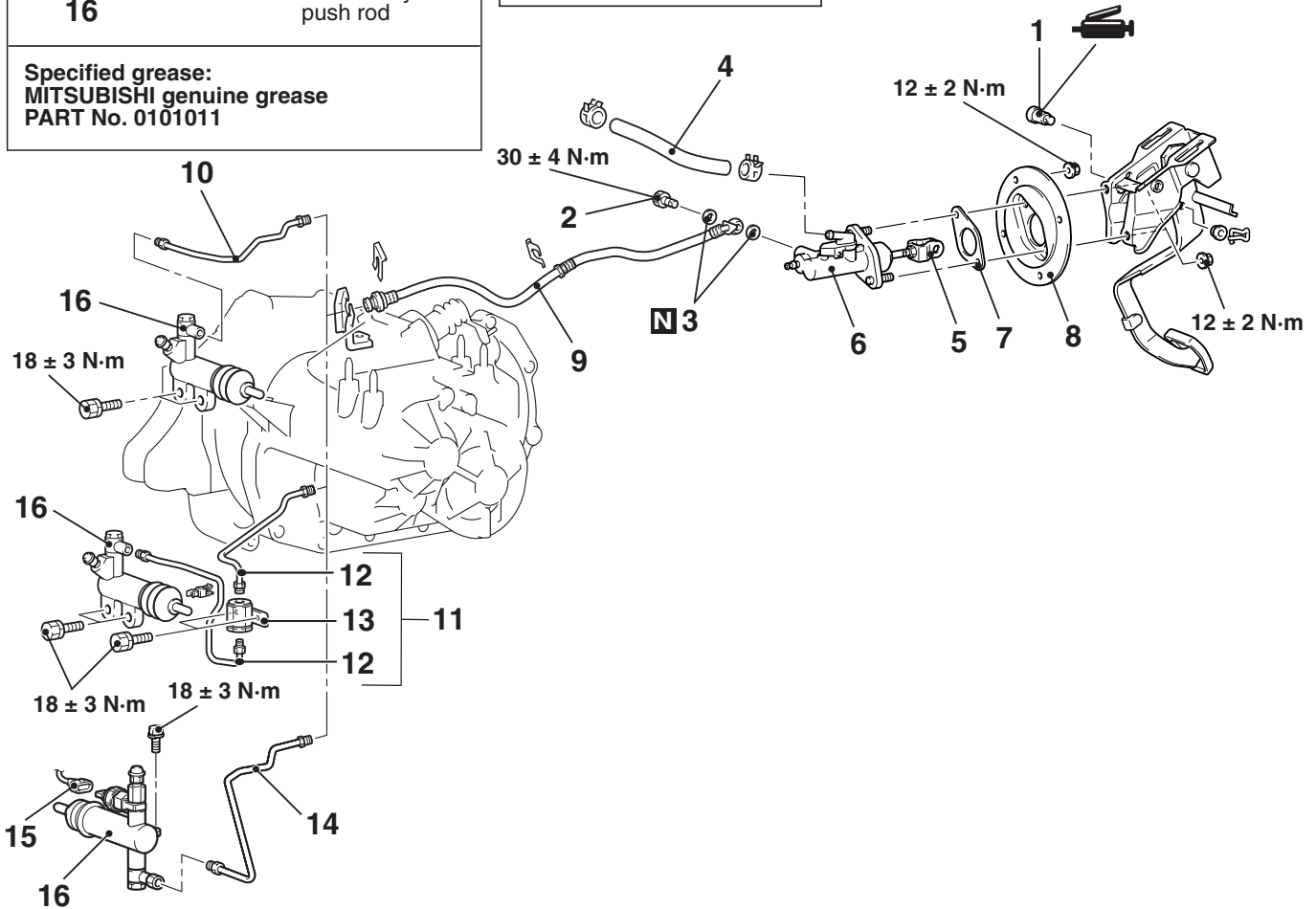
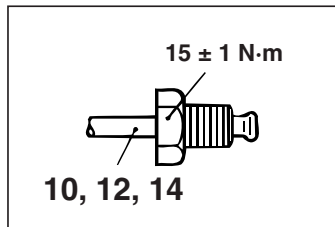
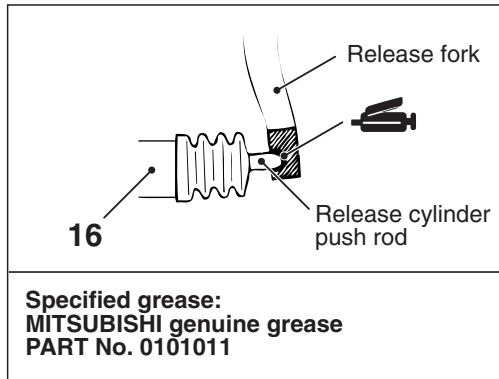
M1211001900288

Pre-removal Operation

Clutch Fluid Draining

Post-installation Operation

- Clutch Fluid Supplying
- Clutch Line Bleeding (Refer to [P.21A-4](#)).
- Clutch Pedal Adjustment (Refer to [P.21A-3](#)).



AC400689AB

Clutch master cylinder removal steps

1. Clevis pin assembly
2. Eye bolt
3. Gasket
4. Reservoir hose
5. Clevis pin and pushrod assembly connecting part
6. Clutch master cylinder

7. Sealer
 8. Retainer plate
- Clutch release cylinder removal steps**
10. Clutch pipe <4G63-2WD>
 11. Clutch pipe and clutch orifice assembly <4G63-4WD, 4G69>
 12. Clutch pipe <4G63-4WD, 4G69>

**Clutch release cylinder removal
steps (Continued)**

13. Clutch orifice assembly
<4G63-4WD, 4G69>
14. Clutch pipe <4G63-Turbo>
15. Harness connector <4G63-Turbo>
16. Clutch release cylinder

Clutch line removal steps

9. Clutch hose
10. Clutch pipe <4G63-2WD>
12. Clutch pipe <4G63-4WD, 4G69>
14. Clutch pipe <4G63-Turbo>

REMOVAL SERVICE POINT

**<<A>> CLUTCH MASTER CYLINDER
REMOVAL**

1. Disconnect the brake tube clamp and remove the brake master cylinder with the brake tubes connected.
2. Remove the brake fluid reservoir with the hoses connected.
3. Remove the clutch master cylinder.

INSPECTION

M1211002000136

- Check the master cylinder or clutch hose for fluid leakage.
- Check the clutch hose or tube for cracks or clogging.

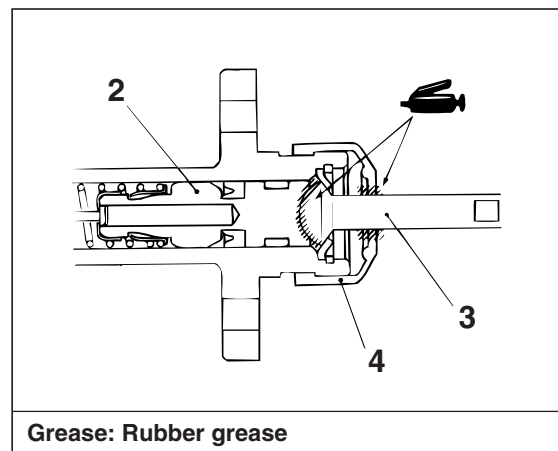
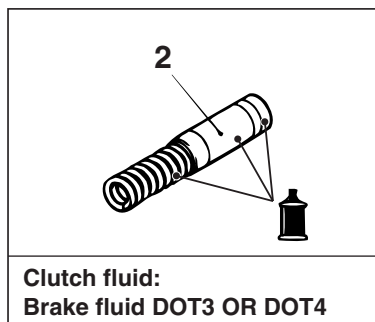
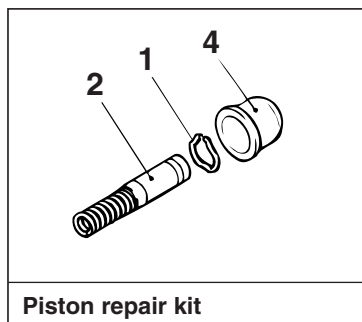
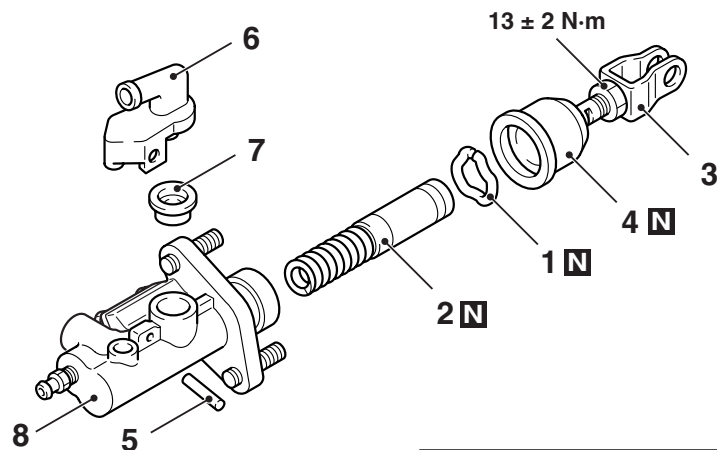
DISASSEMBLY AND REASSEMBLY

M1211002100199

CLUTCH MASTER CYLINDER

CAUTION

Do not disassemble the piston assembly.



AC309450 AB

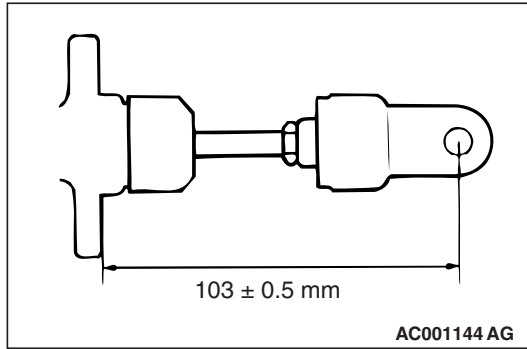
Disassembly steps

- >>A<<
1. Piston stopper ring
 2. Piston assembly
 3. Pushrod assembly
 4. Boot

Disassembly steps (Continued)

5. Spring pin
6. Nipple
7. Seal
8. Master cylinder body

REASSEMBLY SERVICE POINT



>>A<< PUSHROD ASSEMBLY INSTALLATION

Set the length of the pushrod assembly to the dimension shown to make the adjustment of the clutch pedal easier.

INSPECTION

M1211002200130

- Check inside the cylinder body for rust and scars.
- Check the piston cup for wear and deformation.
- Check the piston for rust and scars.
- Check the pipe connection for clogging.

NOTES