

GROUP 51

EXTERIOR

CONTENTS

FRONT BUMPER ASSEMBLY	51-3	GARNISHES	51-18
ADHESIVE	51-3	ADHESIVE	51-18
FRONT BUMPER ASSEMBLY	51-3	SPECIAL TOOL	51-18
REMOVAL AND INSTALLATION	51-3	GARNISHES	51-18
DISASSEMBLY AND REASSEMBLY	51-4	SIDE SILL GARNISH REMOVAL AND INSTALLATION <INVITE>	51-18
REAR BUMPER ASSEMBLY	51-6	SIDE SILL GARNISH REMOVAL AND INSTALLATION <INTENSE, TURBO>	51-20
ADHESIVE	51-6	TAILGATE GARNISH REMOVAL AND INSTALLATION	51-23
REAR BUMPER ASSEMBLY	51-6		
REMOVAL AND INSTALLATION	51-6	DOOR SASH TAPE	51-24
DISASSEMBLY AND REASSEMBLY	51-8	SPECIAL TOOL	51-24
RADIATOR GRILLE	51-10	DOOR SASH TAPE	51-24
REMOVAL AND INSTALLATION	51-10	REMOVAL AND INSTALLATION	51-24
OVERFENDER <INTENSE, TURBO>	51-12	TAILGATE SPOILER	51-29
ADHESIVE	51-12	SPECIAL TOOL	51-29
SPECIAL TOOL	51-12	TAILGATE SPOILER	51-29
OVERFENDER	51-12	REMOVAL AND INSTALLATION	51-29
REMOVAL AND INSTALLATION	51-12	ROOF RAIL	51-30
MOULDINGS	51-16	REMOVAL AND INSTALLATION	51-30
SPECIAL TOOL	51-16	UNDER COVER	51-31
MOULDINGS	51-16	REMOVAL AND INSTALLATION	51-31
REMOVAL AND INSTALLATION	51-16		

Continued on next page

WINDSHIELD WIPER AND WASHER

WINDSHIELD WIPER AND WASHER	51-32
SERVICE SPECIFICATION	51-32
TROUBLESHOOTING	51-32
WINDSHIELD WIPER	51-33
REMOVAL AND INSTALLATION	51-33
INSPECTION	51-34
WINDSHIELD WASHER	51-36
REMOVAL AND INSTALLATION	51-36
INSPECTION	51-37

REAR WIPER AND WASHER

REAR WIPER AND WASHER	51-38
SERVICE SPECIFICATION	51-38
TROUBLESHOOTING	51-38
ON-VEHICLE SERVICE	51-38
CHECK OF REAR WIPER OPERATION WHEN SELECTOR LEVER IS AT THE "R" POSITION	51-38
REAR WIPER AND WASHER	51-39
REMOVAL AND INSTALLATION	51-39
INSPECTION	51-40

WIPER DEICER

WIPER DEICER	51-42
GENERAL INFORMATION	51-42
TROUBLESHOOTING	51-42

DIAGNOSIS TROUBLESHOOTING FLOW	51-42
SYMPTOM PROCEDURES	51-43
WIPER DEICER	51-51
INSPECTION	51-51

HEADLAMP WASHER

HEADLAMP WASHER	51-52
TROUBLESHOOTING	51-52
HEADLAMP WASHER	51-52
REMOVAL AND INSTALLATION	51-52
INSPECTION	51-53

MARK

MARK	51-54
REMOVAL AND INSTALLATION	51-54

DOOR MIRROR

DOOR MIRROR	51-56
GENERAL INFORMATION	51-56
TROUBLESHOOTING	51-56
DIAGNOSIS TROUBLESHOOTING FLOW	51-56
TROUBLE SYMPTOM CHART	51-56
SYMPTOM PROCEDURES	51-57
DOOR MIRROR	51-65
REMOVAL AND INSTALLATION	51-65
INSPECTION	51-67

FRONT BUMPER ASSEMBLY

ADHESIVE

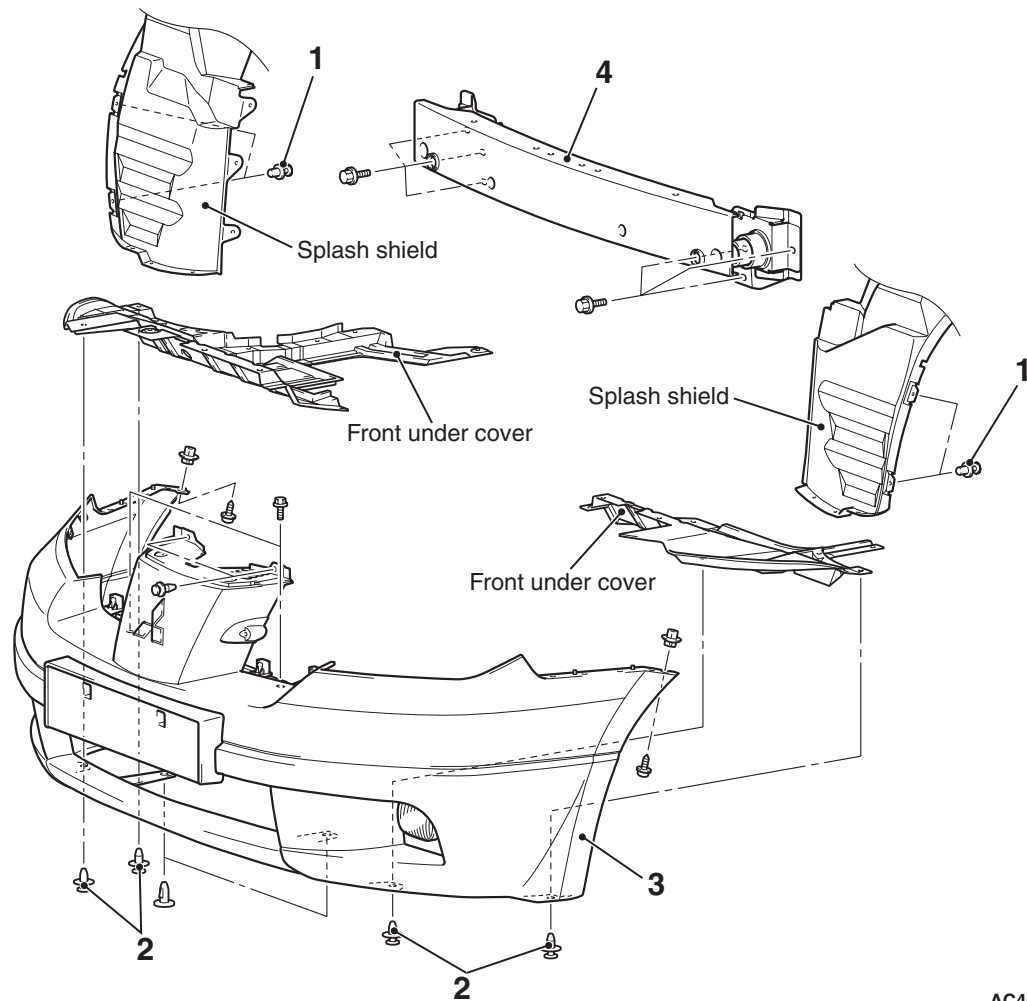
M1511000500835

Application	Specified adhesive
Front bumper	Double-sided tape: a [14 mm width and 1.2 mm thickness], b [4.0 mm width and 1.2 mm thickness]

FRONT BUMPER ASSEMBLY

REMOVAL AND INSTALLATION

M1511001400831



AC400911AB

Removal steps

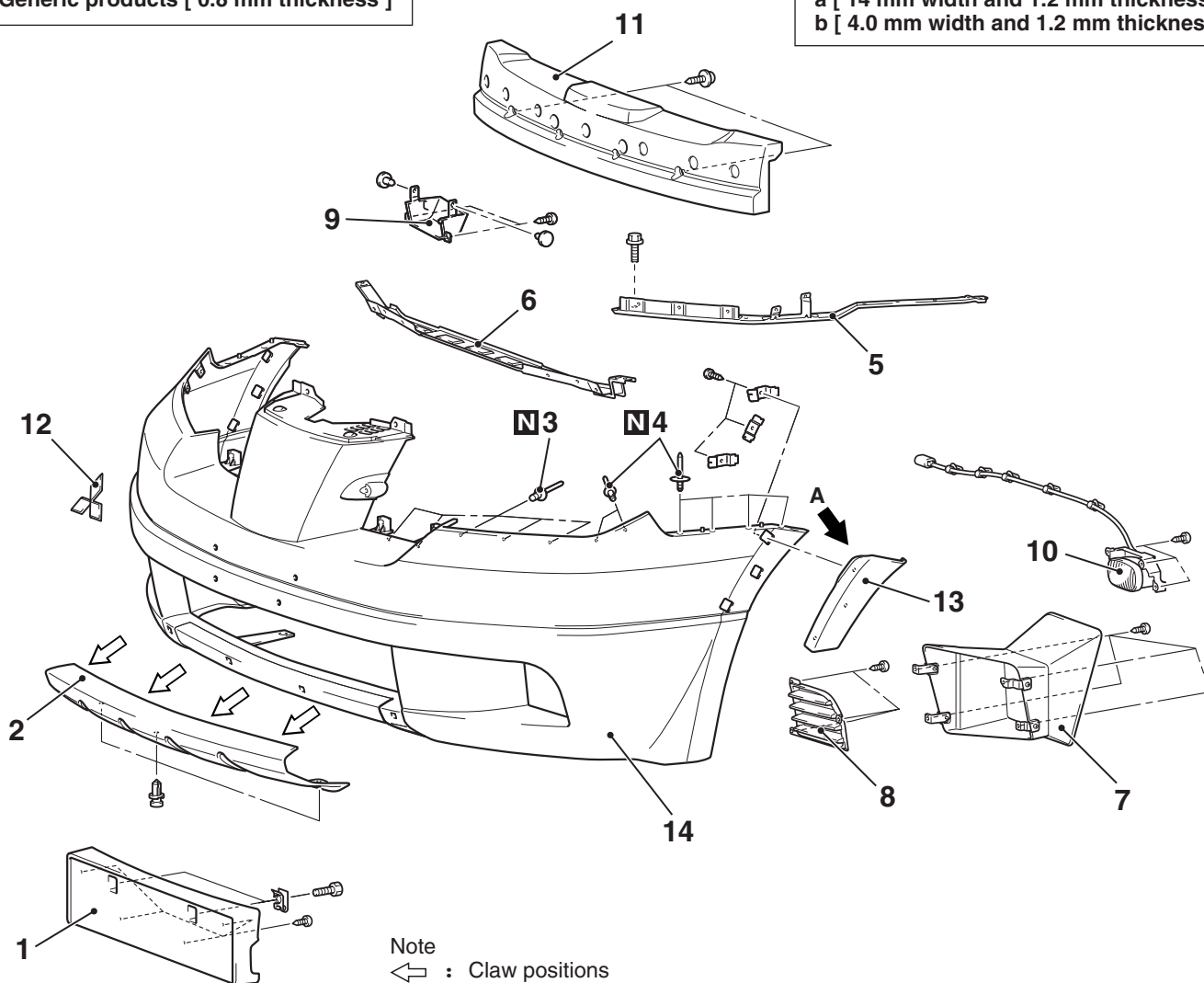
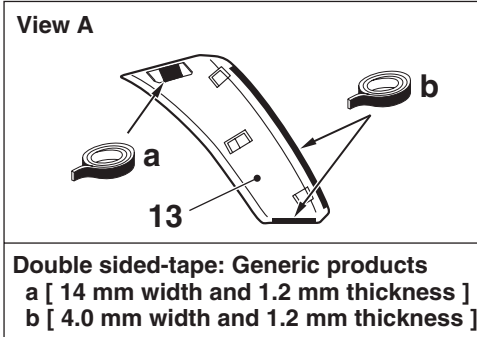
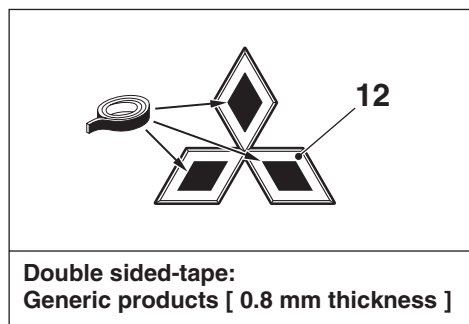
- Radiator grille (Refer to [P.51-10](#)).
- 1. Splash shield mounting clips
- 2. Front under cover mounting clips

Removal steps (Continued)

- Fog lamp connector connection
- 3. Front bumper assembly
- 4. Front bumper beam

DISASSEMBLY AND REASSEMBLY

M1511001601076

**Disassembly steps**

1. Licence plate garnish
2. Front bumper cover
3. Rivets A
4. Rivets B
5. Front bumper side plate
6. Front bumper centre reinforcement
7. Oil cooler duct
8. Air intake bezel (Vehicles without fog lamp)

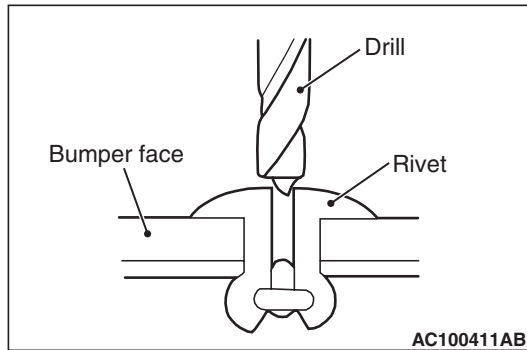
Disassembly steps (Continued)

9. Fog lamp bezel (Vehicles with fog lamp)
10. Fog lamp assembly
11. Front bumper core
12. Three-diamond mark
13. Front bumper extension <INTENSE, TURBO>
14. Front bumper face

AC401388AB

DISASSEMBLY SERVICE POINT

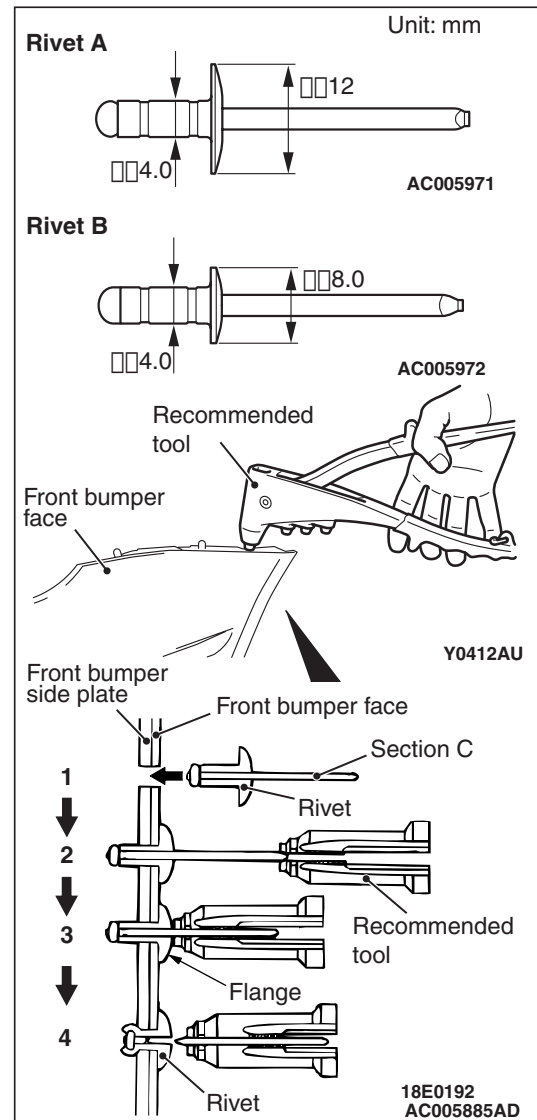
<<A>> RIVETS A / RIVETS B REMOVAL



Use a drill ($\phi 4.0$ mm) to make a hole in the rivet to break it, and then remove the rivet.

REASSEMBLY SERVICE POINT

>>A<< RIVETS B / RIVETS A INSTALLATION



Use recommended tool shown in the illustration to connect the rivet by the following procedure.

1. Insert rivets A and rivets B into the front bumper face and front bumper upper plate.
2. Place the recommended tool over section C of rivet.
3. While pushing the flange surface of the rivet with the recommended tool, press the handle of the tool.
4. The thin part of section C of the rivet will break and the rivet will then be attached.

REAR BUMPER ASSEMBLY

ADHESIVE

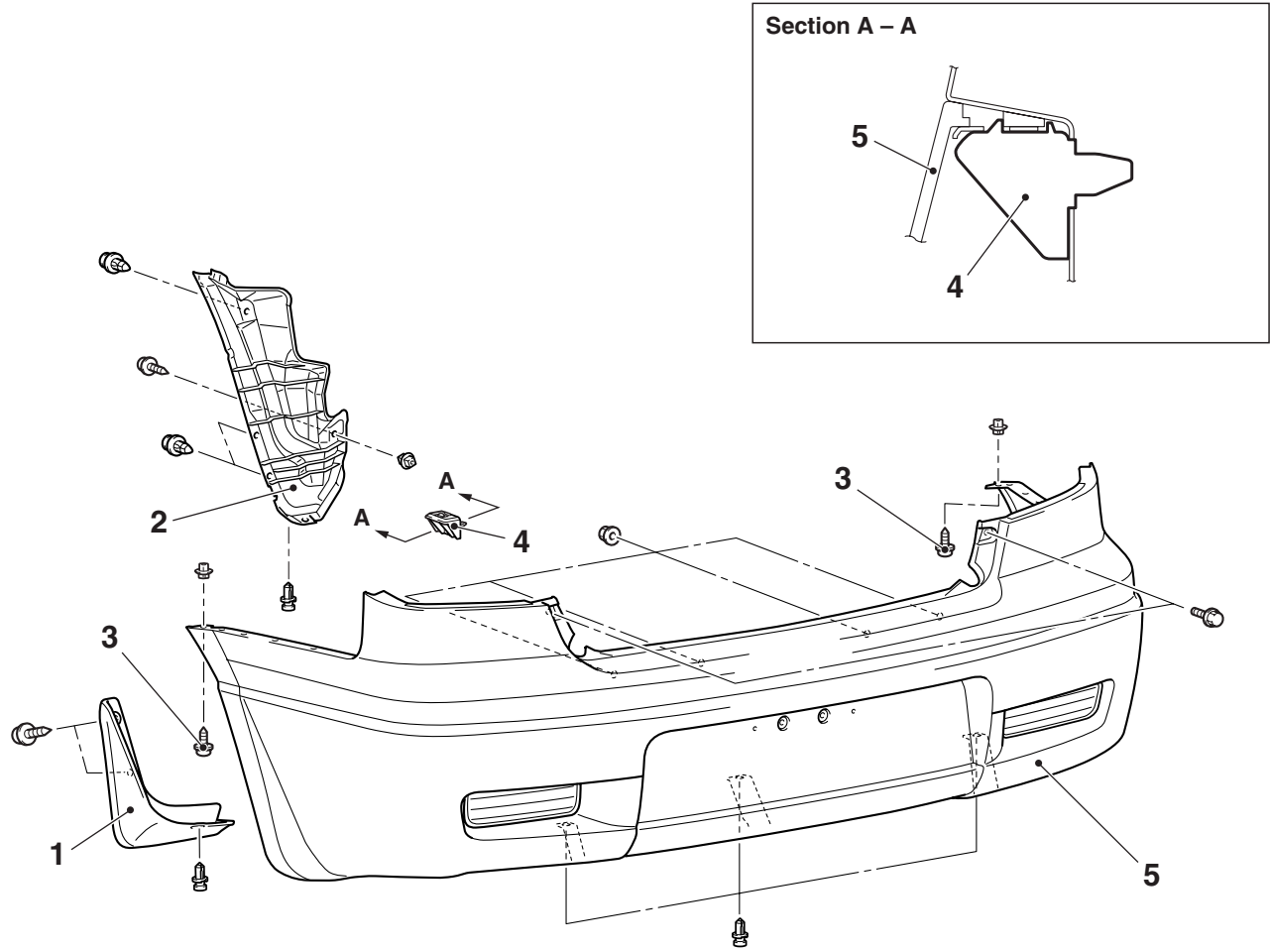
M1511000500846

Application	Specified adhesive
Rear bumper	Double-sided tape: [4.0 mm width and 1.2 mm thickness]

REAR BUMPER ASSEMBLY

REMOVAL AND INSTALLATION

M1511001900717



AC401083AB

Removal steps

- Rear combination lamp
- Rear end trim
- 1. Mud guard
- 2. Rear splash shield
- 3. Tapping screw

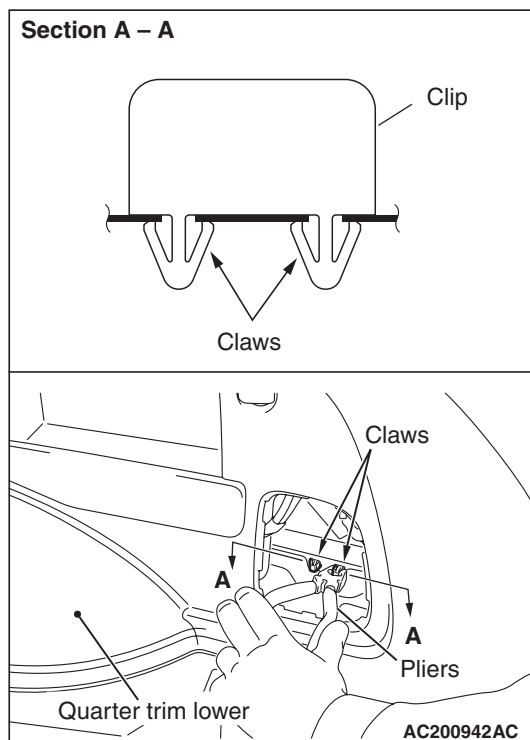
<<A>>

Removal steps (Continued)

- Ventilation cap (Refer to GROUP 52A, Trims [P.52A-10.](#))
- 4. Clip
- Rear bumper harness connector connection
- 5. Rear bumper assembly

REMOVAL SERVICE POINT

<<A>> CLIPS REMOVAL

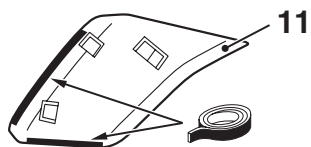


Remove the clip with a pair of pliers by removing the claws of the clip from the cabin side.

DISASSEMBLY AND REASSEMBLY

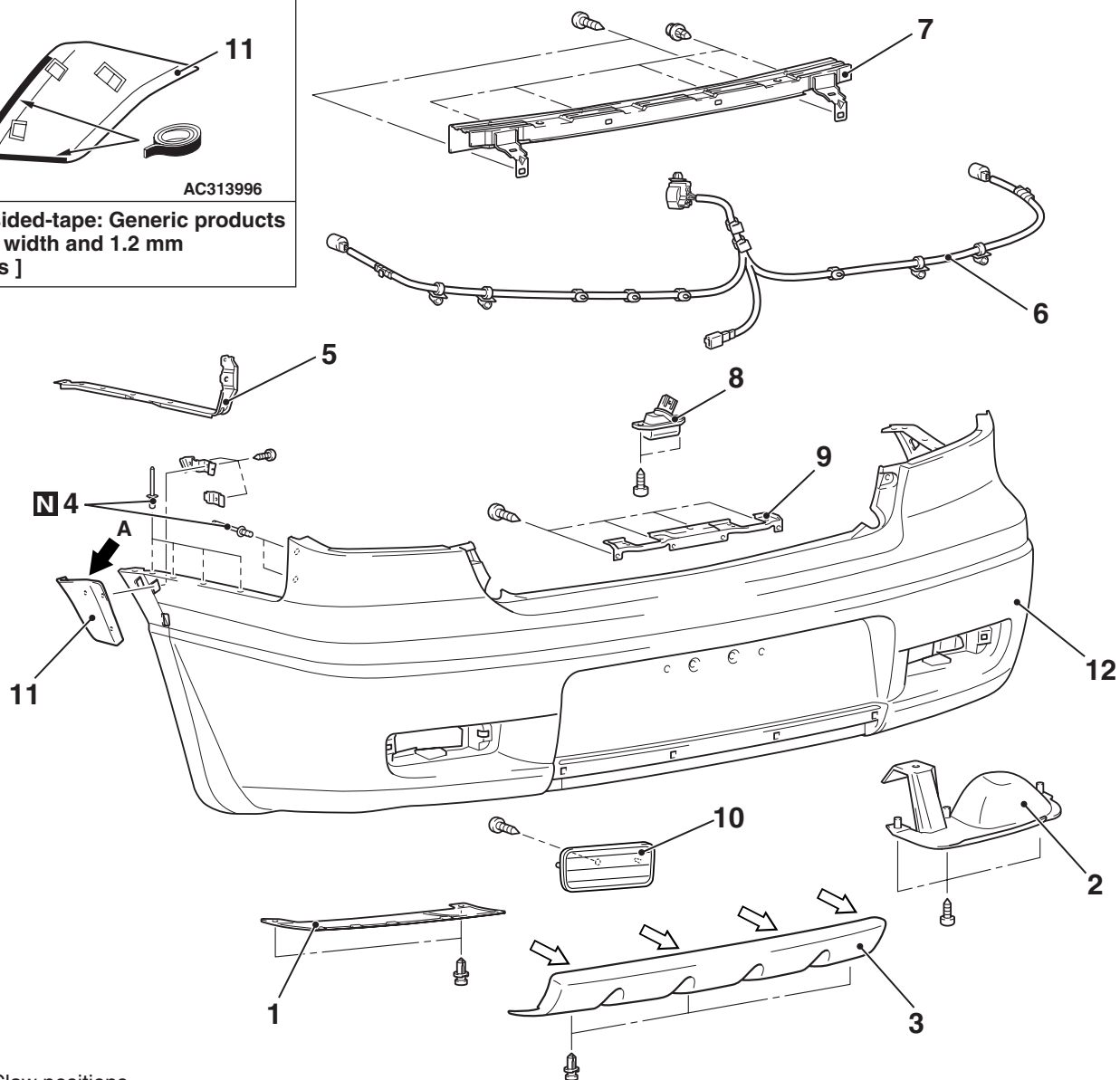
M1511002100617

View A



AC313996

Double sided-tape: Generic products
[4.0 mm width and 1.2 mm
thickness]



Note

↔ : Claw positions

Disassembly steps

1. Side cover
2. Muffler cover
3. Rear bumper cover
- <<A>> >>A<< 4. Rivets
5. Rear bumper side plate
6. Rear bumper harness
7. Rear bumper reinforcement

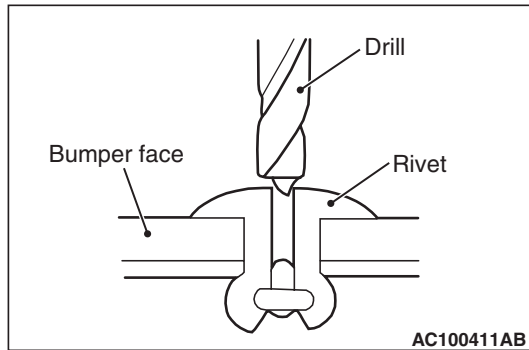
Disassembly steps (Continued)

8. Licence plate lamp assembly
9. Licence plate bracket
10. Reflector
11. Rear bumper extension <INTENSE, TURBO>
12. Rear bumper face

AC401084AD

DISASSEMBLY SERVICE POINT

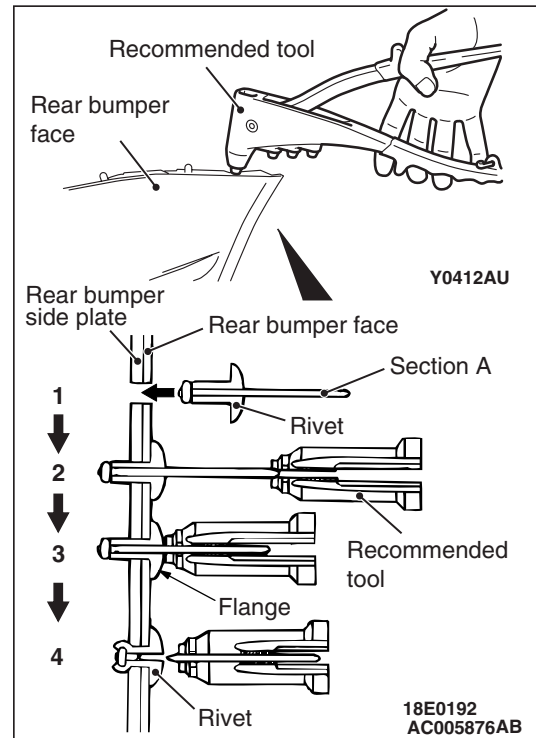
<<A>> RIVETS REMOVAL



Use a drill ($\phi 4.0$ mm) to make a hole in the rivet to break it, and then remove the rivet.

REASSEMBLY SERVICE POINT

>>A<< RIVETS INSTALLATION



Use recommended tool shown in the illustration to connect the rivet by the following procedure.

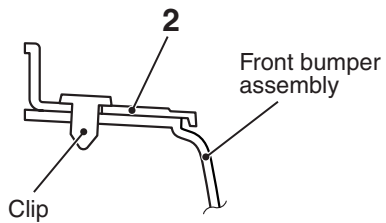
1. Insert the rivet into the base material (rear bumper face, rear bumper side plate).
2. Place the recommended tool over section A of rivet.
3. While pushing the flange surface of the rivet with the recommended tool, press the handle of the tool.
4. The thin part of section A of the rivet will break and the rivet will then be attached.

RADIATOR GRILLE

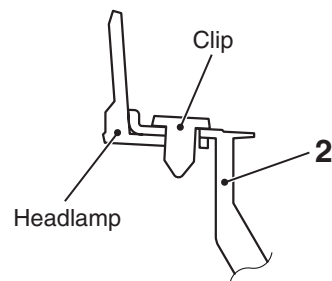
REMOVAL AND INSTALLATION

M1511002900475

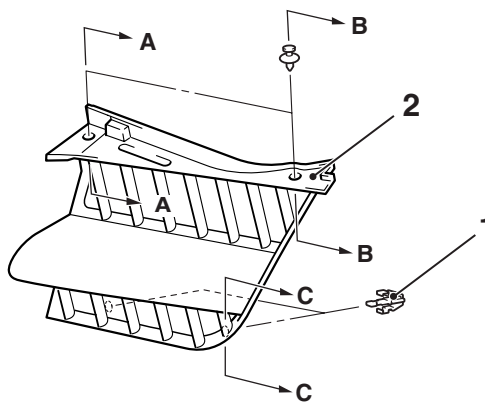
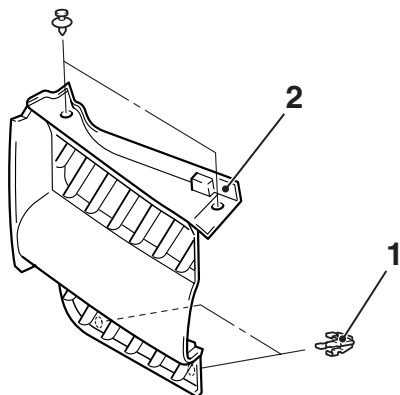
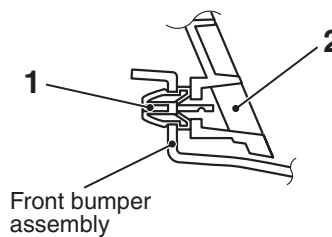
Section A – A



Section B – B



Section C – C



Removal steps

<<A>>

1. Clips

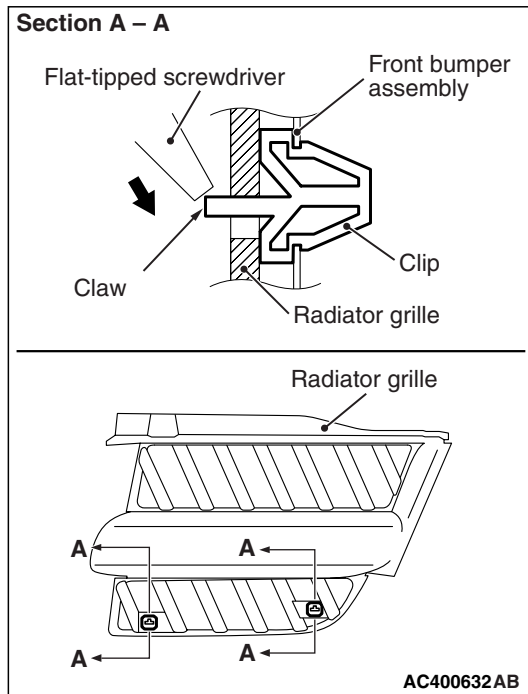
>>A<<

2. Radiator grilles

AC314203AD

REMOVAL SERVICE POINT

<<A>> CLIPS REMOVAL



To remove the clips from the radiator grille, gently pull forward the radiator grille, and use a flat-tipped screwdriver to hold the claw of the clip in the direction of the arrow.

INSTALLATION SERVICE POINT

>>A<< RADIATOR GRILLE INSTALLATION

Install the radiator grille with the clips installed.

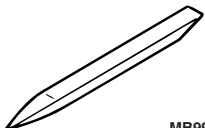
OVERFENDER <INTENSE, TURBO>**ADHESIVE**

M1511000500824

Application	Specified adhesive
Front door/ rear door/ rear overfender	Double-sided tape: a [4.0 mm width and 0.4 mm thickness], b [6.0 mm width and 0.4 mm thickness], c [4.0 mm width and 1.2 mm thickness]

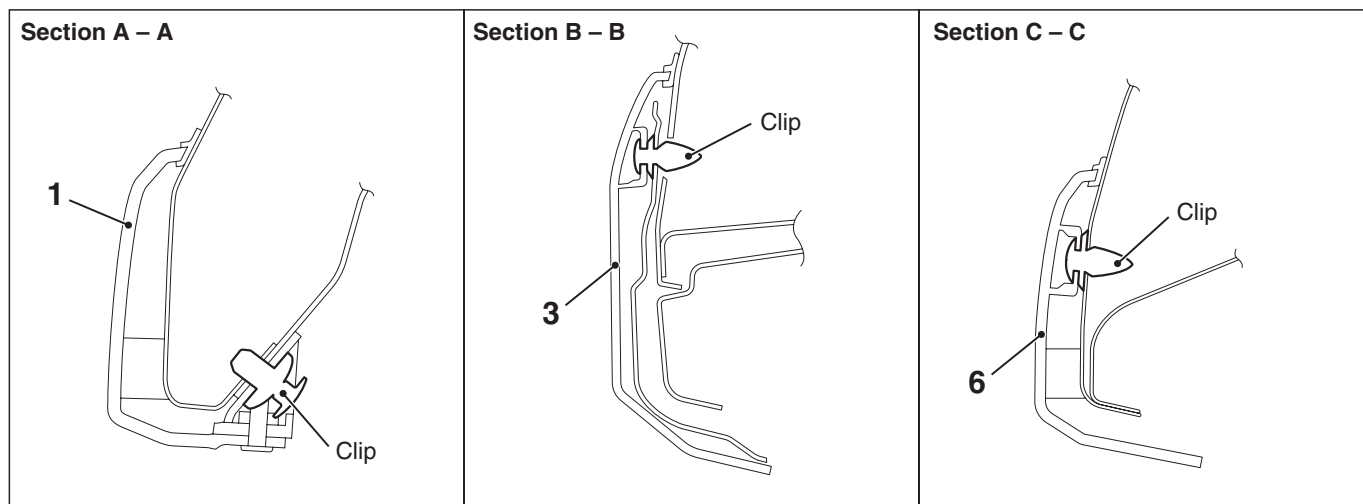
SPECIAL TOOL

M1511000601590

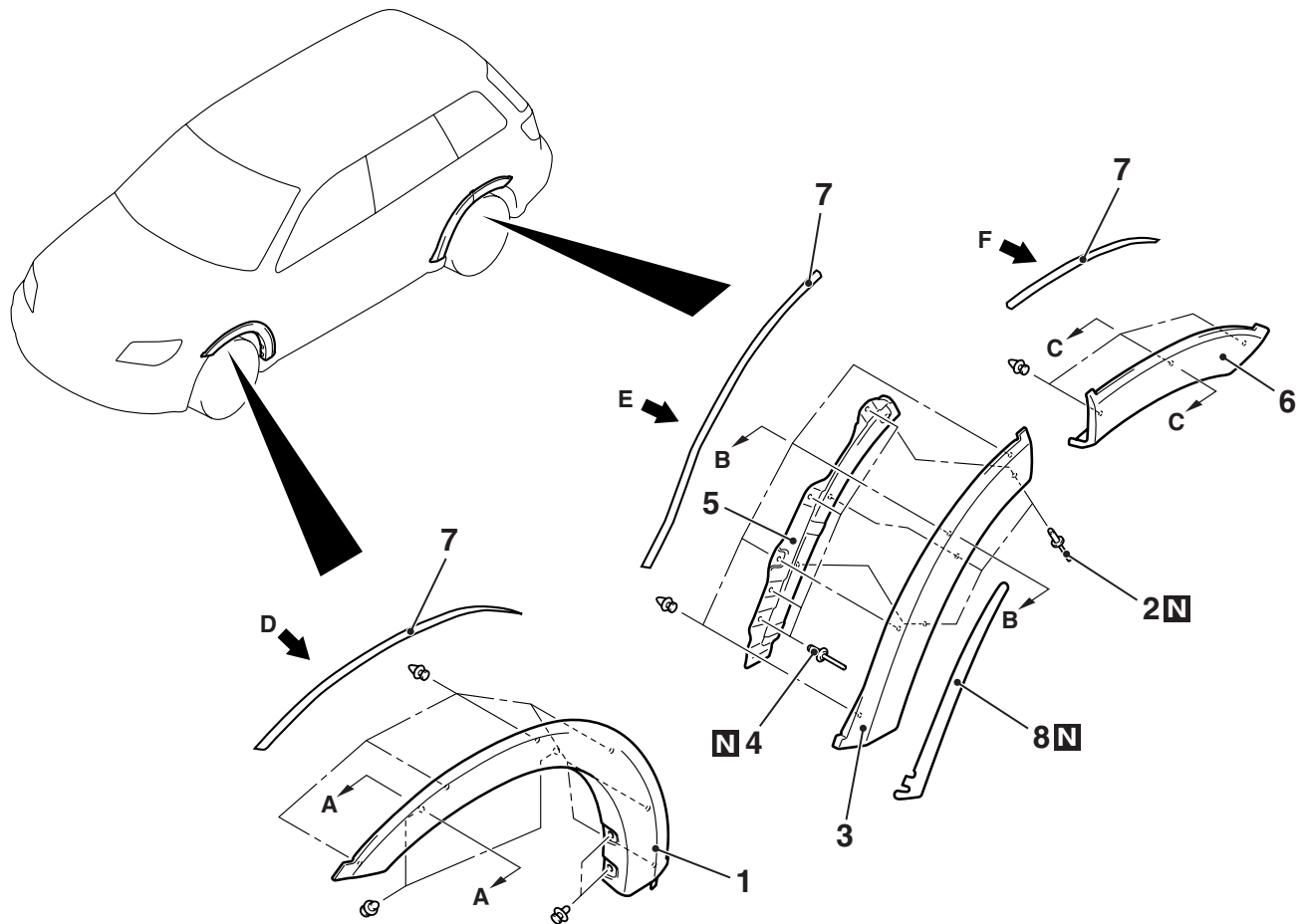
Tool	Number	Name	Application
 MB990784	MB990784	Ornament remover	Removal of overfender

OVERFENDER**REMOVAL AND INSTALLATION**

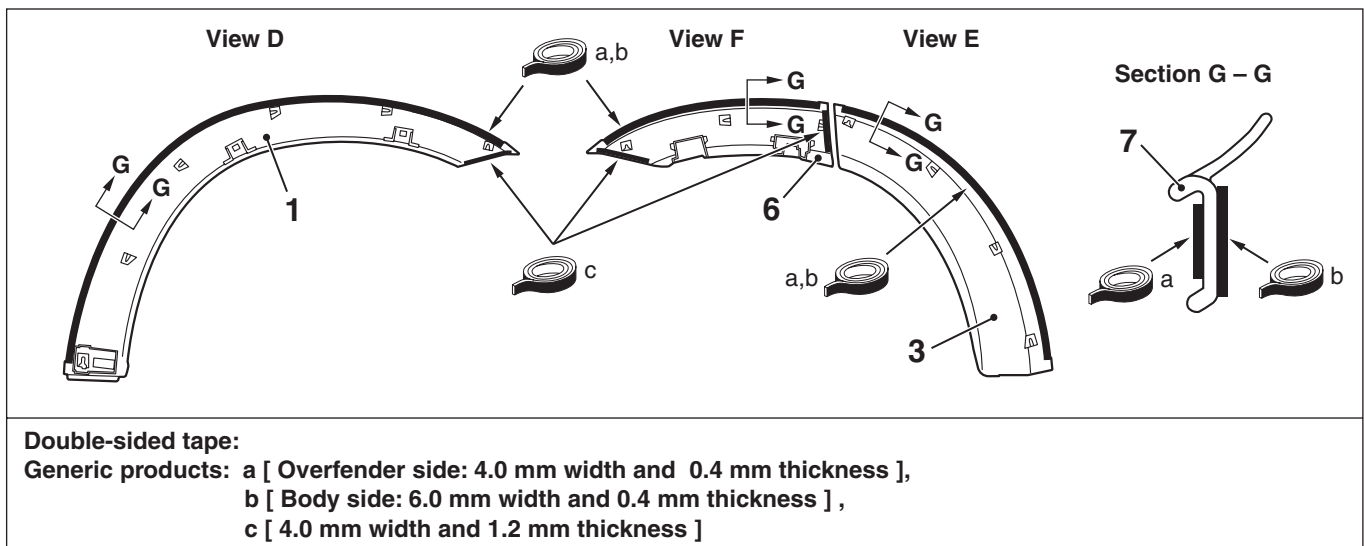
M1511024700071



AC314062AB



AC400578AB



AC314063AB

Removal steps

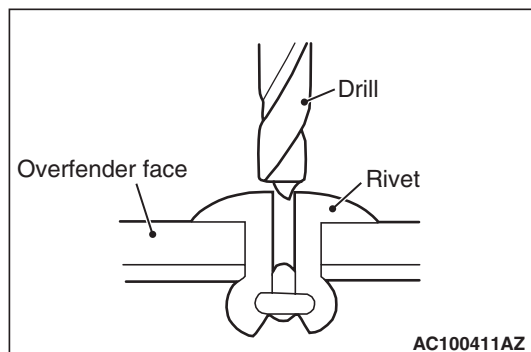
- <<A>> >>A<< 1. Front overfender
 <<A>> >>A<< 2. Rivet B
 <<A>> >>A<< 3. Rear door overfender
 <<A>> >>A<< 4. Rivet A

Removal steps (Continued)

- >>B<< 5. Overfender extension bracket
 >>B<< 6. Rear overfender
 >>B<< 7. Protector
 >>B<< 8. Rear door overfender protect film

REMOVAL SERVICE POINT

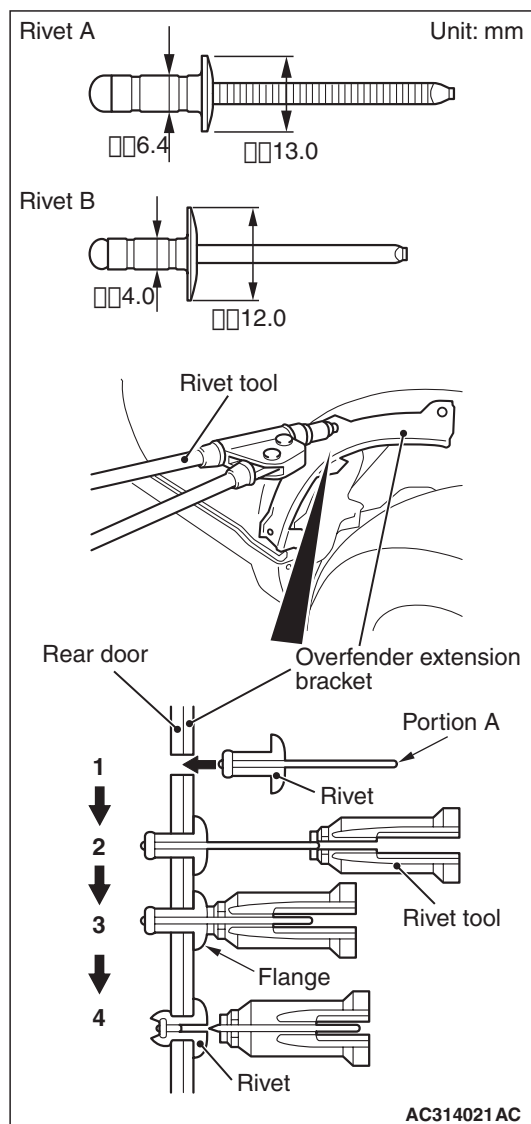
<<A>> RIVETS A / RIVETS B REMOVAL



Use a drill ($\phi 6.5$ mm) to make a hole in the rivet A, and a drill ($\phi 4.0$ mm) to rivet B to break them, and remove the rivets.

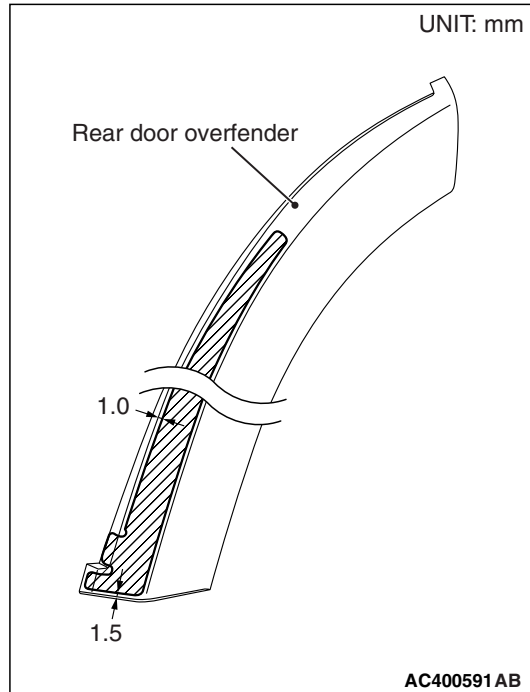
INSTALLATION SERVICE POINTS

>>A<< RIVETS A / RIVETS B INSTALLATION



1. Insert rivets A and rivets B into the overfender extension bracket and rear door.
2. Insert "portion A" of the rivet into the rivet tool.
3. Pressing the flange surface of the rivet, grip the handle of the rivet tool.
4. The thinnest part of "portion A" is cut and the rivet is held in position.

>>B<< PROTECT FILM INSTALLATION



1. INSTALLATION POSITION

CAUTION

- The ambient temperature should be 20 to 38°C. Ensure that the working area is clean.
- If ambient temperature is less than 20°C, heat the protect film and application surface to a temperature of 20 to 30°C.
- Be careful that air bubbles are not formed under the protect film.

2. INSTALLATION PROCEDURE

- (1) Wipe the protect film application surface and clean it with a rag moistened with isopropyl alcohol.
- (2) Remove backing paper from the protect film, and apply the film to the specified position.

REMOVAL AND INSTALLATION SERVICE POINT

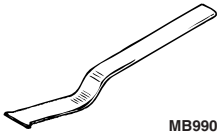
REMOVAL AND INSTALLATION OF DOUBLE-SIDED TAPE

The procedure is the same as removal and installation of side sill garnish double-sided tape. (Refer to [P.51-20.](#))

MOULDINGS

SPECIAL TOOL

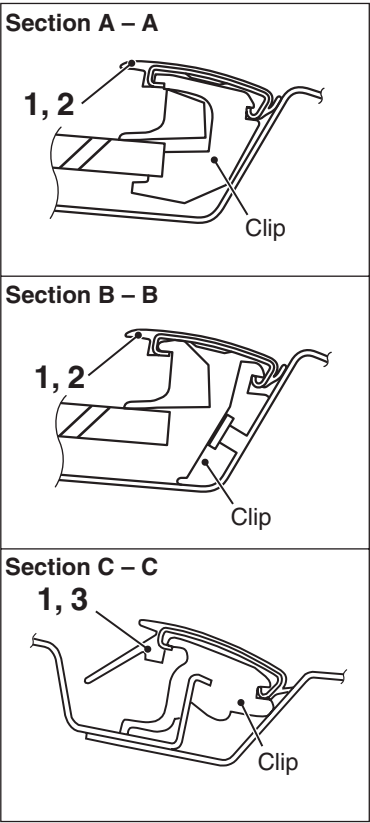
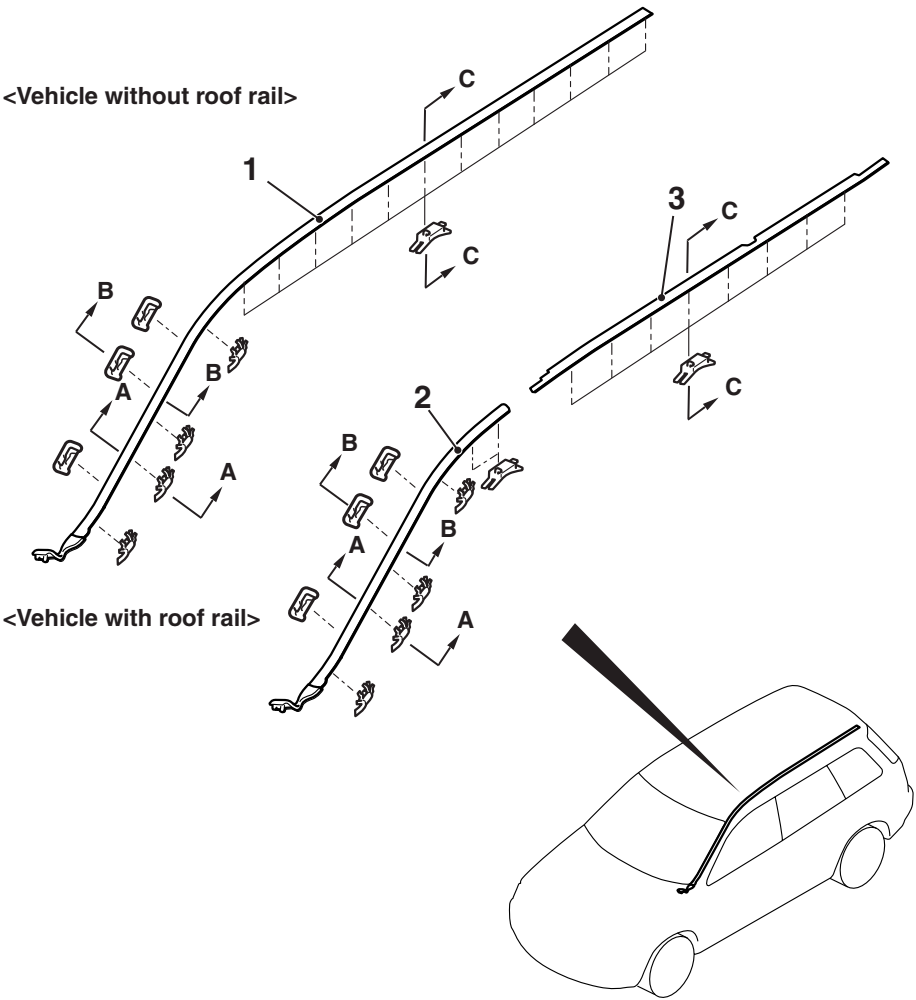
M1511000601006

Tool	Number	Name	Application
	MB990449	Window moulding remover	Removal of drip moulding

MOULDINGS

REMOVAL AND INSTALLATION

M1511004700132



AC301945 AC

Roof drip moulding removal steps
<Vehicles without roof rail>
<<A>> >>A<< 1. Roof drip moulding

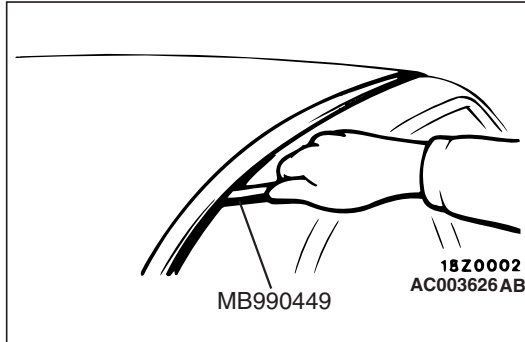
Roof drip moulding removal steps
<Vehicles with roof rail>
• Roof rail (Refer to P.51-30.)
<<A>> >>A<< 2. Front roof drip moulding
<<A>> >>A<< 3. Centre roof drip moulding

REMOVAL SERVICE POINT

<<A>> ROOF DRIP MOULDING REMOVAL

CAUTION

If the moulding has become warped, it should not be reused.



Use special tool MB990449 to pry out the moulding.

INSTALLATION SERVICE POINT

>>A<< ROOF DRIP MOULDING INSTALLATION

Install the clips to the roof drip moulding before installing the moulding to the vehicle body.

GARNISHES

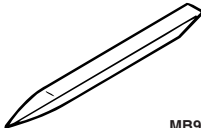
ADHESIVE

M1511000501162

Application	Specified adhesive
Side sill garnish <INVITE>	Double-sided tape: A [5.0 mm width 0.8 mm thickness], B [5.0 mm width 1.2mm thickness]
Side sill garnish <INTENSE, TURBO>	Double-sided tape: [5.0 mm width 1.2mm thickness]

SPECIAL TOOL

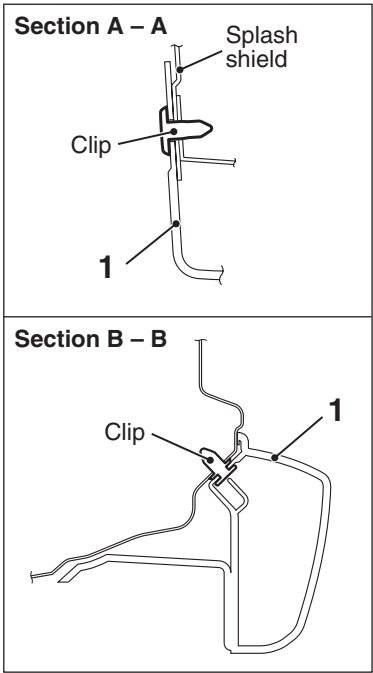
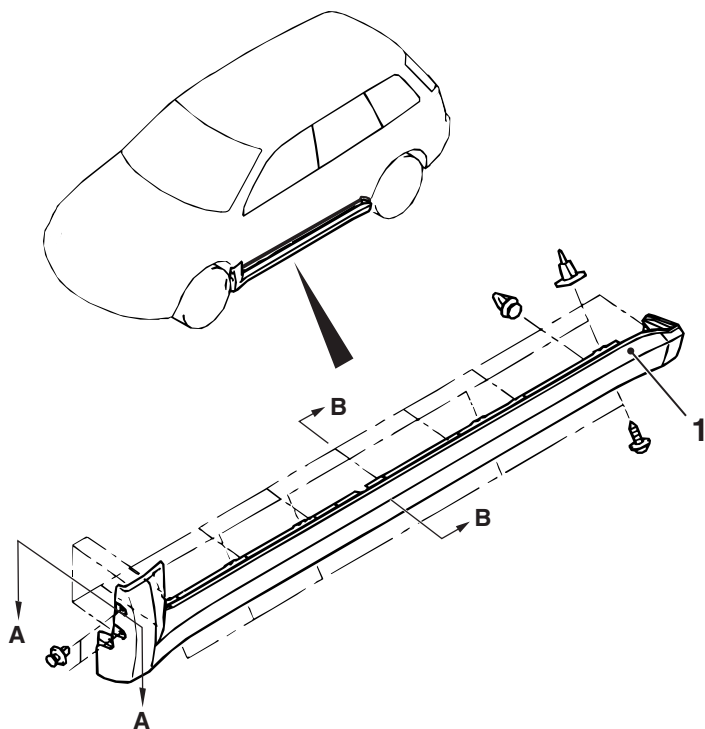
M1511000600995

Tool	Number	Name	Application
 MB990784	MB990784	Ornament remover	Removal of side sill garnish

GARNISHES

SIDE SILL GARNISH REMOVAL AND
INSTALLATION <INVITE>

M1511025200121



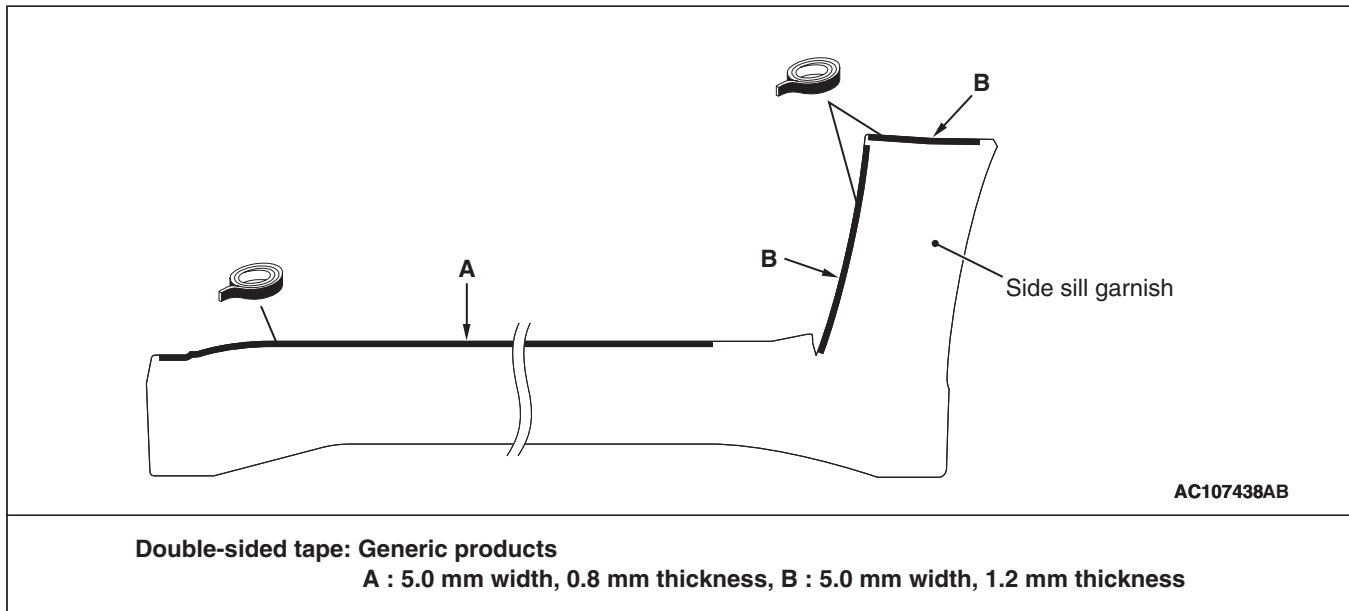
AC301940 AB

Removal steps

- Front deck garnish (Refer to [P.51-33.](#))

<<A>> >>A<< 1. Side sill garnish

DOUBLE-SIDED TAPE AFFIXED LOCATION



REMOVAL SERVICE POINTS

<<A>> SIDE SILL GARNISH REMOVAL

The procedure is the same as removal of side sill garnish <INTENSE, TURBO>. (Refer to [P.51-20.](#))

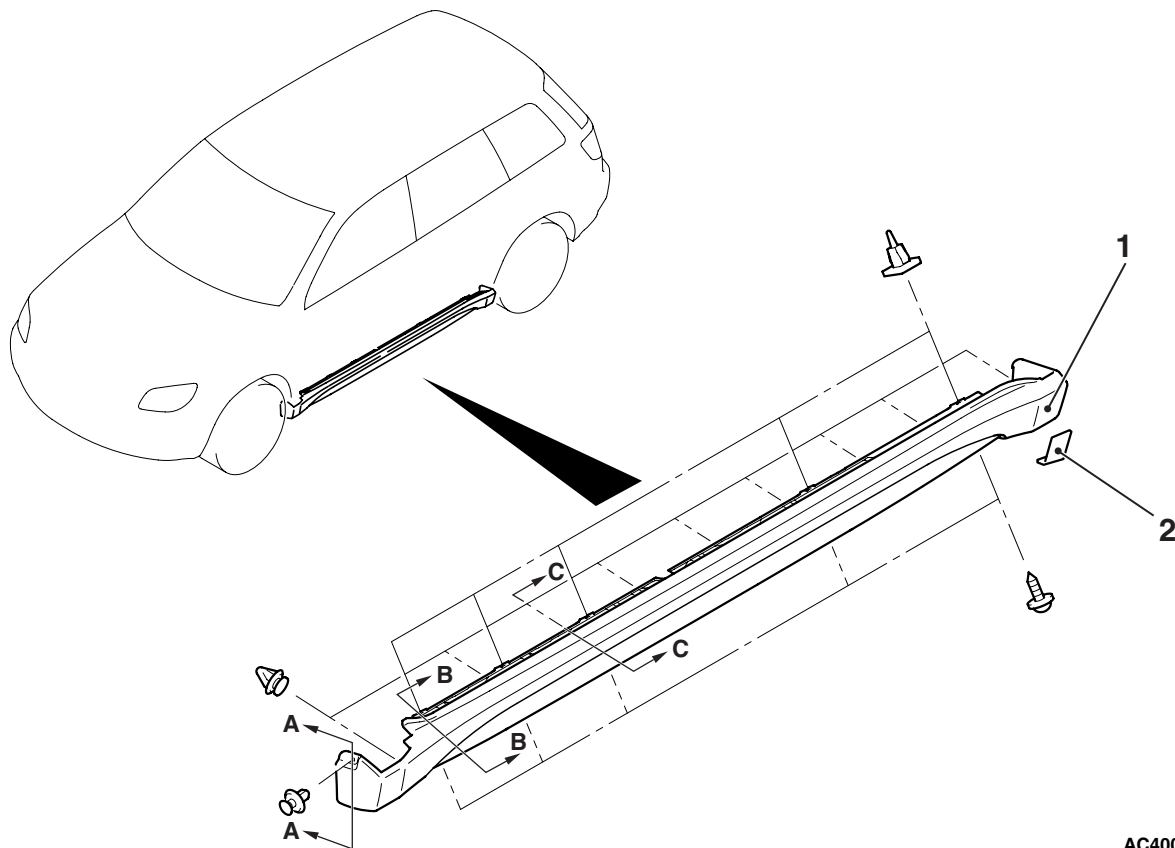
INSTALLATION SERVICE POINTS

>>A<< SIDE SILL GARNISH INSTALLATION

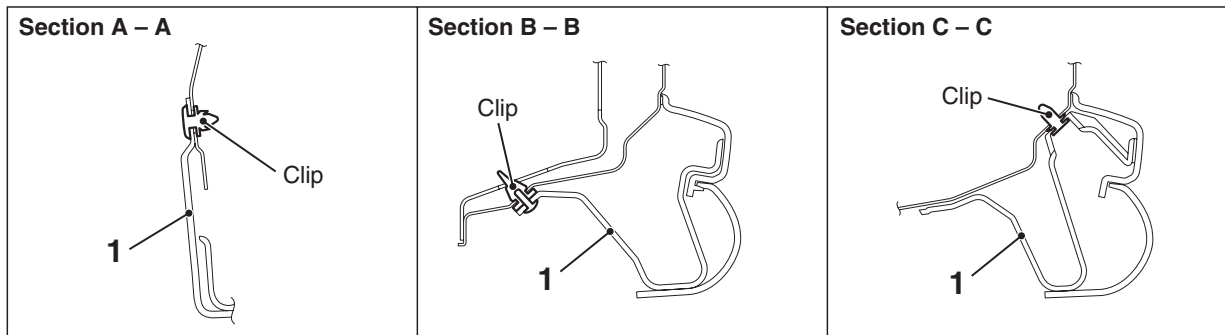
The procedure is the same as installation of side sill garnish <INTENSE, TURBO>. (Refer to [P.51-20.](#))

SIDE SILL GARNISH REMOVAL AND INSTALLATION <INTENSE, TURBO>

M1511025200132



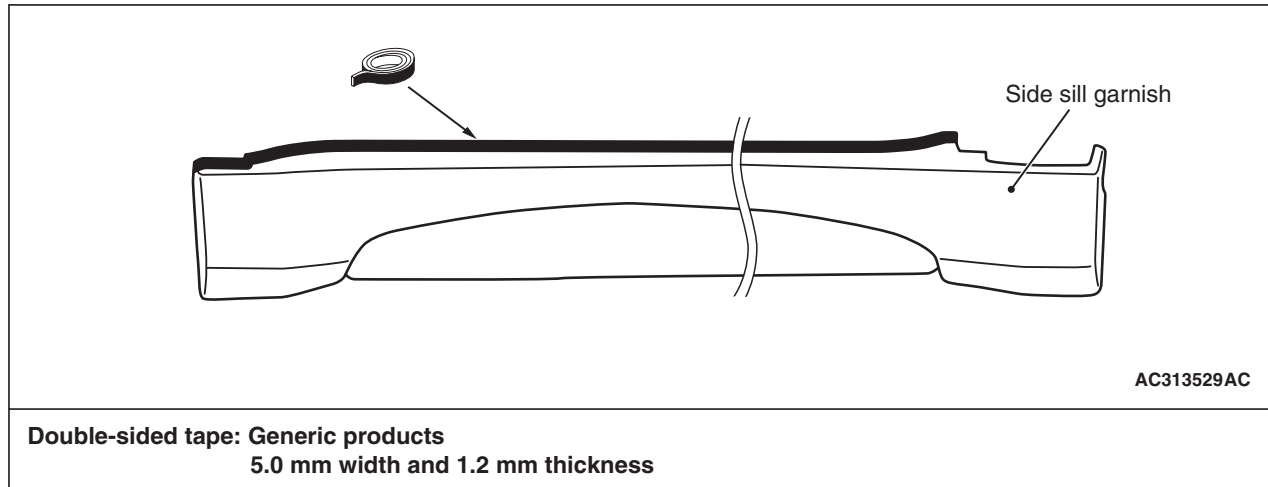
AC400579AB



AC313734AB

- <<A>> >>A<< 1. Side sill garnish
>>B<< 2. Side sill garnish protect film

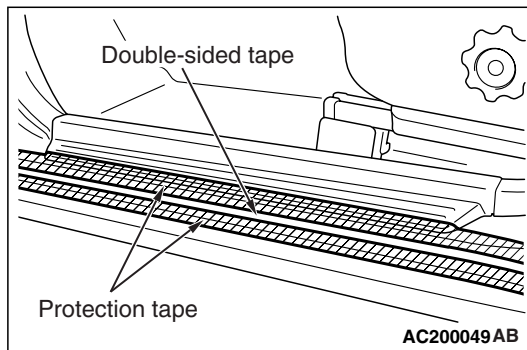
DOUBLE-SIDED TAPE AFFIXED LOCATION



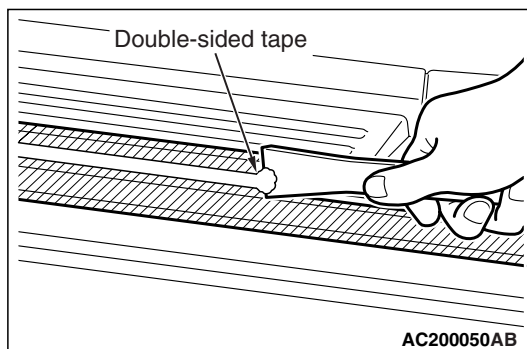
REMOVAL SERVICE POINTS

<<A>> SIDE SILL GARNISH REMOVAL

Gently lift and remove the side sill garnish. If there is any double-sided tape remaining on the side sill garnish, remove according to the following instructions.
<Remove double-sided tape remaining on the body surface>



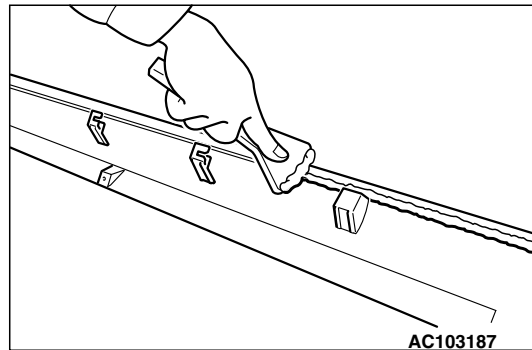
1. Attach protection tape all the way along the edges of the double-sided tape which is still adhering to the body.



2. Scrape off the double-sided tape with a resin spatula as possible.

3. Peel off the protection tape.
4. Wipe the body surface and clean it with a rag moistened with isopropyl alcohol.

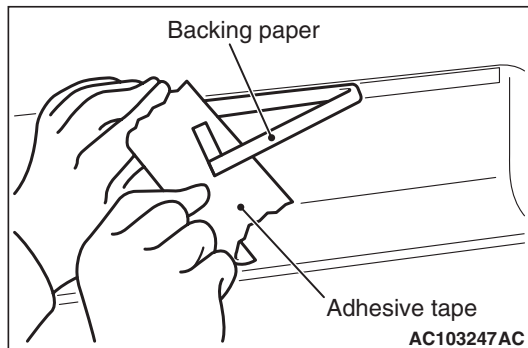
<Remove double-sided tape remaining on the side sill garnish and adhere double-side tape (when re-using side sill garnish)>



1. Scrape off the double-sided tape on the side sill garnish with a resin spatula as possible.
2. Wipe the side sill garnish surface and clean it with a rag moistened with isopropyl alcohol.
3. Remove only a small portion of the residual adhesive.
4. Adhere the double-sided tape as specified on the side sill garnish. (Refer to double-sided tape adherence location.)

INSTALLATION SERVICE POINTS

>>A<< SIDE SILL GARNISH INSTALLATION



1. Tear off the double-sided tape backing paper.

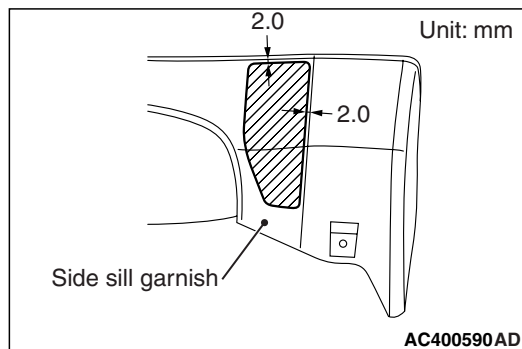
NOTE: If you attach the adhesive tape to the edge of the backing paper, it will be easy to tear off.

2. Install the side sill garnish.

NOTE: If the double-sided tape is difficult to affix in cold temperature, etc., warm the bonding surfaces of the body and side sill garnish to about 40 – 60°C before affixing the tape.

3. Firmly press in the side sill garnish.

>>B<< PROTECT FILM INSTALLATION



1. INSTALLATION POSITION

CAUTION

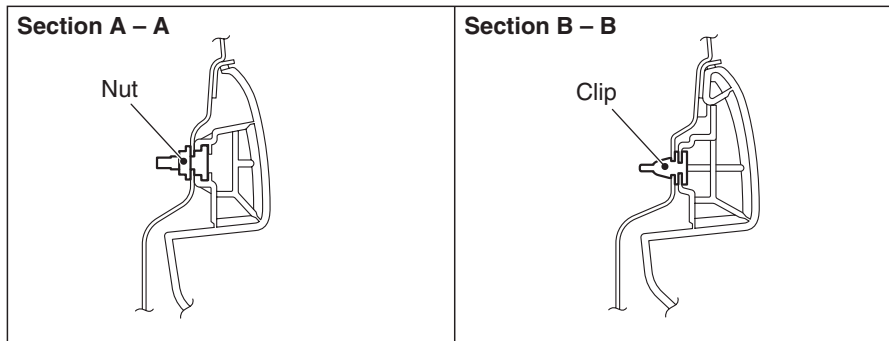
- The ambient temperature should be 20 to 38°C. Ensure that the working area is clean.
- If ambient temperature is less than 20°C, heat the protect film and application surface to a temperature of 20 to 30°C.
- Be careful that air bubbles are not formed under the protect film.

2. INSTALLATION PROCEDURE

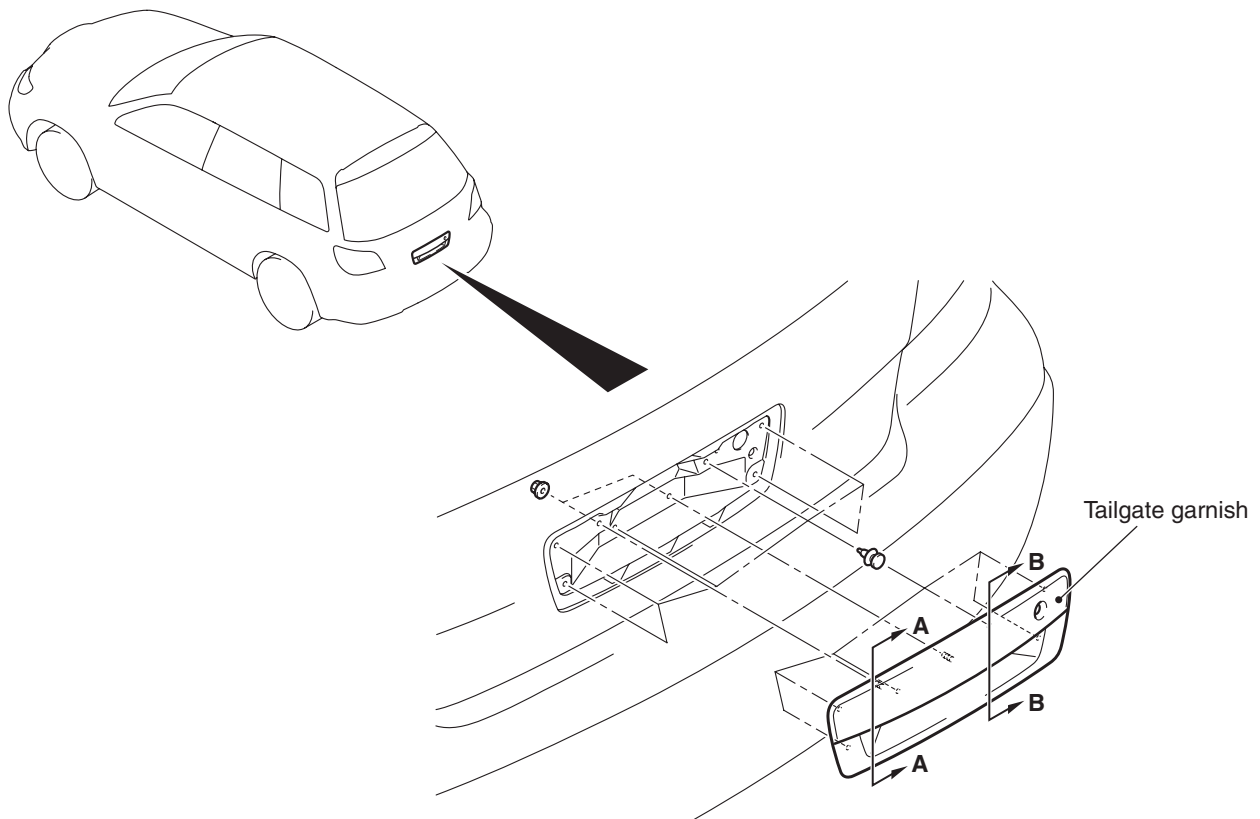
- (1) Wipe the protect film application surface and clean it with a rag moistened with isopropyl alcohol.
- (2) Remove backing paper from the protect film, and apply the film to the specified position.

TAILGATE GARNISH REMOVAL AND INSTALLATION

M1511025000053



AC313504

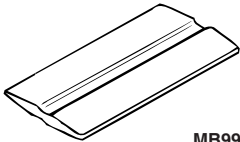


AC313503AB

DOOR SASH TAPE

SPECIAL TOOL

M1511000601608

Tool	Number	Name	Application
 MB990528	MB990528	Stripe tape spatula	Installation of door sash tape

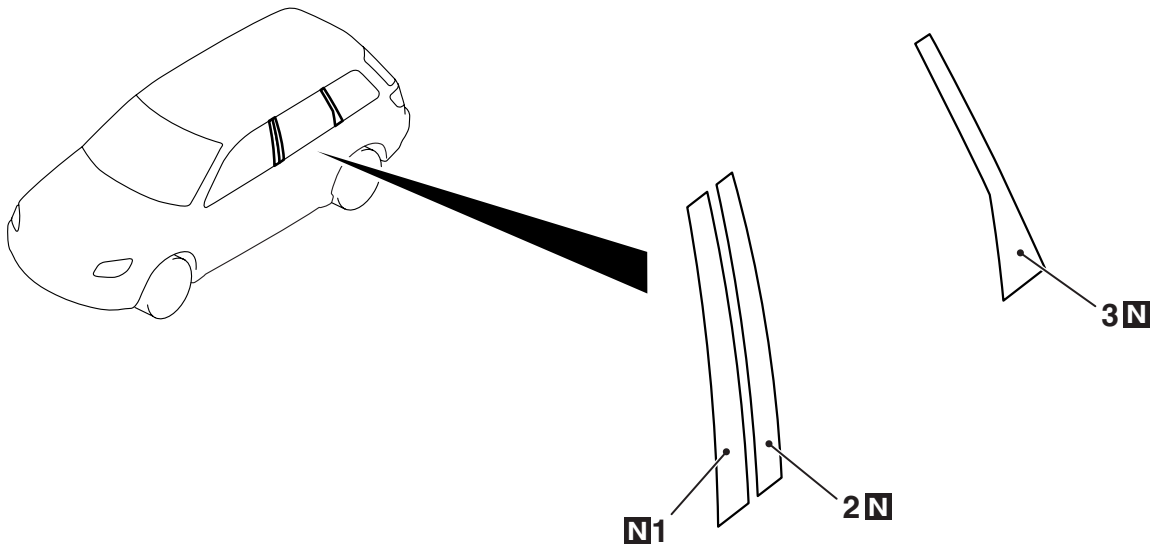
DOOR SASH TAPE

REMOVAL AND INSTALLATION

M1511024100121

Pre-removal and Post-installation Operation

- Door Trim Assembly Removal and Installation (Refer to GROUP 52A Door Trim P.52A-13.)
- Door Beltline Weatherstrip Inner Removal and Installation (Refer to GROUP 42 Window Glass Runchannel and Door Opening Weatherstrip P.42-39.)
- Door Opening Weatherstrip Outer Removal and Installation (Refer to GROUP 42 Window Glass Runchannel and Door Opening Weatherstrip P.42-39.)
- Door Window Glass Runchannel Removal and Installation (Refer to GROUP 42 Window Glass Runchannel and Door Opening Weatherstrip P.42-39.)
- Door Beltline Moulding Removal and Installation (Refer to GROUP 42 Window Glass Runchannel and Door Opening Weatherstrip P.42-39.)



AC313358AB

Front door sash tape removal
step

<<A>> >>A<< 1. Door sash tape rear

Rear door sash tape removal
step

<<A>> >>B<< 2. Door sash tape front
<<A>> >>B<< 3. Door sash tape rear

REMOVAL SERVICE POINT

<<A>> DOOR SASH TAPES REMOVAL

⚠ CAUTION

Pay attention to keep from getting burned by hot door panel or tapes.

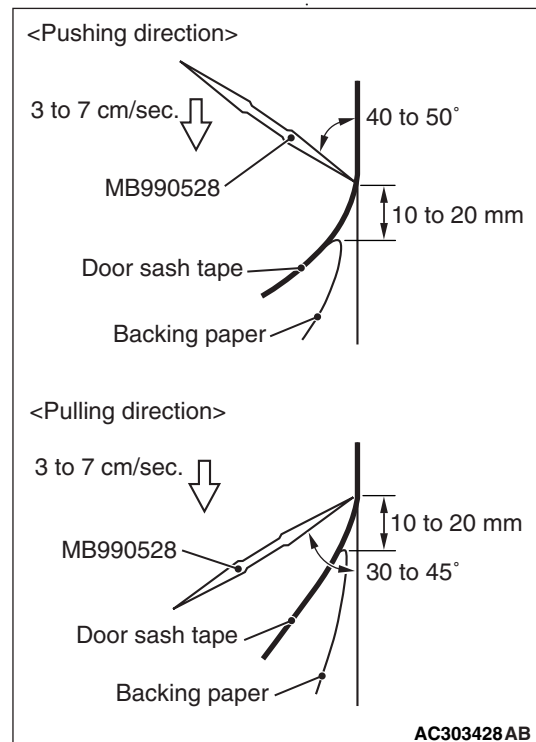
1. Use a hair drier to warm the tape.
2. Peel the tip of the tape with your finger, and then peel off the tape parallel to the application surface.

INSTALLATION SERVICE POINT

>>A<< FRONT DOOR SASH TAPE REAR INSTALLATION

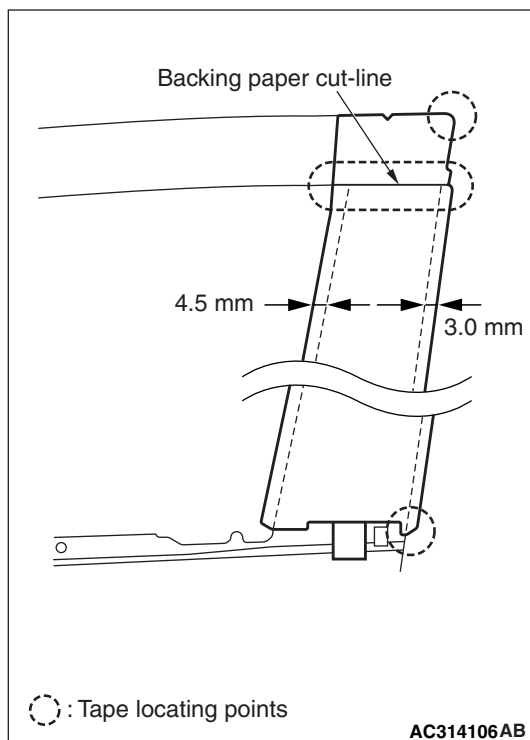
⚠ CAUTION

- The ambient temperature should be 20 to 30°C. Ensure that the working area is clean. Ideally, the tape application should be done at ambient temperature of 25°C.
- If ambient temperature is less than 15°C, heat the tape and application surface to a temperature of 20 to 30°C. If ambient temperature is 35°C or higher, cool down them.
- The adhesive property of the tape is deteriorated at low temperature, so the tape may come adrift easily. Meanwhile, it gets softened at hot temperature.
- When beginning to apply the tape, pay particular attention. If the end of the tape cannot be applied to the specified position with an accuracy of less than 1 mm, it may cause the poor appearance or adhesion.

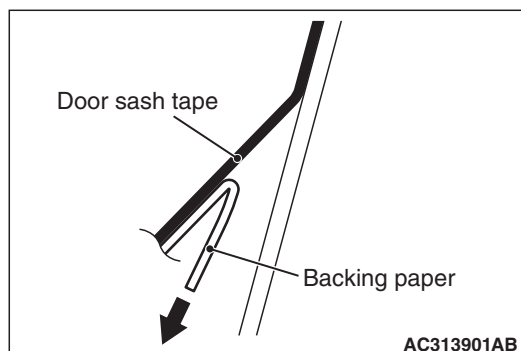


Use the special tool Stripe Tape Spatula (MB990528) to apply the tape with a steady pace and pressure. If you do not apply the tape with a steady pace or pressure, or abort the application, a shallow groove (lateral groove called as "Shock line") may be present on the tape surface. Meanwhile, if you apply it too quickly, air bubbles may be formed under the tape.

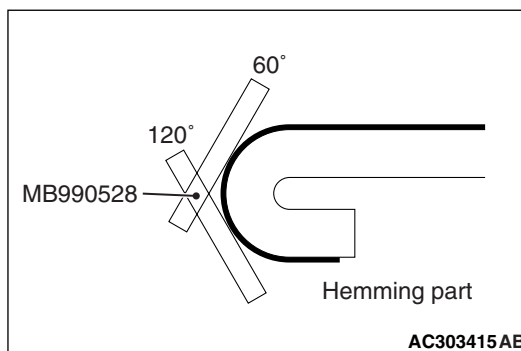
1. Wrap a soft cloth (synthetic fibre) around the tip of the special tool.
2. Use isopropyl alcohol to degrease the tape application surface.
3. Wipe away dirt from the tape.
4. Apply the front door sash tape rear according to the procedure below.



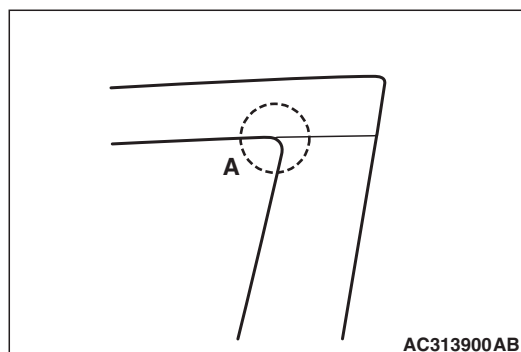
- (1) Align the tape with the upper and lower specified position.
- (2) Peel off the backing paper of the upper side by the cut line, and apply the top of tape temporarily.



- (3) Peel off the backing paper under the tape by half of all tape.
- (4) Press the tape by a special tool Stripe Tape Spatula (MB990528).
- (5) While peeling off the remaining backing paper from up to down, press the tape by a special tool (MB990528).
- (6) Peel off the application tape from up to down towards 180°.



- (7) Press the folded area of the tape end at 3 steps (60°, 120°, and holding), while rolling it toward the vehicle inside.

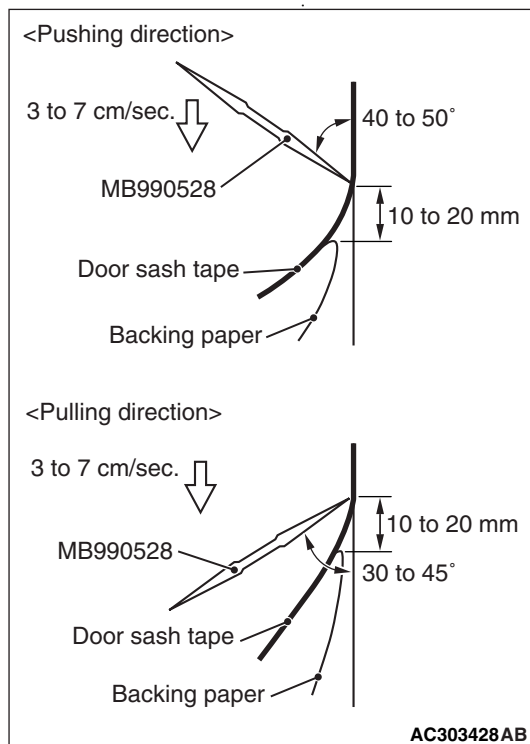


- (8) Finally, press the A area strongly by finger and roll the tape inside thoroughly (there are three slits on the tape).

>>B<< REAR DOOR SASH TAPE FRONT/REAR INSTALLATION

⚠ CAUTION

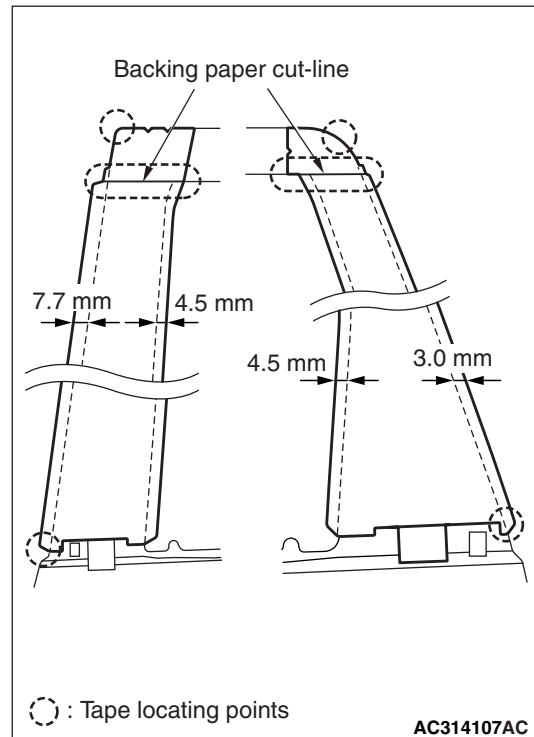
- The ambient temperature should be 20 to 30°C. Ensure that the working area is clean. Ideally, the tape application should be done at ambient temperature of 25°C.
- If ambient temperature is less than 15°C, heat the tape and application surface to a temperature of 20 to 30°C. If ambient temperature is 35°C or higher, cool down them.
- The adhesive property of the tape is deteriorated at low temperature, so the tape may come adrift easily. Meanwhile, it gets softened at hot temperature.
- When beginning to apply the tape, pay particular attention. If the end of the tape cannot be applied to the specified position with an accuracy of less than 1 mm, it may cause the poor appearance or adhesion.



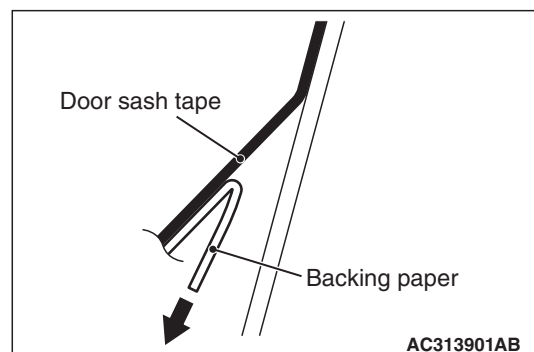
Use the special tool **Stripe Tape Spatula (MB990528)** to apply the tape with a steady pace and pressure. If you do not apply the tape with a steady pace or pressure, or abort the application, a shallow groove (lateral groove called as "Shock line") may be present on the tape surface. Meanwhile, if you apply it too quickly, air bubbles may be formed under the tape.

1. Wrap a soft cloth (synthetic fibre) around the tip of the special tool.

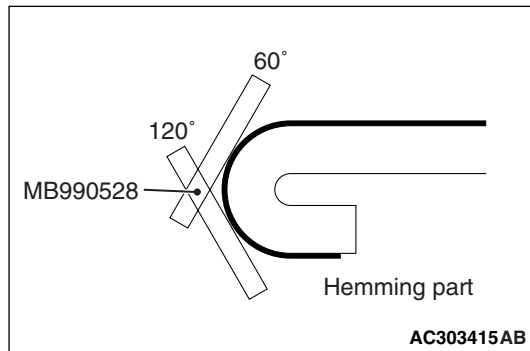
2. Use isopropyl alcohol to degrease the tape application surface.
3. Wipe away dirt from the tape.
4. Apply the rear door sash tape front/rear according to the procedure below.



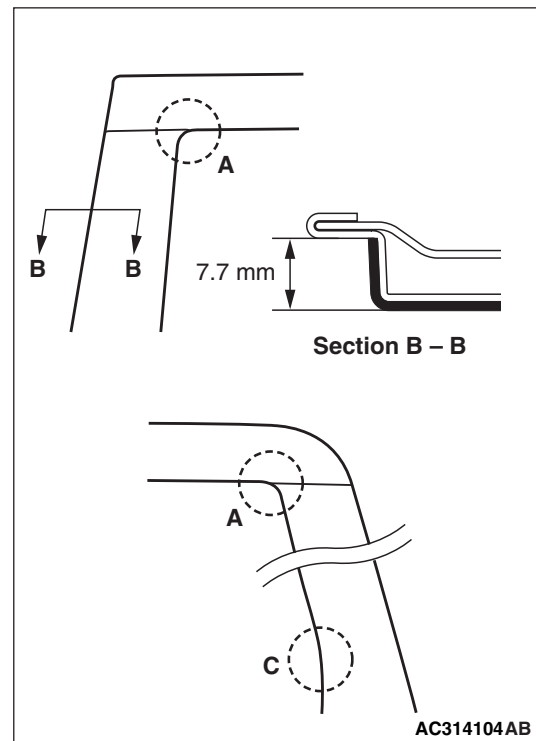
- (1) Align the tape with the upper and lower specified position.
- (2) Peel off the backing paper of the upper side by the cut line, and apply the top of tape temporarily.



- (3) Peel off the backing paper under the tape by half of all tape.
- (4) Press the tape by a special tool Stripe Tape Spatula (MB990528).
- (5) While peeling off the remaining backing paper from up to down, press the tape by a special tool (MB990528).
- (6) Peel off the application tape from up to down towards 180°.



- (7) Press the folded area of the tape end at 3 steps (60°, 120°, and holding), while rolling it toward the vehicle inside.



- (8) Finally, press the A to C areas strongly by finger and roll the tape inside thoroughly.

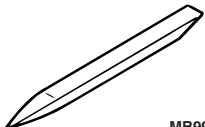
NOTE:

- In the A area, there are three slits on the tape.
- In the B area, press the tape at stepped section downwards thoroughly.
- In the C area, press the tape at R section thoroughly.

TAILGATE SPOILER

SPECIAL TOOL

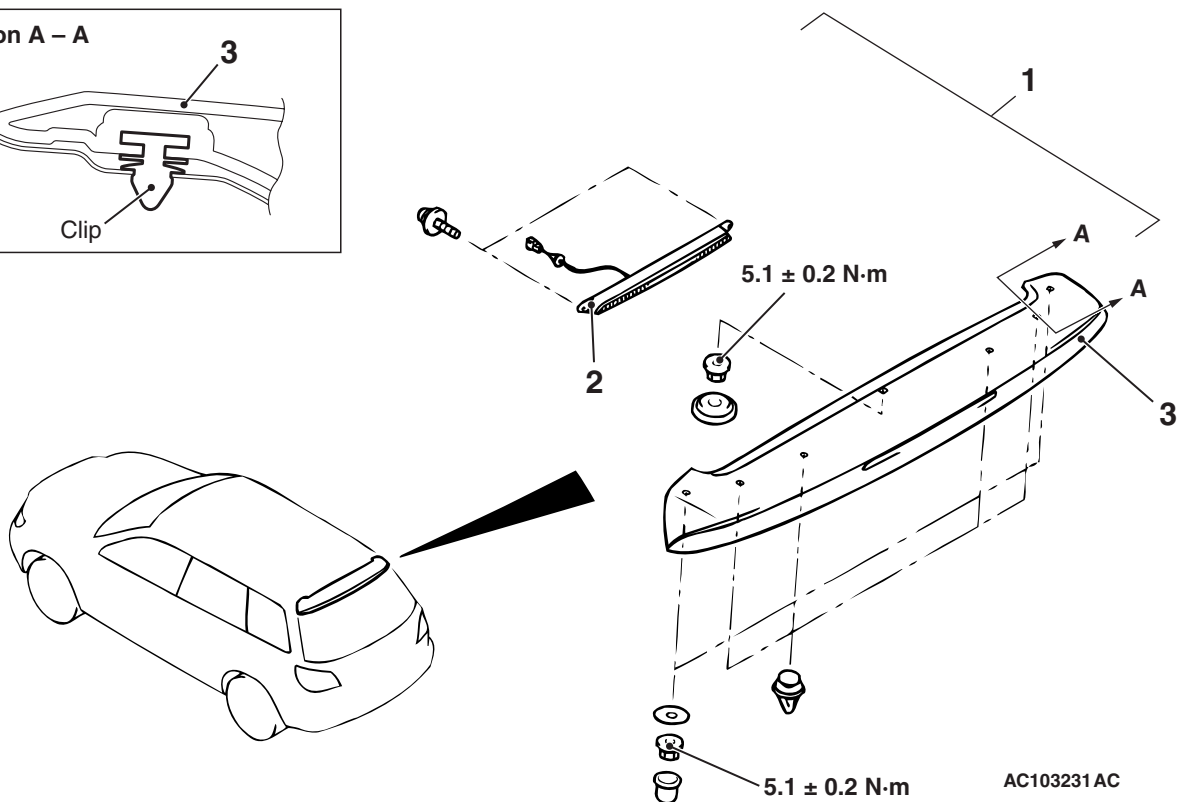
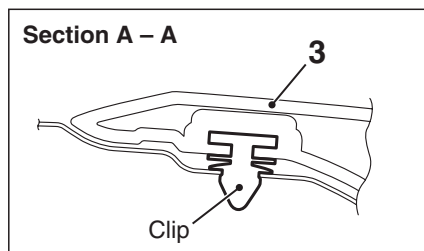
M1511000601017

Tool	Number	Name	Application
 MB990784	MB990784	Ornament remover	Removal of tailgate spoiler

TAILGATE SPOILER

REMOVAL AND INSTALLATION

M1511020800043



Removal steps

- Tailgate upper trim (Refer to GROUP 52A, Tailgate trim [P.52A-17.](#))
- High-mounted stop lamp connector connection

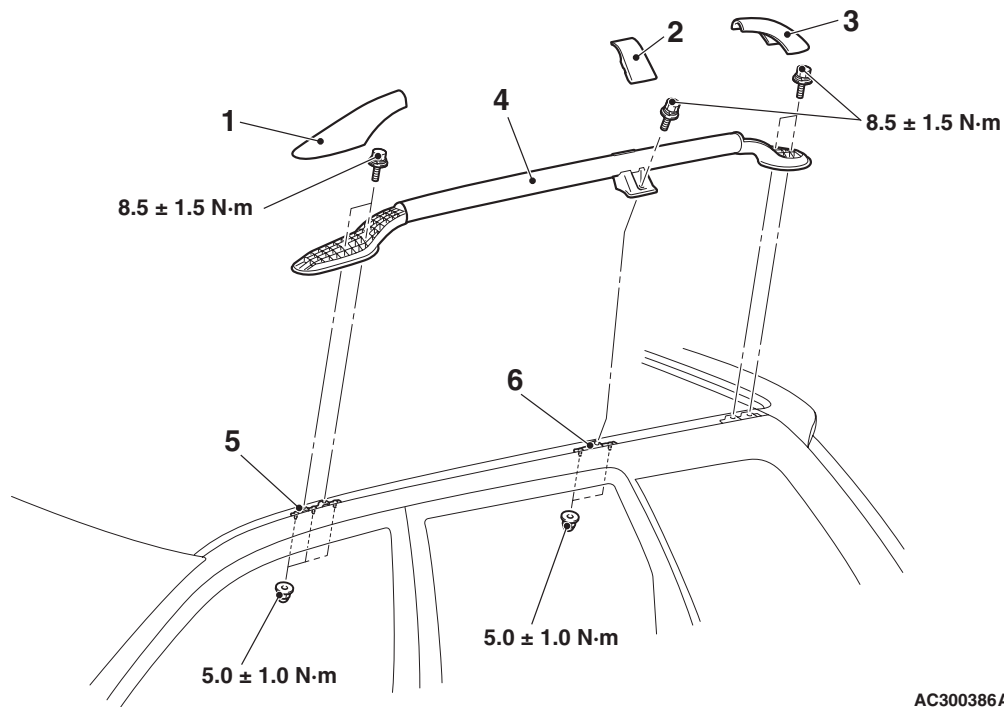
Removal steps (Continued)

- Rear washer hose connection
1. Tailgate spoiler assembly
 2. High-mounted stop lamp assembly
 3. Tailgate spoiler

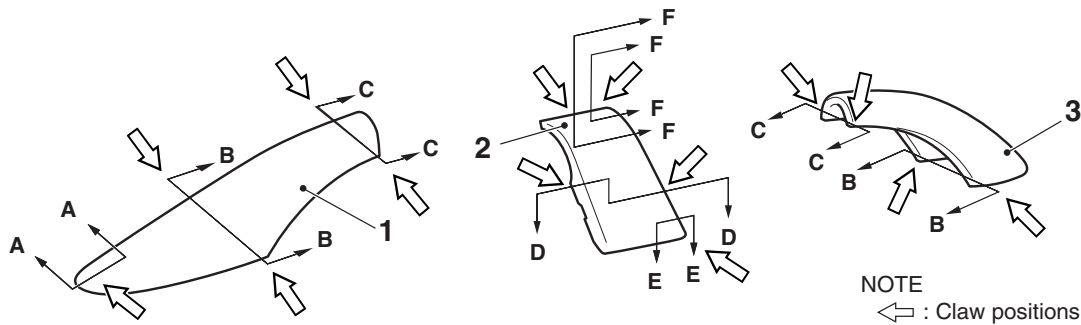
ROOF RAIL

REMOVAL AND INSTALLATION

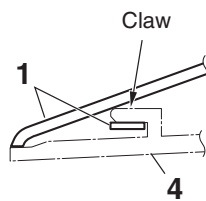
M1511016600165



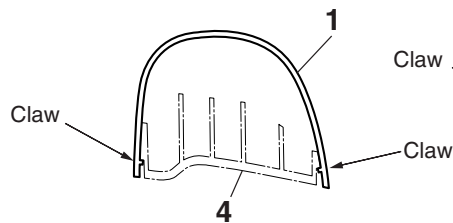
AC300386AC



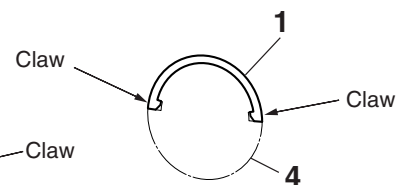
Section A – A



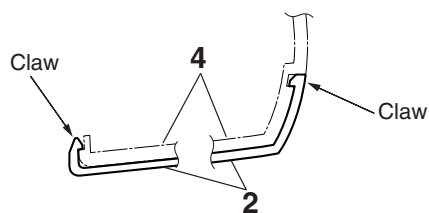
Section B – B



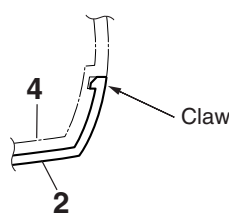
Section C – C



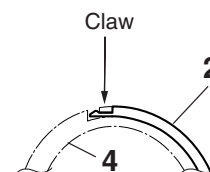
Section D – D



Section E – E



Section F – F



Removal steps

1. Front roof rail cover
2. Centre roof rail cover
3. Rear roof rail cover

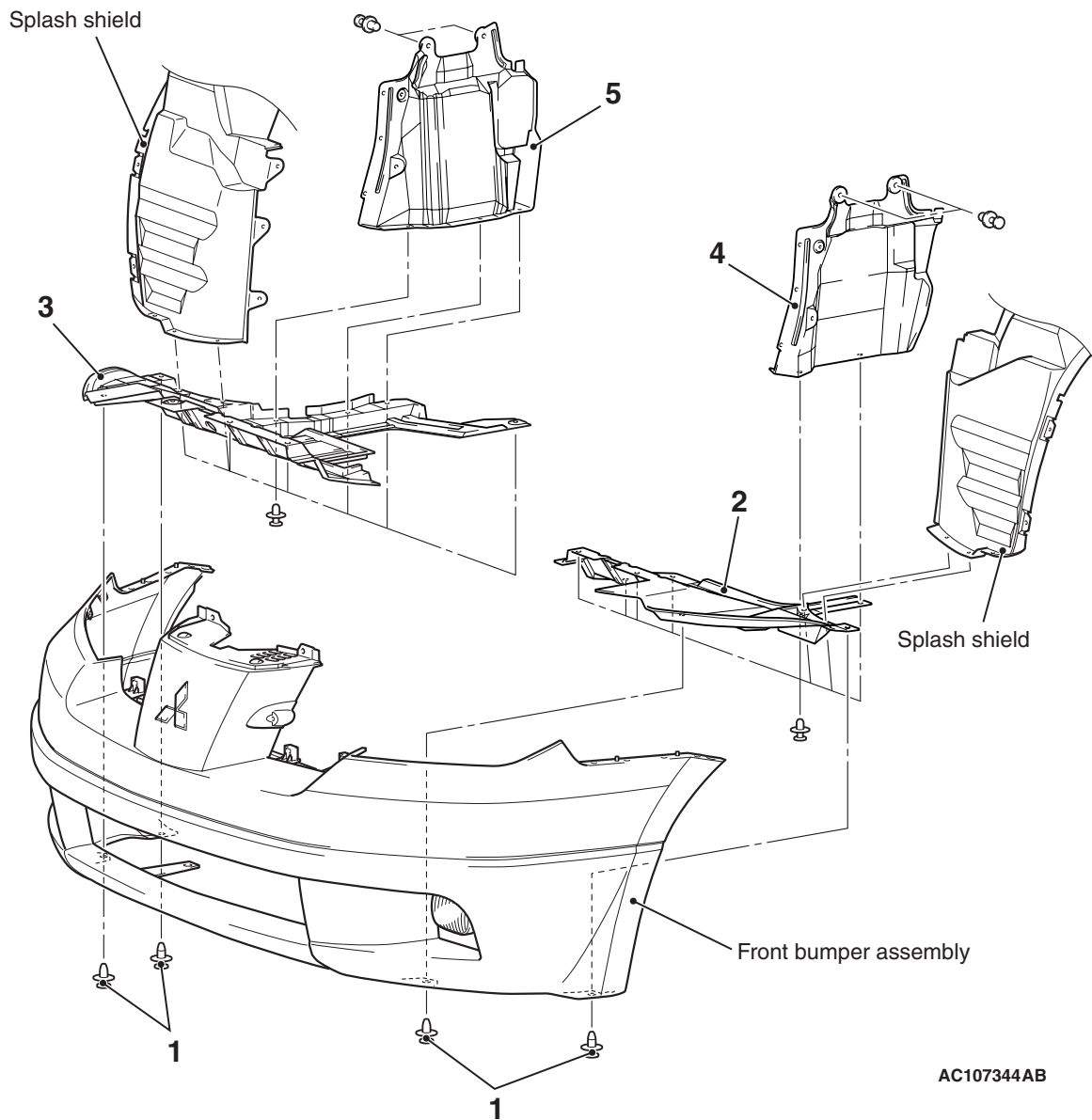
Removal steps (Continued)

4. Roof rail
5. Front roof rail bracket
6. Centre roof rail bracket

UNDER COVER

REMOVAL AND INSTALLATION

M1511019600108



AC107344AB

Removal steps

1. Front bumper assembly mounting clips
2. Front under cover (LH)

Removal steps (Continued)

3. Front under cover (RH)
4. Side under cover (LH)
5. Side under cover (RH)

WINDSHIELD WIPER AND WASHER

SERVICE SPECIFICATION

M1511000300392

Item	Standard value
Stop position of the windshield wiper arm/blade assembly (Distance between the edge of the wiper blade and the end of the deck garnish) mm	Driver's side: 35 ± 5 Passenger's side: 25 ± 5

TROUBLESHOOTING

M1511000700431

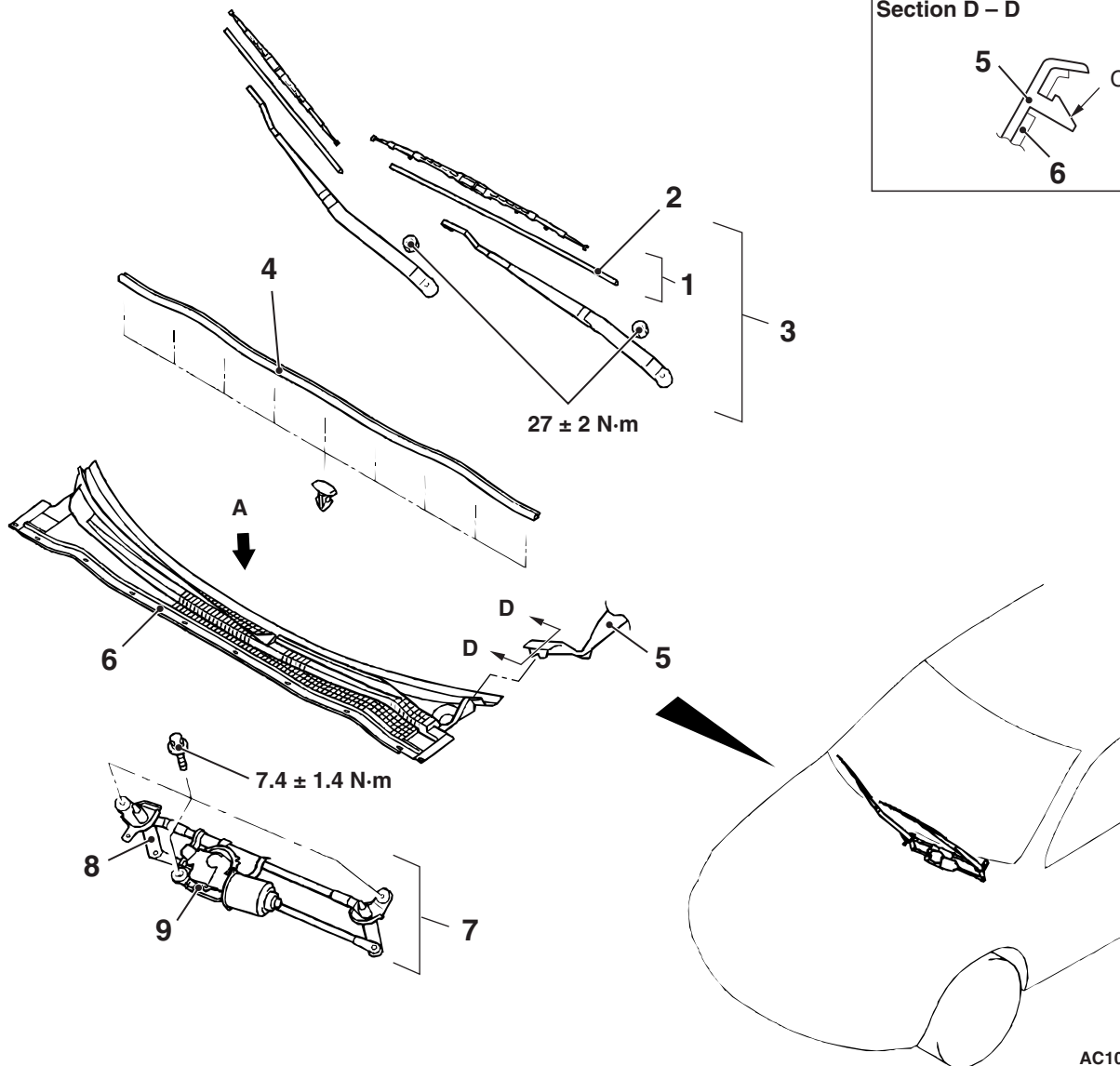
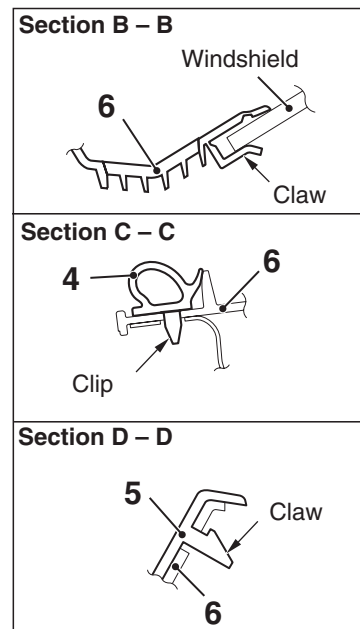
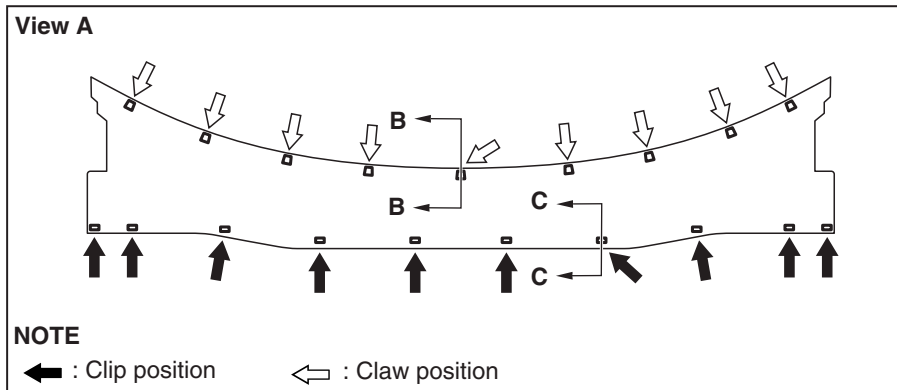
The windshield wiper and washer are controlled by the smart wiring system (SWS). For troubleshooting, refer to GROUP 54B, Troubleshooting [P.54B-33](#) or GROUP 54C, Troubleshooting [P.54C-21](#).

NOTE: Even when the ETACS-ECU has failed, the windshield wiper can work at low speed in fail-safe mode. (Normally, the windshield wiper operates when the ignition switch is at the "ACC" or "ON" position. But, if it enters the fail-safe mode, the wiper can operate only when the ignition switch is at the "ON" position).

WINDSHIELD WIPER

REMOVAL AND INSTALLATION

M1511007900180



Wiper blade removal steps

1. Wiper blade assembly
- >>B<< 2. Wiper blade

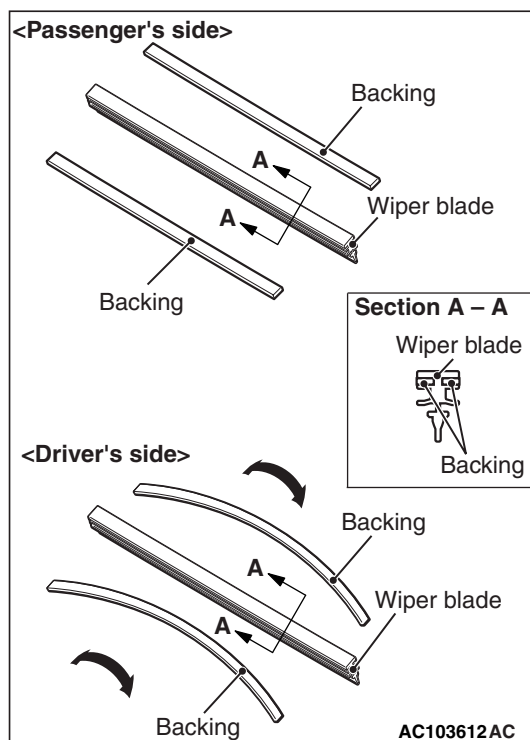
Windshield wiper motor and link assembly removal steps

- >>A<< 3. Wiper arm and blade assembly
4. Hood weather strip

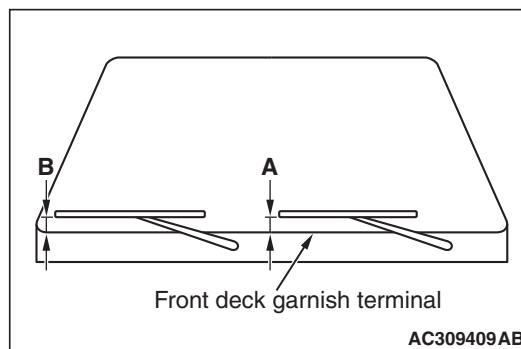
Windshield wiper motor and link assembly removal steps (Continued)

5. Roof drip moulding and front deck garnish connection
6. Front deck garnish
7. Windshield wiper motor and link assembly
8. Link assembly
9. Windshield wiper motor assembly

NOTE: For removal and installation of the wiper and washer switch, refer to GROUP 54A, Column switch P.54A-86.

INSTALLATION SERVICE POINTS**>>A<< WIPER BLADE INSTALLATION****CAUTION**

For good windshield wiper wiping performance, use a passenger-side windshield wiper without an curve in the backing of the wiper blade. The windshield wiper on the driver's side should be a wiper blade with a curved backing.

>>B<< WIPER BLADE ASSEMBLY INSTALLATION

Install the wiper blade at the specified position (standard value).

Standard value:

Driver's side (A): 35 ± 5 mm

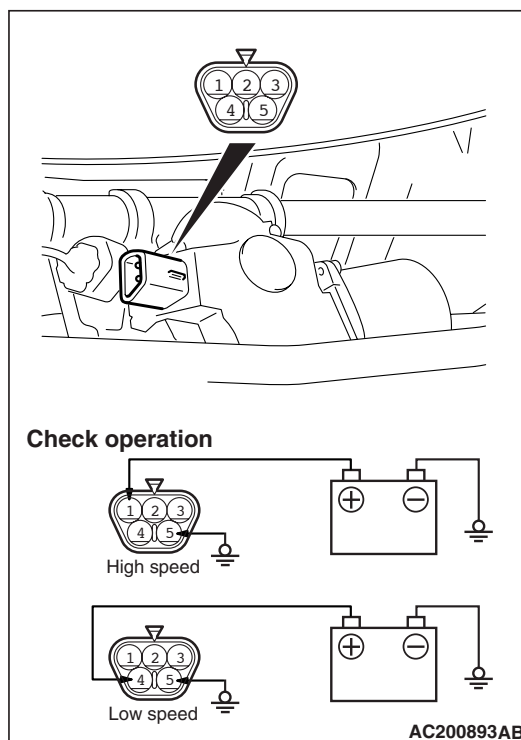
Passenger's side (B): 25 ± 5 mm

INSPECTION

M1511008000306

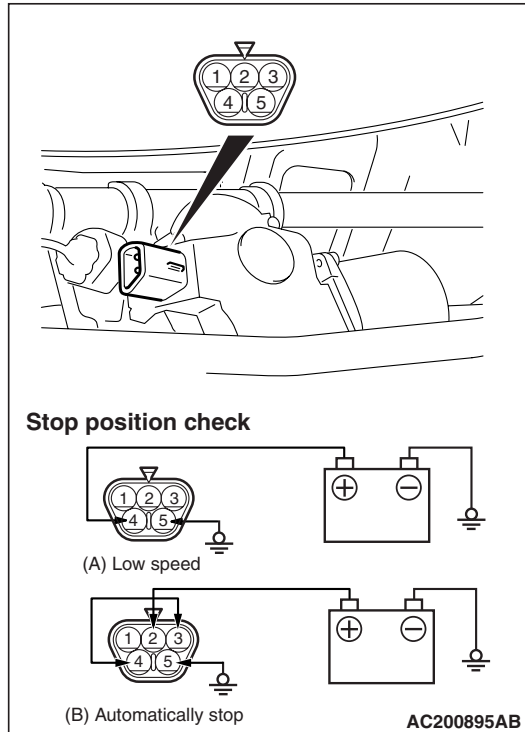
WINDSHIELD WIPER MOTOR CHECK

Inspect the windshield wiper motor by removing the harness connector with the motor attached to the vehicle.

Wiper motor at low-speed and high-speed operation

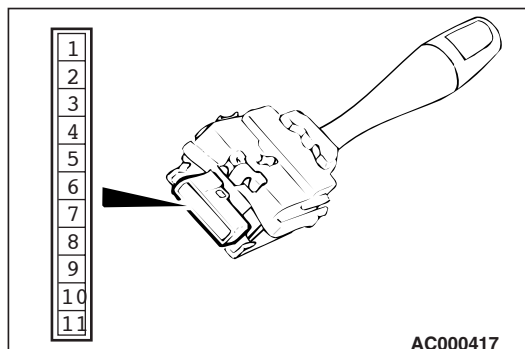
Connect the battery to the windshield wiper motor to inspect the operation of motor rotation in low or high speed.

Wiper motor at stop position operation



1. Connect the battery to the windshield wiper motor as shown in the illustration (A).
2. Run the windshield wiper motor at low speed, then disconnect the battery in the middle of the motor turning and check to see that the motor stops.
3. As shown in the illustration (B), connect the terminals of the windshield wiper motor connectors.
4. Check to see that the windshield wiper motor runs at low speed and then stops at the automatic stop position.

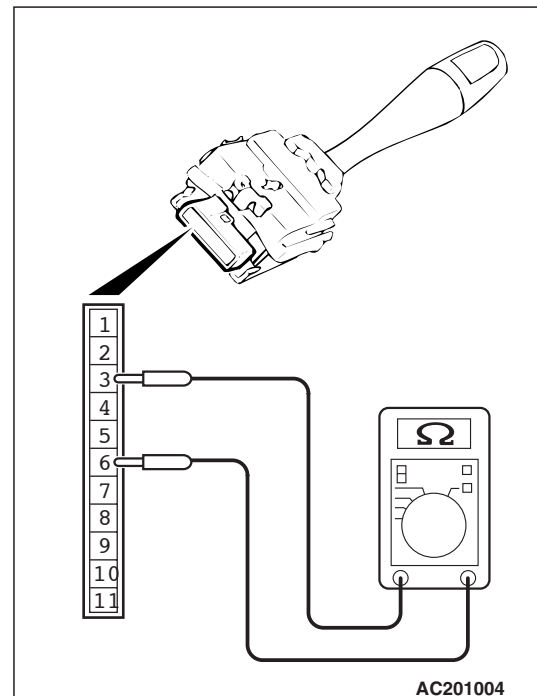
WINDSHIELD WIPER SWITCH CHECK



Check continuity between the switch terminals.

Switch position	Tester connection	Specified condition
OFF	6 – 11, 6 – 10, 6 – 9, 6 – 8	Open circuit
Windshield mist wiper switch	6 – 11	Less than 2 ohms
Windshield intermittent wiper switch	6 – 10	
Windshield low-speed wiper switch	6 – 9	
Windshield high-speed wiper switch	6 – 8	

WINDSHIELD INTERMITTENT WIPER VOLUME CHECK



Check that the resistance varies between 0 and 1 when the windshield intermittent volume is turned from FAST to SLOW by after measuring resistance between connector terminals 3 and 6 at the column switch.

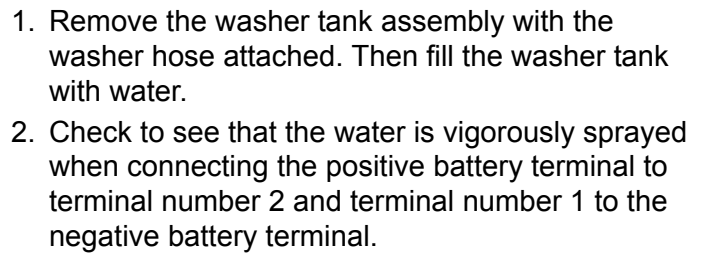
REMOVAL AND INSTALLATION

- Front under cover (RH) (Refer to P.51-31.)
2. Front splash shield (RH) mounting clip
- Connection of front washer hose and rear washer hose
4. Washer tank assembly
5. Windshield washer motor
- Head lamp washer motor (Refer to P.51-52.)
6. Rear washer motor
7. Washer tank

INSPECTION

- M1511008300330

NOTE: For removal and installation of the wiper and washer switch, refer to GROUP 54A, Column switch P.54A-86.



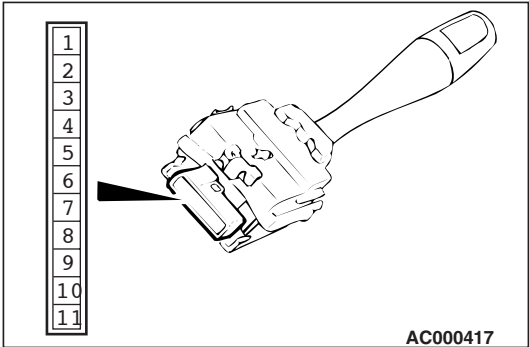
Move the nozzle to adjust the position so that the spray is in the area shown in the illustration.

Technical drawing of a car windshield showing dimensions and washer nozzle locations. The drawing includes the following labels and dimensions:

- Windshield washer nozzle perpendicular** (Two locations, top left and top right)
- Windshield washer nozzle** (Bottom center)
- Windshield ceramic end line** (Left side)
- Dimensions:**
 - Top left nozzle: 50 (width), 120 (height), 285 (total height from bottom left corner)
 - Top right nozzle: 50 (width), 120 (height), 310 (total height from bottom right corner)
 - Bottom left nozzle: 50 (width), 60 (height), 120 (total height from bottom left corner)
 - Bottom right nozzle: 50 (width), 70 (height), 130 (total height from bottom right corner)
 - Bottom center nozzle: 600 (width)
 - Bottom left corner: 70 (width), 90 (height)
 - Bottom right corner: 120 (width), 110 (height)
- Orientation:** <Right> (Left side), <Left> (Right side)

AC107158AD

WINDSHIELD WASHER SWITCH CHECK



Check continuity between the switch terminals.

Switch position	Tester connection	Specified condition
OFF	6 – 7	Open circuit
Windshield washer switch	6 – 7	Less than 2 ohms

REAR WIPER AND WASHER

SERVICE SPECIFICATION

M1511000300303

Item	Standard value
Rear wiper arm and blade assembly stop position (Distance from end wiper blade and the end of tailgate galss) mm	30 ± 5

TROUBLESHOOTING

M1511000700442

The rear wiper and washer are controlled by the smart wiring system (SWS). For troubleshooting, refer to GROUP 54B, Troubleshooting [P.54B-33](#) or GROUP 54C, Troubleshooting [P.54C-21](#).

ON-VEHICLE SERVICE

CHECK OF REAR WIPER OPERATION WHEN SELECTOR LEVER IS AT THE "R" POSITION

M1511022100040

1. When the selector lever is moved to the "R" position with the rear wiper switch at the "INT" position, the wiper should operate twice or three times at low speed after approximately one second.
2. If not, troubleshoot the system (Refer to GROUP 54B, Troubleshooting [P.54B-33](#) or GROUP 54C, Troubleshooting [P.54C-21](#)).

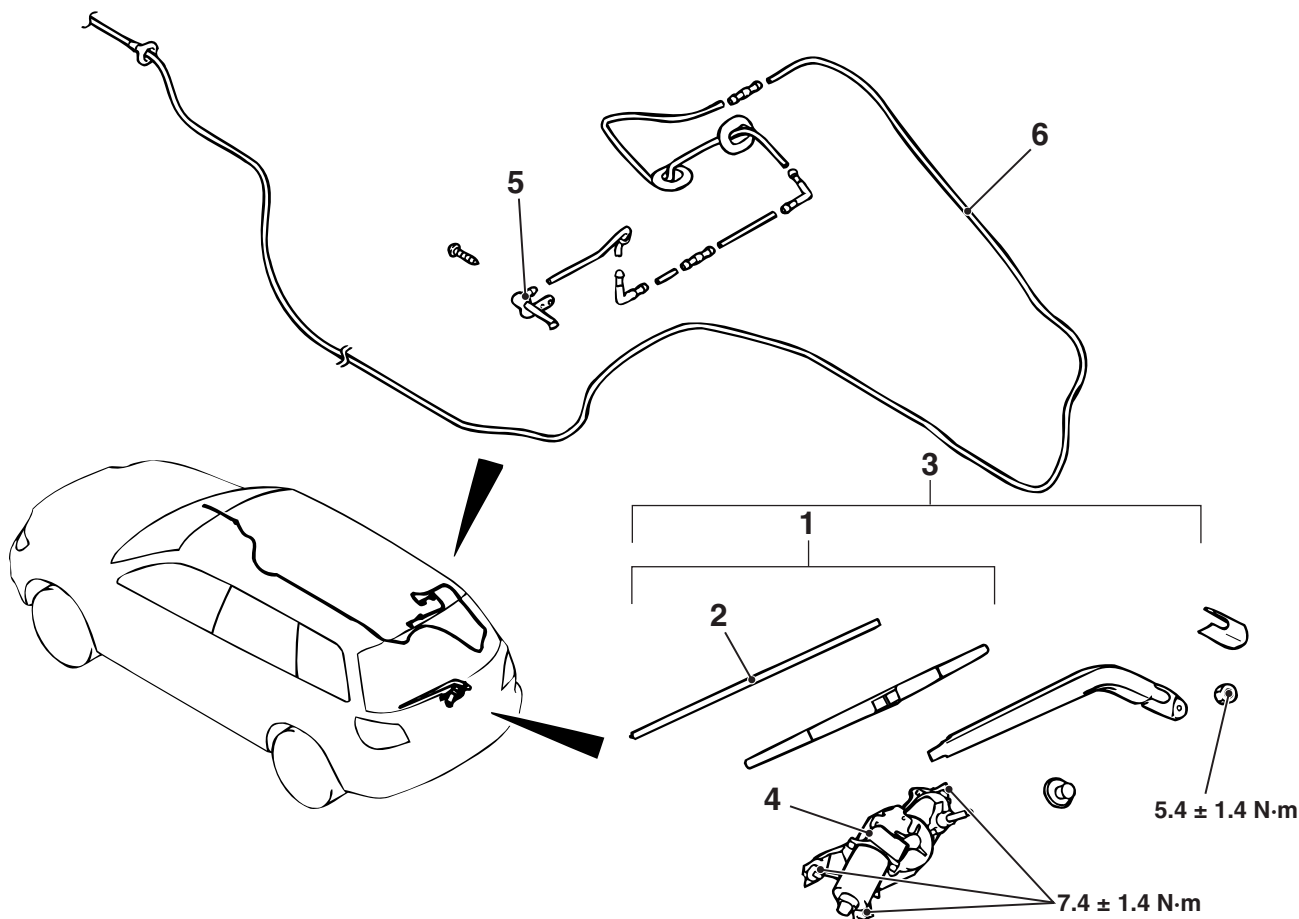
REAR WIPER AND WASHER

REMOVAL AND INSTALLATION

M1511008500594

Pre-removal and Post-installation Operation

Washer Tank Assembly and Rear Washer Motor Removal and Installation (Refer to P.51-36.)



AC300618AB

Wiper blade assembly removal steps

1. Wiper blade assembly
- >>B<< 2. Wiper blade

Rear wiper motor removal steps

- >>A<< 3. Wiper arm and blade assembly
 - Tailgate lower trim (Refer to GROUP 52A, Tailgate trim P.52A-17.)
 - Tailgate waterproof film (Refer to GROUP 42, Tailgate P.42-46.)
4. Rear wiper motor assembly

Rear washer nozzle removal steps

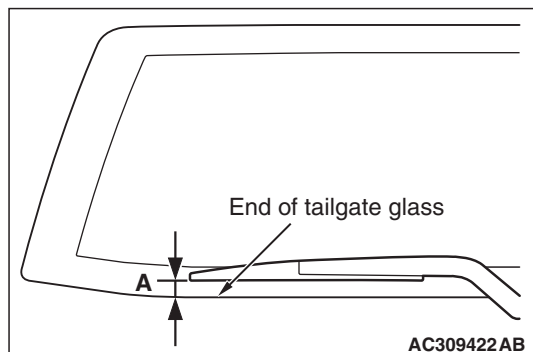
- High-mounted stop lamp assembly (Refer to GROUP 54A, High-mounted stop lamp P.54A-82.)
- 5. Rear washer nozzle

Washer hose removal steps

- Cowl side trim, front scuff plate, centre pillar trim lower, rear scuff plate, rear pillar trim and rear shelf trim (Refer to GROUP 52A, Trims P.52A-10.)
- Tailgate lower trim, tailgate side trim, tailgate upper trim (Refer to GROUP 52A, Tailgate trim P.52A-17.)
- High-mounted stop lamp assembly (Refer to GROUP 54A, High-mounted stop lamp P.54A-82.)
- 6. Rear washer hose

NOTE: For removal and installation of the wiper and washer switch, refer to GROUP 54A, Column switch P.54A-86.

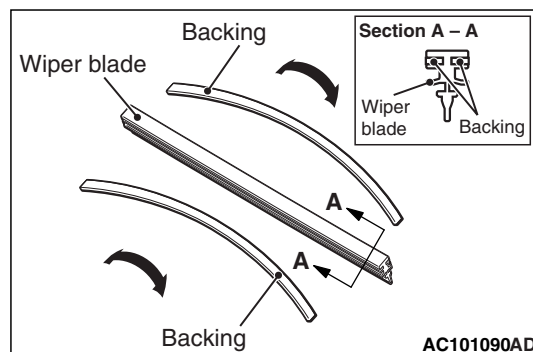
INSTALLATION SERVICE POINTS

>>A<< REAR WIPER ARM AND BLADE
ASSEMBLY INSTALLATION

Before installing the rear wiper arm and blade assembly, operate the rear wiper motor so that the motor stops at the predetermined park position. Install the rear wiper arm and blade assembly and adjust the rear wiper blade position so that the blade end stops at the predetermined position (standard position).

Standard value: (A) 30 ± 5 mm

>>B<< WIPER BLADE INSTALLATION

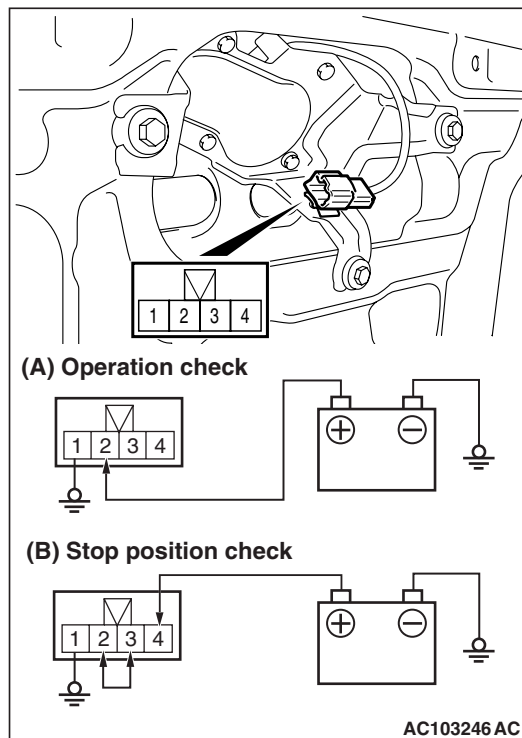
CAUTION

Use a curved backing like that shown for the backing of a wiper blade to ensure sustained wiper wiping performance.

INSPECTION

REAR WIPER MOTOR CHECK

M1511008600364



Inspect the rear wiper motor by removing the harness connector with the motor attached to the vehicle.

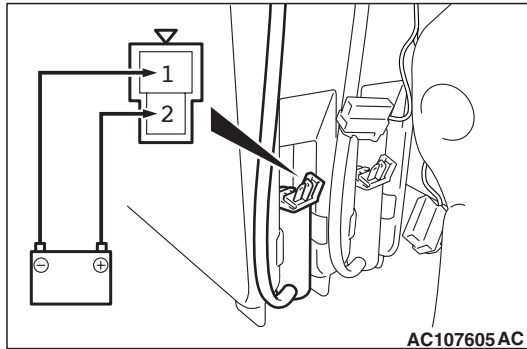
WIPER MOTOR OPERATION

Connect the battery to the rear wiper motor as shown in the illustration (A) and check the motor operation.

WIPER MOTOR AT STOP POSITION
OPERATION

1. Connect the battery to the rear wiper motor as shown in the illustration (A).
2. Disconnect the battery cable from the rear wiper motor while it is turning and then check to see that the motor stops.
3. Re-connect the battery as shown in Figure (B).
4. Check to see that the rear wiper motor runs and then stops at the automatic stop position.

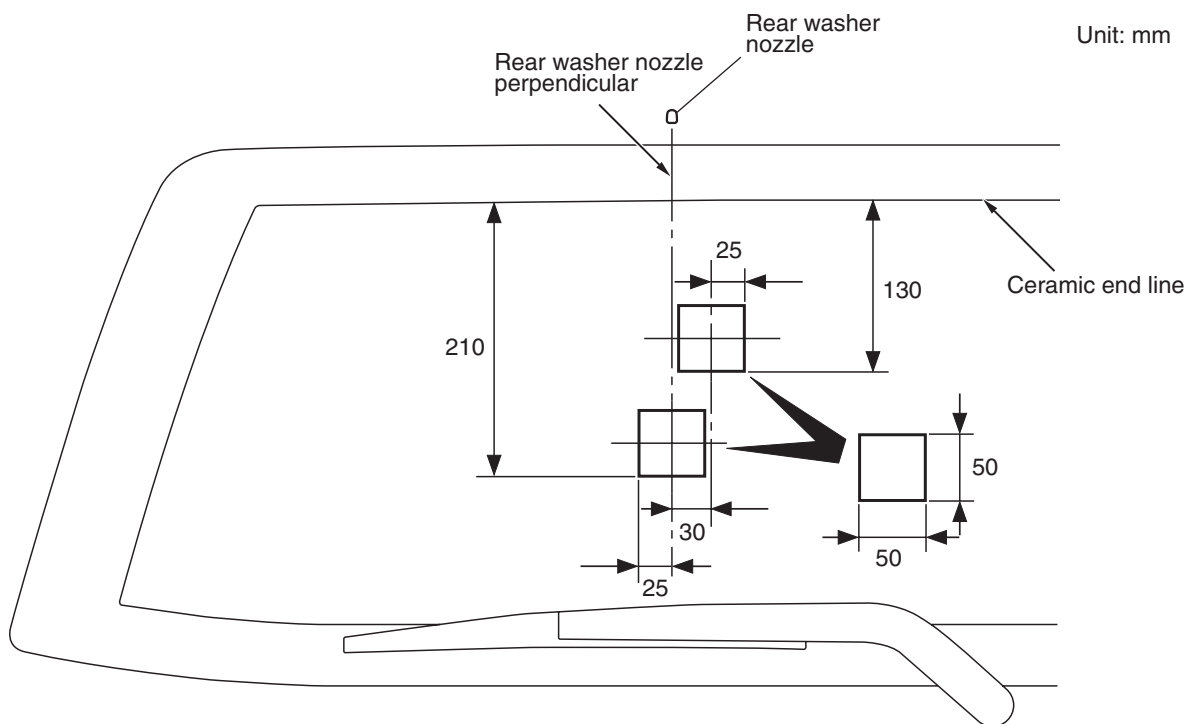
REAR WASHER MOTOR CHECK



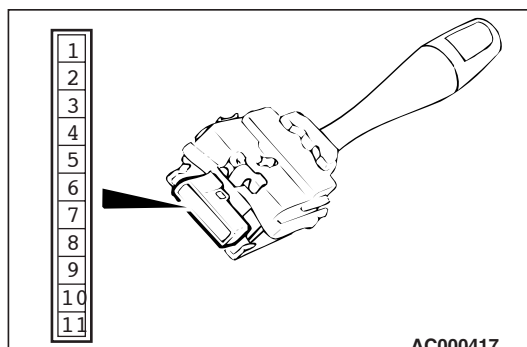
1. Remove the rear washer tank assembly with the washer hose attached. Then fill the washer tank with water.
2. Check to see that the water is vigorously sprayed when connecting the positive battery terminal to terminal number 2 and terminal number 1 to the negative battery terminal.

REAR WASHER FLUID EJECTION CHECK

Move the nozzle to adjust the position so that the spray is in the area shown in the illustration.



REAR WIPER AND WASHER SWITCH CHECK



Check continuity between the switch terminals.

Switch position	Tester connection	Specified condition
OFF	4 – 6, 5 – 6	Open circuit
Rear wiper switch	4 – 6	Less than 2 ohms
Rear washer switch	5 – 6	

WIPER DEICER

GENERAL INFORMATION

M1511000100688

Wiper Deicer Operation

The defogger relay switch is activated (ON) by turning on the A/C-ECU built-in defogger switch when the ignition switch is in the "ON" position. When the defogger relay is turned ON, power is supplied to the rear defogger and wiper deicer, and the heater of the wiper deicer starts operations. The defogger comes with a timer function and will automatically turn OFF

the switch approximately 11 minutes <manual A/C> or 20 minutes <automatic A/C> after the defogger switch is turned ON. The wiper deicer operations are also terminated along with the rear defogger, at this time.

TROUBLESHOOTING

DIAGNOSIS TROUBLESHOOTING FLOW

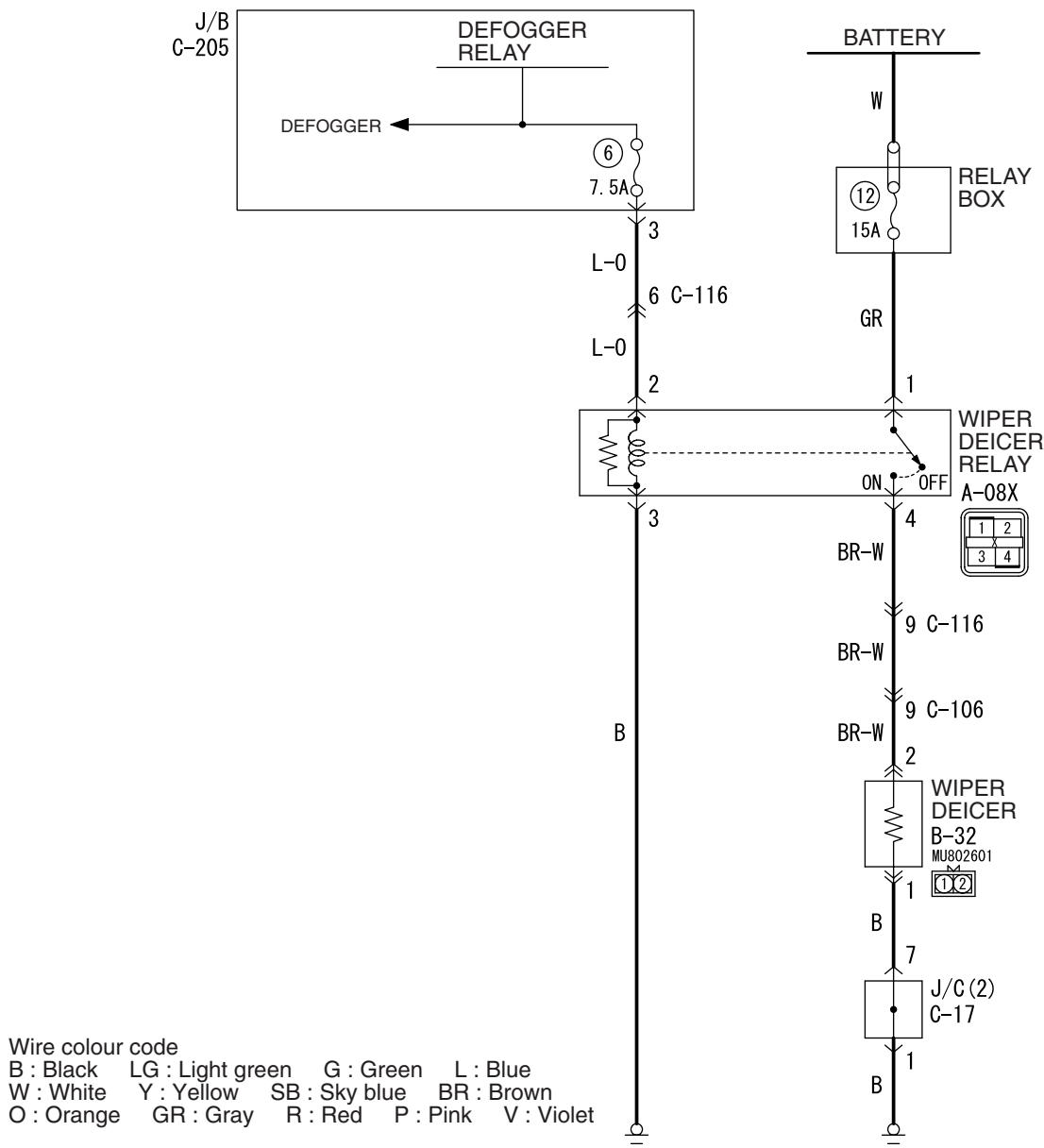
M1511014600095

Refer to GROUP 00 – How to Use Troubleshooting/Inspection Service Points [P.00-6](#).

SYMPTOM PROCEDURES

INSPECTION PROCEDURE : Wiper Deicer Does not Operate

Wiper deicer Circuit



W3Z13E02AA

COMMENTS ON TROUBLE SYMPTOM

The wiper deicer should work for approximately 11 minutes <manual A/C> or 20 minutes <automatic A/C> when the rear defogger switch is turned on. If the wiper deicer does not work for the specified period, the defogger relay circuit and the power sup-

ply and/or earth circuit to the wiper deicer may be defective. The wiper deicer itself or its relay may be also defective.

POSSIBLE CAUSES

- Malfunction of the wiper deicer
- Malfunction of the wiper deicer relay
- Damaged harness wires and connectors

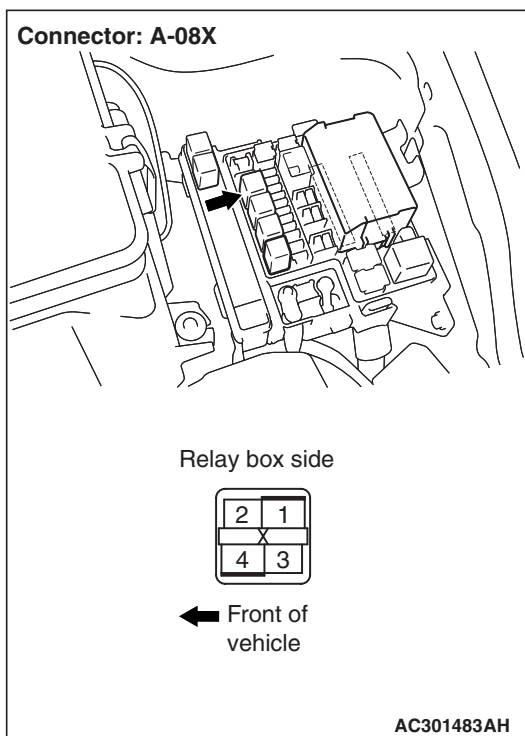
DIAGNOSIS PROCEDURE**STEP 1. Check the defogger.**

Check that the rear defogger works normally.

Q: Is the check result normal?

YES : Go to Step 2.

NO : Troubleshoot the rear defogger (Refer to GROUP 55A – Trouble symptom chart P.55A-5 or GROUP 55B – Trouble symptom chart P.55B-23).

STEP 2. Connector check: A-08X wiper deicer relay connector

Q: Is the check result normal?

YES : Go to Step 3.

NO : Repair the defective connector.

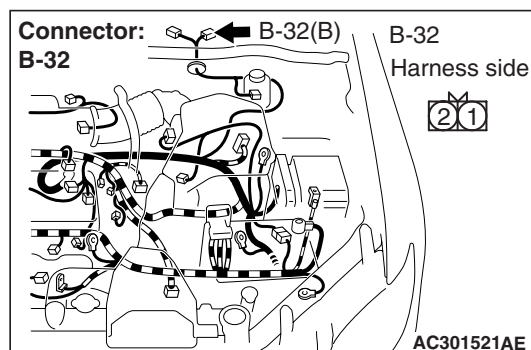
STEP 3. Check the wiper deicer relay.

Check that the wiper deicer relay works normally (Refer to wiper deicer relay check P.51-51).

Q: Is the check result normal?

YES : Go to Step 4.

NO : Replace the wiper deicer relay.

STEP 4. Connector check: B-32 wiper deicer connector

Q: Is the check result normal?

YES : Go to Step 5.

NO : Repair the defective connector.

STEP 5. Check the wiper deicer.

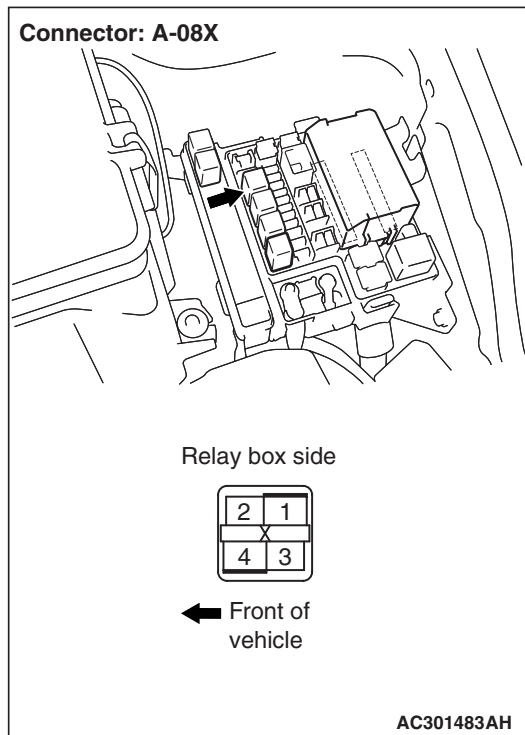
Check that the wiper deicer works normally (Refer to wiper deicer check P.51-51).

Q: Is the check result normal?

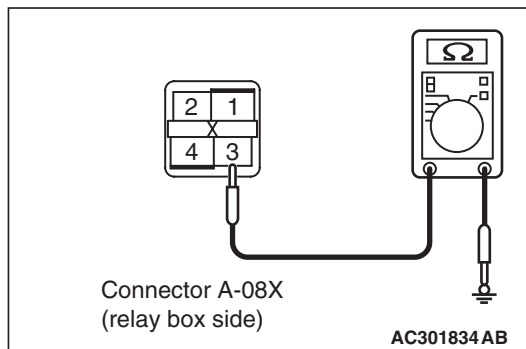
YES : Go to Step 6.

NO : Replace the wiper deicer.

STEP 6. Resistance measurement at the A-08X wiper deicer relay connector.



- (1) Disconnect the connector, and measure at the relay box side.



- (2) Resistance between A-08X wiper deicer relay connector terminal No.3 and body earth

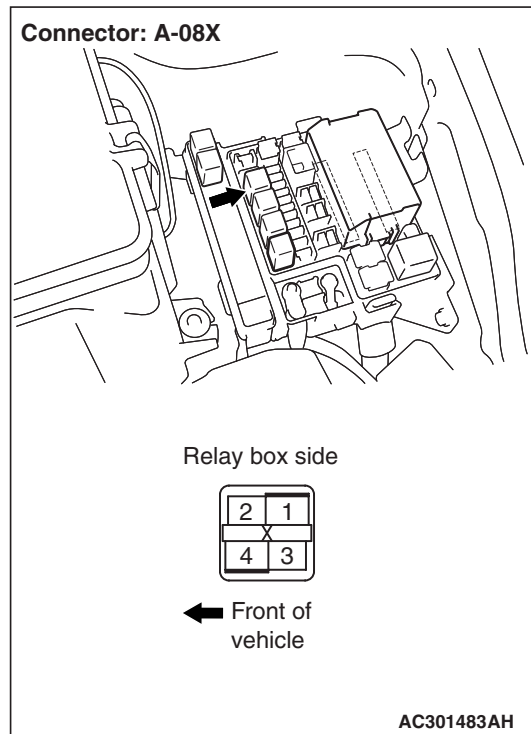
OK: 2 Ω or less

Q: Is the check result normal?

YES : Go to Step 8.

NO : Go to Step 7.

STEP 7. Check the wiring harness between A-08X wiper deicer relay connector terminal No.3 and body earth.



- Check the earth wires for open circuit.

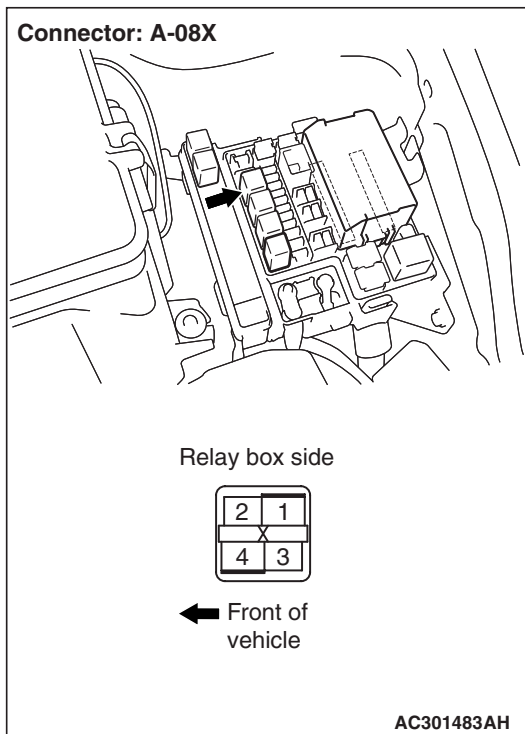
Q: Is the check result normal?

YES : The trouble can be an intermittent malfunction (Refer to GROUP 00 – How to Cope with Intermittent Malfunction [P.00-6](#)).

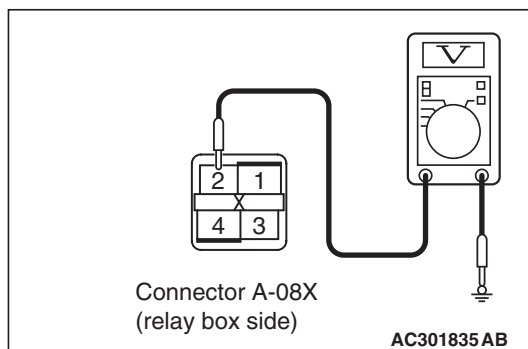
NO : Repair the wiring harness.

STEP 8. Voltage measurement at the A-08X wiper deicer relay connector.

- (1) Turn the ignition switch to the ON position.
- (2) Defogger switch: ON



- (3) Disconnect the connector, and measure at the relay box side.



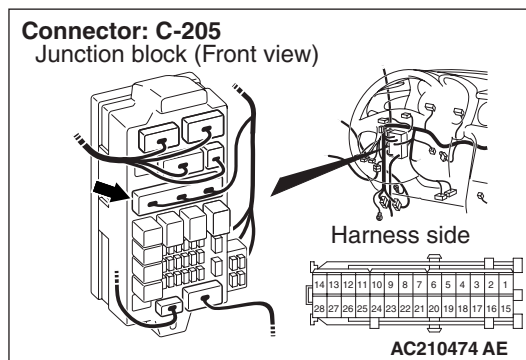
- (4) Voltage between A-08X wiper deicer relay connector terminal No.2 and body earth

OK: System voltage

Q: Is the check result normal?

YES : Go to Step 11.

NO : Go to Step 9.

STEP 9. Connector check: C-205 junction block connector

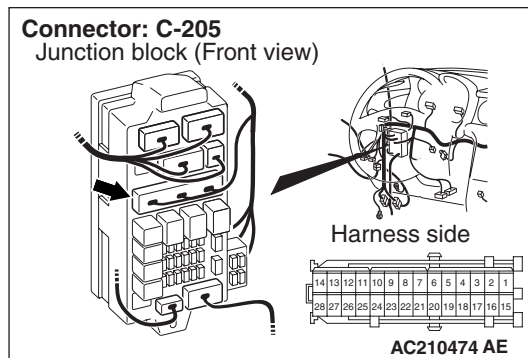
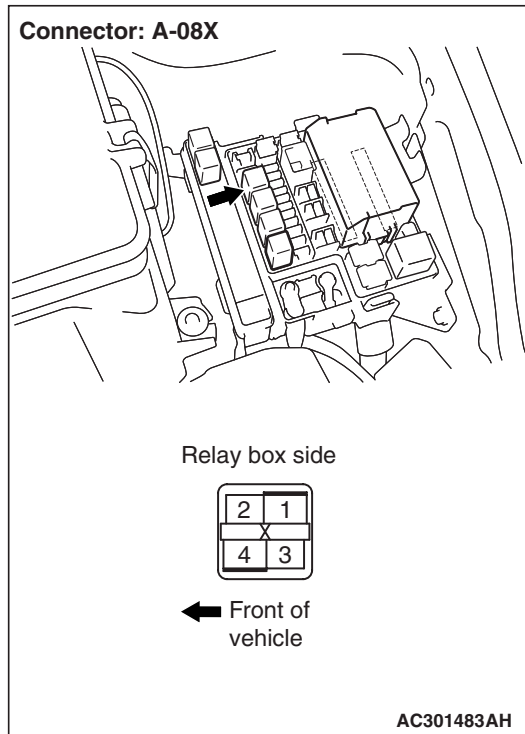
Q: Is the check result normal?

YES : Go to Step 10.

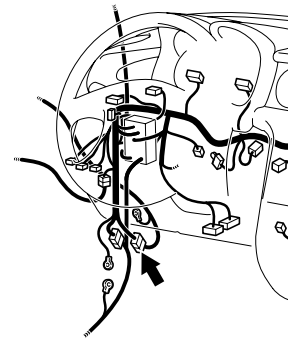
NO : Repair the defective connector.

STEP 10. Check the wiring harness between A-08X wiper deicer relay connector terminal No.2 and C-205 junction block connector terminal No.3.

NOTE:



Connector: C-116



C-116

1	2	X	3	4		5	6	7	X	8	9
10	11	12	13	14	15	16	17	18	19	20	21
22	23	24	25	26	27	28	29	30	31	32	33
34	35	36	37		38	39	40	41	42	43	

AC301396AB

Prior to the wiring harness inspection, check intermediate connector C-116, and repair if necessary.

Q: Is the check result normal?

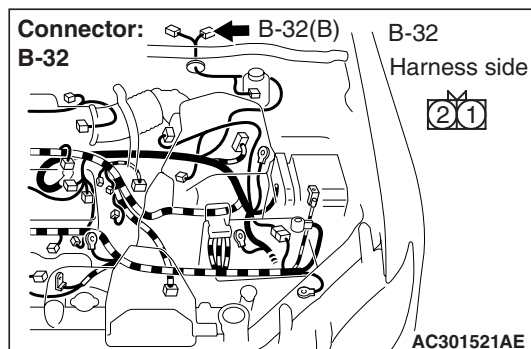
YES : The trouble can be an intermittent malfunction (Refer to GROUP 00 – How to Cope with Intermittent Malfunction [P.00-6](#)).

NO : Repair the wiring harness.

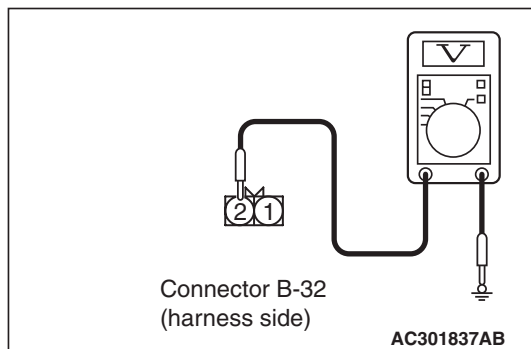
- Check the power supply line for open circuit.

STEP 11. Voltage measurement at B-32 wiper deicer connector.

- (1) Turn the ignition switch to the ON position.
- (2) Defogger switch: ON



- (3) Disconnect the connector, and measure at the wiring harness side.



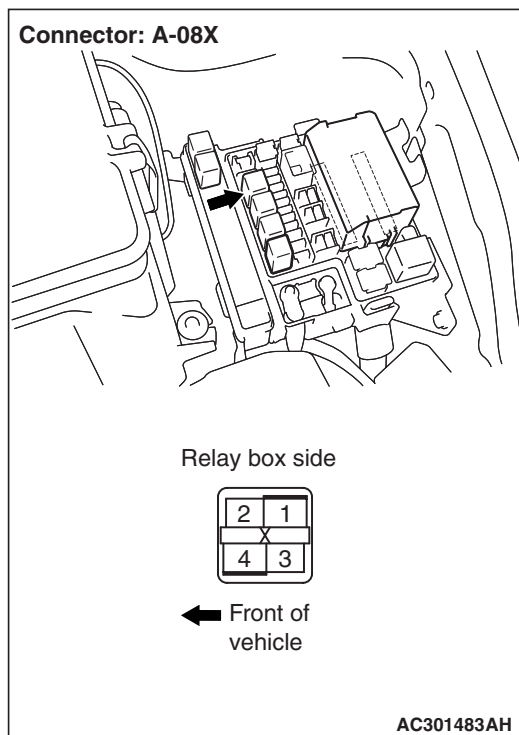
- (4) Voltage between B-32 wiper deicer connector terminal No.2 and body earth

OK: System voltage

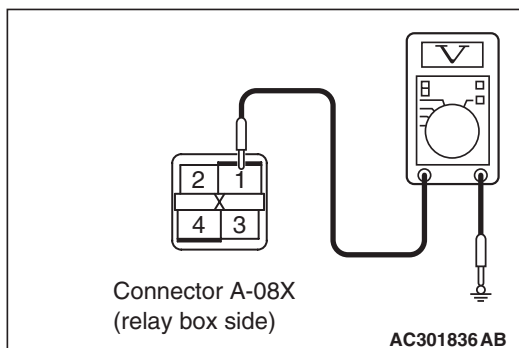
Q: Is the check result normal?

YES : Go to Step 15.

NO : Go to Step 12.

STEP 12. Voltage measurement at the A-08X wiper deicer relay connector.

- (1) Disconnect the connector, and measure at the relay box side.



- (2) Voltage between A-08X wiper deicer relay connector terminal No.1 and body earth

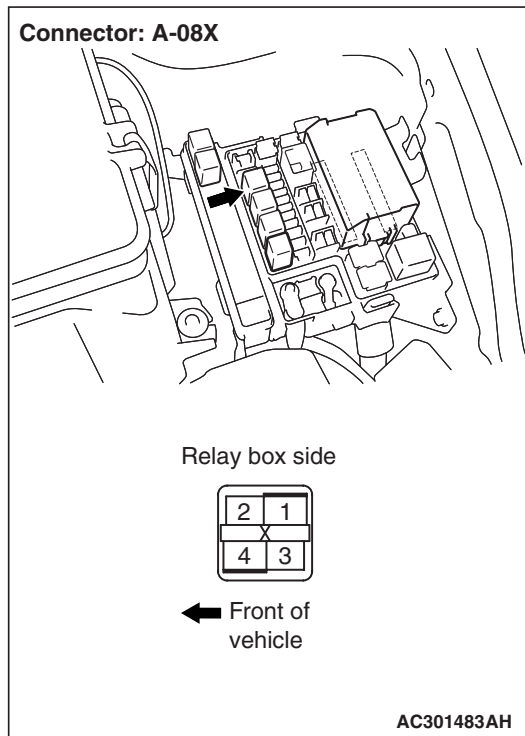
OK: System voltage

Q: Is the check result normal?

YES : Go to Step 14.

NO : Go to Step 13.

STEP 13. Check the wiring harness between A-08X wiper deicer relay connector terminal No.2 and the battery.



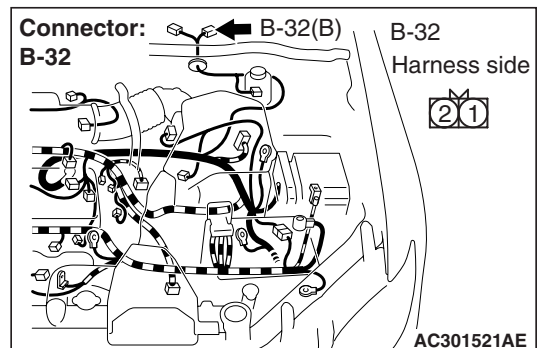
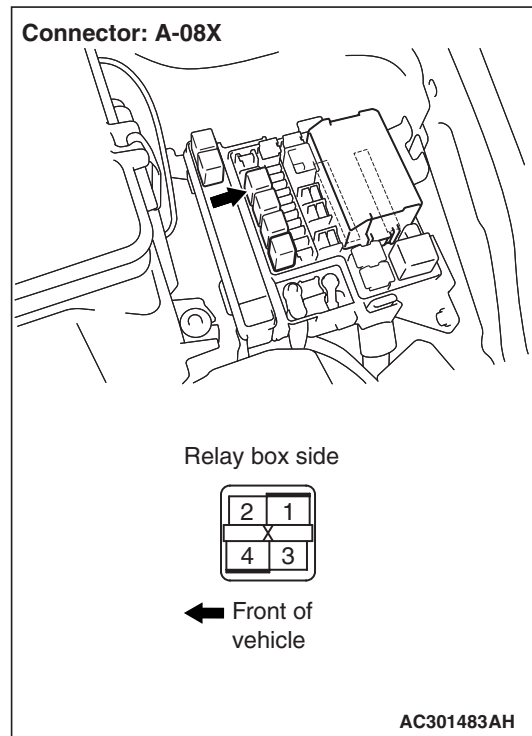
- Check the power supply line for open circuit.

Q: Is the check result normal?

YES : The trouble can be an intermittent malfunction (Refer to GROUP 00 – How to Cope with Intermittent Malfunction [P.00-6](#)).

NO : Repair the wiring harness.

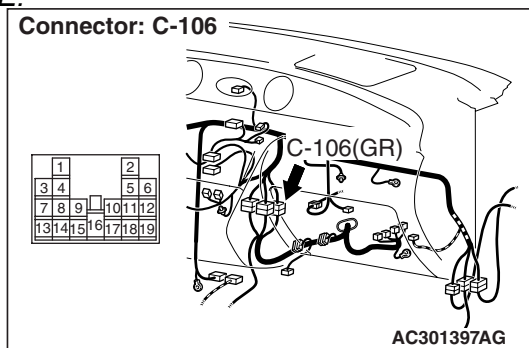
STEP 14. Check the wiring harness between A-08X wiper deicer relay connector terminal No.4 and B-32 wiper deicer connector terminal No.2.



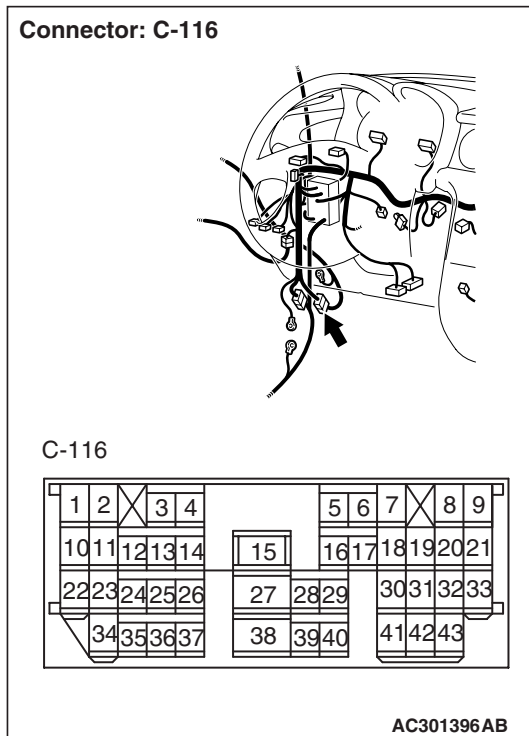
- Check the power supply line for open circuit.

NOTE:

Connector: C-106



Connector: C-116



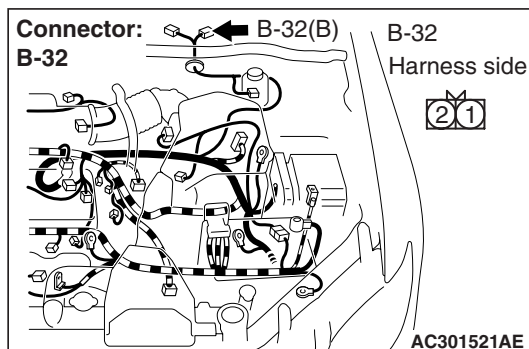
Prior to the wiring harness inspection, check intermediate connectors C-106 and C-116, and repair if necessary.

Q: Is the check result normal?

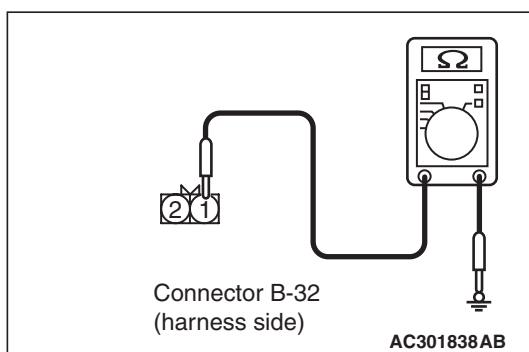
YES : The trouble can be an intermittent malfunction (Refer to GROUP 00 – How to Cope with Intermittent Malfunction [P.00-6](#)).

NO : Repair the wiring harness.

STEP 15. Resistance measurement at B-32 wiper deicer connector.



- (1) Disconnect the connector, and measure at the wiring harness side.



- (2) Resistance between B-32 wiper deicer connector terminal No.1 and body earth

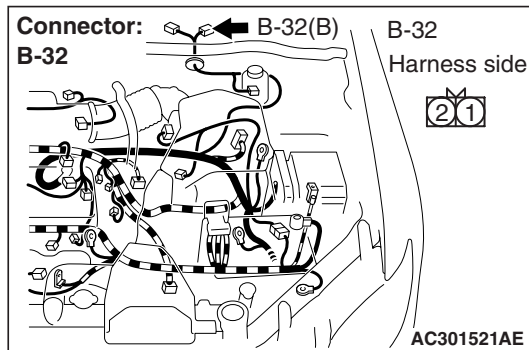
OK: 2 Ω or less

Q: Is the check result normal?

YES : The trouble can be an intermittent malfunction (Refer to GROUP 00 – How to Cope with Intermittent Malfunction [P.00-6](#)).

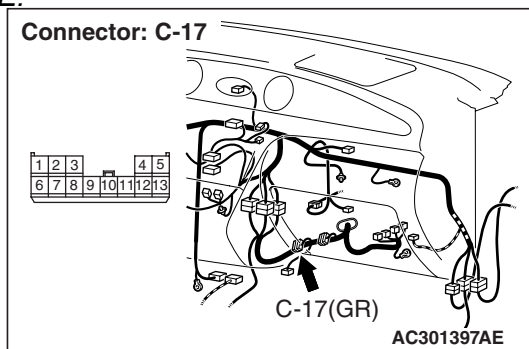
NO : Go to Step 16.

STEP 16. Check the wiring harness between B-32 wiper deicer connector terminal No.1 and body earth.



- Check the earth wires for open circuit.

NOTE:



Prior to the wiring harness inspection, check joint connector C-17, and repair if necessary.

Q: Is the check result normal?

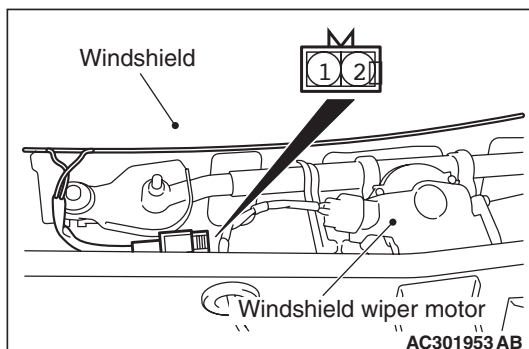
YES : The trouble can be an intermittent malfunction (Refer to GROUP 00 – How to Cope with Intermittent Malfunction P.00-6).

NO : Repair the wiring harness.

WIPER DEICER

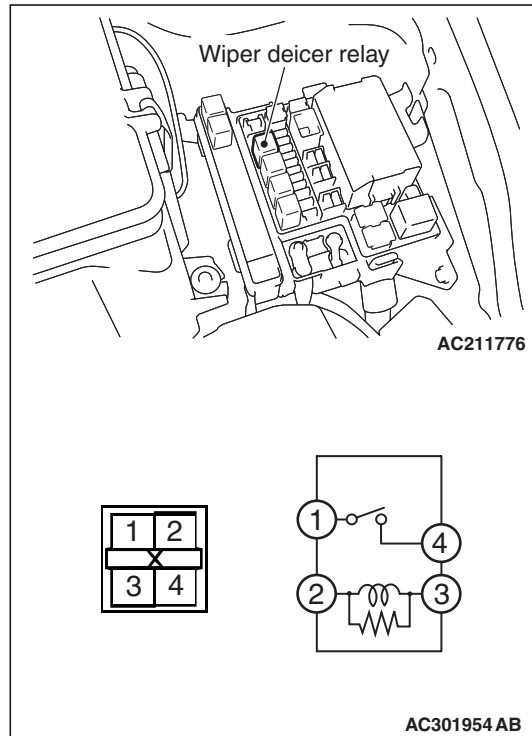
INSPECTION

WIPER DEICER CHECK



There should be continuity between the wiper deicer connector terminal No.1 and 2.

WIPER DEICER RELAY CHECK



Battery voltage	Terminal number to be connected to tester	Continuity test results
Not applied	1 – 4	Open circuit
Connect terminal No.3 and battery (–) terminal. Connect terminal No.2 and battery (+) terminal.	1 – 4	Less than 2 ohms

HEADLAMP WASHER

TROUBLESHOOTING

M1511000700486

The headlamp washer is controlled by the Smart Wiring System (SWS). For troubleshooting, refer to GROUP 54B, Troubleshooting [P.54B-33](#) or GROUP 54C, Troubleshooting [P.54C-21](#).

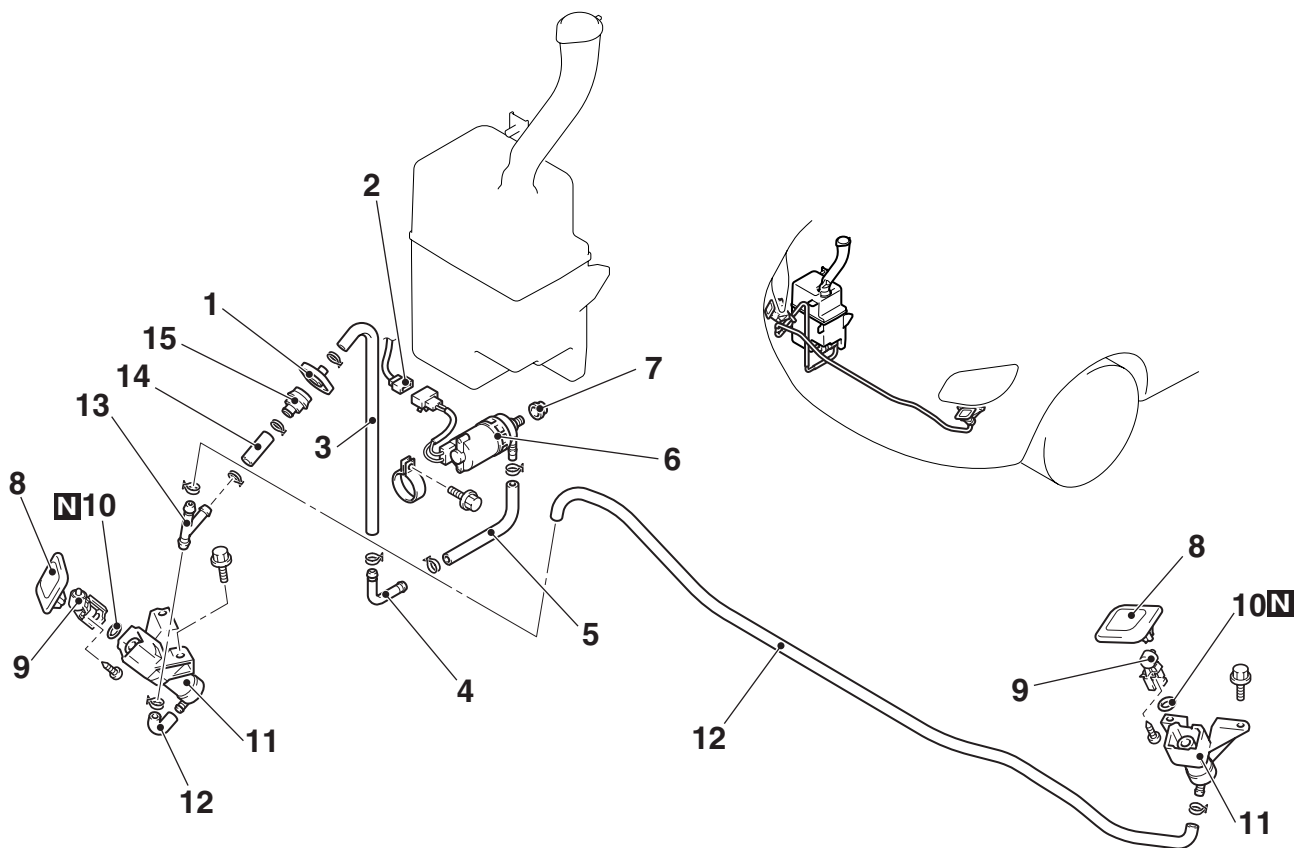
HEADLAMP WASHER

REMOVAL AND INSTALLATION

M1511009700041

Pre-removal and Post-installation Operation

- Radiator Grille Removal and Installation (Refer to [P.51-10](#).)
- Front Bumper Extension Removal and Installation (Refer to [P.51-3](#).)
- Under Cover Removal and Installation (Refer to [P.51-31](#).)



AC300298AB

Removal steps

- Washer fluid draining
- 1. Headlamp washer hose connection
- 2. Headlamp washer motor connector
- 3. Headlamp washer hose
- 4. Headlamp washer joint

Removal steps (Continued)

- 5. Headlamp washer hose
- 6. Headlamp washer motor
- 7. Headlamp washer motor packing
- Front bumper (Refer to [P.51-3](#).)
- 8. Headlamp washer cover

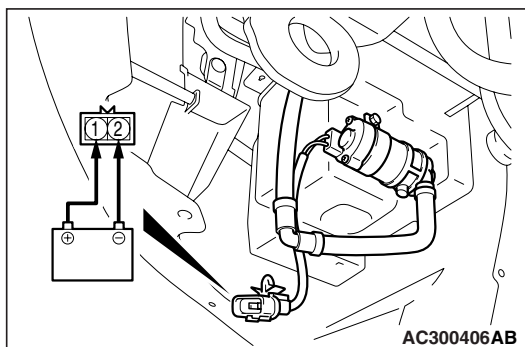
Removal steps (Continued)

9. Headlamp washer nozzle
10. O-ring
11. Headlamp washer actuator assembly
12. Headlamp washer hose
13. Headlamp washer joint
14. Headlamp washer hose
15. Headlamp washer joint

INSPECTION

HEADLAMP WASHER MOTOR CHECK

M1511009800060

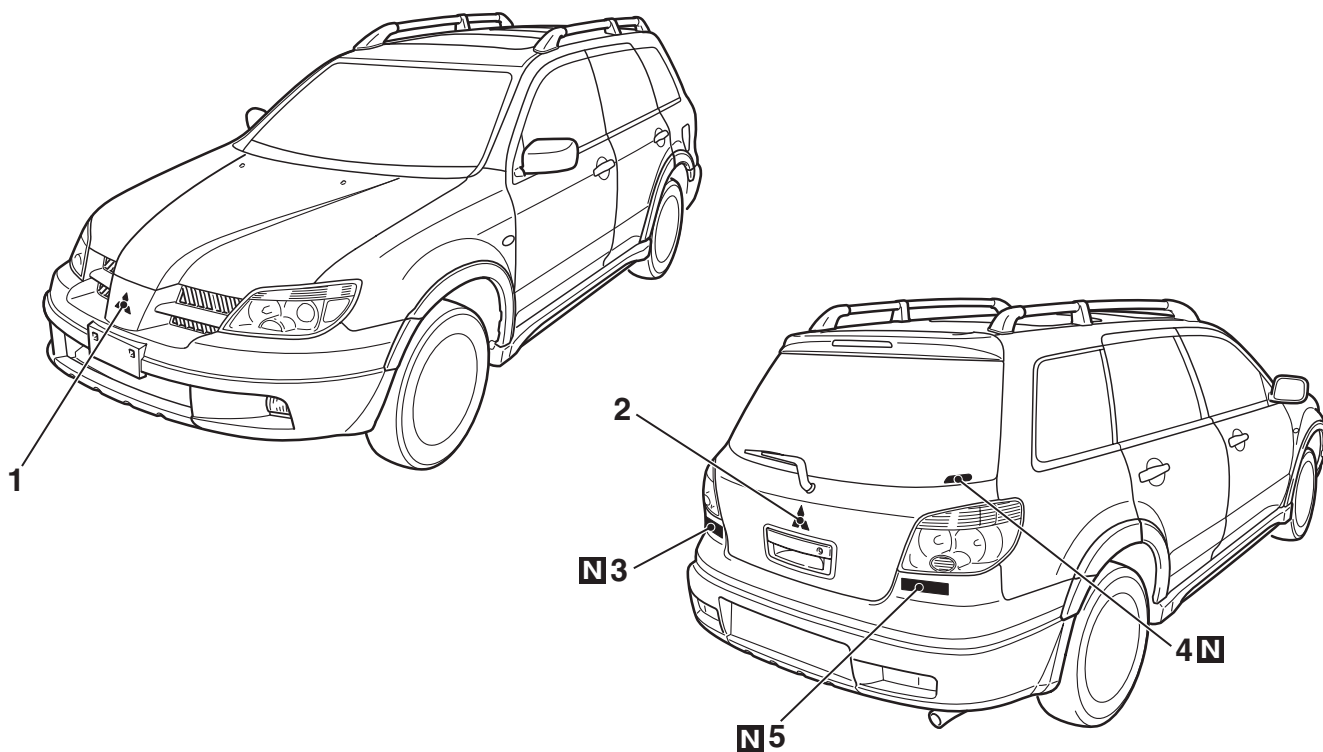


1. Remove the headlamp washer motor connector.
2. Check to see that the water is vigorously sprayed when connecting the positive battery terminal to terminal number 1 and terminal number 2 to the negative battery terminal.

MARK

REMOVAL AND INSTALLATION

M1511011801071



- 1. Front three-diamond mark
- >>A<< 2. Rear three-diamond mark
- >>A<< 3. OUTLANDER mark

- >>A<< 4. 4WD mark
- >>A<< 5. TURBO mark

AC401111AC

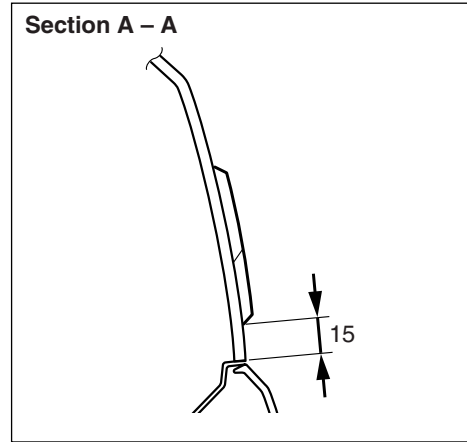
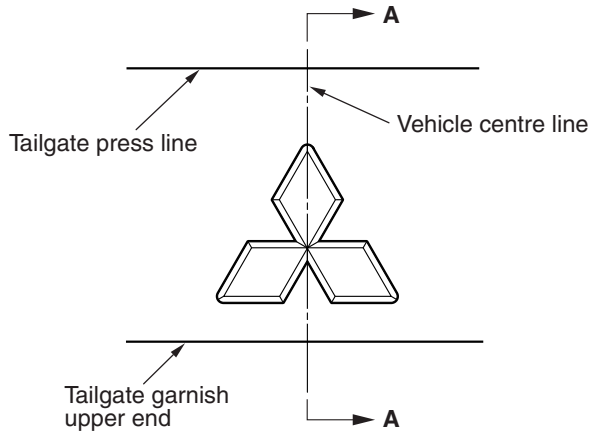
INSTALLATION SERVICE POINT

>>A<< MARK INSTALLATION

1. Installation position

Attach each mark to the position shown in the illustration.

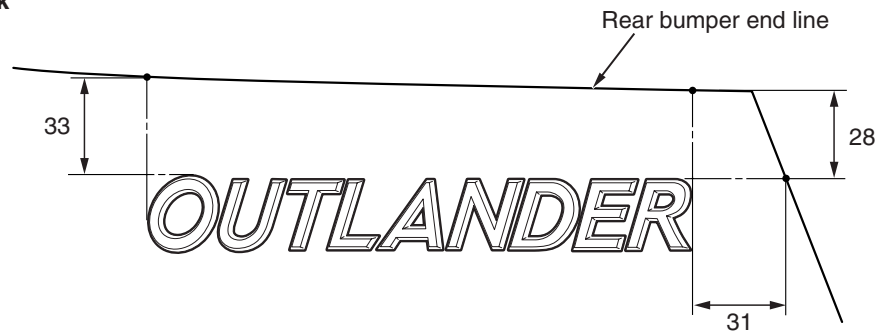
2. Rear three-diamond mark



Unit: mm

AC313753AF

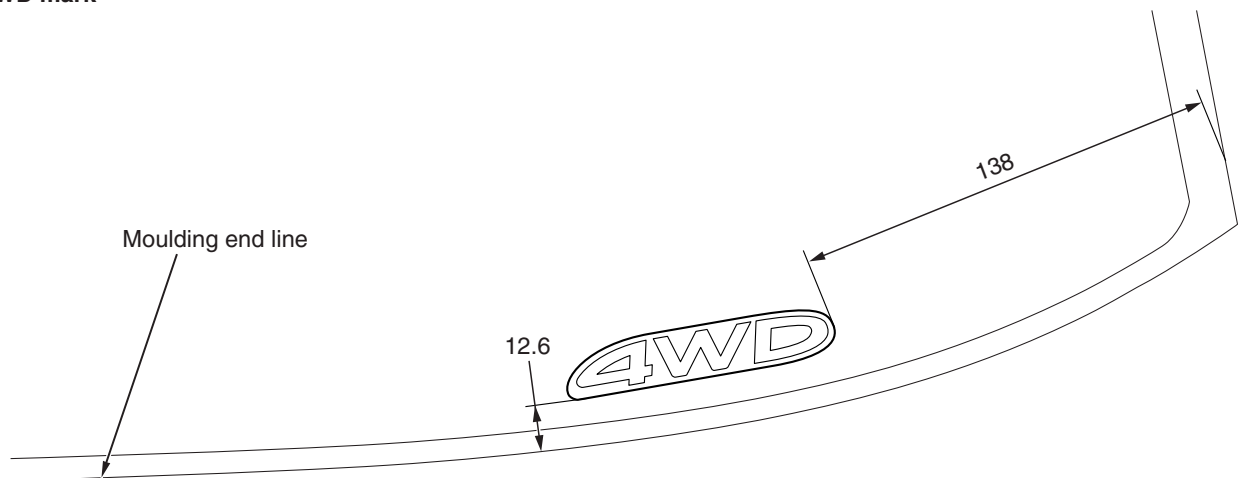
3. OUTLANDER mark



Unit: mm

AC400529AE

4. 4WD mark

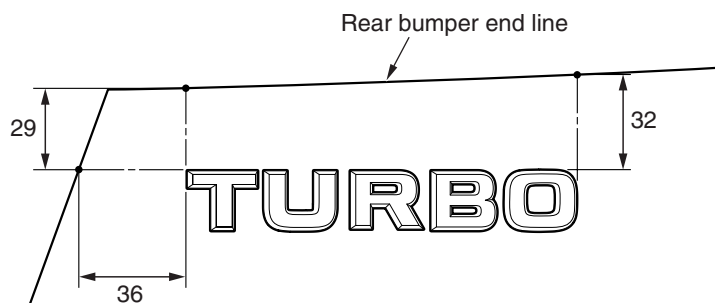


Unit: mm

AC400900 AB

5. TURBO mark

Unit: mm



AC313770 AD

2. Installation procedure

- (1) Use 3M ATD Part number 8906 or equivalent to clean the mark installation surfaces on the body.

CAUTION

When attaching the marks, the ambient temperature should be 20 – 38°C and the air should be completely free of dust. If the ambient temperature is lower than 20°C, the marks and the places on the vehicle body where the marks are to be attached should be heated to 20 – 38°C.

- (2) Peel off the protection sheet on the back of the marks to paste it on the installation position.

DOOR MIRROR

GENERAL INFORMATION

M1511000100699

REMOTE CONTROLLED MIRROR OPERATION

The mirror on the door mirror moves up/down and left/right by operating the remote controlled door mirror switch when the ignition switch is in the "ON" or "ACC" position.

HEATED DOOR MIRROR OPERATION

The defogger relay switch is activated (ON) by turning on the A/C-ECU built-in defogger switch when the ignition switch is in the "ON" position. When the defogger relay is turned ON, power is supplied to the defogger and door mirror and the door mirror heater

(heated door mirror) starts operations. The defogger comes with a timer function and will automatically turn OFF the switch about 11 minutes <manual A/C> or about 20 minutes <automatic A/C> after the defogger switch is turned ON. The heated door mirror operation is also terminated along with the defogger, at this time.

TROUBLESHOOTING

DIAGNOSIS TROUBLESHOOTING FLOW

M1511014600103

Refer to GROUP 00 – How to Use Troubleshooting/Inspection Service Points [P.00-6](#).

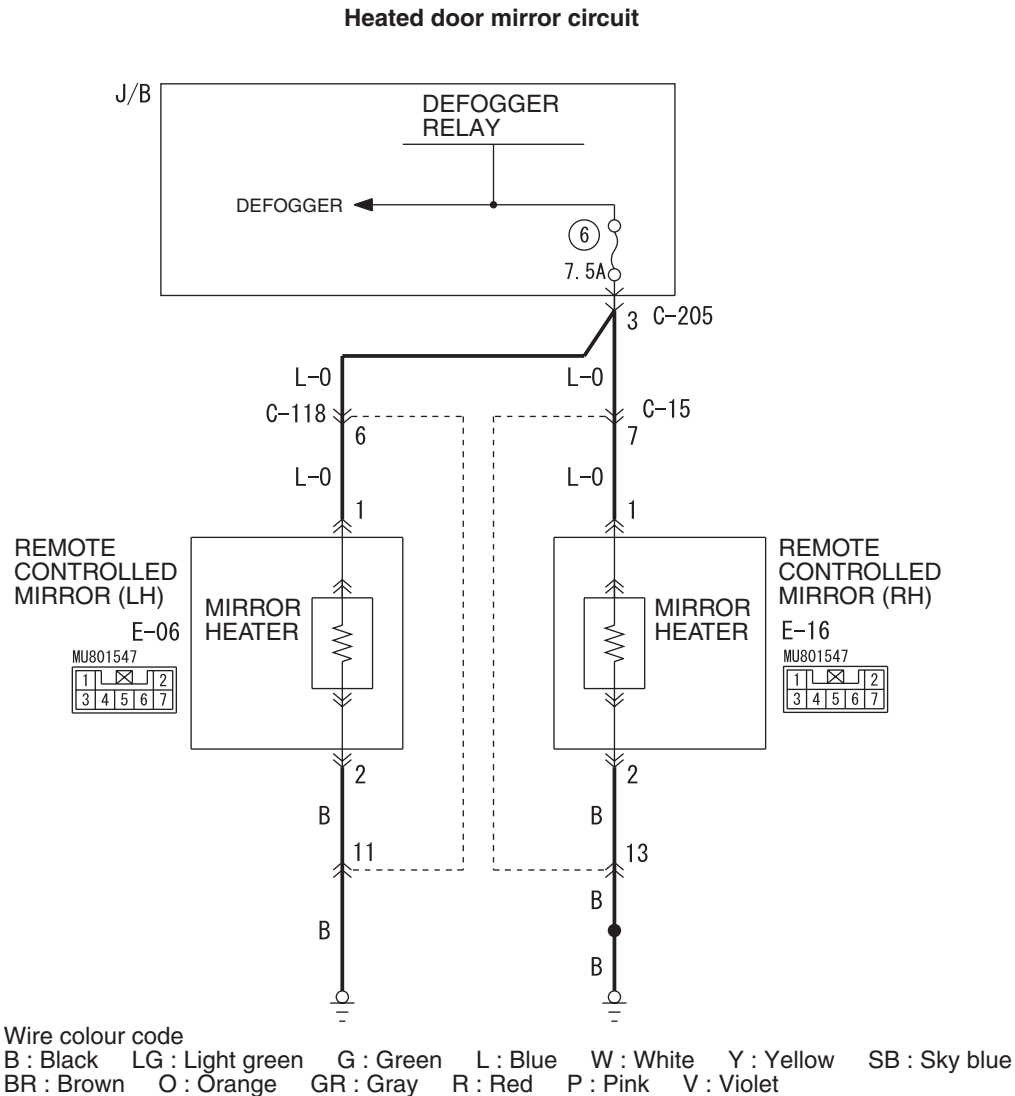
TROUBLE SYMPTOM CHART

M1511015000115

Symptom	Inspection procedure	Reference page
All heated door mirrors do not operate	1	P.51-57
The right or left heated door mirror does not operate	2	P.51-59

SYMPTOM PROCEDURES

INSPECTION PROCEDURE 1: All Heated Door Mirrors do not Operate



AC606044AB

COMMENTS ON TROUBLE SYMPTOM

The heated door mirrors should work for approximately 11 minutes <manual A/C> or 20 minutes <automatic A/C> when the rear defogger switch is turned on. If the mirror heater does not work for the specified period, the defogger relay circuit (heated door mirror power supply circuit) may be defective.

POSSIBLE CAUSES

- Damaged harness wires and connectors

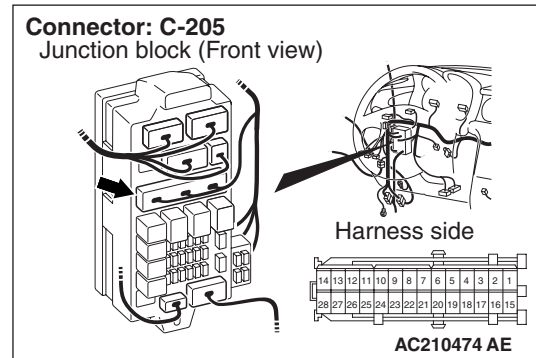
DIAGNOSIS PROCEDURE**STEP 1. Check the defogger.**

Check that the rear defogger system should work normally.

Q: Is the check result normal?

YES : Go to Step 2.

NO : Troubleshoot the rear defogger (Refer to GROUP 55A – Trouble symptom chart [P.55A-5](#) or GROUP 55B – Trouble symptom chart [P.55B-23](#)).

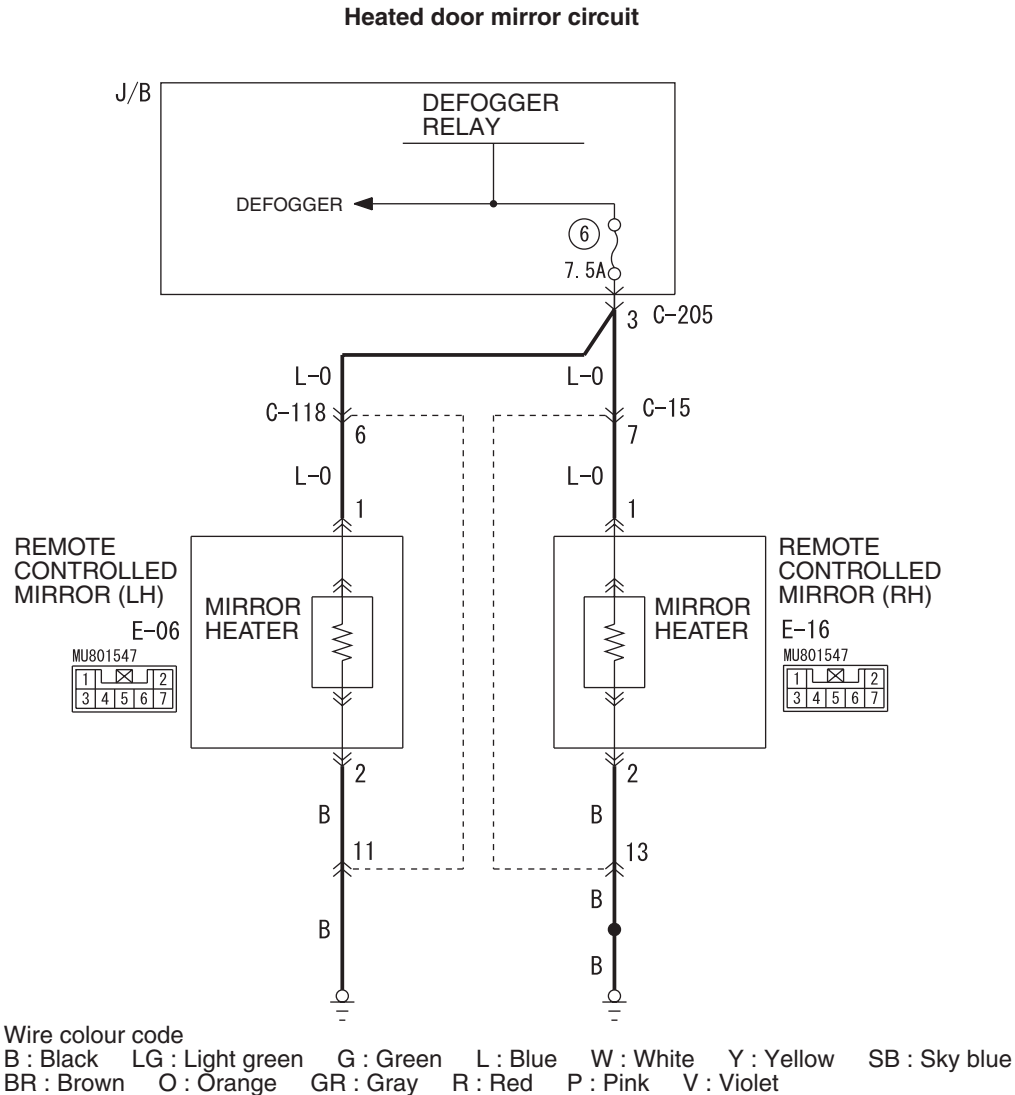
STEP 2. Connector check: C-205 junction block connector

Q: Is the check result normal?

YES : Intermittent malfunction (Refer to GROUP 00 – How to Cope with Intermittent Malfunction [P.00-6](#)).

NO : Repair the defective connector.

INSPECTION PROCEDURE 2: Right or Left Heated Door Mirror does not Operate



AC606044AB

COMMENTS ON TROUBLE SYMPTOM

If either of the heated door mirrors does not work, the door mirror assembly may be defective.

POSSIBLE CAUSES

- Malfunction of the door mirror assembly
- Damaged harness wires and connectors

DIAGNOSIS PROCEDURE

STEP 1. Verify the operation of each heated door mirror.

Q: Which door mirror does not heat?

Door mirror (RH) : Go to Step 2.

Door mirror (LH) : Go to Step 9.

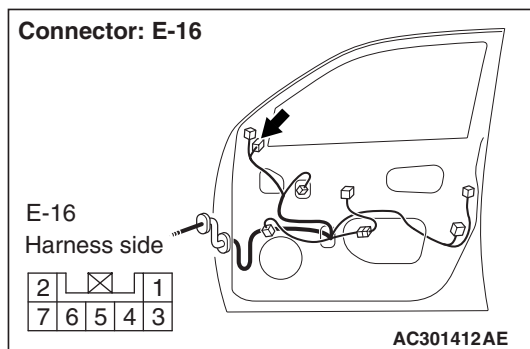
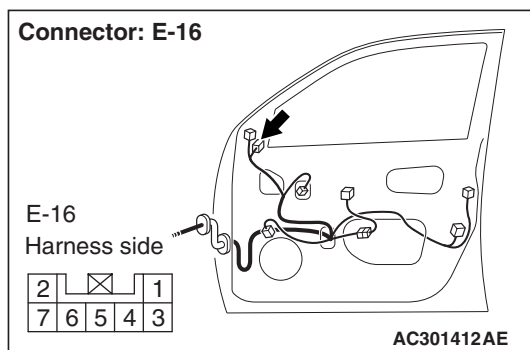
STEP 2. Check the door mirror assembly (RH).

Check that the heater element of the door mirror assembly (RH) is in good condition (Refer to the heated door mirror check [P.51-57](#)).

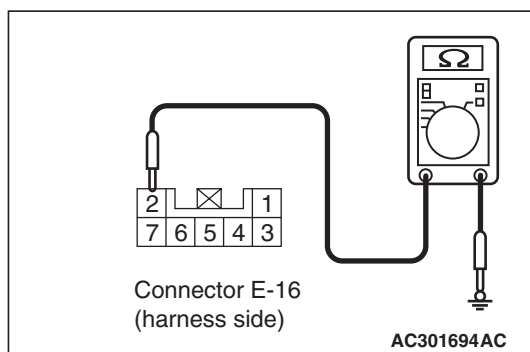
Q: Is the check result normal?

YES : Go to Step 3.

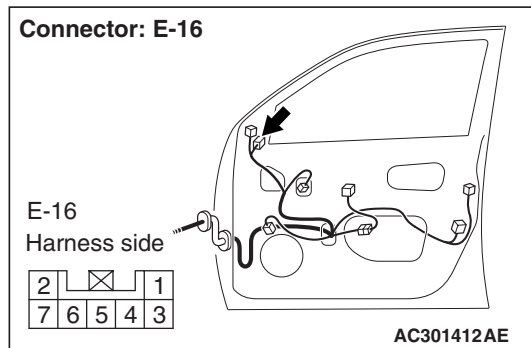
NO : Replace the door mirror assembly (RH).

STEP 3. Connector check: E-16 door mirror assembly (RH) connector**Q: Is the check result normal?****YES :** Go to Step 4.**NO :** Repair the defective connector.**STEP 4. Resistance measurement at the E-16 door mirror assembly (RH) connector.**

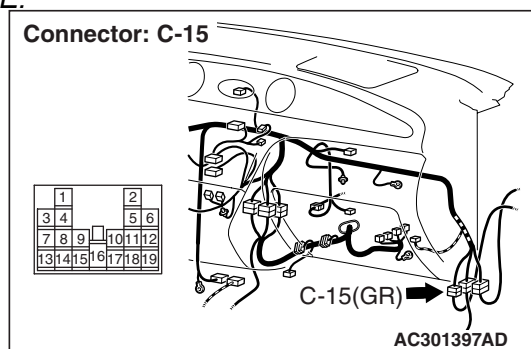
- (1) Disconnect the connector, and measure at the wiring harness side.



- (2) Resistance between E-16 door mirror assembly connector terminal No.2 and body earth

OK: 2 Ω or less**Q: Is the check result normal?****YES :** Go to Step 6.**NO :** Go to Step 5.**STEP 5. Check the wiring harness between E-16 door mirror assembly (LH) connector terminal No.2 and body earth.**

- Check the earth wires for open circuit.

NOTE:

Prior to the wiring harness inspection, check intermediate connector C-15, and repair if necessary.

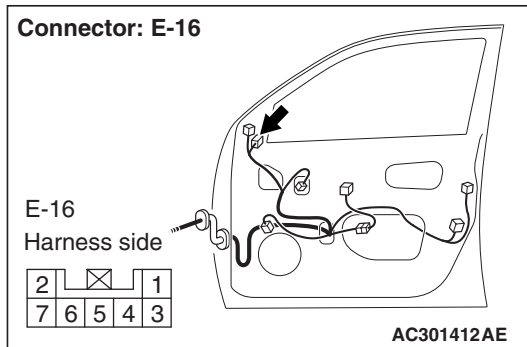
Q: Is the check result normal?

YES : Intermittent malfunction (Refer to GROUP 00 – How to Cope with Intermittent Malfunction [P.00-6](#)).

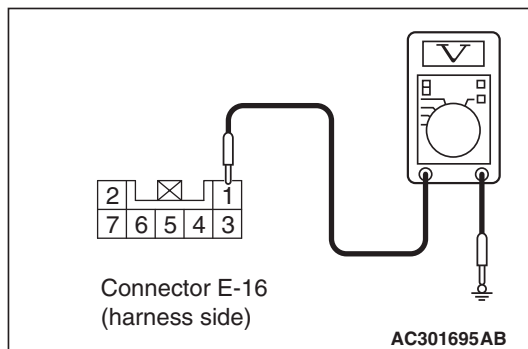
NO : Repair the wiring harness.

STEP 6. Voltage measurement at the E-16 door mirror assembly (RH) connector.

- (1) Turn the ignition switch to the ON position.
- (2) Defogger switch: ON



- (3) Disconnect the connector, and measure at the wiring harness side.



- (4) Voltage between E-16 door mirror assembly connector terminal No.1 and body earth

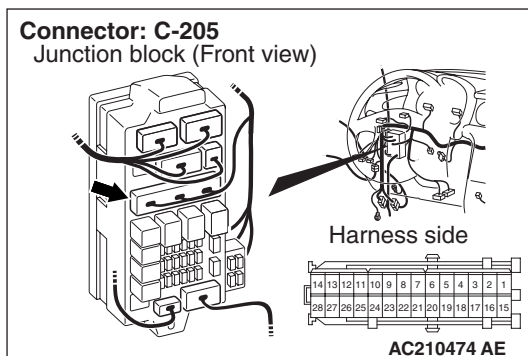
OK: System voltage

Q: Is the check result normal?

YES : Intermittent malfunction (Refer to GROUP 00 – How to Cope with Intermittent Malfunction [P.00-6](#)).

NO : Go to Step 7.

STEP 7. Connector check: C-205 junction block connector

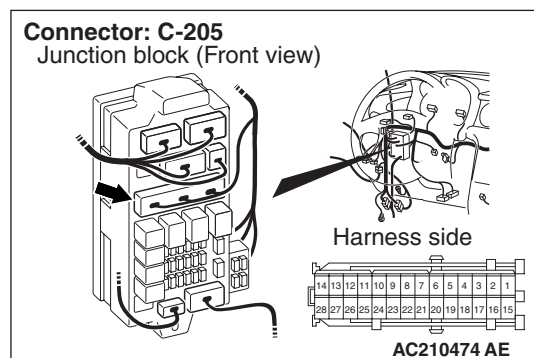
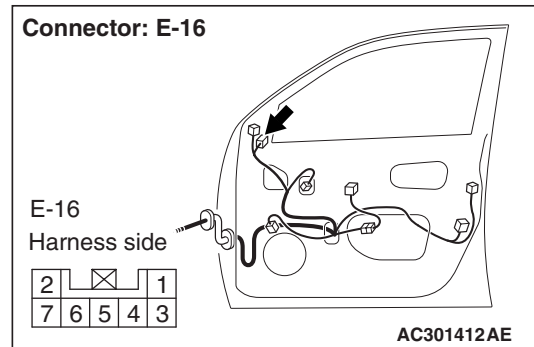


Q: Is the check result normal?

YES : Go to Step 8.

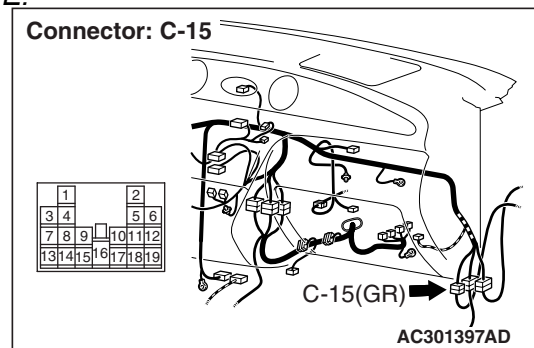
NO : Repair the defective connector.

STEP 8. Check the wiring harness between E-16 door mirror assembly (RH) connector terminal No.1 and C-205 junction block connector terminal No.3.



- Check the power supply line for open circuit.

NOTE:

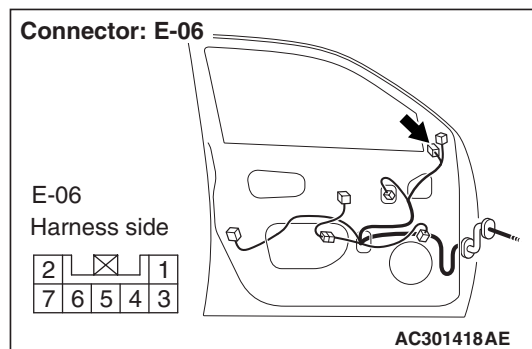


Prior to the wiring harness inspection, check intermediate connector C-15, and repair if necessary.

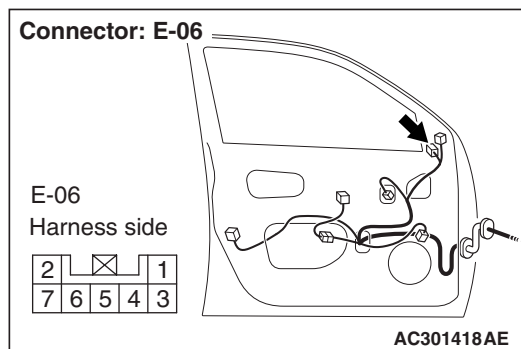
Q: Is the check result normal?

YES : Intermittent malfunction (Refer to GROUP 00 – How to Cope with Intermittent Malfunction [P.00-6](#)).

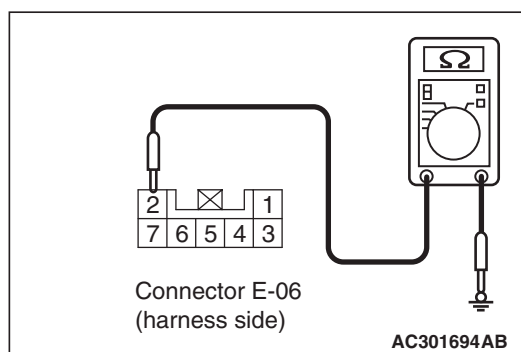
NO : Repair the wiring harness.

STEP 9. Connector check: E-06 door mirror assembly (LH) connector**Q: Is the check result normal?****YES :** Go to Step 10.**NO :** Repair the defective connector.**STEP 10. Check the door mirror assembly (LH).**

Check that the heater element of the door mirror assembly (LH) is in good condition (Refer to the heated door mirror check [P.51-57](#)).

Q: Is the check result normal?**YES :** Go to Step 11.**NO :** Replace the door mirror assembly (LH).**STEP 11. Resistance measurement at the E-06 door mirror assembly (LH) connector.**

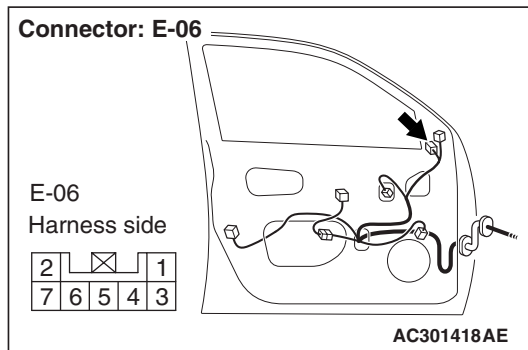
- (1) Disconnect the connector, and measure at the wiring harness side.



- (2) Resistance between E-06 door mirror assembly connector terminal No.2 and body earth

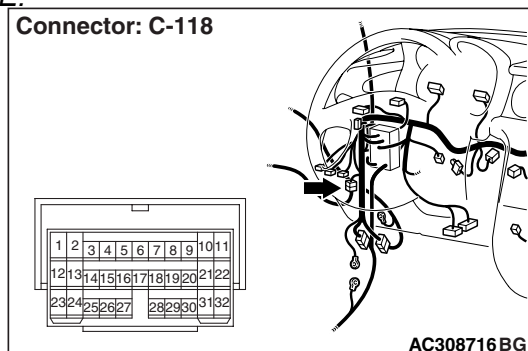
OK: 2 Ω or less**Q: Is the check result normal?****YES :** Go to Step 14.**NO :** Go to Step 12.

STEP 12. Check the wiring harness between E-06 door mirror assembly (LH) connector terminal No.2 and body earth.



- Check the earth wires for open circuit.

NOTE:



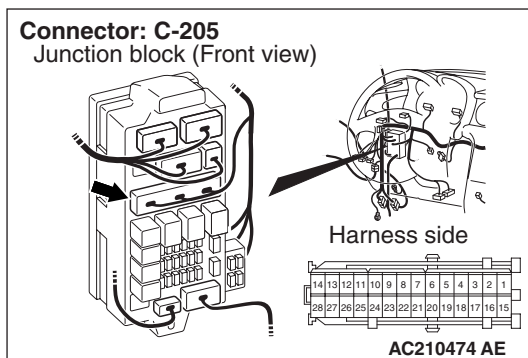
Prior to the wiring harness inspection, check intermediate connector C-118, and repair if necessary.

Q: Is the check result normal?

YES : Intermittent malfunction (Refer to GROUP 00 – How to Cope with Intermittent Malfunction [P.00-6](#)).

NO : Repair the wiring harness.

STEP 13. Connector check: C-205 junction block connector



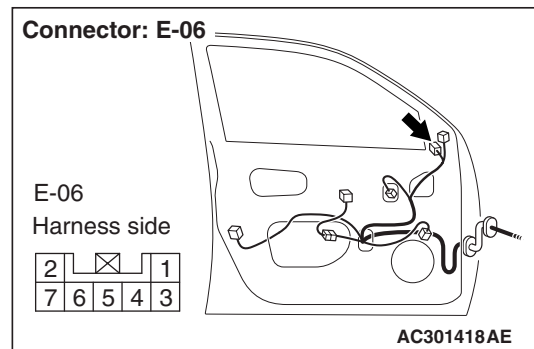
Q: Is the check result normal?

YES : Go to Step 14.

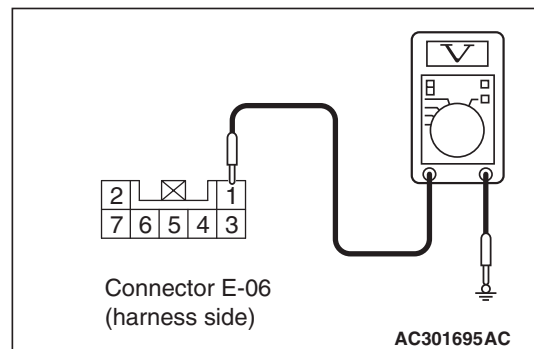
NO : Repair the defective connector.

STEP 14. Voltage measurement at the E-06 door mirror assembly (LH) connector.

- (1) Turn the ignition switch to the ON position.
- (2) Defogger switch: ON



- (3) Disconnect the connector, and measure at the wiring harness side.



- (4) Voltage between E-06 door mirror assembly connector terminal No.1 and body earth

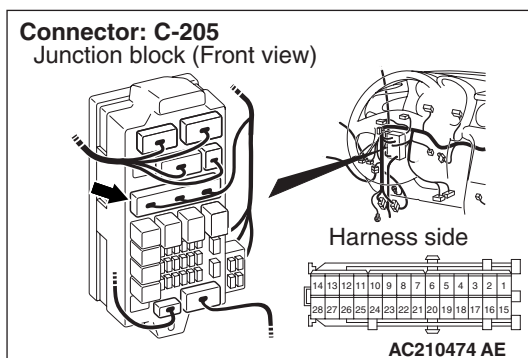
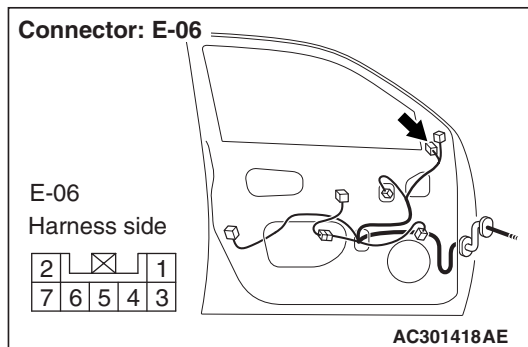
OK: System voltage

Q: Is the check result normal?

YES : Intermittent malfunction (Refer to GROUP 00 – How to Cope with Intermittent Malfunction [P.00-6](#)).

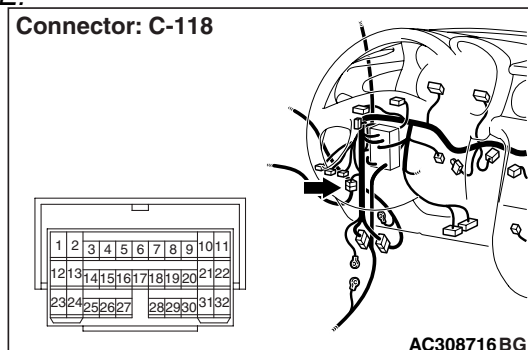
NO : Go to Step 15.

STEP 15. Check the wiring harness between E-06 door mirror assembly (LH) connector terminal No.1 and C-205 junction block connector terminal No.3.



- Check the power supply line for open circuit.

NOTE:



Prior to the wiring harness inspection, check intermediate connector C-118, and repair if necessary.

Q: Is the check result normal?

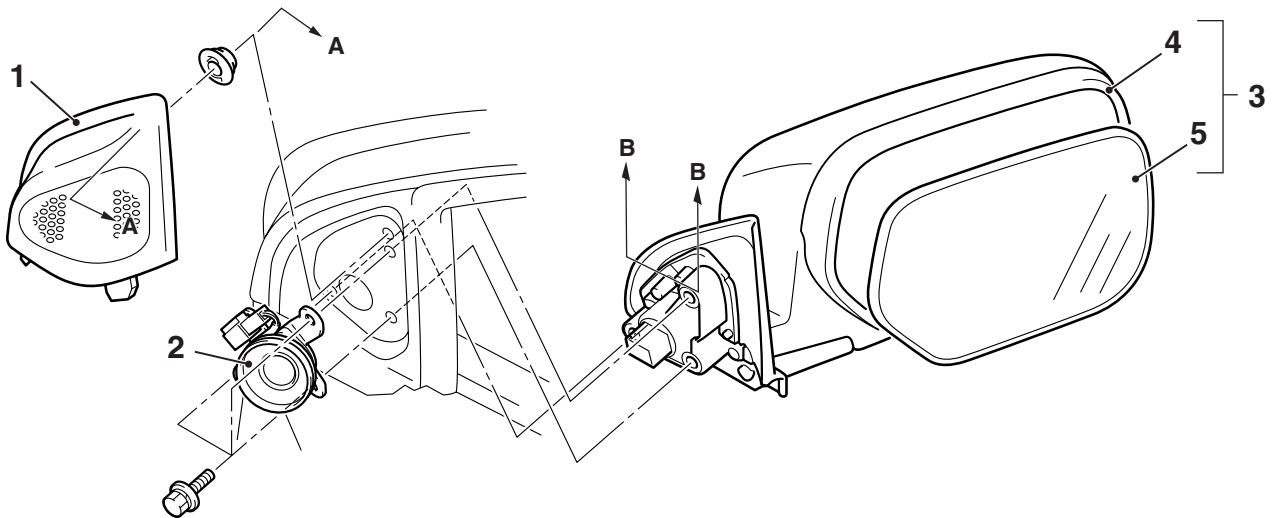
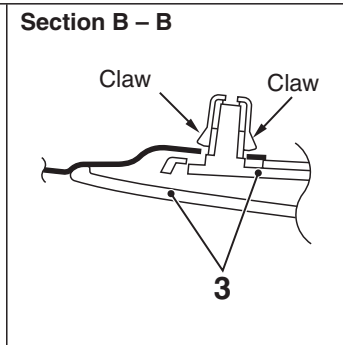
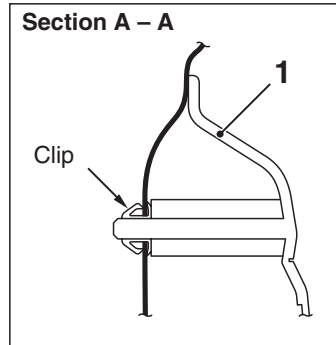
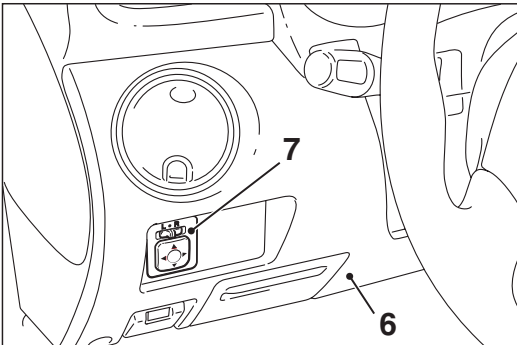
YES : Intermittent malfunction (Refer to GROUP 00 – How to Cope with Intermittent Malfunction P.00-6).

NO : Repair the wiring harness.

DOOR MIRROR

REMOVAL AND INSTALLATION

M1511006400836



AC201696 AB

Door mirror removal steps

- >>A<< 1. Delta cover
2. Tweeter
>>B<< 3. Door mirror assembly
4. Door mirror body assembly
<<A>> 5. Mirror

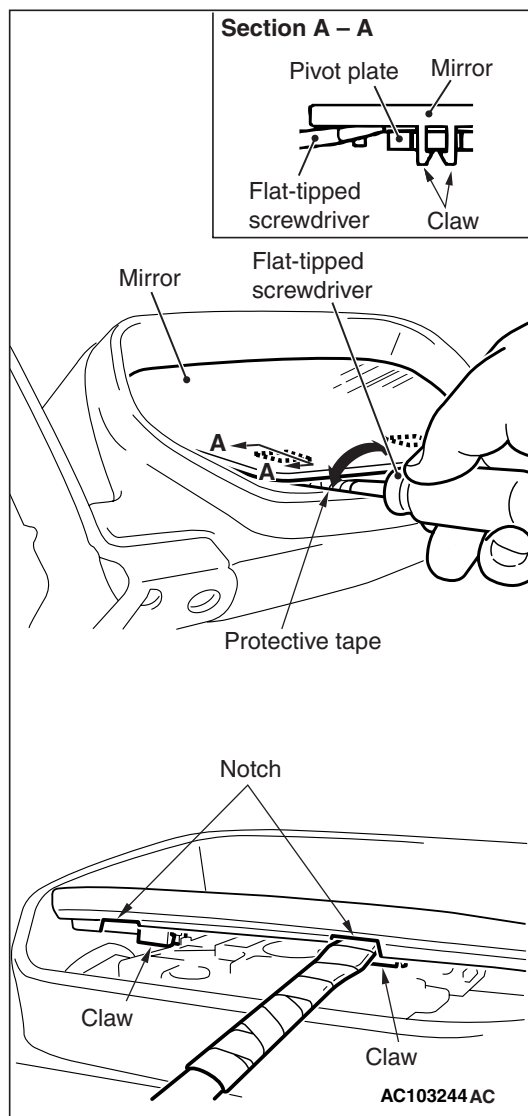
Remote controlled mirror switch removal steps

6. Instrument panel lower cover (Refer to GROUP 52A, Instrument panel P.52A-2)
7. Remote controlled mirror switch

REMOVAL SERVICE POINT

<<A>> MIRROR REMOVAL

⚠ CAUTION



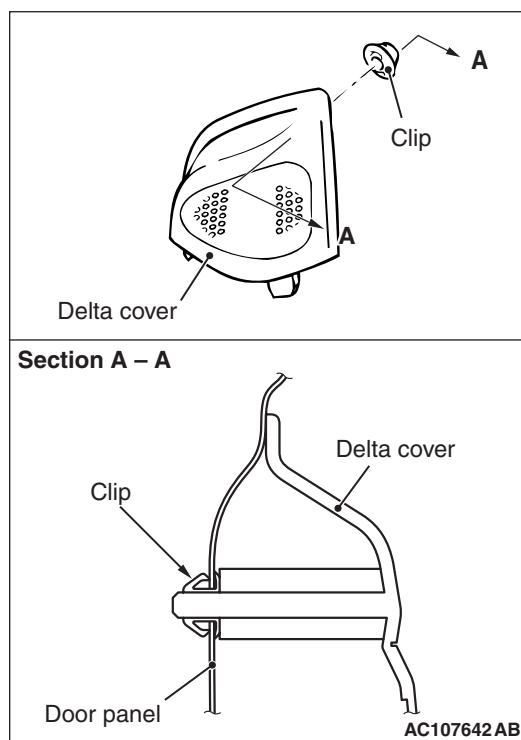
The claws of the mirror are prone to breakage when working in cold temperatures. Always warm up the mirror claws and their periphery to 20°C or higher before handling.

Slant the mirror upward with your hands. Then insert a flat-tipped screwdriver wrapped with protective tape between the pivot plate and mirror through the cut-out from behind the mirror. Now pry off the mirror claw and remove the mirror as shown.

INSTALLATION SERVICE POINTS

>>A<< DELTA COVER INSTALLATION

⚠ CAUTION

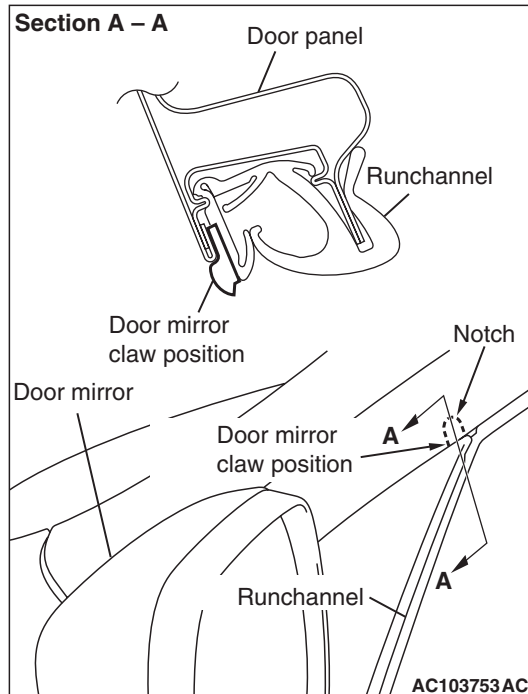


If the delta cover is placed with the clip on the door panel, the clip may be pushed into the door panel and fall off. Therefore, special care is necessary.

Install the delta cover with the clip installed.

>>B<< DOOR MIRROR ASSEMBLY INSTALLATION

CAUTION

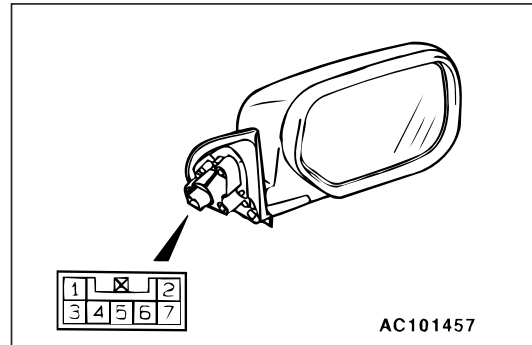


When assembling the door mirror, check to see that the claw of the door mirror is inserted in the cut-out of the front door runchannel.

INSPECTION

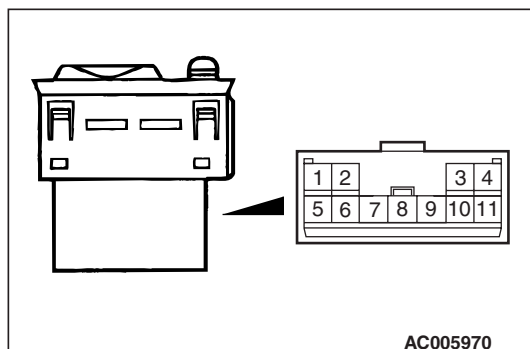
M1511006500350

ELECTRIC REMOTE CONTROL MIRROR OPERATION CHECK



Check that the mirror moves as described in the table when each terminal is connected to the battery.

Battery connection	Direction operation
<ul style="list-style-type: none"> Connect terminal 5 to the negative battery terminal. Connect terminal 7 to the positive battery terminal. 	Up
<ul style="list-style-type: none"> Connect terminal 5 to the positive battery terminal. Connect terminal 7 to the negative battery terminal. 	Down
<ul style="list-style-type: none"> Connect terminal 5 to the negative battery terminal. Connect terminal 6 to the positive battery terminal. 	Right
<ul style="list-style-type: none"> Connect terminal 5 to the positive battery terminal. Connect terminal 6 to the negative battery terminal. 	Left

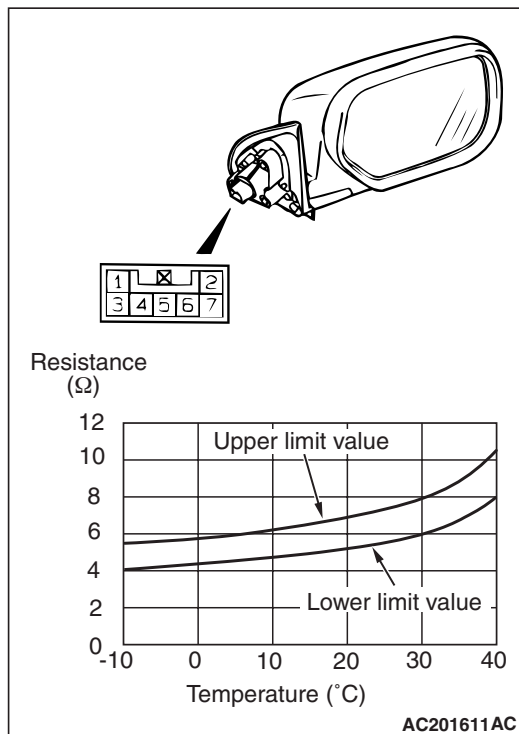
DOOR MIRROR CONTROL SWITCH
CONTINUITY CHECK

Switch position		Tester connection	Specified condition
OFF		9 – 2, 9 – 3, 9 – 6, 9 – 10, 9 – 11, 1 – 2, 1 – 3, 1 – 6, 1 – 10, 1 – 11	Open circuit
Left side	OFF	9 – 6, 9 – 10, 9 – 11, 1 – 6, 1 – 10, 1 – 11	Open circuit
	Up	1 – 6, 9 – 11	Less than 2 ohms
	Down	1 – 11, 6 – 9	
	Right	1 – 6, 9 – 10	
	Left	1 – 10, 6 – 9	
Right side	OFF	9 – 2, 9 – 3, 9 – 6, 1 – 2, 1 – 3, 1 – 6	Open circuit
	Up	1 – 6, 3 – 9	Less than 2 ohms
	Down	1 – 3, 6 – 9	
	Right	1 – 6, 2 – 9	
	Left	1 – 2, 6 – 9	

HEATED DOOR MIRROR CHECK

⚠ CAUTION

When relocating the car between locations with extremely different temperatures (warm and cold), leave the car in the location for a while to adapt to the temperature prior to checking it.



Check to see that the resistance shown in the graph is almost satisfied when measuring the resistance of terminal 1 and 2 of the door mirror connectors under 2 or more different temperature conditions.