
GROUP 1

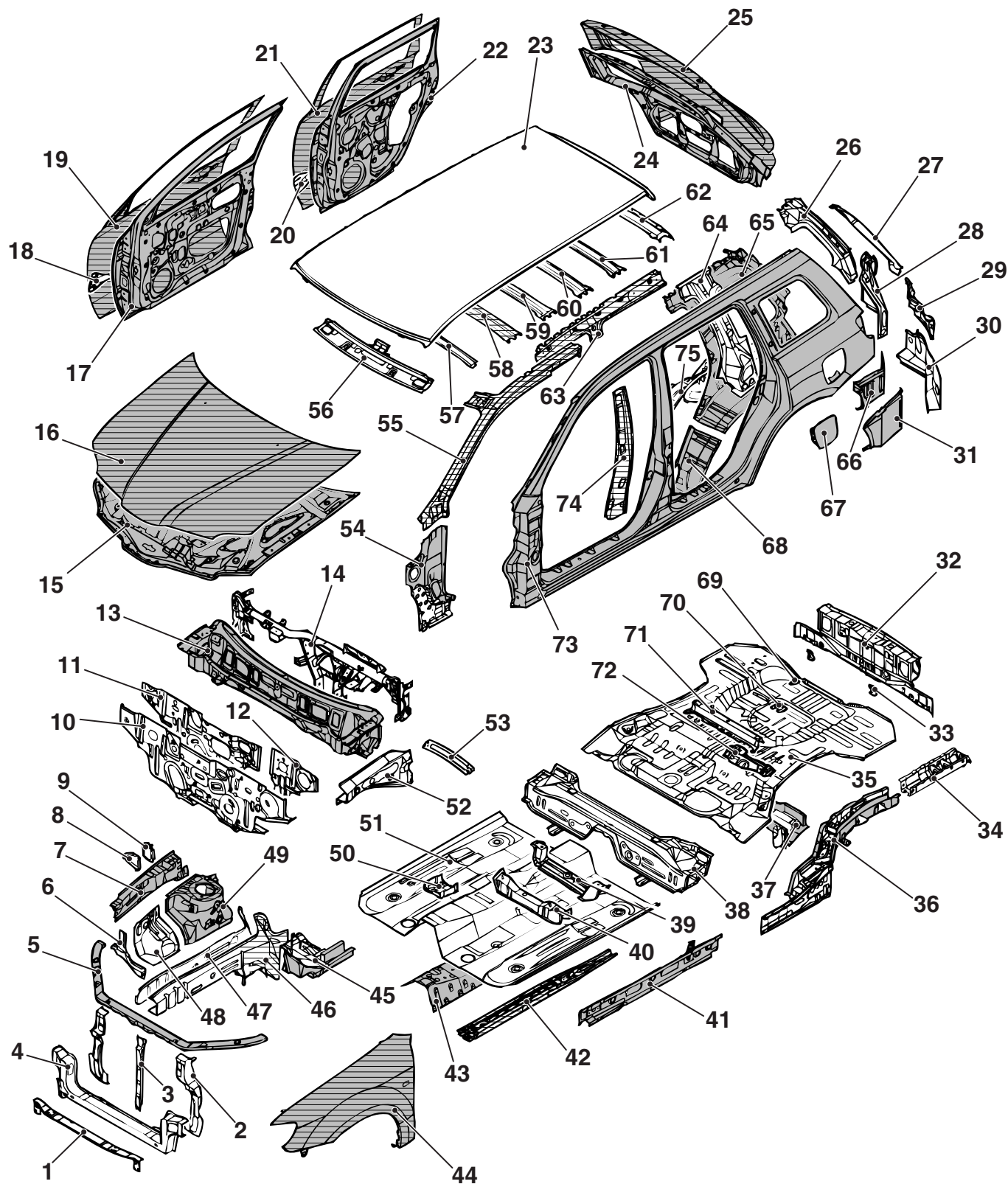
BODY CONSTRUCTION

CONTENTS

BODY COMPONENTS.....	1-2	ROOF	1-18
		UNDER BODY.....	1-19
BODY MAIN CROSS-SECTIONAL VIEWS	1-4	DOOR	1-22
MAINTENANCE, SERVICEABILITY .	1-6	SILENCER APPLICATION LOCATIONS	1-23
BODY CONSTRUCTION CHARACTERISTICS	1-8	LOCATIONS USING URETHANE FOAM AND FOAM MATERIAL	1-24
FRONT BODY.....	1-8		
SIDE BODY.....	1-14	STIFFENER AND DAMP SHEET APPLICATION LOCATIONS	1-27
REAR BODY.....	1-17		

BODY COMPONENTS

M4010001000306



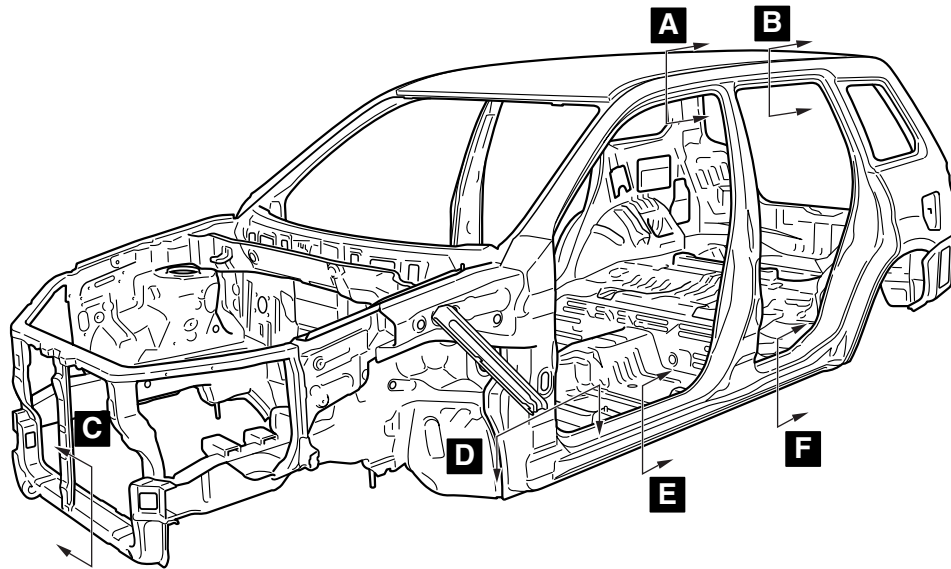
■ : Anti-corrosion steel panels
 ▨ : High-tensile steel panels

AB400049AD

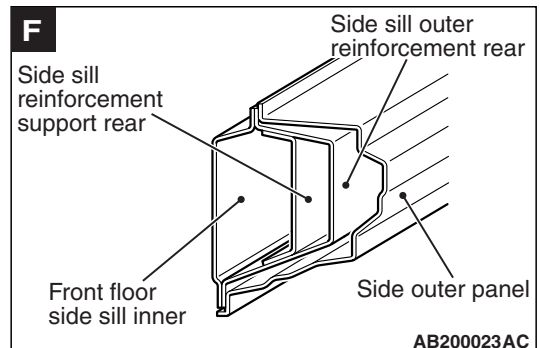
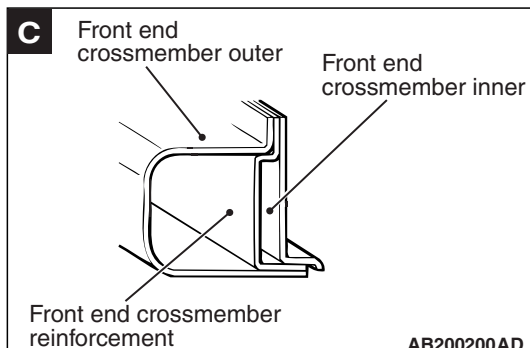
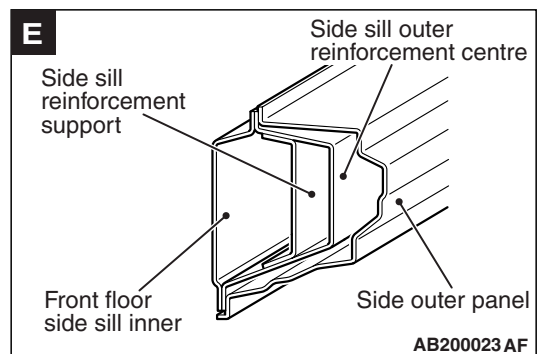
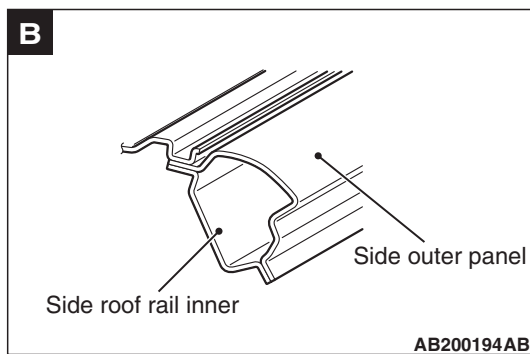
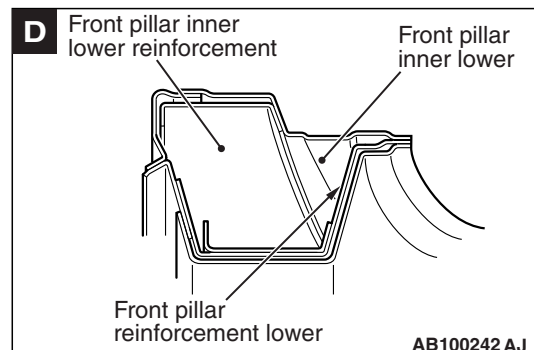
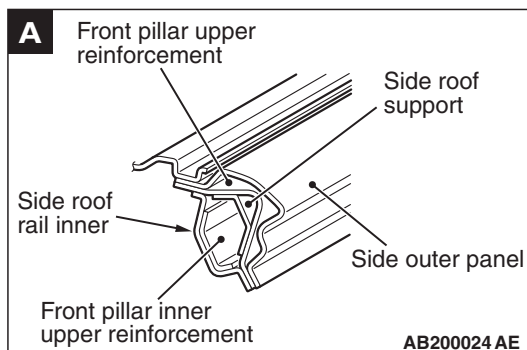
- | | |
|-------------------------------------|---|
| 1. Front bumper reinforcement | 39. Front floor crossmember rear |
| 2. Headlamp support panel | 40. Front floor crossmember front |
| 3. Hood lock stay | 41. Front floor side sill inner |
| 4. Front end crossmember | 42. Front floor sidemember |
| 5. Front end upper bar | 43. Backbone reinforcement |
| 6. Headlamp support panel side | 44. Fender panel |
| 7. Front upper frame inner | 45. Front sidemember rear |
| 8. Upper frame bulkhead front | 46. Front sidemember inner |
| 9. Upper frame bulkhead | 47. Front sidemember outer |
| 10. Dash panel | 48. Front fender shield |
| 11. Dash panel silencer | 49. Spring house panel |
| 12. Dash panel reinforcement | 50. Instrument panel centre reinforcement bracket |
| 13. Cowl top panel | 51. Front floor pan |
| 14. Front deck crossmember | 52. Front upper frame extension outer |
| 15. Hood inner panel | 53. Upper frame to front pillar brace |
| 16. Hood outer panel | 54. Front pillar inner lower |
| 17. Front door inner panel | 55. Front pillar inner upper |
| 18. Front door side door beam | 56. Roof rail front |
| 19. Front door outer panel | 57. Roof bow front |
| 20. Rear door side door beam | 58. Roof bow centre |
| 21. Rear door outer panel | 59. Roof bow A |
| 22. Rear door inner panel | 60. Roof bow B |
| 23. Roof panel | 61. Roof bow C |
| 24. Tailgate inner panel | 62. Roof rail rear |
| 25. Tailgate outer panel | 63. Side roof rail inner |
| 26. Gate pillar reinforcement | 64. Rear pillar reinforcement |
| 27. Quarter outer extension upper | 65. Quarter inner panel |
| 28. Quarter inner extension | 66. Quarter inner extension lower |
| 29. Rear lamp housing upper | 67. Fuel filler door |
| 30. Rear lamp housing lower | 68. Quarter inner extension front |
| 31. Quarter outer extension lower | 69. Heat protector bracket |
| 32. Rear end crossmember | 70. Spare tyre bracket |
| 33. Rear bumper bracket | 71. Rear floor crossmember upper |
| 34. Rear floor sidemember extension | 72. Child anchor bracket lower |
| 35. Rear floor pan | 73. Side outer panel |
| 36. Rear floor sidemember | 74. Centre pillar inner |
| 37. Upper arm crossmember | 75. Rear wheel house inner panel |
| 38. Rear floor extension | |

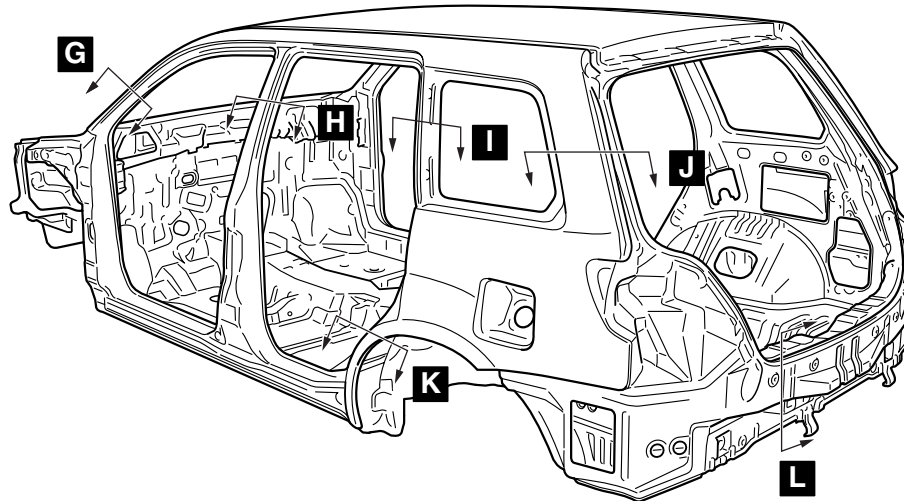
BODY MAIN CROSS-SECTIONAL VIEWS

M4010002000183

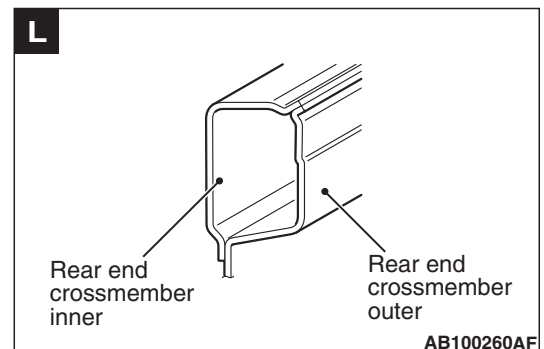
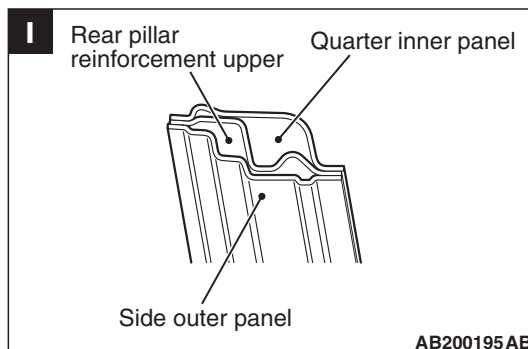
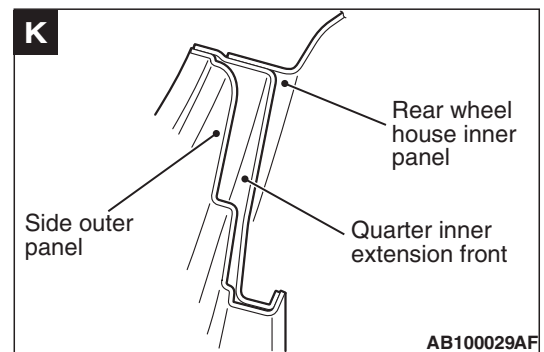
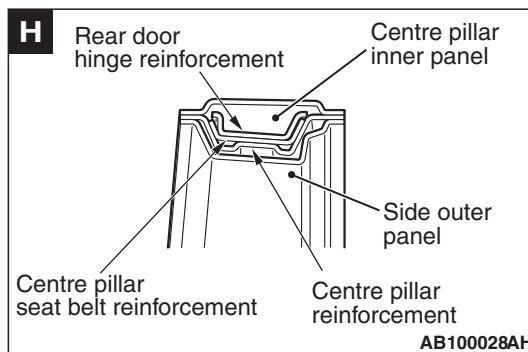
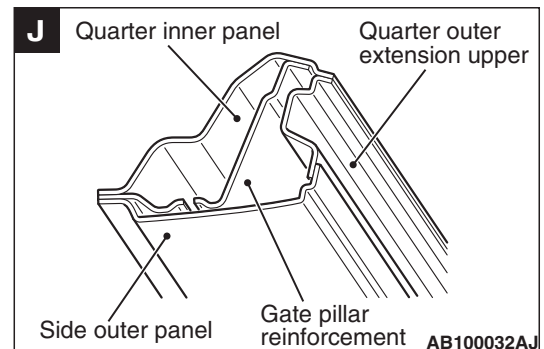
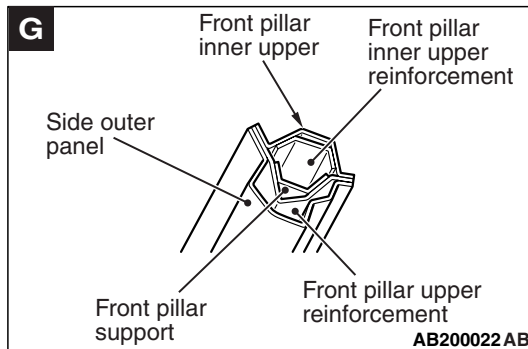


AB200199AC





AB200010AB

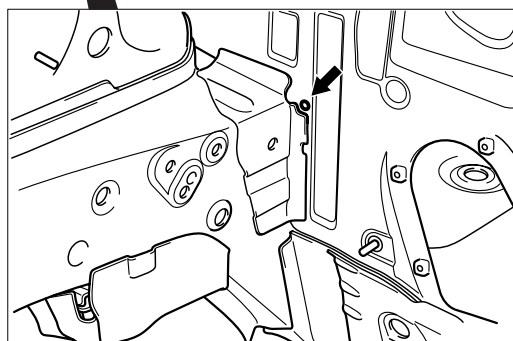
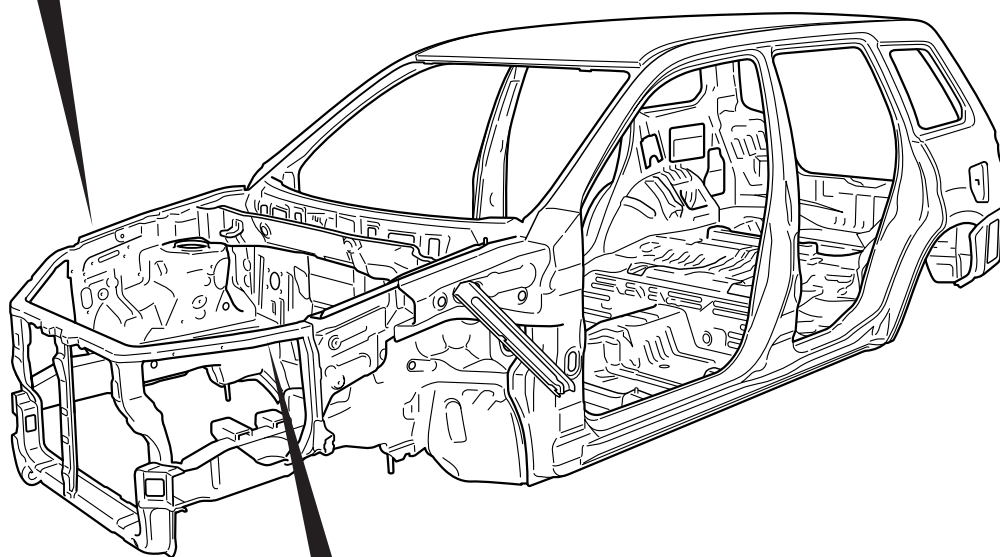
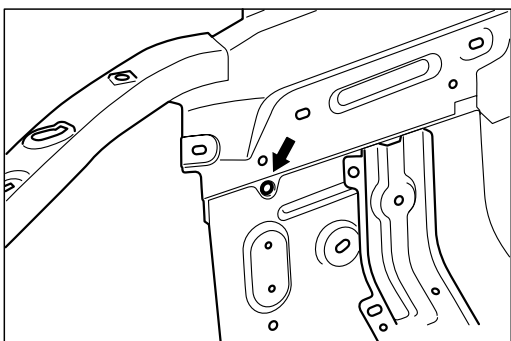


MAINTENANCE, SERVICEABILITY

M4010003000197

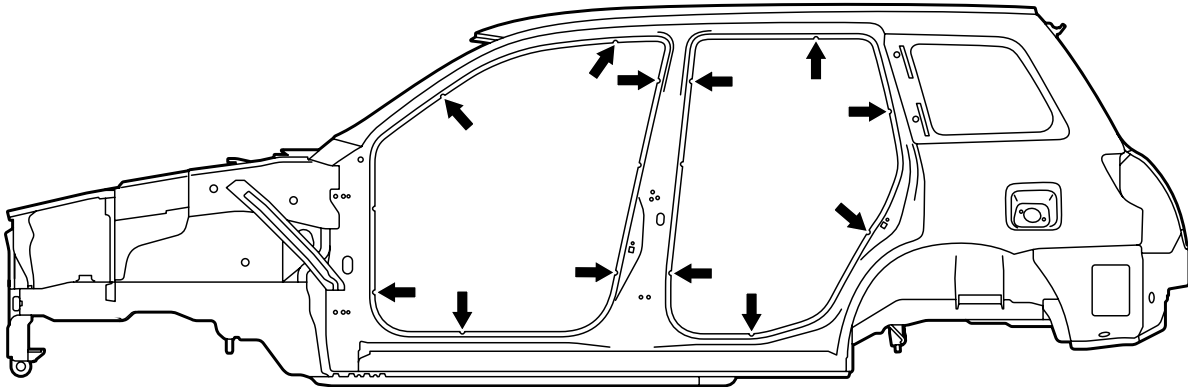
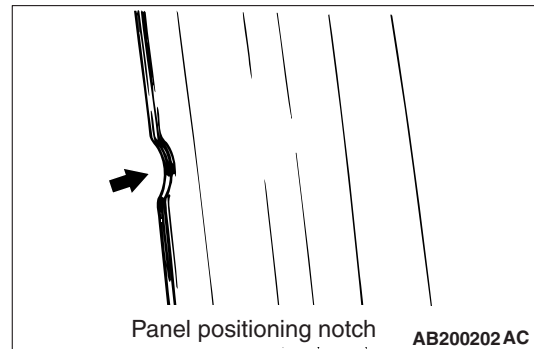
FENDER SHIELD

A positioning hole, marking and notch has been added on the front fender shield, front upper frame inner, front sidemember gusset rear and dash panel to improve assembling workability when replacing the panel.



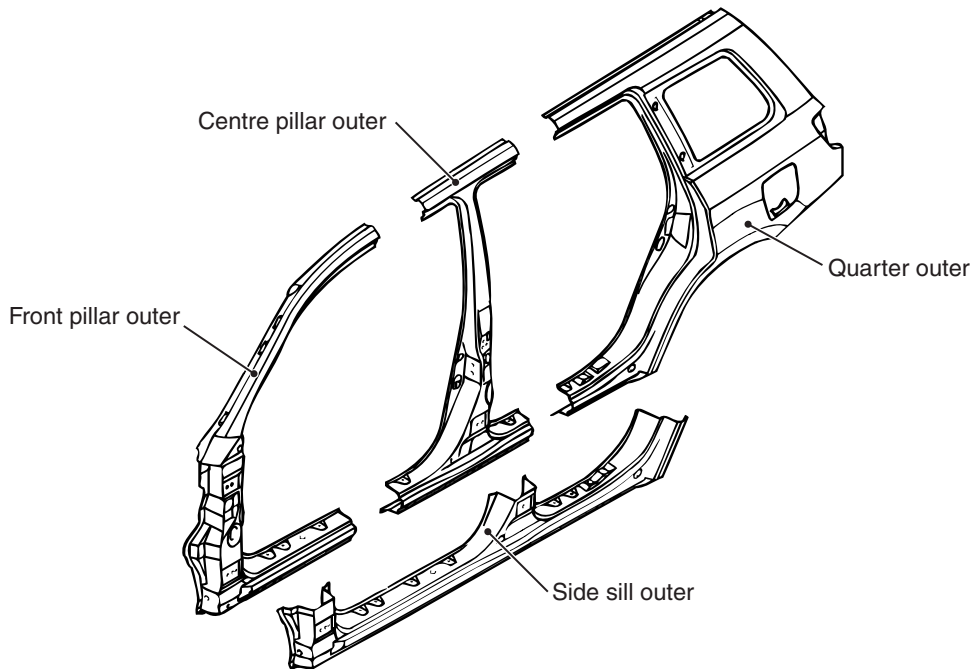
SIDE STRUCTURE

A panel positioning notch has been added on the door opening to improve assembling workability when replacing the panel.



SIDE OUTER PANEL

The extra parts are supplied in 4 different cut forms as a result of employing the integrated side-frame side outer panel.



BODY CONSTRUCTION CHARACTERISTICS

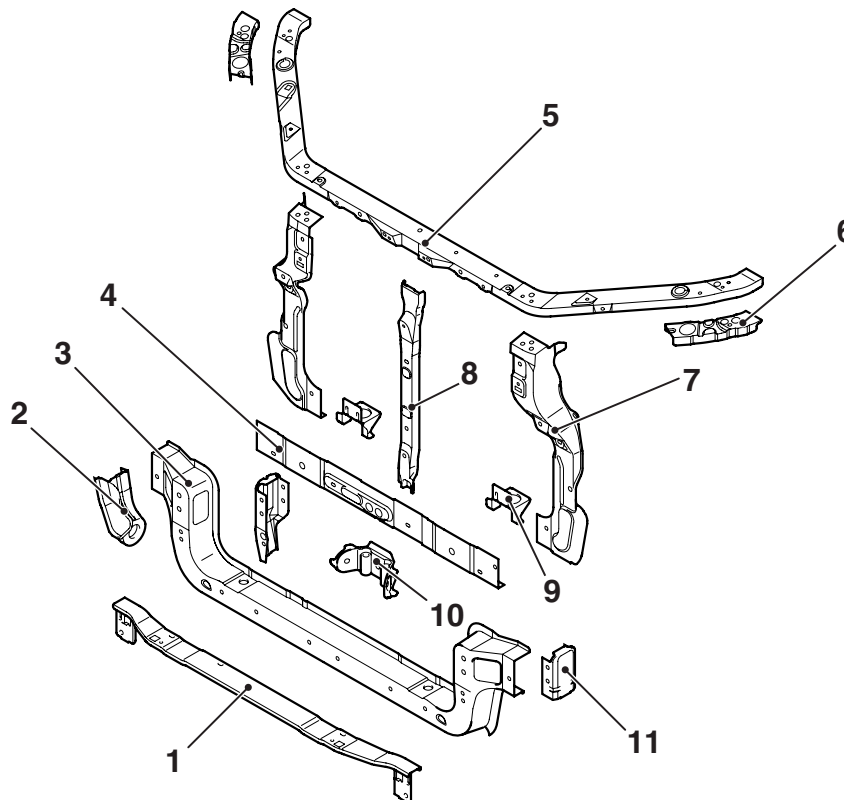
FRONT BODY

M4010010000821

NOTE: *: Steel plates with different thickness welded together to make one steel plate.

HEADLAMP SUPPORT

An uneven-thickness steel sheet* in which the sheet thickness is thicker on the shipping hook assembling side was employed for the front end crossmember outer to ensure rigidity of the shipping hook assembling area and to provide lightweightness.



AB400072 AB

- | | |
|--------------------------------------|---|
| 1. Front bumper reinforcement | 7. Hood lock stay |
| 2. Shipping hook | 8. Headlamp support panel |
| 3. Front end crossmember outer | 9. Radiator bracket |
| 4. Front end crossmember inner | 10. Front end crossmember reinforcement |
| 5. Front end upper bar | 11. Front end crossmember inner reinforcement |
| 6. Front end upper bar reinforcement | |

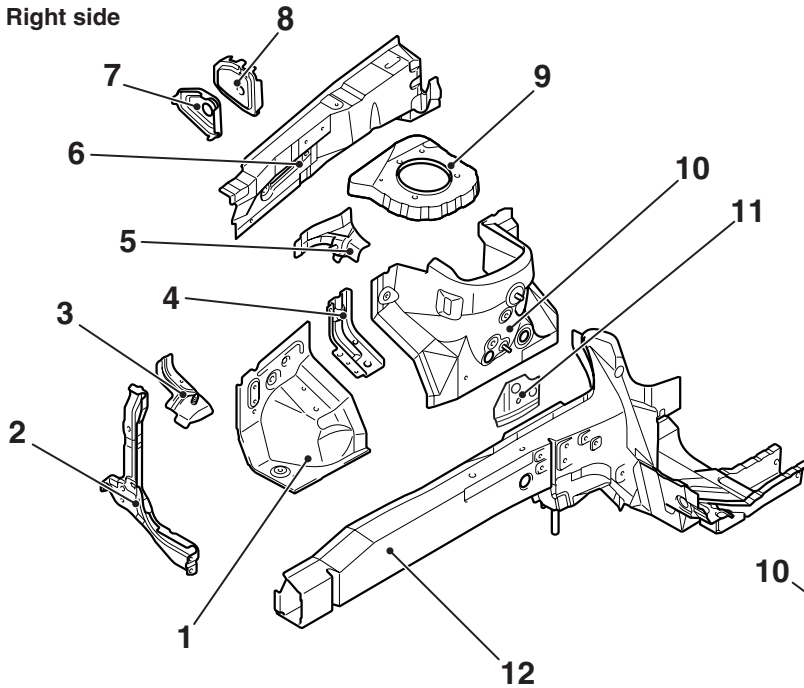
FENDER SHIELD

The front sidemember section is designed in large form to efficiently absorb energy upon impact. An uneven thickness steel sheet* in which the sheet thickness is thicker on the cabin side was employed for the front sidemember inner to ensure safety upon impact, body rigidity and lightweightness.

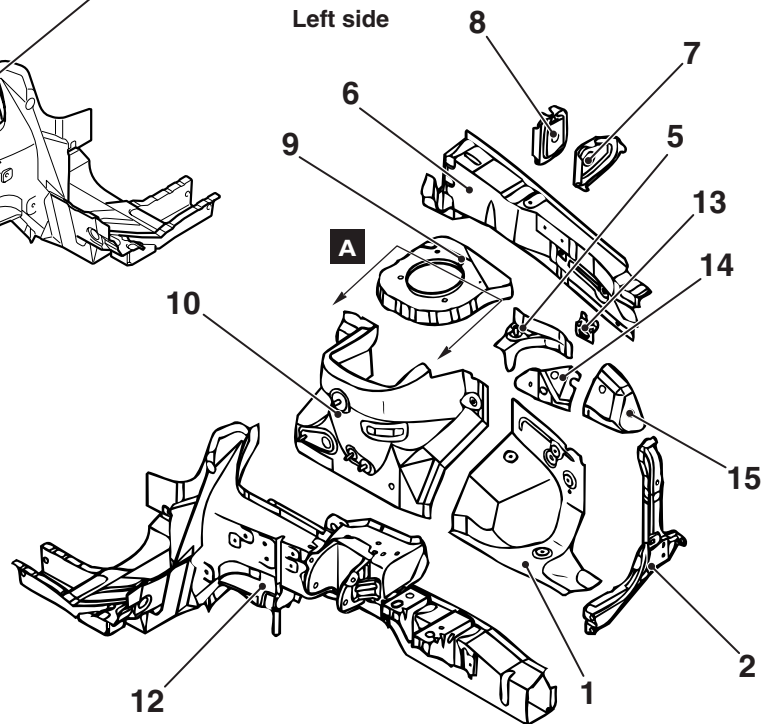
The engine mount plate has been added to improve rigidity of the engine mounting point.

*NOTE: *: Steel plates with different thickness welded together to make one steel plate.*

Right side

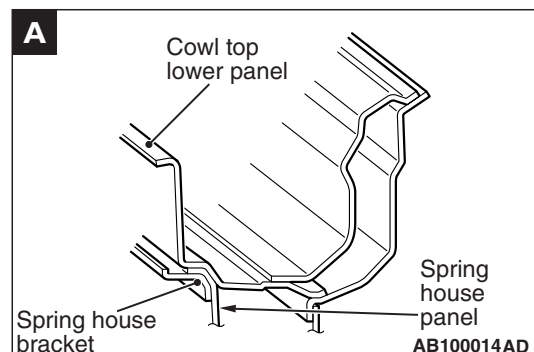


Left side



AB301575 AB

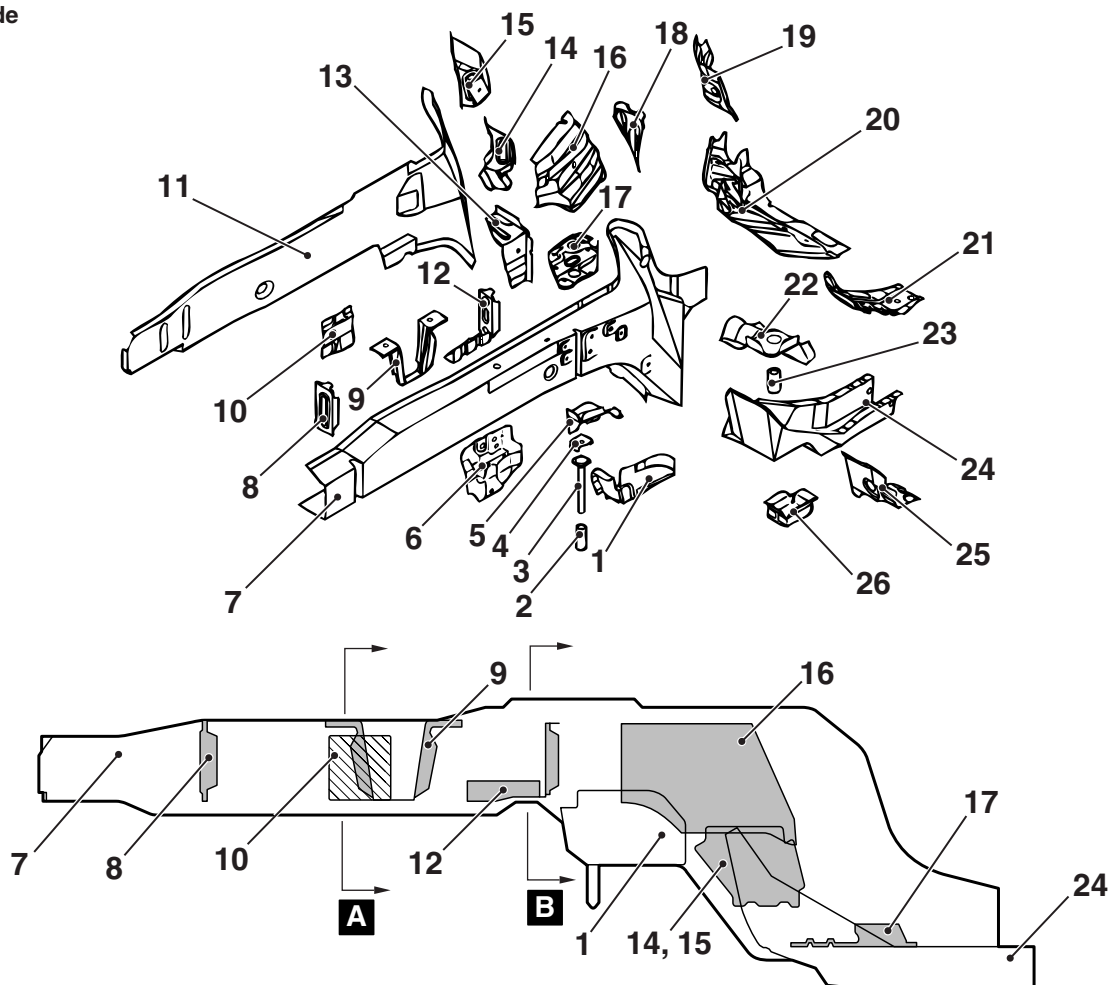
1. Front fender shield
2. Headlamp support panel side
3. Engine mount reinforcement plate
4. Engine mount reinforcement
5. Spring house bracket reinforcement
6. Front upper frame inner
7. Upper frame bulkhead front
8. Upper frame bulkhead
9. Spring house bracket
10. Spring house panel
11. Engine mount plate
12. Front sidemember
13. Relay box bracket
14. Transmission mount reinforcement plate rear
15. Transmission mount reinforcement



The design features the spring house panel surface mounted with the cowl top lower panel to heighten body rigidity of the suspension assembling support area. This results in driving stability and silence.

FRONT SIDEMEMBER REINFORCEMENT

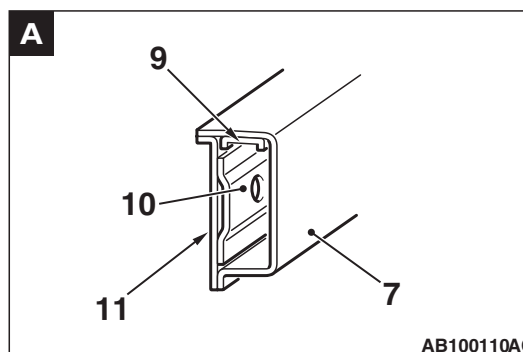
Right side



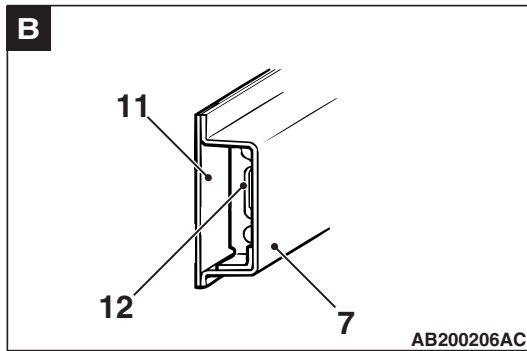
AB100847AD

AB400097AB

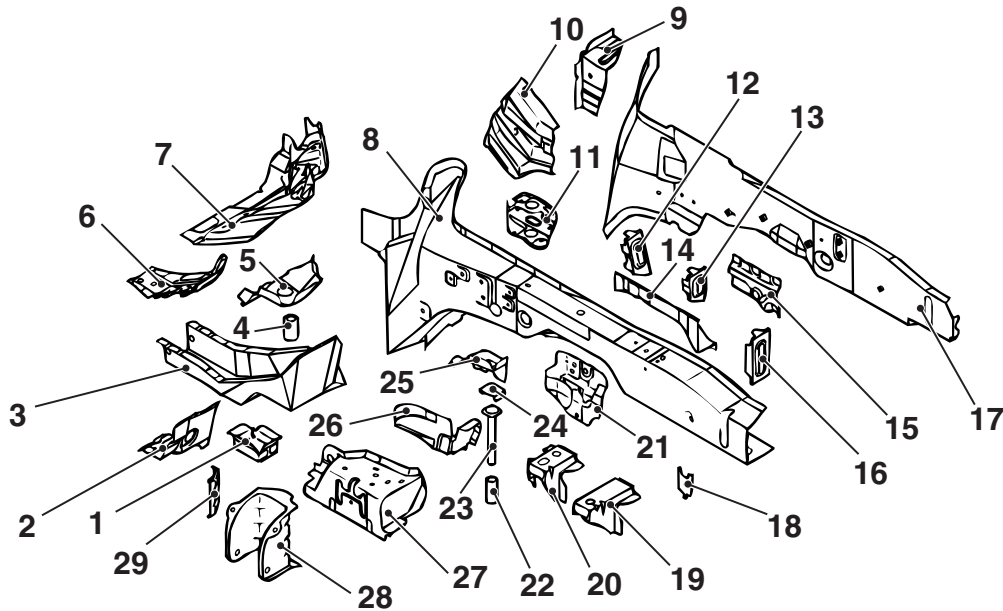
- | | |
|---|--|
| 1. Suspension crossmember bracket inner | 20. Dash panel extension |
| 2. Pipe | 21. Dash panel extension reinforcement |
| 3. Square head bolt | 22. Pipe support rear |
| 4. Retainer | 23. Pipe nut |
| 5. Pipe support front | 24. Front sidemember rear |
| 6. Suspension crossmember extension outer | 25. Dash crossmember extension |
| 7. Front sidemember inner | 26. Suspension crossmember support bracket |
| 8. Front sidemember bulkhead (A) | |
| 9. Front sidemember bulkhead | |
| 10. Front sidemember outer reinforcement | |
| 11. Front sidemember outer | |
| 12. Front sidemember inner reinforcement lower | |
| 13. Front sidemember gusset rear | |
| 14. Front sidemember outer reinforcement rear (A) | |
| 15. Front sidemember outer reinforcement rear (B) | |
| 16. Front sidemember inner reinforcement | |
| 17. Tie down reinforcement | |
| 18. Front sidemember inner upper reinforcement | |
| 19. Dash panel extension upper | |



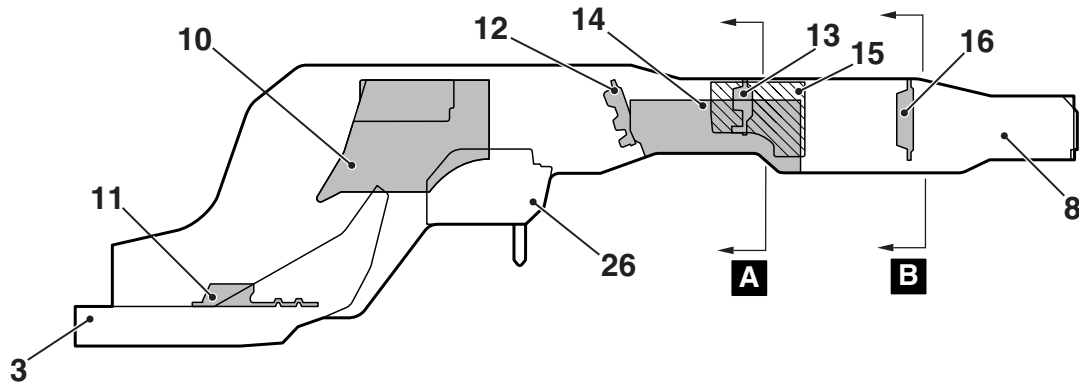
AB100110AC



Left side



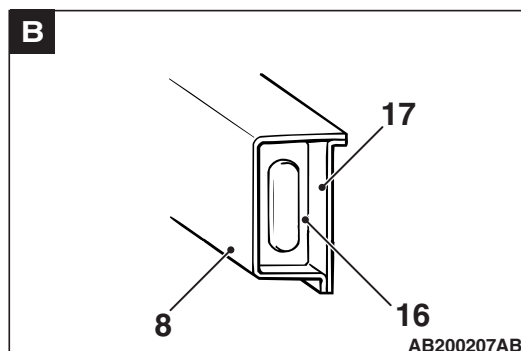
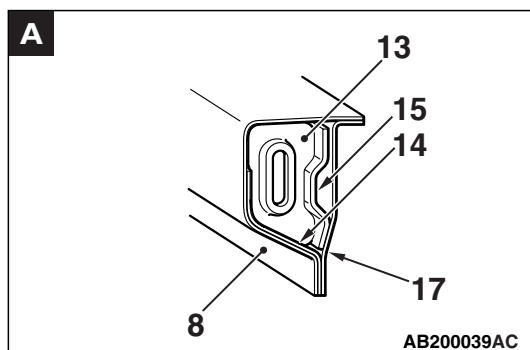
AB100848 AC



AB400098AB

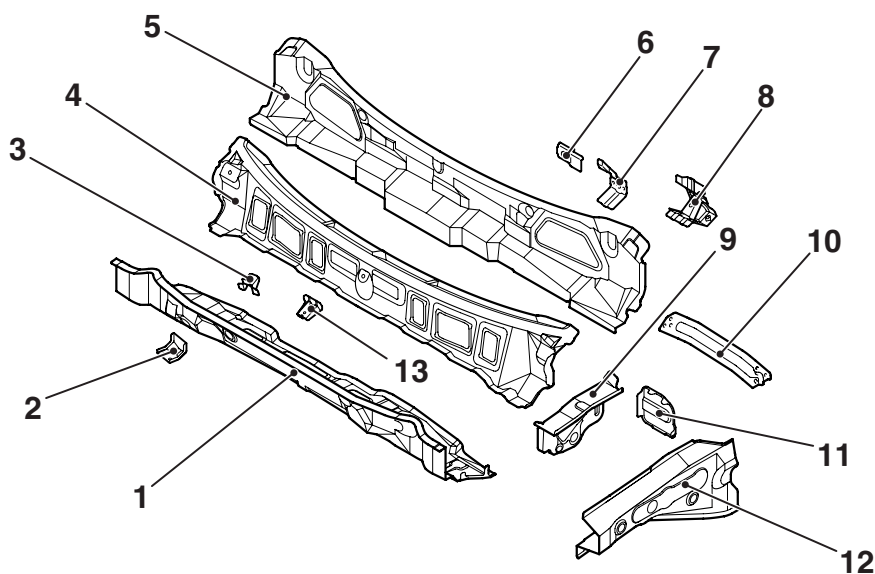
- | | |
|---|--|
| 1. Suspension crossmember support bracket | 15. Front sidemember outer reinforcement |
| 2. Dash crossmember extension | 16. Front sidemember bulkhead (A) |
| 3. Front sidemember rear | 17. Front sidemember outer |
| 4. Pipe nut | 18. Condenser tank bracket |
| 5. Pipe support rear | 19. Battery bracket front |
| 6. Dash panel extension reinforcement | 20. Battery bracket rear |
| 7. Dash panel extension | 21. Suspension crossmember extension outer |
| 8. Front sidemember inner | 22. Pipe |
| 9. Front sidemember gusset rear | 23. Square head bolt |
| 10. Front sidemember inner reinforcement | 24. Retainer |
| 11. Tie down reinforcement | 25. Pipe support front |
| 12. Front sidemember bulkhead rear | 26. Suspension crossmember bracket inner |
| 13. Front sidemember bulkhead front | 27. Transmission mount reinforcement |
| 14. Front sidemember inner reinforcement | |

- 28. Transmission mount bracket
- 29. Transmission mount reinforcement rear



FRONT DECK

The cowl top panel features a closed section structure. A bulkhead was added inside the upper frame extension. Further, an upper frame to front pillar brace was added to connect the upper frame extension and front pillar. The aim for this structure is to improve safety upon impact and driving stability. The front upper frame extension outer has been thickened to improve rigidity of the suspension mounting point.

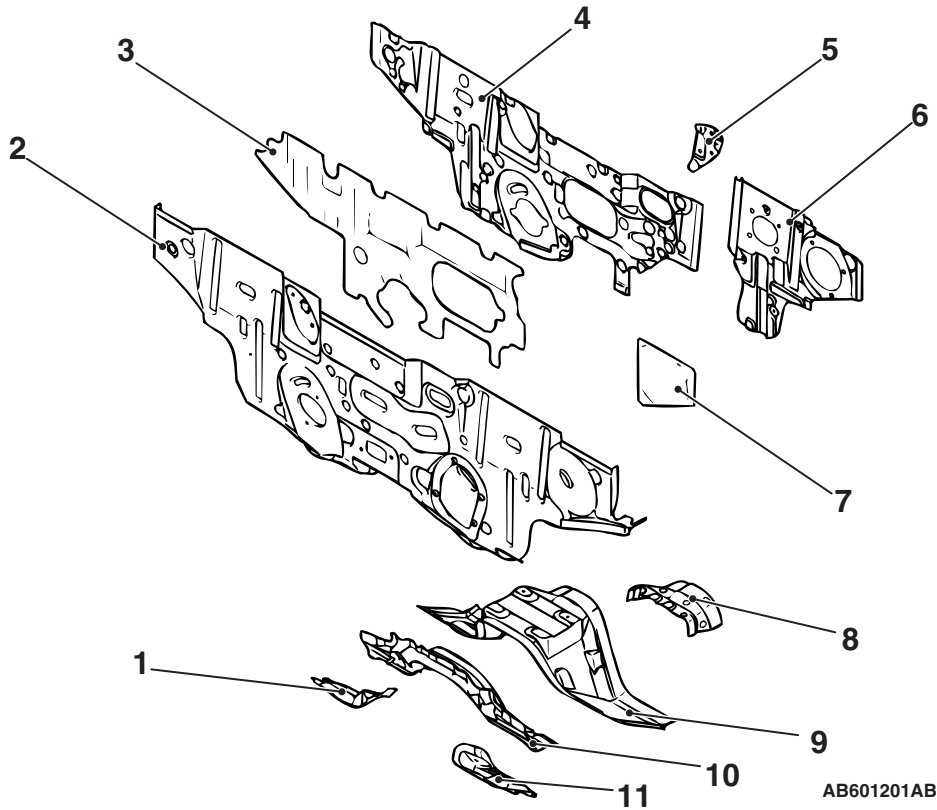


AB601200AB

- | | |
|-------------------------------------|---------------------------------------|
| 1. Cowl top lower panel | 8. Clutch pedal support bracket |
| 2. Brake oil reservoir tank bracket | 9. Upper frame extension inner |
| 3. Wiper bracket | 10. Upper frame to front floor brace |
| 4. Cowl top upper panel | 11. Upper frame bulkhead rear |
| 5. Cowl top inner panel | 12. Front upper frame extension outer |
| 6. A/C unit bracket | 13. Wiper bracket centre |
| 7. Deck stay bracket | |

DASH PANEL

- Floor deformation upon impact was reduced by featuring a thicker dash panel lower steel sheet and adding a dash panel crossmember to improve safety upon impact.
- A silencer was added between the dash panel and dash silencer panel to suppress noise and vibration from the engine.



- | | |
|------------------------------------|------------------------------------|
| 1. Dash panel reinforcement lower | 7. Dash silencer side |
| 2. Dash panel | 8. Dash reinforcement lower |
| 3. Dash silencer centre | 9. Dash panel lower |
| 4. Dash silencer panel | 10. Dash panel crossmember |
| 5. Accelerator pedal reinforcement | 11. Dash panel reinforcement lower |
| 6. Dash panel reinforcement | |

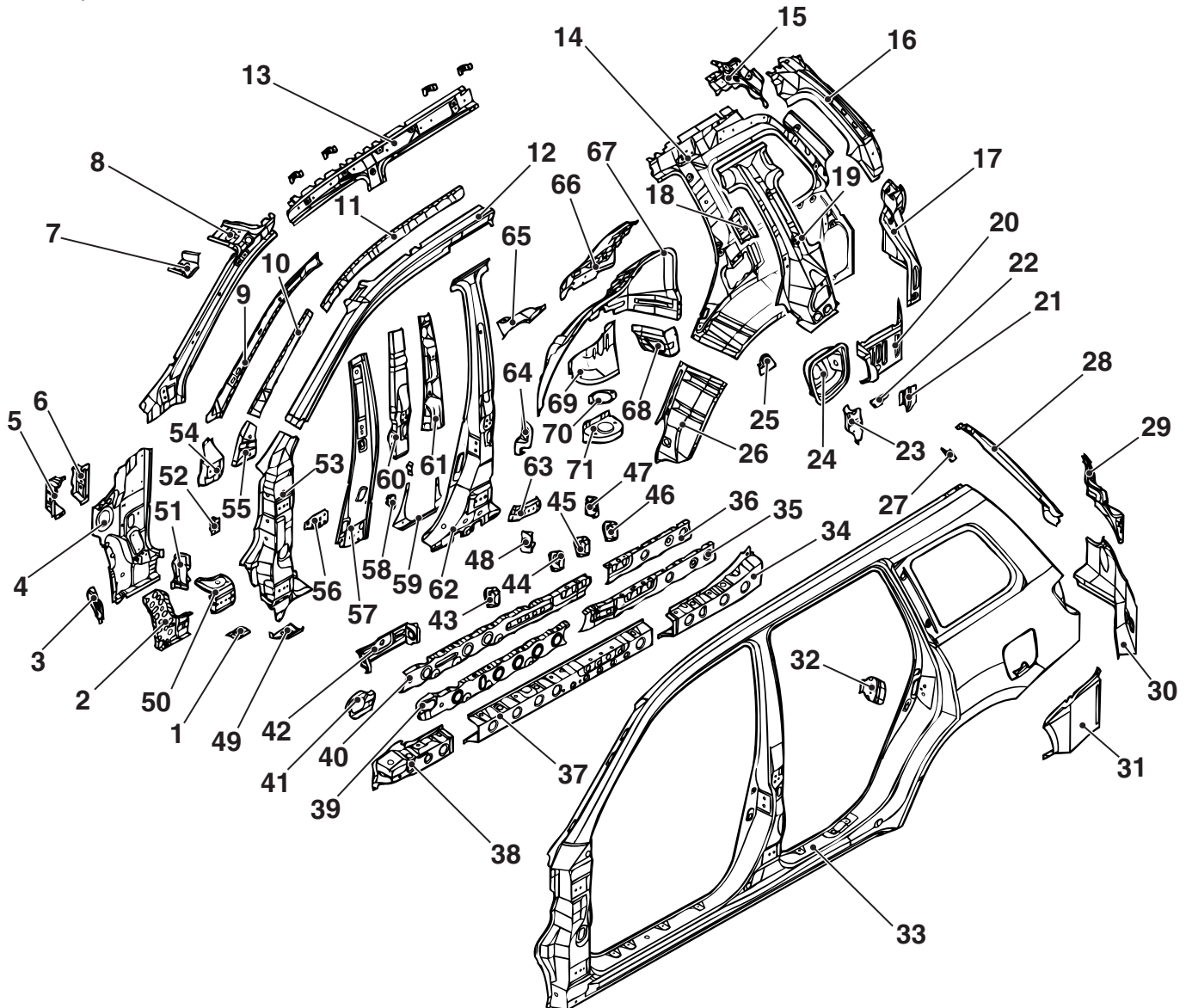
SIDE BODY

M4010011000170

SIDE STRUCTURE

- The rear suspension spring assembling area (spring house reinforcement, spring house bracket plate, and spring house bracket) was placed in a lower position to improve front, rear, left and right direction rigidity and improve driving safety.

- Torsional rigidity was heightened and driving stability was improved by bonding the side outer panel and pillar reinforcement (front pillar reinforcement upper or rear pillar reinforcement upper) with the inner panel (side roof rail inner or quarter inner panel).



AB202344 AM

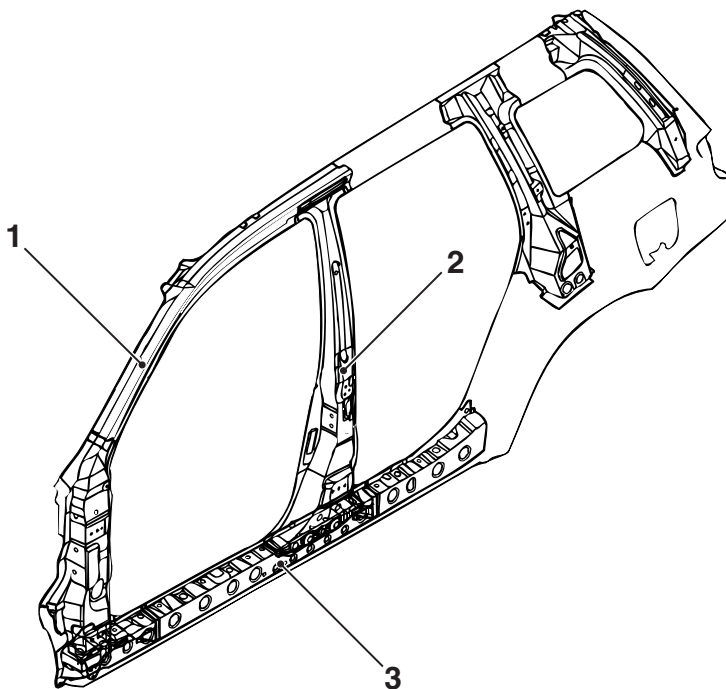
- | | |
|---|--|
| 1. Side sill to floor plate | 11. Side roof support |
| 2. Front pillar inner lower reinforcement | 12. Front pillar reinforcement upper |
| 3. Front pillar inner lower extension | 13. Side roof rail inner |
| 4. Front pillar inner lower | 14. Quarter inner panel |
| 5. Deck crossmember bracket front | 15. Quarter inner extension upper |
| 6. Deck crossmember bracket rear | 16. Gate pillar reinforcement |
| 7. Sun visor bracket | 17. Quarter inner extension |
| 8. Front pillar inner upper | 18. Seat belt reinforcement upper |
| 9. Front pillar inner upper reinforcement | 19. Rear pillar reinforcement upper |
| 10. Front pillar support | 20. Quarter inner extension lower |
| | 21. Canister bracket plate (Left side) |

22. Canister bracket (Left side)
23. Quarter inner plate
24. Fuel filler neck bracket (Left side)
25. Seat belt reinforcement lower
26. Quarter inner extension front
27. Gas spring reinforcement
28. Quarter outer extension upper
29. Rear lamp housing upper
30. Rear lamp housing lower
31. Quarter outer extension lower
32. Striker reinforcement
33. Side outer panel
34. Side sill outer reinforcement rear
35. Side sill reinforcement support rear (Left side)
36. Side sill reinforcement support rear (Right side)
37. Side sill outer reinforcement centre
38. Side sill outer reinforcement front
39. Side sill reinforcement support (Left side)
40. Side sill reinforcement support (Right side)
41. Side sill reinforcement support extension (Left side)
42. Side sill front bulkhead
43. Side sill front bulkhead (Left side)
44. Side sill bulkhead C (Left side)
45. Side sill bulkhead D (Left side)
46. Side sill bulkhead E (Left side)
47. Side sill bulkhead G (Right side)
48. Side sill bulkhead F (Right side)
49. Front pillar reinforcement lower bulkhead
50. Front door hinge reinforcement lower
51. Front pillar reinforcement lower extension
52. Front door check reinforcement
53. Front pillar reinforcement lower
54. Front door hinge reinforcement upper
55. Front pillar reinforcement upper bulkhead
56. Centre inner plate
57. Centre pillar inner
58. Front door check reinforcement
59. Centre pillar inner lower
60. Centre pillar seat belt reinforcement
61. Rear door hinge reinforcement upper
62. Centre pillar reinforcement
63. Rear door hinge reinforcement lower
64. Side sill end plate
65. Rear wheel house reinforcement
66. Spring house panel
67. Rear wheel house inner panel
68. Rear wheel house inner extension
69. Spring house reinforcement
70. Spring house bracket plate
71. Spring house bracket

SIDE STRUCTURE REINFORCEMENT

1. A reinforcement was added in the front pillar. This suppresses the level of deformation of the door opening and recession of the deck crossmember upon front impact and offset impact. The design is also expected to improve passenger rescuability and to minimize the level of injuries.
2. An uneven thickness steel sheet* in which the sheet thickness is thinner on the side sill side was employed for the centre pillar reinforcement to ensure safety upon side impact and lightweightness.
3. The side sill outer reinforcement section was designed with large form, to suppress cabin deformation and improve safety upon impact.

NOTE: *: A steel sheet of varying thickness that is welded into one steel sheet.

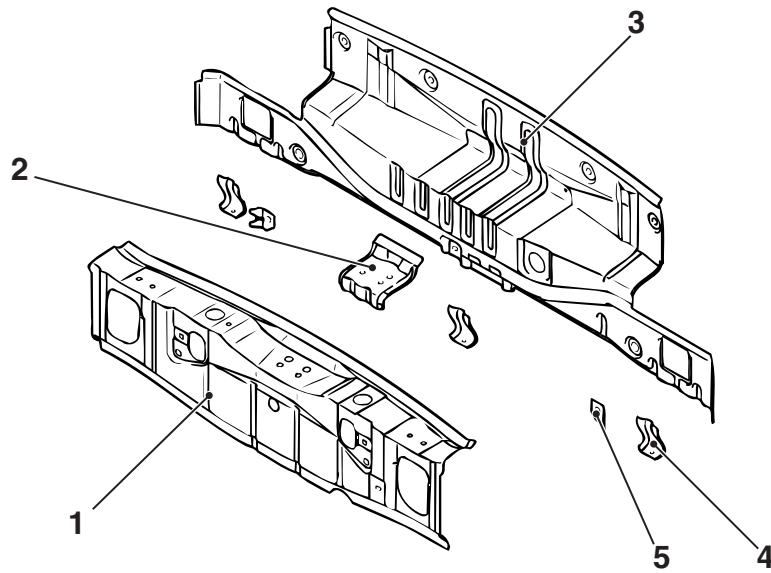


AB300039AB

REAR BODY

M4010012000151

REAR END CROSSMEMBER



- 1. Rear end crossmember inner
- 2. Tailgate striker reinforcement
- 3. Rear end crossmember outer

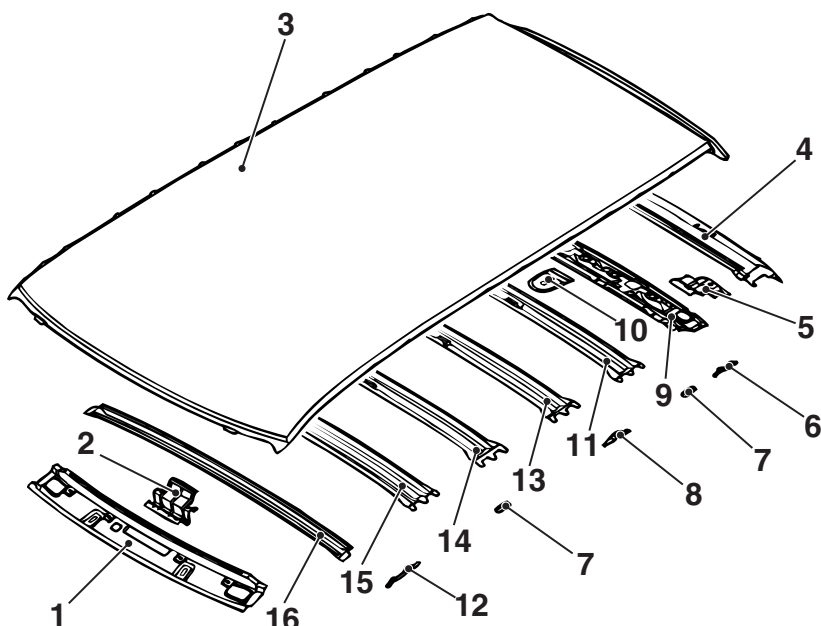
- 4. Rear bumper bracket
- 5. Rear end outer plate

AB202349AH

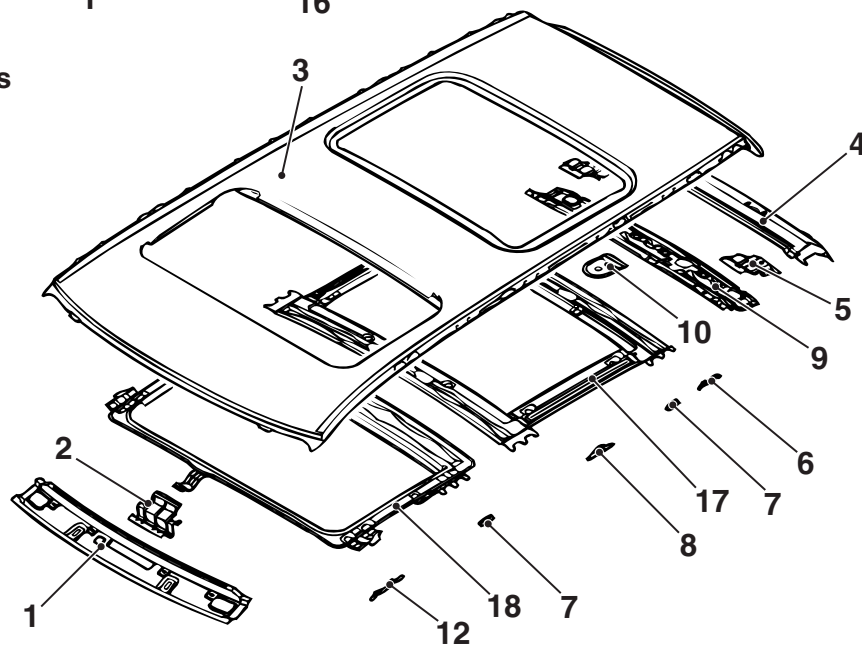
ROOF

M4010013000165

Standard roof



Sunroof and roof window glass



AB300145AB

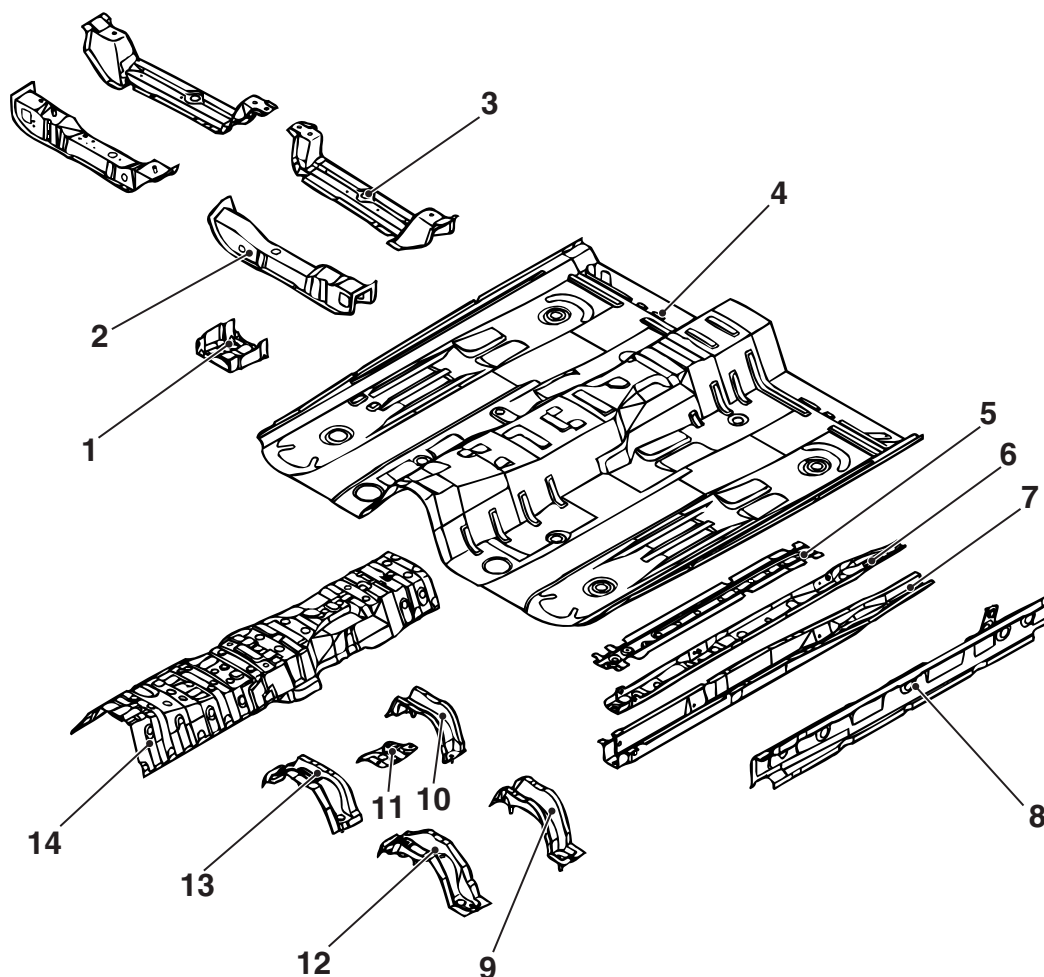
- | | |
|---|---|
| 1. Roof rail front | 10. Roof antenna reinforcement |
| 2. Map lamp bracket | 11. Roof bow C |
| 3. Roof panel | 12. Roof rack bracket front (Vehicles with roof rail) |
| 4. Roof rail rear outer | 13. Roof bow B |
| 5. Tailgate hinge reinforcement | 14. Roof bow A |
| 6. Roof rack bracket (Vehicles with roof rail) | 15. Roof bow centre |
| 7. Roof carrier bracket (Vehicles without roof rail) | 16. Roof bow front |
| 8. Roof rack bracket centre (Vehicles with roof rail) | 17. Roof reinforcement rear |
| 9. Roof rail rear inner | 18. Roof reinforcement front |

UNDER BODY

M4010014000179

FRONT FLOOR

The front floor sidemember and front floor cross-member rear section was designed with large form, to suppress cabin deformation and improve safety upon impact.

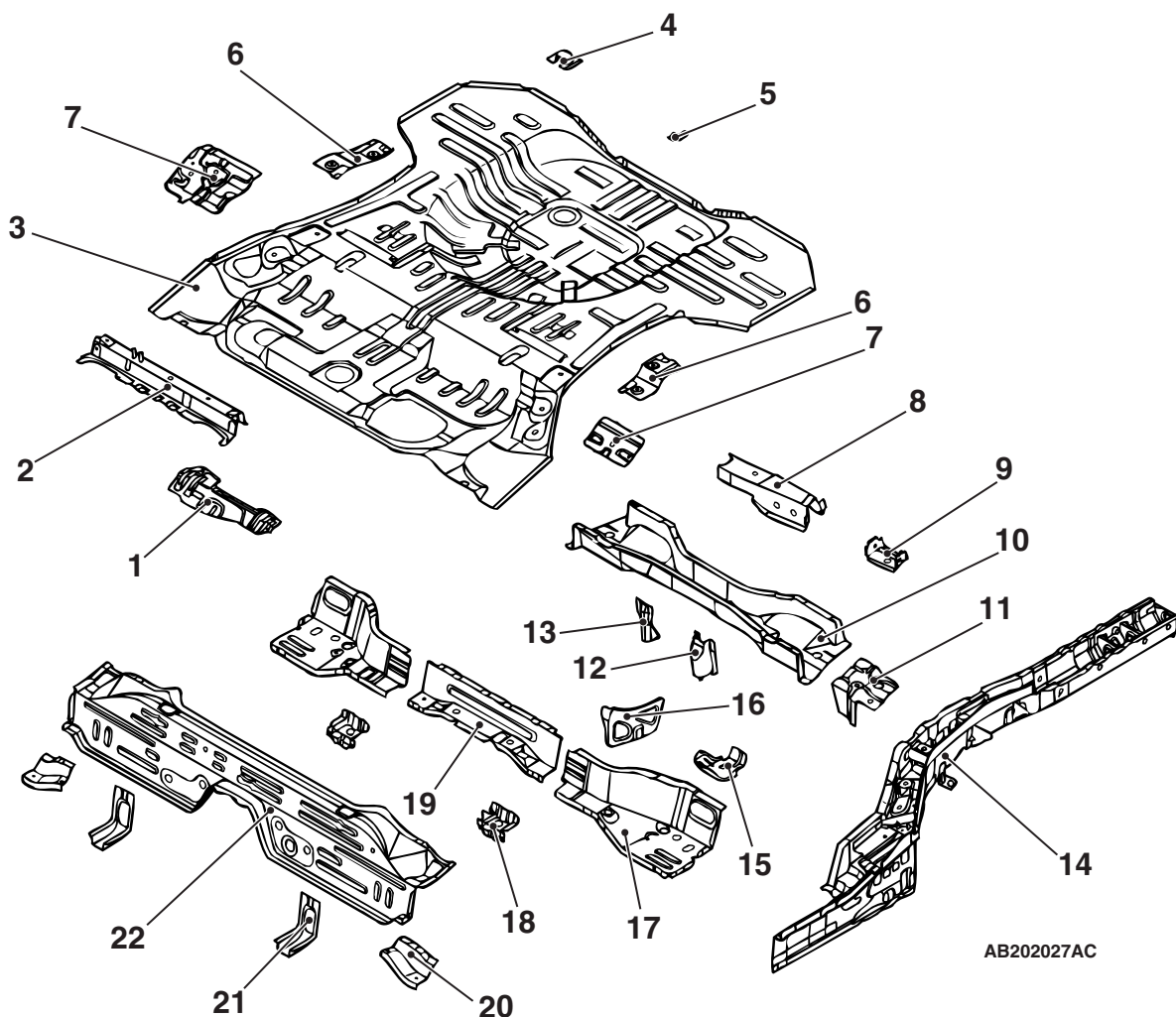


AB202390AB

- | | |
|---|---------------------------------------|
| 1. Instrument panel bracket reinforcement | 10. Backbone crossmember rear (2WD) |
| 2. Front floor crossmember front | 11. Parking brake lever reinforcement |
| 3. Front floor crossmember rear | 12. Backbone crossmember front (4WD) |
| 4. Front floor pan | 13. Backbone crossmember front (2WD) |
| 5. Front floor sidemember reinforcement front | 14. Backbone reinforcement |
| 6. Front floor sidemember reinforcement rear | |
| 7. Front floor sidemember | |
| 8. Front floor side sill inner | |
| 9. Backbone crossmember rear (4WD) | |

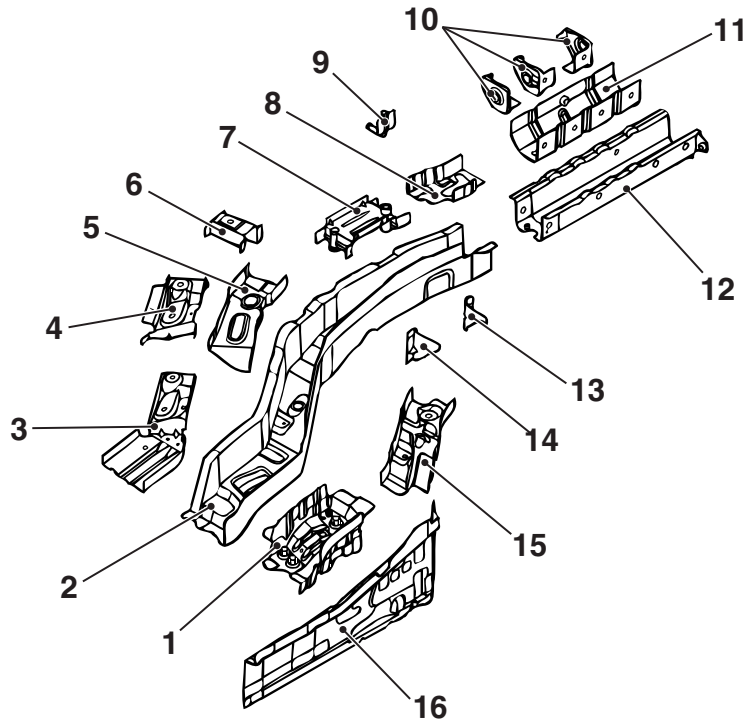
REAR FLOOR

The trailer towing capacity has been increased as the rear floor sidemember extension and towing hook reinforcement have been thickened to improve rigidity.

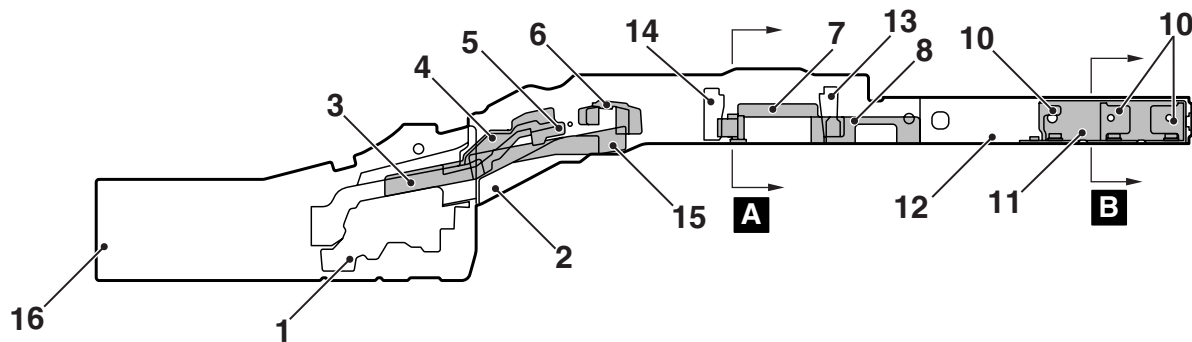


- | | |
|--|---|
| 1. Child anchor bracket | 14. Rear floor sidemember |
| 2. Rear floor crossmember upper | 15. Tie down reinforcement |
| 3. Rear floor pan | 16. Rear seat crossmember side bracket |
| 4. Spare tyre bracket | 17. Rear seat crossmember side |
| 5. Heat protector bracket | 18. Fuel tank front bracket |
| 6. Rear floor brace plate | 19. Rear seat crossmember centre |
| 7. Seat belt rear floor reinforcement | 20. Rear floor crossmember reinforcement side |
| 8. Upper arm crossmember reinforcement | 21. Front floor sidemember extension |
| 9. Rear suspension crossmember centre support | 22. Rear floor extension |
| 10. Upper arm crossmember | |
| 11. Rear suspension crossmember centre bracket | |
| 12. Fuel tank rear bracket | |
| 13. Fuel tank rear bracket centre | |

REAR FLOOR SIDEMEMBER REINFORCEMENT



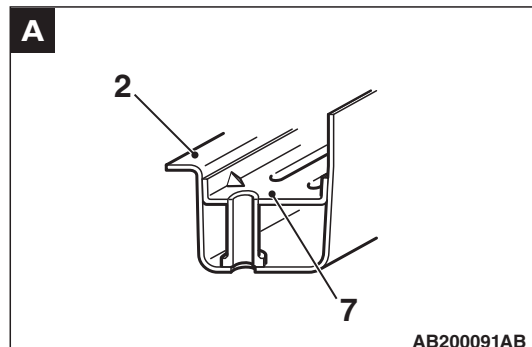
AB201994AC



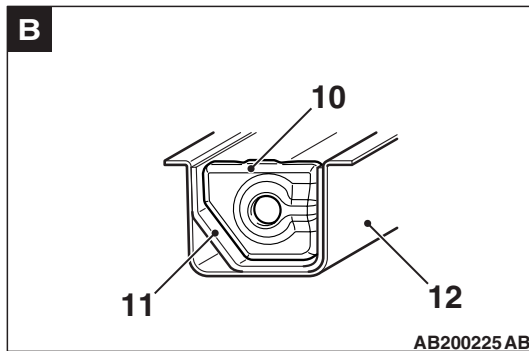
AB200021AC

1. Trailing arm bracket
2. Rear floor sidemember
3. Rear seat back reinforcement side front
4. Rear seat back bracket side front
5. Rear floor sidemember reinforcement
6. Rear seat back side
7. Rear suspension bracket
8. Rear floor sidemember reinforcement rear (Left side)
9. Muffler hanger rear (Right side)
10. Towing hook reinforcement bulkhead
11. Towing hook reinforcement
12. Rear floor sidemember extension
13. Rear spring house bracket support rear
14. Rear spring house bracket support front

15. Rear suspension crossmember front bracket
16. Rear floor side sill inner

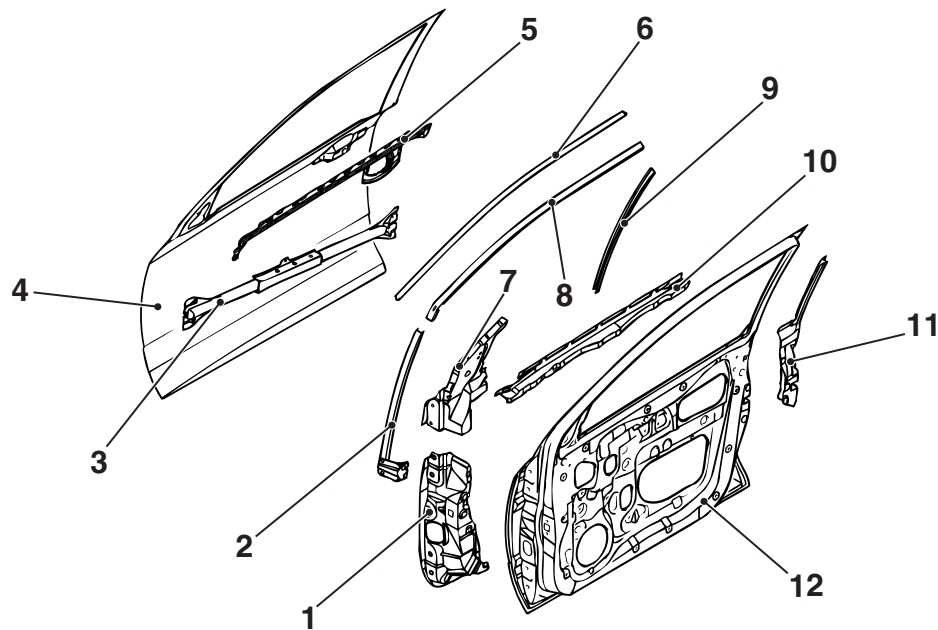
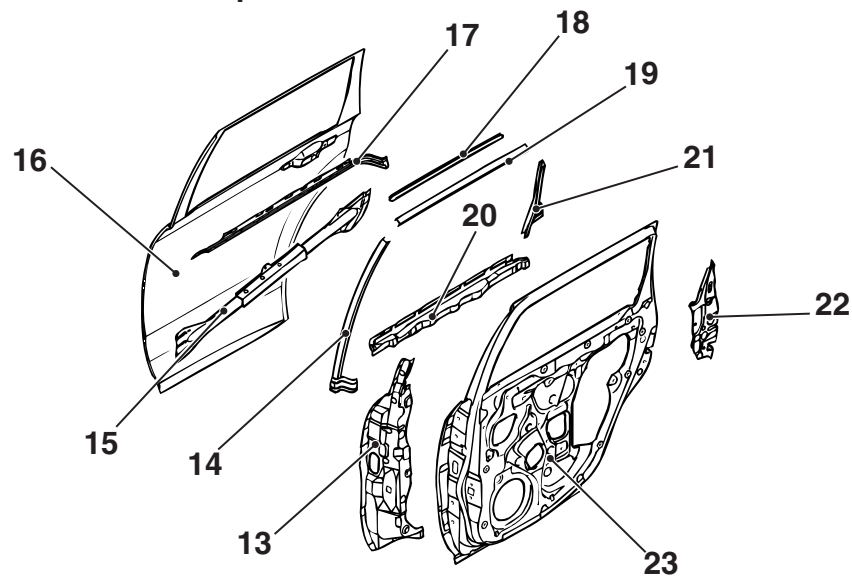


AB200091AB

B**DOOR**

M4010015000161

A one-piece top-bottom pressed door structure was employed for the door outer panel and door inner panel to improve door panel rigidity.

Front Door**Rear Door**

AB202356BT

- | | |
|--|--|
| 1. Front door hinge reinforcement | 7. Front door hinge reinforcement upper |
| 2. Front door sash front | 8. Front door sash upper |
| 3. Front door side door beam | 9. Front door sash rear |
| 4. Front door outer panel | 10. Front door belt line reinforcement inner |
| 5. Front door belt line reinforcement | 11. Front door latch reinforcement |
| 6. Front door weather strip hold upper | 12. Front door inner panel |

13. Rear door hinge reinforcement
14. Rear door sash front
15. Rear door side door beam
16. Rear door outer panel
17. Rear door belt line reinforcement
18. Rear door weather strip holder
19. Rear door sash upper
20. Rear door belt line reinforcement inner
21. Rear door sash rear
22. Rear door latch reinforcement
23. Rear door inner panel

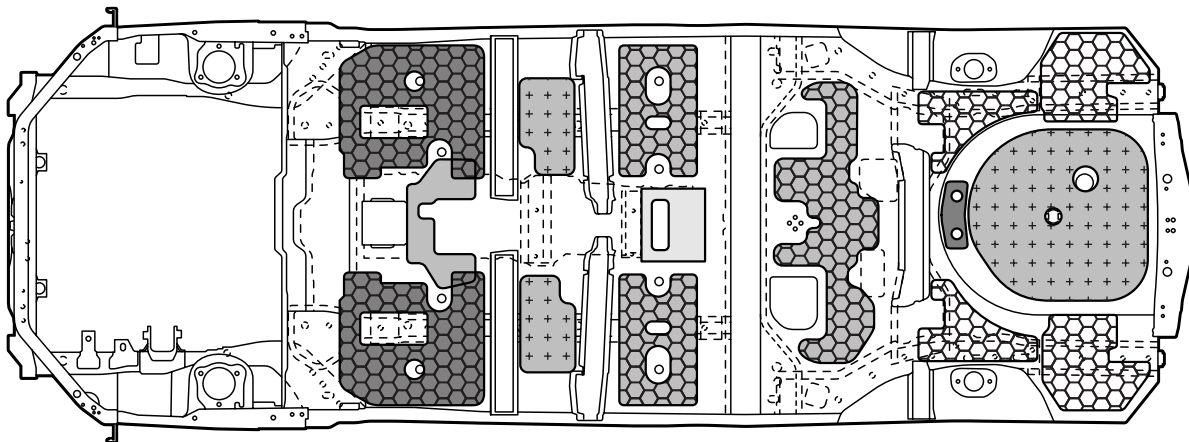
SILENCER APPLICATION LOCATIONS







A silencer (MD-12, RSS and melting sheet) has been adhered on the top part of the floor to improve anti-vibration performance and to shut-out exhaust gas heat.

NOTE:

- MD-12 is a high performance sheet composed of asphalt applied with mica and thermosetting resin for improving anti-vibration performance.
- RSS (Rubber Special Sheet) is a product name of Nihon Tokushu Toryo Co., Ltd. The product features the same performance as a steel sheet sandwich type and refers to a heat cured resin sheet that is moulded into a sheet with a uniform thickness (2.0mm). It contains degenerating resin and filler with asphalt and rubber as the main contents.

M4010005000193



-  : 1.6 mm thick melting sheet
-  : 3.0 mm thick melting sheet [Place two 1.6 mm melting sheet one on top of another.]
-  : 1.6 mm thick MD-12 [Place a 1.6 mm melting sheet.]
-  : 4.0 mm thick MD-12 [Place three 1.6 mm melting sheet one on top of another.]
-  : 6.0 mm thick MD-12 [Place three 1.6 mm melting sheet one on top of another.]
-  : 3.6 mm thick melting sheet and RSS [Place three 1.6 mm melting sheet one on top of another.]

AB301591AB

LOCATIONS USING URETHANE FOAM AND FOAM MATERIAL

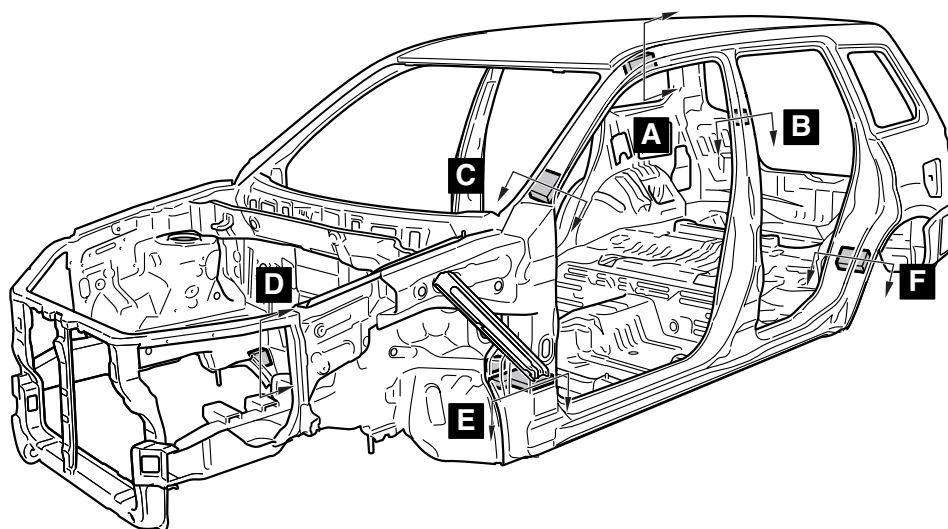
M4010007000144

- Introduction of noise was prevented by inserting urethane foam inside the centre pillar.
- Introduction of noise was prevented by adding foam noise absorbing materials inside each pillar, side roof rail and wheel house arch interior.
- High rigidity foam materials were added inside the front sidemember (right side) and rear floor sidemember to heighten panel rigidity.

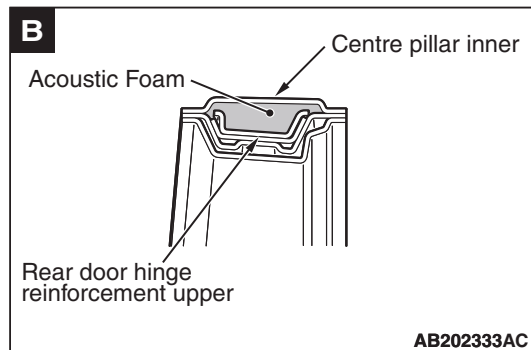
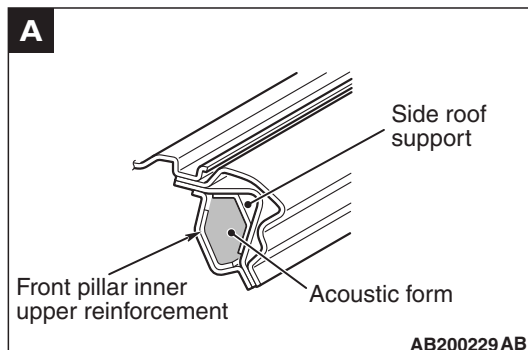
⚠ CAUTION

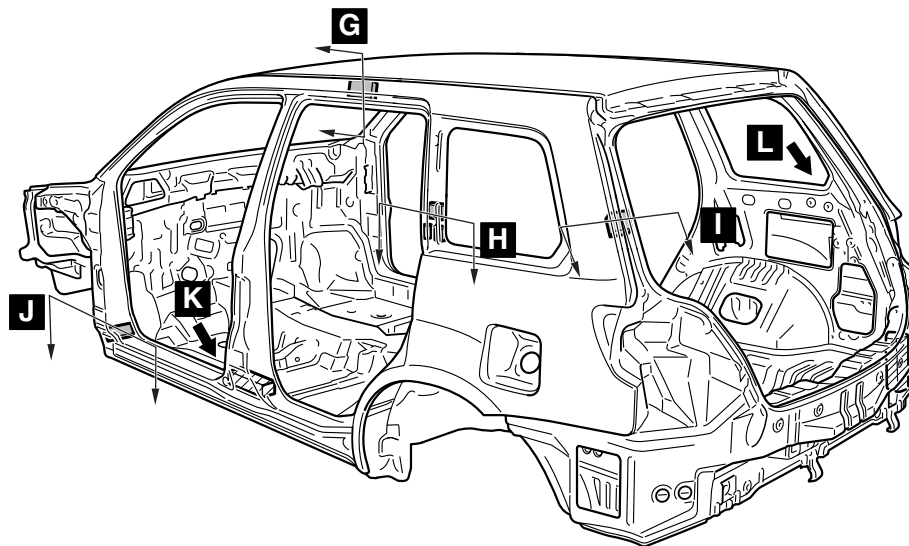
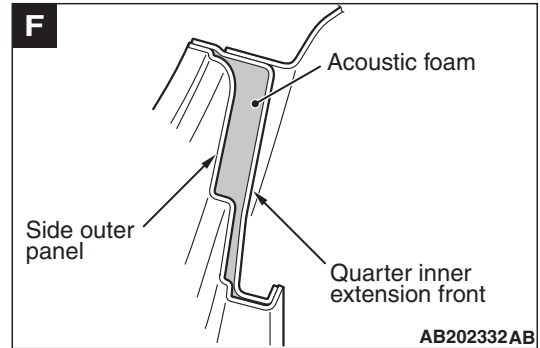
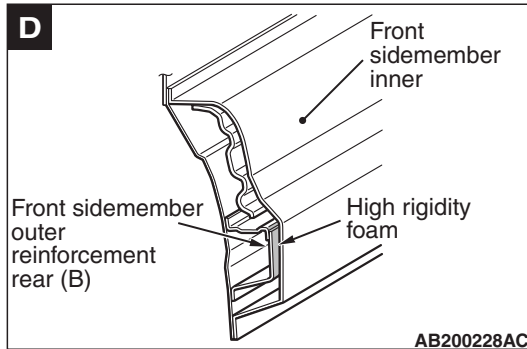
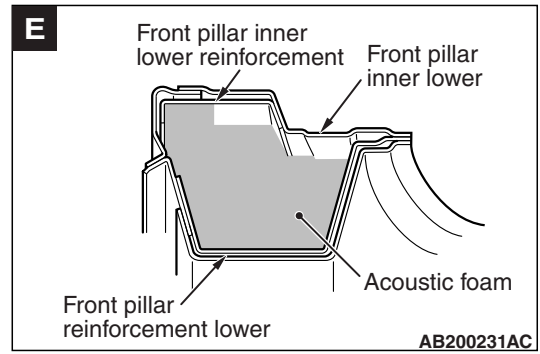
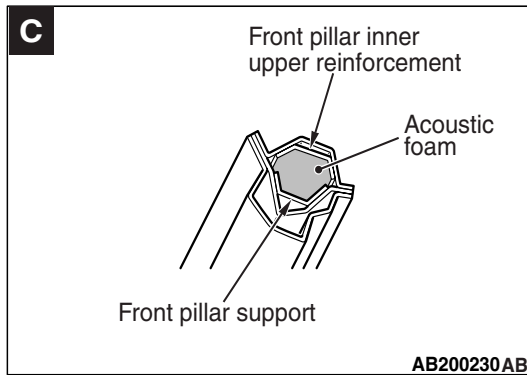
The foam materials may burn when heated. Always observe the following instructions.

- Never use a gas burner or burn the areas using foam materials.
- When cutting the parts using foam materials, ensure to use tools (air saw, etc.) that do not generate fire.
- If there is residual foam materials remaining on the cut section (body side) then weld after removing the foam materials from periphery of the welding area.

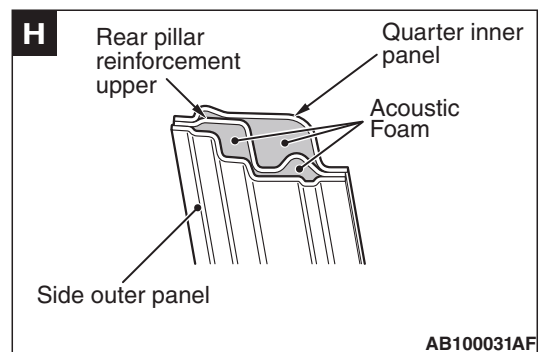
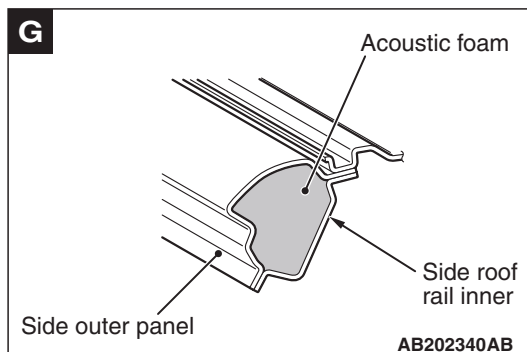


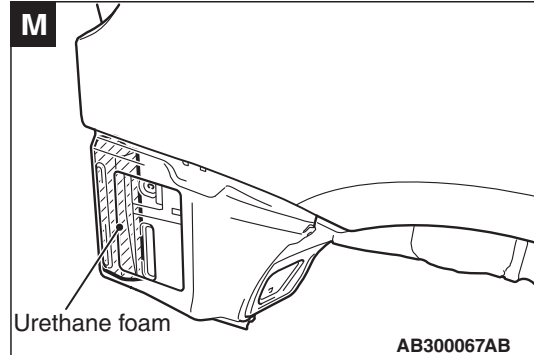
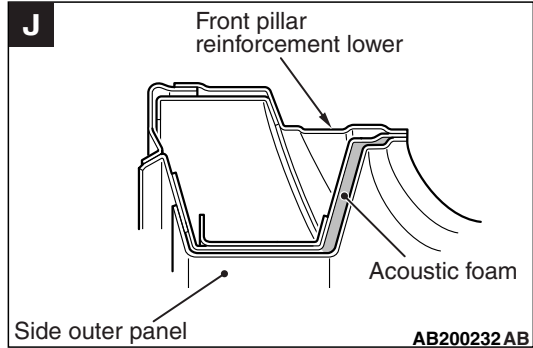
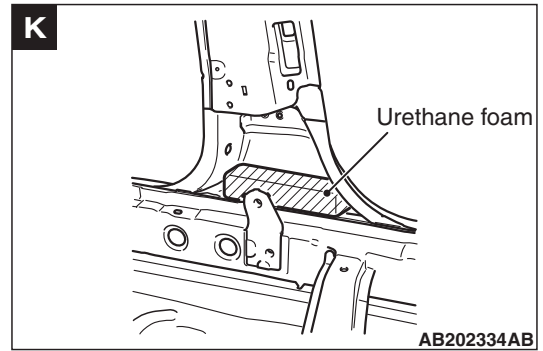
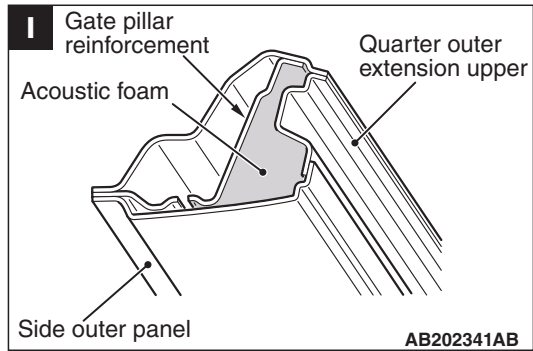
AB200011AC





AB300068AC



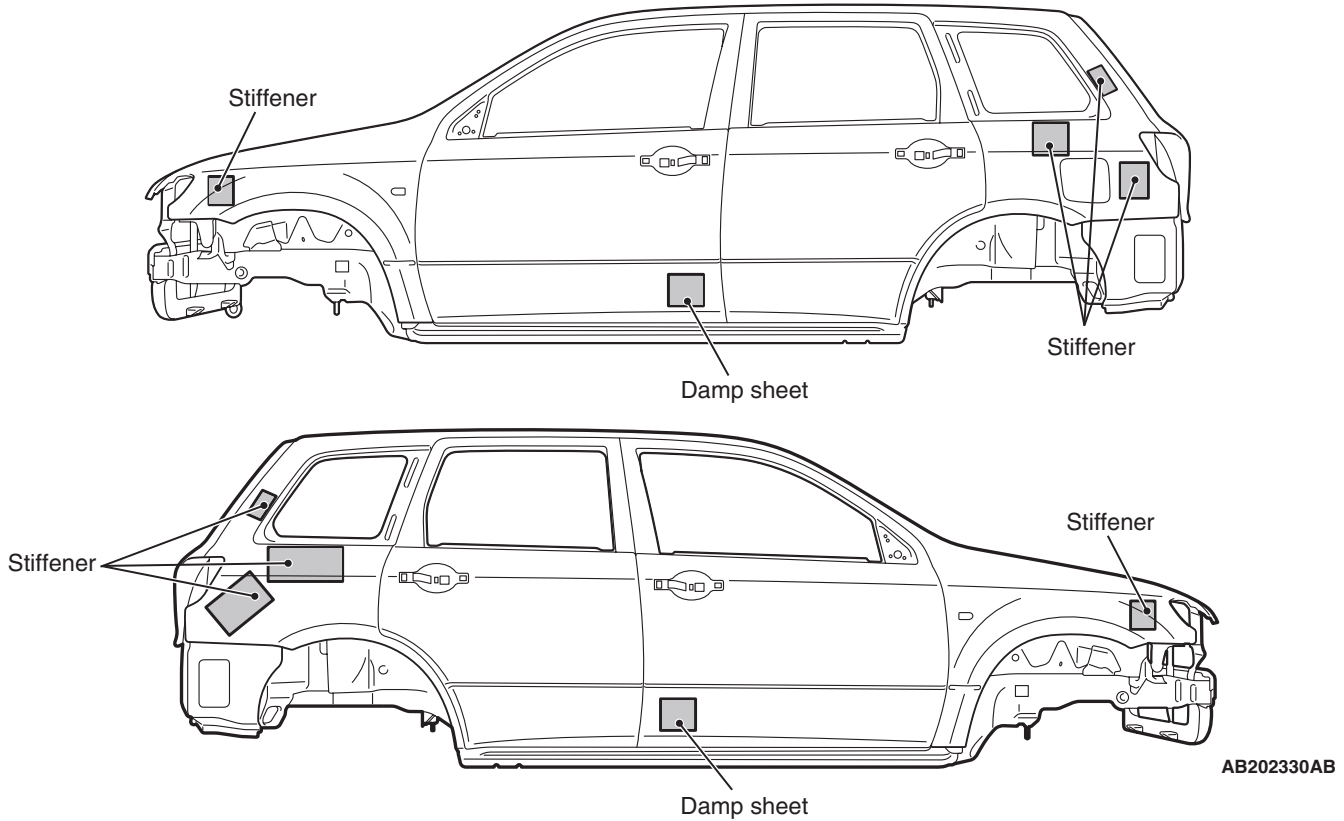


STIFFENER AND DAMP SHEET APPLICATION LOCATIONS

M4010008000169

Sound insulation was improved with anti-vibration effects and heightening surface rigidity with a stiffener on the inner side of the side outer panel, and front fender, as well as a damping sheet adhered to the inner side of the front door.

NOTE: The main contents of a stiffener are epoxy resin. It comes in a sheet form and contains a mixture of glass fibre and filler, and cures (stiffens) when heated. It is used to improve the rigidity of the outer plate.



NOTES