

GROUP 52A

INTERIOR

CONTENTS

SPECIAL TOOL	52A-2	REMOVAL AND INSTALLATION	52A-25
INSTRUMENT PANEL ASSEMBLY*	52A-2	HEADLINING	52A-27
REMOVAL AND INSTALLATION <L.H. DRIVE VEHICLES>	52A-2	REMOVAL AND INSTALLATION	52A-27
DISASSEMBLY AND REASSEMBLY	52A-7	INSIDE REAR VIEW MIRROR	52A-28
REMOVAL AND INSTALLATION <R.H. DRIVE VEHICLES>	52A-8	FRONT SEAT ASSEMBLY*	52A-29
DISASSEMBLY AND REASSEMBLY	52A-13	REMOVAL AND INSTALLATION	52A-29
FLOOR CONSOLE ASSEMBLY	52A-14	INSPECTION	52A-31
REMOVAL AND INSTALLATION	52A-14	DISASSEMBLY AND REASSEMBLY	52A-33
DISASSEMBLY AND REASSEMBLY	52A-16	REAR SEAT ASSEMBLY	52A-36
TRIMS	52A-18	REMOVAL AND INSTALLATION	52A-36
REMOVAL AND INSTALLATION	52A-18	DISASSEMBLY AND REASSEMBLY	52A-37
DOOR TRIM	52A-21	FRONT SEAT BELT*	52A-39
REMOVAL AND INSTALLATION	52A-21	REMOVAL AND INSTALLATION	52A-39
DISASSEMBLY AND REASSEMBLY	52A-24	REAR SEAT BELT	52A-40
TAILGATE TRIM	52A-25	REMOVAL AND INSTALLATION	52A-40

WARNINGS REGARDING SERVICING OF SUPPLEMENTAL RESTRAINT SYSTEM (SRS) EQUIPPED VEHICLES

WARNING

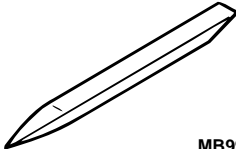
- *Improper service or maintenance of any component of the SRS, or any SRS-related component, can lead to personal injury or death to service personnel (from inadvertent firing of the air bag) or to the driver and passenger (from rendering the SRS inoperative).*
- *Service or maintenance of any SRS component or SRS-related component must be performed only at an authorized MITSUBISHI dealer.*
- *MITSUBISHI dealer personnel must thoroughly review this manual, and especially its GROUP 52B - Supplemental Restraint System (SRS) before beginning any service or maintenance of any component of the SRS or any SRS-related component.*

NOTE

The SRS includes the following components: SRS air bag control unit, SRS warning light, front impact sensors, air bag module, clock spring, and interconnecting wiring. Other SRS-related components (that may have to be removed/installed in connection with SRS service or maintenance) are indicated in the table of contents by an asterisk (*).

SPECIAL TOOL

M1521000600264

Tool	Tool number	Name	Use
 MB990784	MB990784	Ornament remover	Removal of switch, trim, etc.

INSTRUMENT PANEL ASSEMBLY

REMOVAL AND INSTALLATION

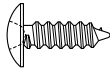
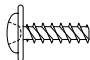
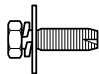
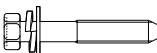
<L.H. DRIVE VEHICLES>

M1521001700491

⚠ WARNING

For removal and installation of the passenger's side air bag module, always observe the service procedures described in GROUP 52B, Air Bag Module and Clock Spring [P.52B-179](#).

The following bolts and screws are used for installing the instrument panel. Bolts and screws are indicated as marks shown in the illustration in the sections of "Removal and Installation" and "Disassembly and Assembly."

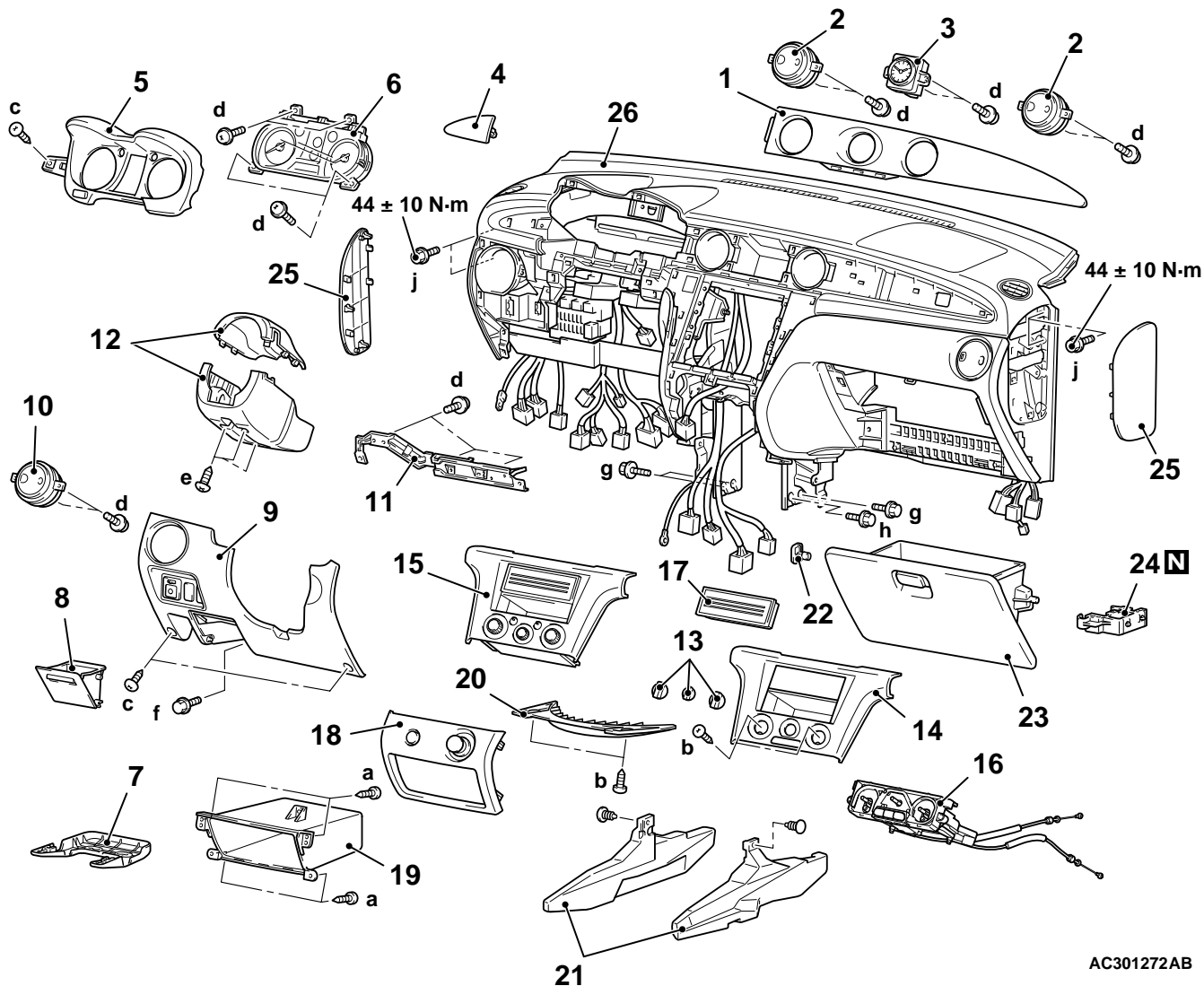
Name	Symbol	Size (D × L) mm	Colour	Shape
Tapping screw	a	5 × 12	-	 AC104450
	b	5 × 16	-	
	c	5 × 16	Black	
	d	5 × 12	-	 AC104436
	e	5 × 20	-	
Washer assembly bolt	f	6 × 16	-	 AC104417
	g	6 × 16	-	
	h	6 × 16 (Earth)	-	
	i	8 × 20	-	
	j	10 × 60	-	 AC200304

⚠ CAUTION

- Refer to GROUP 52B-SRS Service Precautions [P.52B-4](#) and Air bag Module and Clock Spring [P.52B-179](#) before removing the passenger side air bag module.
- Do not subject the SRS-ECU to any shocks when removing or installing the instrument panel.

Pre-removal and Post-installation Operation

- Removal and Installation of Front Floor Console (Refer to [P.52A-14](#)).
- Removal and Installation of Steering Wheel (Refer to GROUP 37A, Steering Wheel [P.37A-16](#)) and Air Bag Module Assembly (Refer to GROUP 52B, Air Bag Module and Clock Spring [P.37A-16](#)).



AC301272AB

<<A>>

Removal steps

1. Instrument panel clock garnish
2. Instrument panel air outlet (centre)
3. Clock
4. Instrument panel driver's side garnish
5. Meter bezel
6. Combination meter
7. Junction block cover
- Hood lock release handle (Refer to GROUP 42, Hood [P.42-4](#)).

<<A>>

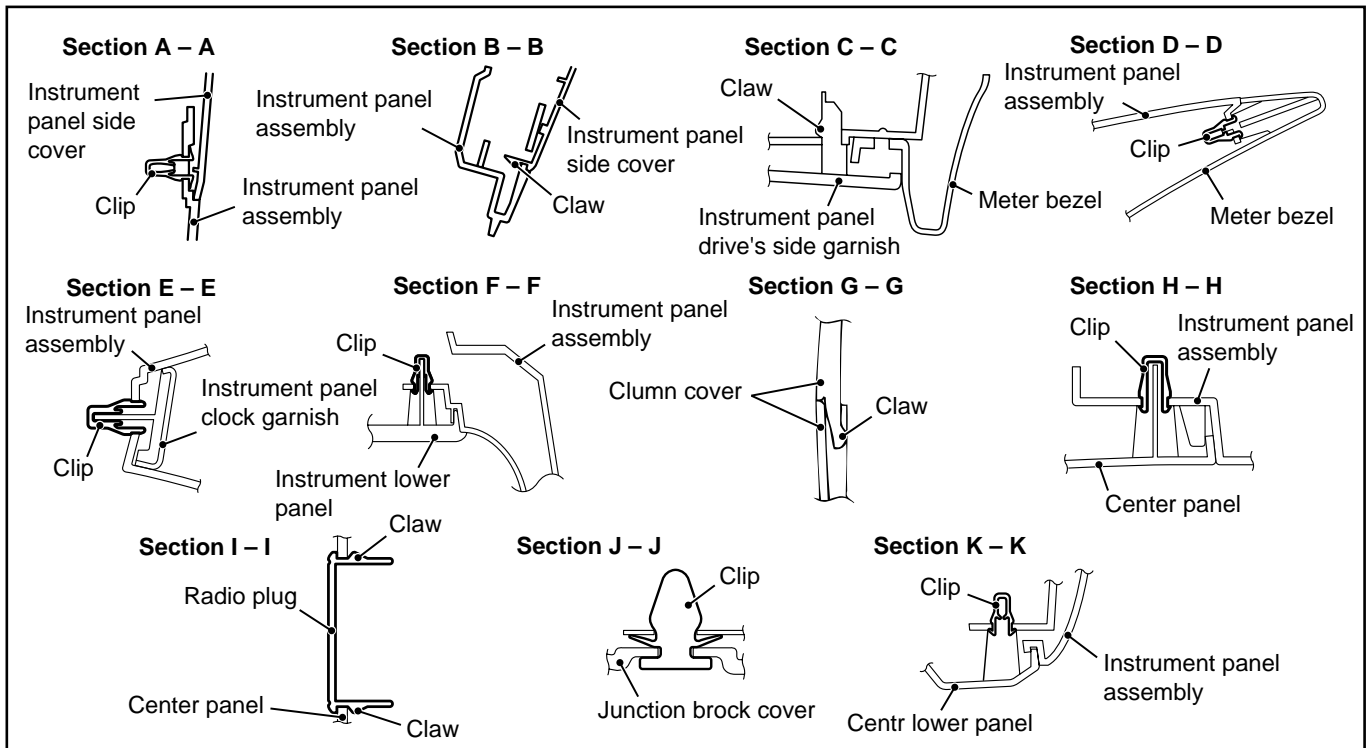
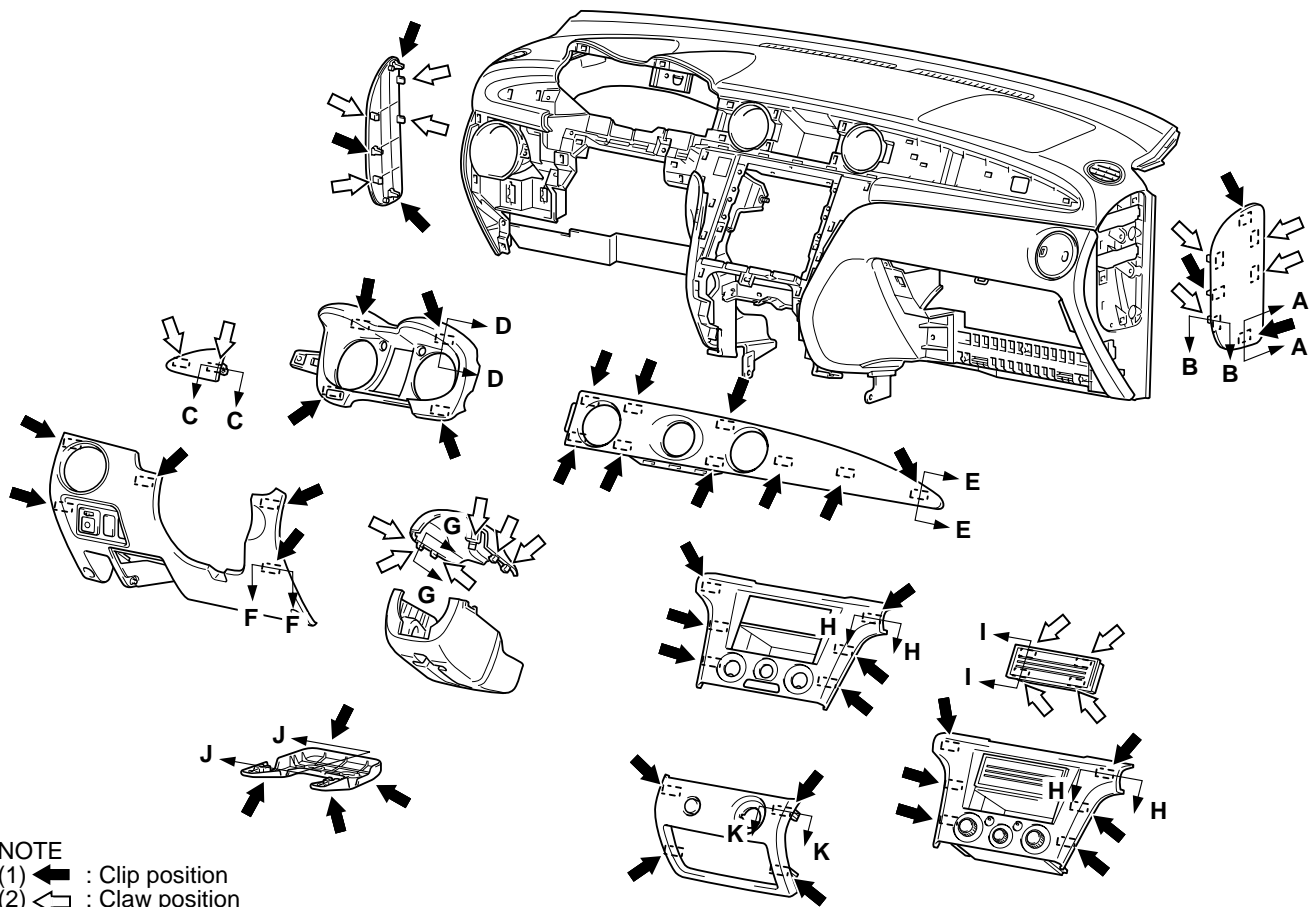
Removal steps (Continued)

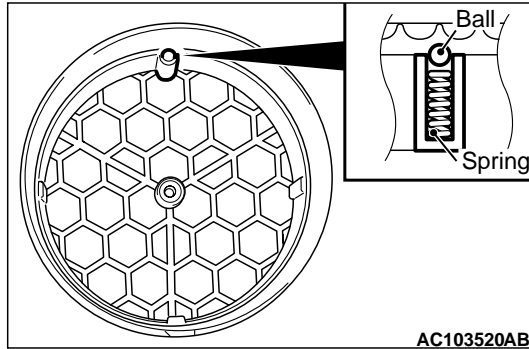
8. Instrument panel parcel box
- Floor harness (R.H.) and junction block connection
9. Instrument lower panel
10. Instrument panel air outlet (L.H.)
11. Instrument lower panel bracket
12. Column cover

Removal steps (Continued)

- Air mix door cable, blow vent changeover damper cable connection (Refer to GROUP 55A, Heater Control Assembly and A/C Switch [P.55A-60](#)).
- >>A<<
13. Knob
 14. Centre panel
 15. Centre panel assembly
 16. Manual air conditioner control panel
 17. Radio plug
 18. Centre lower panel
 19. Centre lower box
 20. Centre lower cover
 - Front scuff plate, cowl side trim (Refer to [P.52A-18](#)).
 21. Back bone spacer
 22. Glove box stopper
 23. Glove box
 24. Connector block
 25. Instrument panel side cover
 - Roof harness connection
 - Instrument panel harness earth connection
 - Instrument panel and body harness connection
 - Steering shaft harness connector and clamp
 - Stop lamp switch harness connector
 - SRS-ECU harness connector
 - Shift lock cable clamp
 - Steering shaft installation bolt (Refer to GROUP 37A, Steering Shaft [P.37A-18](#)).
 26. Instrument panel assembly

CLIP AND CLAW POSITIONS



REMOVAL SERVICE POINT**<<A>> INSTRUMENT PANEL AIR OUTLET
REMOVAL**

The instrument panel air outlet may remain on the instrument panel side when disassembling the lower panel of the instrument panel and the instrument panel garnish. Carefully disassemble the parts remaining on the instrument panel side to prevent the ball and spring from falling. Assemble the ball and spring according to the figure to the left if they fall off.

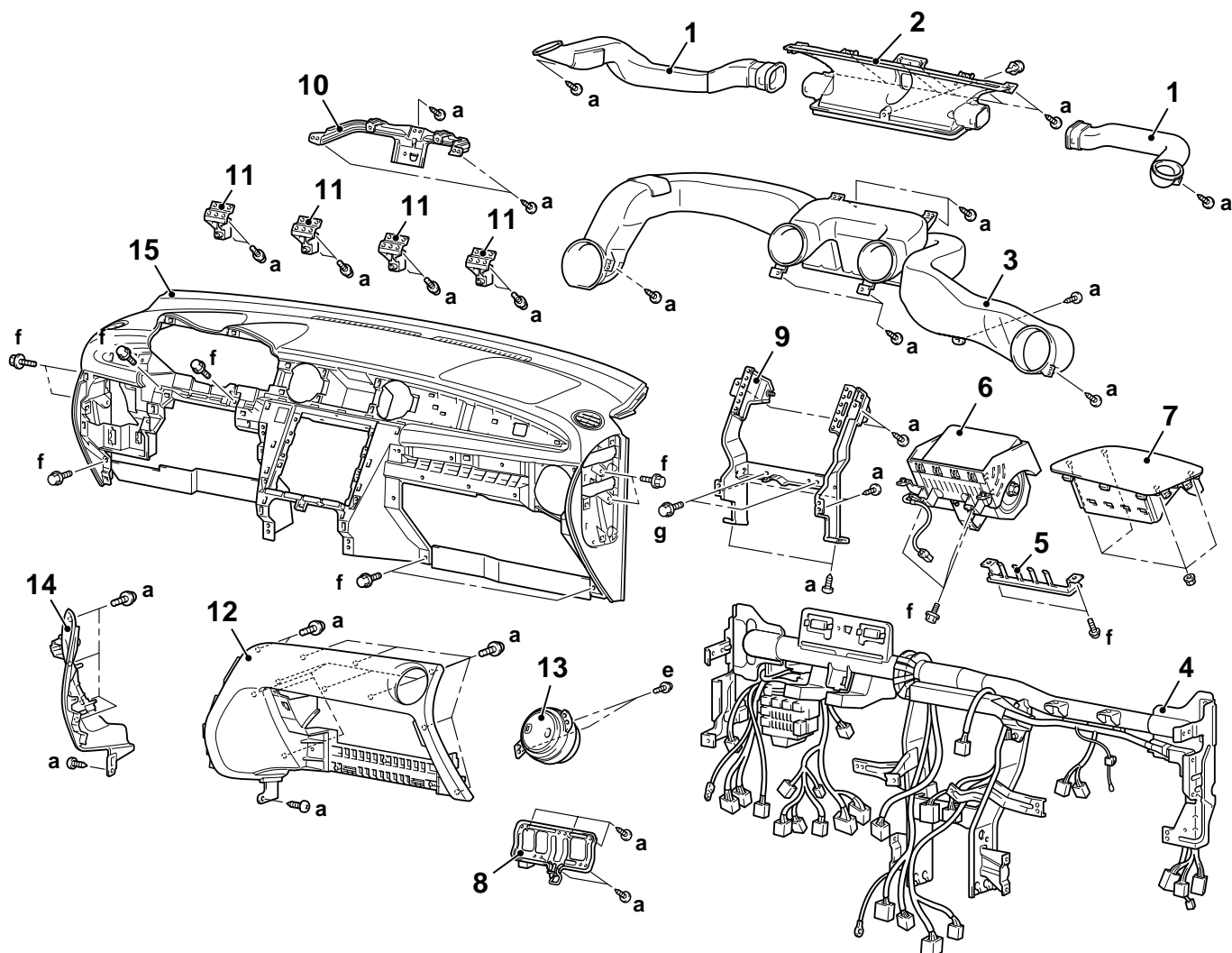
INSTALLATION SERVICE**>>A<< CENTRE PANEL ASSEMBLY
INSTALLATION**

Air mix door cable and blow vent changeover damper cable connection (Refer to GROUP 55A, Heater Control Assembly and A/C Switch [P.55A-60](#)).

DISASSEMBLY AND REASSEMBLY

M1521001900398

<L.H. DRIVE VEHICLES>



AC212544AB

Disassembly steps

1. Side defroster duct
2. Defroster nozzle assembly
3. Distribution duct
4. Front deck crossmember
5. Passenger's side air bag module bracket
6. Passenger's side air bag module
7. Passenger's side air bag module cover
8. Glove box striker

Disassembly steps (Continued)

9. Instrument panel reinforcement
10. Meter bracket
11. Instrument panel holder
12. Instrument panel under cover passenger's side
13. Side air outlet assembly (R.H.)
14. Centre cover driver's side
- Instrument panel harness connector clamp
15. Instrument panel




REMOVAL AND INSTALLATION
<R.H. DRIVE VEHICLES>

M1521001700509

⚠ WARNING

For removal and installation of the passenger's side air bag module, always observe the service procedures described in GROUP 52B, Air Bag Module and Clock Spring P.52B-179.

The following bolts and screws are used for installing the instrument panel. Bolts and screws are indicated as marks shown in the illustration in the sections of "Removal and Installation" and "Disassembly and Assembly."

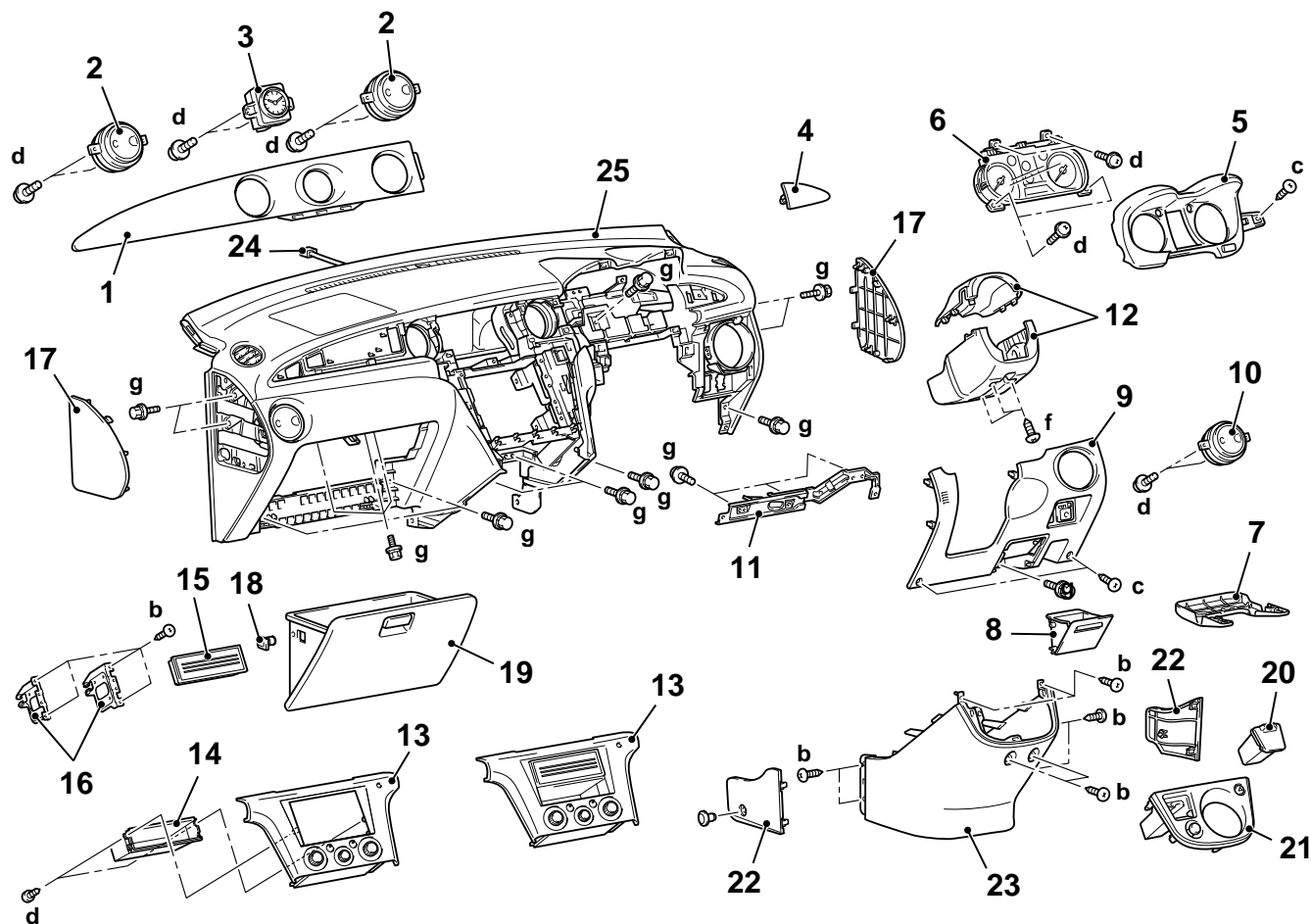
Name	Symbol	Size (D × L) mm	Colour	Shape
Tapping screw	a	5 × 12	—	 ACX01282
	b	5 × 16	—	
	c	5 × 16	Black	
	d	5 × 12	—	 ACX01283
	e	5 × 16	Black	
	f	5 × 20	—	
Washer assembly bolt	g	6 × 16	—	 ACX02229

CAUTION

- Refer to GROUP 52B, SRS Service Precautions [P.52B-4](#) and Air bag Module and Clock Spring [P.52B-179](#) before removing the passenger side air bag module.
- Do not subject the SRS-ECU to any shocks when removing or installing the instrument panel.

Pre-removal and Post-installation Operation

- Removal and Installation of Front Floor Console (Refer to [P.52A-14](#)).
- Removal and Installation of Steering Wheel (Refer to GROUP37, Steering Wheel [P.37A-16](#), [P.37A-16](#)) and Air Bag Module Assembly (Refer to GROUP 52B, Air Bag Module and Clock Spring [P.52B-179](#)).



AC309252 AB

Removal steps

<<A>>

1. Instrument panel garnish
2. Instrument panel air outlet (centre)
3. Clock
4. Instrument panel driver's side garnish
5. Meter bezel
6. Combination meter
7. Junction block cover
- Hood lock release handle (Refer to GROUP 42, Hood [P.42-4](#)).
8. Instrument panel parcel box

<<A>>

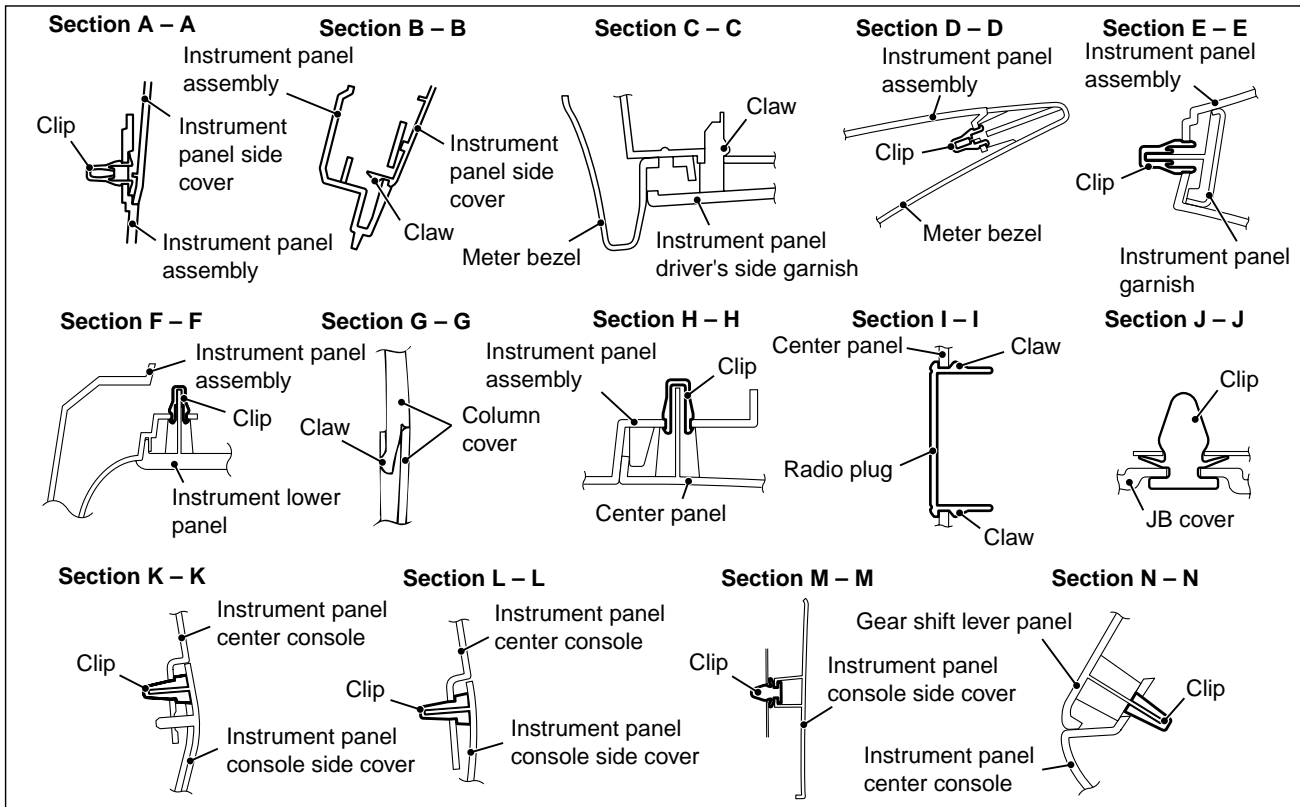
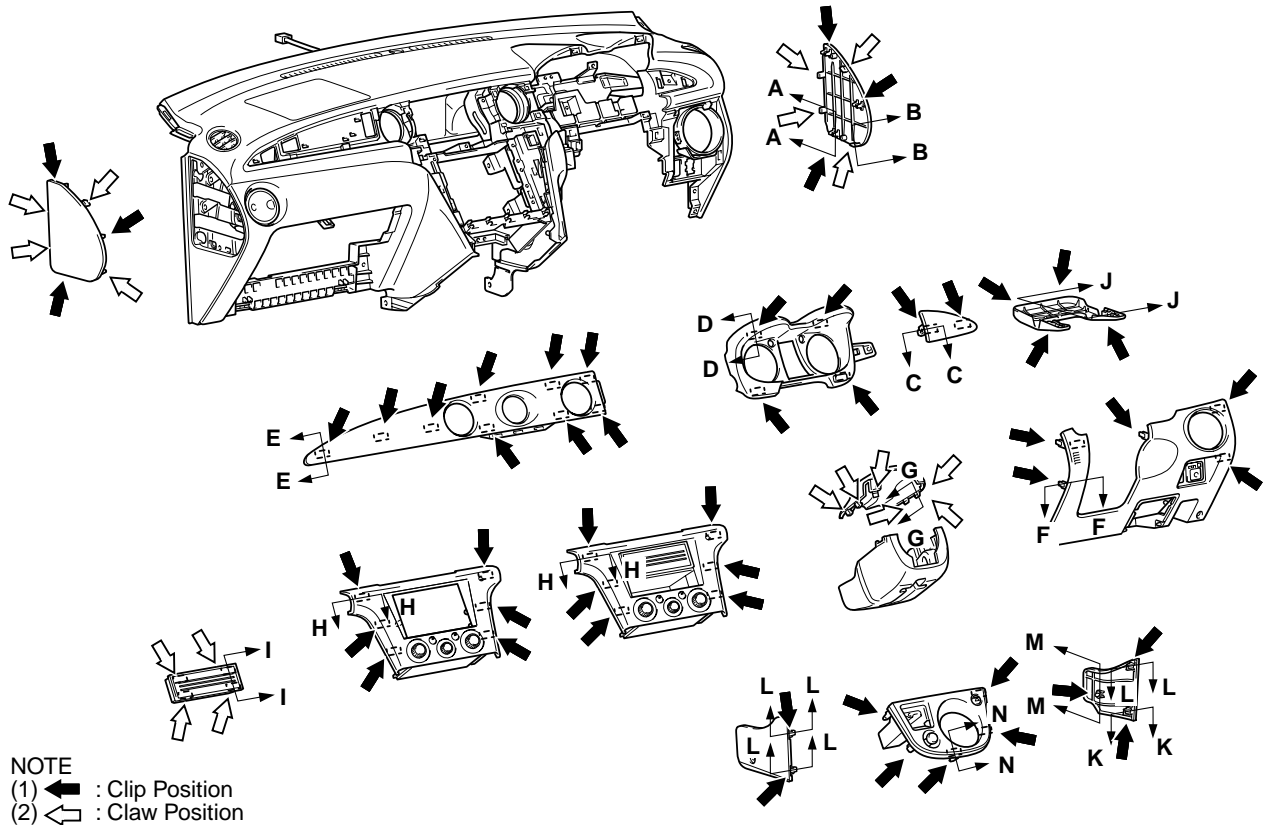
Removal steps (Continued)

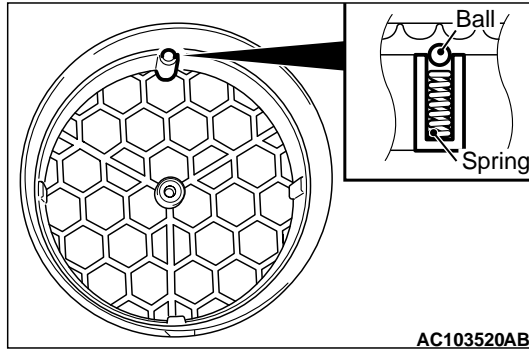
- Floor harness (R.H.) and junction block connection
- 9. Instrument lower panel
- 10. Instrument panel air outlet (R.H.)
- 11. Instrument panel lower panel bracket
- 12. Column cover
- 13. Centre panel assembly

Removal steps (Continued)

- Automatic air conditioner control panel (A/C-ECU) (Refer to GROUP 55B, Automatic Air Conditioner Panel Assembly (A/C-ECU) [P.55B-99](#)).
- 14. Box <Option>
- 15. Radio plug <Option>
- 16. Radio bracket
- 17. Instrument panel side cover
- 18. Glove box stopper
- 19. Glove box
- Air bag connector (passenger's side)
- 20. Accessory box
- 21. Gear shift lever panel
- 22. Instrument panel console side cover
- 23. Instrument panel centre console
 - Interior temperature sensor (Refer to GROUP 55B, Sensors [P.55B-103](#)).
- 24. Photo sensor connector
 - Remote controlled mirror switch harness connector clamp
 - Fog lamp switch harness connector clamp
 - Combination meter harness connector clamp
 - Steering shaft harness connector and clamp
 - Steering shaft installation bolt (Refer to GROUP 37A, Steering Shaft [P.37A-18](#)).
- 25. Instrument panel assembly

CLIP AND CLAW POSITIONS



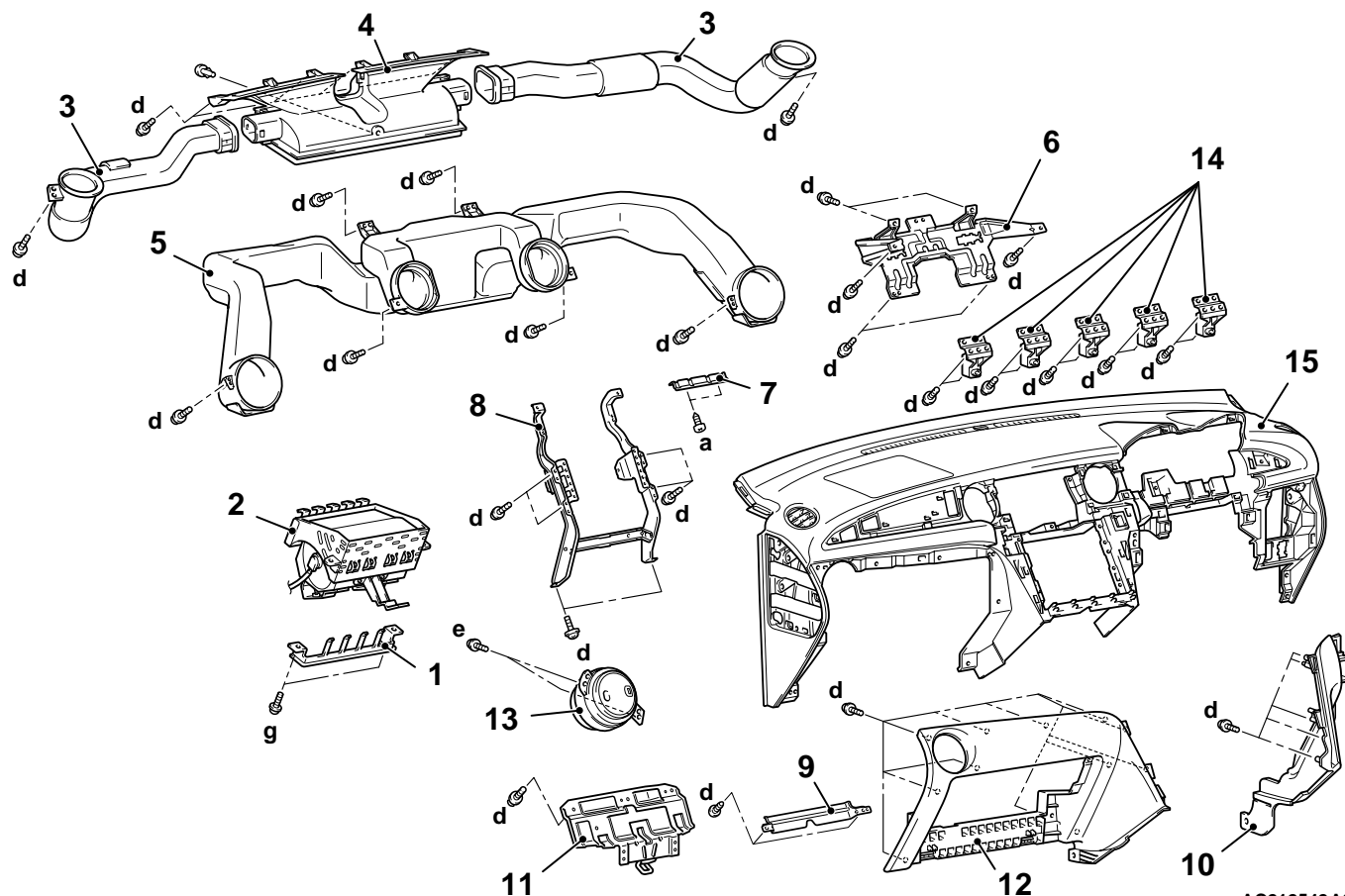
REMOVAL SERVECE POINT**<<A>> INSTRUMENT PANEL AIR OUTLET
REMOVAL**

The instrument panel air outlet may remain on the instrument panel side when disassembling the lower panel of the instrument panel and the instrument panel garnish. Carefully disassemble the parts remaining on the instrument panel side to prevent the ball and spring from falling. Assemble the ball and spring according to the figure to the left if the fall off.

DISASSEMBLY AND REASSEMBLY

M1521001900387

<R.H. DRIVE VEHICLES>



AC212542AC

Disassembly steps

1. Passenger's side air bag module bracket
2. Passenger's side air bag module
3. Side defroster duct
4. Defroster nozzle assembly
5. Distribution duct
6. Meter bracket
7. Instrument panel garnish bracket
8. Instrument panel reinforcement
9. Centre panel bracket

Disassembly steps (Continued)

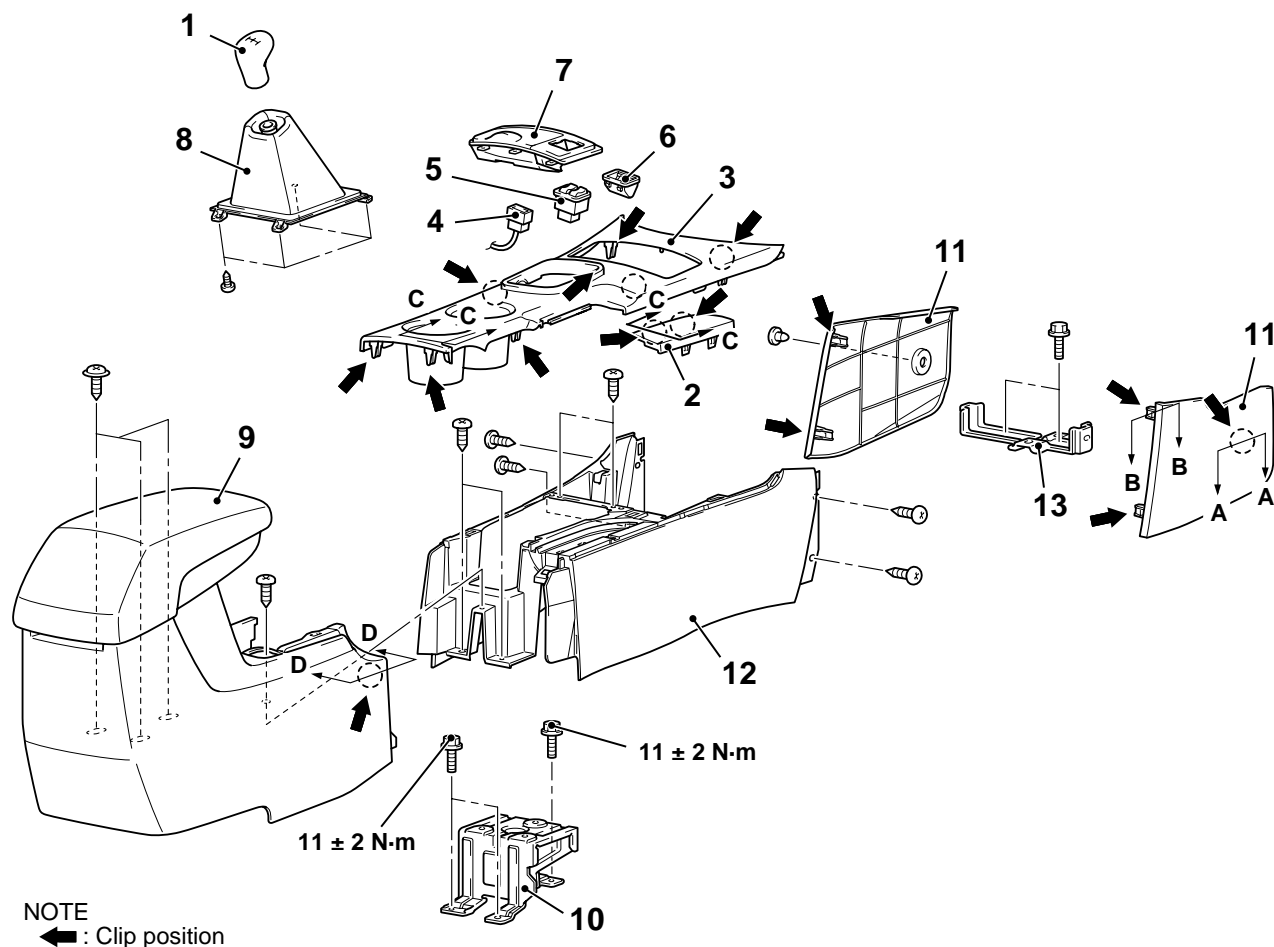
10. Centre cover driver's side
11. Glove box striker
12. Instrument panel undercover passenger's side
13. Side air outlet assembly (L.H.)
14. Instrument panel holder
15. Instrument panel
 - Photo sensor (Refer to GROUP 55B, Sensors [P.55B-103](#)).

FLOOR CONSOLE ASSEMBLY

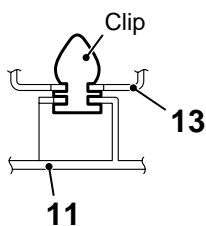
REMOVAL AND INSTALLATION

M1521002200325

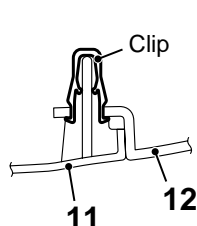
<L.H. DRIVE VEHICLES>



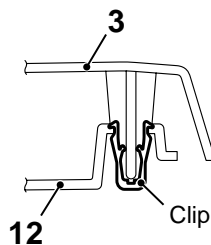
Section A – A



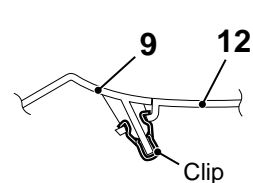
Section B – B



Section C – C



Section D – D



AC301787AB

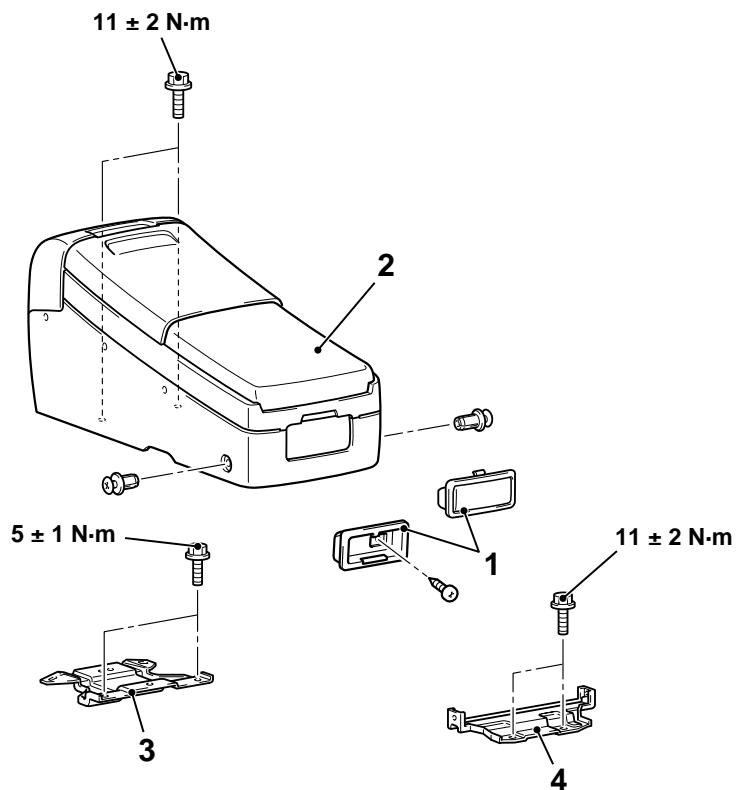
Removal steps

1. Shift knob
2. Floor console panel cover
3. Front floor console panel
4. Harness connector <Vehicles with heated seat>
5. Heated seat switch <Vehicles with heated seat>
6. Coin holder <Vehicles without heated seat>

Removal steps (Continued)

7. Ashtray
8. Shift lever cover
9. Rear floor console assembly
10. Rear floor console bracket
11. Front floor console lower side cover
12. Front floor console
13. Front floor console bracket

<R.H. DRIVE VEHICLES>



AC212288AB

Removal steps

1. Floor console ashtray
2. Floor console assembly

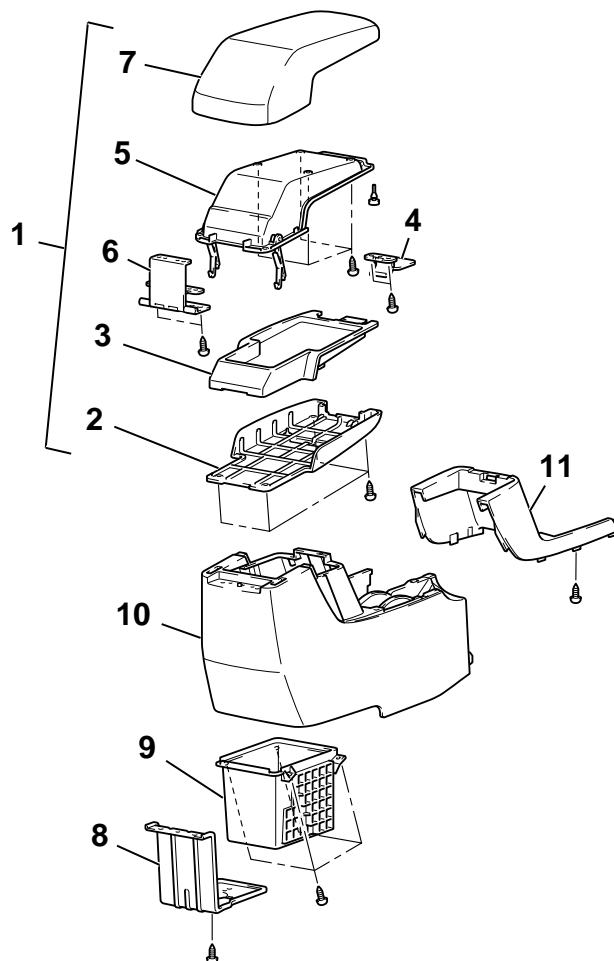
Removal steps (Continued)

3. Floor console centre bracket
4. Floor console rear bracket

DISASSEMBLY AND REASSEMBLY

M1521002400136

<L.H. DRIVE VEHICLES>

**Disassembly steps**

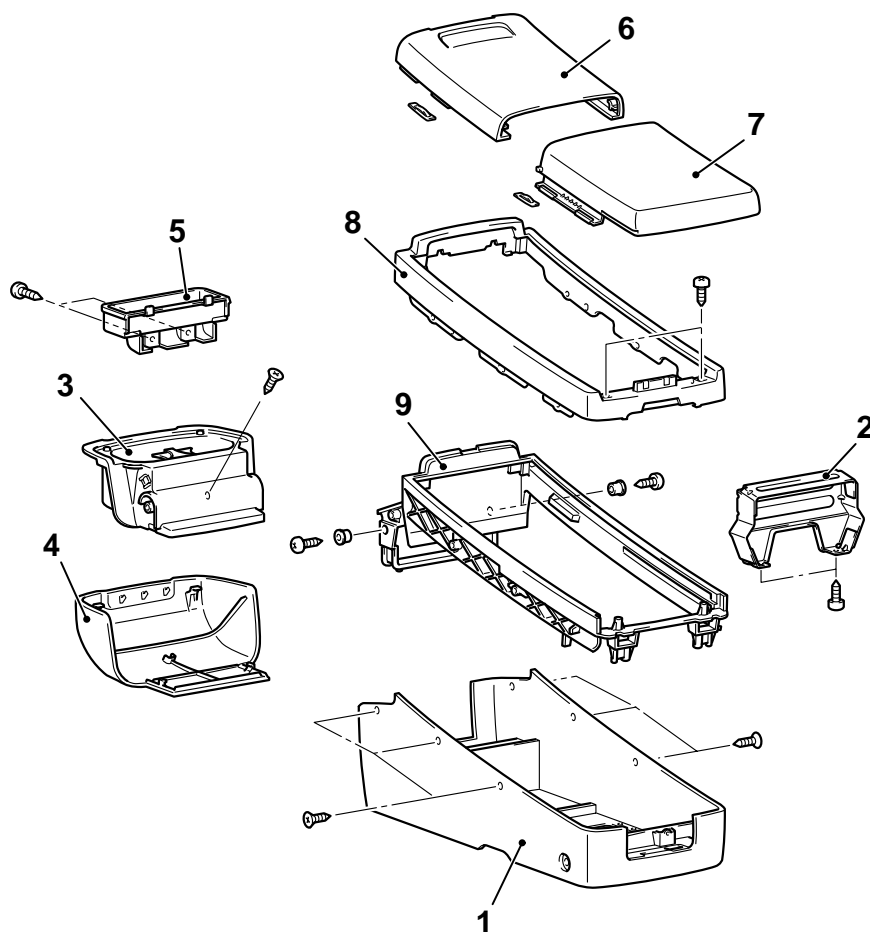
1. Lid assembly
2. Tray outer
3. Tray inner
4. Lock knob
5. Lid inner
6. Hinge assembly

AC106397AH

Disassembly steps (Continued)

7. Lid cover
8. Hinge support bracket
9. Rear console box
10. Rear console
11. Rear console panel

<R.H. DRIVE VEHICLES>



AC212290 AB

Disassembly steps

1. Lower floor console
2. Console bracket
3. Floor console holder
4. Floor console cover
5. Floor console box

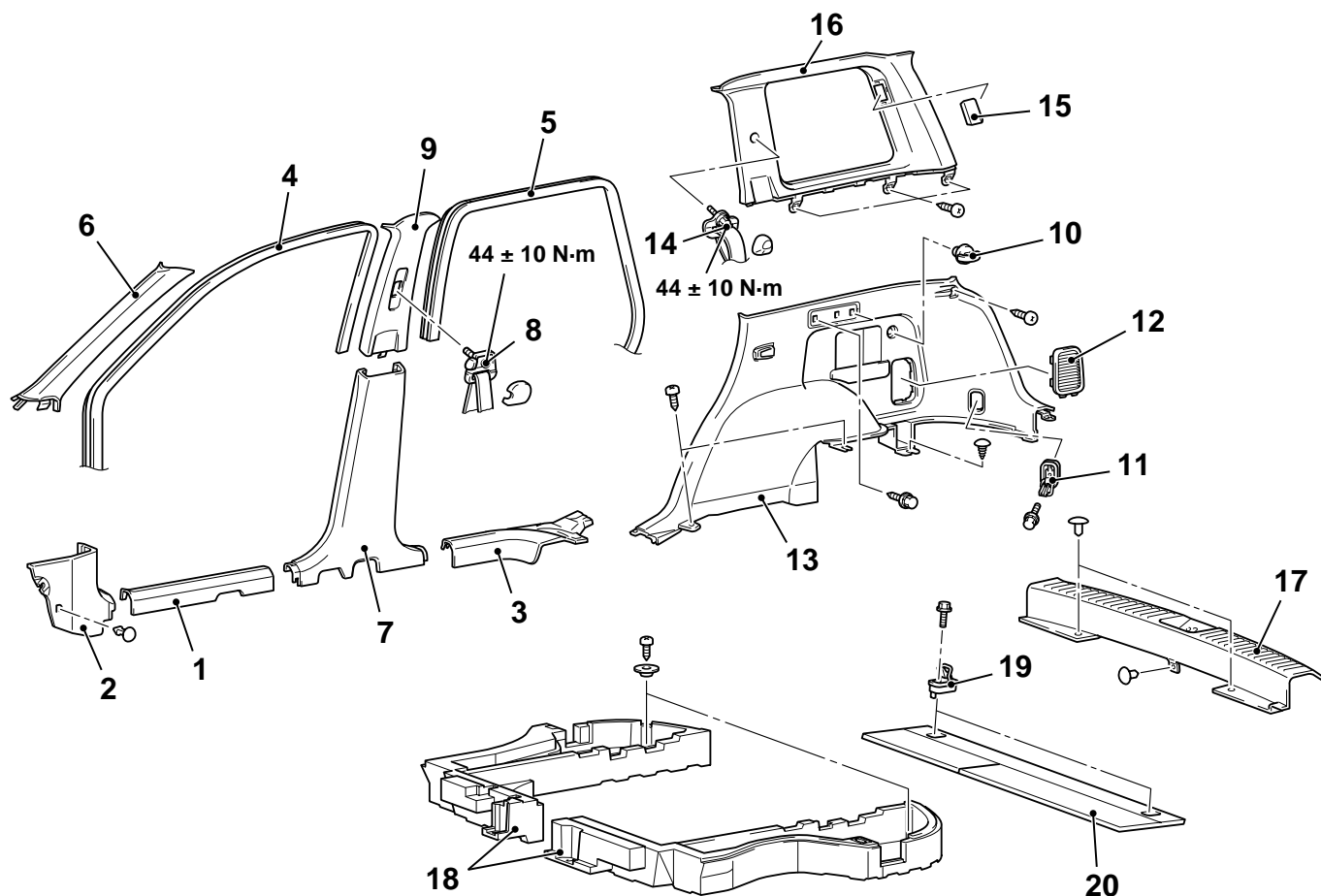
Disassembly steps (Continued)

6. Console front lid
7. Console rear lid
8. Floor console upper
9. Console centre

TRIMS

REMOVAL AND INSTALLATION

M1521001100488

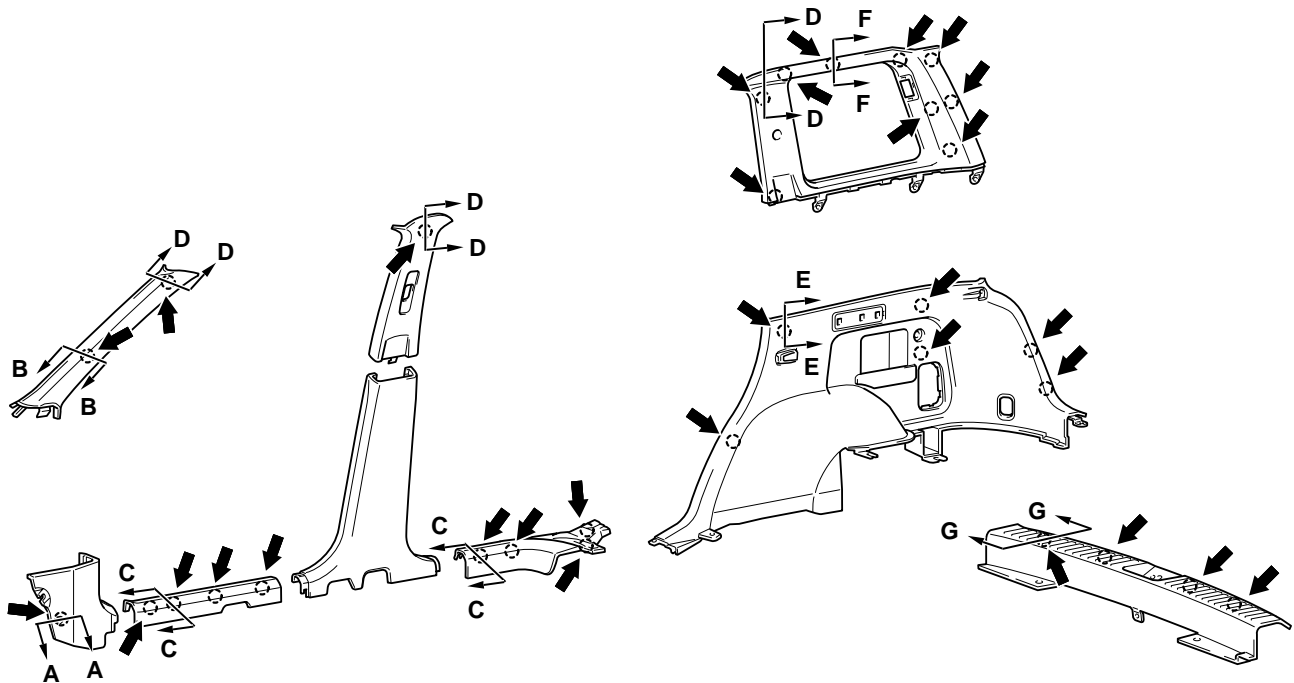


AC301338AB

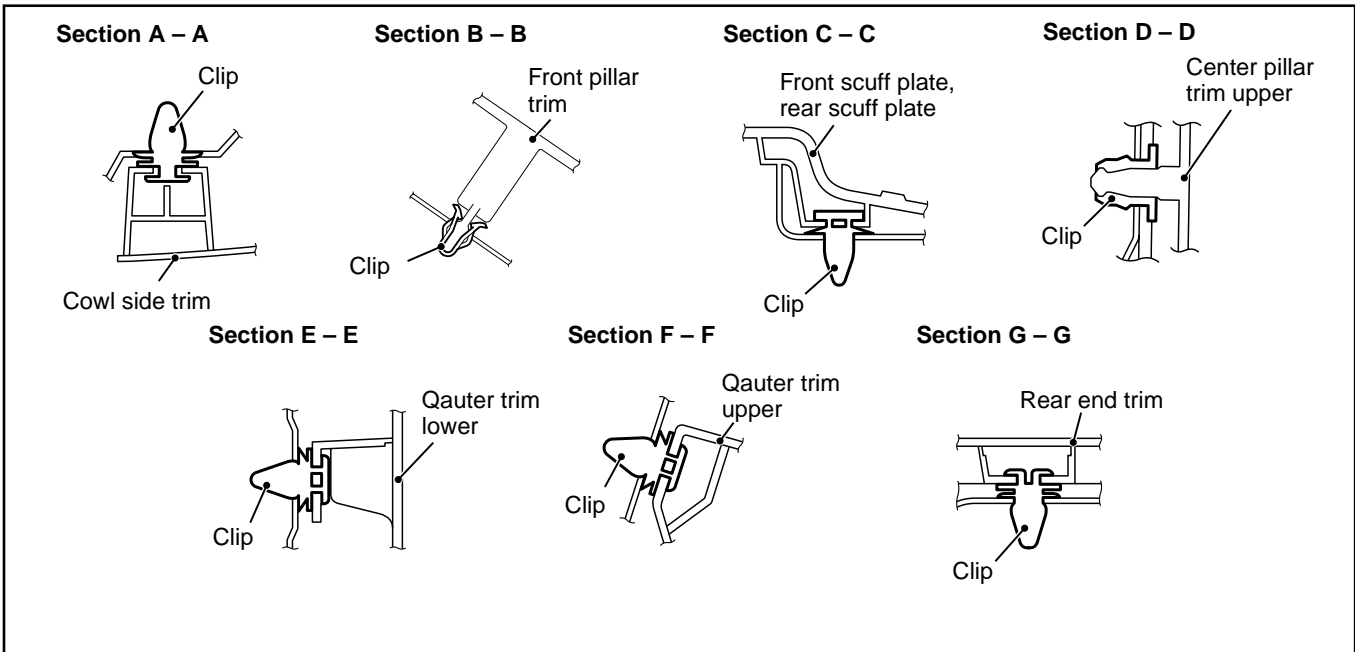
<<A>>

- | | |
|---|---|
| 1. Front scuff plate | 10. Convenience hook |
| 2. Cowl side trim | 11. Parcel strap hook A |
| • Rear seat cushion assembly (Refer to P.52A-36.) | 12. Ventilation cap |
| 3. Rear scuff plate | 13. Quarter trim lower |
| 4. Front door opening trim | 14. Rear seat belt shoulder anchor bolt |
| 5. Rear door opening trim | 15. Quarter trim upper cap |
| 6. Front pillar trim | 16. Quarter trim upper |
| 7. Centre pillar trim lower | 17. Rear end trim |
| 8. Front seat belt shoulder anchor bolt | 18. Luggage floor box |
| 9. Centre pillar trim upper | 19. Parcel strap hook B |
| | 20. Rear seat board |

CLIP AND CLAW POSITION

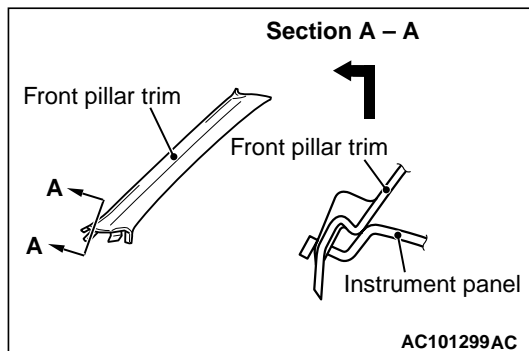


NOTE
 : Clip position



REMOVAL SERVICE POINT**<<A>> FRONT PILLAR TRIM REMOVAL**

Unclip the front pillar trim and slide out it in the direction shown.

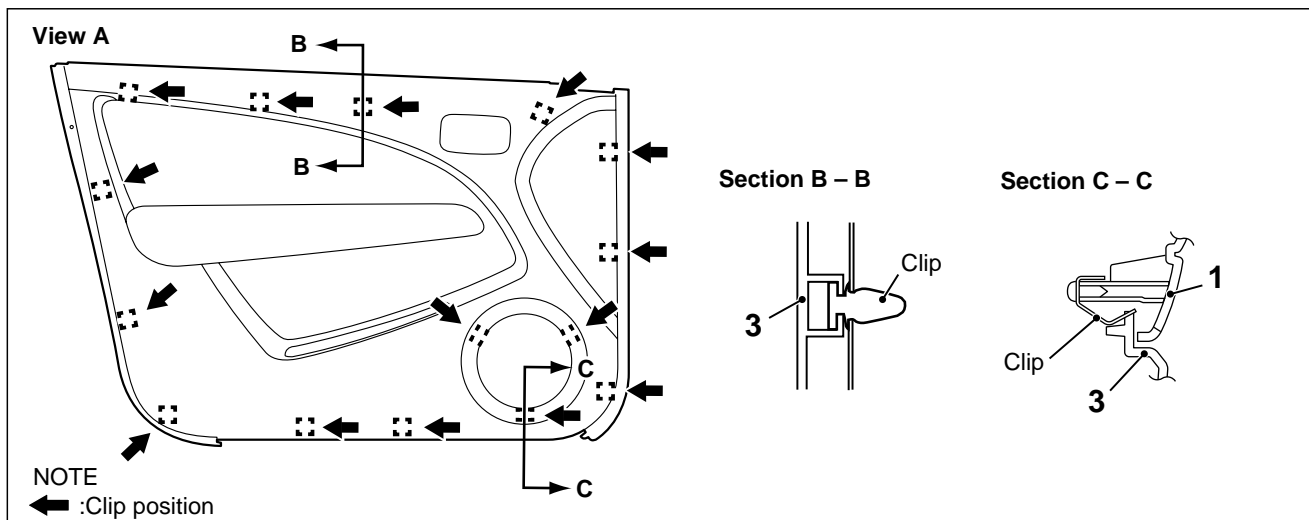
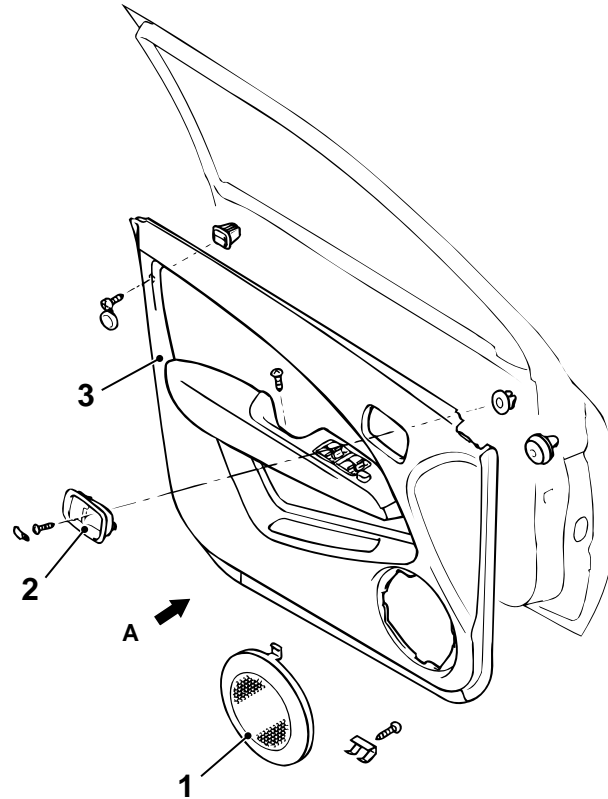


DOOR TRIM

REMOVAL AND INSTALLATION

M1521006400202

<Front door trim>



AC106408AB

Removal steps

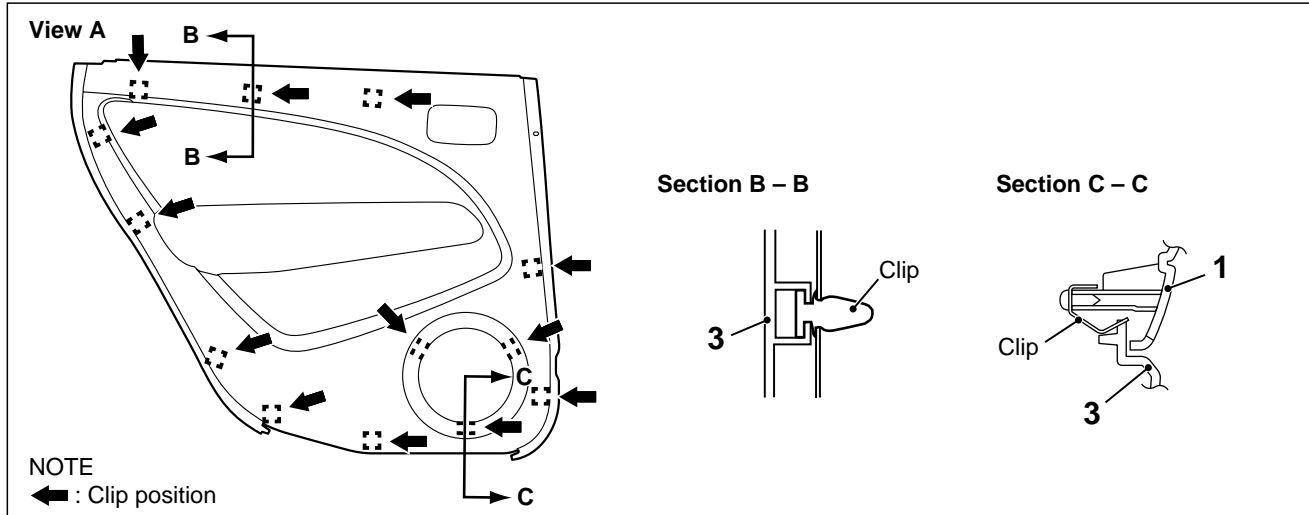
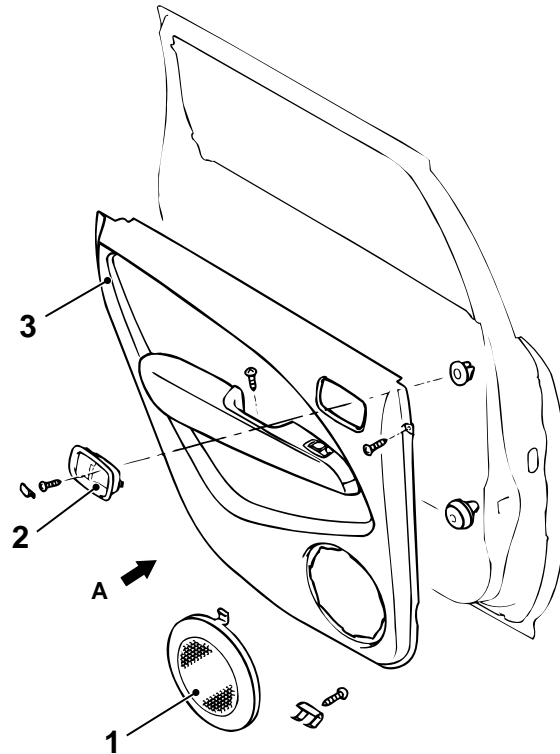
1. Speaker garnish
2. Door inside handle cover

Removal steps (Continued)

- Delta cover (Refer to GROUP 51, Door Mirror [P.51-57](#)).
- 3. Door trim assembly

<<A>>

<Rear door trim>



AC106406AB

Removal steps

1. Speaker garnish

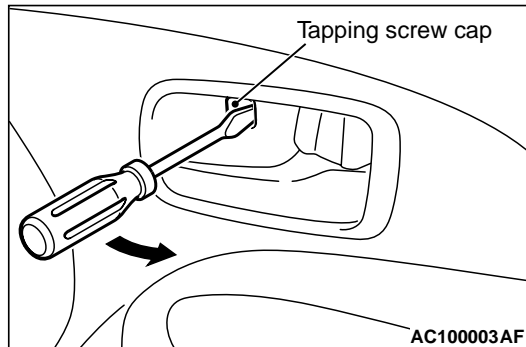
<<A>>

Removal steps (Continued)

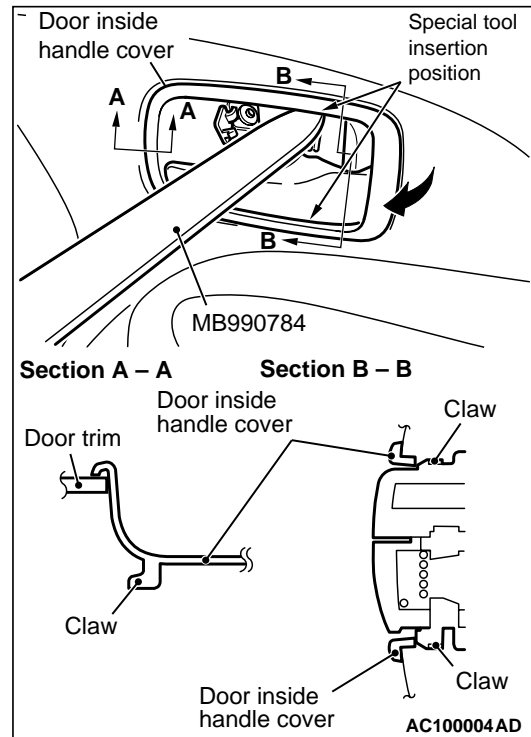
2. Door inside handle cover
3. Door trim assembly

REMOVAL SERVICE POINT

<<A>> DOOR INSIDE HANDLE COVER REMOVAL



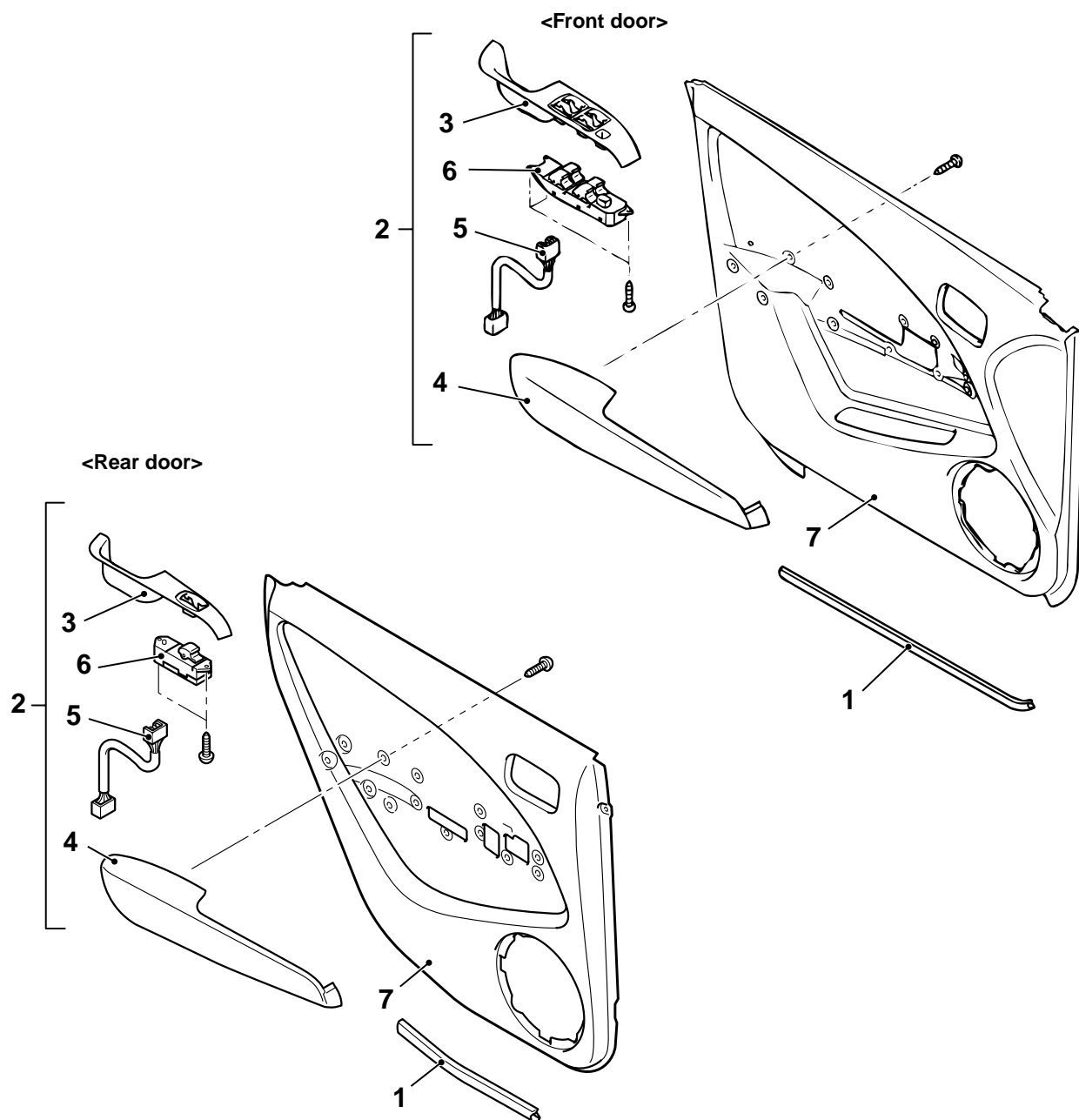
1. Insert a flat-tipped screwdriver into the back end of the tapping screw cap of the door inside handle cover.
2. Try the screwdriver in the direction of the arrow. Remove the cap, then remove the tapping screw.



3. Insert the special tool ornament remover (MB990784) in the gap between the door inside handle cover and door inside handle in the area shown. Then remove the thumb clamp of the door inside handle cover and door inside handle.
4. Insert a special tool from the back end of the door inside handle cover to lift it in the direction of the arrow. Then remove the door inside handle cover.

DISASSEMBLY AND REASSEMBLY

M1521006900081



AC212484AB

Disassembly steps

1. Door weather-strip
2. Arm rest assembly
3. Power window switch panel assembly
4. Arm rest

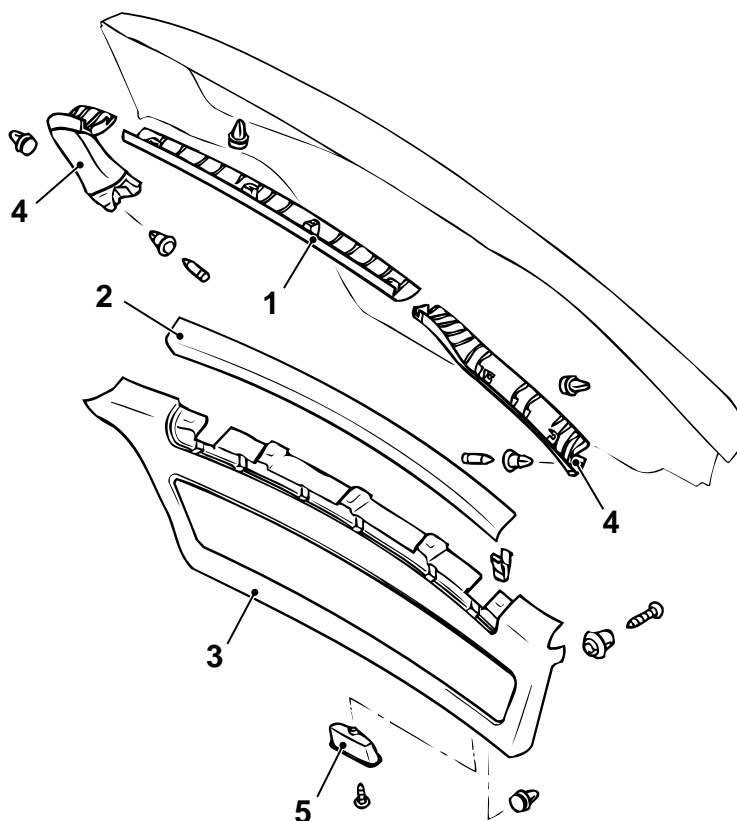
Disassembly steps (Continued)

5. Door harness
6. Power window switch
7. Door trim

TAILGATE TRIM

REMOVAL AND INSTALLATION

M1521006500094



AC102381AC

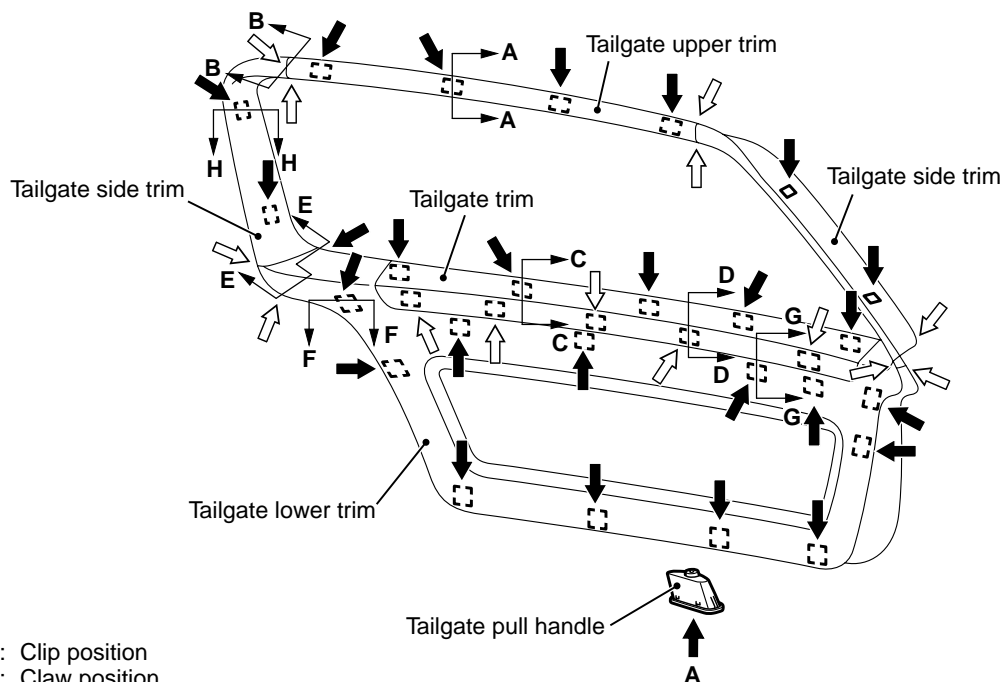
Removal steps

1. Tailgate upper trim
2. Tailgate trim
3. Tailgate lower trim

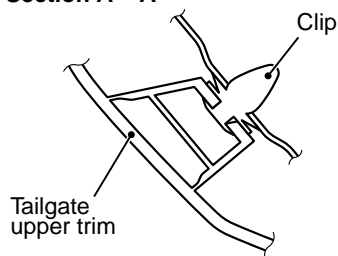
Removal steps (Continued)

4. Tailgate side trim
5. Tailgate pull handle

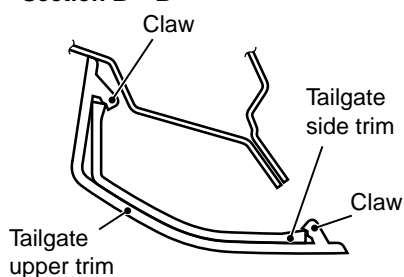
CLIP AND CLAW POSITION



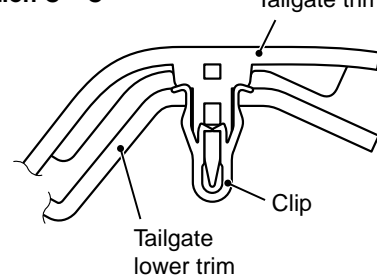
Section A – A



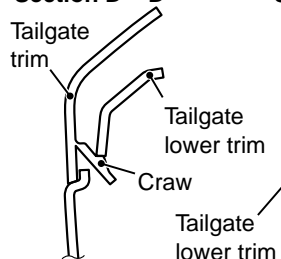
Section B – B



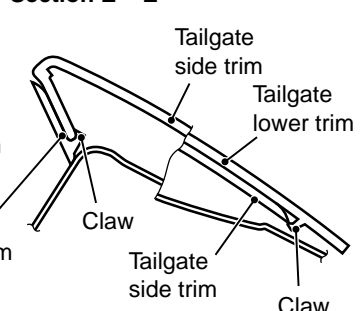
Section C – C



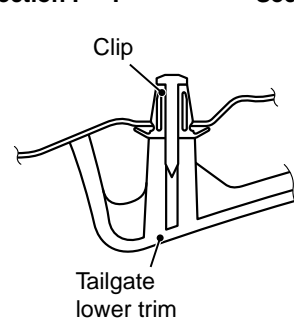
Section D – D



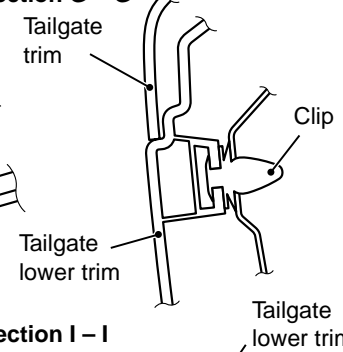
Section E – E



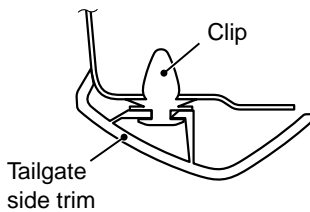
Section F – F



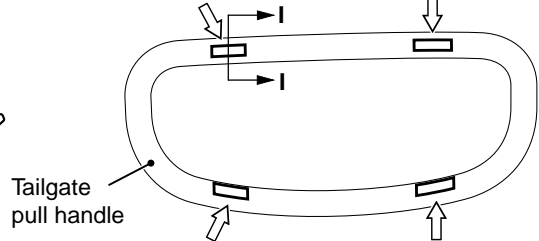
Section G – G



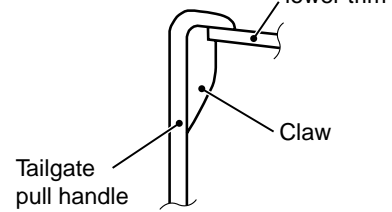
Section H – H



View A



Section I – I



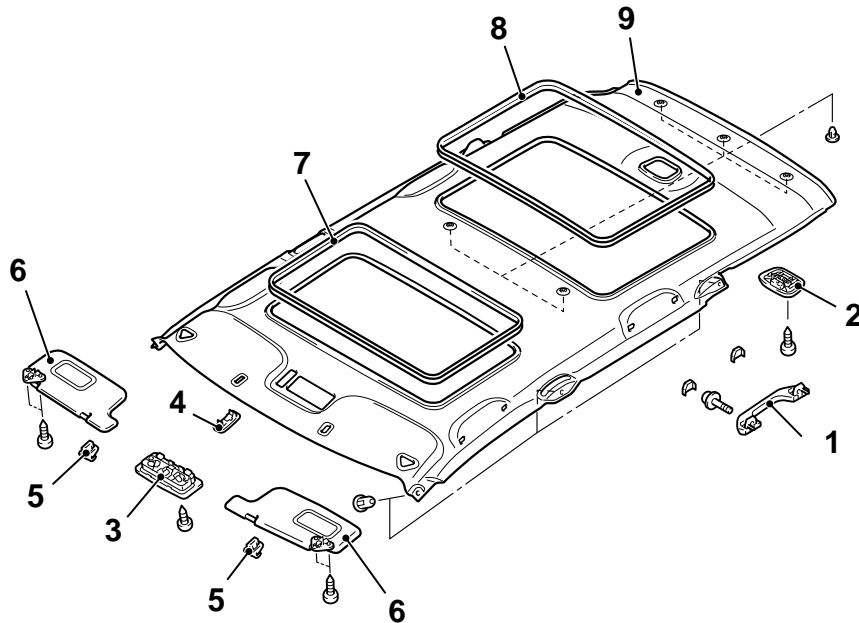
HEADLINING

REMOVAL AND INSTALLATION

M1521001400304

Pre-removal and Post-installation Operation

- Removal and Installation of Front Pillar Trim, Centre Pillar Trim Upper, Quarter Trim Upper (Refer to P.52A-18).



AC301290AB

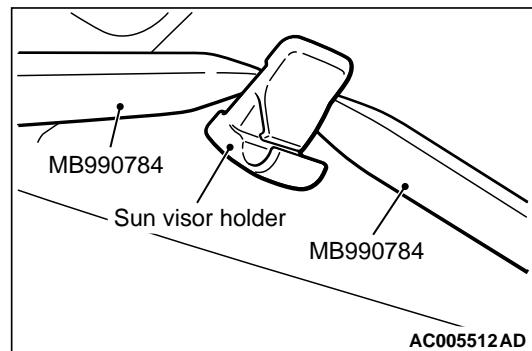
Removal steps

1. Assist grip
2. Rear room lamp assembly
3. Front room lamp/map lamp assembly
4. Sun roof switch cover <Vehicles with sun roof>
5. Sun visor holder
6. Sun visor assembly
7. Front headlining trim <Vehicles with sun roof>
8. Rear headlining trim <Vehicles with sun roof>
9. Headlining

<<A>>

REMOVAL SERVICE POINT

<<A>> SUN VISOR HOLDER REMOVAL



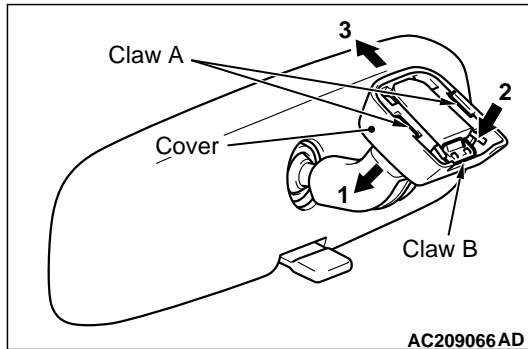
AC005512AD

Insert the special tool ornament remover (MB990784) into side claws of the sun visor holder through the both sides to remove the hinges.

INSIDE REAR VIEW MIRROR

M1521002600185

REMOVAL SERVICE POINTS



1. Disengage the claw A and lower the cover toward arrow 1 direction.
2. Push the claw B toward arrow 2 direction to unlock, and pull out the mirror toward arrow 3 direction.

FRONT SEAT ASSEMBLY

REMOVAL AND INSTALLATION

M1522001300407

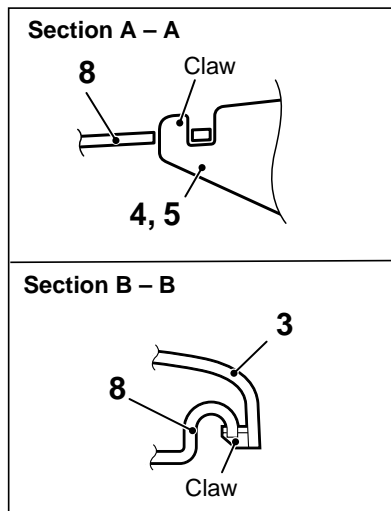
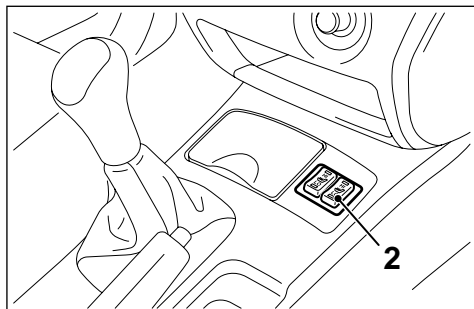
<L.H. DRIVE VEHICLES>

⚠ CAUTION

For the removal of the front seat assembly on vehicles with the side air bags, refer to GROUP 52B, Service Precautions [P.52B-4](#) and Air Bag Module and Clock Spring [P.52B-179](#).

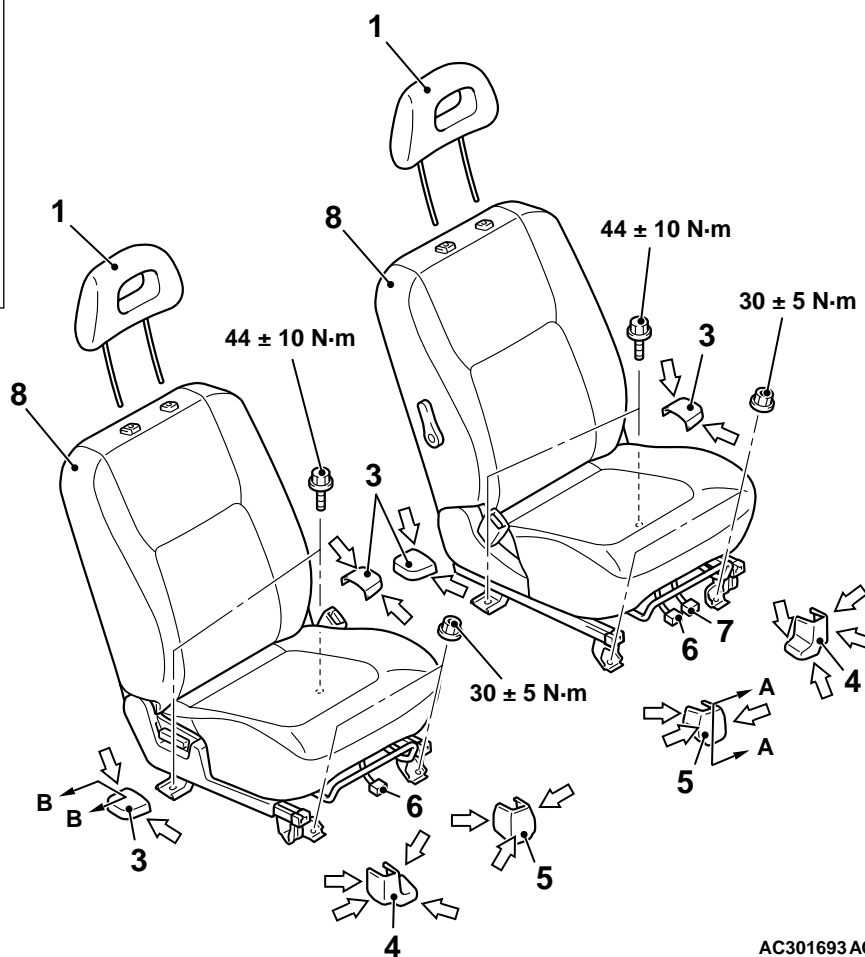
Pre-removal and Post-installation Operation

Removal and Installation of Rear Floor Console Assembly
(Refer to [P.52A-14](#).)



NOTE

↔ : Claw position



AC301693 AC

1. Headrest
 2. Heated seat switch <Vehicles with heated seat>
- Front seat assembly removal steps**
3. Front seat anchor cover
 4. Seat anchor cover outer
 5. Seat anchor cover inner

Front seat assembly removal steps (Continued)

6. Harness connector <Vehicles with side-air bag>
7. Harness connector <Vehicles with heated seat>
8. Front seat assembly

>>A<<

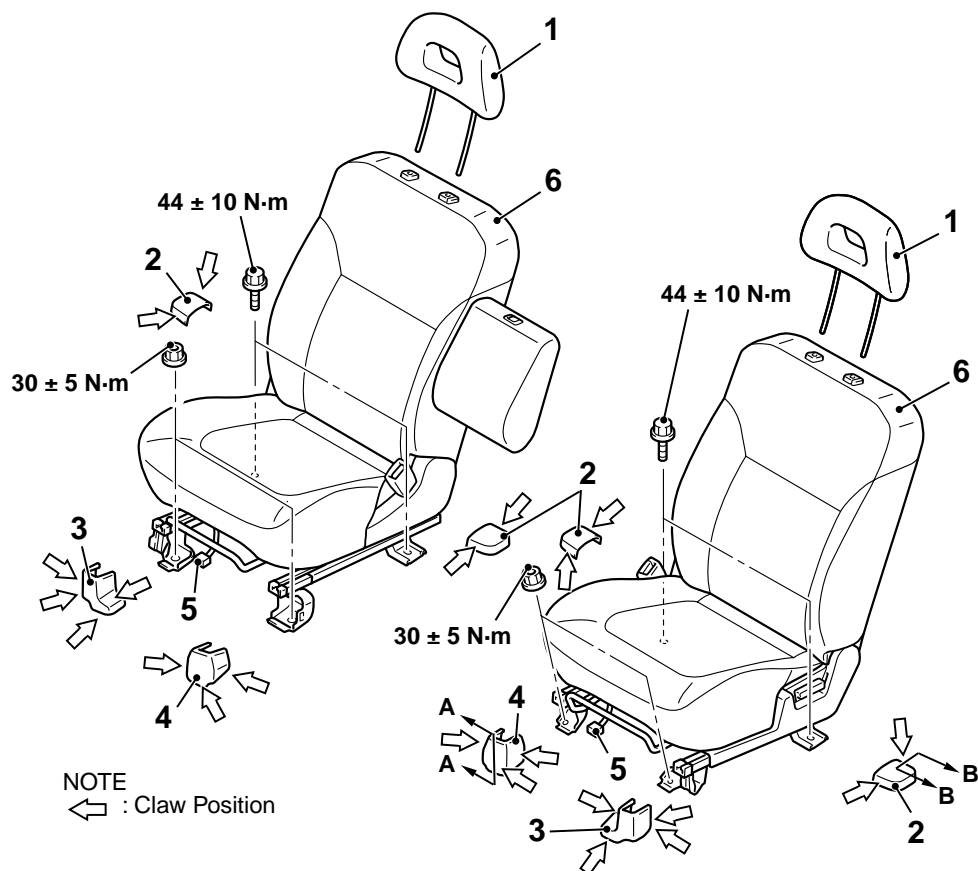
<R.H. DRIVE VEHICLES>

CAUTION

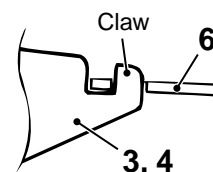
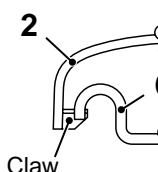
For the removal of the front seat assembly on vehicles with the side air bags, refer to GROUP 52B, Service Precautions (Refer to P.52B-4) and Air Bag Module and Clock Spring (Refer to P.52B-179).

Pre-removal and Post-installation Operation

Removal and Installation of Floor Console Assembly (Refer to P.52A-14.)



1. Head restraint
 2. Front seat anchor cover
 3. Seat anchor cover outer
 4. Seat anchor cover inner
- Front seat assembly removal steps**

Section A – A**Section B – B**

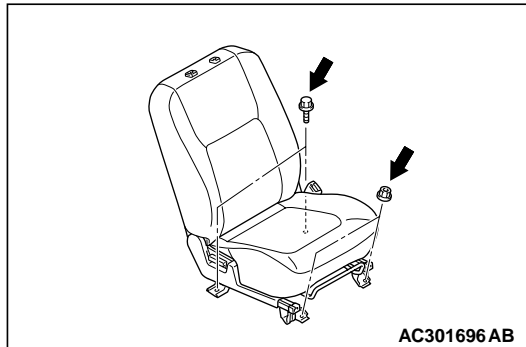
AC309222 AB

Front seat assembly removal steps (Continued)

5. Harness connector <Vehicles with side-air bag>
 6. Front seat assembly
- >>A<<

INSTALLATION SERVICE POINT

>>A<< FRONT SEAT ASSEMBLY INSTALLATION

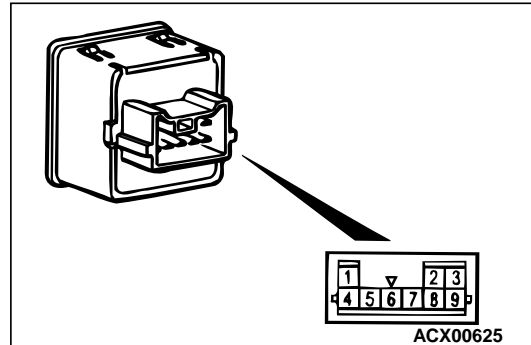


1. Temporarily tighten the nuts and bolts in all mounting locations shown in the illustration with no load applied to the front seat cushion and check the operation of the seat slide.
2. Tighten the nuts and bolts in all mounting locations to the specified torque.

INSPECTION

HEATED SEAT SWITCH CHECK

M1522005500061



1. Check for continuity between terminals.

Switch position		Tester connection	Specified condition
Driver's seat side	HI	1 - 3, 1 - 5, 1 - 8, 3 - 5, 3 - 8, 5 - 8	Less than 2 ohms
	OFF	1 - 3, 1 - 5, 1 - 8, 3 - 5, 3 - 8, 5 - 8	Open circuit
	LO	3 - 5, 3 - 8, 5 - 8	Less than 2 ohms
Front passenger's seat side	HI	4 - 5, 4 - 8, 4 - 9, 5 - 8, 5 - 9, 8 - 9	Less than 2 ohms
	OFF	4 - 5, 4 - 8, 4 - 9, 5 - 8, 5 - 9, 8 - 9	Open circuit
	LO	5 - 8, 5 - 9, 8 - 9	Less than 2 ohms

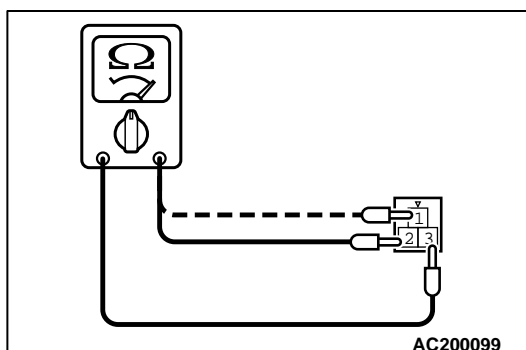
2. Check that the indicator is lighted at HI or LO when battery voltage is supplied to terminal 5, and terminal 8 is grounded.
3. Check that indicator is lighted when battery voltage is supplied to terminals 2 and 6.

Measure the resistance between terminals.

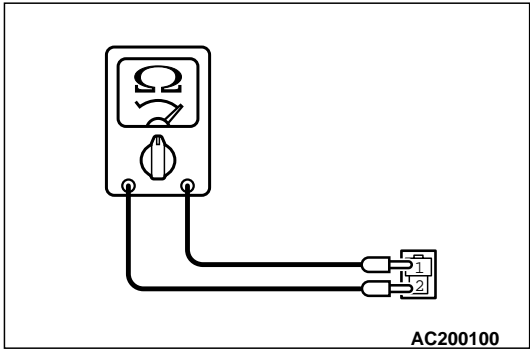
Standard value:

Measured terminals	Resistance value	Note
2 - 3	Approximately $4.8 \Omega \pm 10 \%$	At room temperature 20 °C
1 - 3	$5.2 \Omega \pm 10 \%$	

SEAT CUSHION HEATER CHECK

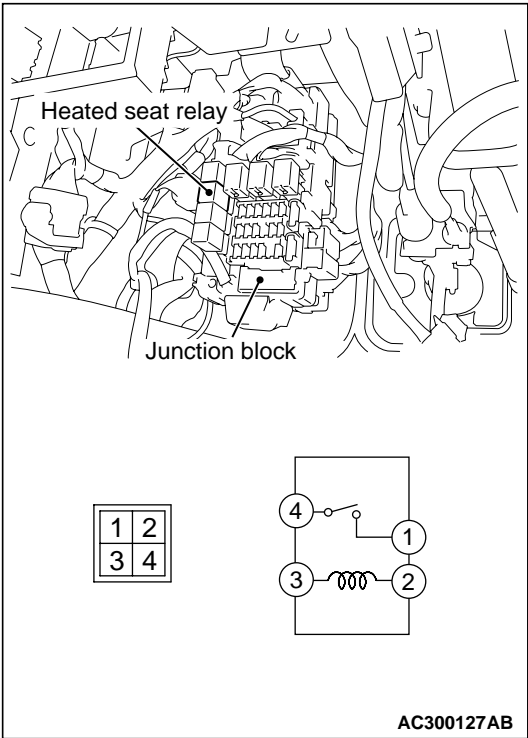


SEATBACK HEATER CHECK



Measure the resistance between terminals.
Standard value: Approximately 4.8 Ω ± 10 %
(At room temperature 20 °C)

HEATED SEAT RELAY CONTINUITY CHECK

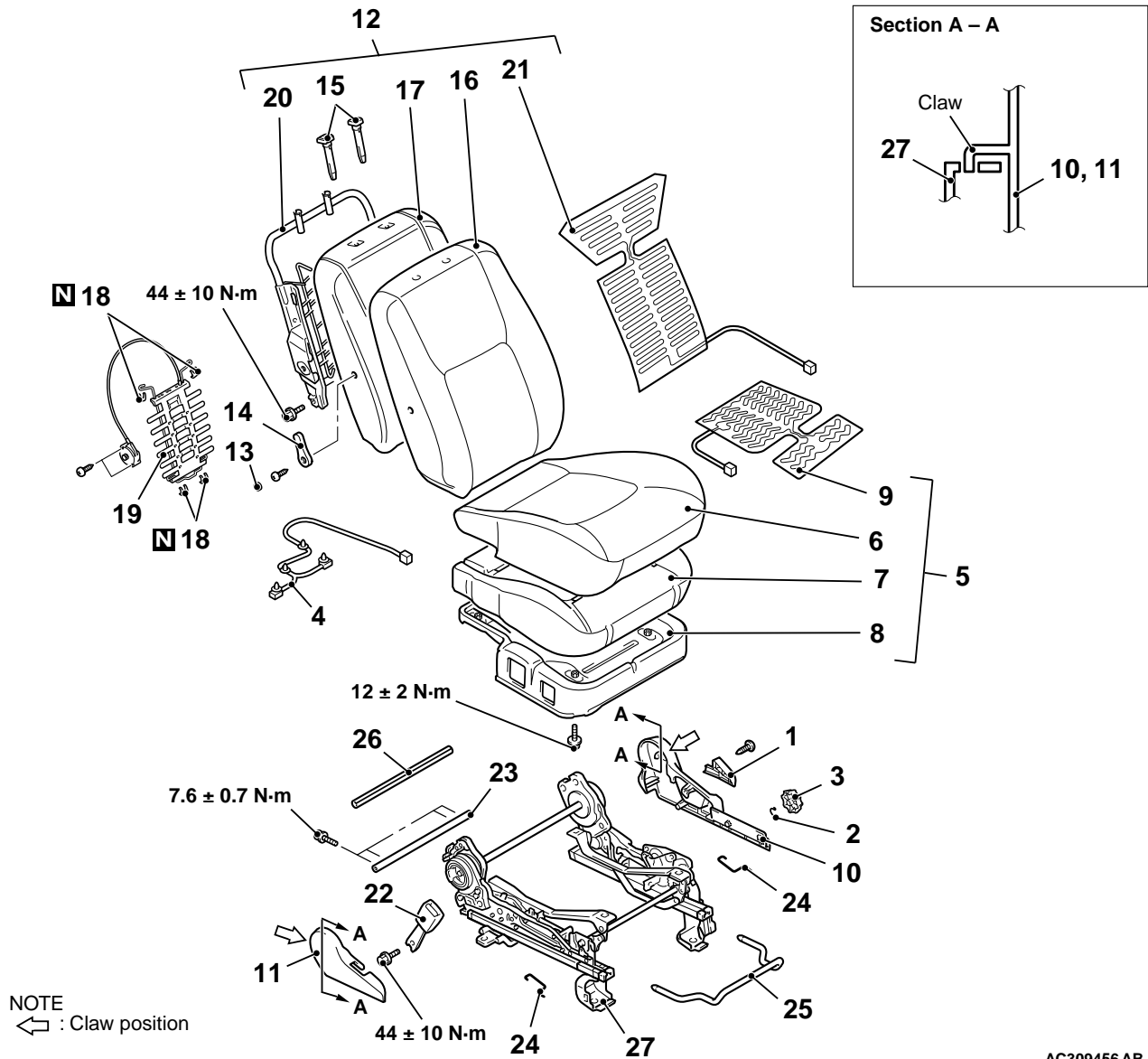


Battery voltage	Tester connection	Specified condition
Not applied	1 - 4	Open circuit
<ul style="list-style-type: none">Connect terminal 3 to the positive battery terminalConnect terminal 2 to the negative battery terminal	1 - 4	Less than 2 ohms

DISASSEMBLY AND REASSEMBLY

M1522001500490

<L.H. DRIVE VEHICLES>



AC309456 AB

Disassembly steps

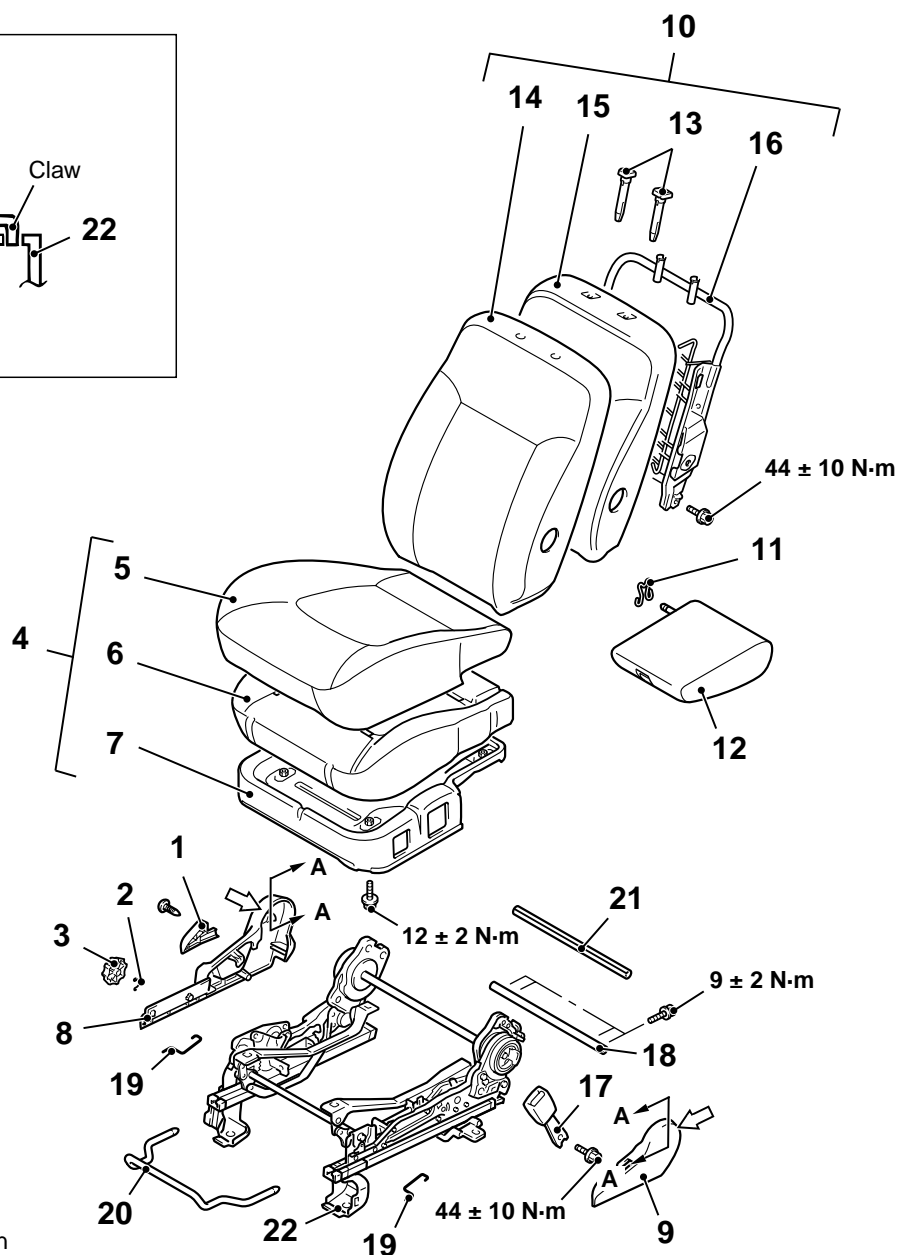
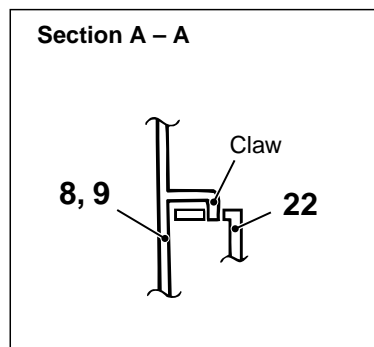
1. Reclining knob
2. Pin
3. Height adjuster knob
4. Heater harness assembly
<Vehicles with heated seat>
5. Front seat cushion assembly
6. Front seat cushion cover
7. Front seat cushion pad
8. Front seat cushion frame
9. Seat cushion heater <Vehicles with heated seat>
10. Reclining cover
11. Shield cover
12. Front seatback assembly
13. Lumbar support cap

<<A>>

Disassembly steps (Continued)

14. Lumbar support lever
15. Headrest guide
16. Front seatback cover
17. Front seatback pad
18. Lumbar support clip
19. Lumbar support
20. Front seatback frame
21. Seatback heater <Vehicles with heated seat>
22. Inner seat belt
23. Shaft
24. Pin
25. Slide handle
26. Shaft protector
27. Seat slide adjuster

<R.H. DRIVE VEHICLES>



NOTE
 : Claw position

AC309458AB

Disassembly steps

1. Reclining knob
2. Pin
3. Height adjuster knob
4. Front seat cushion assembly
5. Front seat cushion cover
6. Front seat cushion pad
7. Front seat cushion frame
8. Reclining cover
9. Shield cover
10. Front seatback assembly
11. Pin (Driver's side)

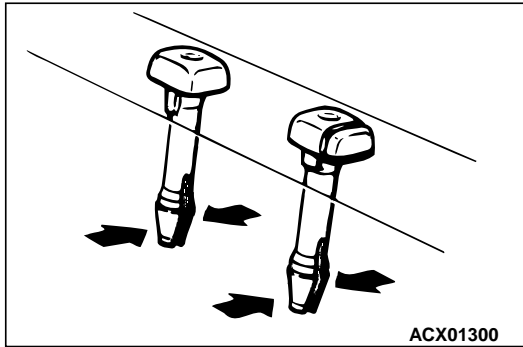
<<A>>

Disassembly steps (Continued)

12. Arm rest assembly (Driver's side)
13. Headrest guide
14. Front seatback cover
15. Front seatback pad
16. Front seatback frame
17. Inner seat belt
18. Shaft
19. Pin
20. Seat slide handle
21. Shaft protector
22. Seat slide adjuster

REMOVAL SERVICE POINT

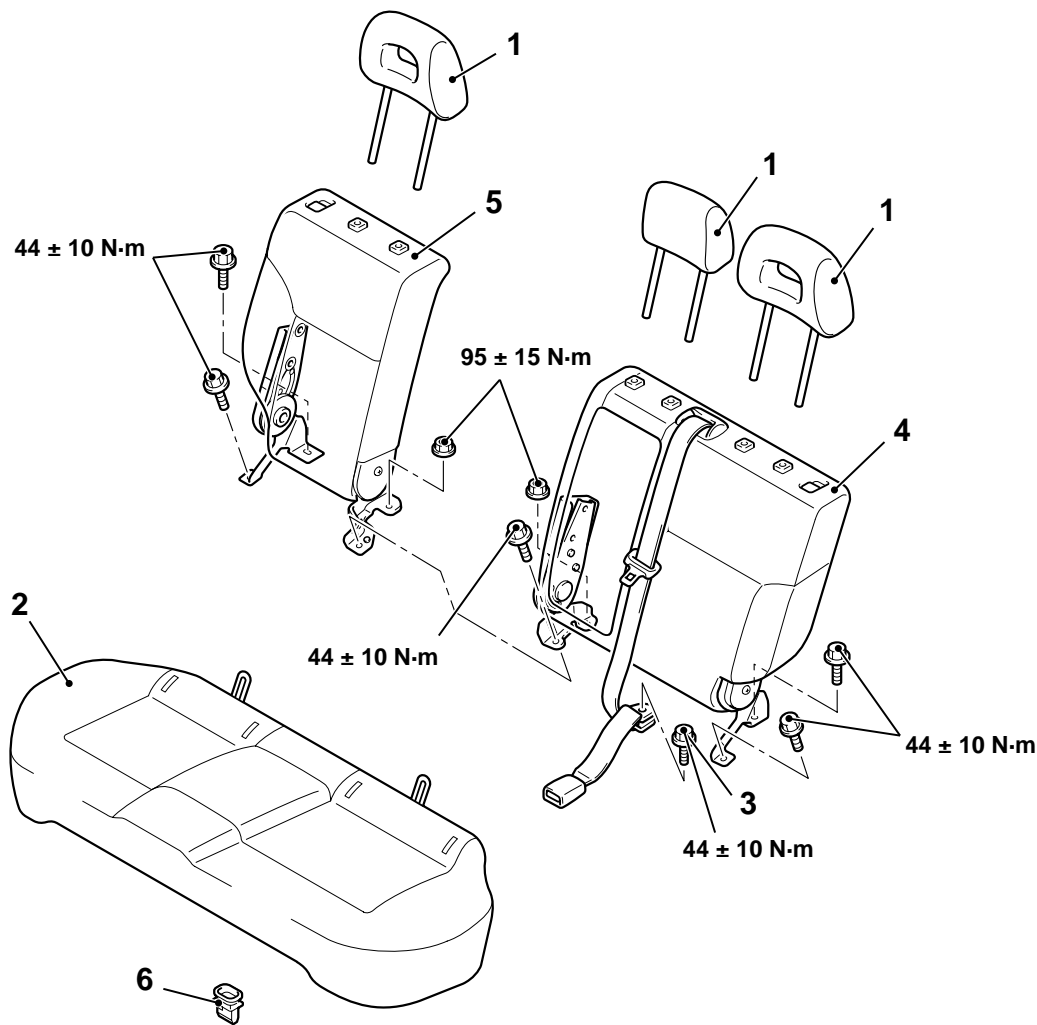
<<A> HEADREST GUIDE REMOVAL



REAR SEAT ASSEMBLY

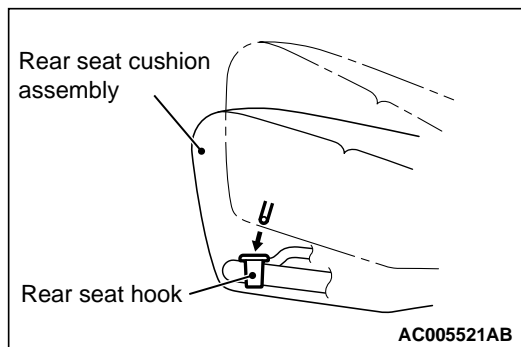
REMOVAL AND INSTALLATION

M1522001800305



AC300146AB

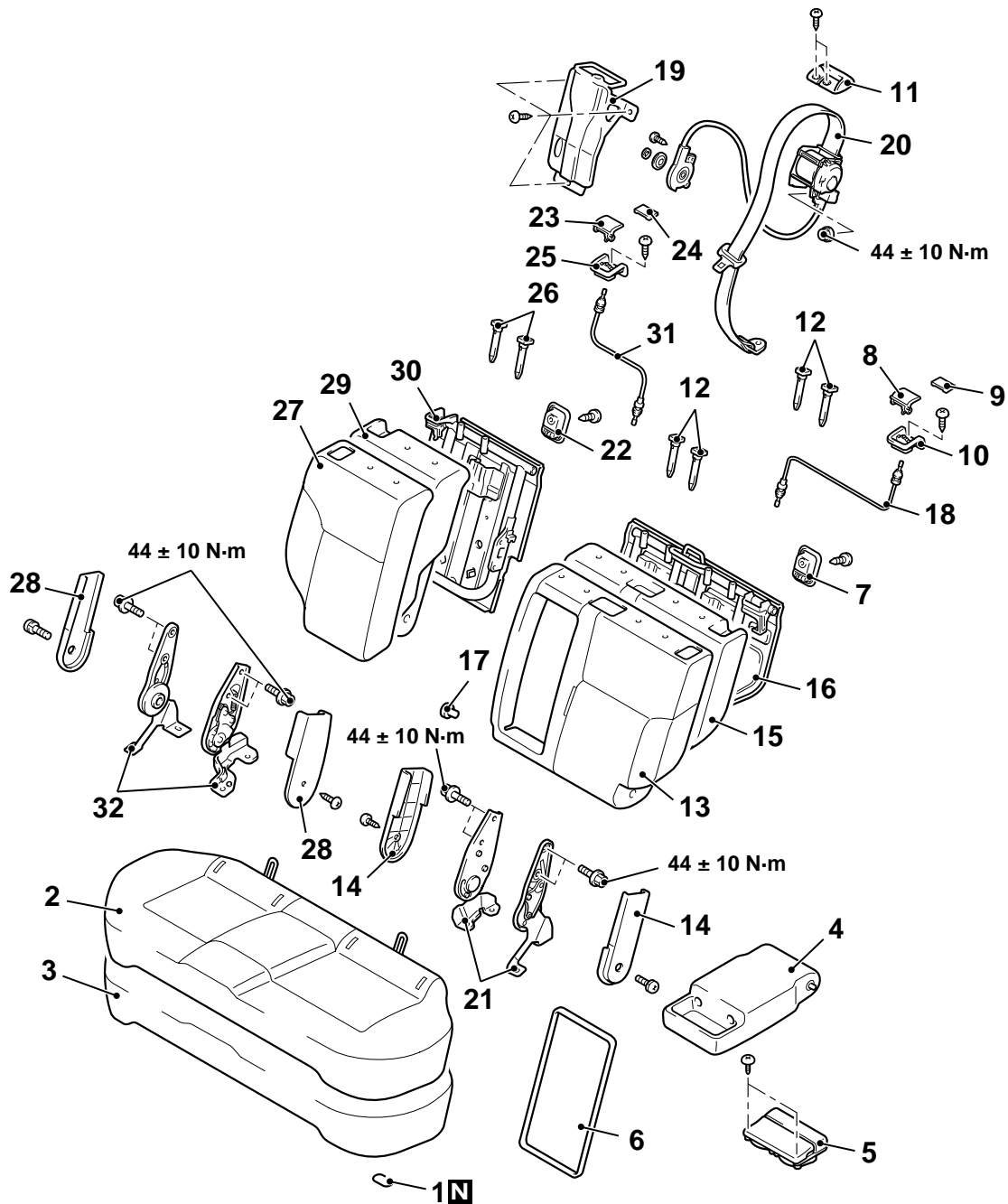
- >>A<<
1. Headrest
 2. Rear seat cushion assembly
 3. Inner seat belt and centre seat belt installation bolt
 4. Rear seatback assembly (L.H.)
 5. Rear seatback assembly (R.H.)
 6. Rear seat hook

Removal steps**INSTALLATION SERVICE POINT****>>A<< REAR SEAT CUSHION ASSEMBLY
INSTALLATION**

Fit the rear seat cushion into the rear seat hook securely.

DISASSEMBLY AND REASSEMBLY

M1522002000368



Rear seat cushion disassembly steps

1. Hog ring
2. Rear seat cushion cover
3. Rear seat cushion pad

Rear seatback (L.H. side) disassembly steps

4. Arm rest assembly
5. Arm rest cup holder
6. Arm rest board
7. Tether anchor garnish
8. Reclining knob
9. Cap

<<A>>

Rear seatback (L.H. side) disassembly steps (Continued)

10. Reclining knob garnish
11. Centre seat belt garnish
12. Headrest guide
13. Rear seatback cover
14. Reclining cover
15. Rear seatback pad
16. Rear seatback frame assembly
17. Arm rest bushing
18. Reclining cable
19. Centre seat belt cover

AC200082AB

**Rear seatback (L.H. side)
disassembly steps (Continued)**

- 20. Centre seat belt
- 21. Reclining adjuster

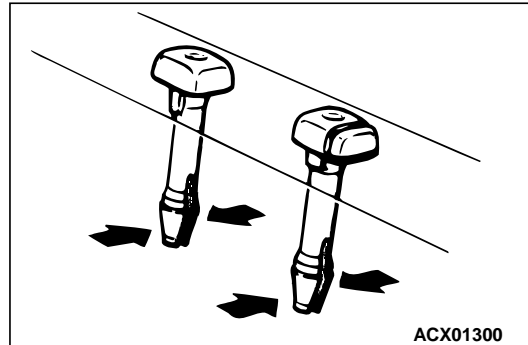
**Rear seatback (R.H. side)
disassembly steps**

- 22. Tether anchor garnish
- 23. Reclining knob
- 24. Cap
- 25. Reclining knob garnish
- 26. Headrest guide
- 27. Rear seatback cover
- 28. Reclining adjuster cover
- 29. Rear seatback pad
- 30. Rear seatback frame
- 31. Reclining cable
- 32. Reclining adjuster

<<A>>

REMOVAL SERVICE POINT

<<A>> HEADREST GUIDE REMOVAL



FRONT SEAT BELT

REMOVAL AND INSTALLATION

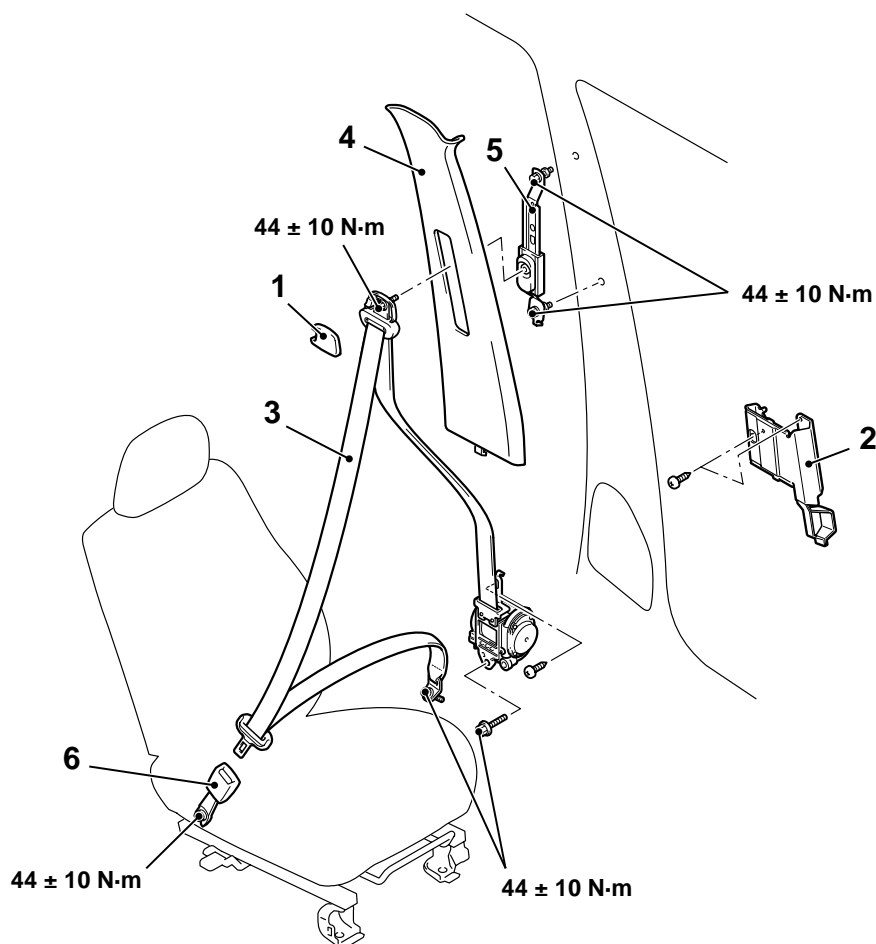
M1523001300392

CAUTION

SRS: Before removing and installing the seat belts with pre-tensioner, refer to GROUP 52B, Seat Belt with Pre-tensioner [P.52B-188](#).

Pre-removal and Post-installation Operation

- Turn the ignition key to the LOOK (OFF) position.
- Disconnect the negative battery terminal.



AC301332AC

Outer seat belt removal steps

1. Sash guide cover
- Centre pillar trim lower (Refer to [P.52A-18](#).)
2. Bracket
3. Outer seat belt (Refer to GROUP 52B, Seat Belt with Pre-tensioner [P.52B-188](#).)

Outer seat belt removal steps

4. Centre pillar trim upper (Refer to [P.52A-18](#).)

Adjustable seat belt anchor

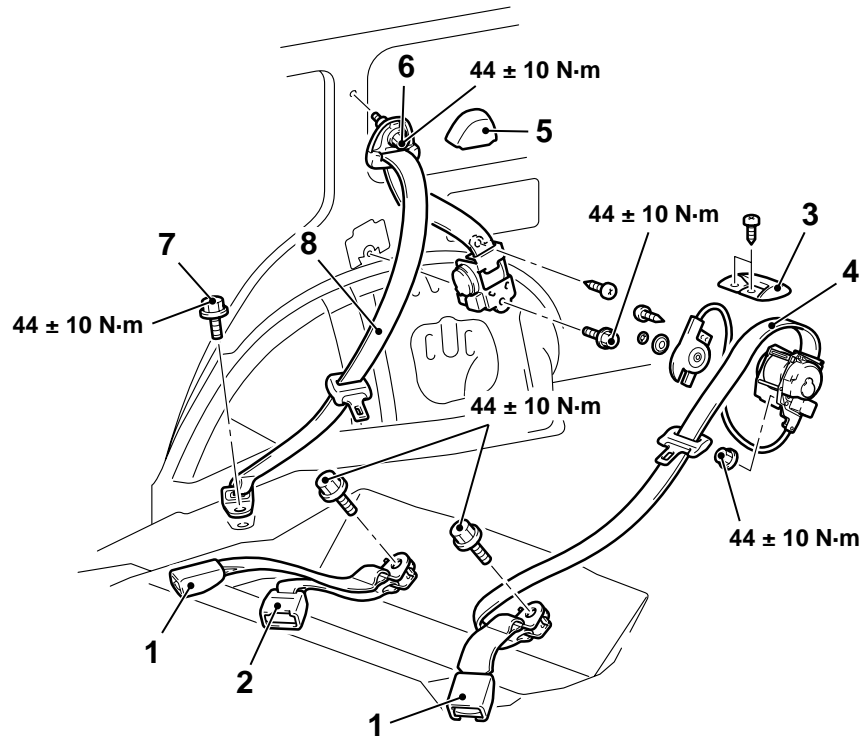
Inner seat belt removal steps

- Shield cover (Refer to [P.52A-33](#).)
- 6. Inner seat belt

REAR SEAT BELT

REMOVAL AND INSTALLATION

M1523001600315



AC301334AB

Removal steps

- Rear seatback assembly (Refer to [P.52A-36](#)).
- 1. Inner seat belt
- 2. Centre seat belt inner
- 3. Centre seat belt garnish
- Quarter trim upper (Refer to [P.52A-18](#)).

Removal steps (Continued)

4. Centre seat belt outer (Refer to [P.52A-37](#)).
5. Sash guide cover
6. Seat belt shoulder anchor bolt
7. Seat belt lower anchor bolt
8. Outer seat belt