

GROUP 36

PARKING BRAKES

CONTENTS

GENERAL INFORMATION	36-2	REMOVAL AND INSTALLATION	36-7
SPECIFICATIONS	36-3	PARKING BRAKE PEDAL	
SERVICE SPECIFICATIONS	36-3	<R.H. drive vehicles>	36-8
ON-VEHICLE SERVICE	36-4	REMOVAL AND INSTALLATION	36-8
PARKING BRAKE LEVER STROKE CHECK AND ADJUSTMENT <L.H. drive vehicles>	36-4	PARKING BRAKE CABLE	36-9
PARKING BRAKE PEDAL STROKE CHECK AND ADJUSTMENT <R.H. drive vehicles>	36-4	REMOVAL AND INSTALLATION <L.H. drive vehicles>	36-9
PARKING BRAKE SWITCH CHECK	36-5	REMOVAL AND INSTALLATION <R.H. drive vehicles>	36-10
LINING RUNNING-IN	36-6	PARKING BRAKE LINING AND DRUM	36-12
PARKING BRAKE LEVER		REMOVAL AND INSTALLATION	36-12
<L.H. drive vehicles>	36-7	INSPECTION	36-13

GENERAL INFORMATION

M1361000100388

<L.H. drive vehicles>

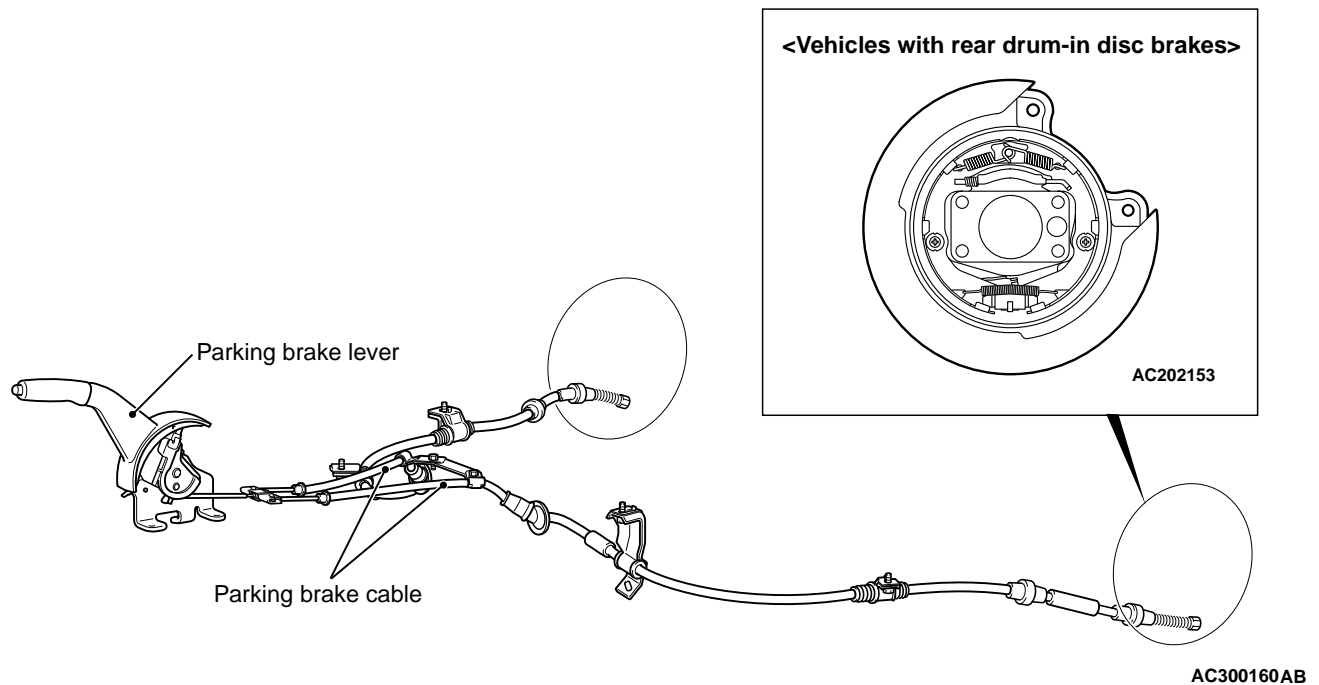
- The parking brake is of a mechanical rear-wheel acting type, and its operation utilises a parking brake lever.

<R.H. drive vehicles>

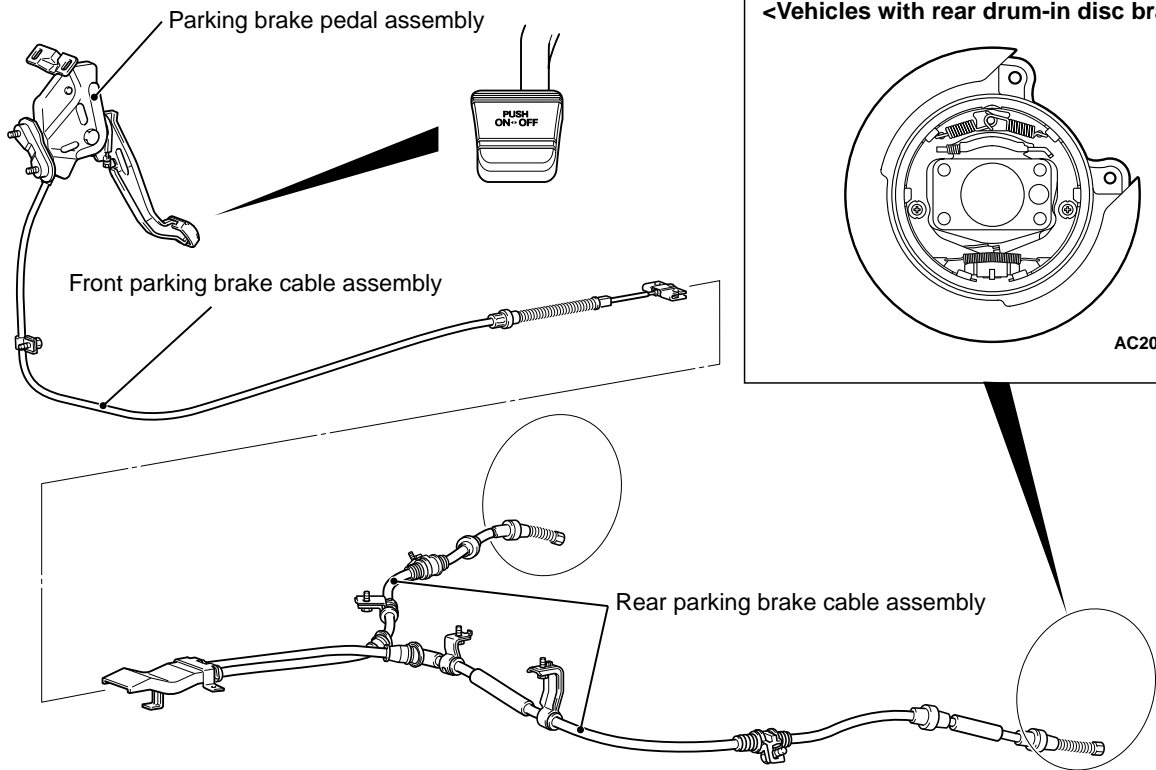
- The parking brake is of a mechanical rear-wheel acting type. The foot pedal is used to lock and release the parking brake for easier operation. The pedal surface is labeled with "PUSH", "ON", and "OFF," and users can easily understand the pedal release mechanism.

CONSTRUCTION DIAGRAM

<L.H. drive vehicles>



<R.H. drive vehicles>



SPECIFICATIONS

SERVICE SPECIFICATIONS

M1361000300467

Item	Standard value	Limit
Parking brake lever stroke <L.H. drive vehicles>	4 – 5 notches	—
Parking brake pedal stroke <R.H. drive vehicles>	1 – 2 notches	—
Rear brake lining thickness mm	2.8	1.0
Rear drum inside diameter mm	168.0	169.0

ON-VEHICLE SERVICE

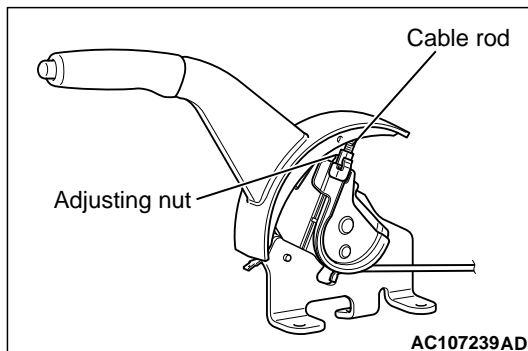
PARKING BRAKE LEVER STROKE
CHECK AND ADJUSTMENT <L.H. drive
vehicles>

M1361000900414

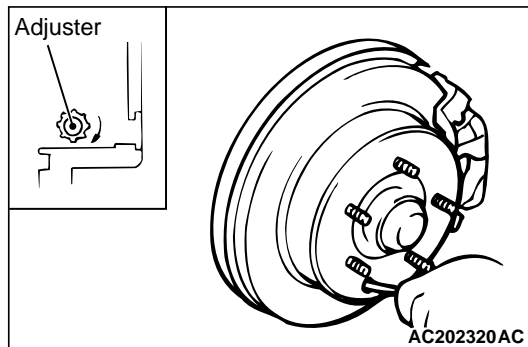
1. Pull the parking brake lever with a force of approximately 200 N and count the number of notches.

Standard value: 4 – 5 notches

2. If the parking brake lever stroke is not the standard value, adjust as described below.
 - (1) Remove the floor console assembly (Refer to GROUP 52A, Floor Console Assembly P.52A-14).



- (2) Loosen the adjusting nut to move it to the cable rod end so that the cable will be free.



- (3) Remove the rear brake adjusting hole plug. Then insert a flat-tipped screwdriver to turn the adjuster to the arrow direction (to expand the shoe) until the parking brake shoe makes contact and the disc can no longer be turned. Back off the adjuster to the opposite direction by five notches.

CAUTION

If the parking brake lever stroke is below the standard value and the braking is too firm, the rear brakes may drag.

- (4) Adjust the parking brake lever stroke to the standard value by turning the adjusting nut. After the adjustment, ensure that there is no free play between the adjusting nut and the parking brake lever.
- (5) After the parking brake lever stroke is adjusted, raise the rear of the vehicle. Release the parking brake, turn the rear wheels to confirm that the rear brakes are not dragging.

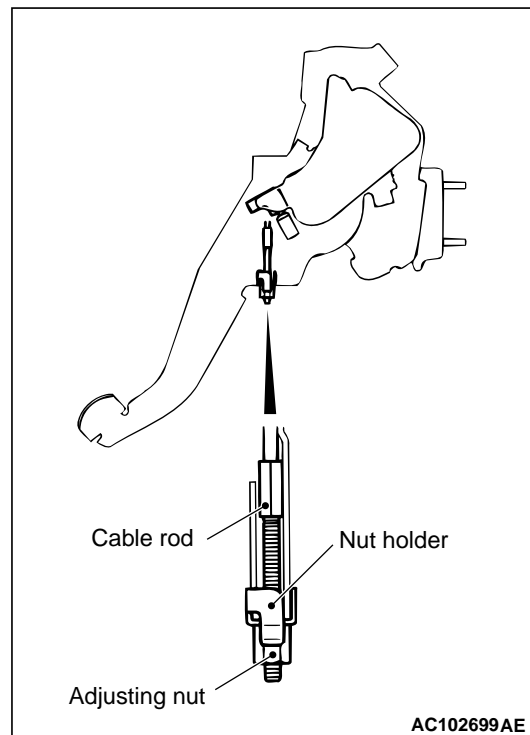
PARKING BRAKE PEDAL STROKE
CHECK AND ADJUSTMENT <R.H. drive
vehicles>

M1361001000102

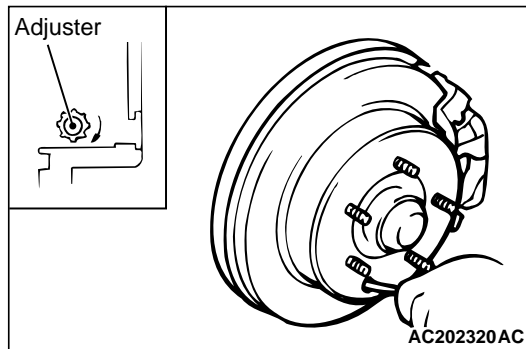
1. Depress the parking brake pedal by approximately 200 N.

Standard value: 1 – 2 notches

2. If the parking brake pedal stroke is not within the standard value, adjust as described below.



- (1) Loosen the adjusting nut to the end of the cable rod in order to allow slack in the cables.



- (2) Remove the rear brake adjusting hole plug. Then insert a flat-tipped screwdriver to turn the adjuster to the arrow direction (to expand the shoe) until the parking brake shoe makes contact and the disc can no longer be turned. Back off the adjuster to the opposite direction by five notches.

CAUTION

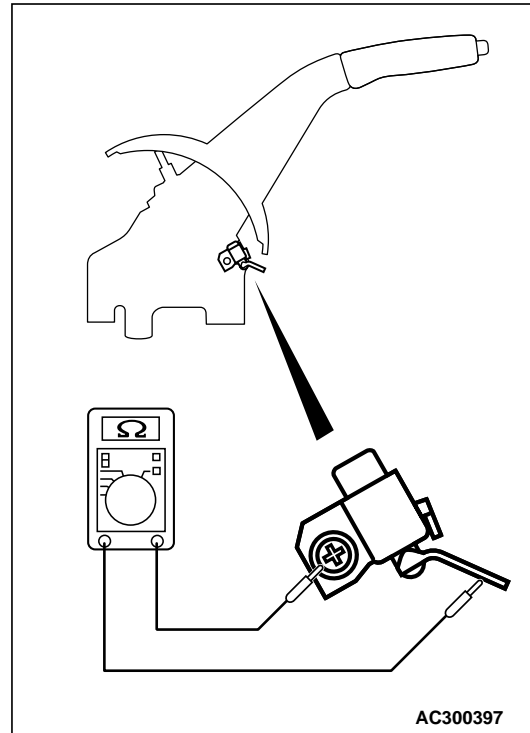
If the parking brake lever stroke is below the standard value and the braking is too firm, the rear brakes may drag.

- (3) Adjust the parking brake pedal stroke to the standard value by turning the adjusting nut. After the adjustment, ensure that there is no free play between the adjusting nut and the parking brake pedal. In addition, check that the adjusting nut is secured by the nut holder.
- (4) After the parking brake pedal stroke is adjusted, raise the rear of the vehicle. Release the parking brake, turn the rear wheels to confirm that the rear brakes are not dragging.

PARKING BRAKE SWITCH CHECK

M1361003300455

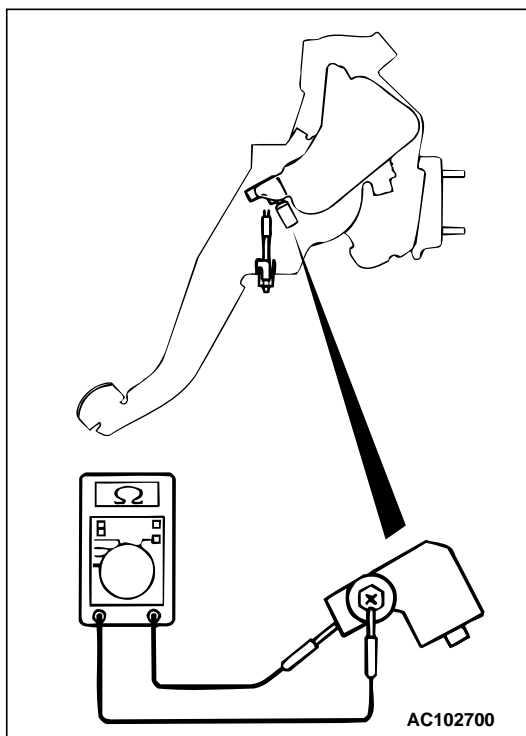
<L.H. drive vehicles>



1. Remove the floor console assembly. (Refer to GROUP 52A, Floor Console Assembly P.52A-14).
2. Check for continuity between the parking brake switch terminal and the switch mounting bolt.

When parking brake lever is pulled	Less than 2 ohms
When parking brake lever is released	Open circuit

<R.H. drive vehicles>



Check for continuity between the parking brake switch terminal and the switch mounting bolt.

When parking brake pedal is depressed	Less than 2 ohms
When parking brake pedal is released	Open circuit

LINING RUNNING-IN

M1361001100303

CAUTION

Carry out running-in in a place with good visibility, and pay careful attention to safety.

Carry out running-in by the following procedure when replacing the parking brake linings or the rear brake disc rotors, or when brake performance is insufficient.

<L.H. drive vehicles>

1. Adjust the parking brake lever stroke to the specified value.

Specified value (Operation force: Approx. 200 N): 4 – 5 notches

2. Hook a spring balance onto the centre of the parking brake lever grip and pull it with a force of 100 – 150 N in a direction perpendicular to the handle.
3. Drive the vehicle at a constant speed of 35 – 50 km/h for 100 metres.
4. Release the parking brake and let the brakes cool for 5 – 10 minutes.
5. Repeat the procedure in steps 2 to 4 four or five times.

<R.H. drive vehicles>

1. Adjust the parking brake pedal stroke to the standard value.

Specified value (Operation force: Approx. 200 N): 1 – 2 notches

2. Depress the parking brake pedal by 100 to 150 N (equivalent to approximately one notch).
3. Drive the vehicle at a constant speed of 35 – 50 km/h for 100 metres.
4. Release the parking brake and let the brakes cool for 5 – 10 minutes.
5. Repeat the procedure in steps 2 to 4 four or five times.

PARKING BRAKE LEVER <L.H. drive vehicles>

REMOVAL AND INSTALLATION

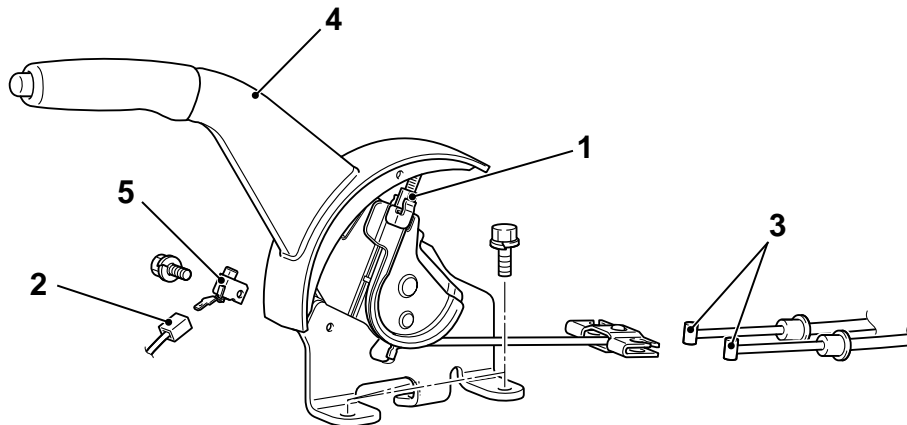
M1361001300396

Pre-removal Operation

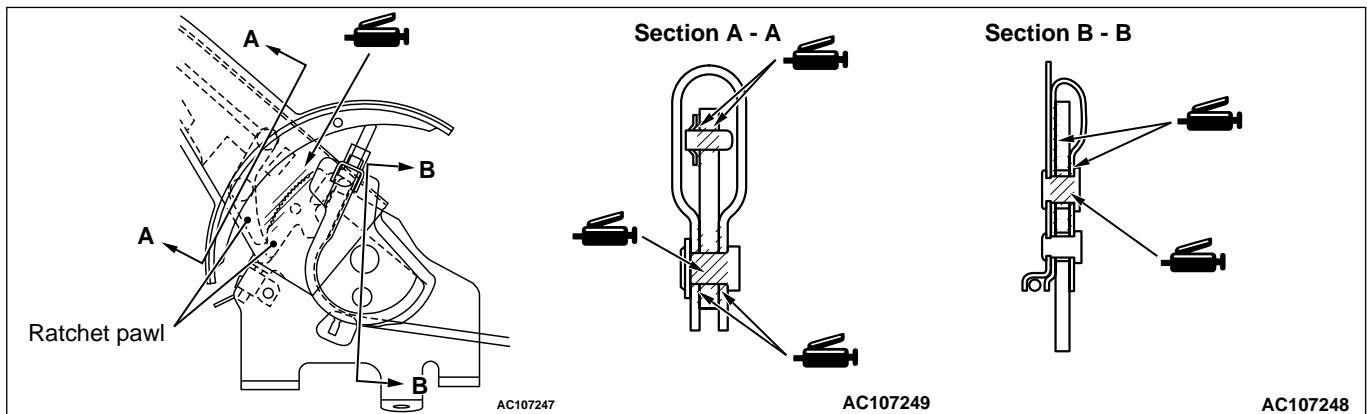
Rear Floor Console Assembly Removal (Refer to GROUP 52A, Floor Console [P.52A-14](#)).

Post-installation Operation

- Parking Brake Lever Stroke Adjustment (Refer to [P.36-4](#)).
- Rear Floor Console Assembly Installation (Refer to GROUP 52A, Floor Console Assembly [P.52A-14](#)).



AC107292
AC107457AC



Removal steps

1. Adjusting nut
2. Parking brake switch connector
3. Parking brake cable connection
4. Parking brake lever assembly
5. Parking brake switch

PARKING BRAKE PEDAL <R.H. drive vehicles>

REMOVAL AND INSTALLATION

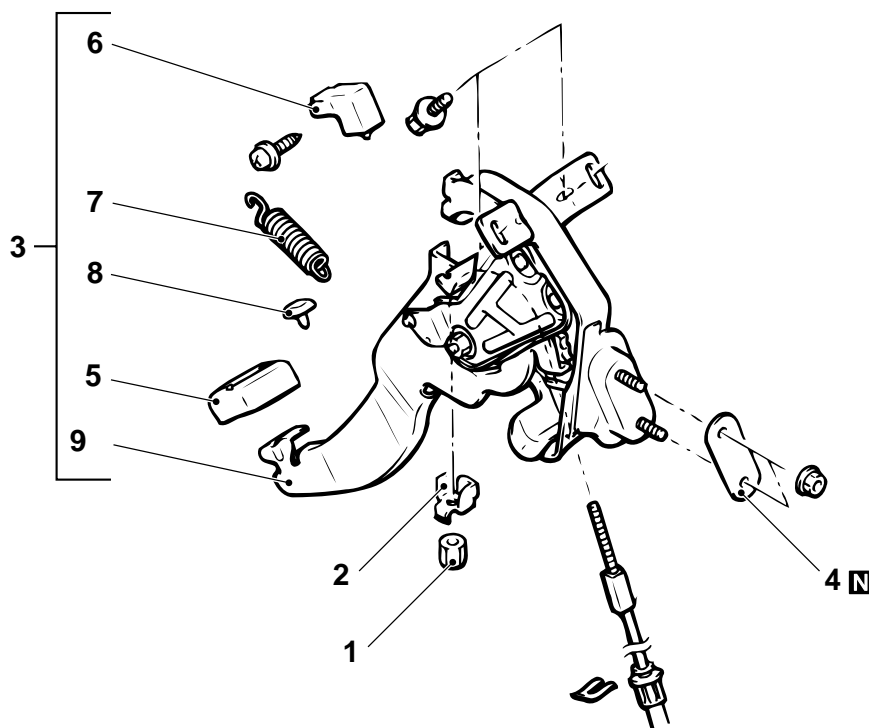
M1361001600137

Pre-removal Operation

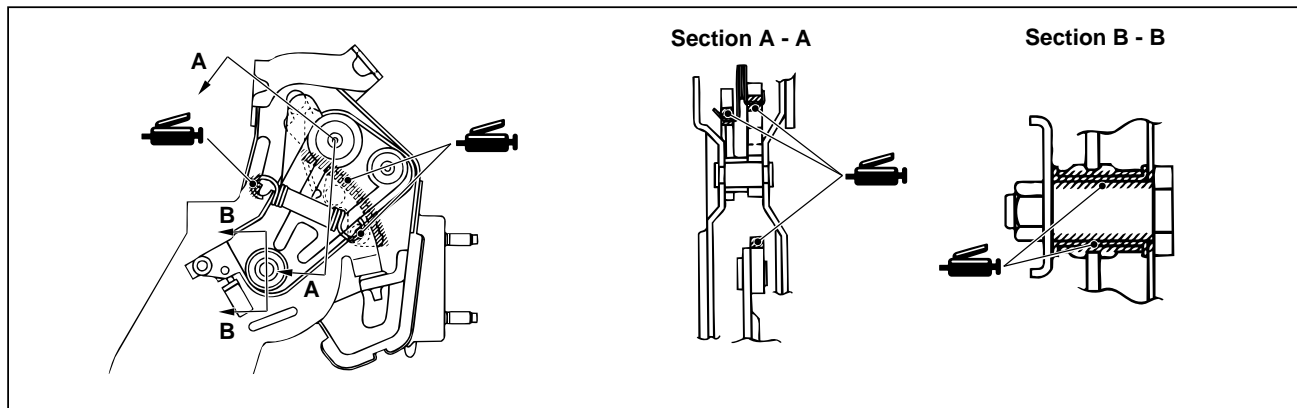
- Console side cover <driver's side> removal (Refer to GROUP 52A, Instrument Panel [P.52A-8](#)).
- Foot duct <driver's side> removal (Refer to GROUP 55A, Heater unit, Heater Core, Heater Blower Assembly and Evaporator Unit [P.55A-63](#)).

Post-installation Operation

- Foot duct <driver's side> installation (Refer to GROUP 55A, Heater unit, Heater Core, Heater Blower Assembly and Evaporator Unit [P.55A-63](#)).
- Console side cover <driver's side> installation (Refer to GROUP 52A, Instrument Panel [P.52A-8](#)).
- Parking Brake Pedal Stroke Adjustment (Refer to [P.36-4](#)).



AC103685 AC

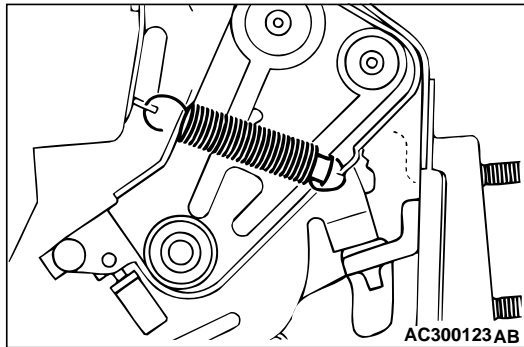


Removal steps

1. Adjusting nut
 2. Nut holder
 3. Parking brake pedal assembly
 4. Sealer
 5. Pedal pad
 6. Parking brake switch
 7. Tension spring
 8. Stopper
 9. Parking brake pedal assembly
- >>A<<

INSTALLATION SERVICE POINT

>>A<< TENSION SPRING INSTALLATION



Apply grease to the mating surface of the tension spring and pedal, and then install the spring as shown.

PARKING BRAKE CABLE

REMOVAL AND INSTALLATION <L.H. drive vehicles>

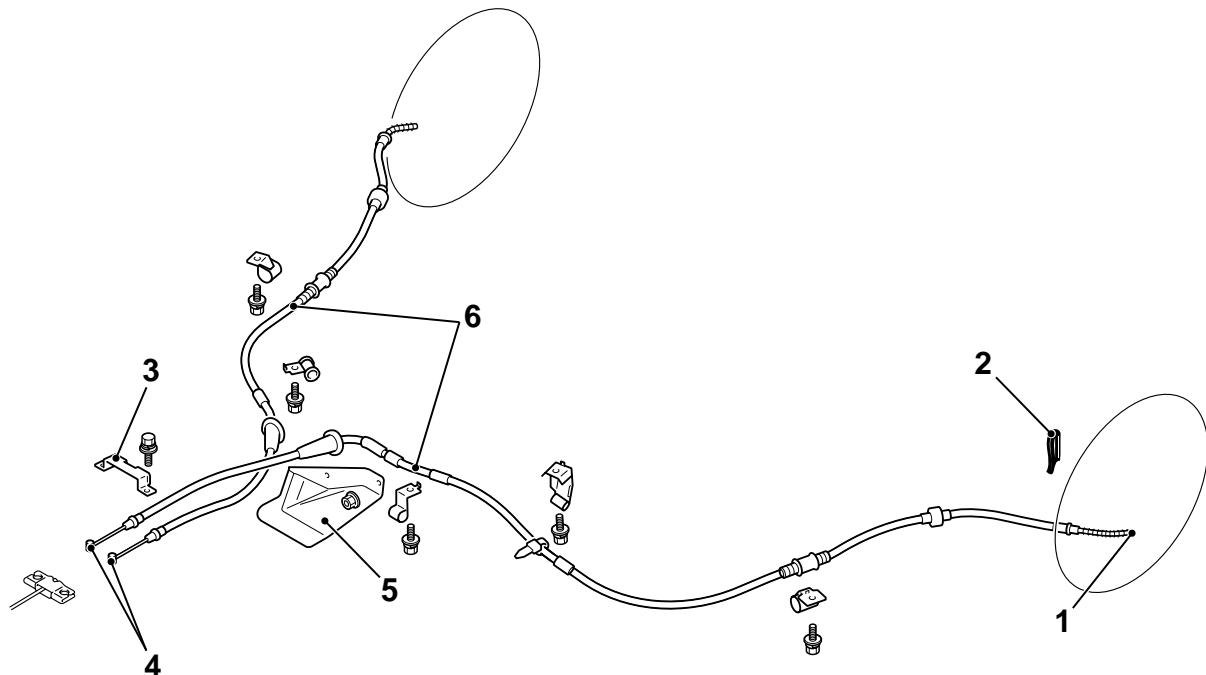
M1361001900581

Pre-removal Operation

- Rear Floor Console Assembly Removal (Refer to GROUP 52A, Floor Console [P.52A-14](#)).

Post-installation Operation

- Parking Brake Lever Stroke adjustment (Refer to [P.36-4](#)).
- Rear Floor Console Assembly Installation (Refer to GROUP 52A, Floor Console Assembly [P.52A-14](#)).



AC202586AD

Removal steps

- Shoe and lining assembly (Refer to [P.36-12](#)).
 - Loosen the adjusting nuts.
 - Turn up the driver's side carpet.
1. Parking brake cable connection

Removal steps (Continued)

2. Clip
3. Protector B
4. Parking brake cable connection
5. Protector C
6. Rear parking brake cable assembly

REMOVAL AND INSTALLATION

<R.H. drive vehicles>

M1361001900592

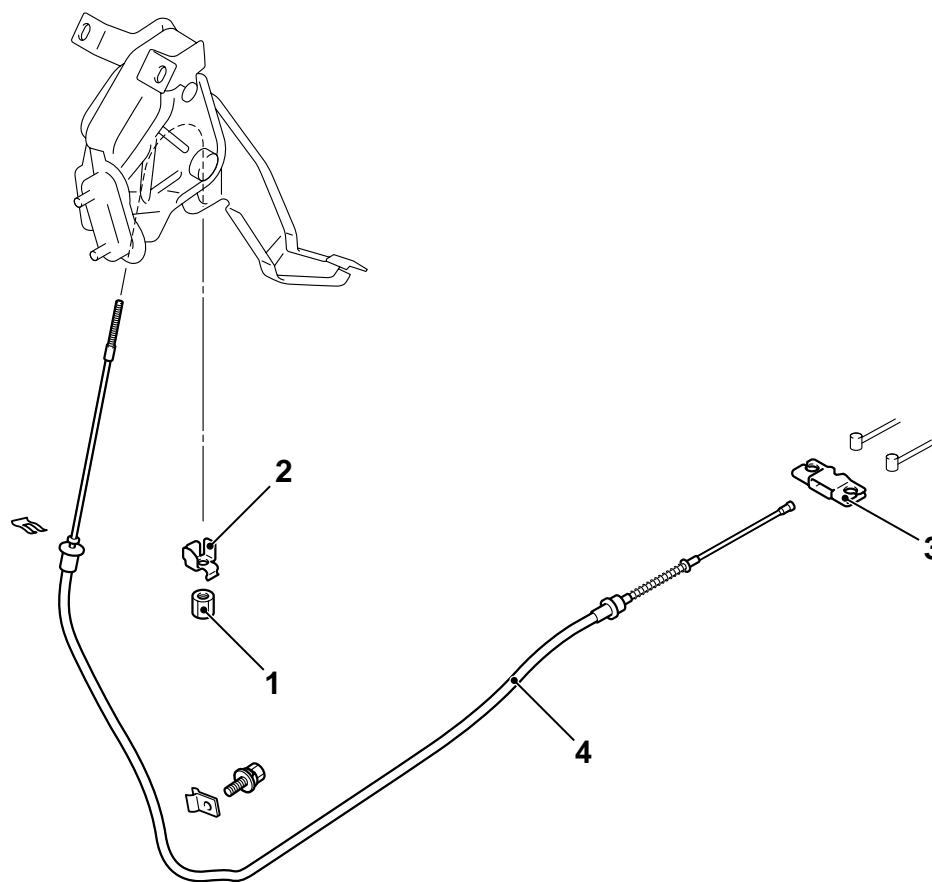
<Front>

Pre-removal Operation

- Front scuff plate, rear scuff plate, cowl side trim, lower center pillar trim removal (Refer to GROUP 52A, Trims [P.52A-18](#)).
- Front seat assembly removal <driver's side> (Refer to GROUP 52A, Front Seat Assembly [P.52A-29](#)).
- Rear seat cushion removal (Refer to GROUP 52A, Rear Seat [P.52A-36](#)).
- Seat belt lower anchor bolt removal (Refer to GROUP 52A, Seat Belt [P.52A-39](#)).
- Floor Console Assembly Removal (Refer to GROUP 52A, Floor Console [P.52A-14](#)).
- Center console panel and center console removal (Refer to GROUP 52A, Instrument Panel Assembly [P.52A-8](#)).
- Foot duct <driver's side> removal (Refer to GROUP 55A, Heater Unit, Heater Core, Blower Assembly and Evaporator Unit [P.55A-63](#)).
- Accelerator pedal stopper removal (Refer to GROUP 17, Accelerator Cable and Pedal [P.17-6](#) <2000>, [P.17-7](#) <2400>).

Post-installation Operation

- Accelerator pedal stopper installation (Refer to GROUP 17, Accelerator Cable and Pedal [P.17-6](#) <2000>, [P.17-7](#) <2400>).
- Foot duct <driver's side> installation (Refer to GROUP 55A, Heater Unit, Heater Core, Blower Assembly and Evaporator Unit [P.55A-63](#)).
- Center console panel and center console installation (Refer to GROUP 52A, Instrument Panel Assembly [P.52A-8](#)).
- Floor Console Assembly Installation (Refer to GROUP 52A, Floor Console [P.52A-14](#)).
- Seat belt lower anchor bolt removal (Refer to GROUP 52A, Seat Belt [P.52A-39](#)).
- Rear seat cushion removal (Refer to GROUP 52A, Rear Seat [P.52A-36](#)).
- Front seat assembly removal <driver's side> (Refer to GROUP 52A, Front Seat Assembly [P.52A-29](#)).
- Front scuff plate, rear scuff plate, cowl side trim, lower center pillar trim removal (Refer to GROUP 52A, Trims [P.52A-18](#)).
- Parking Brake pedal Stroke adjustment (Refer to [P.36-4](#)).



AC102716AD

Removal steps

- Turn up the driver's side carpet.
1. Adjusting nut

Removal steps (Continued)

2. Nut holder
3. Equalizer
4. Front parking brake cable assembly

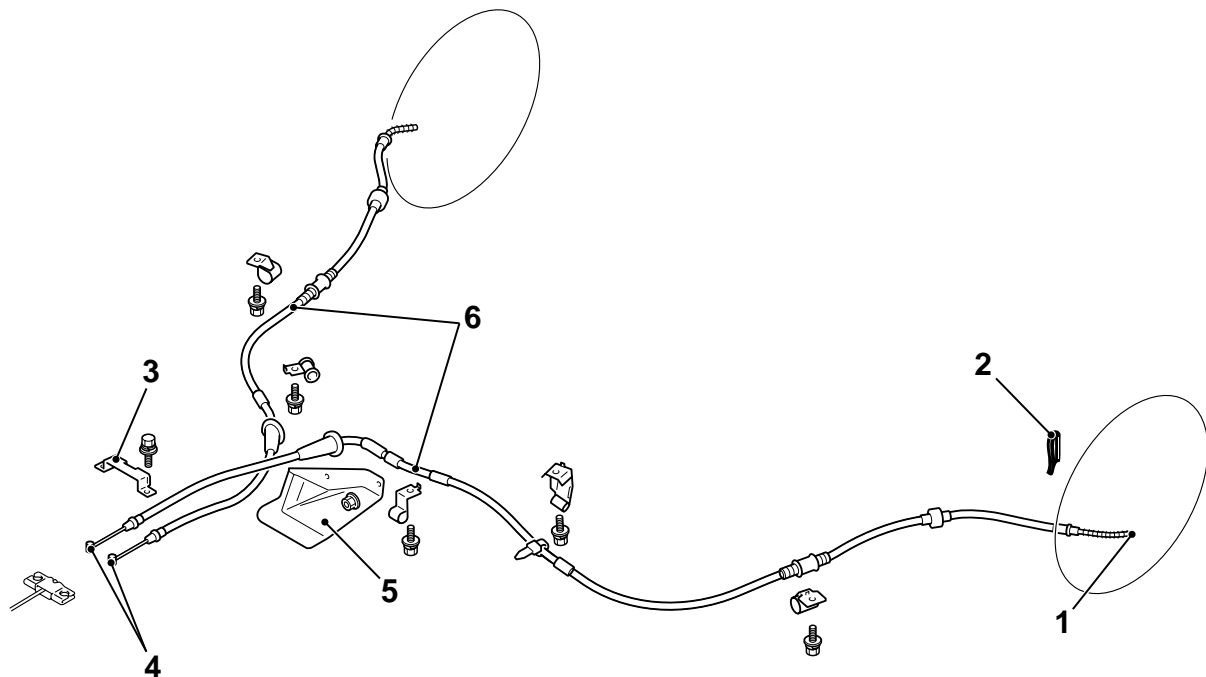
<Rear>

Pre-removal Operation

- Front scuff plate, rear scuff plate, cowl side trim, lower center pillar trim removal (Refer to GROUP 52A, Trims [P.52A-18](#)).
- Front seat assembly removal <driver's side> (Refer to GROUP 52A, Front Seat Assembly [P.52A-29](#)).
- Rear seat cushion removal (Refer to GROUP 52A, Rear Seat Assembly [P.52A-36](#)).
- Seat belt lower anchor bolt removal (Refer to GROUP 52A, Seat Belt [P.52A-39](#)).
- Floor Console Assembly Removal (Refer to GROUP 52A, Floor Console Assembly [P.52A-14](#)).
- Center console panel and center console removal (Refer to GROUP 52A, Instrument Panel Assembly [P.52A-8](#)).

Post-installation Operation

- Center console panel and center console installation (Refer to GROUP 52A, Instrument Panel Assembly [P.52A-8](#)).
- Floor Console Assembly Installation (Refer to GROUP 52A, Floor Console Assembly [P.52A-14](#)).
- Seat belt lower anchor bolt removal (Refer to GROUP 52A, Seat Belt [P.52A-39](#)).
- Rear seat cushion removal (Refer to GROUP 52A, Rear Seat Assembly [P.52A-36](#)).
- Front seat assembly removal <driver's side> (Refer to GROUP 52A, Front Seat Assembly [P.52A-29](#)).
- Front scuff plate, rear scuff plate, cowl side trim, lower center pillar trim removal (Refer to GROUP 52A, Trims [P.52A-18](#)).
- Parking Brake pedal Stroke adjustment (Refer to [P.36-4](#)).



AC202586AD

Removal steps

- Shoe and lining assembly (Refer to [P.36-12](#)).
 - Loosen the adjusting nuts.
 - Turn up the driver's side carpet.
1. Parking brake cable connection

Removal steps (Continued)

2. Clip
3. Protector B
4. Parking brake cable connection
5. Protector C
6. Rear parking brake cable assembly

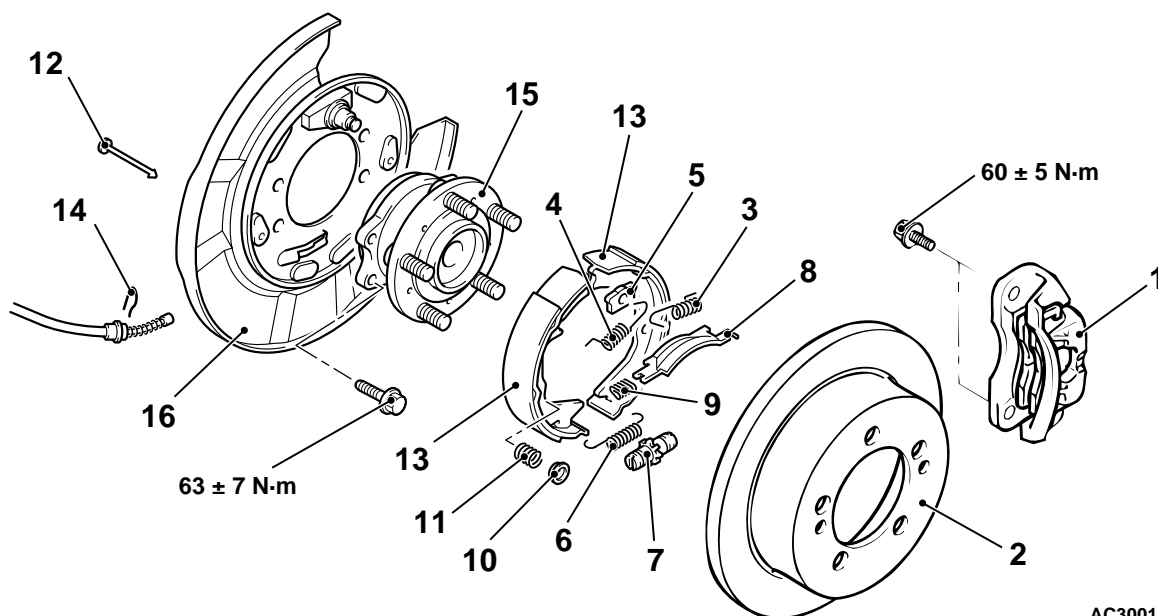
PARKING BRAKE LINING AND DRUM

REMOVAL AND INSTALLATION

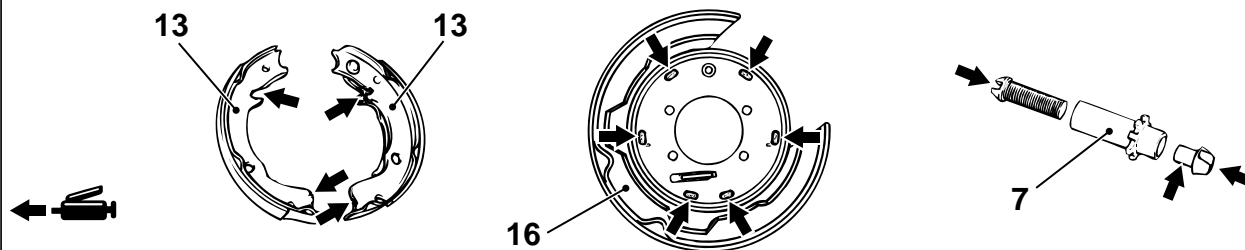
M1361002500359

Post-installation Operation

- Parking Brake Lever Stroke Check and Adjustment (Refer to [P.36-4](#)).
- Lining Running-in (Refer to [P.36-6](#)).
- Floor Console Installation (Refer to GROUP 52A, Floor Console Assembly [P.52A-14](#)).



AC300145AB



Brake grease: Multipurpose grease

Removal steps

- <<A>>
1. Rear brake caliper assembly
 2. Rear brake disc
- >>B<<
3. Shoe-to-anchor spring
 4. Shoe-to-anchor spring
- >>B<<
5. Shoe guide plate
 6. Adjusting wheel spring
- >>A<<
7. Adjuster assembly
 8. Strut
 9. Strut-to-shoe spring
 10. Shoe hold-down cup

Removal steps (Continued)

11. Shoe hold-down spring
12. Shoe hold-down pin
13. Shoe and lining assembly
14. Clip
15. Rear hub assembly (For 2WD, refer to GROUP 27A, Rear Hub Assembly [P.27A-5](#). For 4WD, refer to GROUP 27B, Rear Hub Assembly [P.27B-8](#)).
16. Backing plate

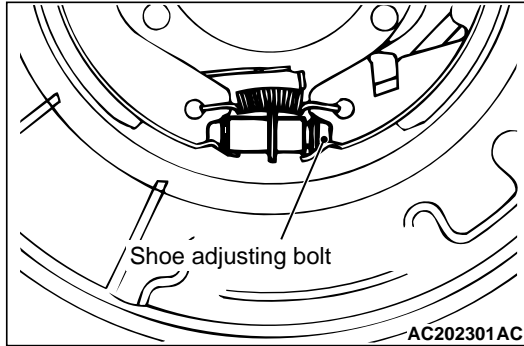
REMOVAL SERVICE POINT

<<A>> REAR BRAKE CALIPER ASSEMBLY REMOVAL

Remove the rear brake caliper assembly and support it with wire or something similar.

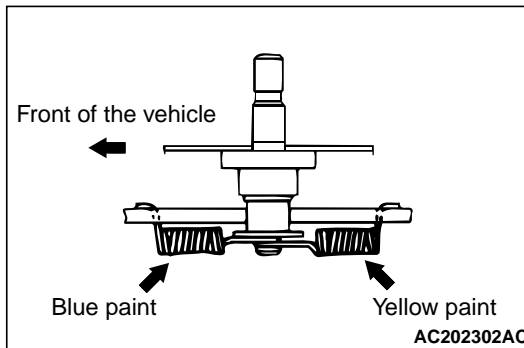
INSTALLATION SERVICE POINTS

>>A<< ADJUSTER ASSEMBLY INSTALLATION



Install the adjuster so that the shoe adjusting bolt for the left hand wheel is attached towards the rear of the vehicle, and the shoe adjusting bolt for the right hand wheel is towards the front of the vehicle.

>>B<< SHOE-TO-ANCHOR SPRING INSTALLATION



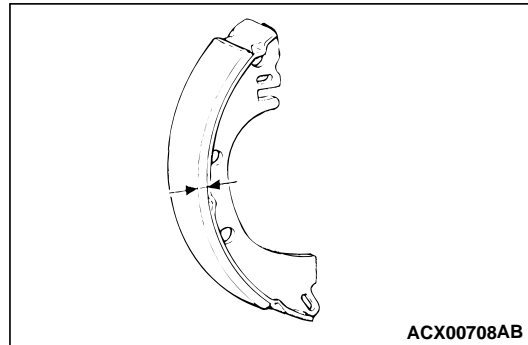
The shoe-to-anchor springs are not interchangeable as their constants are different. The one with blue paint mark should be install at the front of the vehicle, and the other with yellow paint at the rear of the vehicle, respectively.

NOTE: The illustration shows the left rear wheel. The right rear wheel is symmetrical to that.

INSPECTION

M1361002600301

PARKING BRAKE LINING AND BRAKE DRUM CHECK

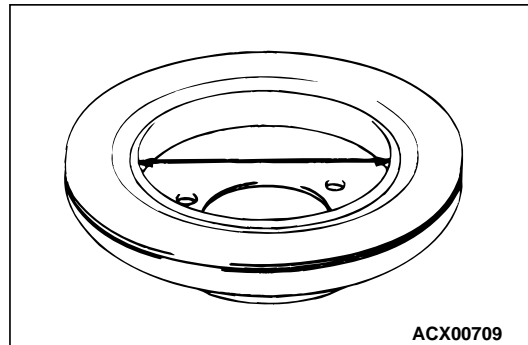


1. Measure the thickness of the brake lining at several places.

Standard value: 2.8 mm

Limit: 1.0 mm

2. If the thickness of the brake lining is below the limit, replace the shoe and lining assemblies on both sides of the vehicle. Never replace only one side.



3. Measure the inside diameter of the brake disc in two places or more.

Standard value: 168.0 mm

Limit: 169.0 mm

4. If the inside diameter exceeds the limit, or if it is excessively worn on one side, replace the brake disc.

NOTES