




# SERVICE BULLETIN

QUALITY INFORMATION ANALYSIS  
OVERSEAS SERVICE DEPT. MITSUBISHI MOTORS CORPORATION

|  |   |   |   |
|--|---|---|---|
| <b>SERVICE BULLETIN</b>  |   | No.: MSB-99E55-503  |   |
|  |   | Date: 1999-12-15  | <Model> (EC,EXP) L200<br>(K00)<br><M/Y> 97-10 |
| Subject: OMISSION OF DISASSEMBLY / REASSEMBLY OF A/C COMPRESSOR ASSEMBLY |   |   |   |
| Group: HEATER, A/C & VENTILATION   | Draft No.: 99SY060115                   |   |   |
| CORRECTION   | INTERNATIONAL CAR ADMINISTRATION OFFICE | <br>T.NITTA - PROJECT LEADER<br>AFTER SALES SERVICE & CS PROMOTION |   |

## 1. Description:

Omission has been rectified of a description of the disassembly / reassembly of the A/C compressor assembly under Compressor and Tension Pulley.

## 2. Applicable Manuals:

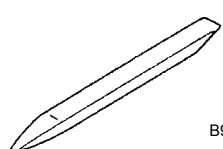
| Manual                           | Pub. No. | Language  | Page(s)  |
|----------------------------------|----------|-----------|----------|
| '97 L200 Workshop Manual Chassis | PWTE96E1 | (English) | 55-5, 32 |
|                                  | PWTS96E1 | (Spanish) |          |
|                                  | PWTF96E1 | (French)  |          |
|                                  | PWTG96E1 | (German)  |          |

## 3. Details:

'97 L200 Workshop Manual Chassis, page 2,3,4,5

# SPECIAL TOOL

55100060017

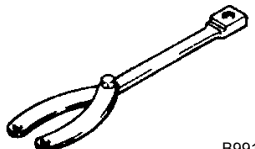
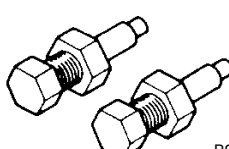
| Tool   | Number   | Name             | Use                          |
|--|----------|------------------|------------------------------|
| <br>B990784 | MB990784 | Ornament remover | Meter bezel assembly removal |

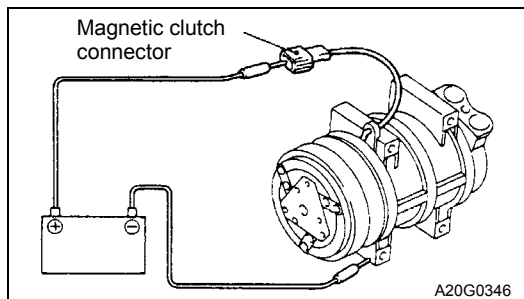
# TROUBLESHOOTING

55200070150

| Trouble symptom  | Problem cause  | Remedy   | Reference page |
|--|--|--|----------------|
| When the ignition switch is "ON" the A/C does not operate.   | A/C compressor relay is defective  | Replace A/C compressor relay   | 55-16          |
|  | Magnetic clutch is defective   | Replace the A/C compressor   | 55-6, 30       |
|  | Refrigerant leak or overfilling of refrigerant   | Replenish the refrigerant, repair the leak or take out some of the refrigerant | 55-6, 14       |
|  | Dual pressure switch is defective  | Replace the dual pressure switch   | 55-7, 35       |
|  | A/C switch is defective  | Replace the A/C switch   | 55-21, 23      |
|  | Blower switch is defective   | Replace the blower switch  | 55-21, 23      |
|  | Thermostat is defective  | Replace the Thermostat   | 55-29          |
|  | Engine coolant temperature switch (for A/C cut-off) is defective <Diesel-powered vehicles> | Replace the engine coolant temperature switch                                  | 55-37, 38      |
| When the A/C is operating, temperature inside the passenger compartment doesn't decrease (cool air is not emitted) | Engine-ECU is defective <Petrol-powered vehicles>  | Replace the engine-ECU   | —              |
|  | Refrigerant leak   | Replenish the refrigerant and repair the leak                                  | 55-14          |
|  | Dual pressure switch is defective  | Replace the dual pressure switch   | 55-7, 35       |
|  | Thermostat is defective  | Replace the Thermostat   | 55-29          |

# <Added>

|  |          |                 |  |
|--|----------|-----------------|--|
| <br>B991367 | MB991367 | Special spanner | Removal and installation of armature mounting nut of compressor. |
| <br>B991386 | MB991386 | Pin             |  |

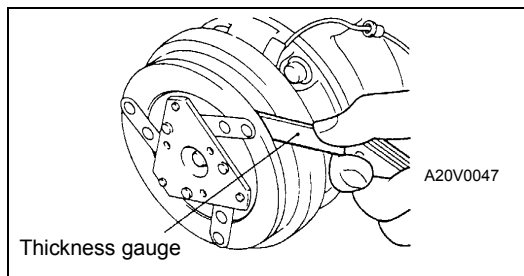


## INSPECTION

### COMPRESSOR MAGNETIC CLUTCH OPERATION CHECK

55200850105

Connect the battery (+) terminal to the compressor side terminal, and earth the battery (-) terminal to the body of the compressor. The condition is normal if the sound of the magnetic clutch (click) can be heard.



### COMPRESSOR MAGNETIC CLUTCH AIR GAP CHECK

55201110011

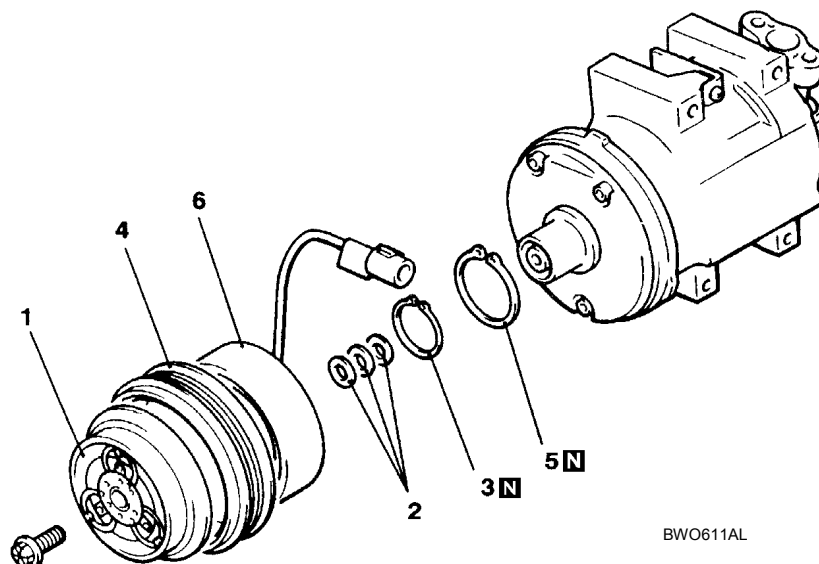
Check whether or not the air gap of the clutch is within the standard value.

**Standard value: 0.3 – 0.6 mm**

**See the Following two pages.**

## MAGNETIC CLUTCH

### DISASSEMBLY AND REASSEMBLY



#### Magnetic clutch disassembly steps

▶B◀  
◀A▶

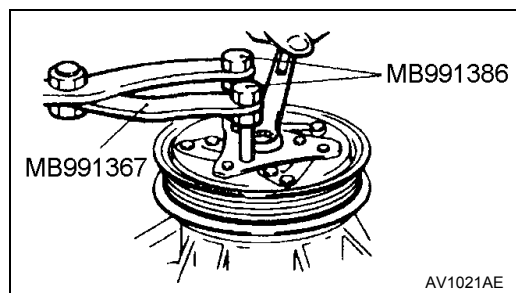
- Air gap adjustment
- 1. Armature plate
- 2. Shims

- ▶A◀
- 3. Snap ring
  - 4. Rotor
  - 5. Snap ring
  - 6. Clutch coil

BWO611AL

#### DISASSEMBLY SERVICE POINTS

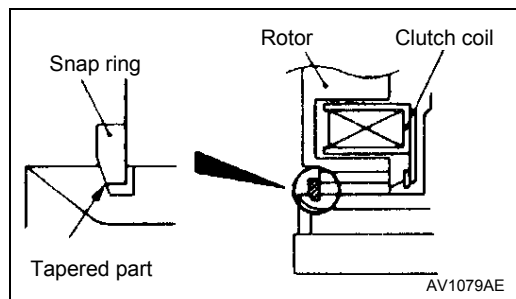
##### ◀A▶ ARMATURE PLATE REMOVAL



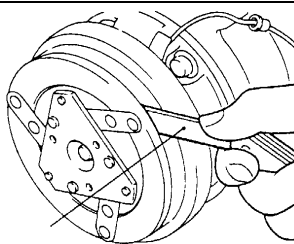
#### REASSEMBLY SERVICE POINTS

##### ▶A◀ SNAP RING INSTALLATION

Install the snap ring so that the tapered surface is at the outer side.



<Added>



### ►B◄ AIR GAP ADJUSTMENT

Check whether or not the air gap of the clutch is within the standard value.

**Standard value: 0.3 – 0.6 mm**

**Note**

If there is a deviation of the air gap from the standard value, make the necessary adjustment by adjusting the number of shims.

**<Added>**