

GROUP 21A

CLUTCH

CONTENTS

GENERAL INFORMATION	21A-2	CLUTCH SWITCH CHECK AND ADJUSTMENT	21A-4
SERVICE SPECIFICATIONS.....	21A-2	CLUTCH PEDAL.....	21A-5
LUBRICANTS	21A-2	REMOVAL AND INSTALLATION	21A-5
ON-VEHICLE SERVICE.....	21A-2	CLUTCH CONTROL.....	21A-7
CLUTCH PEDAL CHECK AND ADJUSTMENT	21A-2	REMOVAL AND INSTALLATION	21A-7
CLUTCH BLEEDING	21A-3	INSPECTION.....	21A-9
		DISASSEMBLY AND REASSEMBLY	21A-10
		INSPECTION.....	21A-11

GENERAL INFORMATION

M1211000100212

The clutch is a dry single-disc, diaphragm type; hydraulic pressure is used for the clutch control. The clutch shares a brake fluid reservoir with the brake system.

SERVICE SPECIFICATIONS

M1211000300205

Item		Standard value
Clutch pedal height mm	LH drive vehicles	226 – 229
Clutch pedal height mm	RH drive vehicles	254 – 257
Clutch pedal clevis pin play mm		1 – 3
Clutch pedal free play mm		4 – 13
Distance between the clutch pedal and the clutch pedal stopper when the clutch is disengaged mm	LH drive vehicles	30 or more
Distance between the clutch pedal and the clutch pedal bracket when the clutch is disengaged mm	RH drive vehicles	30 or more

LUBRICANTS

M1211000400183

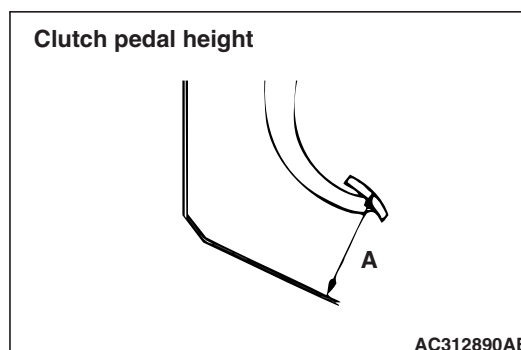
Item	Specified lubricant	Quantity
Clutch fluid	Brake Fluid DOT 3 or DOT 4	As required
Pushrod assembly	Rubber grease	As required
Boot	Rubber grease	As required
Release cylinder push rod	MITSUBISHI genuine grease Part No.0101011	As required

ON-VEHICLE SERVICE

CLUTCH PEDAL CHECK AND ADJUSTMENT

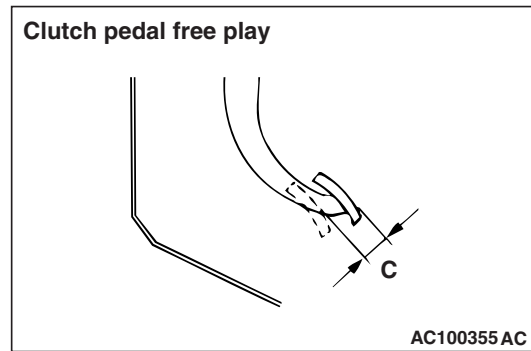
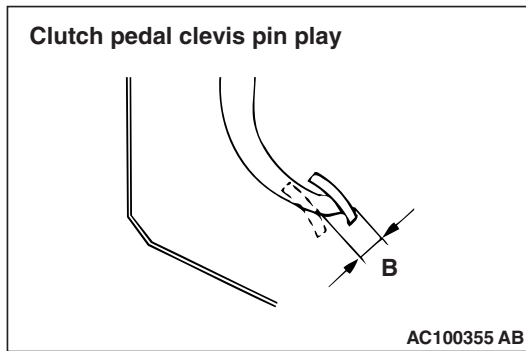
M1211000900274

1. Turn up the carpet, etc. under the clutch pedal.

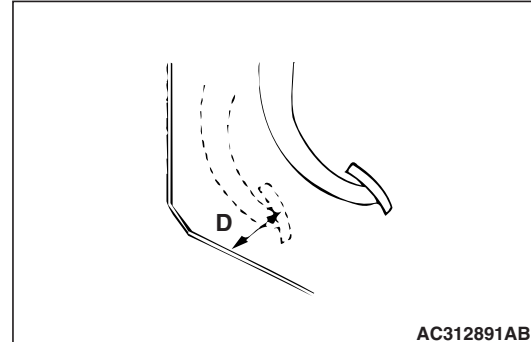
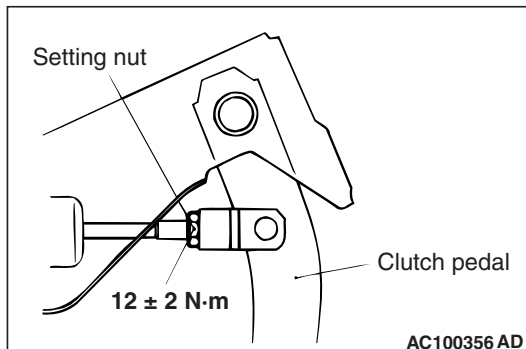


2. Measure the clutch pedal height.

Standard value (A): 226 – 229 mm <LH drive vehicles>, 254 – 257 mm <RH drive vehicles>



3. Measure the clutch pedal clevis pin play.
Standard value (B): 1 – 3 mm



CAUTION

Do not push in the master cylinder pushrod at this time, otherwise the clutch will not operate properly.

4. If the clutch pedal height and clutch pedal clevis pin play are not within the standard value, loosen the setting nut to adjust the clutch pedal height and clevis pin play to the standard value.

5. After completing the adjustments, confirm that the clutch pedal free play (measured at the face of the pedal pad) and the distance between the clutch pedal (the face of the pedal pad) and the clutch pedal stopper when the clutch is disengaged are within the standard value ranges.

Standard value (C): 4 – 13 mm

Standard value (D): 30 mm or more

6. If the clutch pedal free play and the distance between the clutch pedal and the clutch pedal stopper or toeboard when the clutch is disengaged do not agree with the standard values, it is probably the result of either air in the hydraulic system or a faulty master cylinder, release cylinder or clutch. Bleed the air, or disassemble and inspect the master cylinder, release cylinder or clutch.

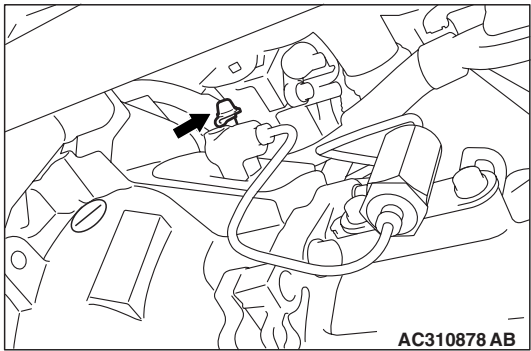
CLUTCH BLEEDING

M1211001400205

CAUTION

Use the specified brake fluid. Do not mix brake fluids.

Specified fluid: Brake fluid DOT 3 or DOT 4

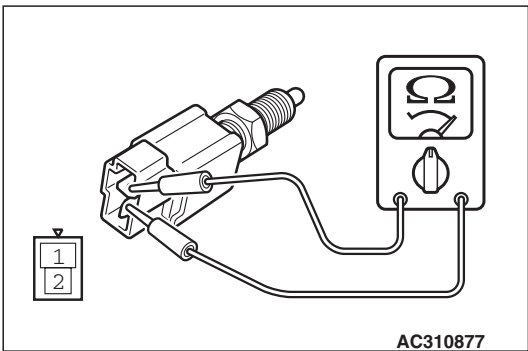


1. Connect a hose with a bottle to the bleeder screw.
2. Open the bleed nipple.
3. Depress the clutch pedal slowly. Open the bleeder screw to let air and brake fluid out. Close the bleeder screw. Release the clutch pedal. Repeat until only brake fluid and no air comes out.
4. Check that the brake fluid reservoir level stays between "MAX" and "MIN" marks throughout the clutch bleeding process.

**CLUTCH SWITCH CHECK AND
ADJUSTMENT**

1. Adjust the clutch pedal.

M1211001100196



2. Connect an ohmmeter to the clutch switch connector, and then check for continuity when the clutch pedal is fully depressed and when it is released outward.

Tester connection	Pedal position	Specified condition
1-2	Fully depressed	Less than 2 Ω
	Released	Open circuit

3. If the continuity is incorrect, replace the clutch switch.

CLUTCH PEDAL

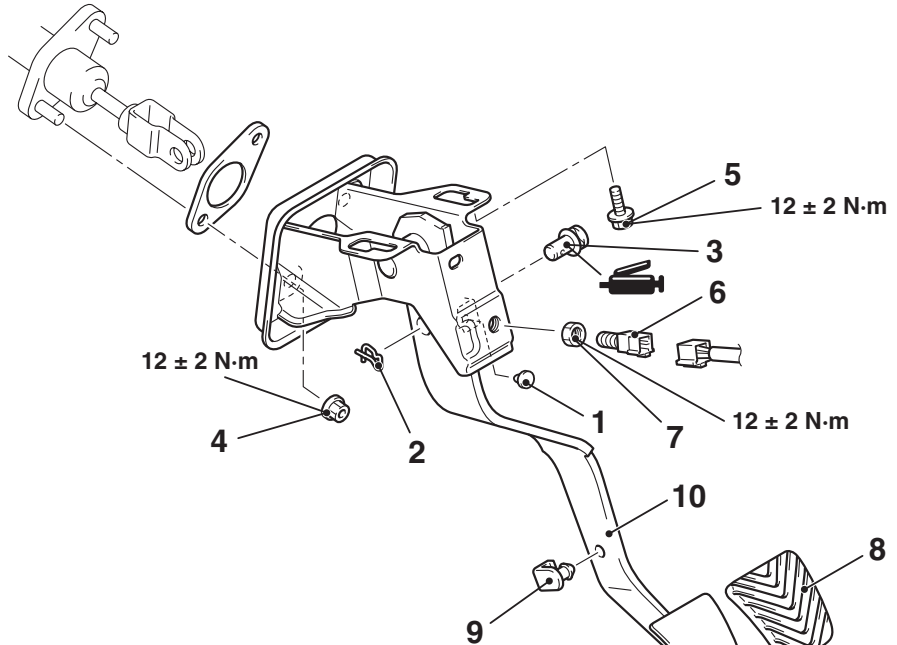
REMOVAL AND INSTALLATION

M1211001600221

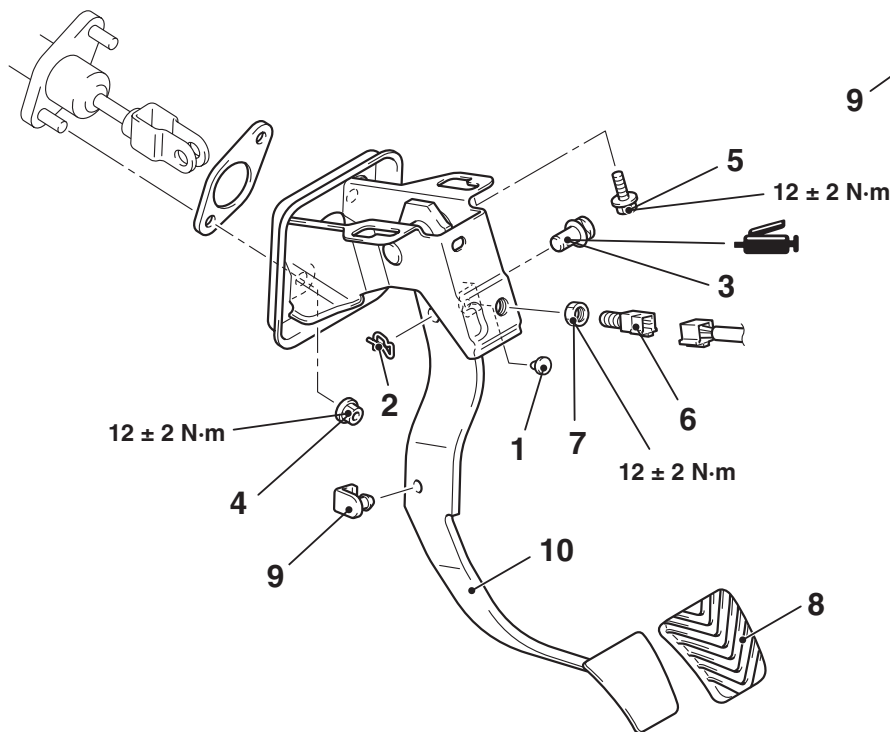
Post-installation Operation

- Clutch Pedal Adjustment (Refer to [P.21A-2](#)).

<LH drive vehicles>



<RH drive vehicles>



AC311081AB

Removal steps

- Instrument panel under cover (Refer to GROUP 52A, Instrument panel [P.52A-2](#)).
- 1. Stopper
- 2. Snap pin
- 3. Clevis pin
- 4. Clutch master cylinder mounting nut

Removal steps (Continued)

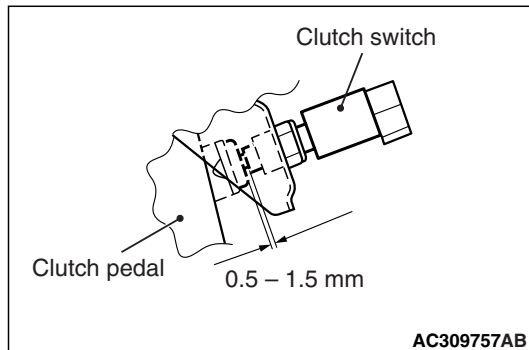
- 5. Clutch pedal assembly mounting bolt
- 6. Clutch switch
- 7. Nut
- 8. Pedal pad
- 9. Pedal stopper
- 10. Clutch pedal assembly

>>A<<

INSTALLATION SERVICE POINT

>>A<< CLUTCH SWITCH INSTALLATION

Install the clutch switch at the specified dimension when the clutch pedal is released.



**Clutch master cylinder removal
steps (Continued)**

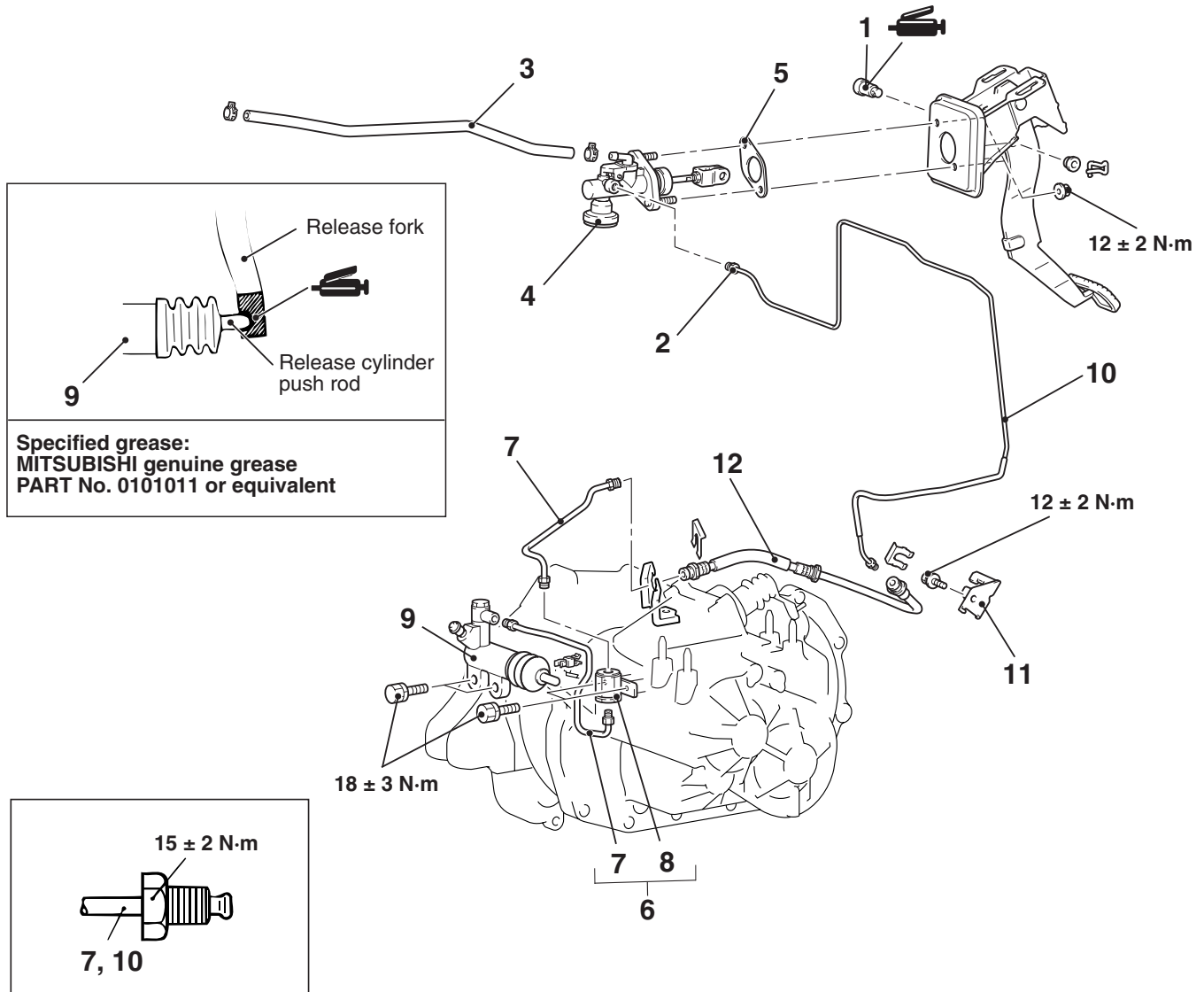
8. Eye bolt
9. Gasket

**Clutch release cylinder removal
steps**

10. Clutch tube and clutch orifice
assembly
11. Clutch tube
12. Clutch orifice assembly
13. Clutch release cylinder

Clutch line removal steps

- >>A<<
14. Clutch hose
 15. Clutch tube
 16. Clutch damper assembly
 17. Clutch tube
 18. Clutch hose bracket
 19. Clutch hose

<R.H. drive vehicles>

Clutch master cylinder removal steps

- >>B<<
1. Clevis pin
 2. Clutch tube connection
 3. Reservoir hose
 4. Clutch master cylinder
 5. Sealer

Clutch release cylinder removal steps

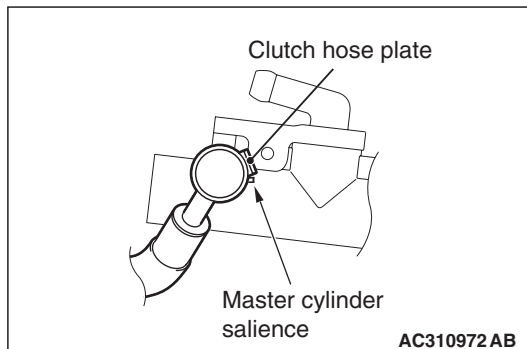
6. Clutch tube and clutch orifice assembly
7. Clutch tube
8. Clutch orifice assembly
9. Clutch release cylinder

Clutch line removal steps

10. Clutch tube
11. Clutch hose bracket
12. Clutch hose

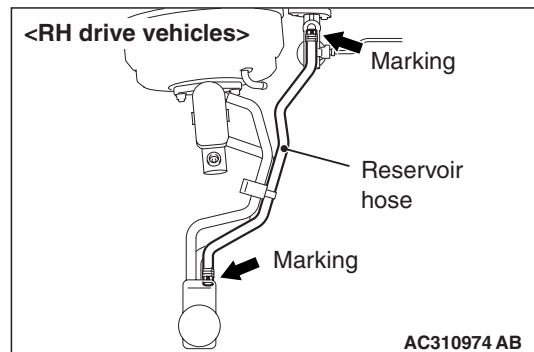
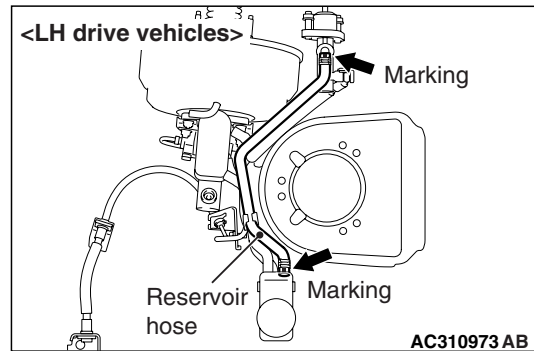
INSATALLATION SERVICE POINT

>>A<< CLUTCH HOSE INSTALLATION



Install the clutch hose so that the clutch hose plate will touch the master cylinder salience.

>>B<< RESERVOIR HOSE INSTALLATION



Install the reservoir hose with the marking as shown in the illustration.

INSPECTION

M1211002000158

- Check the master cylinder or clutch hose for fluid leakage.
- Check the clutch hose or tube for cracks or clogging.

DISASSEMBLY AND REASSEMBLY

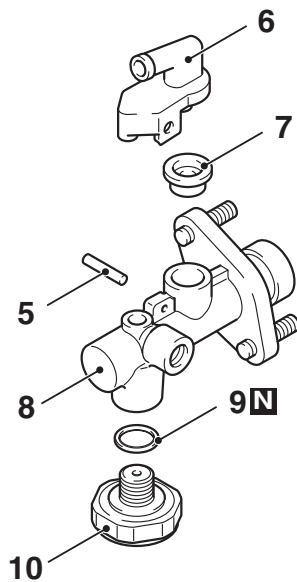
M1211002100229

CLUTCH MASTER CYLINDER

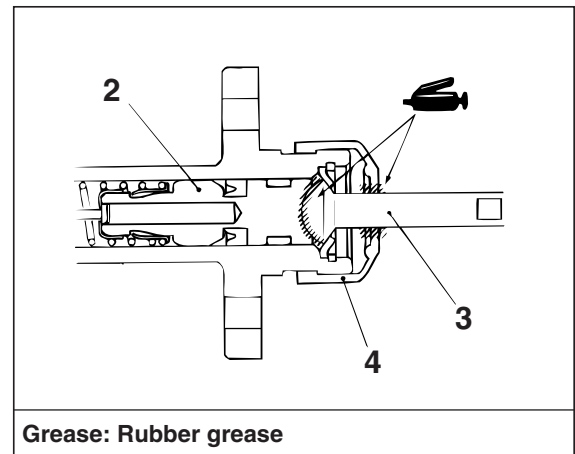
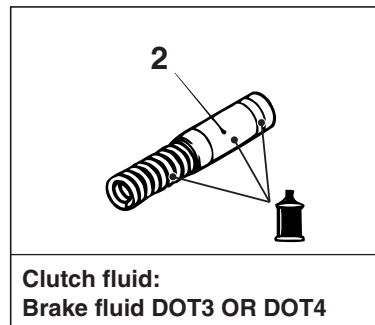
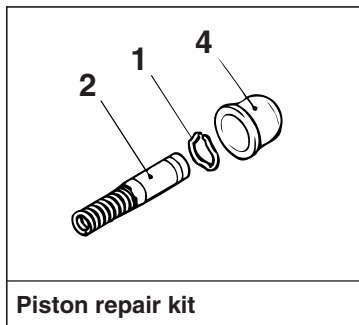
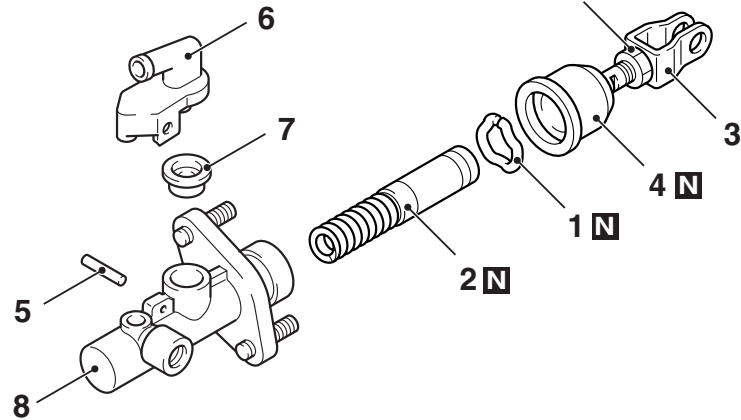
⚠ CAUTION

Do not disassemble the piston assembly.

<RH drive vehicles>



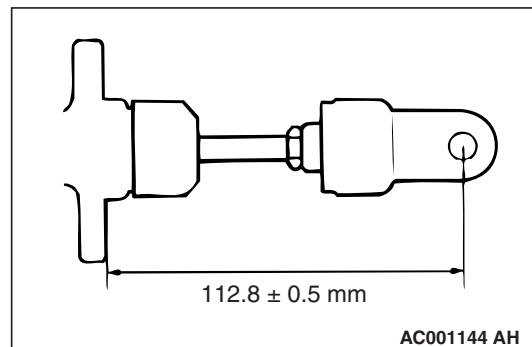
<LH drive vehicles>



AC310984AB

Disassembly steps

- >>A<<
1. Piston stopper ring
 2. Piston assembly
 3. Pushrod assembly
 4. Boot
 5. Spring pin
 6. Nipple
 7. Seal
 8. Master cylinder body
 9. Gasket
 10. Damper assembly

REASSEMBLY SERVICE POINT
>>A<< PUSHROD ASSEMBLY
INSTALLATION


Set the length of the pushrod assembly to the dimension shown to make the adjustment of the clutch pedal easier.

INSPECTION

M1211002200152

- Check inside the cylinder body for rust and scars.
- Check the piston for rust and scars.
- Check the pipe connection for clogging.